



Kyocera

2255

- > Clear and secure wireless calling on the Sprint PCS Nationwide Network
- > Wireless Internet capability enables access to Sprint PCS Wireless WebSM services
- > Compact, lightweight design with brilliant-blue backlight for easy screen and keypad readability

Cool-blue communication that fits your lifestyle

Kyocera 2200 Series

www.kyocera-wireless.com



Kyocera 2200 Series

Here it is: a convenient and simple communications solution—in one cool package. The Kyocera 2200 Series phone is compact, lightweight and ergonomic, with easy-to-use navigation keys and a brilliant-blue backlit display and keypad. It's straight-forward enough for a first-time user to master, yet feature rich enough for the most tech-savvy professional.

The Kyocera 2200 Series phone gives you the options and reliability you've come to expect from Kyocera—with a few perks. A Wireless Application Protocol (WAP) browser gives you access to up-to-the-minute information on the Web.* Productivity tools include voice memos and a contact directory. Plus, you get four electronic games for downtime diversion. Check out your favorite Web sites, send and receive e-mail and text messages.* This phone lets you do things your way.

The Kyocera 2200 Series: It lives up to your lifestyle.



Actual Size

FEATURES

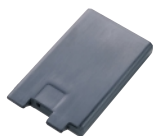
- > Five-line, full bitmap display
- > Innovative design; compact, lightweight, includes easy-to-use navigation keys
- > Two language options (English and Spanish)
- > Timesaving tools include voice memos, calculator, contact directory, alarm clock, stopwatch, electronic games
- > Tegic™ T9® Text Input software for predictive, rapid text entry
- > Dual band/trimode: Use this Sprint PCS Phone™ anywhere on the Sprint PCS Nationwide Network and for roaming use on select cellular networks where Sprint PCS® has implemented roaming agreements
- > Long battery life: Standard Lithium Ion (Lilon) battery provides up to 3.25 hours of continuous talk time and up to 5 days of continuous standby time in digital mode; provides up to 50 minutes continuous talk time or up to 14 hours continuous standby time in analog mode
- > Voice-activated dialing: Record entries into your Internal Phone Book, then access them by simply speaking the name or number you wish to call
- > Headset jack
- > Includes 25 ringers plus vibrate alert

TECHNICAL SPECIFICATIONS

- > CDMA Talk Time: Up to 3.25 hours
- > CDMA Standby Time: Up to 5 days
- > Analog Talk Time: Up to 50 minutes
- > Analog Standby Time: Up to 14 hours
- Times will vary based on user settings, feature use and network configurations.
- > Vcoders: 13 Kbps (PureVoice™) and EVRC
- > Size: 4.72 in x 1.89 in x 0.95 in (12 cm x 4.8 cm x 2.4 cm)
- > Weight: 4.34 ounces (123 grams)
- > Operational Temperature: -22° to 140°F (-30° to 60°C)
- Battery performance limited in temperatures below 32°F (0°C)

OPTIONAL ACCESSORIES

For the full line of Kyocera Wireless Corp. accessories visit our Web store at www.kyocera-wireless.com/store or contact your local service provider or retailer.



Battery



Chargers



Hands free



Sprint PCS®



Visit our Web site at www.kyocera-wireless.com

Kyocera Wireless Corp.
10300 Campus Point Drive, San Diego, CA 92121
USA 1-800-349-4188, Outside USA 1-858-882-1410

©2001 Kyocera Wireless Corp. All rights reserved. Kyocera is a registered trademark of Kyocera Corporation. The Genuine Accessories by Kyocera logo is a trademark of Kyocera Wireless Corp. PureVoice is a trademark of QUALCOMM Incorporated. Sprint, Sprint PCS, Sprint PCS Phone, Sprint PCS Wireless Web and the diamond logo are trademarks of Sprint Communications Company. T9 is a registered trademark and Tegic is a trademark of Tegic Communications, Inc. All other marks are held by their respective owners. Features and specifications are subject to change without notice. Non-metric weights and measures are approximate. Not all products may be available in your area.

*Depending on services available from your carrier.

Printed in USA 10/01

TMM000448-1

