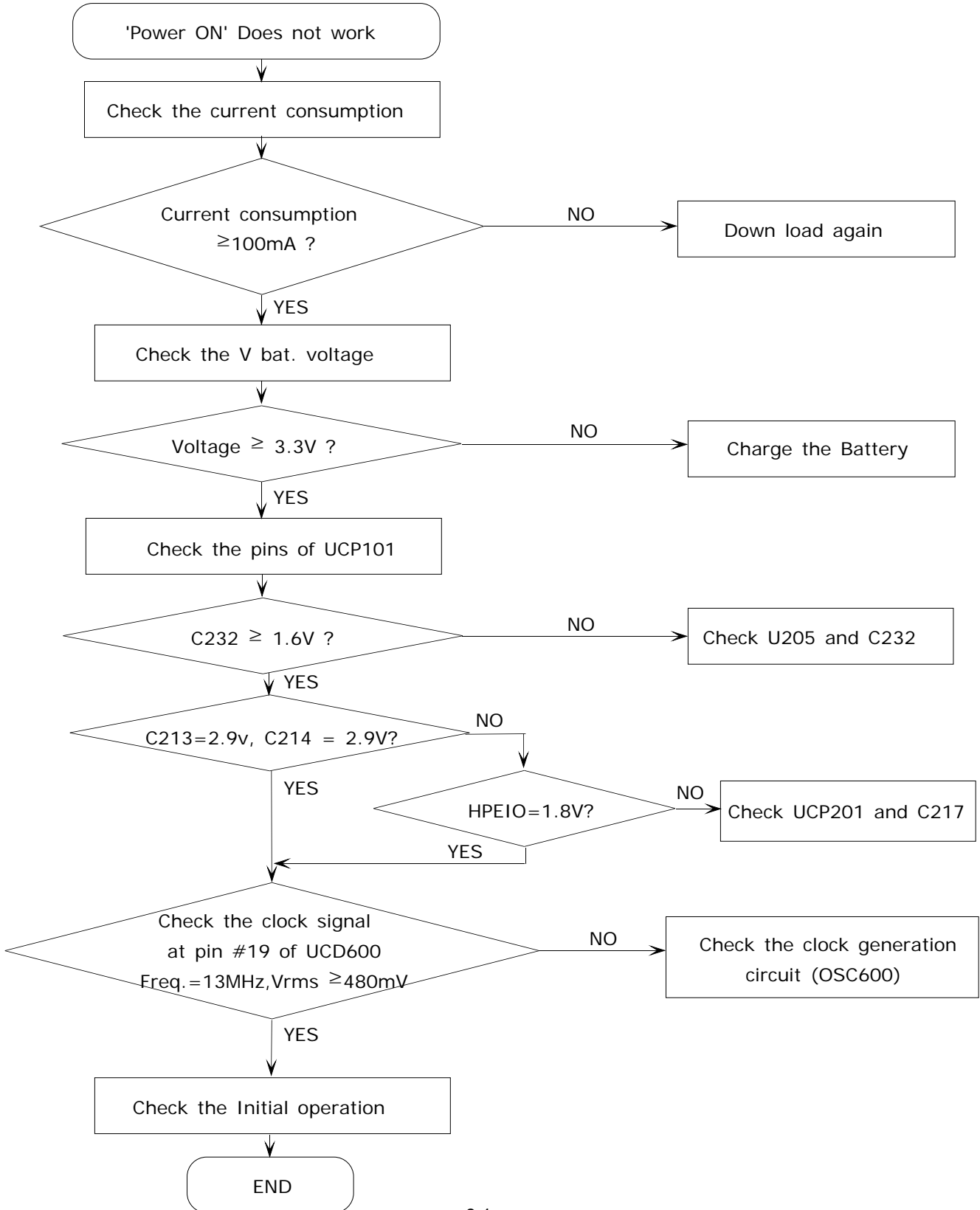
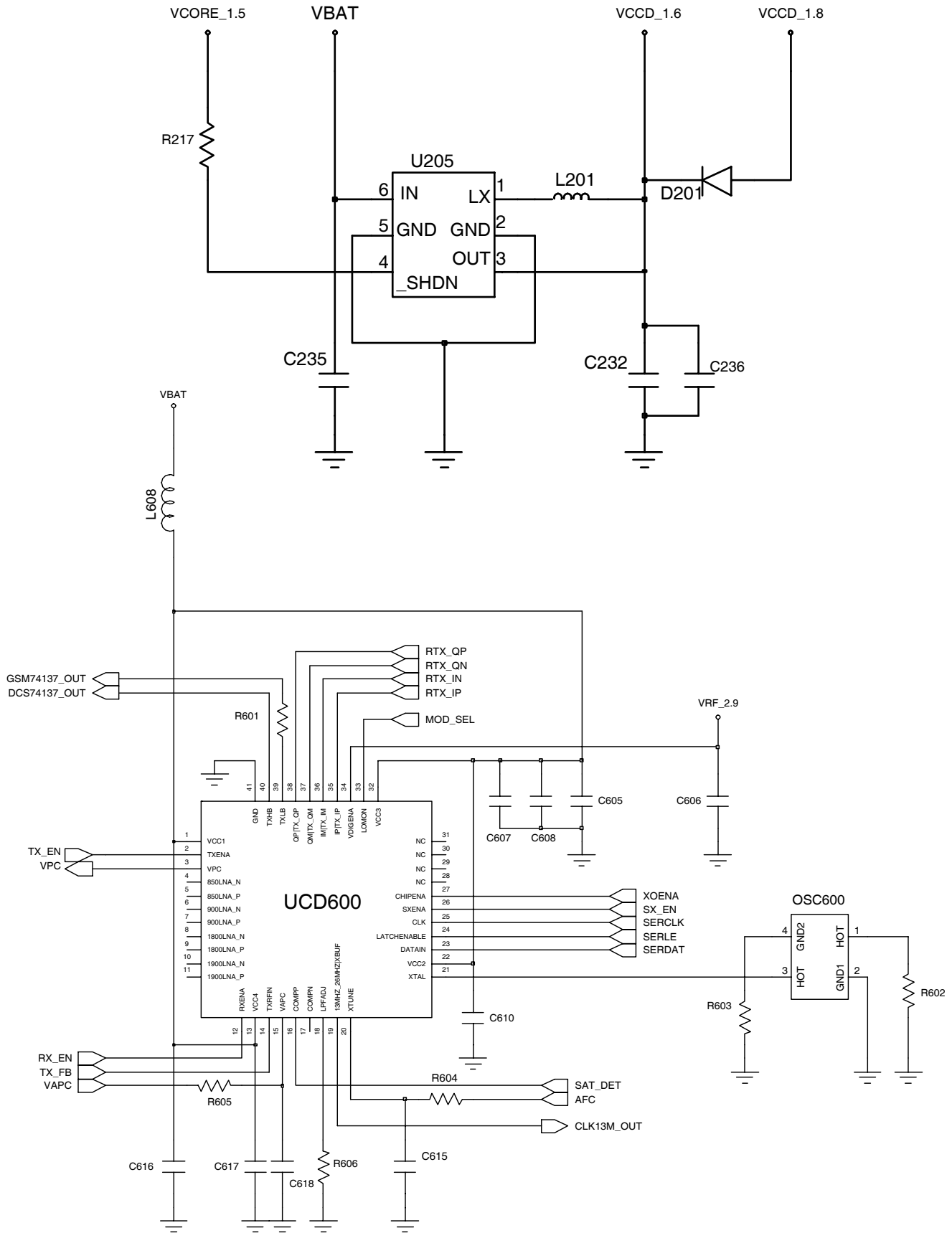


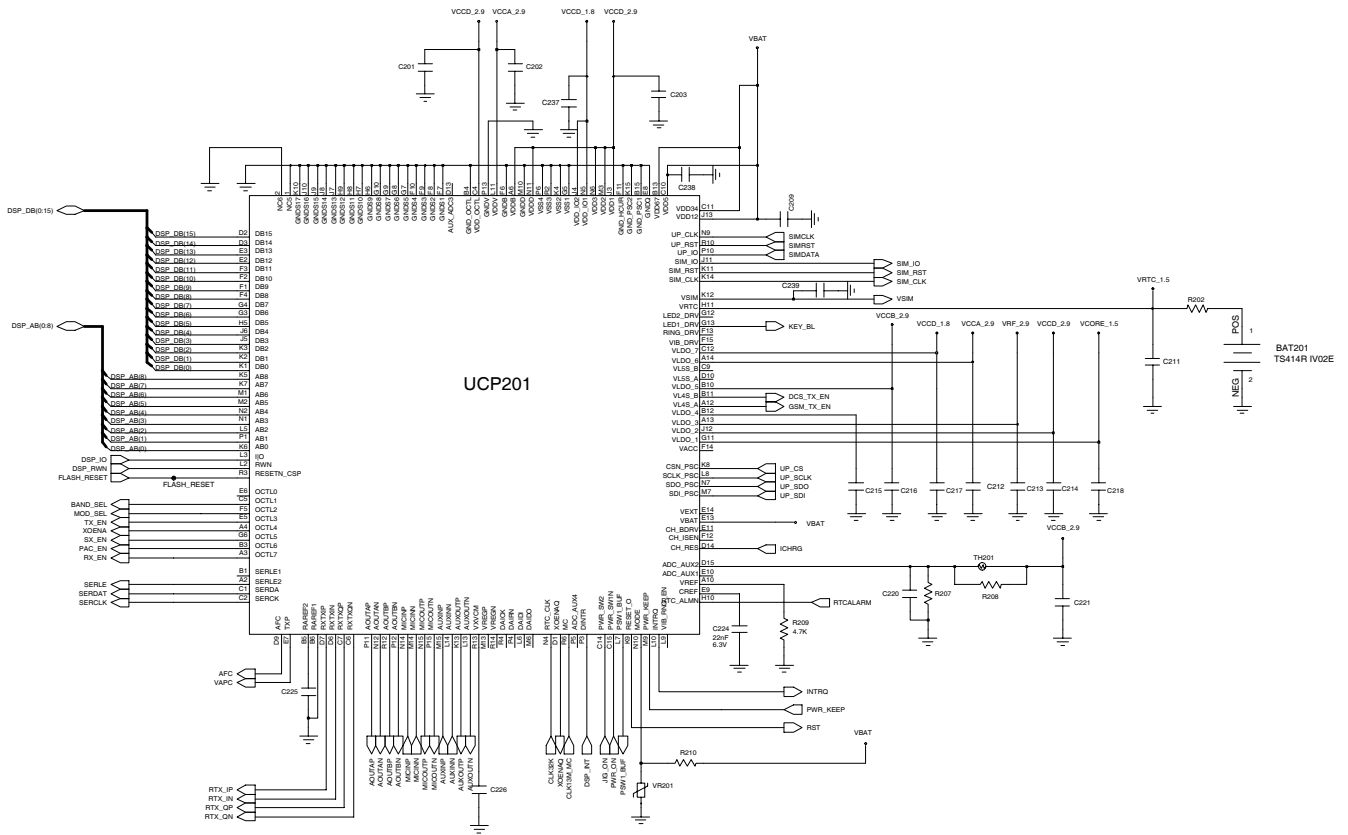
### 3. Flow Chart of Troubleshooting

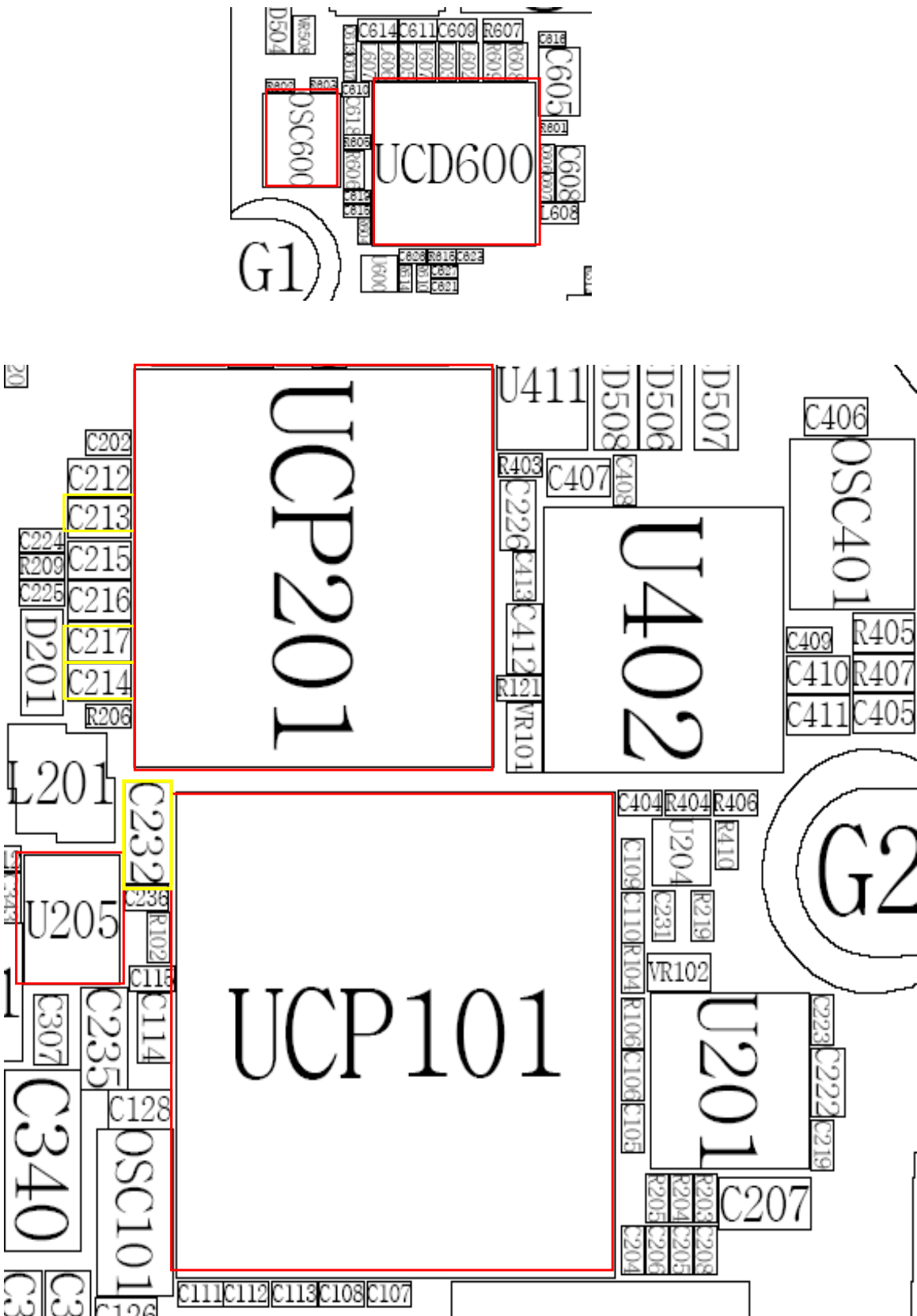
#### 3-1. Baseband

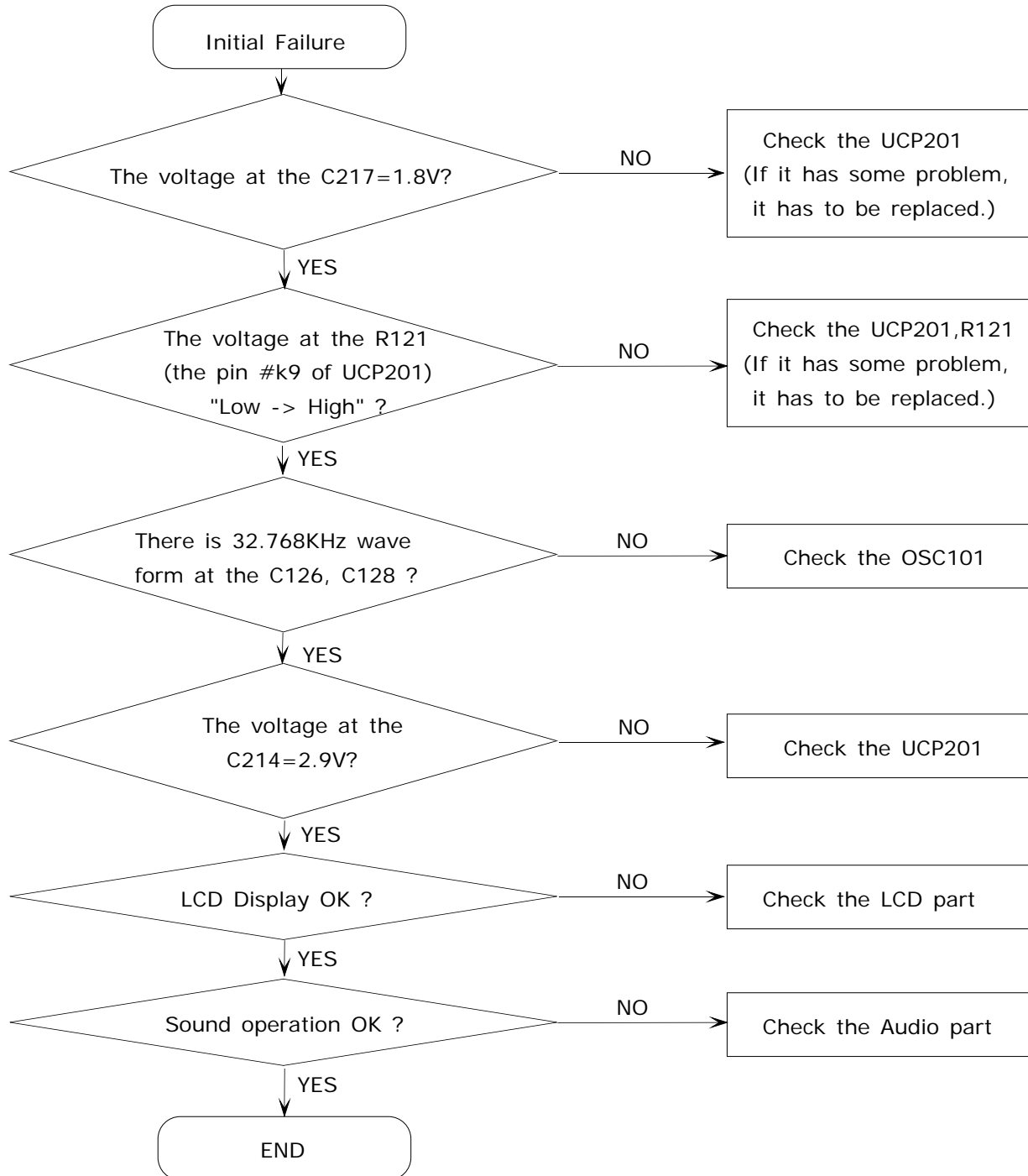
##### 3-1-1. Power ON

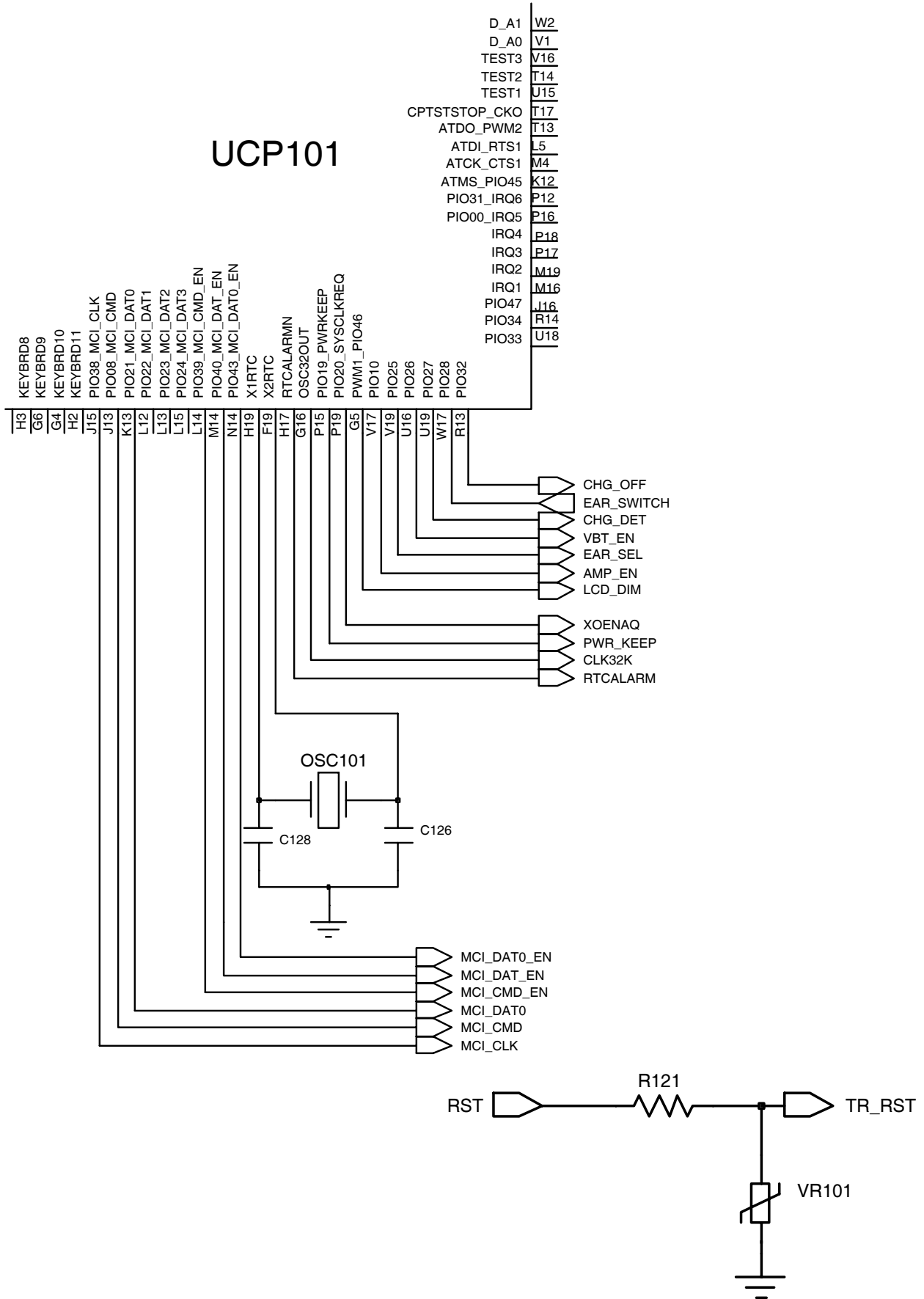


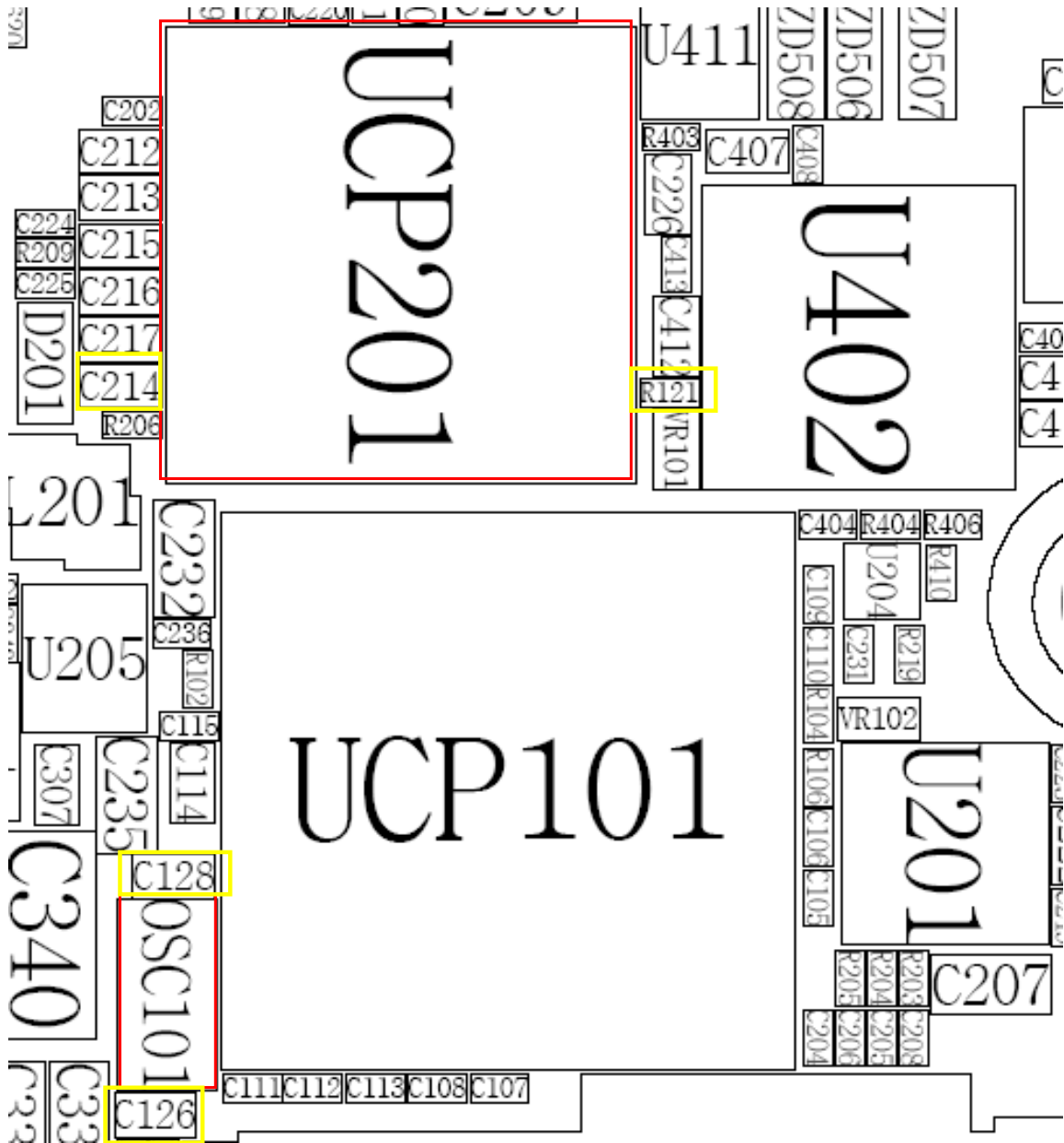




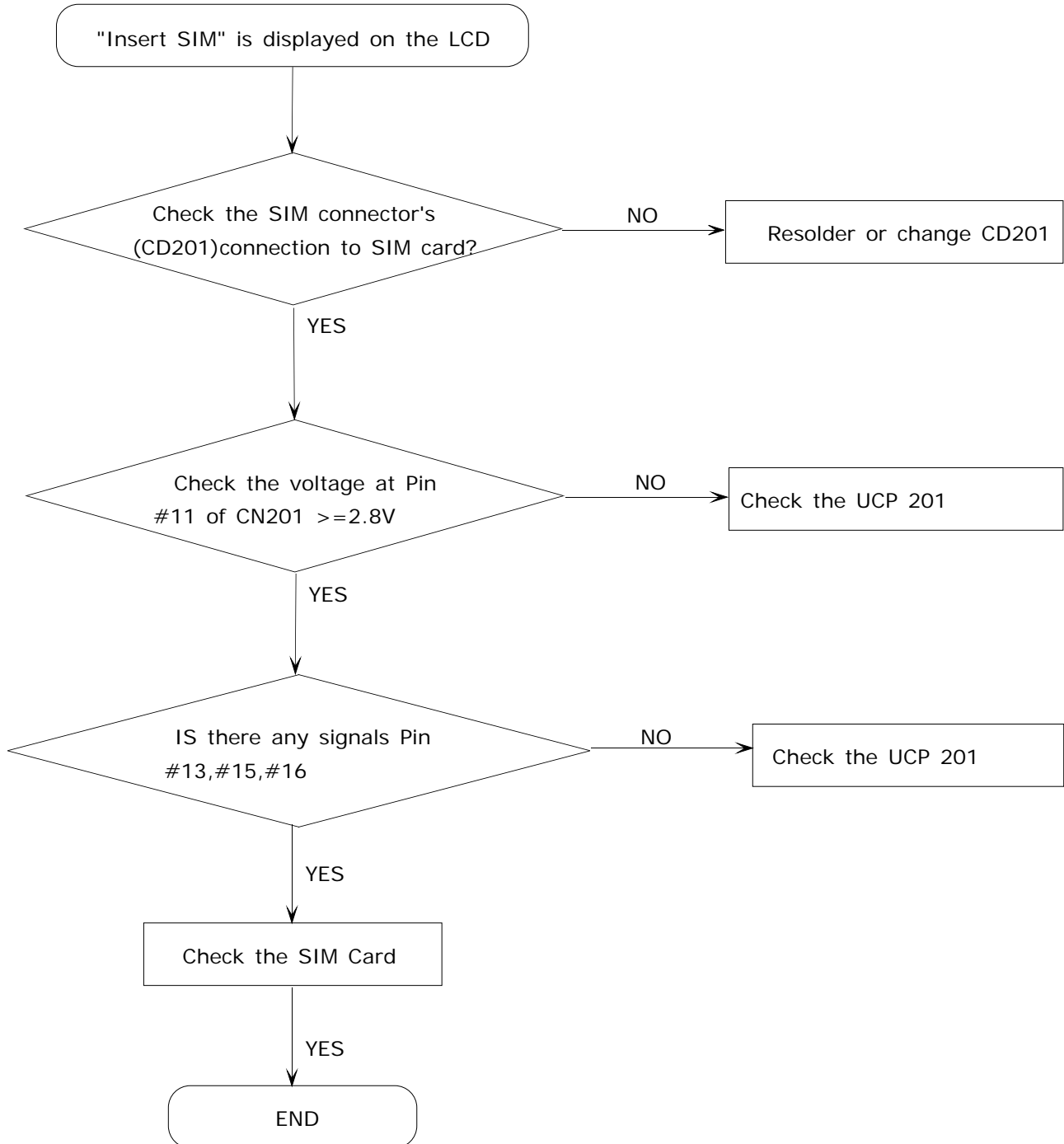


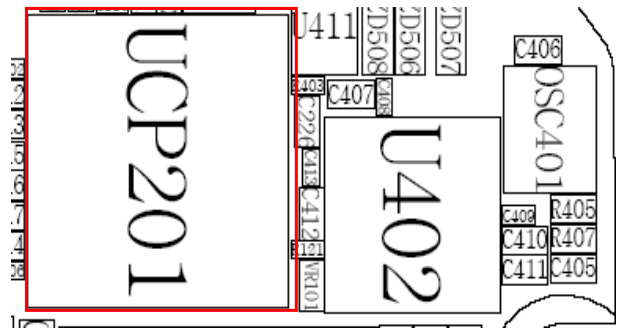
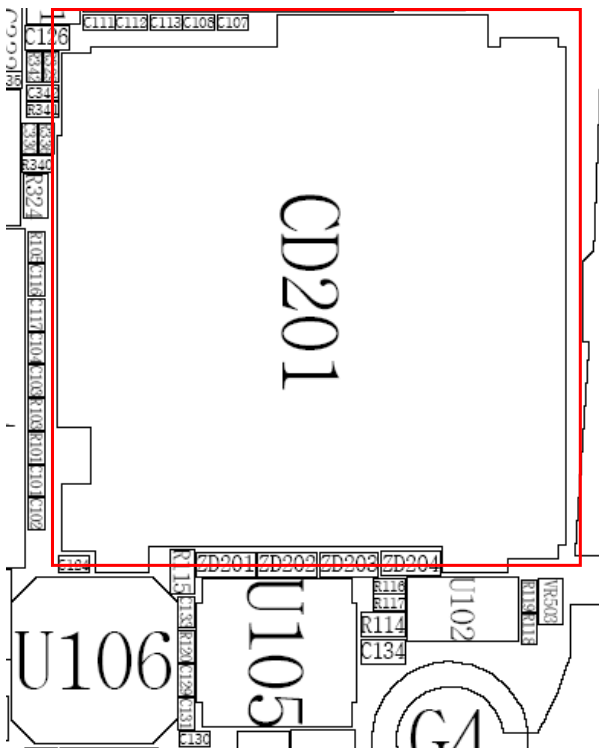
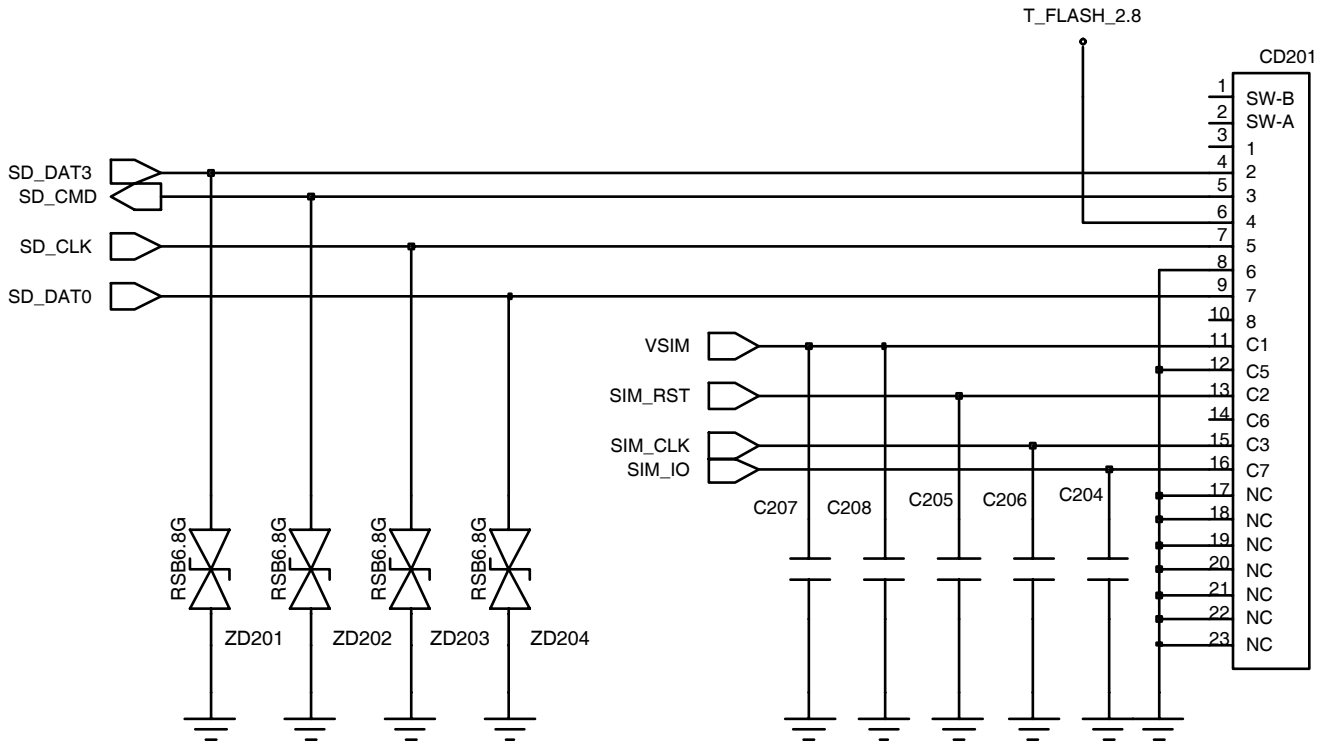
**3-1-2. Initial**



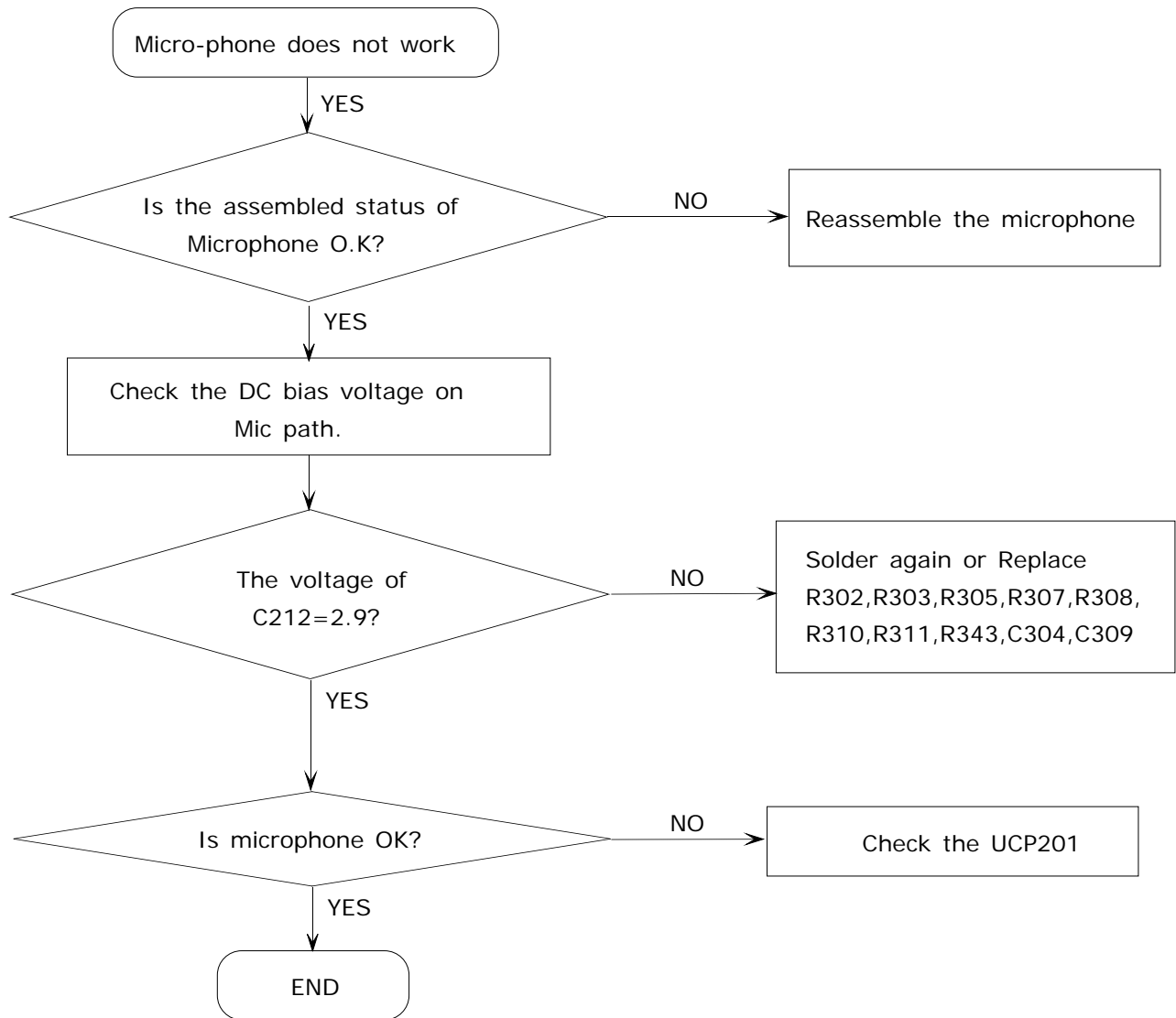


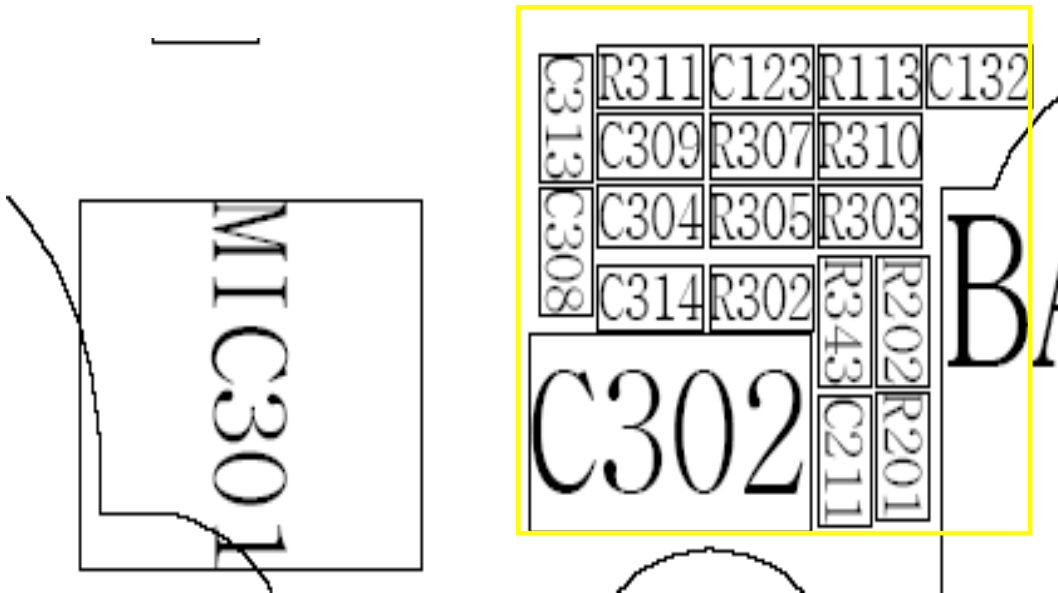
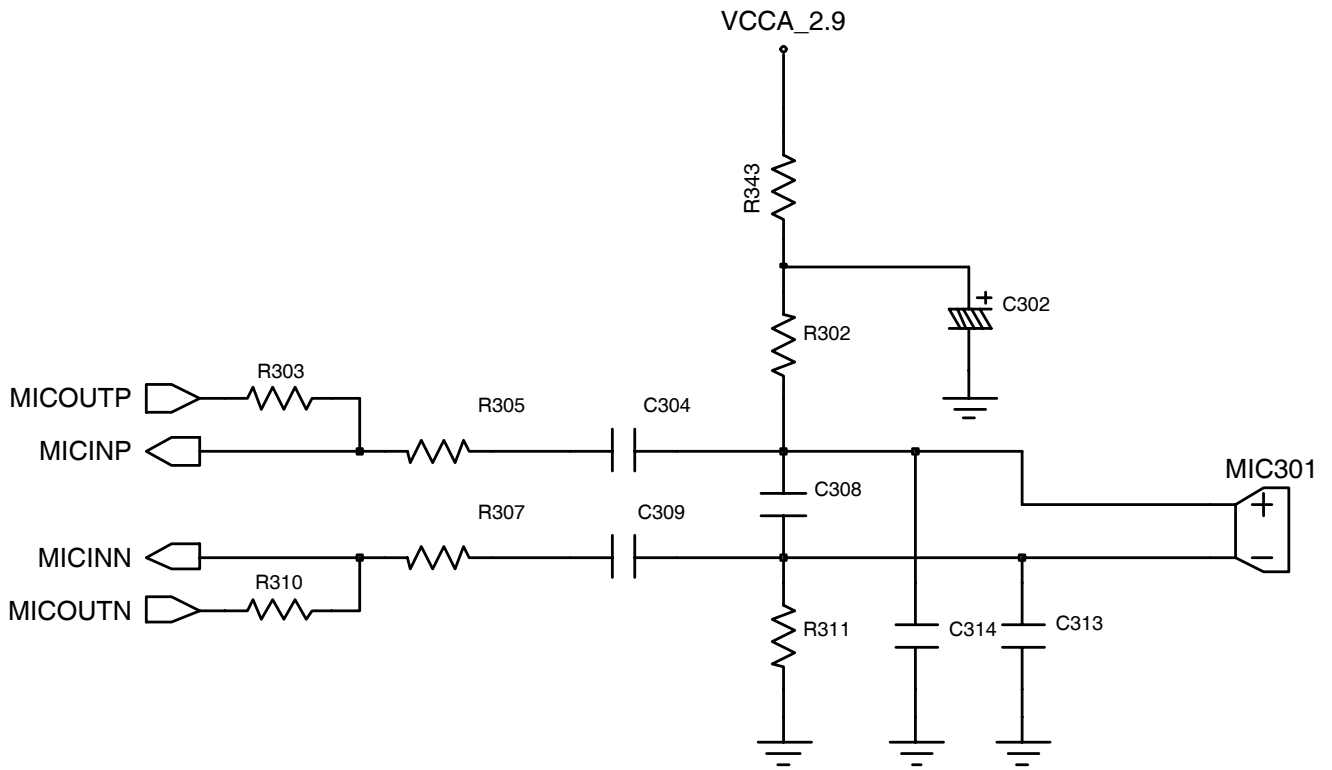
### 3-1-3. Sim Part



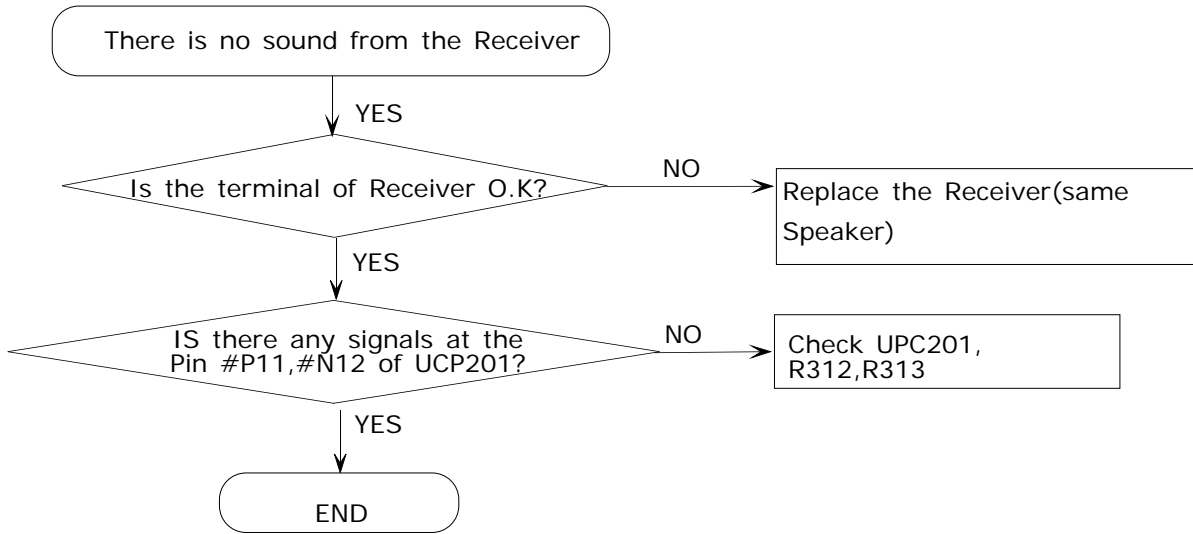


### 3-1-4. Microphone Part

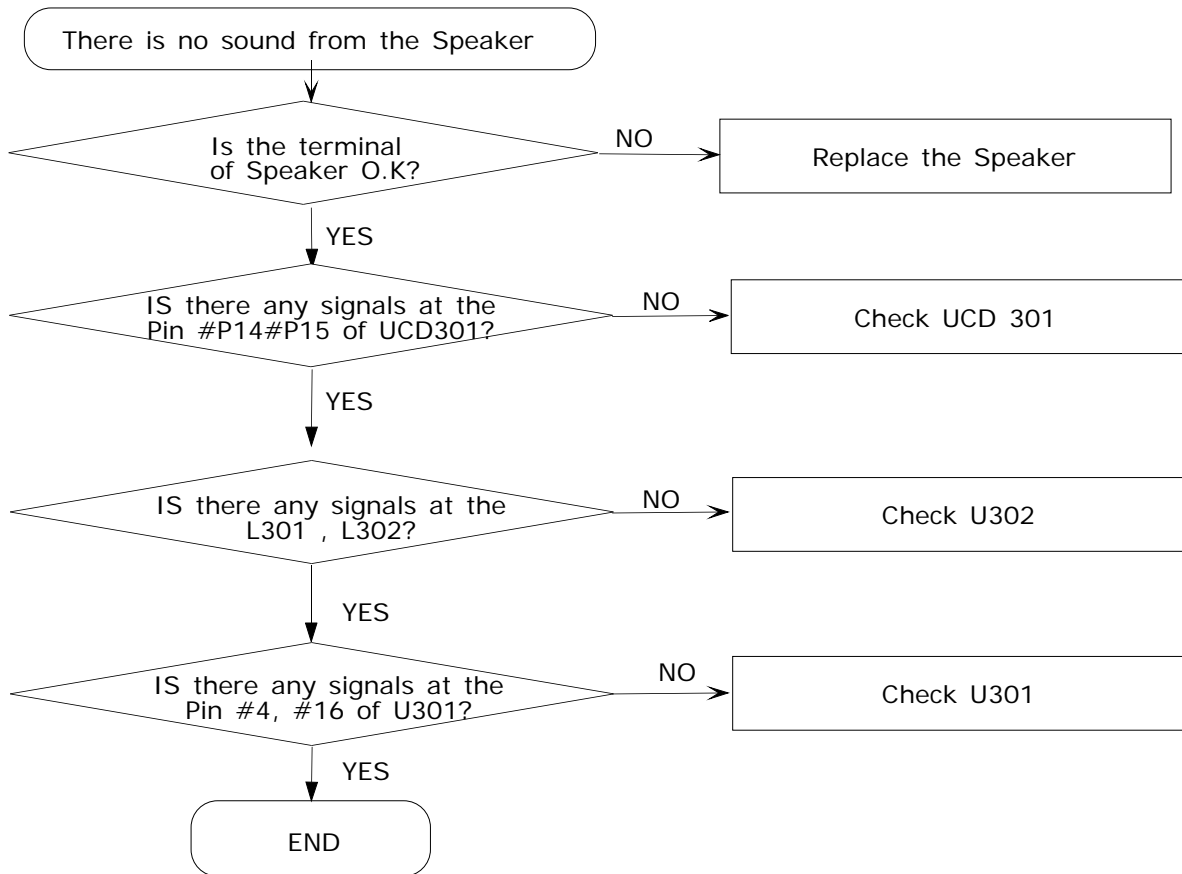


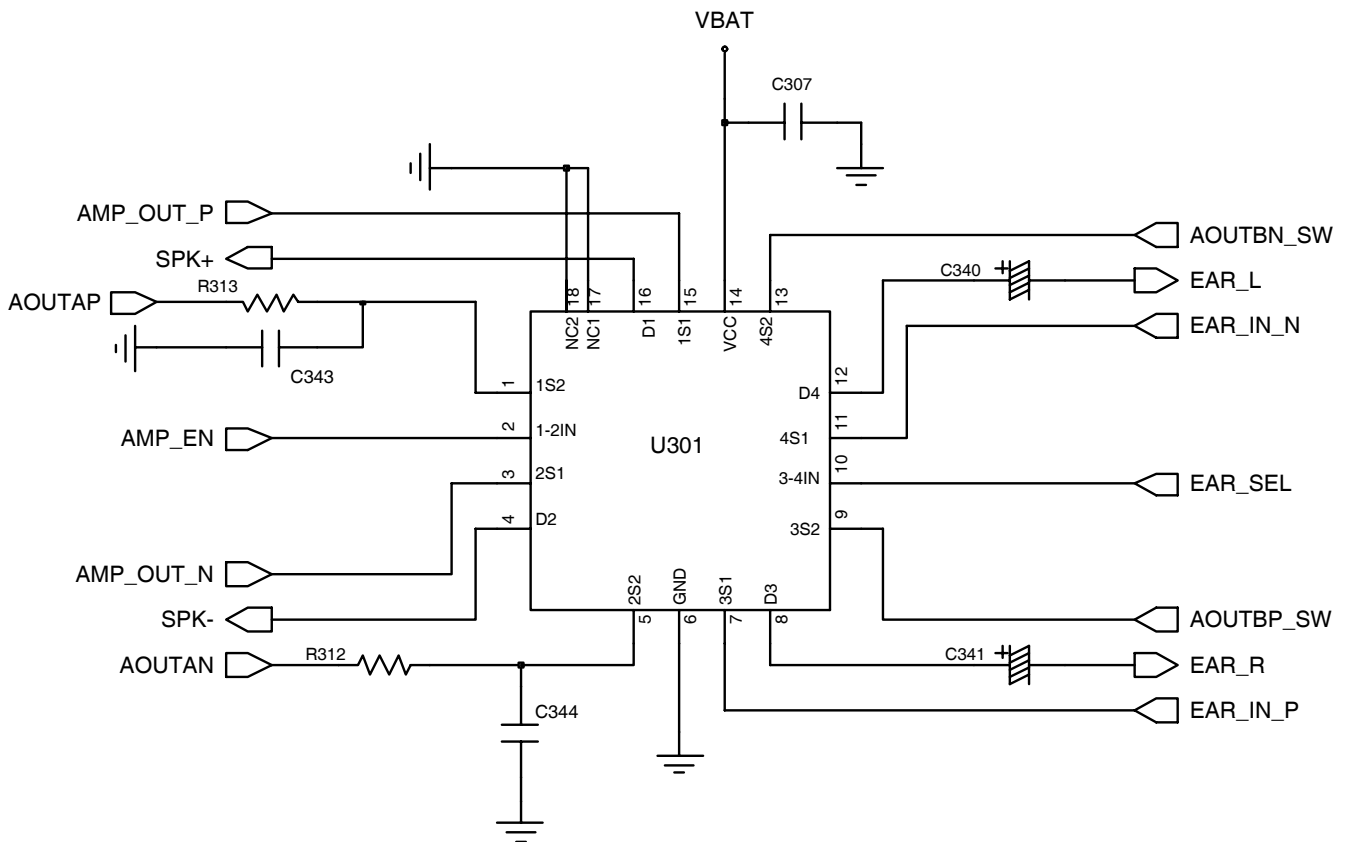
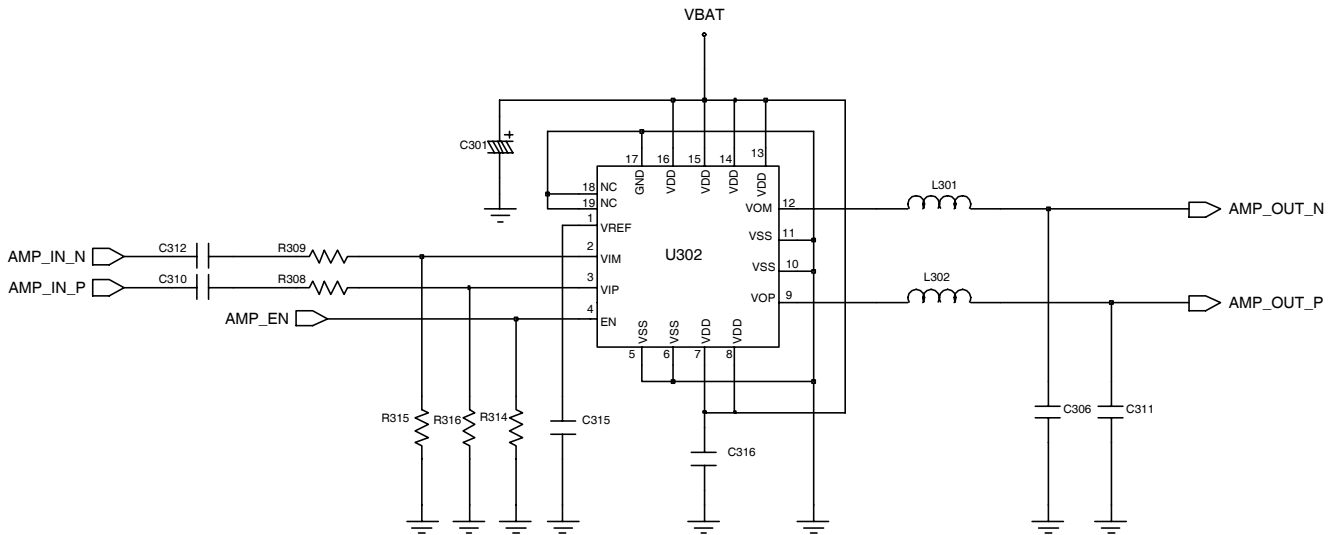


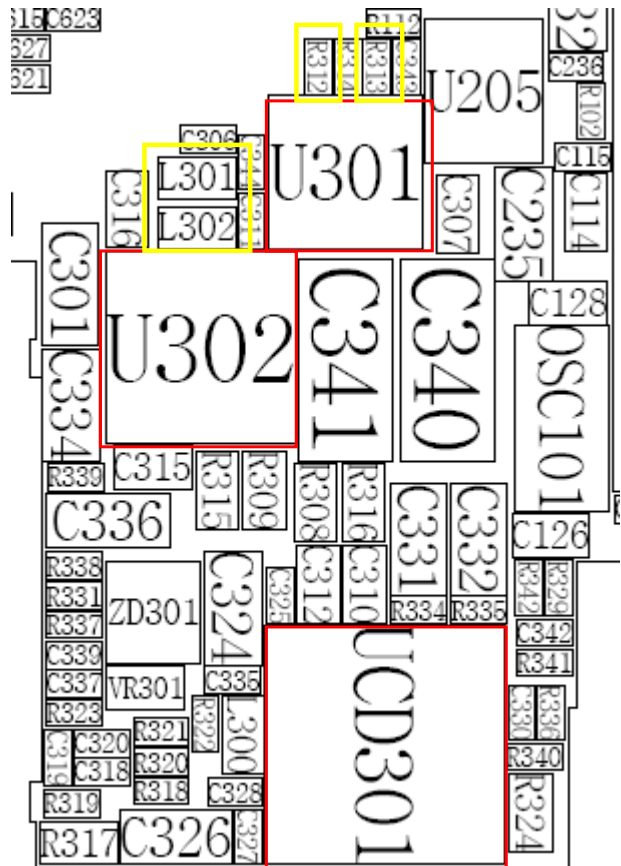
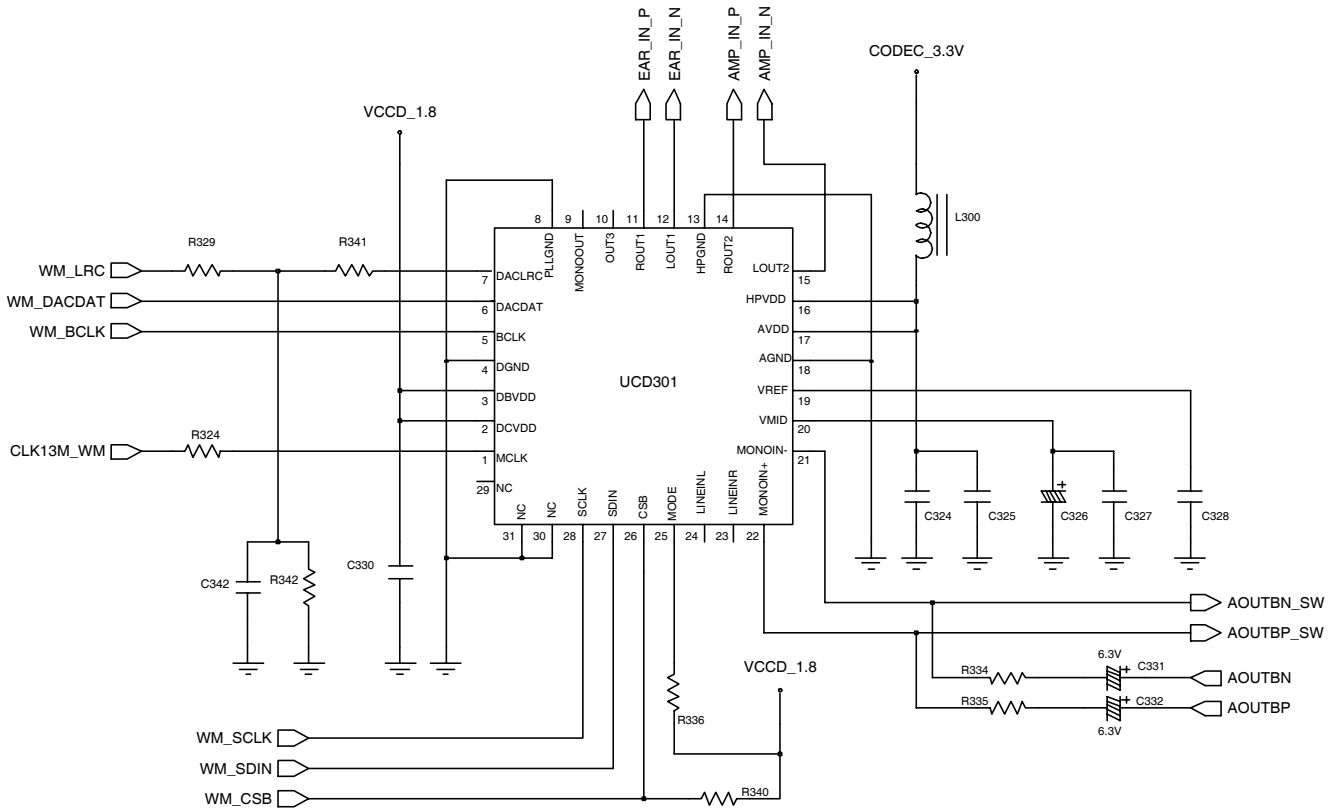
### 3-1-5. Receiver Part

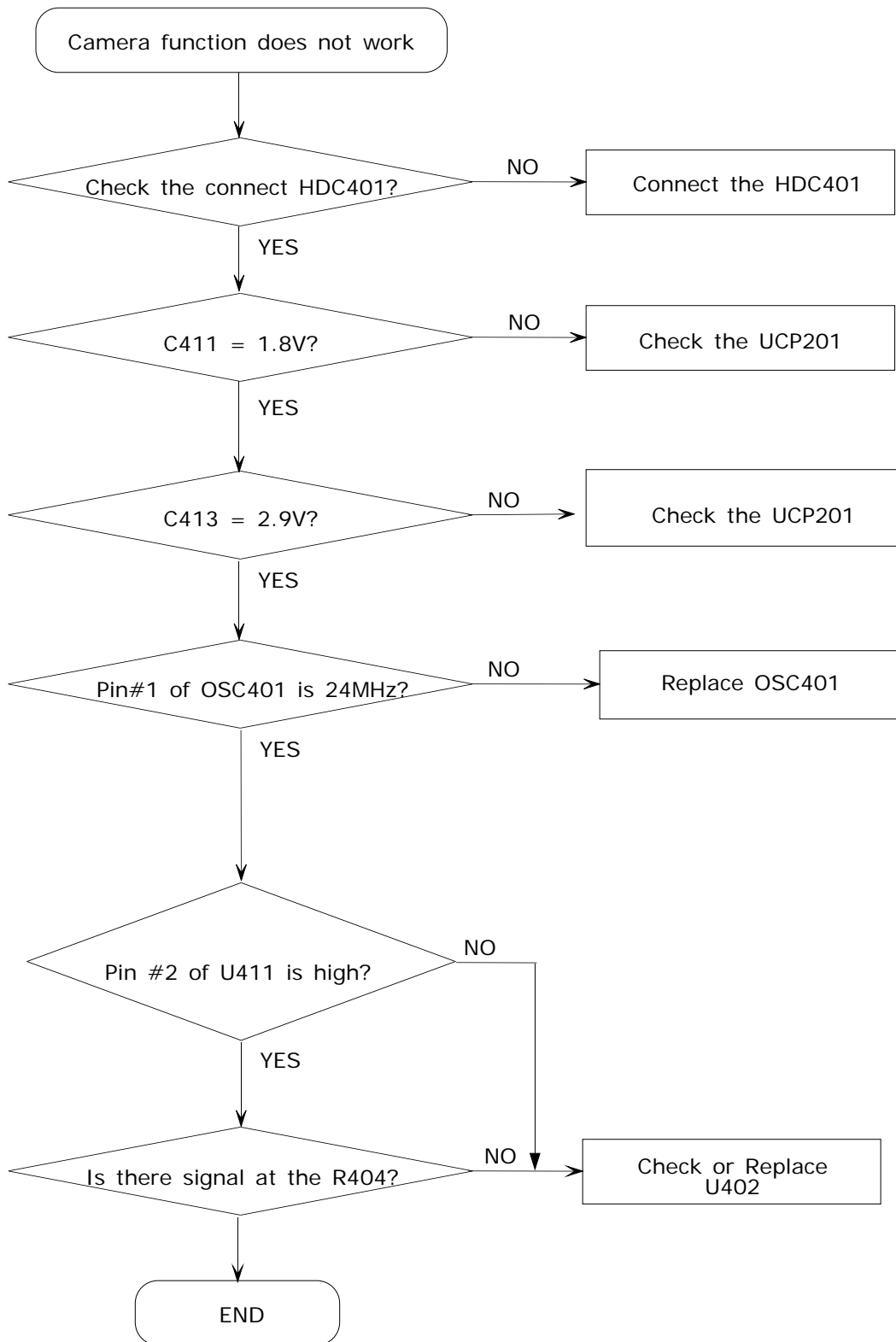


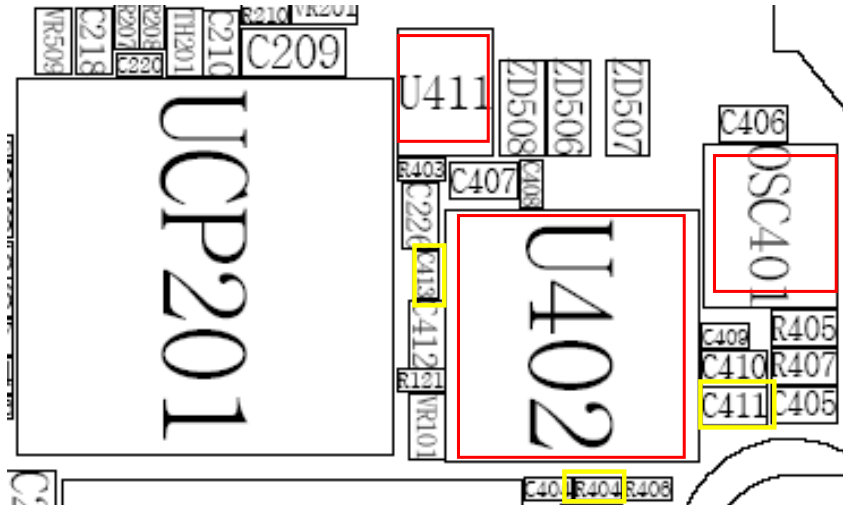
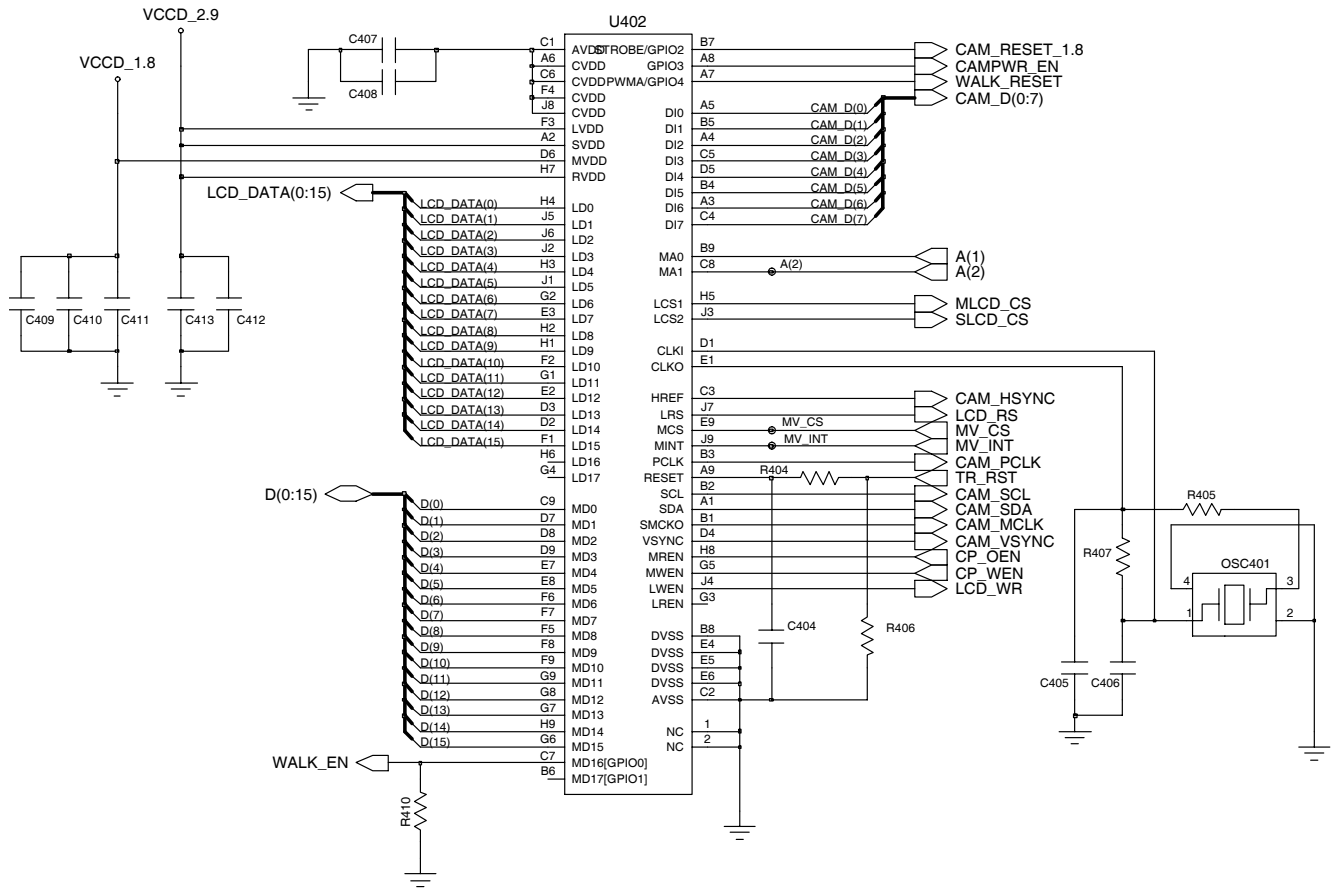
### 3-1-6. Speaker Part



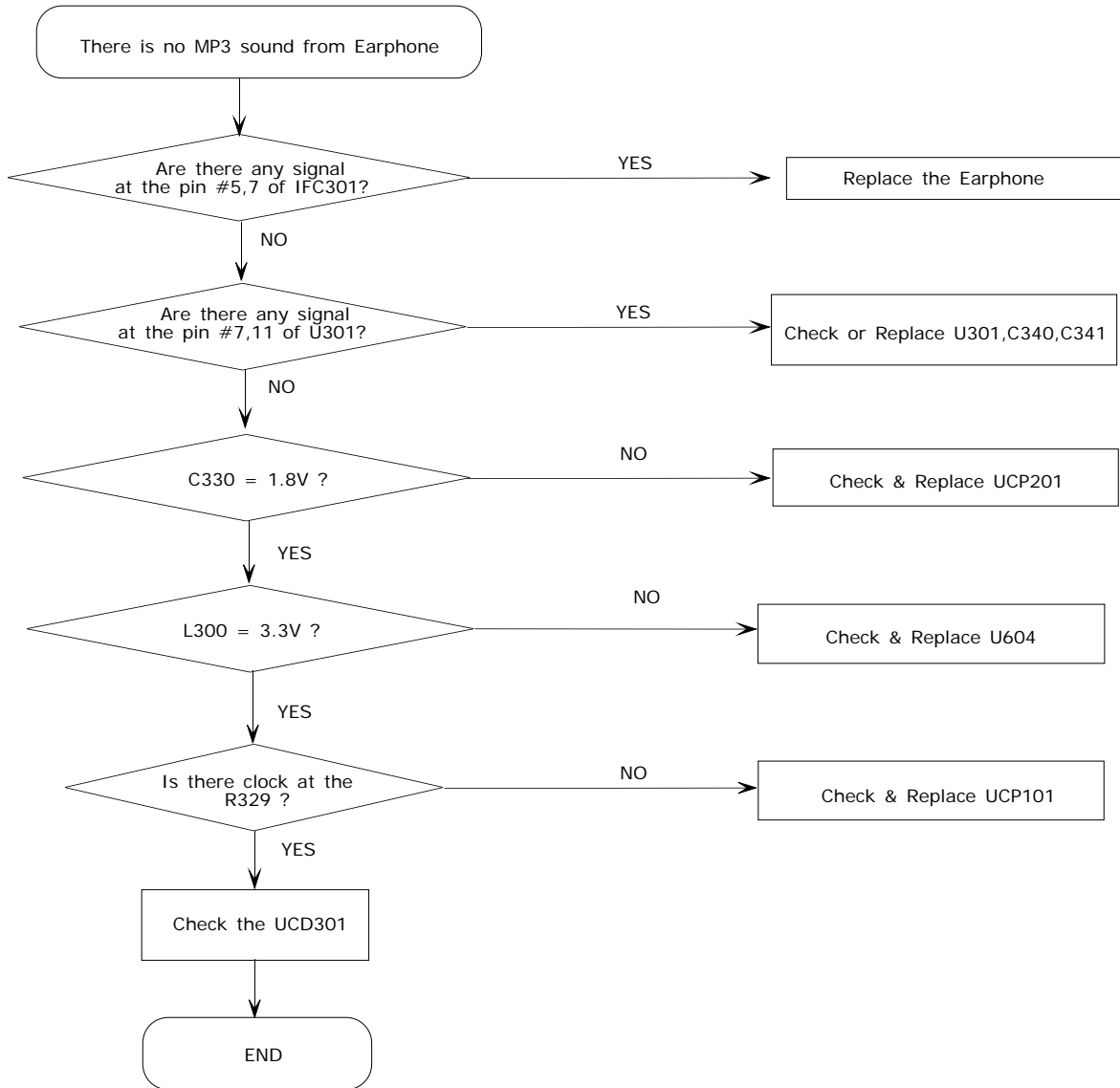




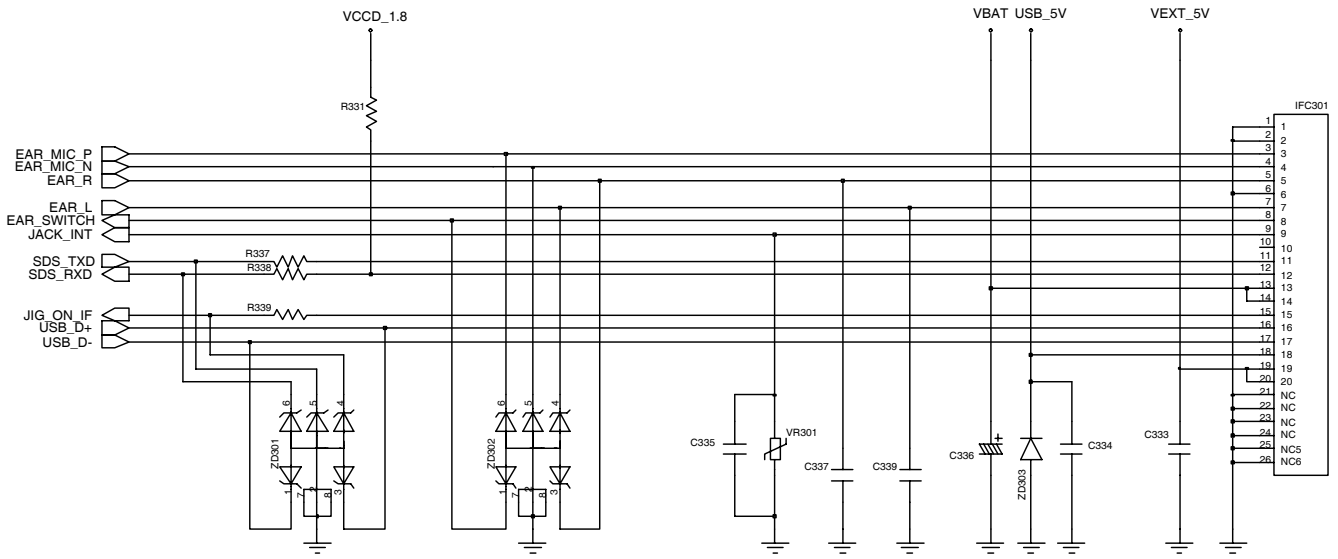
**3-1-7. Camera Part**



### 3-1-8. Mp3 Display Part

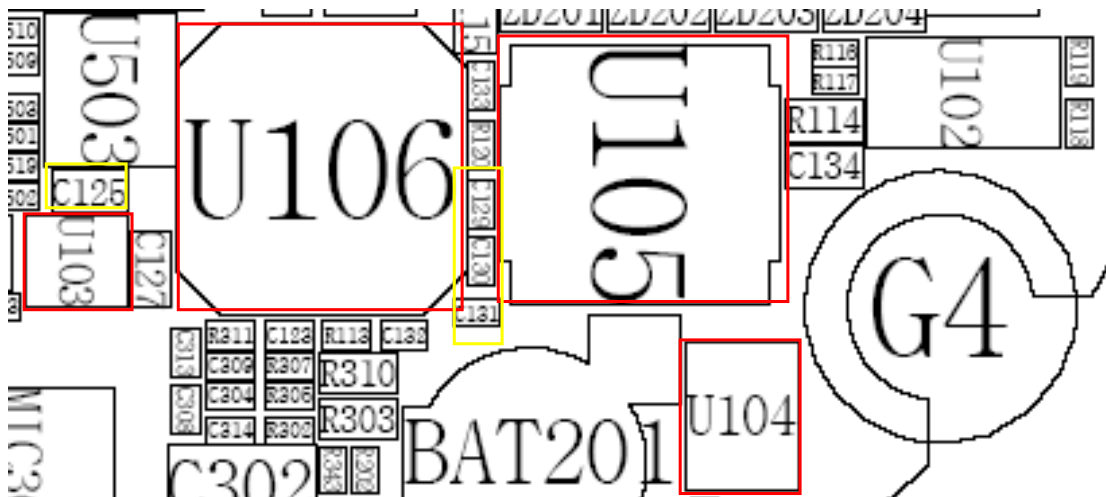
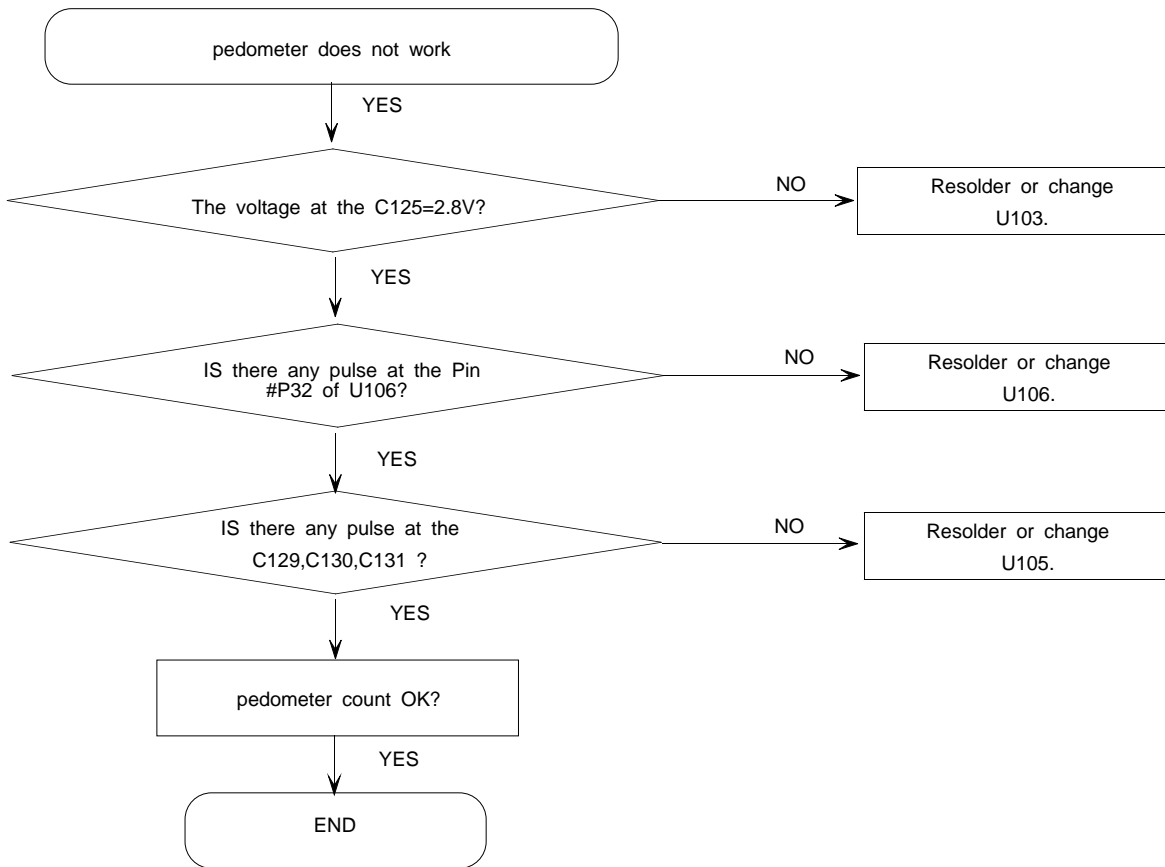


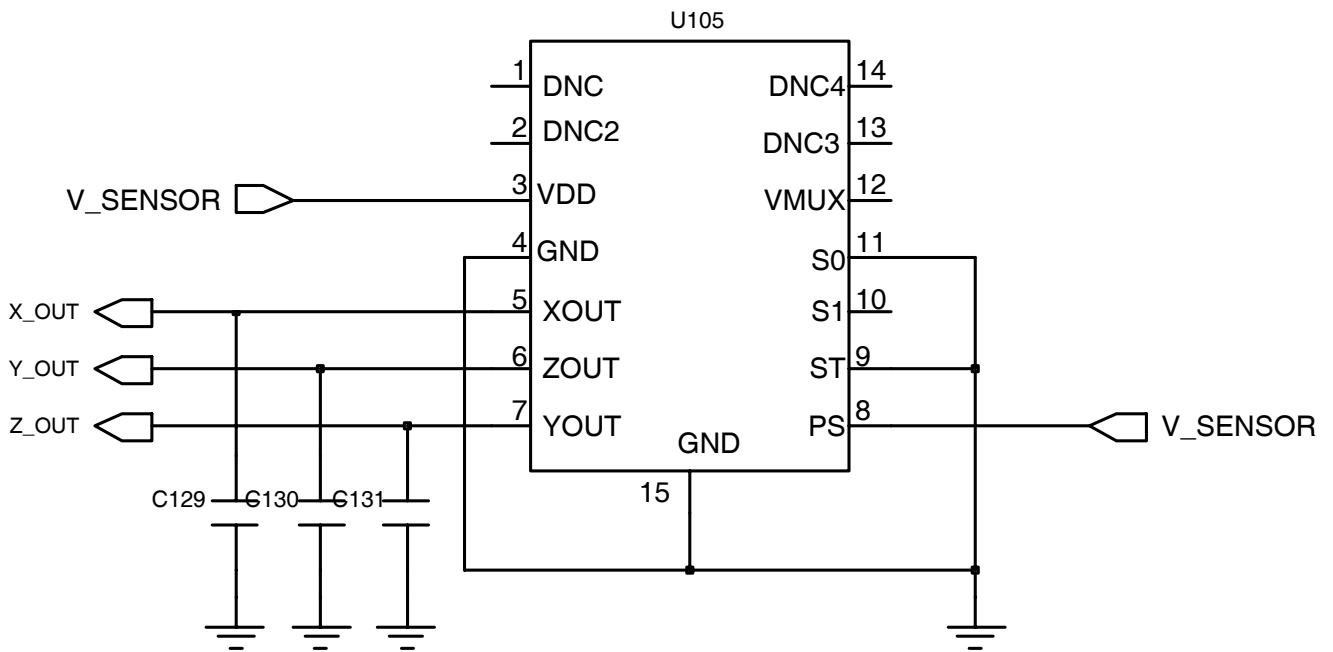
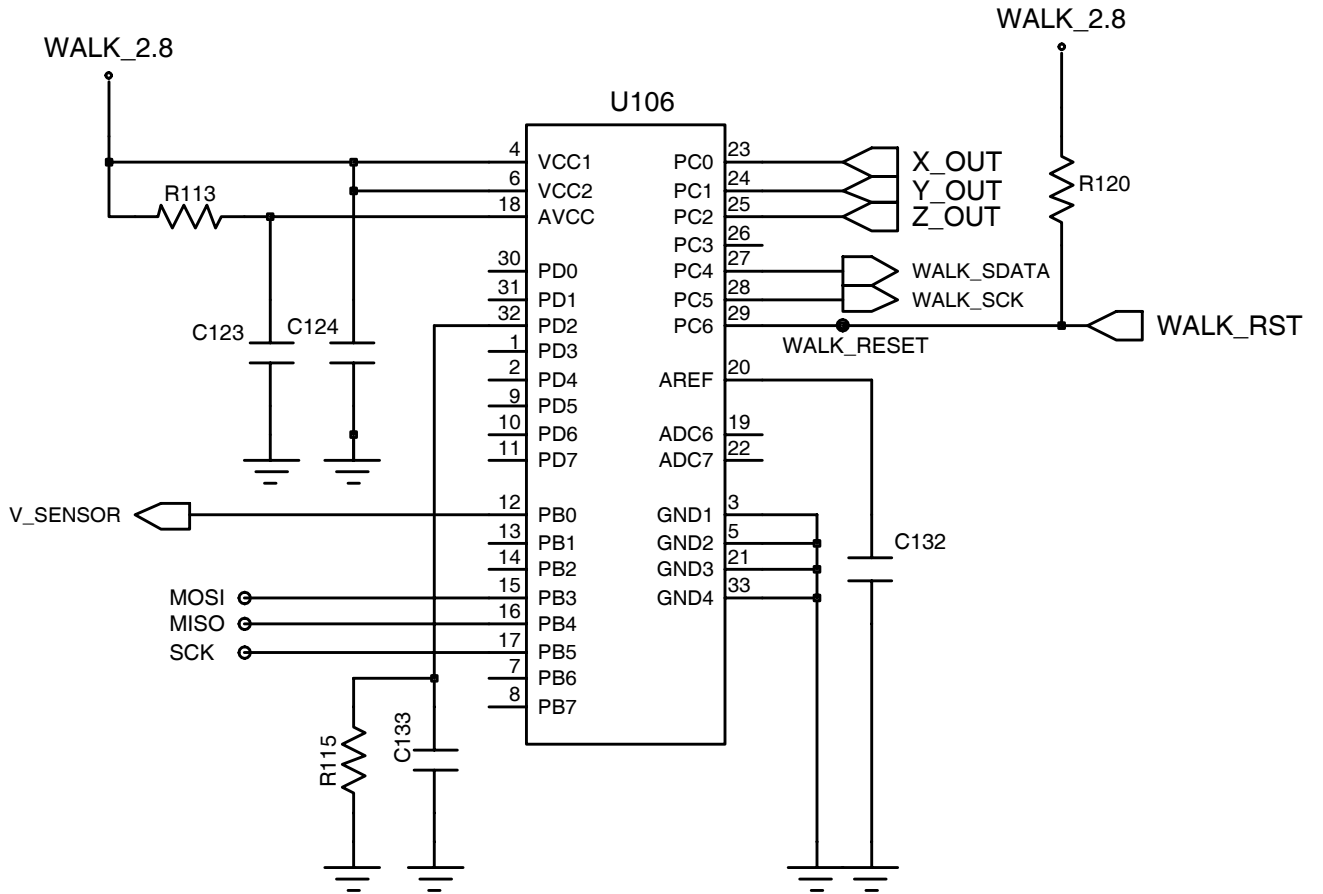
# Flow Chart of Troubleshooting

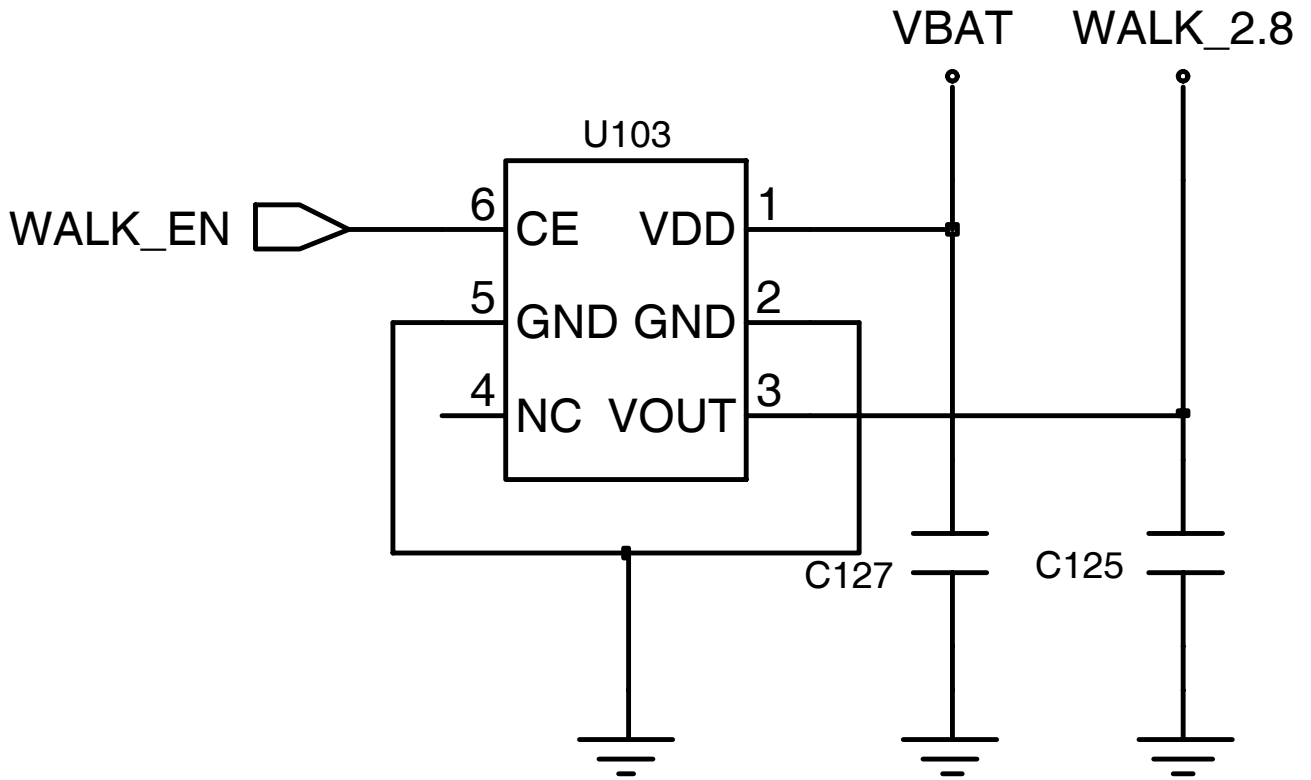




### 3-1-9. Pedometer Part

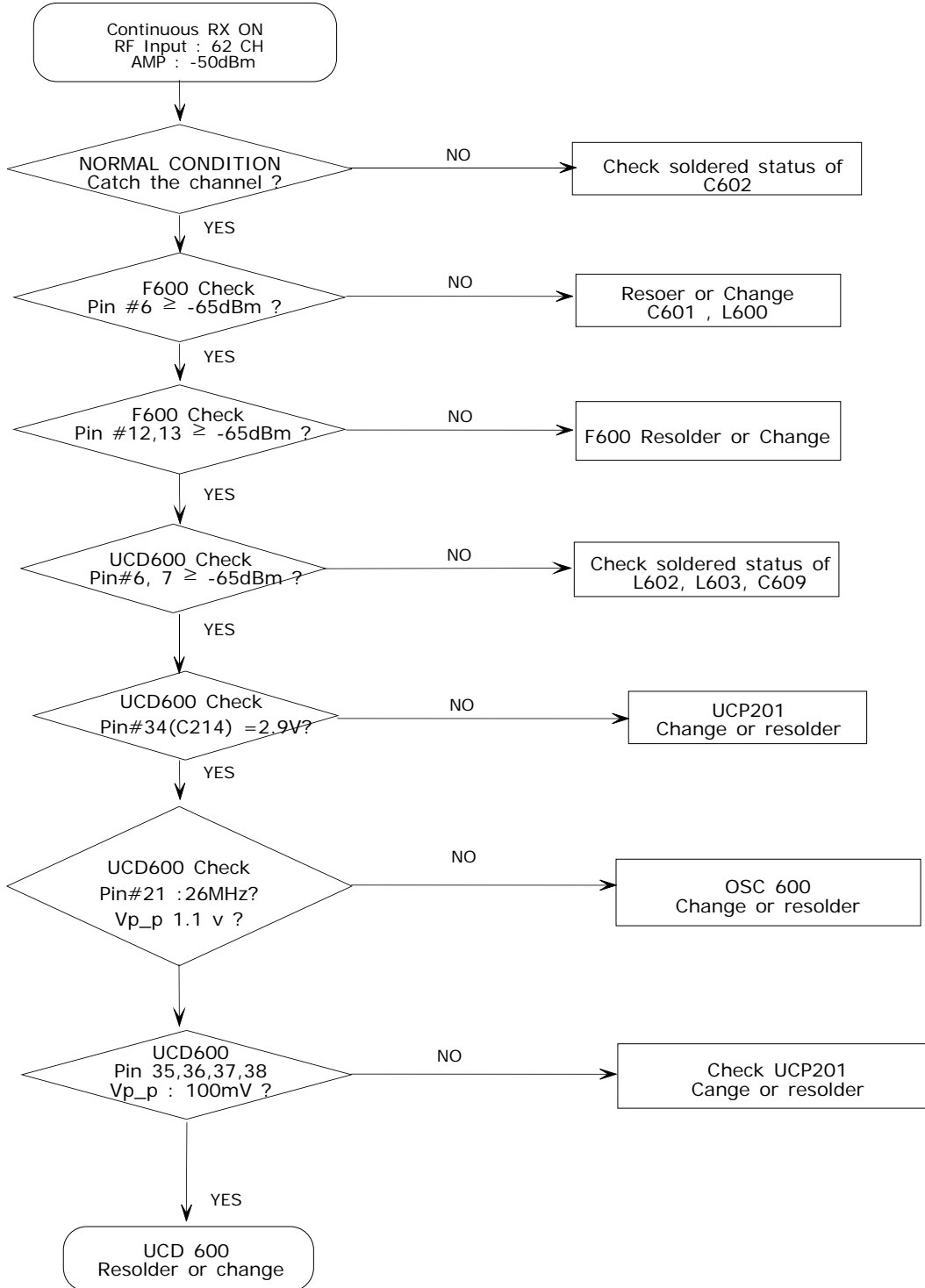




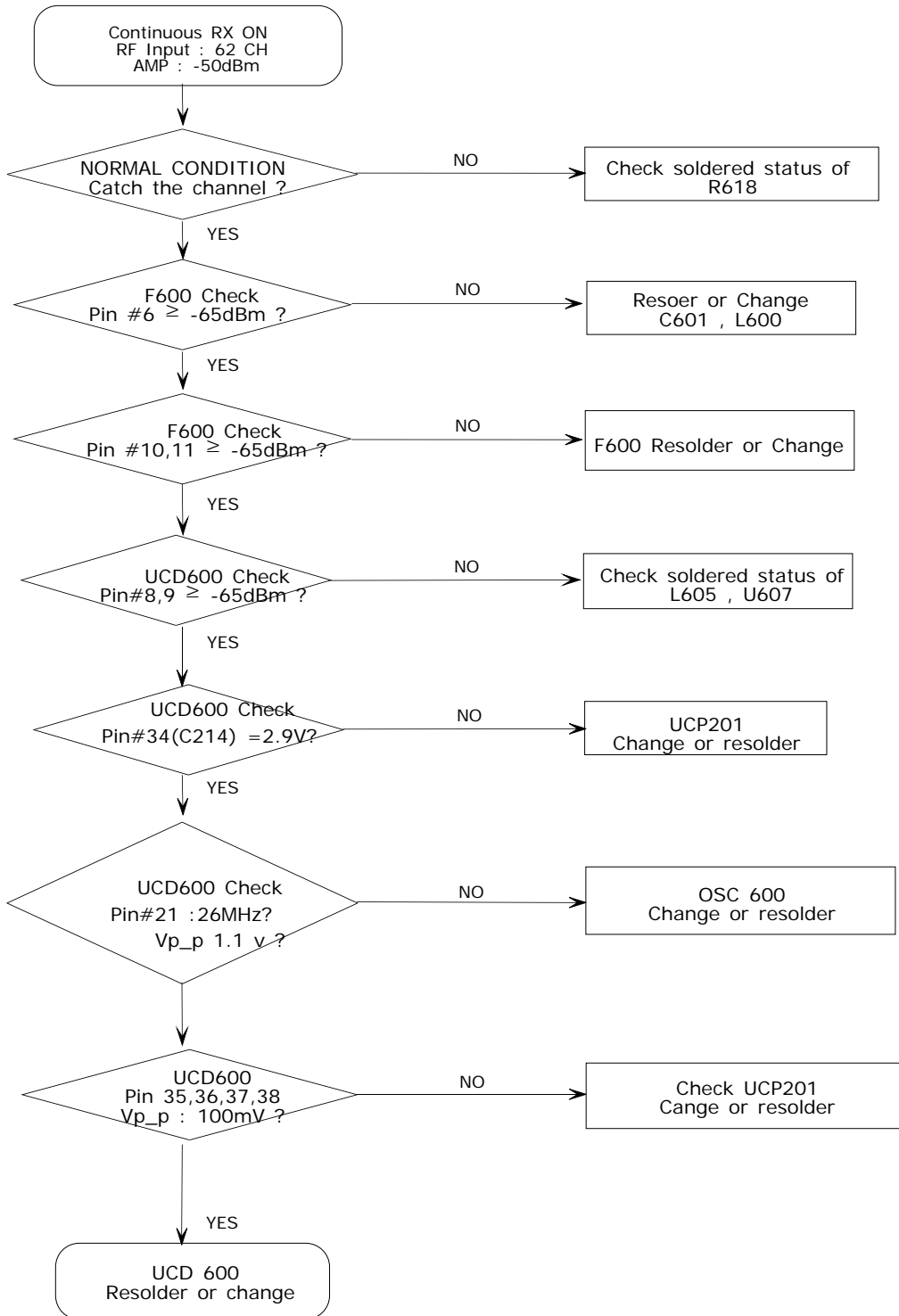


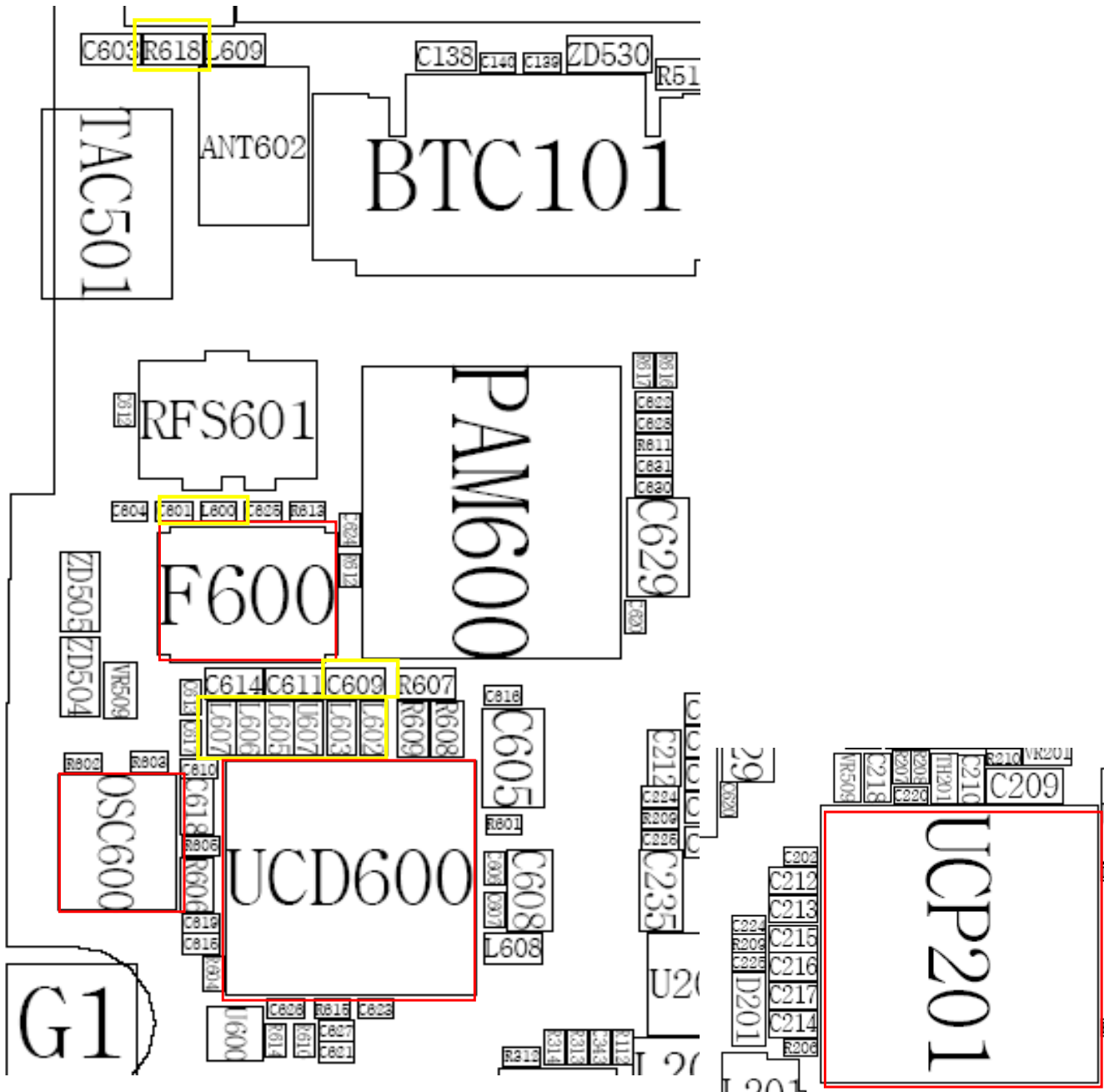
### 3-2.RF

#### 3-2-1. EGSM RX

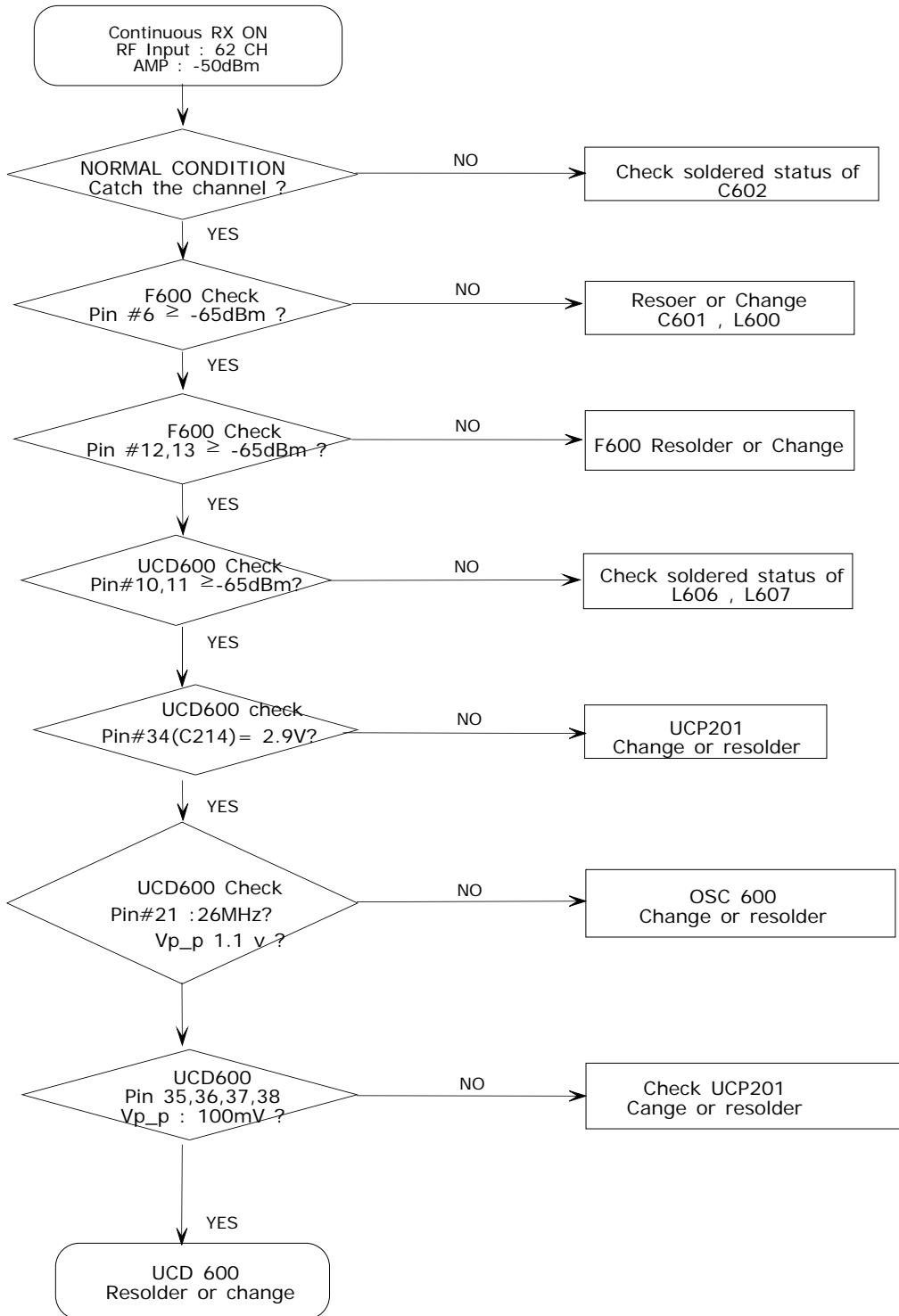


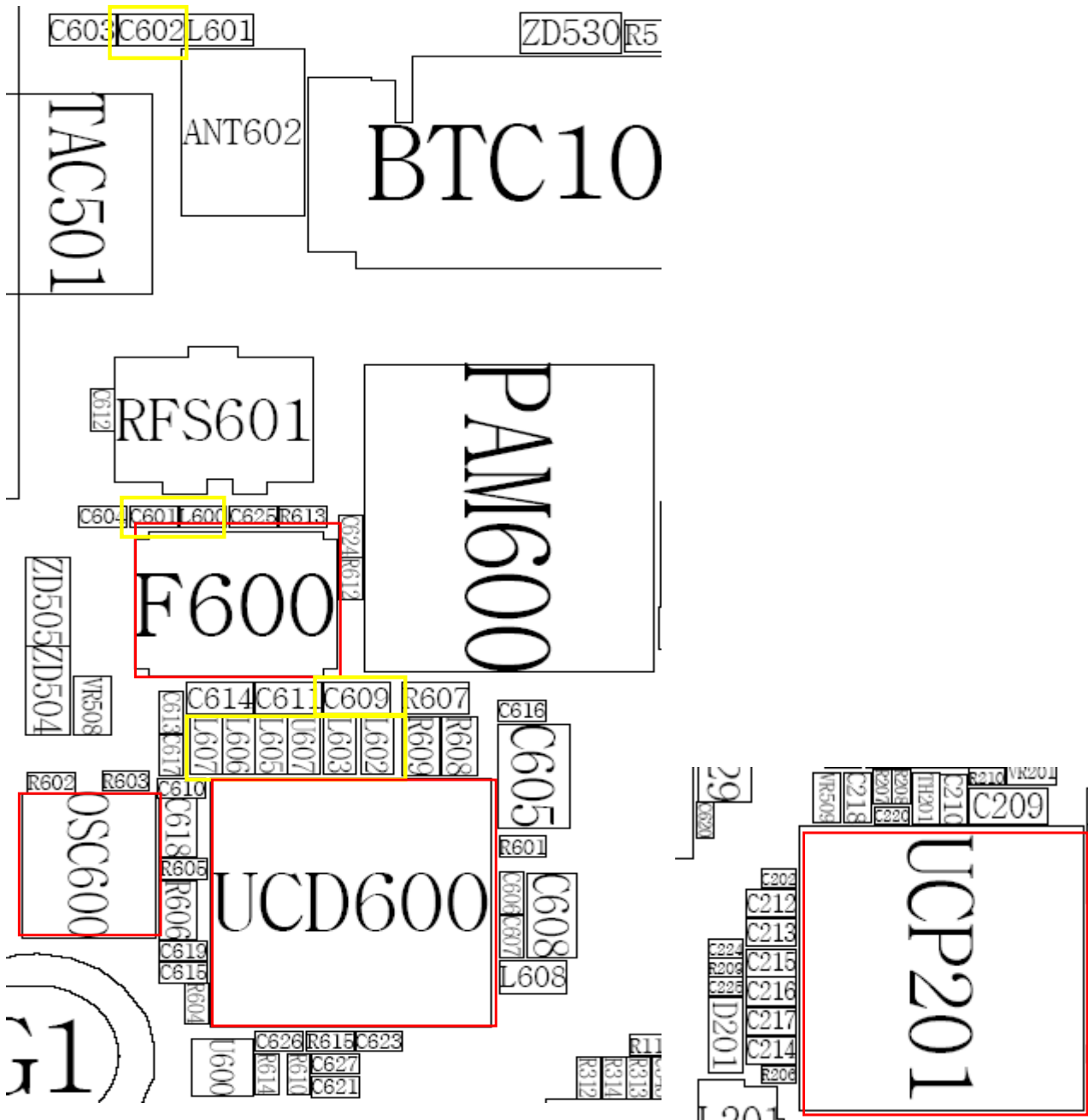
### 3-2-2. DCS RX





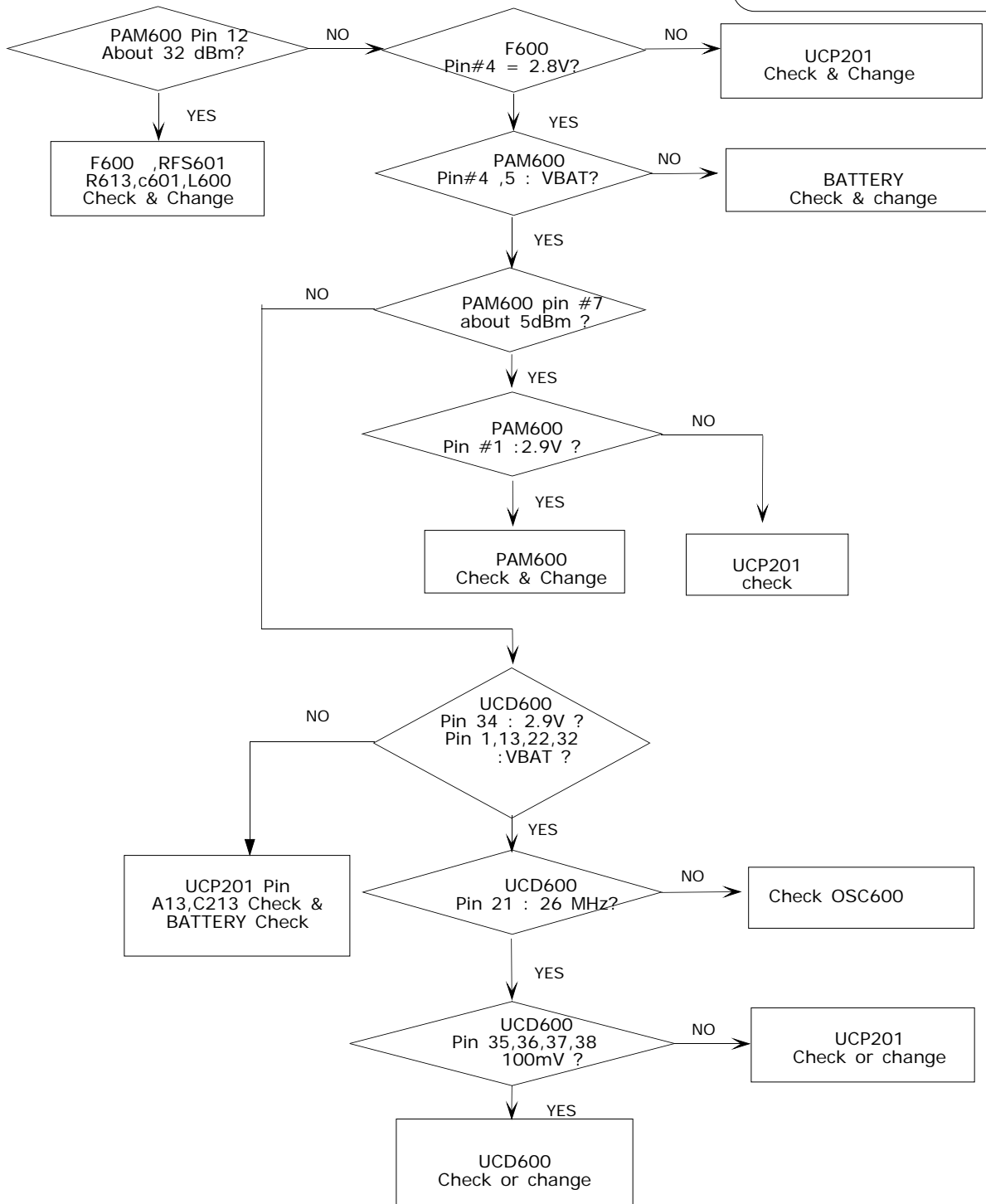
### 3-2-3. PCS RX





### 3-2-4. EGSM TX

**Continuous TX ON condition**  
 TX Power DAC : 600 code Applied  
 CH : 62  
 RBW : 100KHz  
 VBW : 100KHz  
 SPAN : 10MHz  
 REF. Level : 10dBm  
 ATT. : 20dB



3-2-5. DCS // PCS TX

**Continuous TX ON condition**  
 TX Power DAC : 520 code Applied  
 CH : 698 ch(DCS) , 650 ch(PCS)  
 RBW : 100KHz  
 VBW : 100KHz  
 SPAN : 10MHz  
 REF. Level : 10dBm  
 ATT. : 20dB

