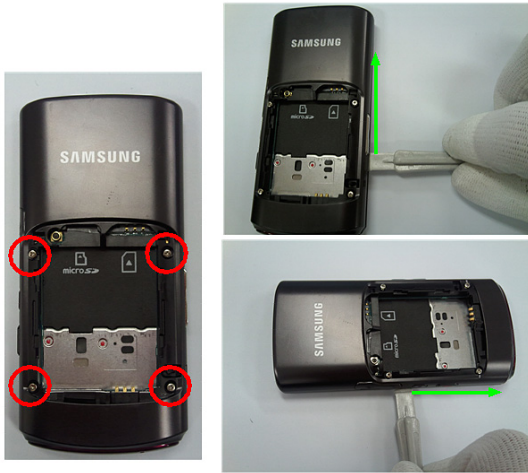


7. Disassembly and Assembly Instructions

7-1. Disassembly

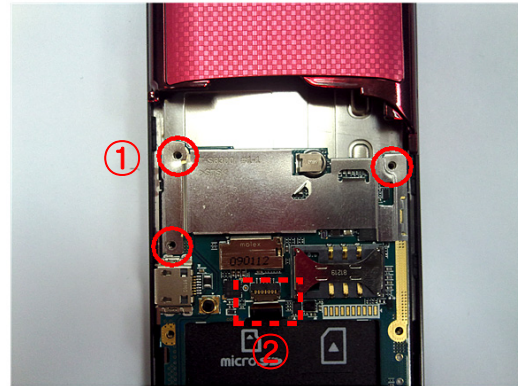
1

- 1) Unscrew the 4 points.
- 2) Separate the REAR from the FRONT ass'y



2

- 1) Unscrew the 3 points.
- 2) Disassemble the key FPCB from connector.



※ Caution

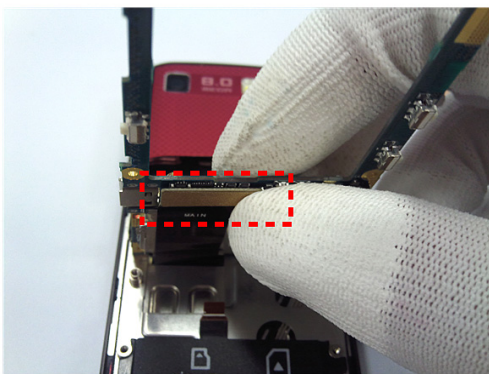
- 1) Be care of scratch and molding damage.

※ Caution

- 1) Be care of damage to KEY F-CPB.

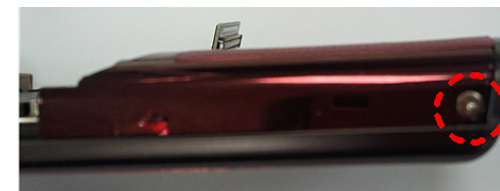
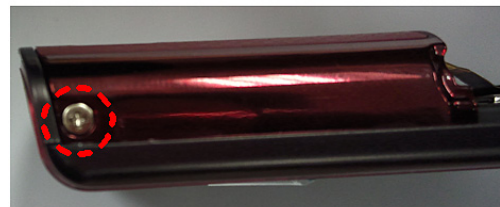
3

- 1) Disassemble the slide F-CPB with the conector.
- 2) Seprete PBA from the slide ass'y.



4

- 1) Detach Screw Cap 2EA
- 2) Unscrew the 2 points.



※ Caution

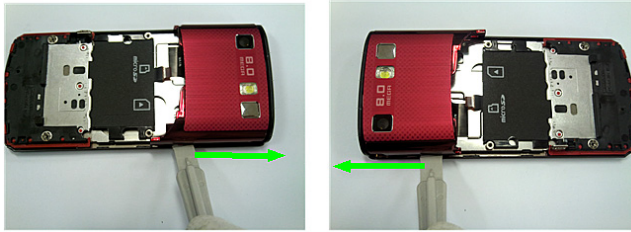
- 1) Be care of damage to slide F-CPB

※ Caution

- 1) Be care of scratch and molding damage.

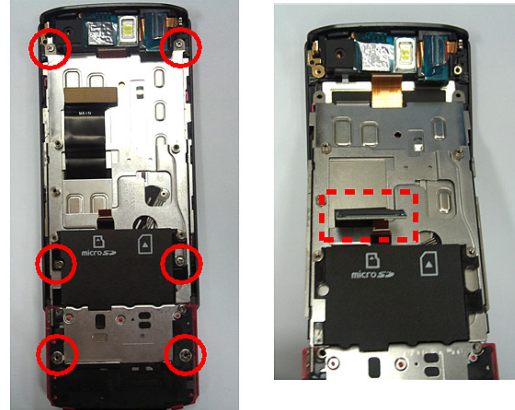
5

1) Separate the BACK COVER from the slide ass'y



6

1) Unscrew the 6 points.
2) Separate the LOWER case from the UPPER case.



※ Caution

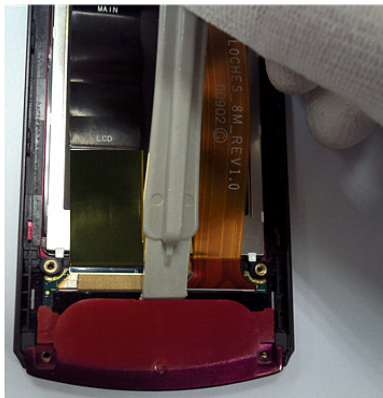
1) Be care of scratch and molding damage.

※ Caution

1) Be care of scratch and molding damage.
2) Be care of damage to slide F-CPB.

7

1) Disassemble the Upper Deco from the Upper.



8

1) Remove Black tape.
2) Disassemble the slide F-PCB from the sub PCB.



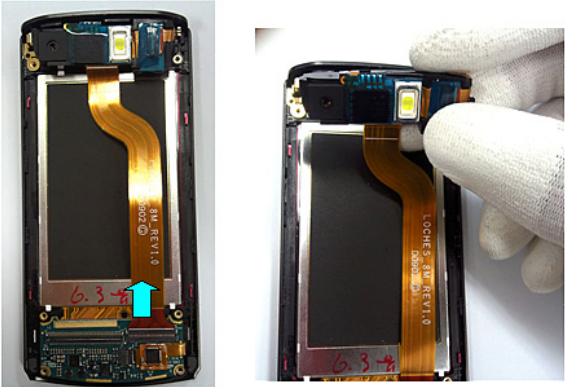
※ Caution

1) Be care of scratch and molding damage.
2) Be care of damage to the slide F-CPB.
3) Be care of damage to the connector.

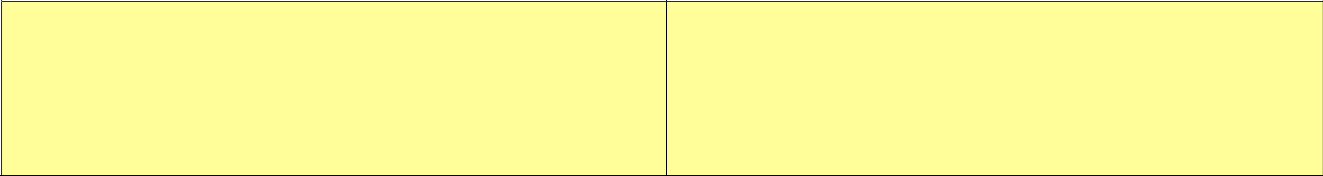
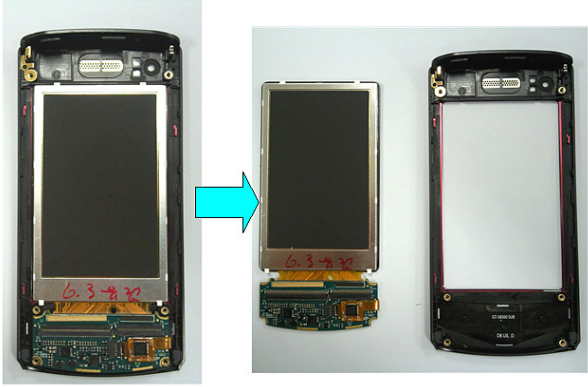
※ Caution

1) Be care of damage to Slide F-PCB.

9
1) Disassemble the Camera Module F-PCB
2) Sperate the LCD module from the UPPER case.



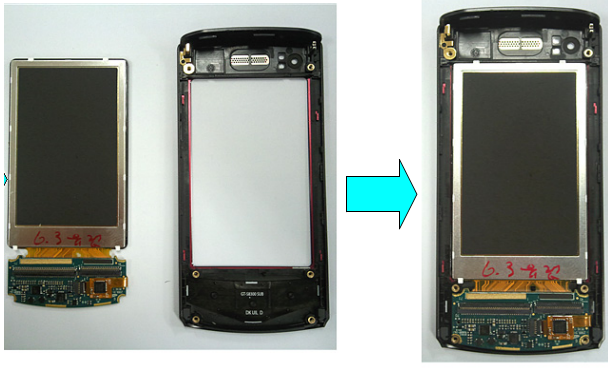
10
1)Disassemble the LCD module on the UPPER case.



7-2. Assembly

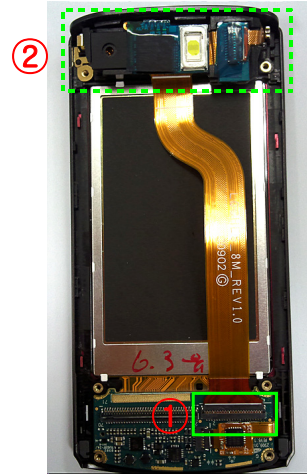
1

1) Assemble the LCD module on the UPPER case



2

1) Assemble the Camera Module F-PCB
2) Place the LCD module



※ Caution

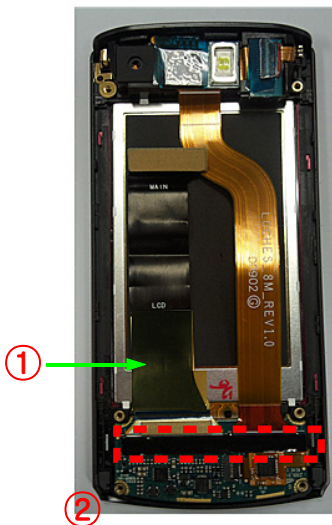
1) Be care of scratch to main WINDOW.

※ Caution

1) Be care of damage to Camera F-PCB.

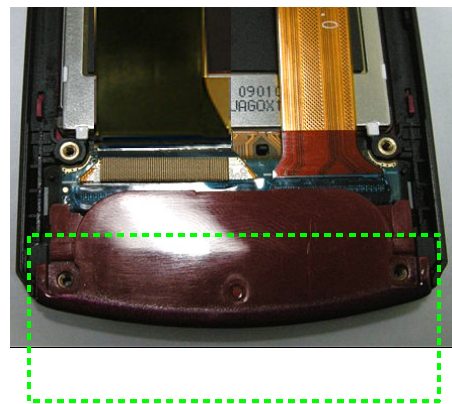
3

1) Assemble the side F-PCB to the sub PCB.
2) Attach Black tape.



4

1) Assemble the Upper Deco to the Upper



※ Caution

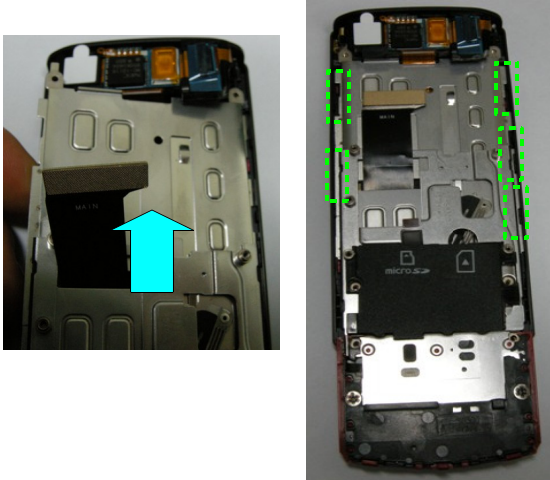
1) Be care of damage to Slide F-PCB.

※ Caution

1) Be care of scratch and molding damage.
2) Be care of damage to the slide F-CPB.
3) Be care of damage to the connector.

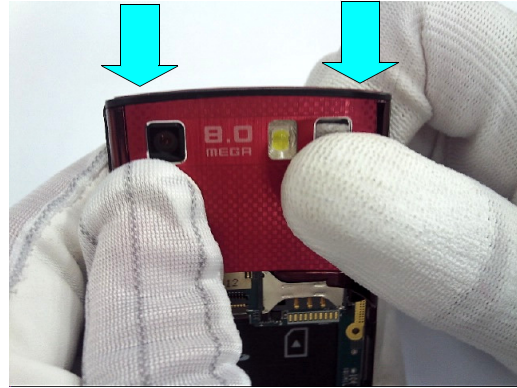
5

- 1) Pass FPCB to LCD FPCB hole
- 2) Assemble HOOK of SIDE surface depending on LOWER top.



6

- 1) Assemble the BACK COVER to the slide ass'y



※ Caution

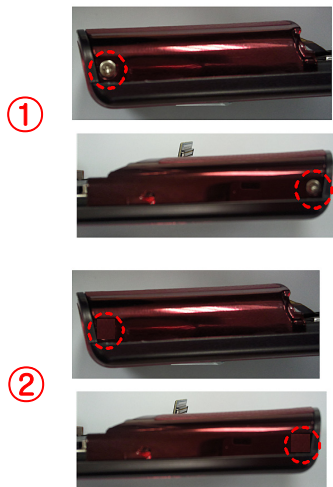
- 1) Be care of scratch and molding damage.
- 2) Be care of damage to slide F-CPB.

※ Caution

- 1) Be care of scratch and molding damage.

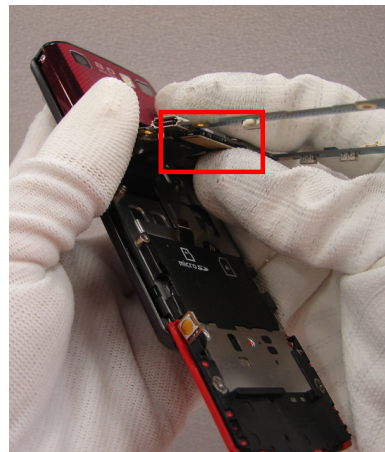
7

- 1) Screw the 2 points.
- 2) Attach Screw Cap.



8

- 1) Connect the slide F-PCB & PBA ass'y.



※ Caution

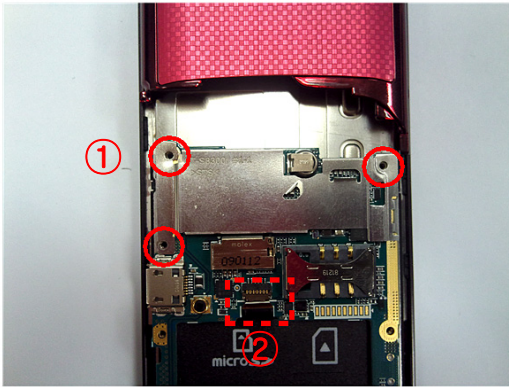
- 1) Be care of scratch and molding damage.

※ Caution

- 1) Be care of damage to slide F-CPB

9

- 1) Place the PBA ass'y on the FRONT case stably, Screw the 4 points.
- 2) Assemble the KEY F-CPB with the conenctor.



10

- 1) Assemble the REAR to the FRONT ass'y
- 2) Screw the 4 points.



※ Caution

- 1) Be care of damage to KEY F-CPB.

※ Caution

- 1) Be care of scratch and molding damage.