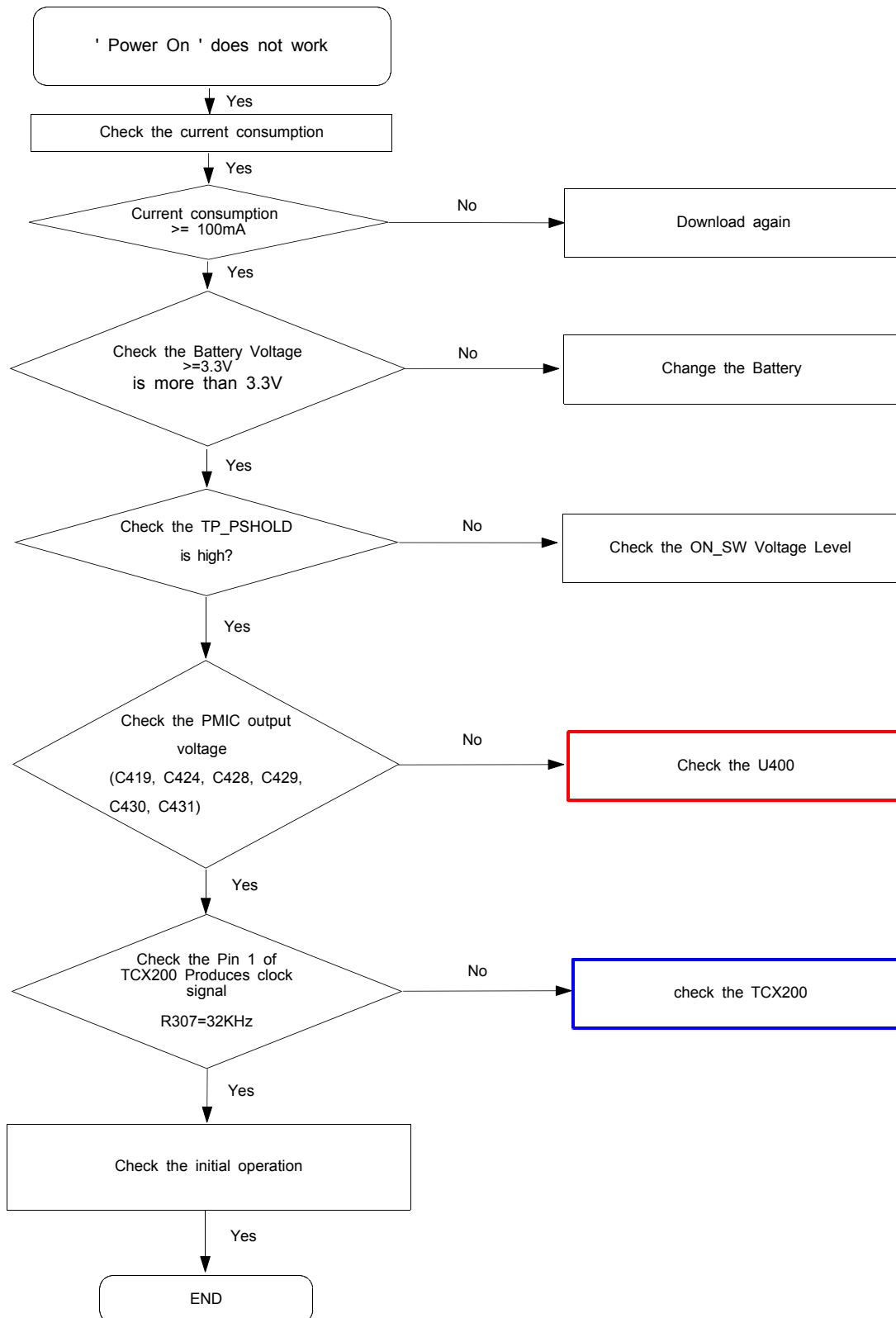
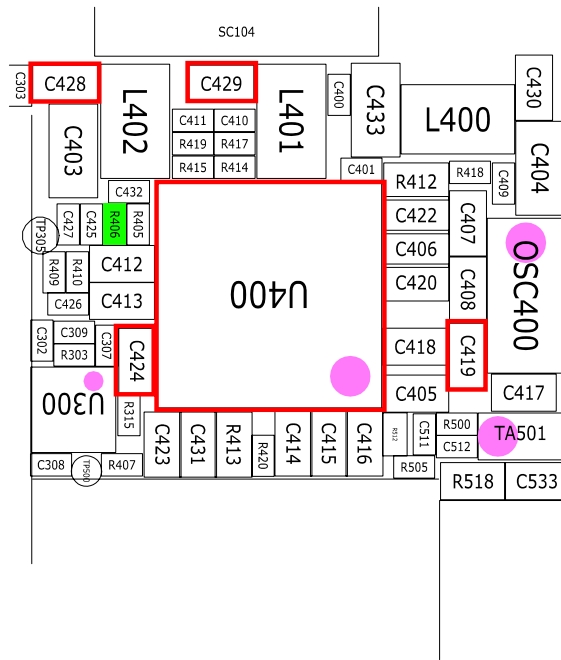
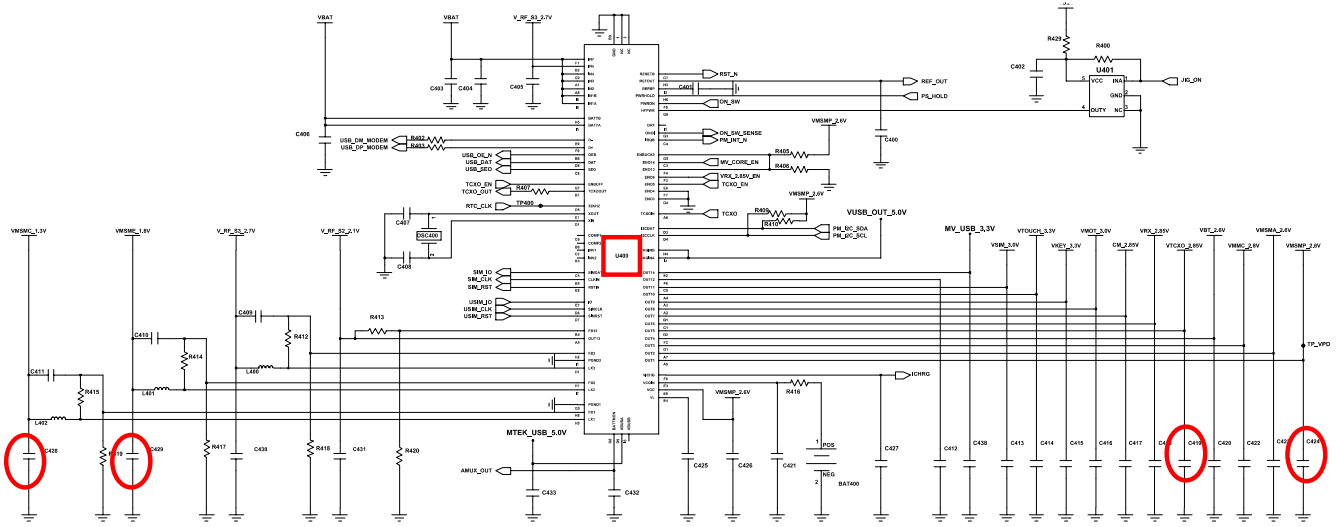


10. Flow Chart of Troubleshooting

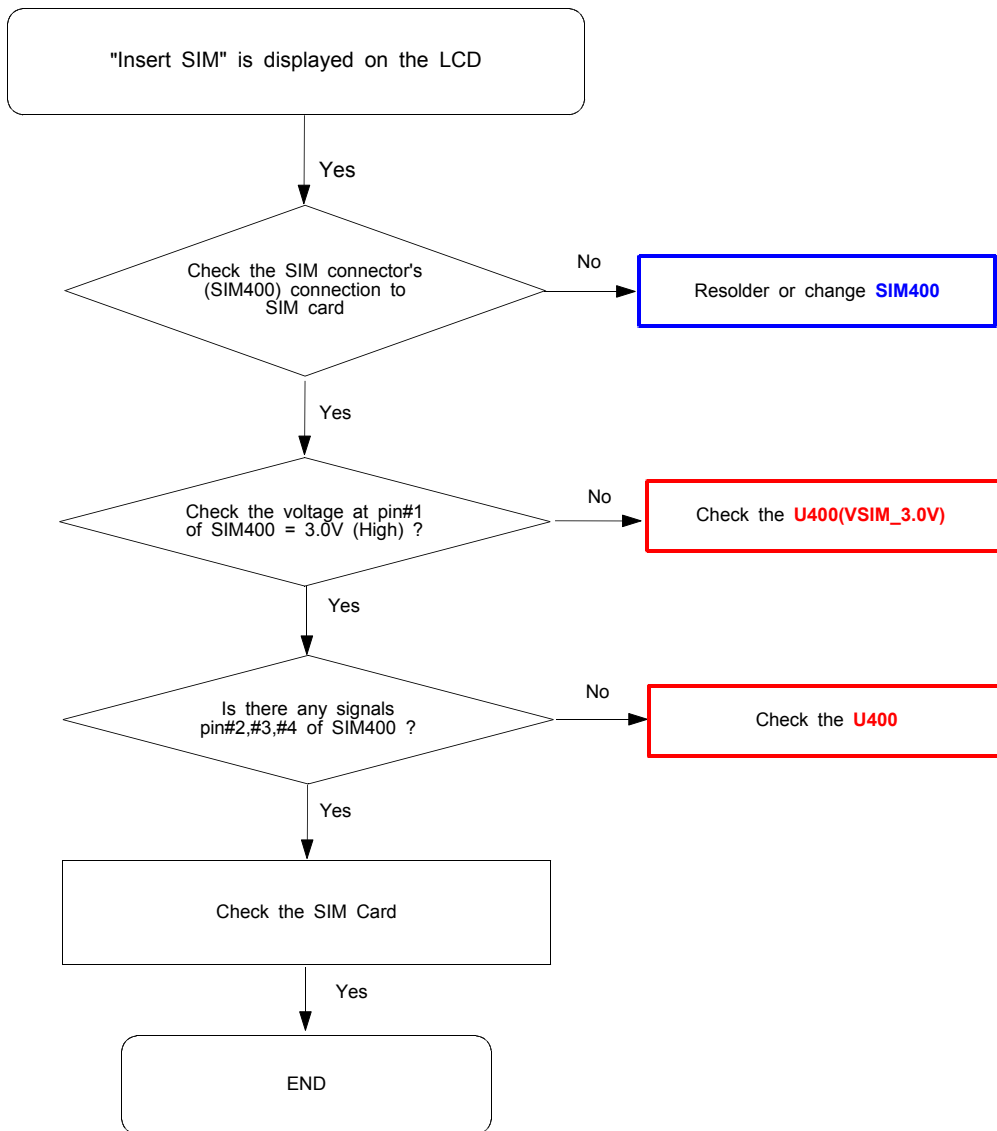
10-1. Power On



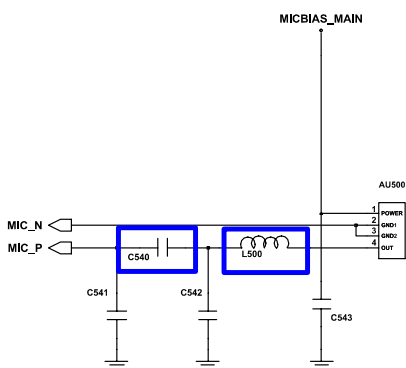
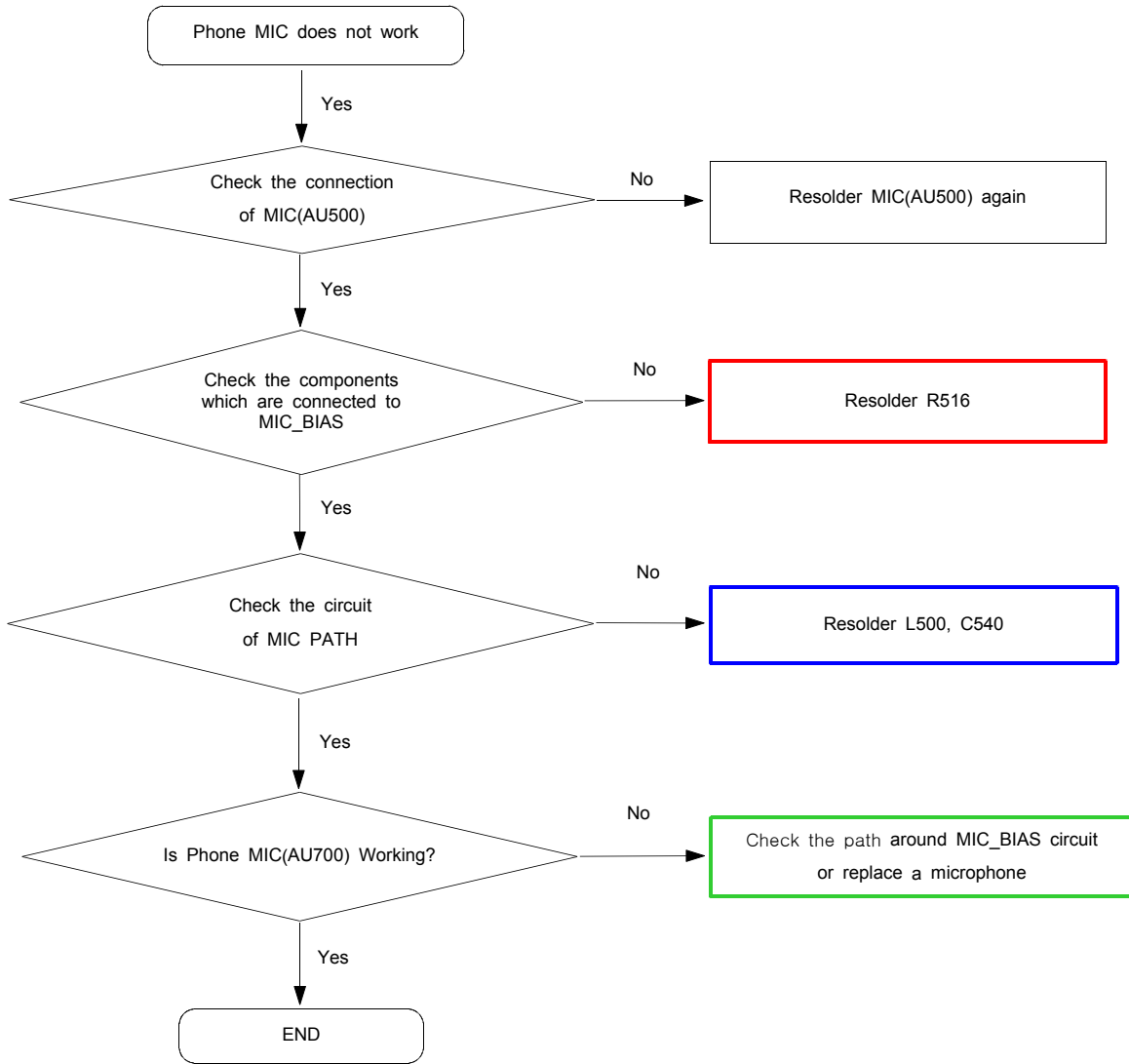
Flow Chart of Troubleshooting



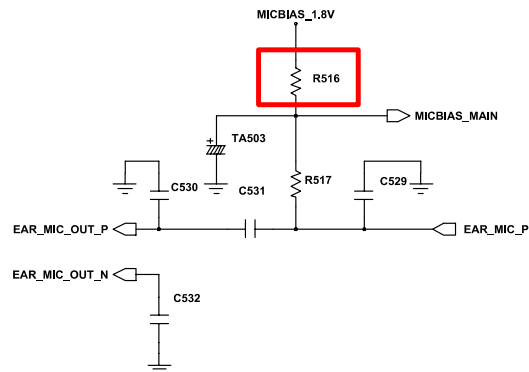
10-2. Sim Part



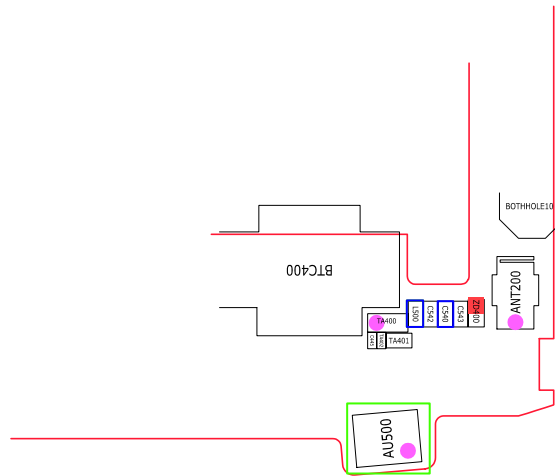
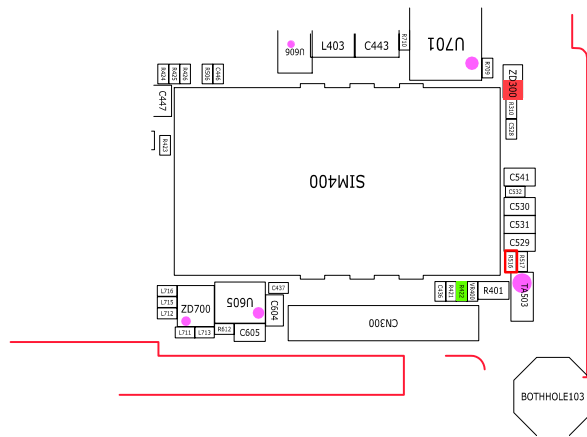
10-3. Microphone Part - Phone MIC



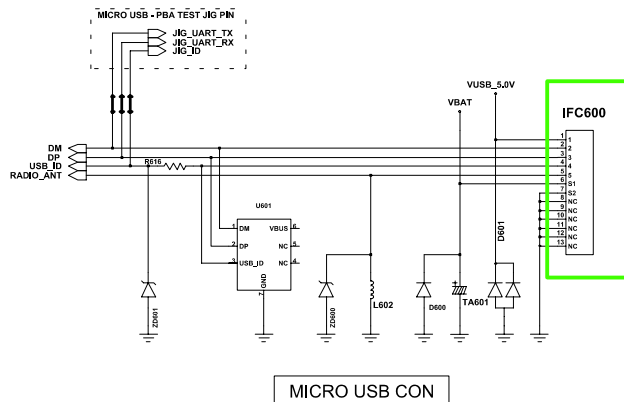
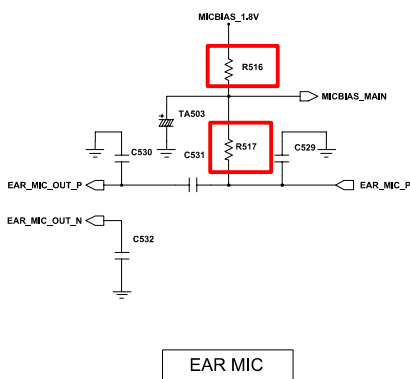
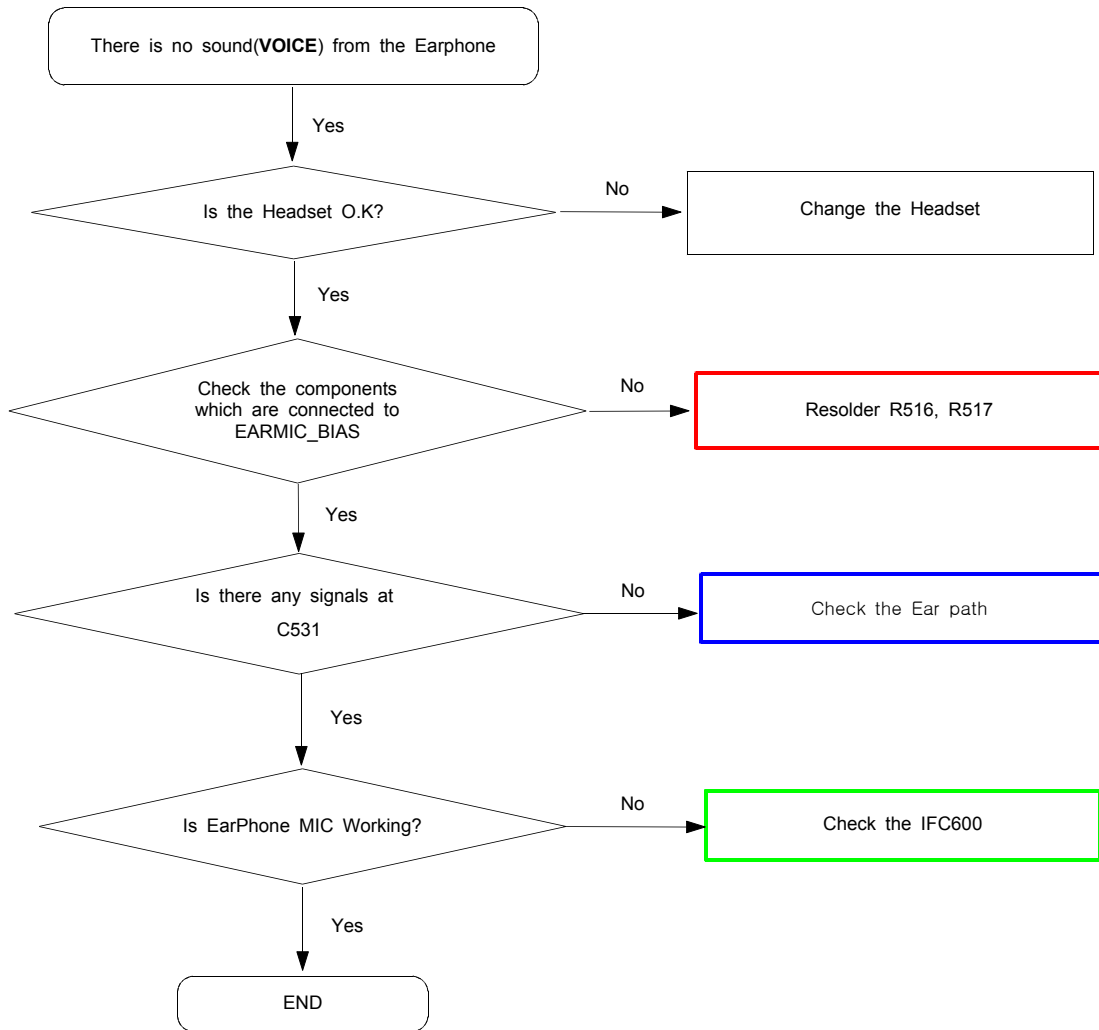
MAIN MIC

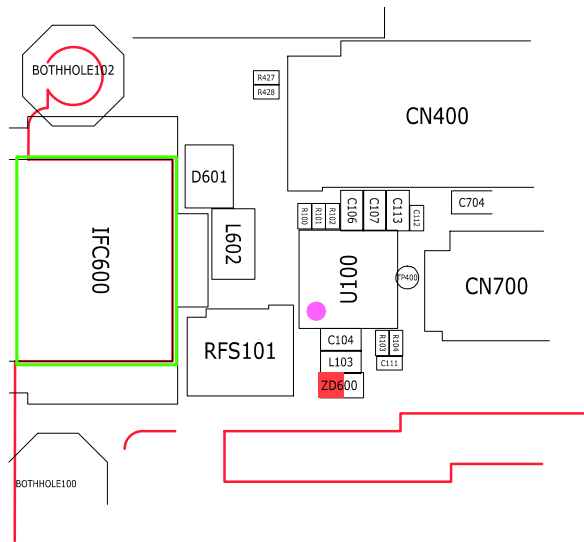
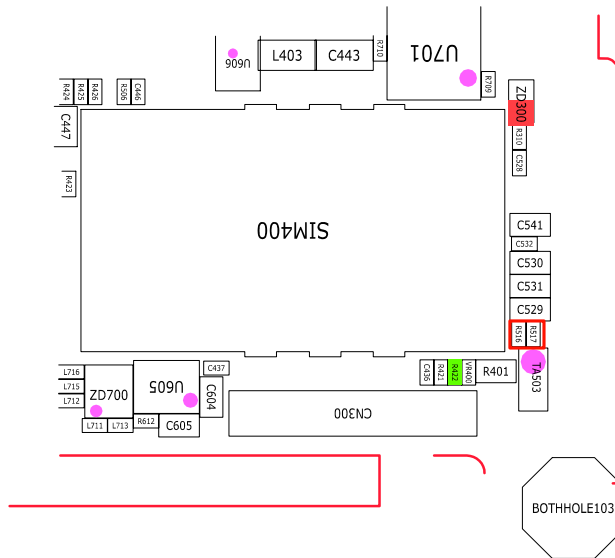


EAR MIC

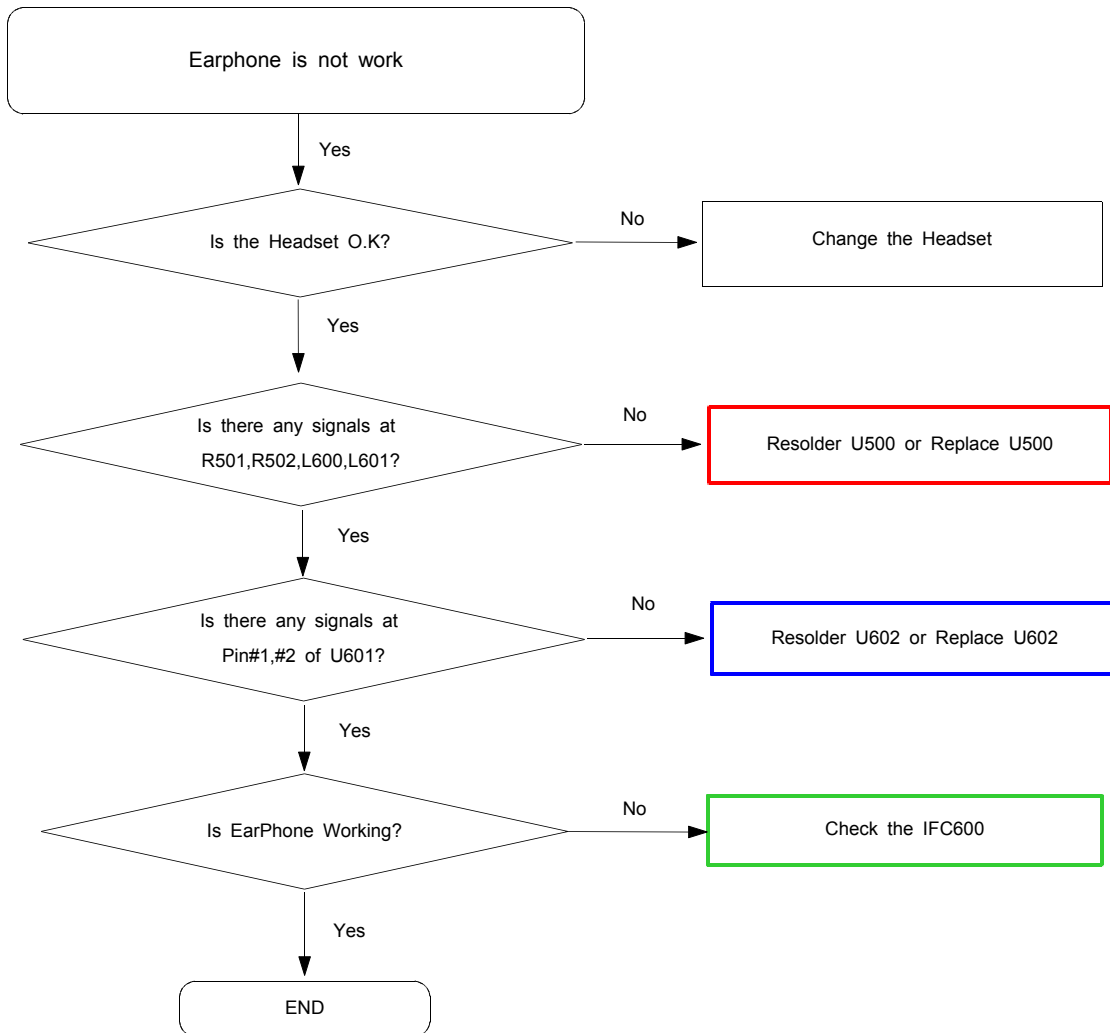


10-4. Microphone Part - Earphone MIC

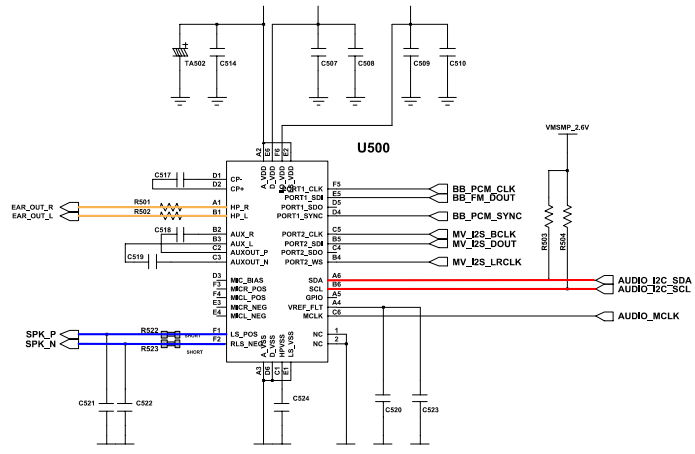




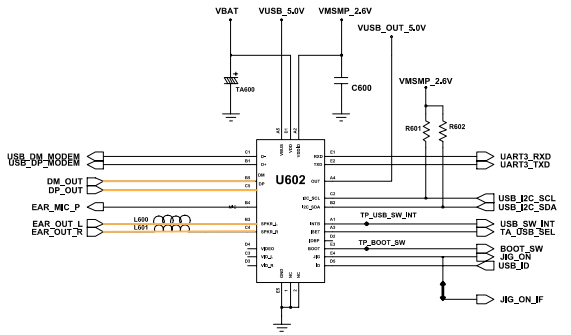
10-5. Earphone Part



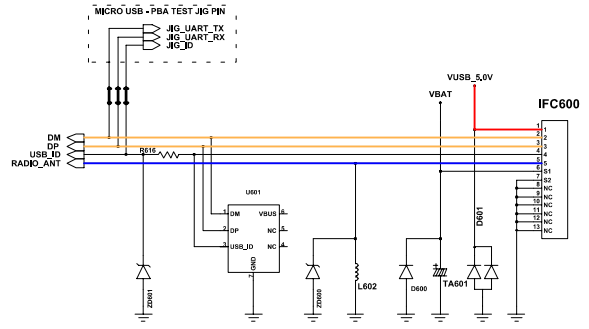
Flow Chart of Troubleshooting



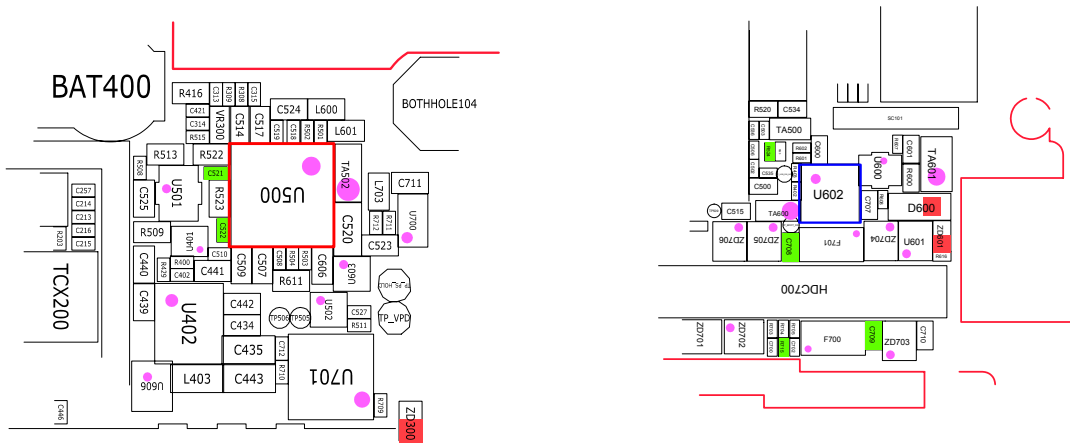
AUDIO AMP



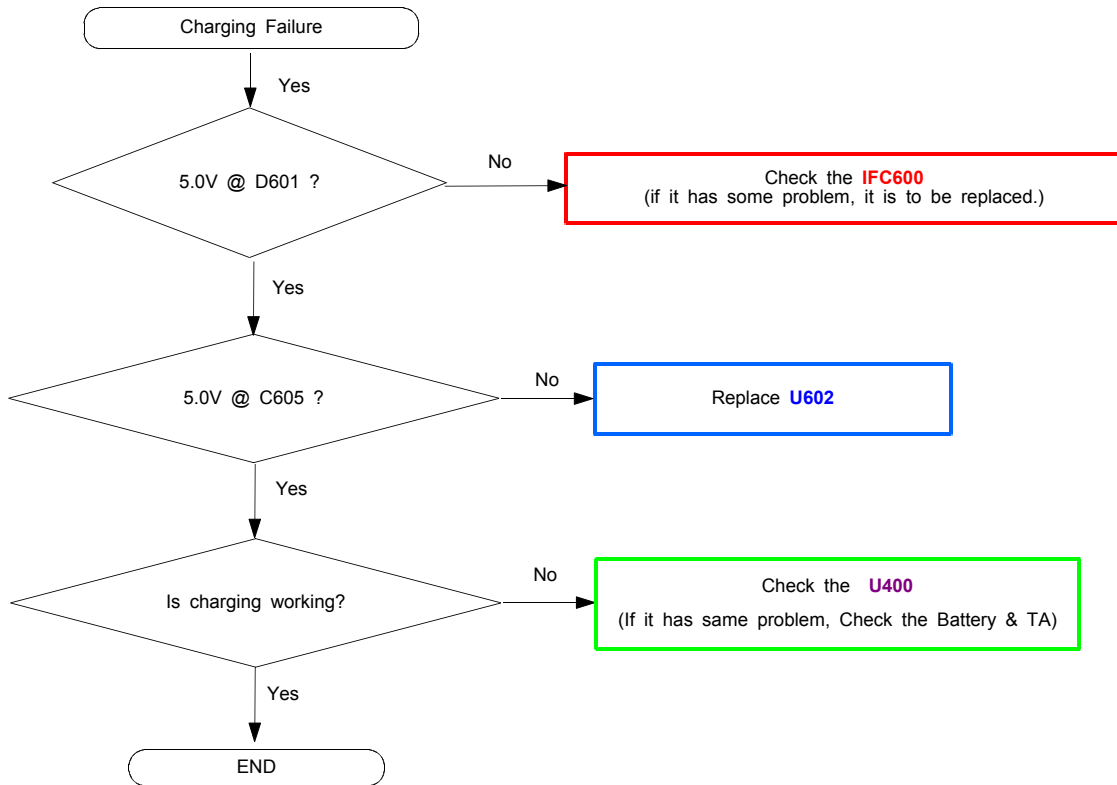
USB SWITCH IC



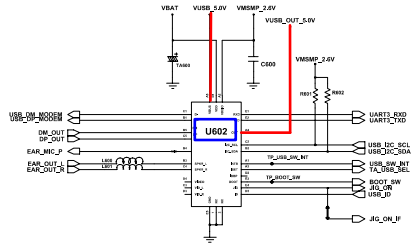
MICRO USB CON



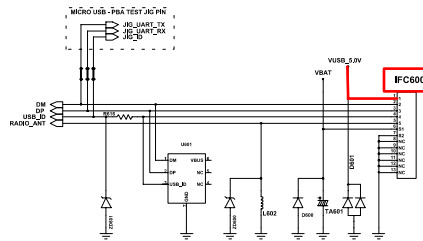
10-6. Charging Part



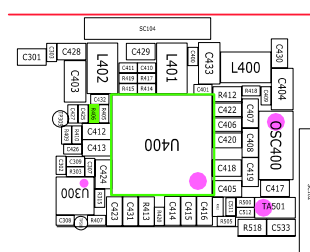
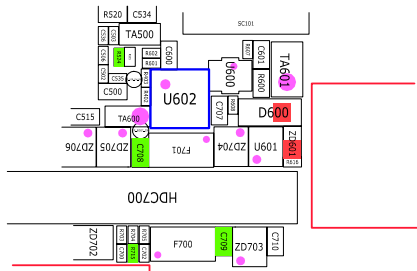
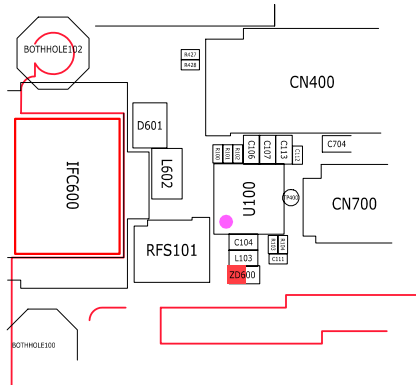
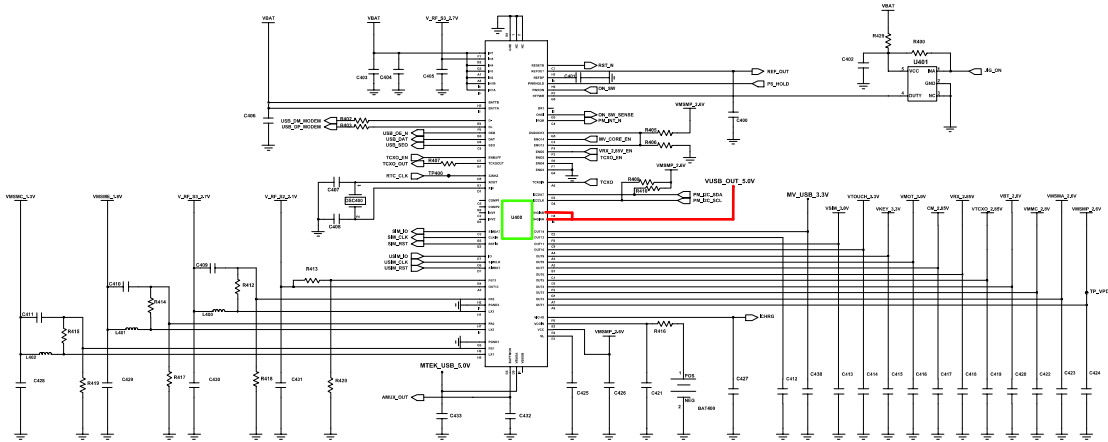
Flow Chart of Troubleshooting



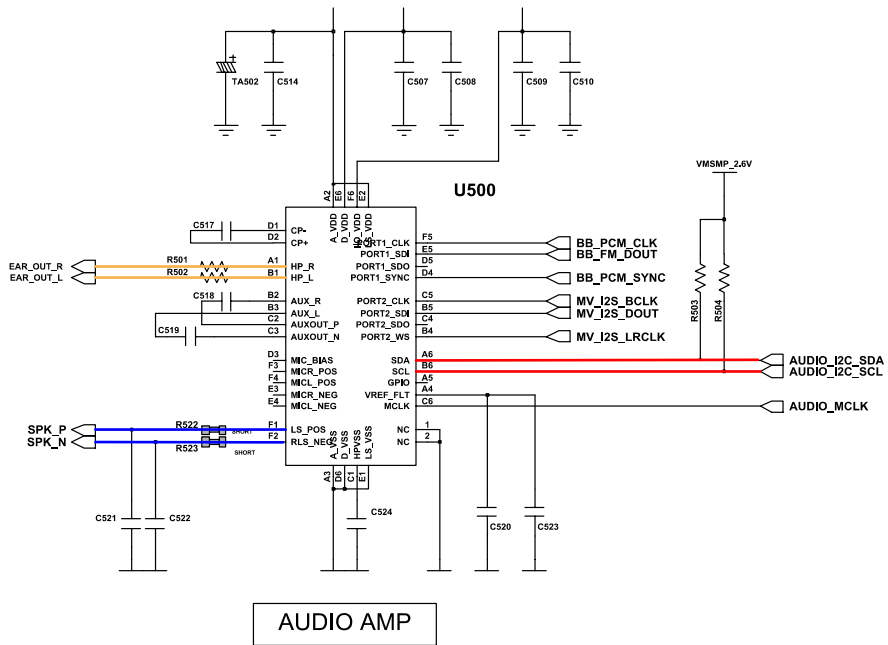
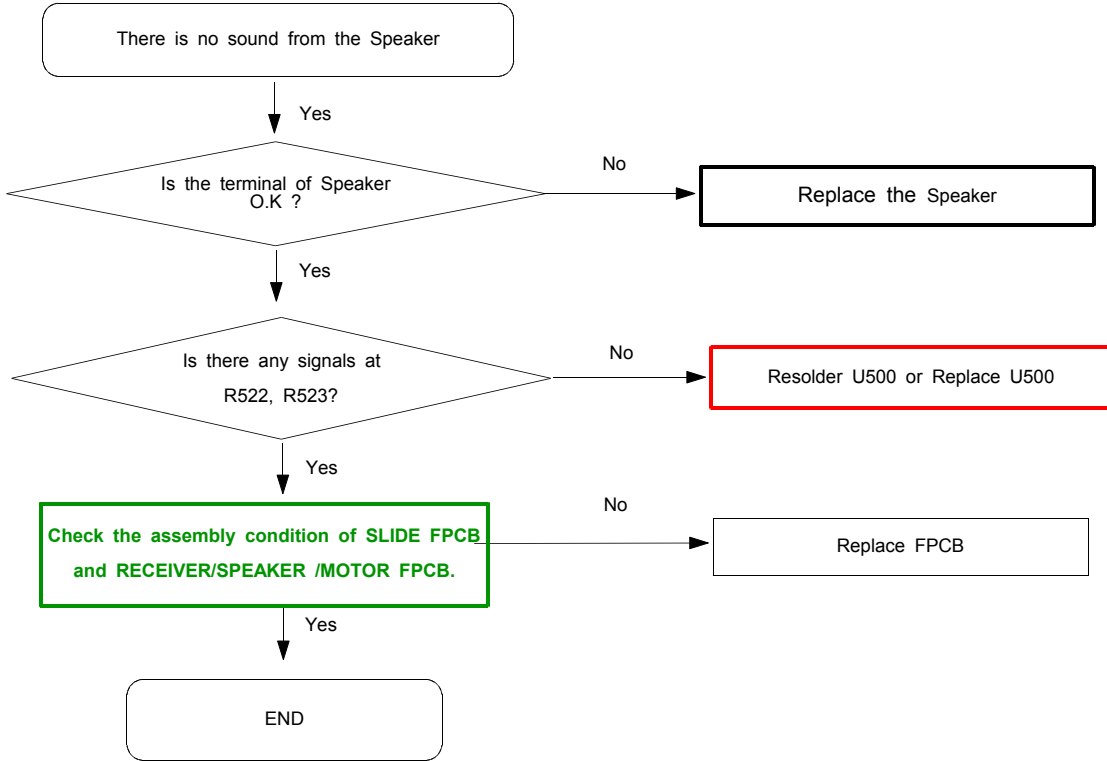
USB SWITCH IC



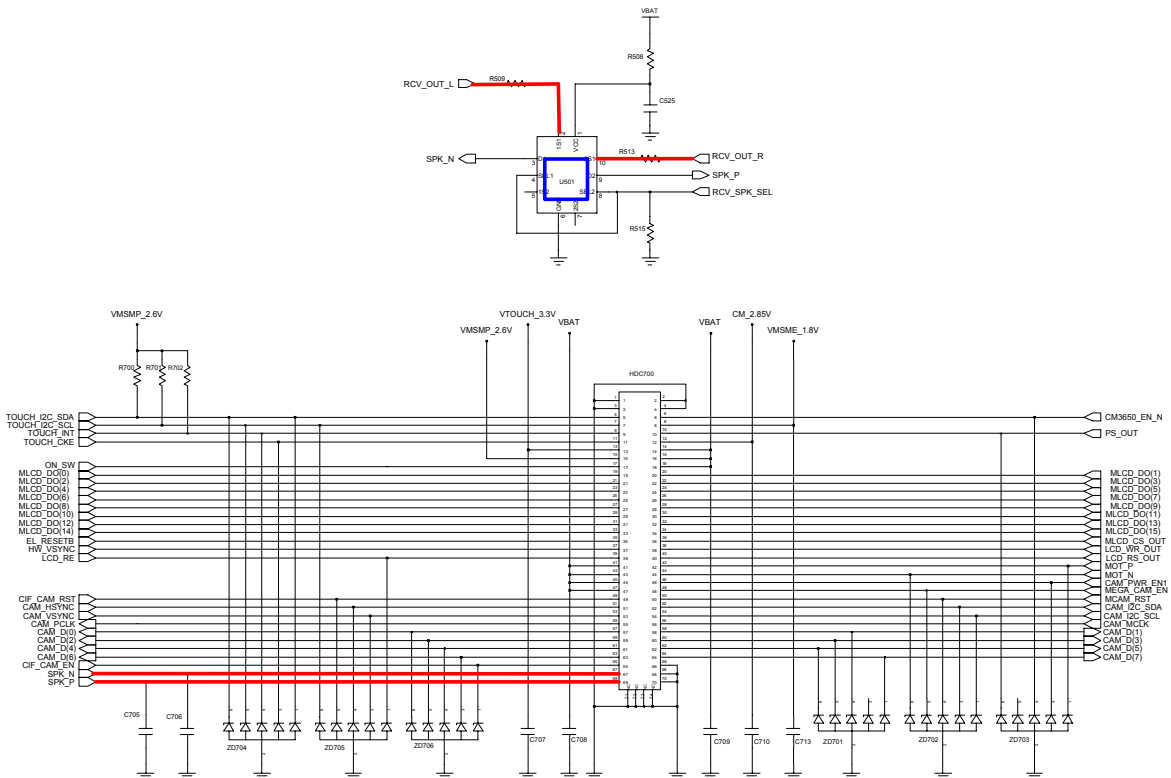
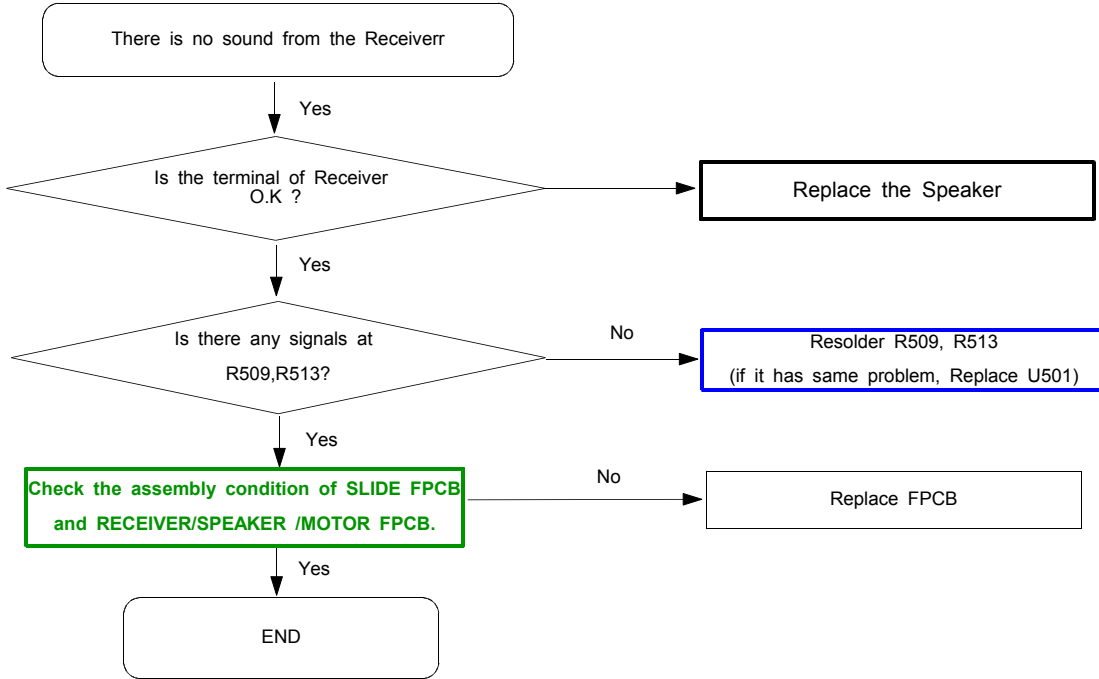
MICRO USB CON



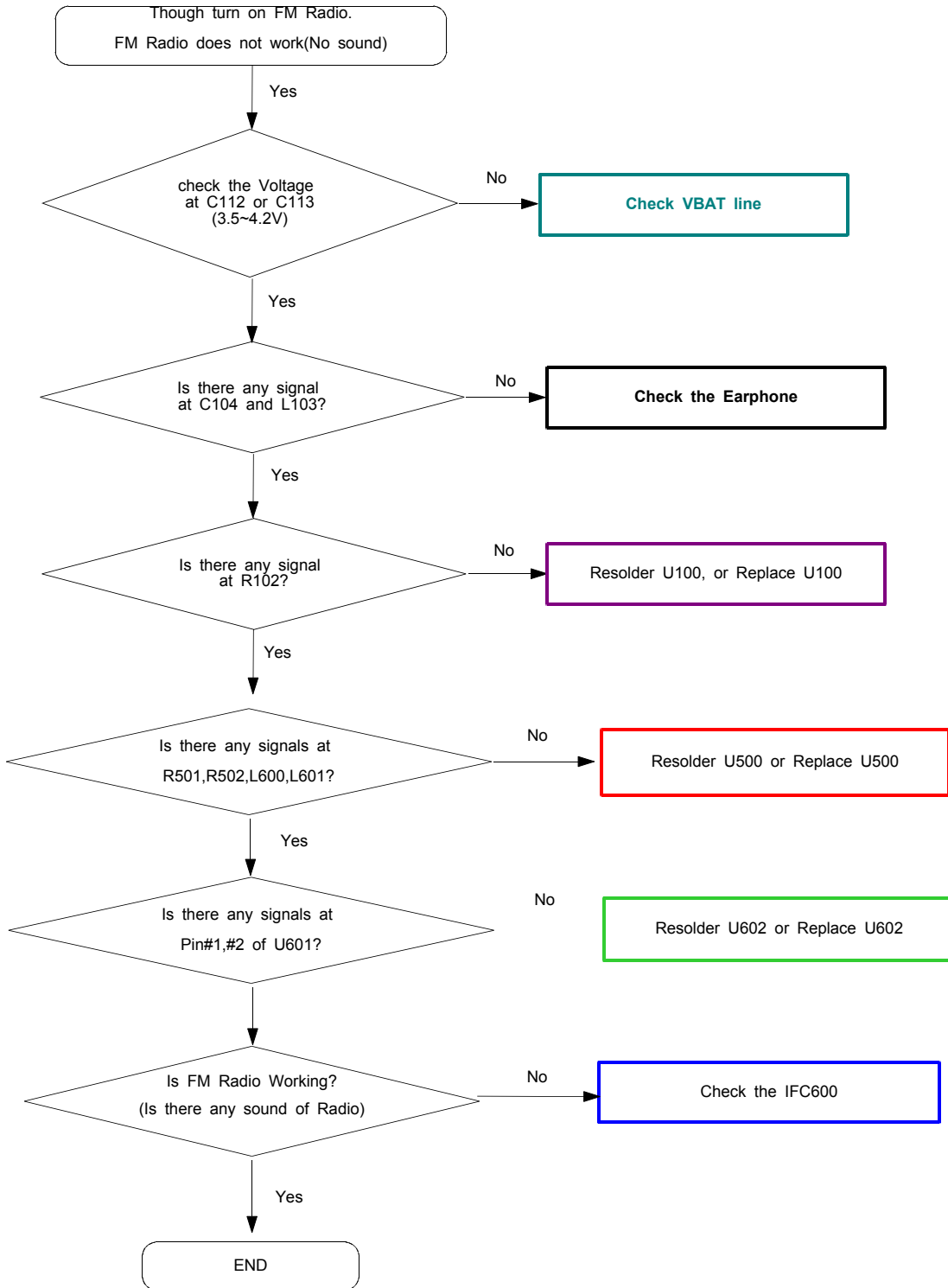
10-7. Speaker Part



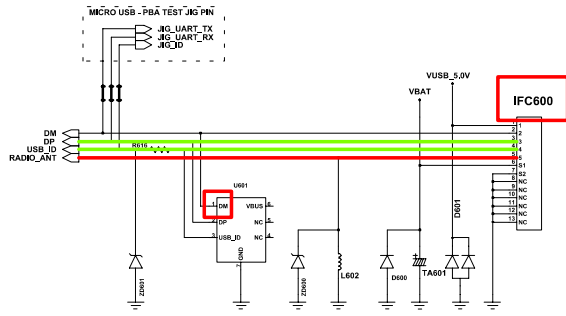
10-8. Receiver Part



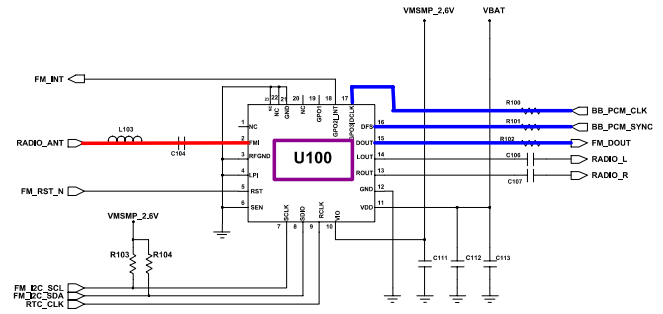
10-9. FM Radio Part



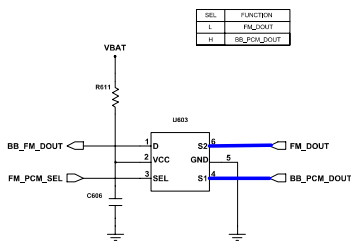
Flow Chart of Troubleshooting



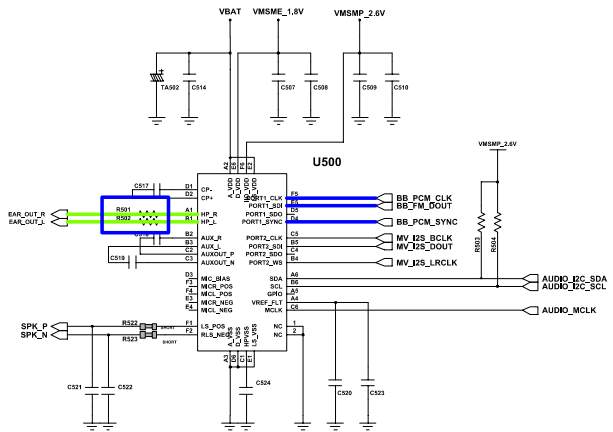
MICRO USB CON



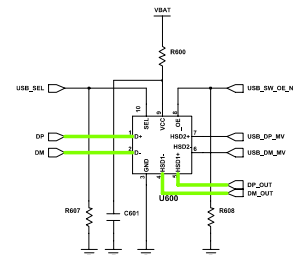
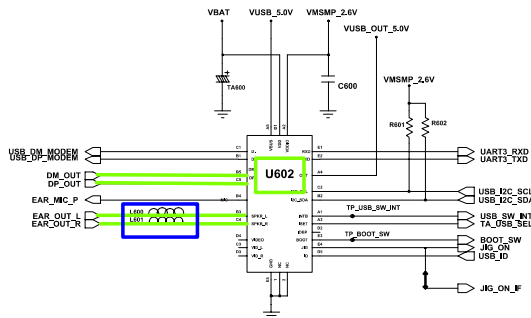
FM RADIO



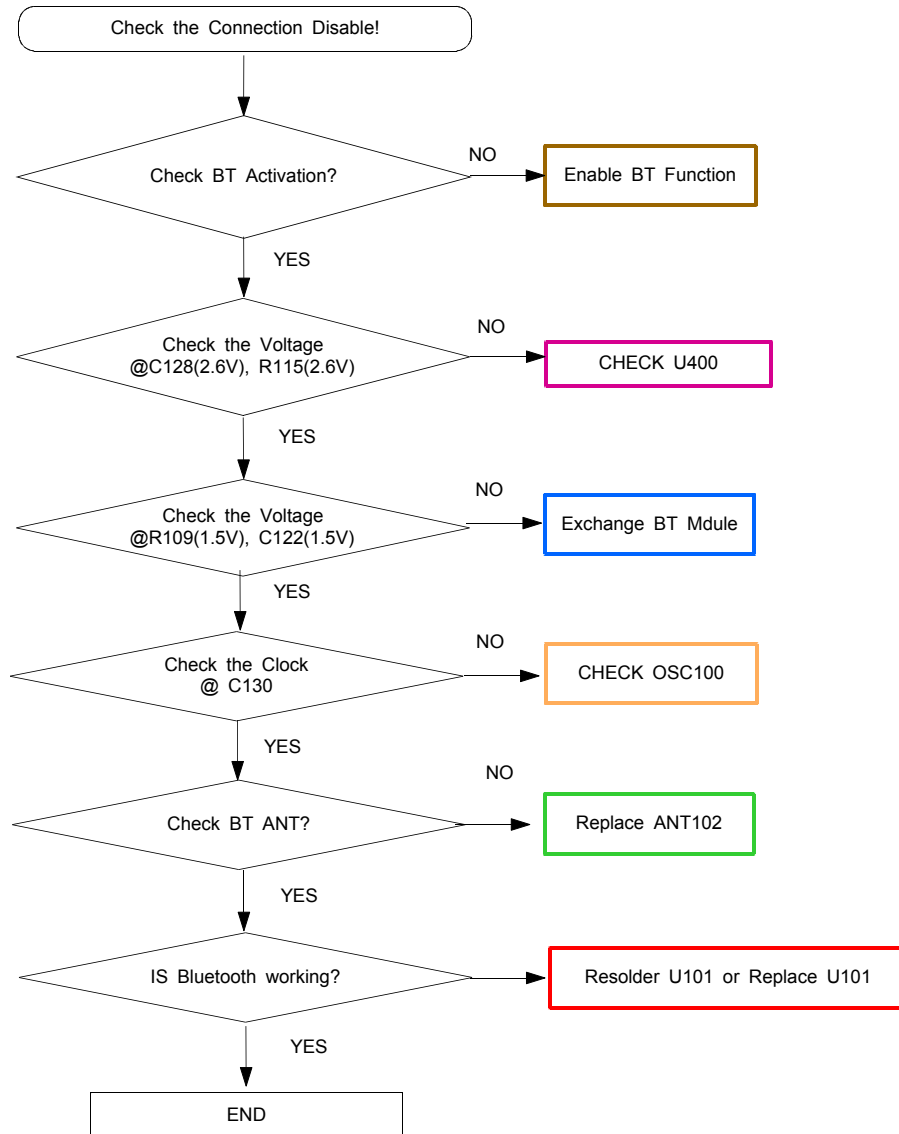
FM RADIO S/W

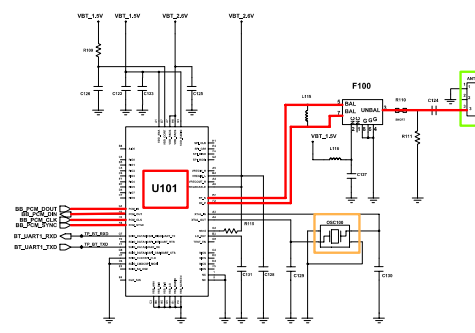
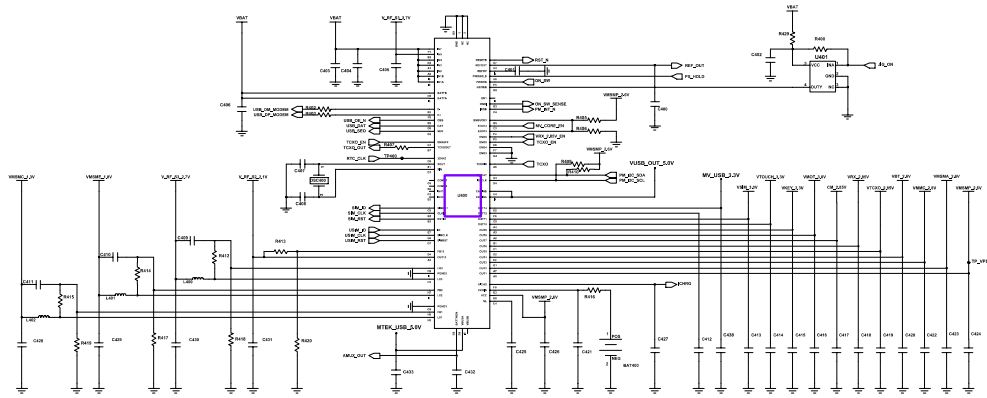


AUDIO AMP

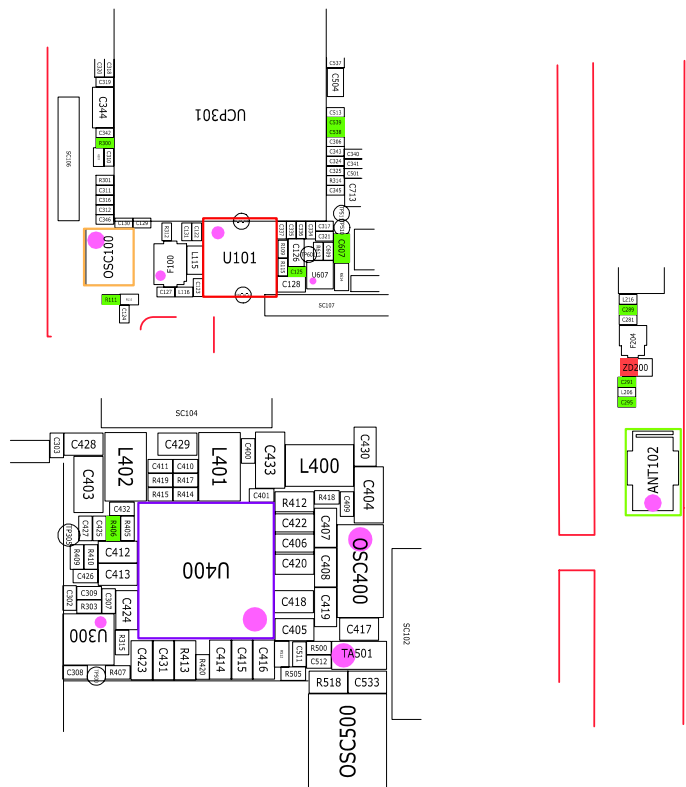


10-10. Bluetooth Part

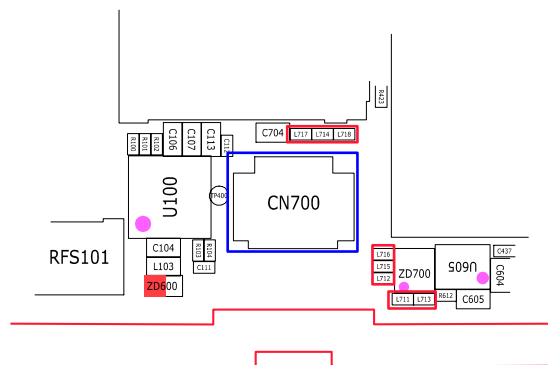
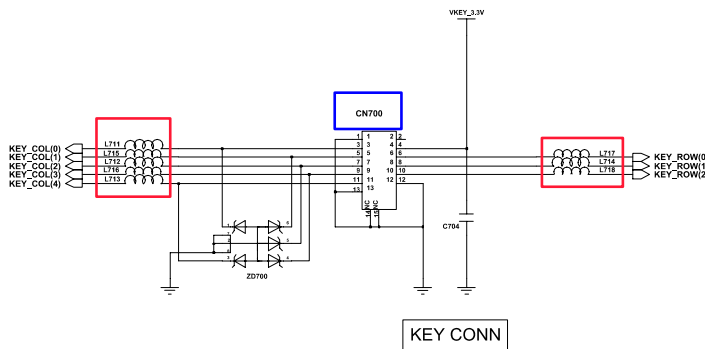
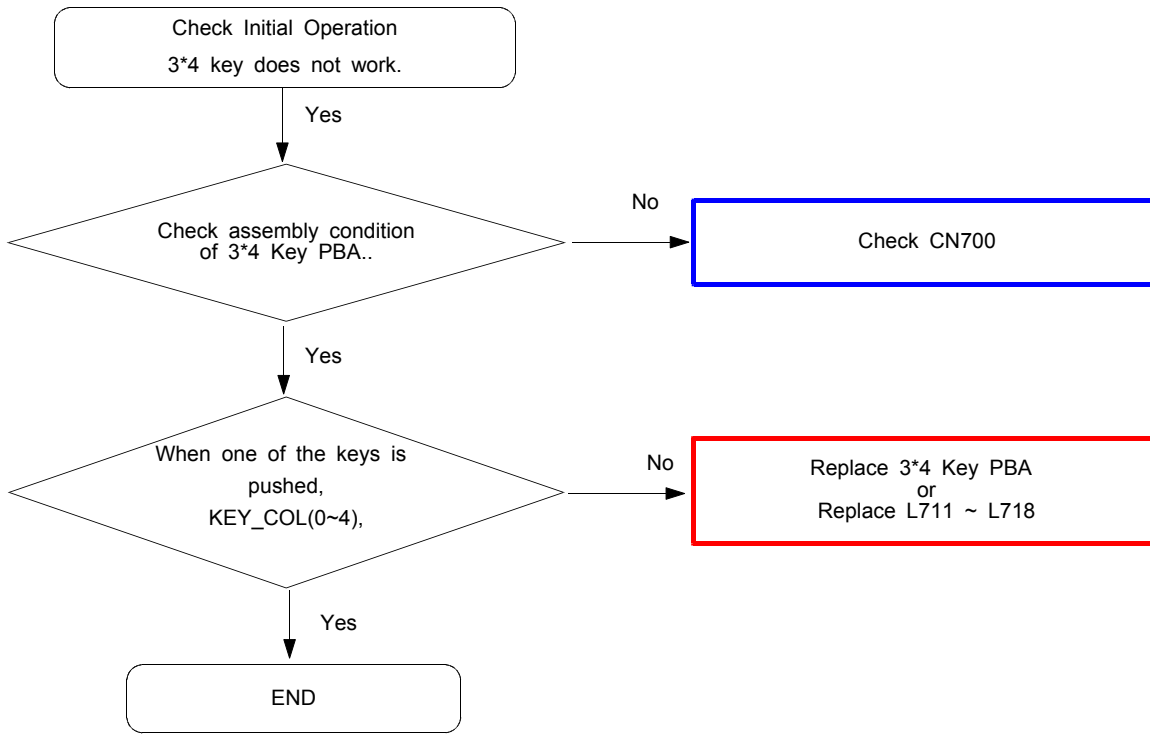




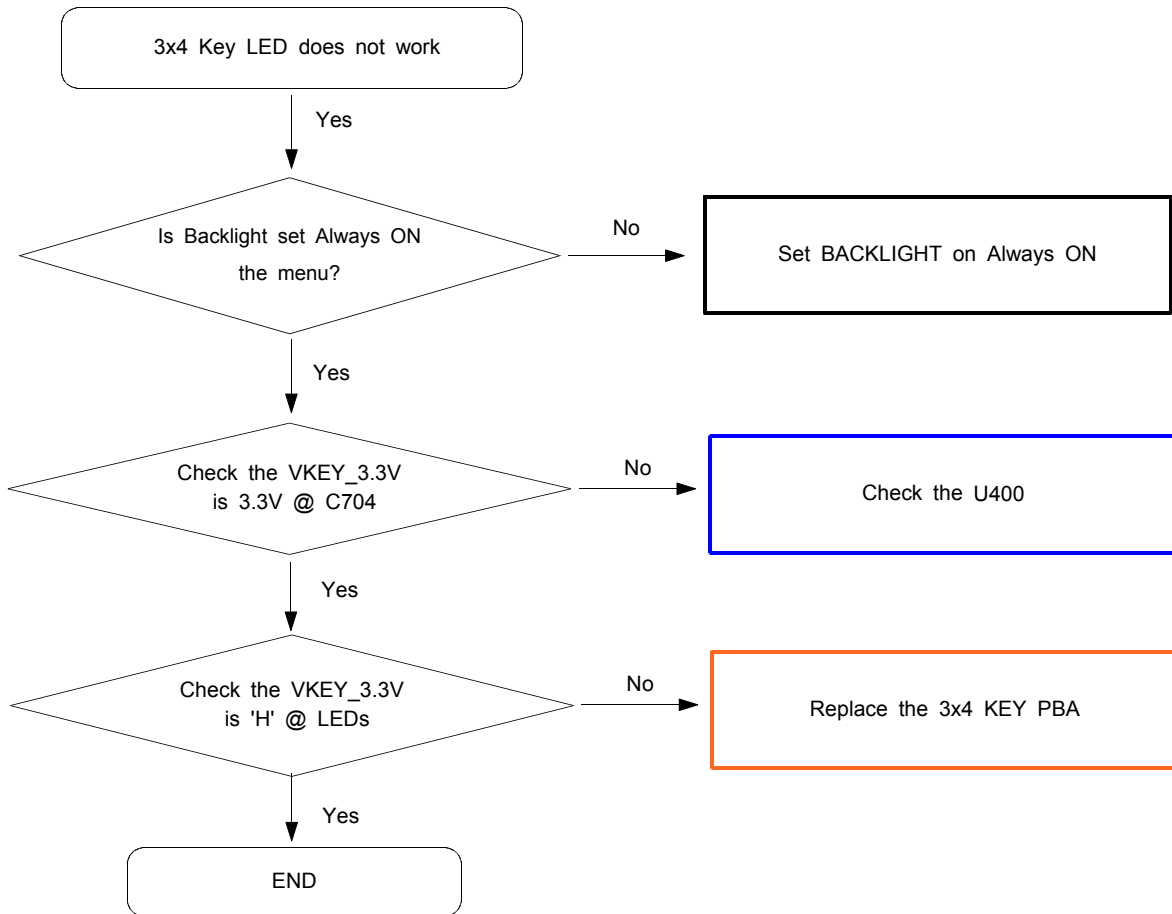
Bluetooth

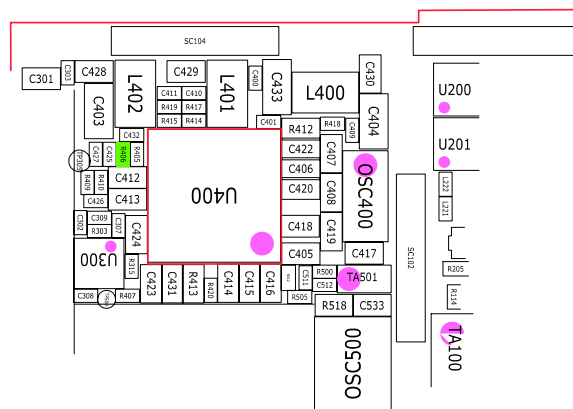
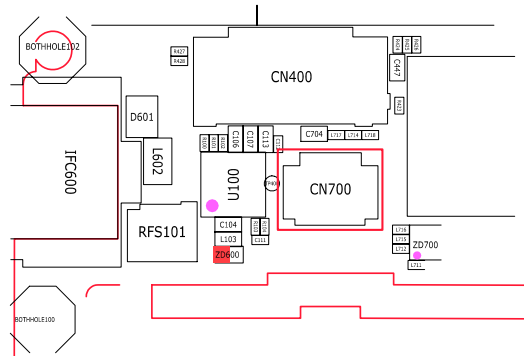
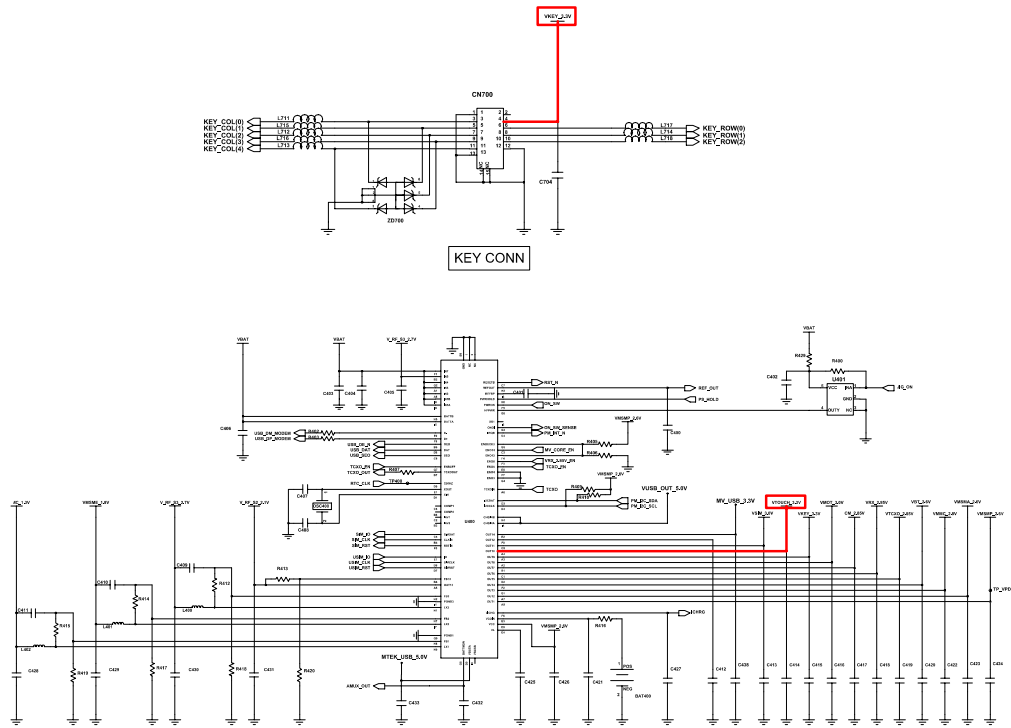


10-11. 3*4 Key PBA

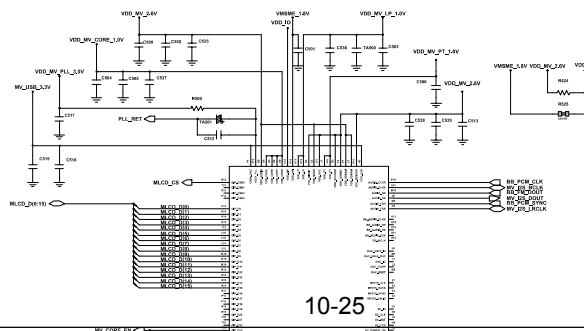
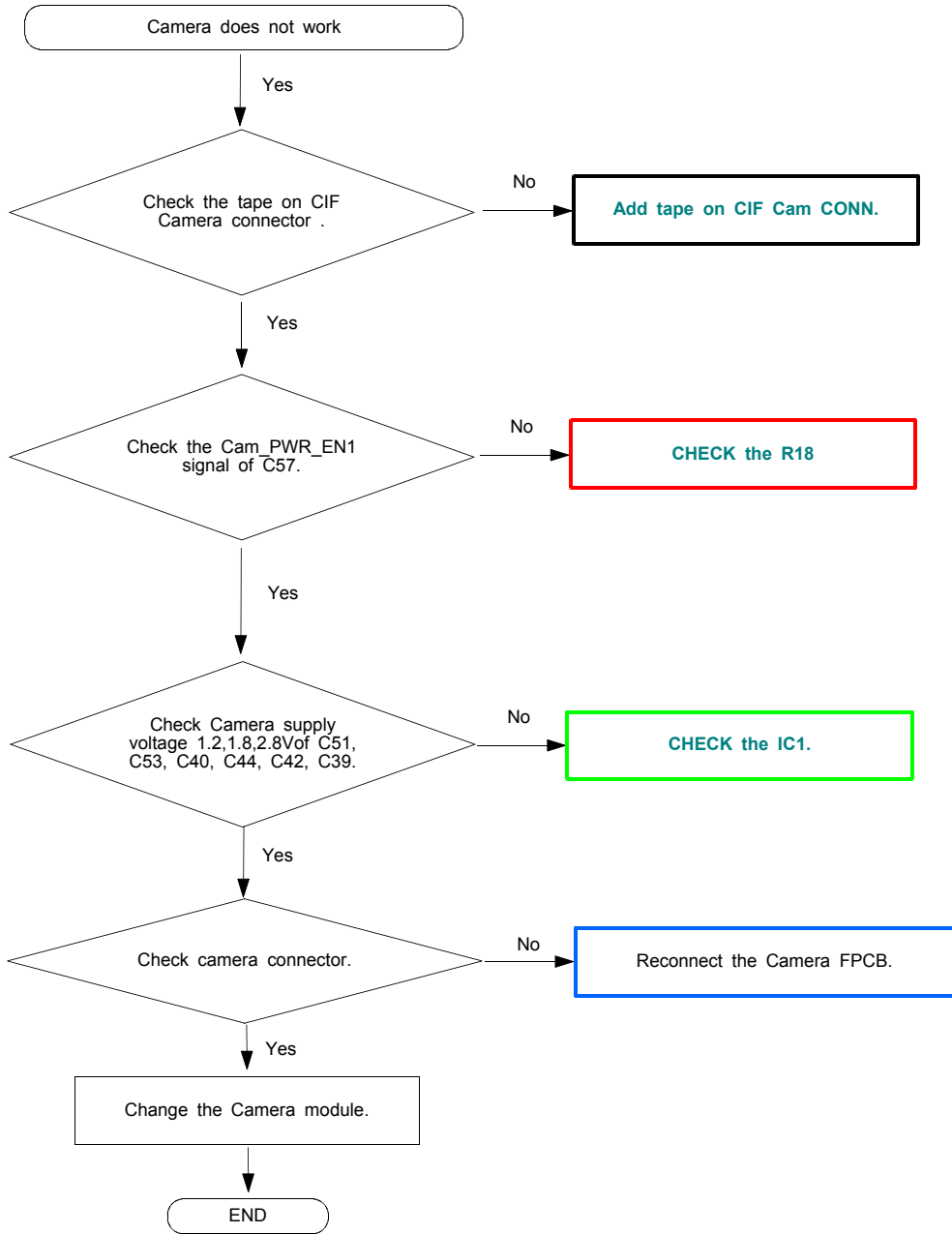


10-11-1. 3*4 Key Back Light

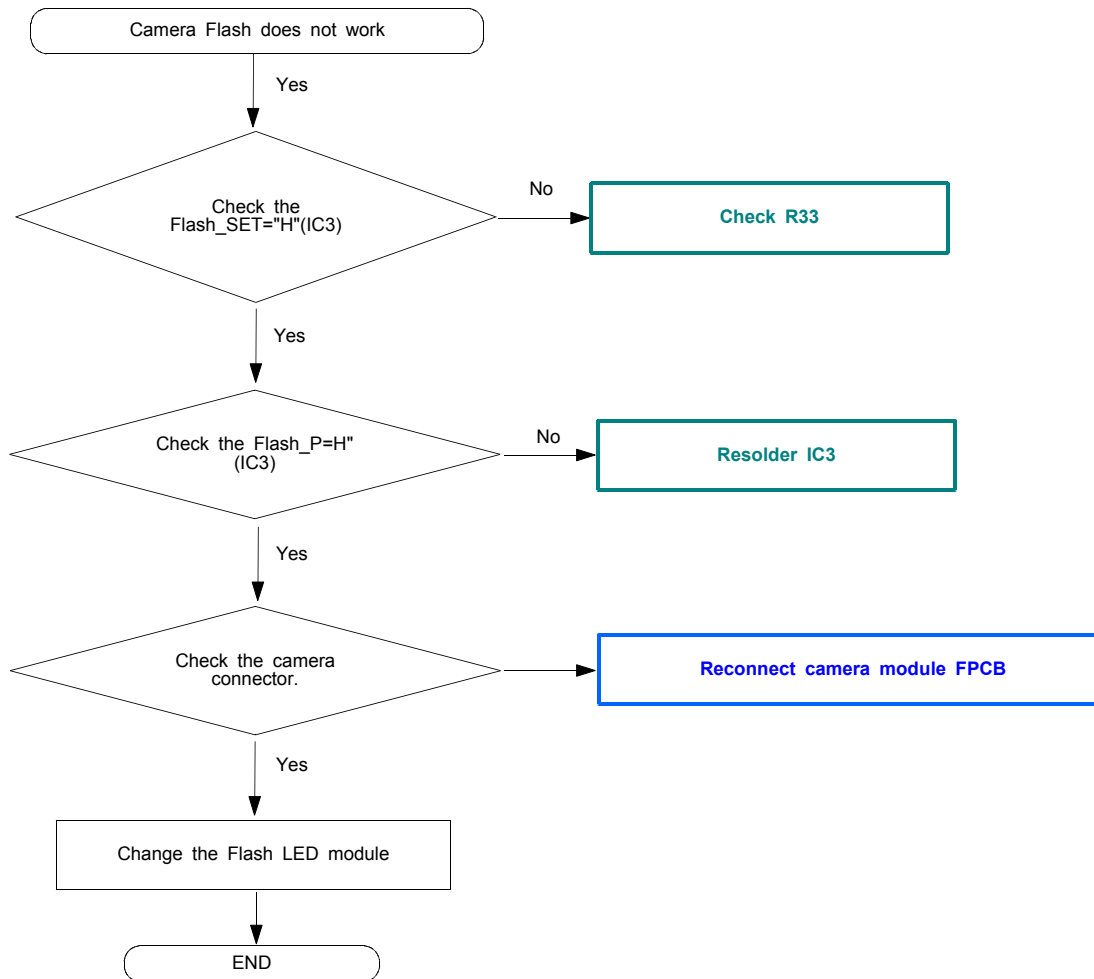


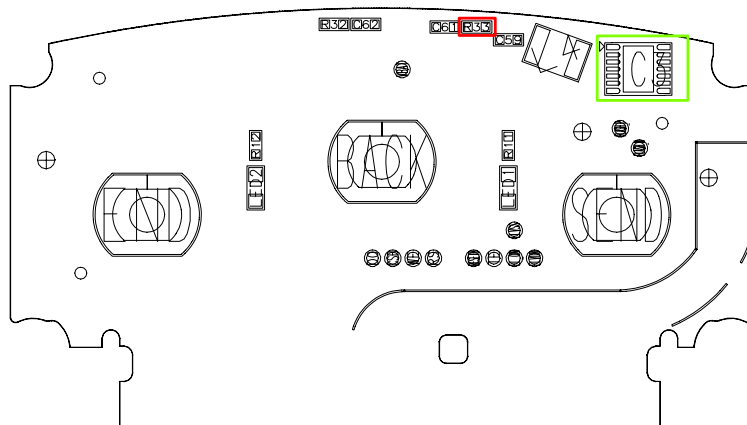
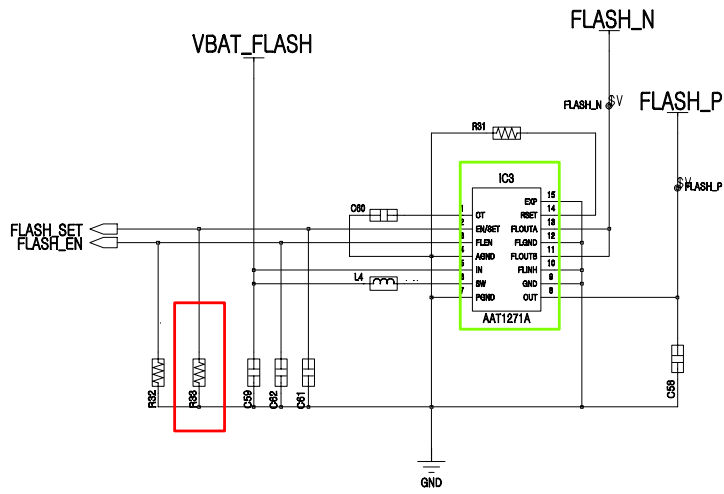


10-12-1. Camera

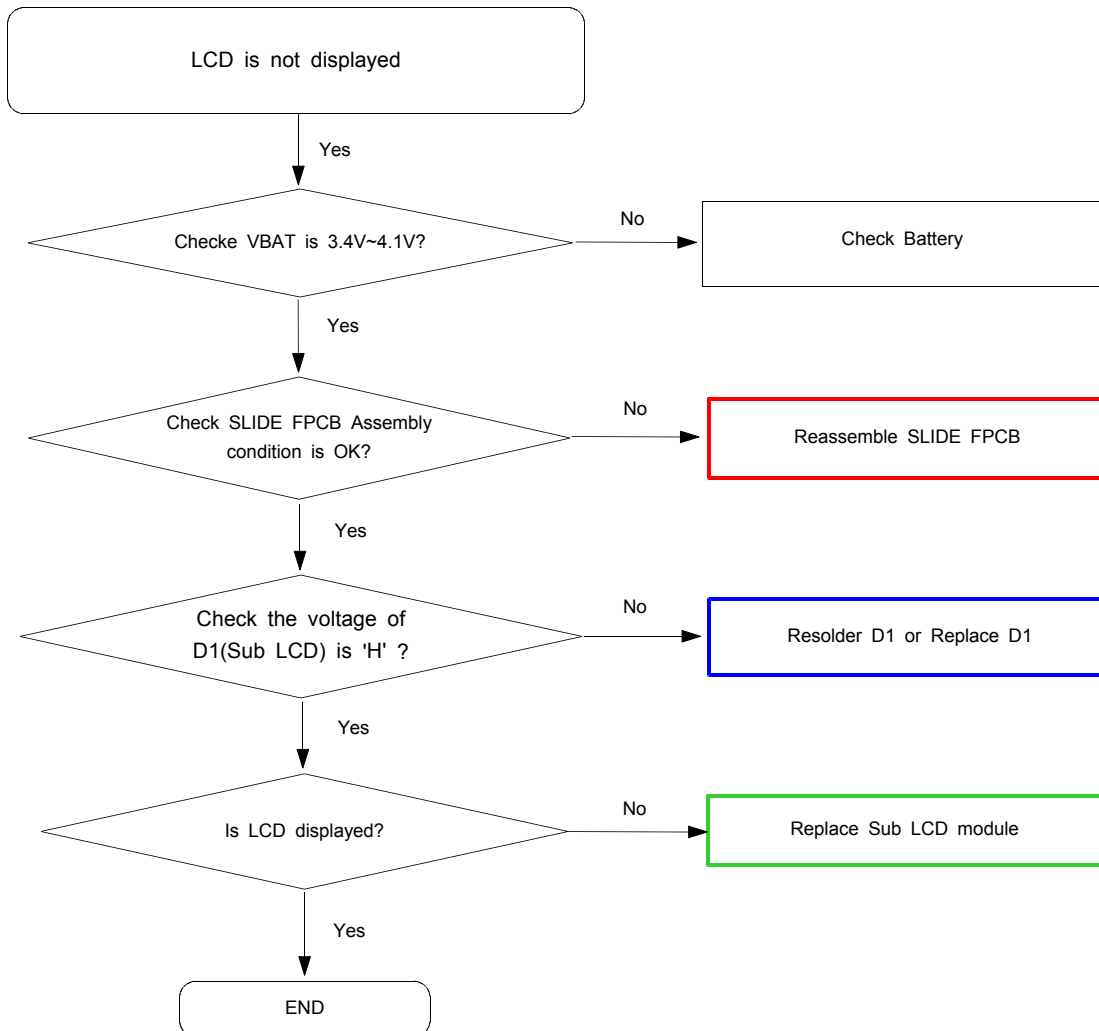


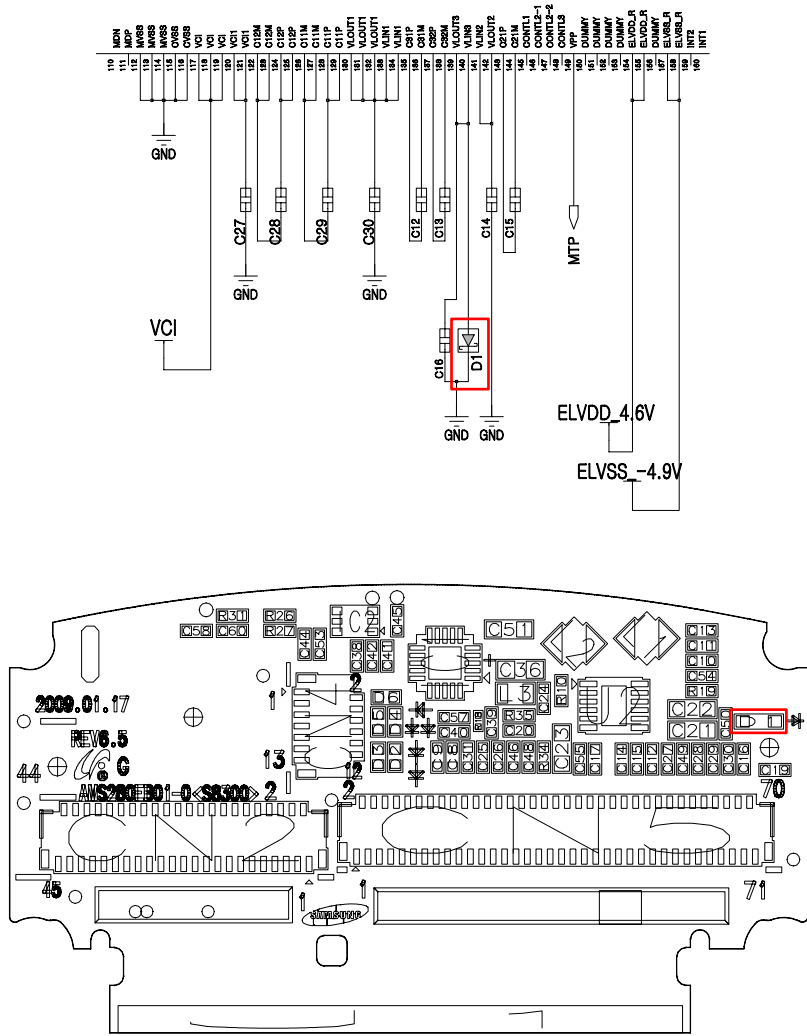
10-12-2. Camera Flash



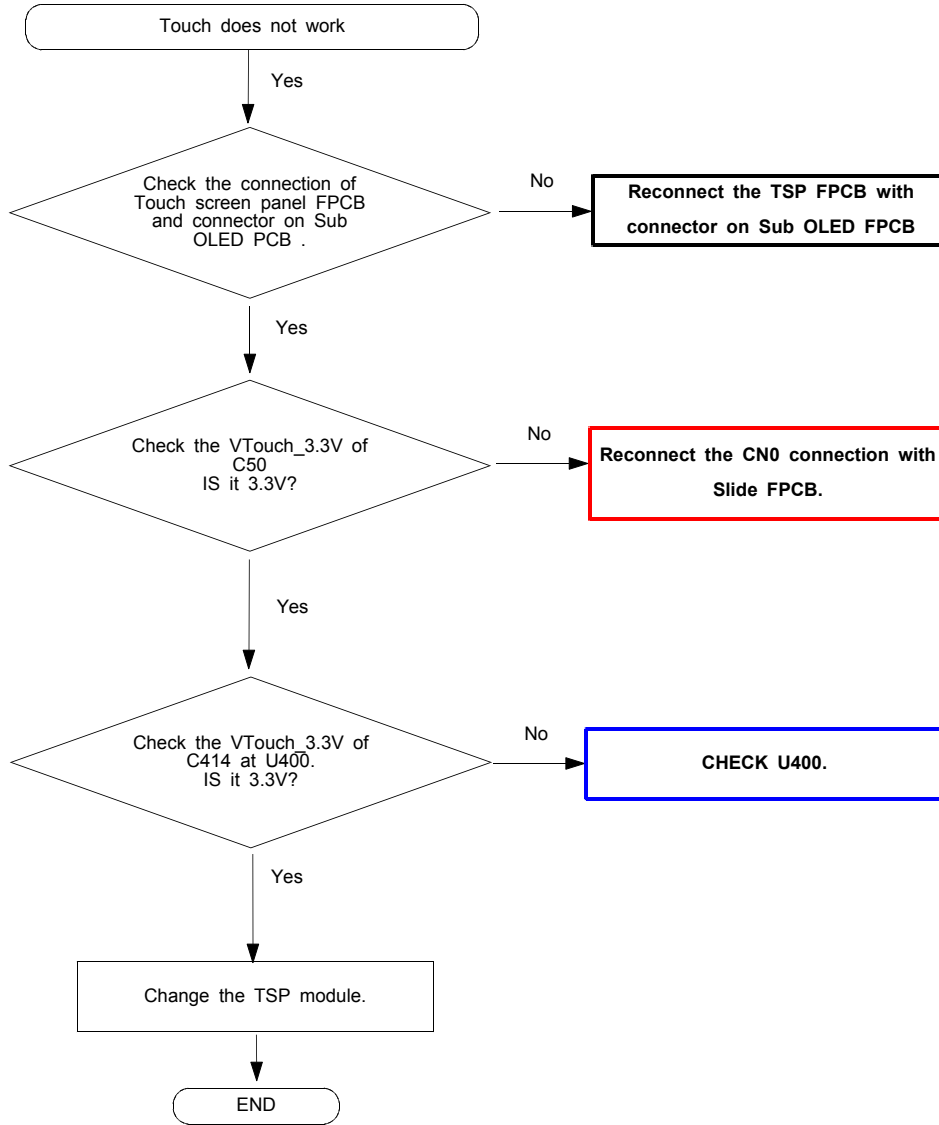


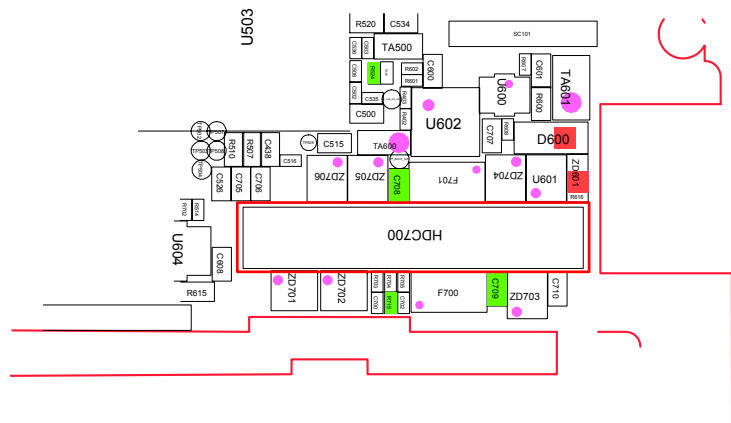
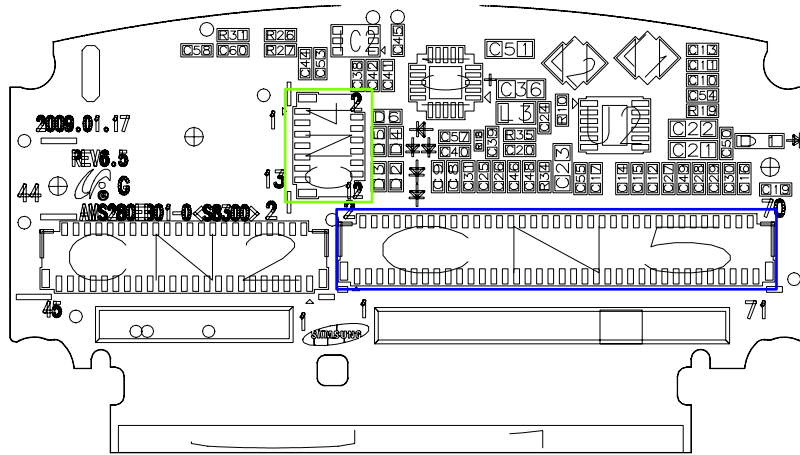
10-13. LCD(AMOLED) Part



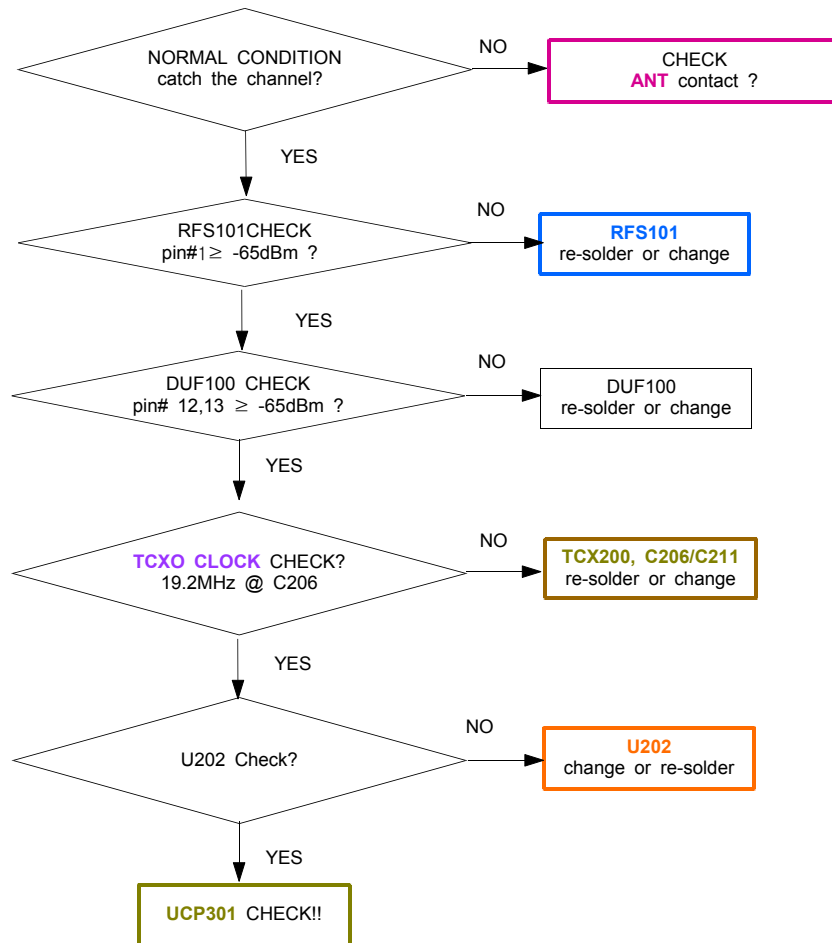


10.14 Touch Screen Panel (TSP)



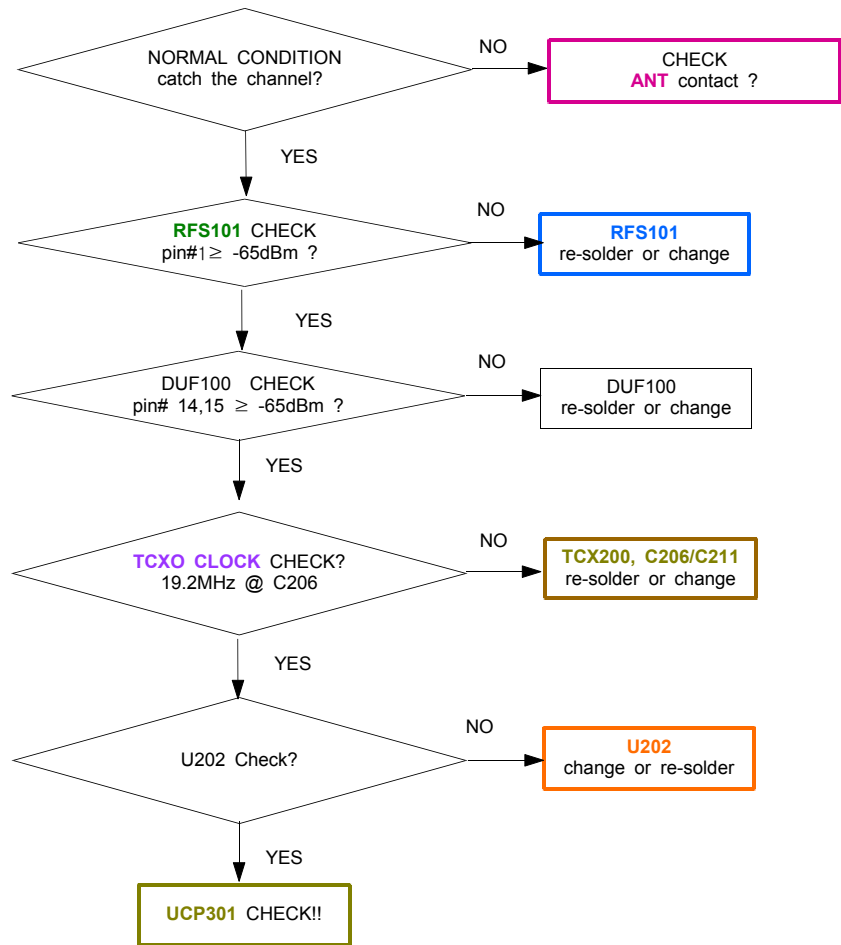


10-15-1. GSM850 Receiver



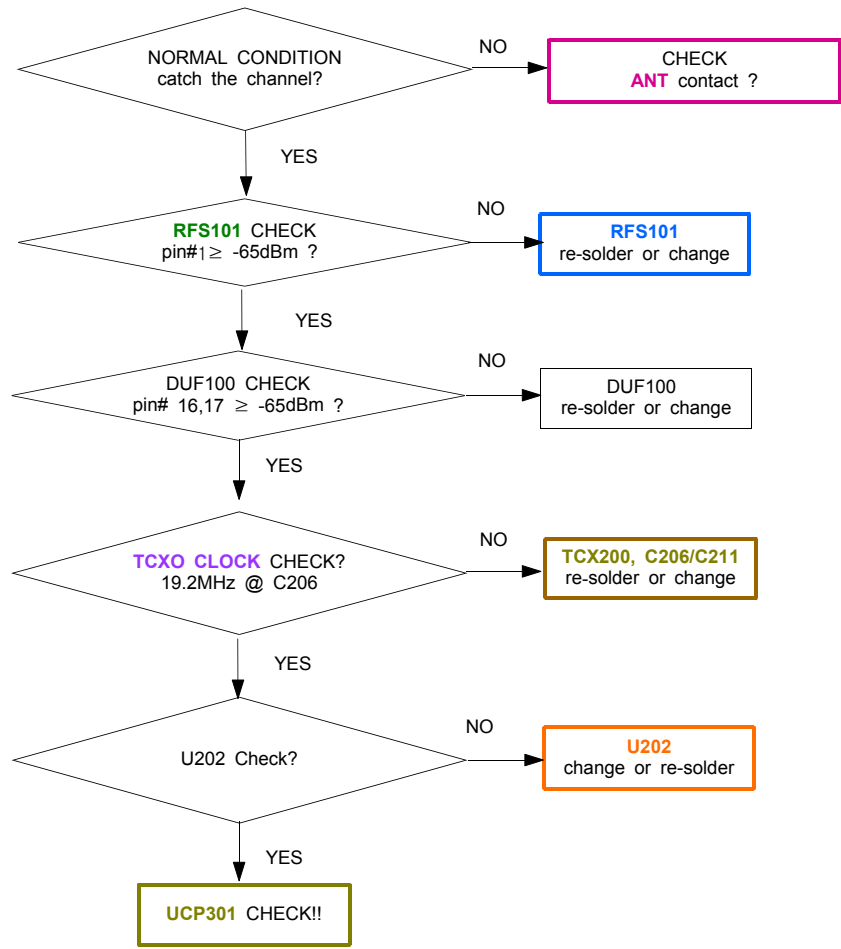
10-15-2. EGSM Receiver

Band : GSM
CELL POWER : -50dBm
Channel : 62Ch



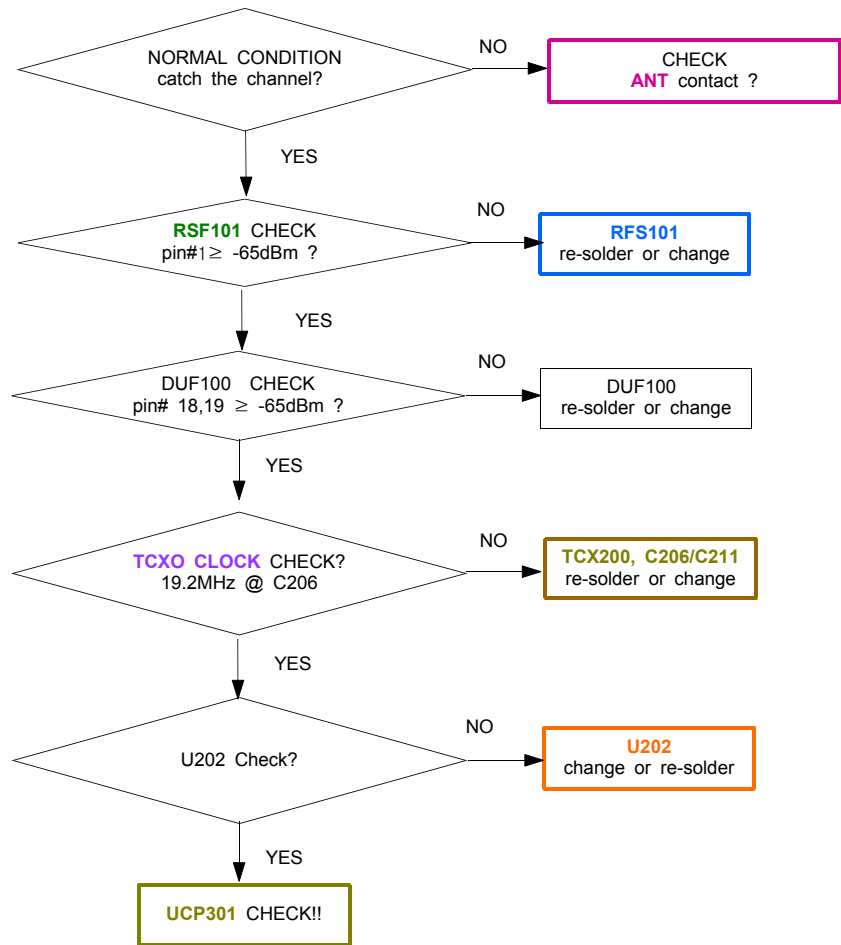
10-15-3. DCS Receiver

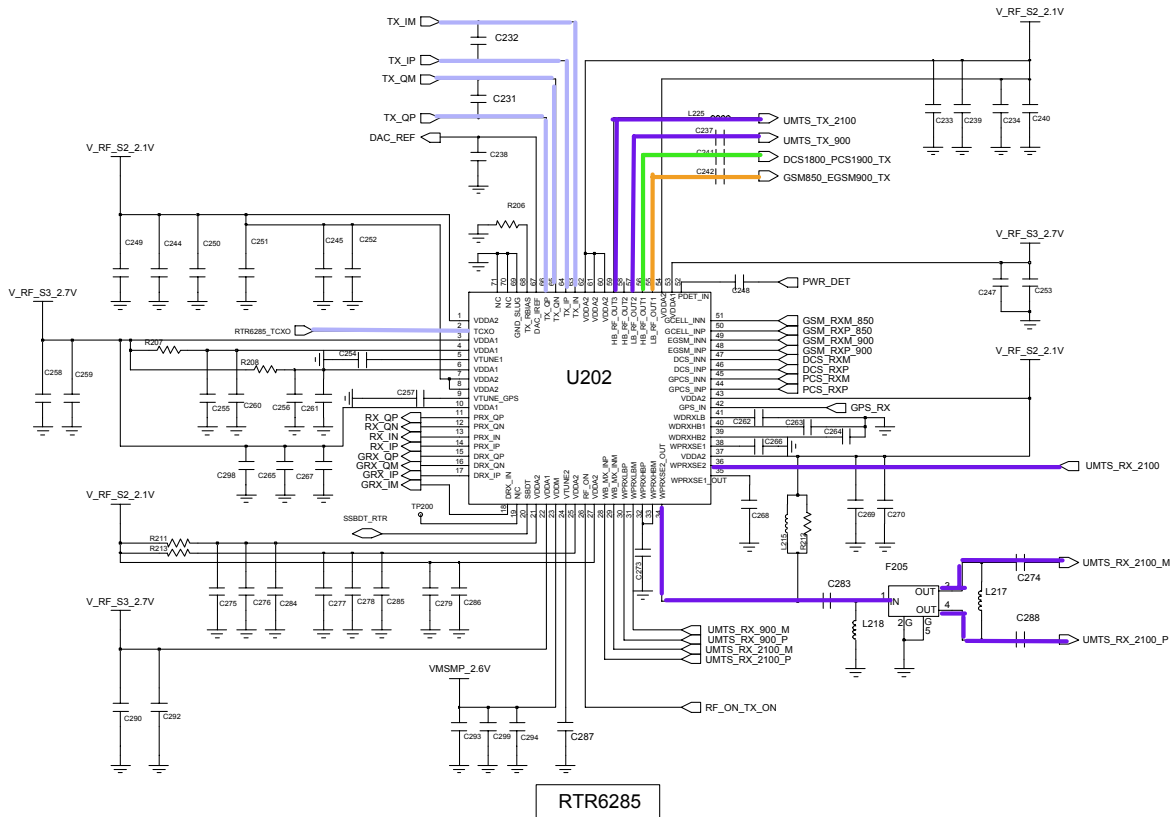
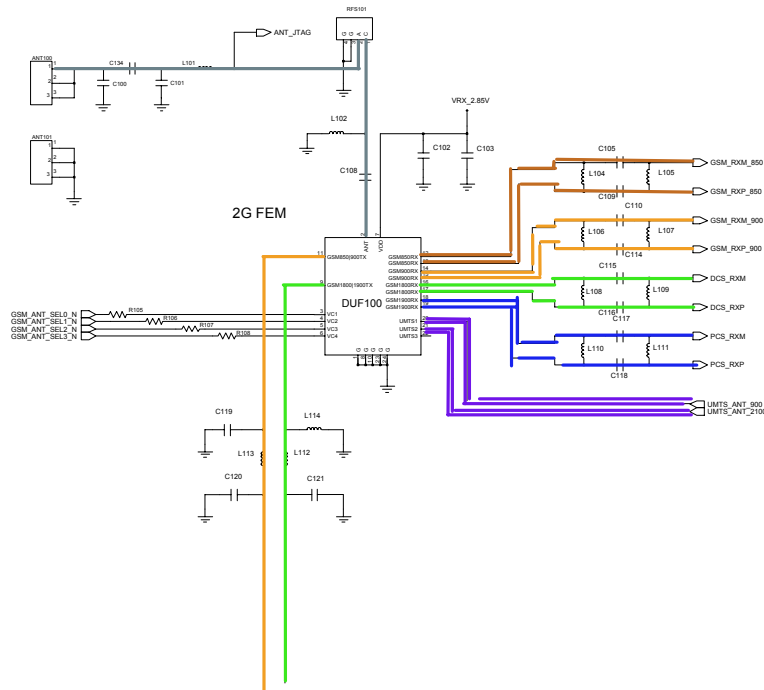
Band : DCS
 CELL POWER : -50dBm
 Channel : 698Ch



10-15-4. PCS Receiver

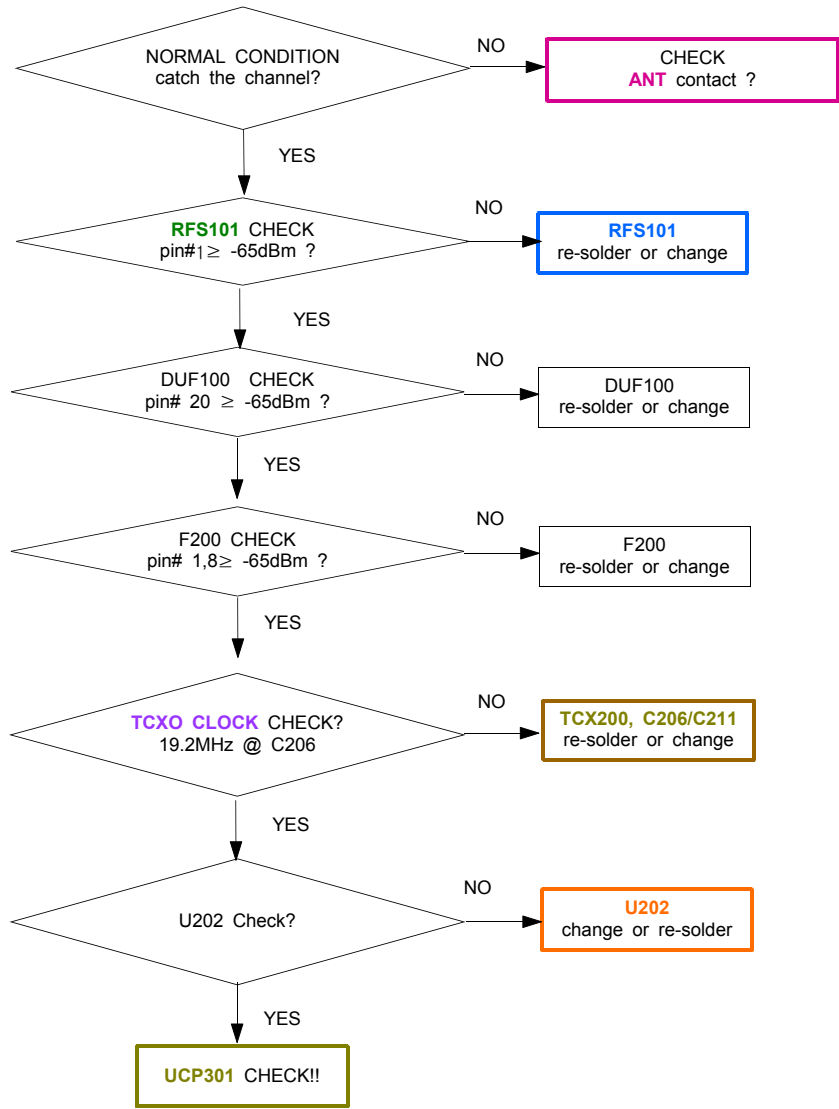
Band : PCS
CELL POWER : -50dBm
Channel : 661Ch





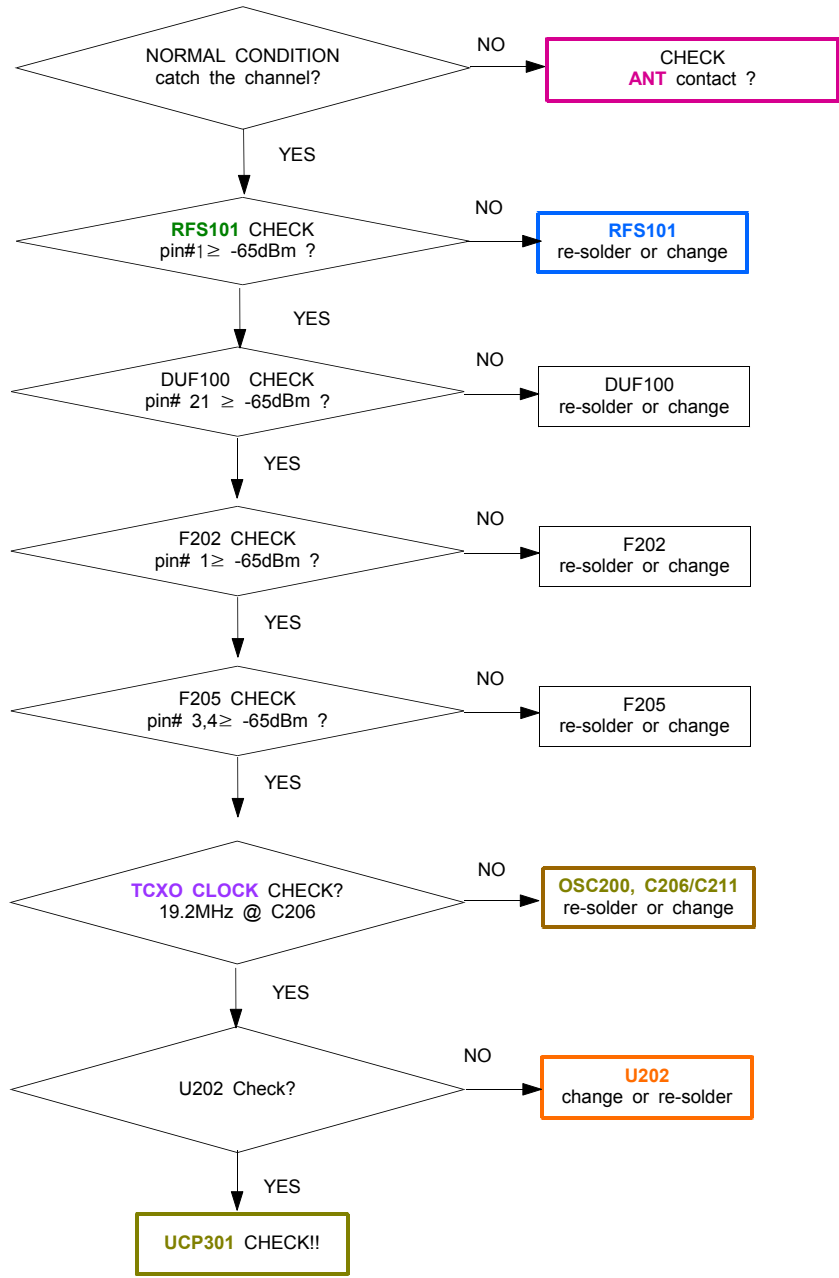
10-15-5. WCDMA 900 Receiver

Band : WCDMA
 CELL POWER : -50dBm
 Channel : 3013Ch

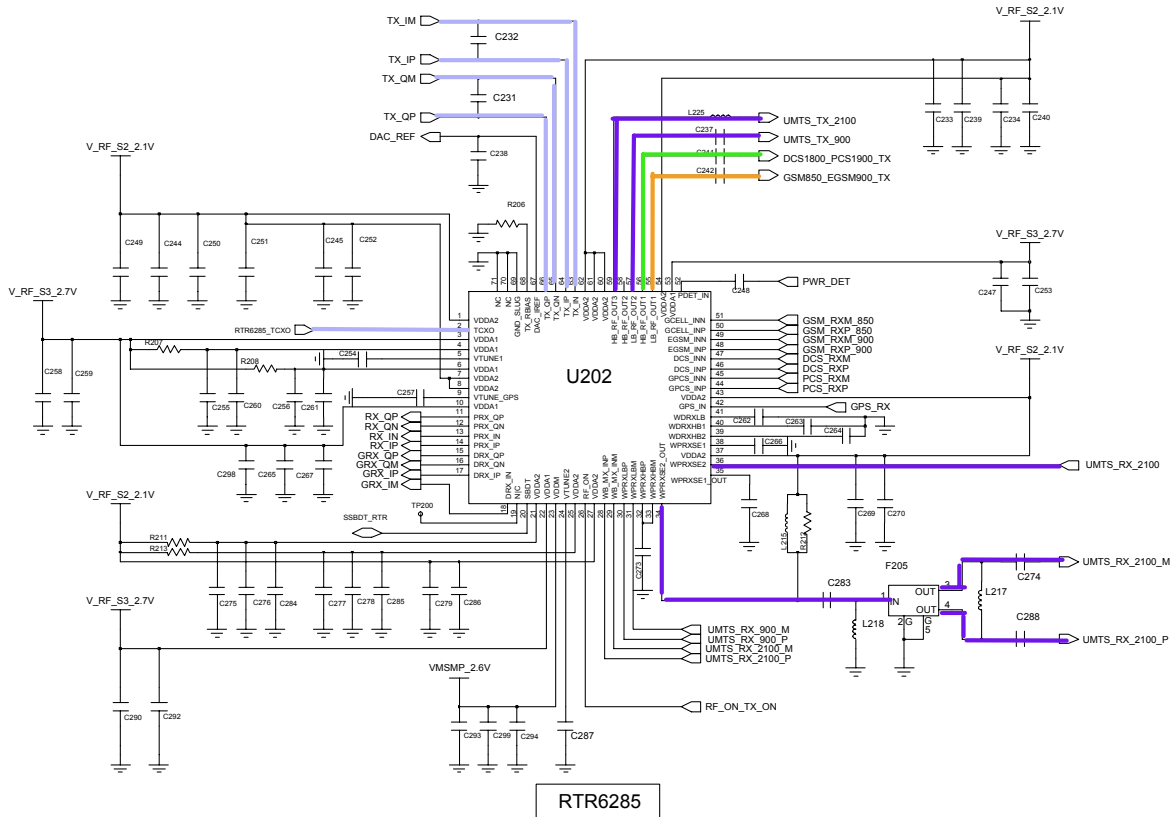
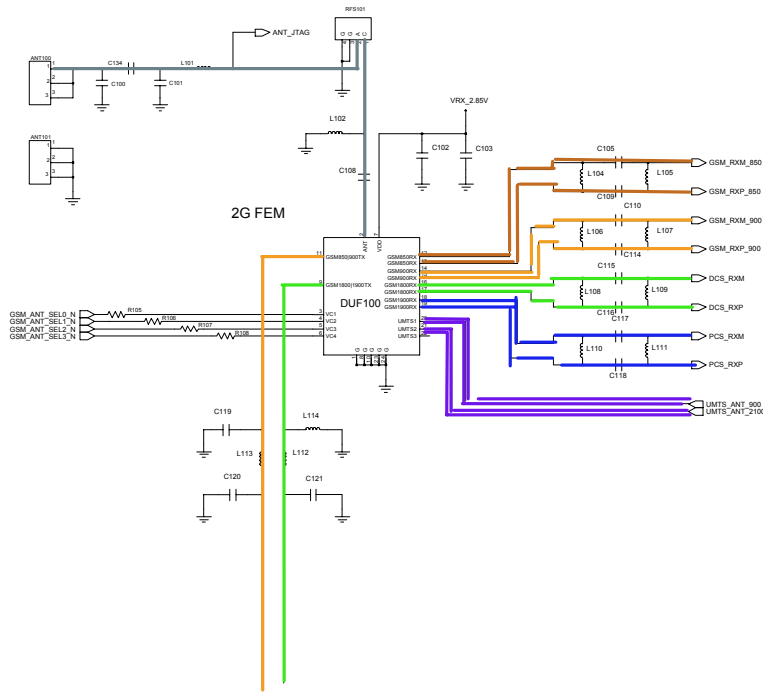


10-15-6. WCDMA 2100 Receiver

Band : WCDMA
 CELL POWER : -50dBm
 Channel : 10700Ch

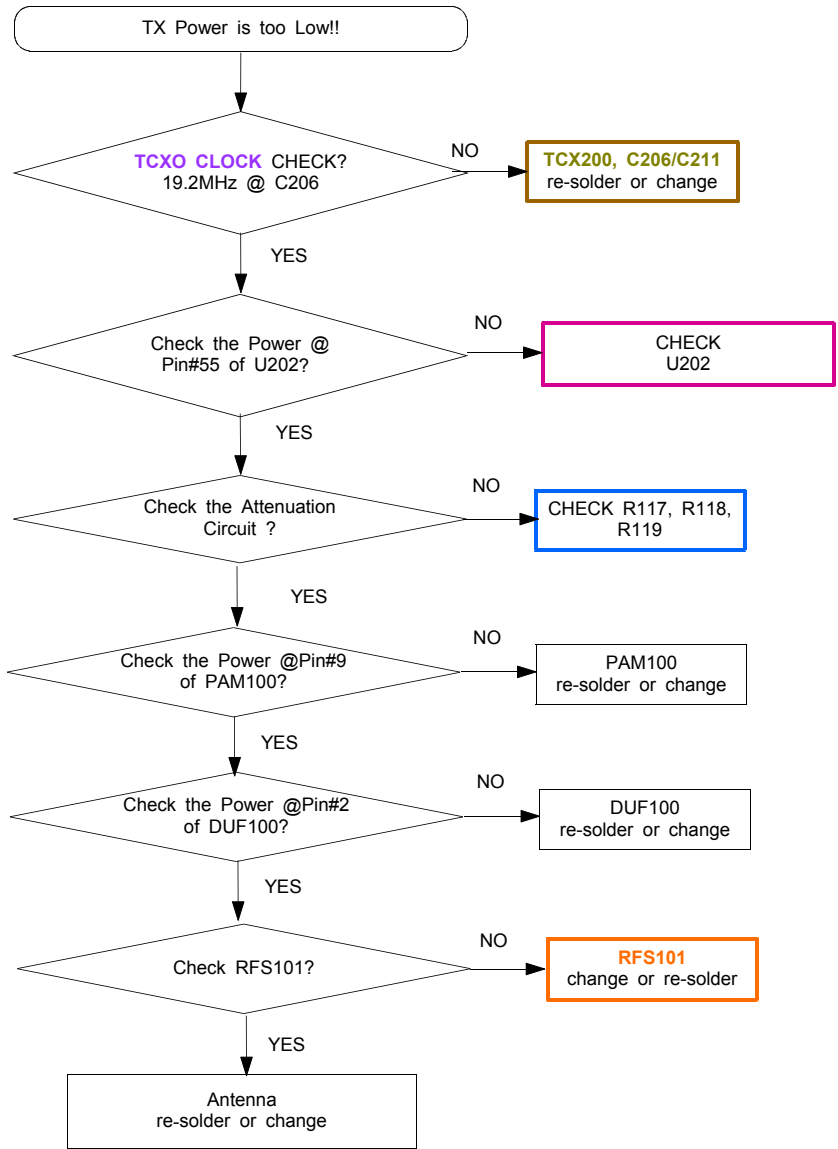


Flow Chart of Troubleshooting



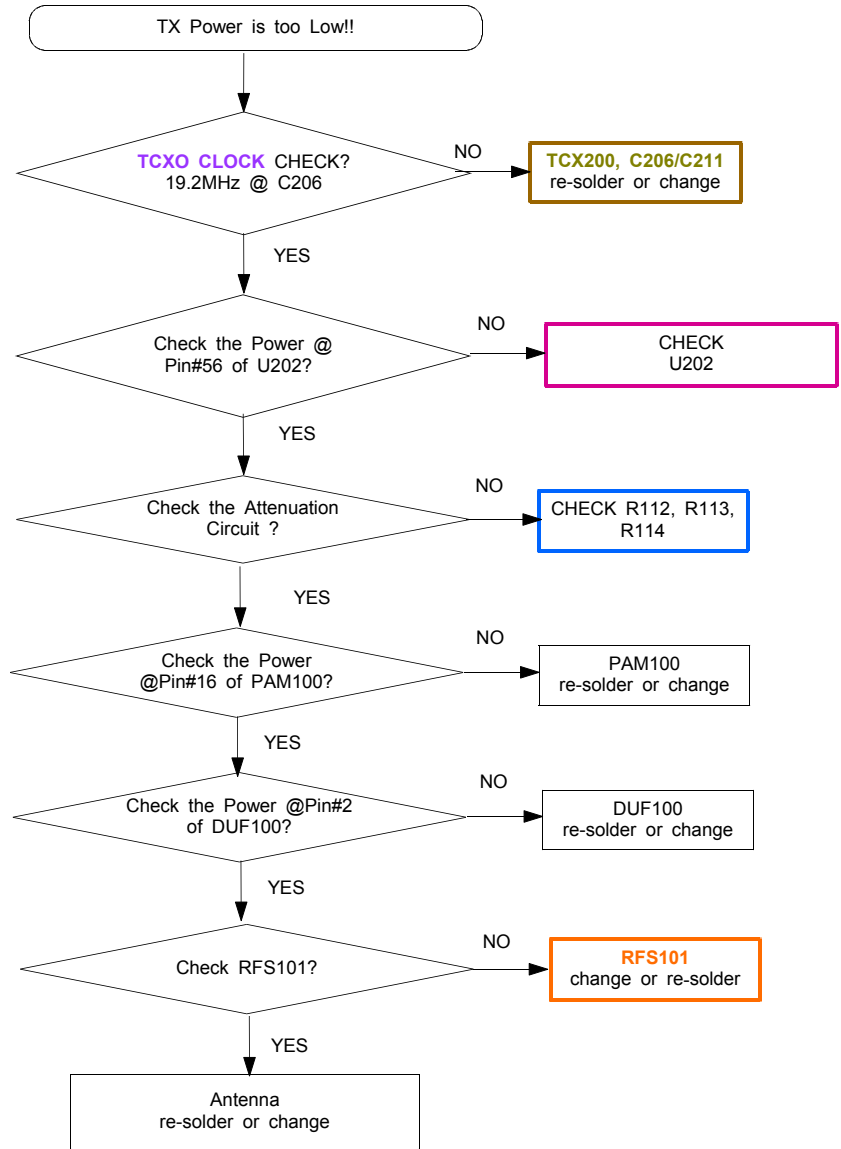
10-16-1. GSM850/EGSM transmitter

Band : GSM850 /EGSM
CELL POWER : -50dBm
TX LEVEL : 5
Channel : 190 Ch / 62 Ch

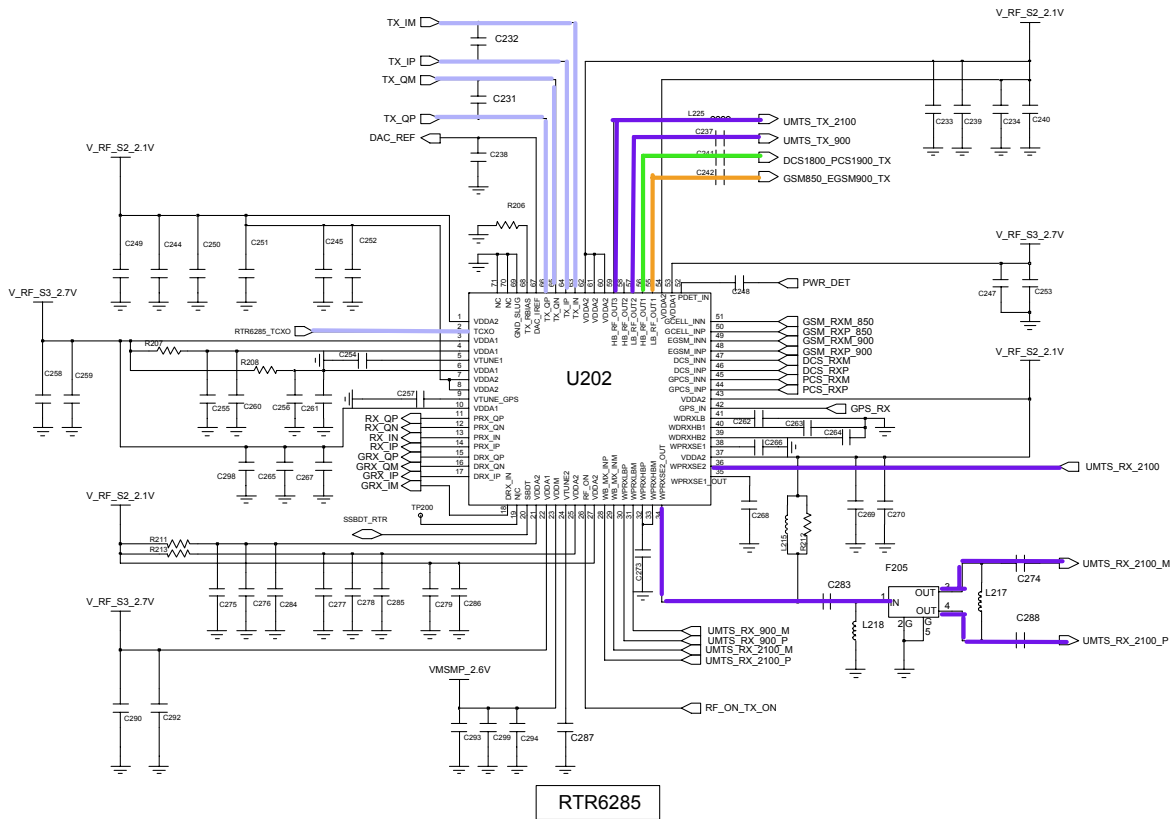
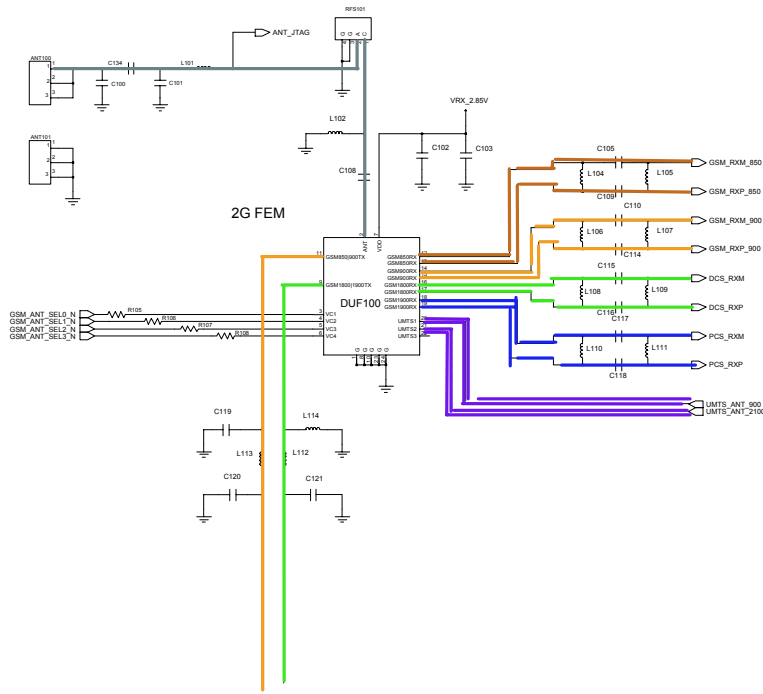


10-16-2. DCS/PCS transmitter

Band : DCS /PCS
 CELL POWER : -50dBm
 TX LEVEL : 0
 Channel : 698 Ch / 661 Ch

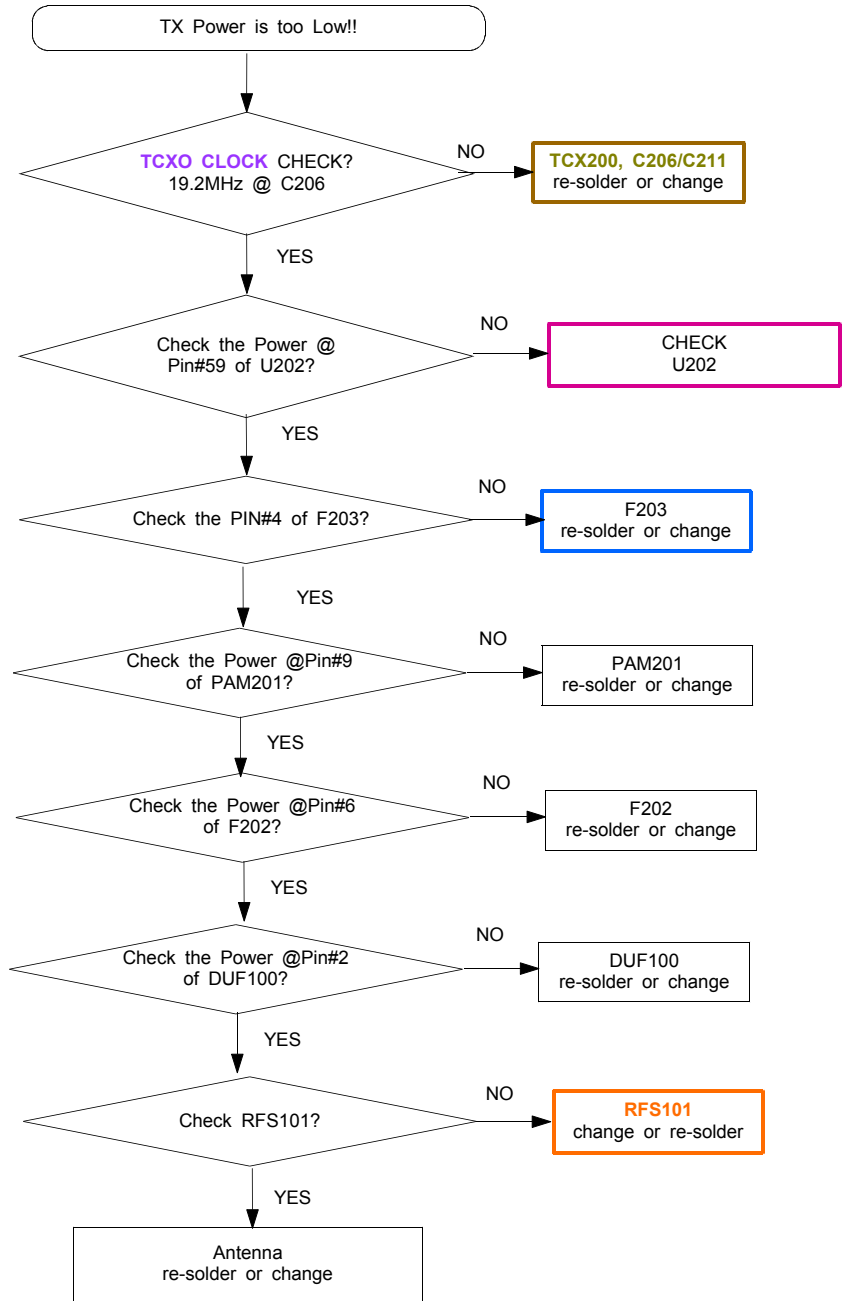


Flow Chart of Troubleshooting



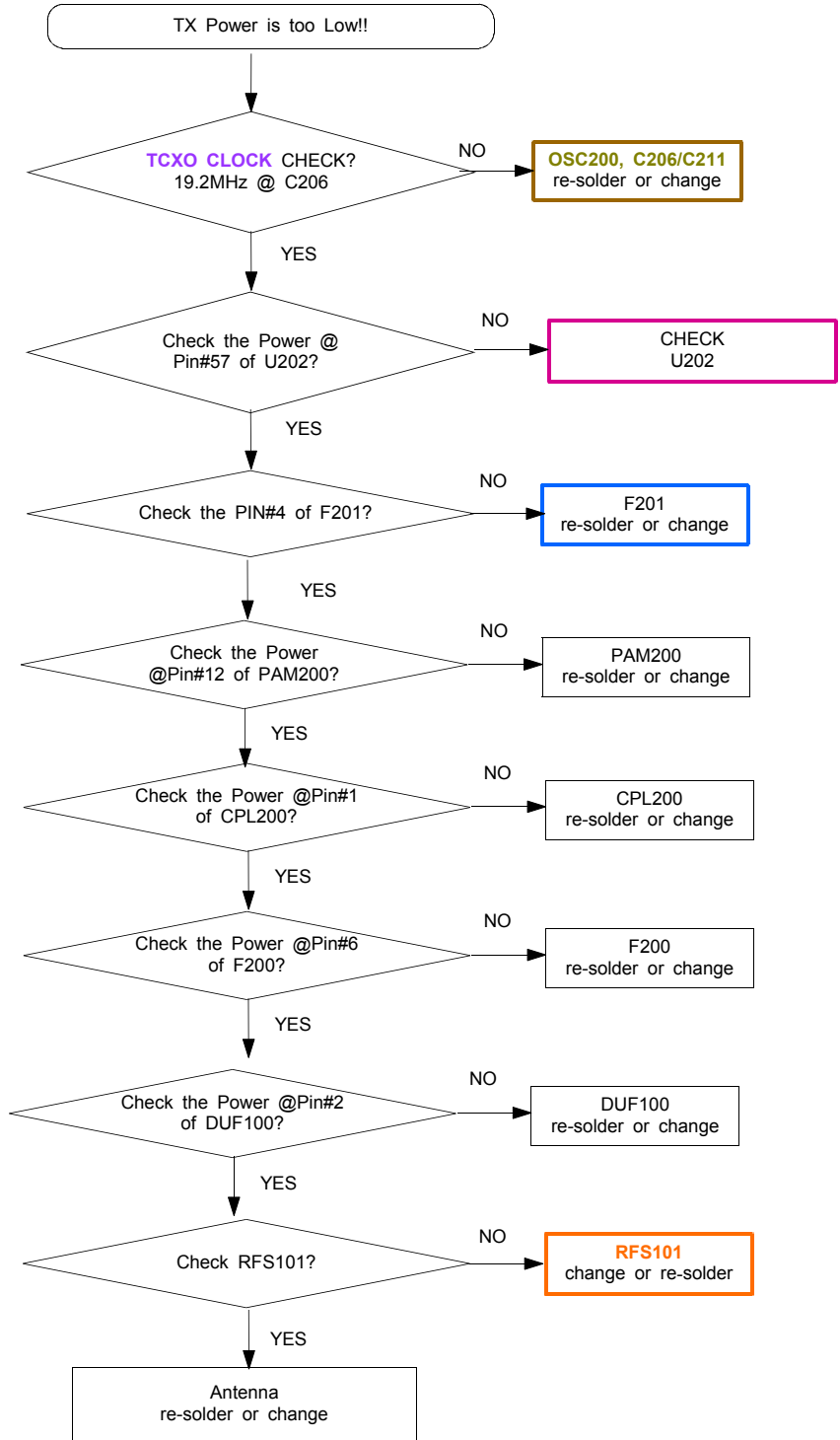
10-16-3. WCDMA 2100 transmitter

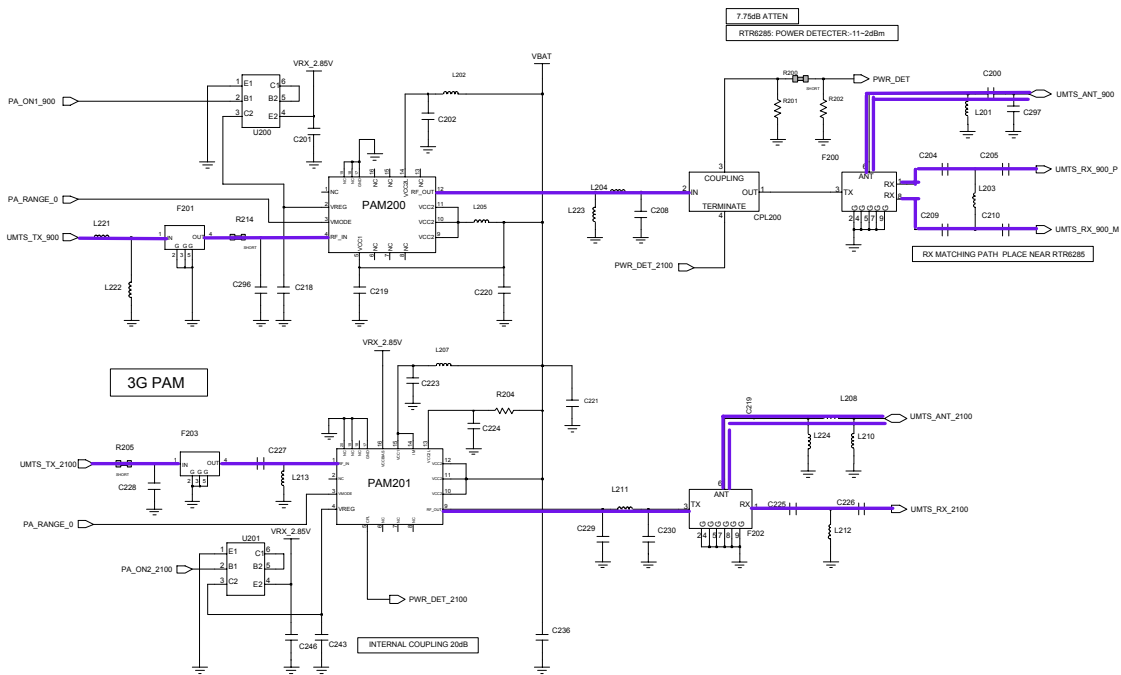
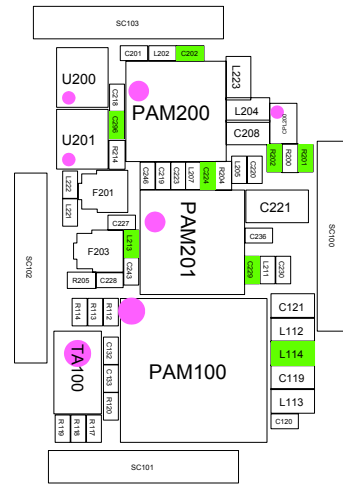
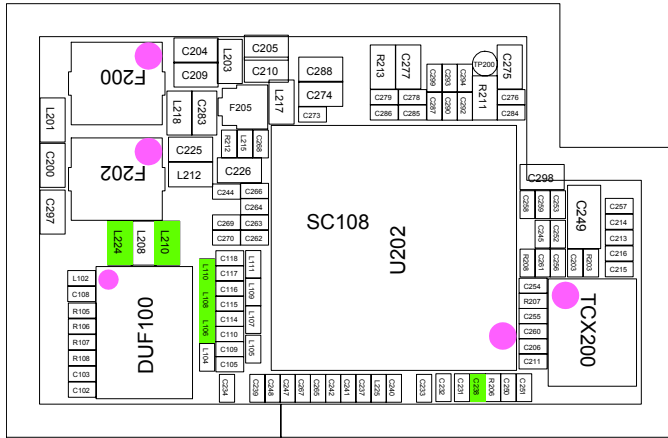
Band : WCDMA
 CELL POWER : -50dBm
 TARGET POWER : 22 dBm
 DL Channel : 10700 Ch



10-16-4. WCDMA 900 transmitter

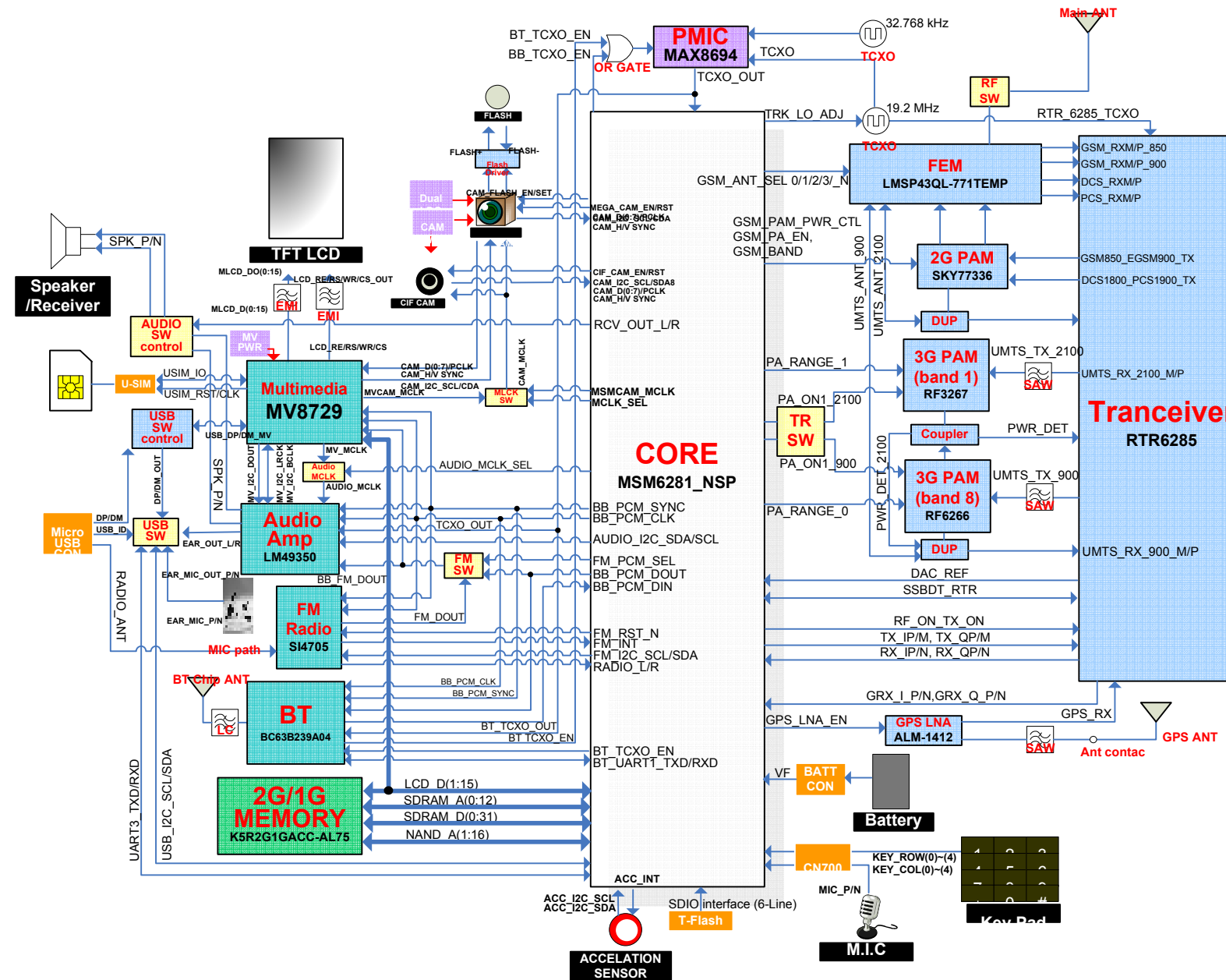
Band : WCDMA
 CELL POWER : -50dBm
 TARGET POWER : 22 dBm
 DL Channel : 3013 Ch



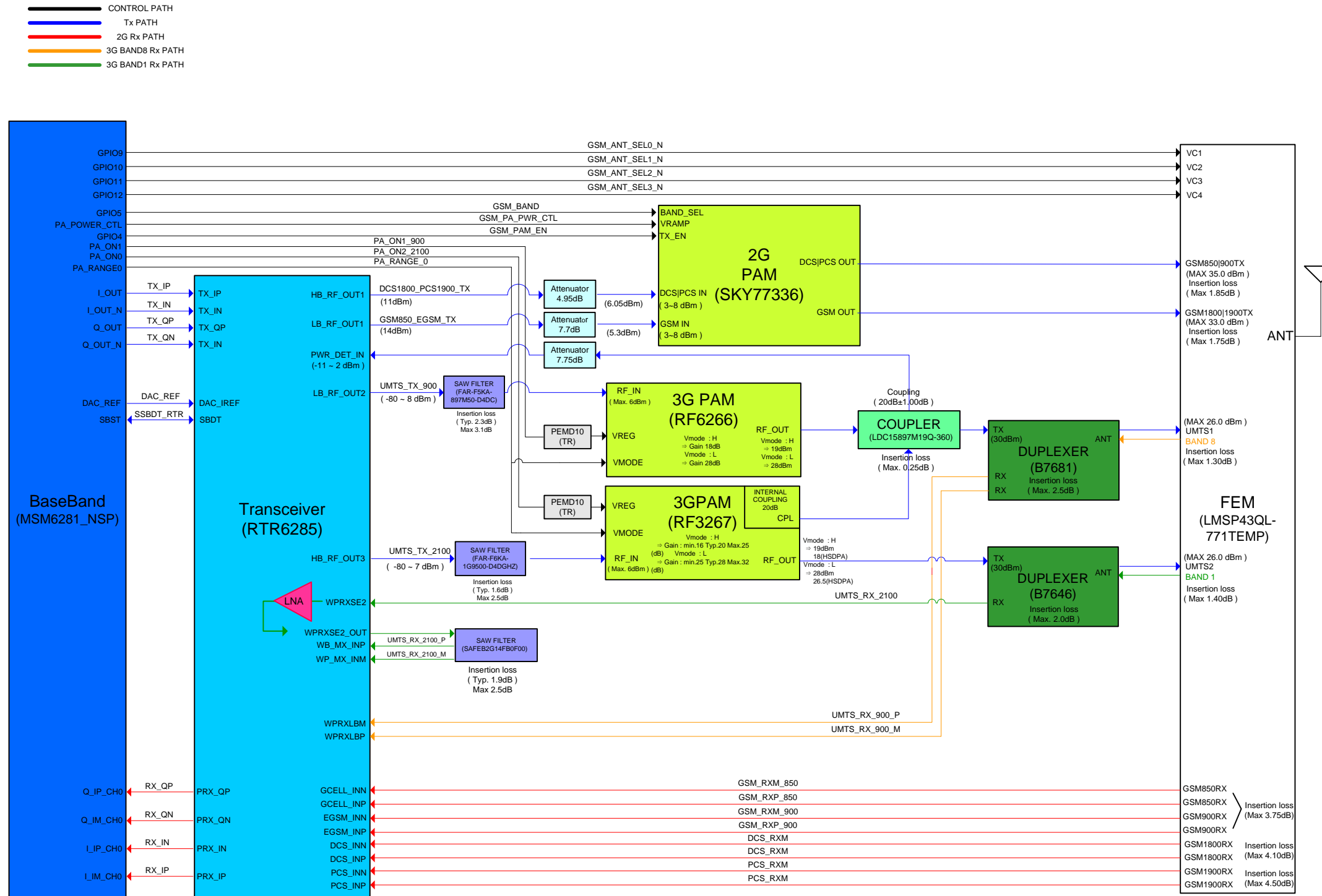


8. Block Diagrams

8-1. Main Block Diagram



8-2. RF Block Diagram



8-3. BT&FM Radio Block diagram

S8300 REV0.3 BT & FM Radio BLOCK DIAGRAM

