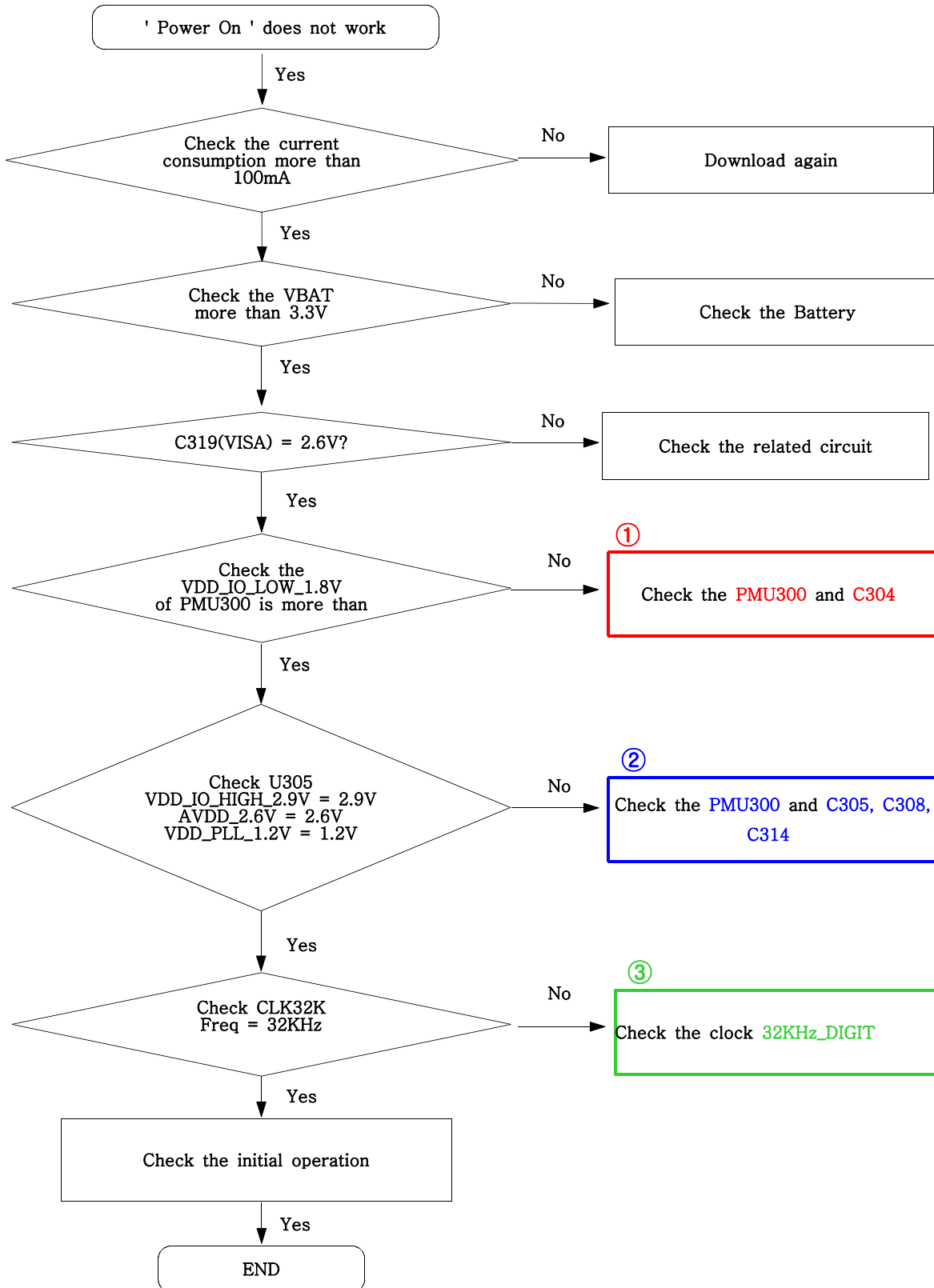


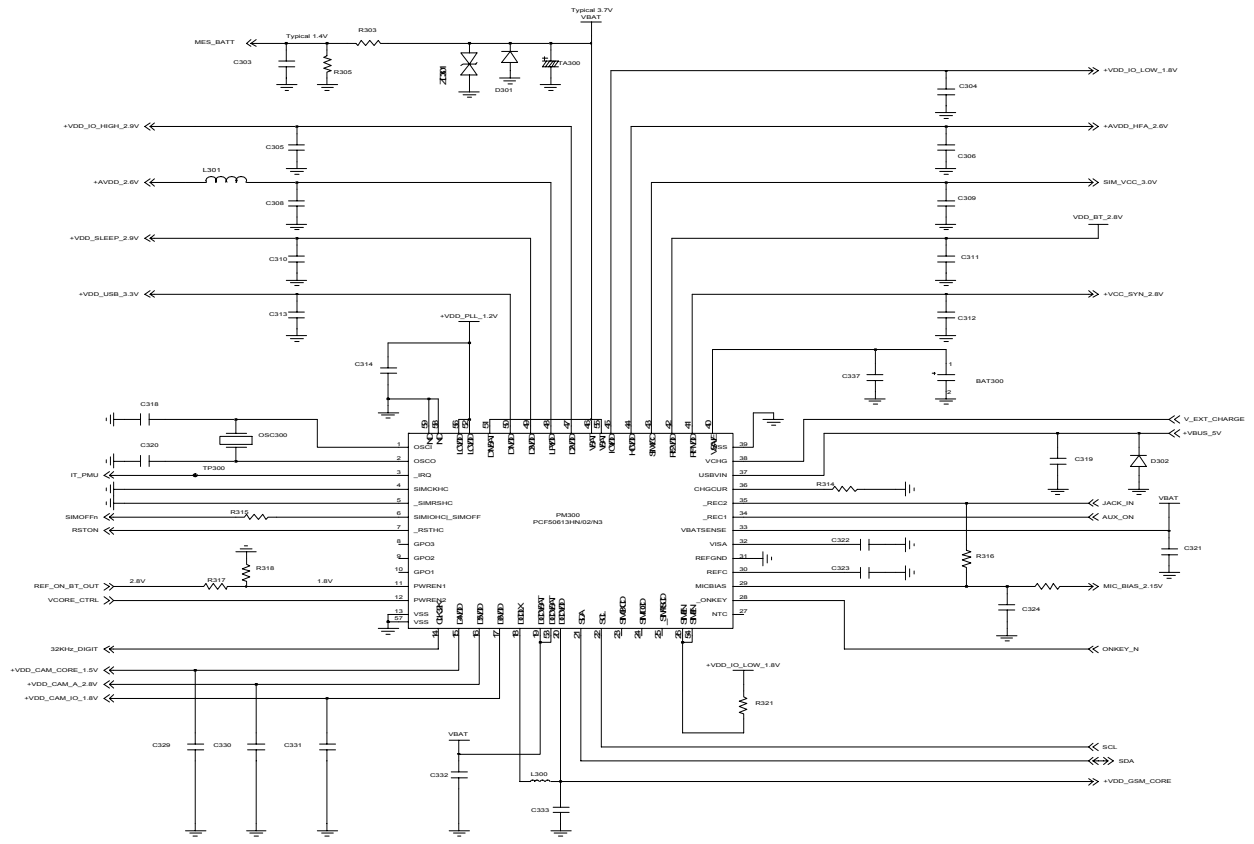
# 9. Flow Chart of Troubleshooting

## 9-1. Power On

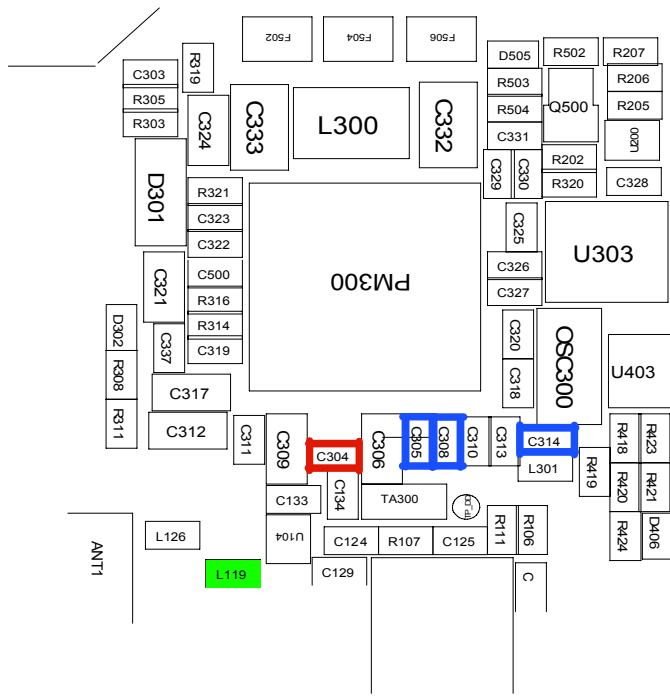


# Flow Chart of Troubleshooting

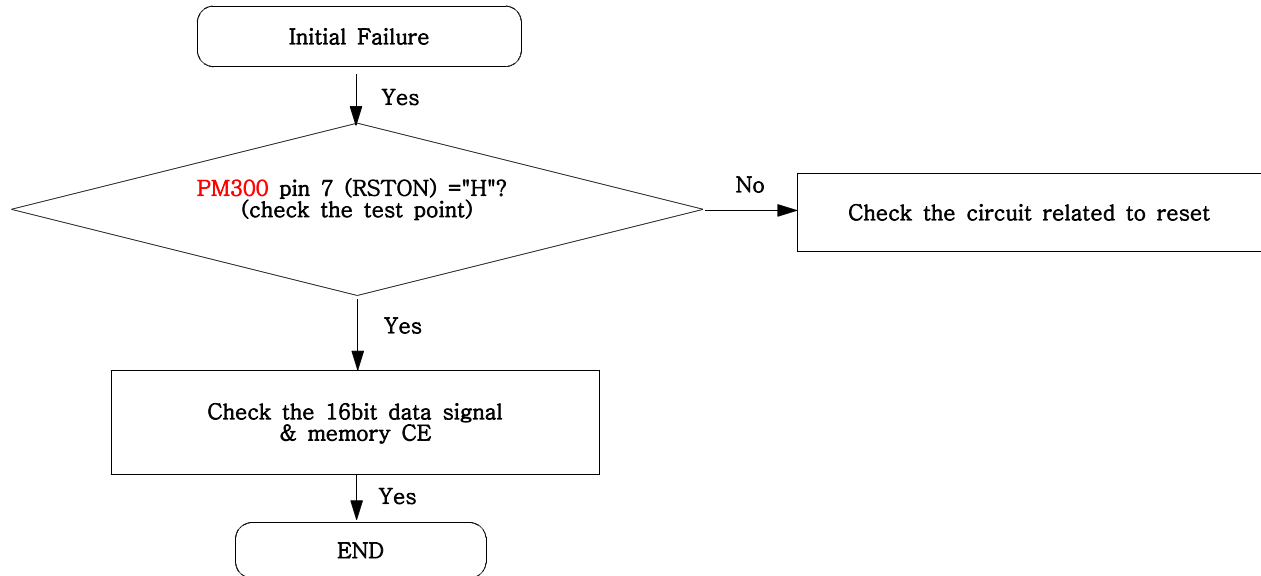
SAMSUNG CONFIDENTIAL  
 THIS DOCUMENT CONTAINS PROPRIETARY INFORMATION. IT IS NOT TO BE REPRODUCED OR TRANSMITTED IN ANY FORM OR BY ANY MEANS, ELECTRONIC OR MECHANICAL, WITHOUT PERMISSION IN WRITING FROM SAMSUNG ELECTRONICS CO., LTD. ALL RIGHTS RESERVED. COPYRIGHT © 2012 SAMSUNG ELECTRONICS CO., LTD.



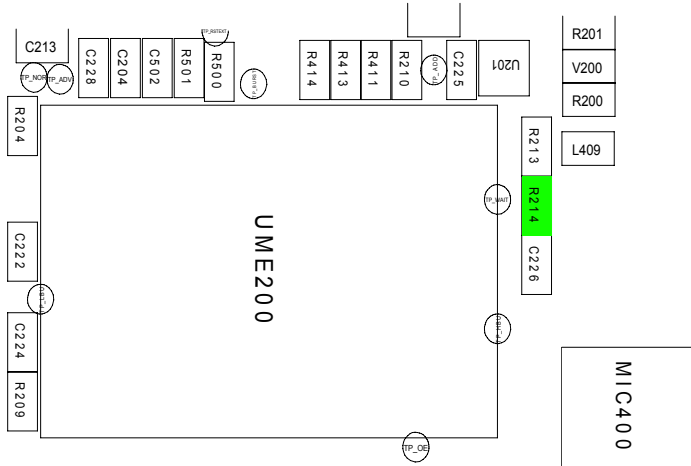
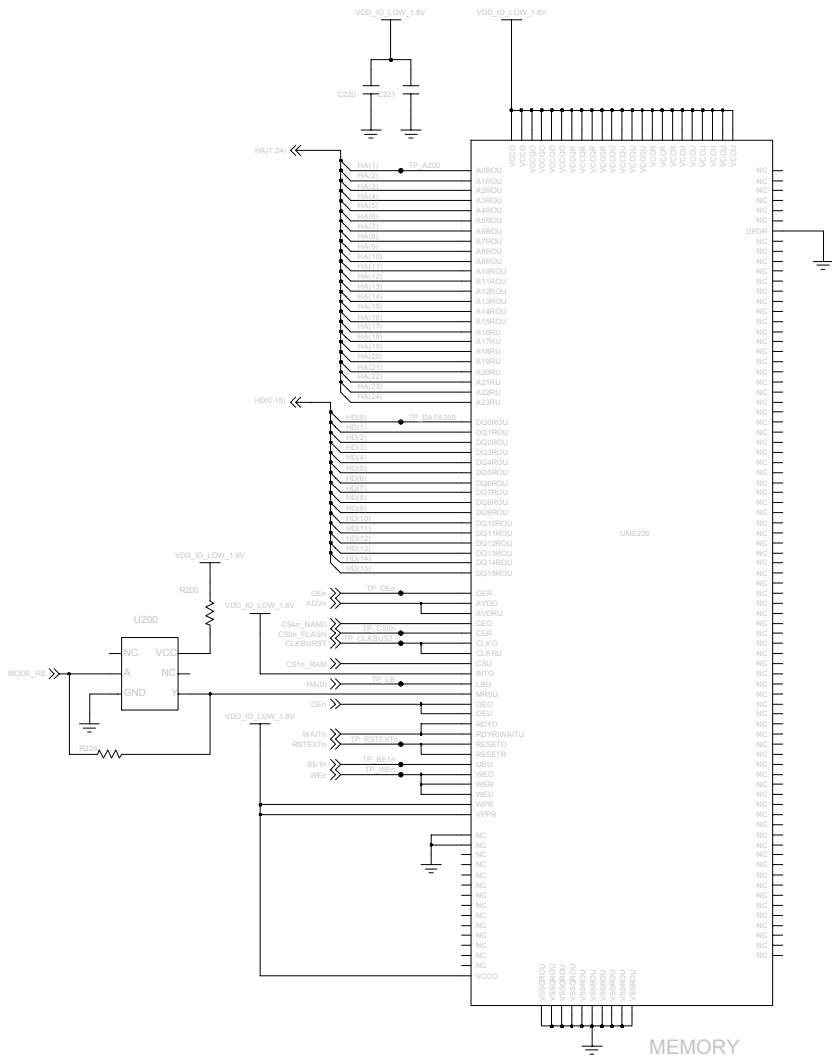
PMIC



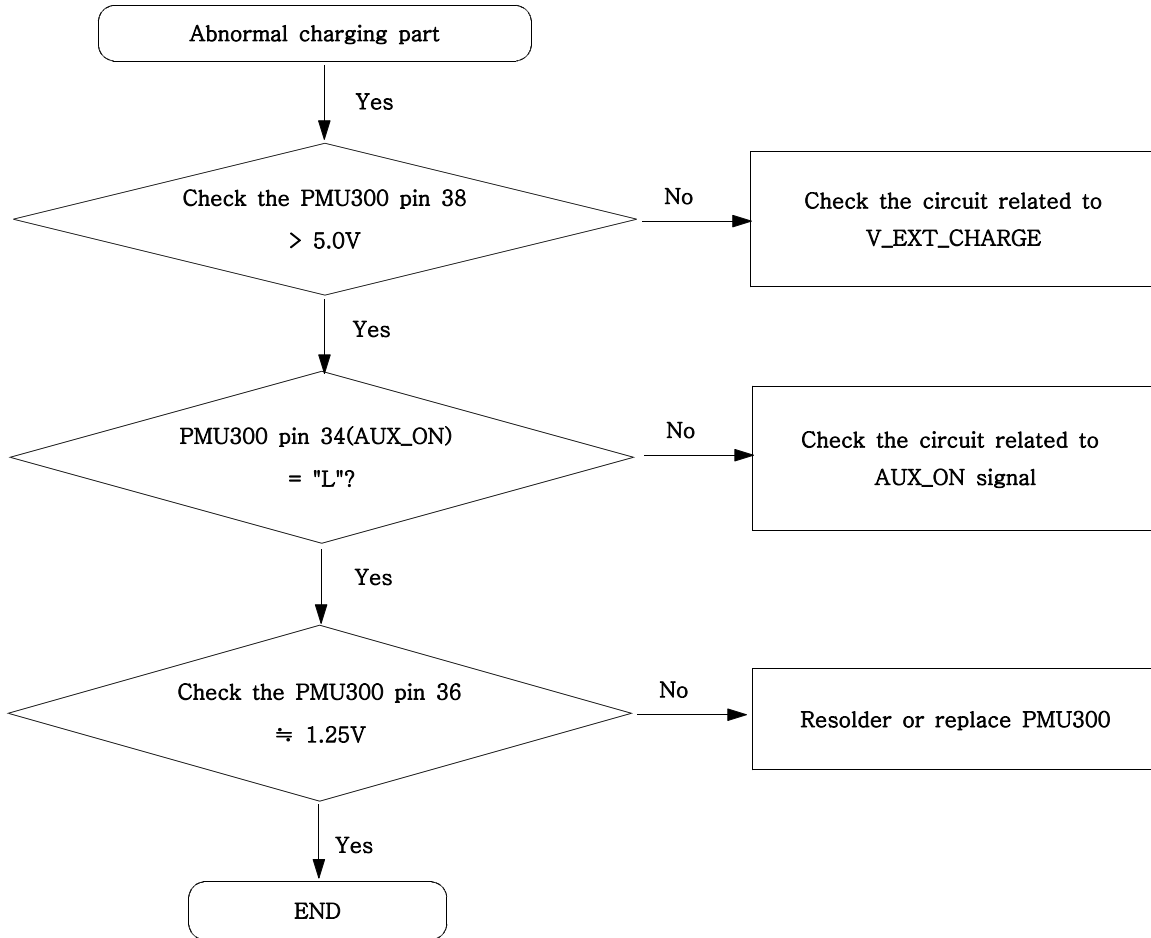
## 9-2. Initial



# Flow Chart of Troubleshooting

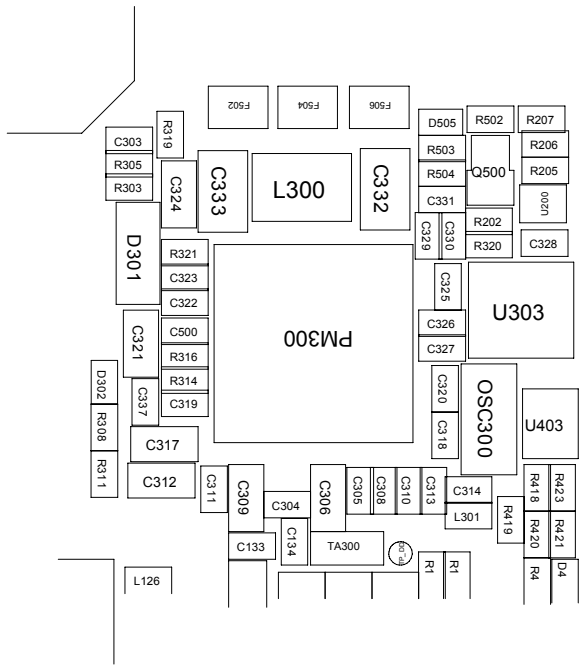
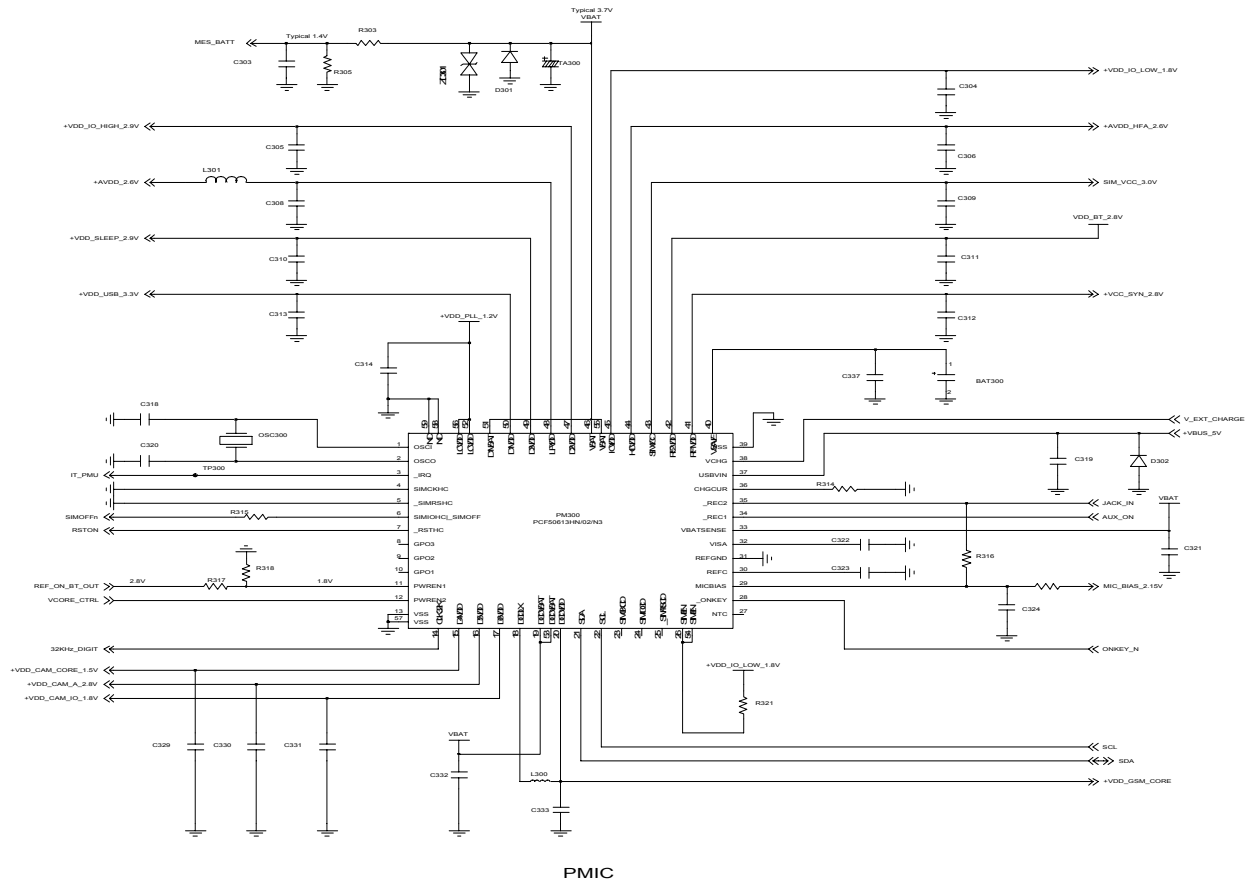


9-3. Charging Part

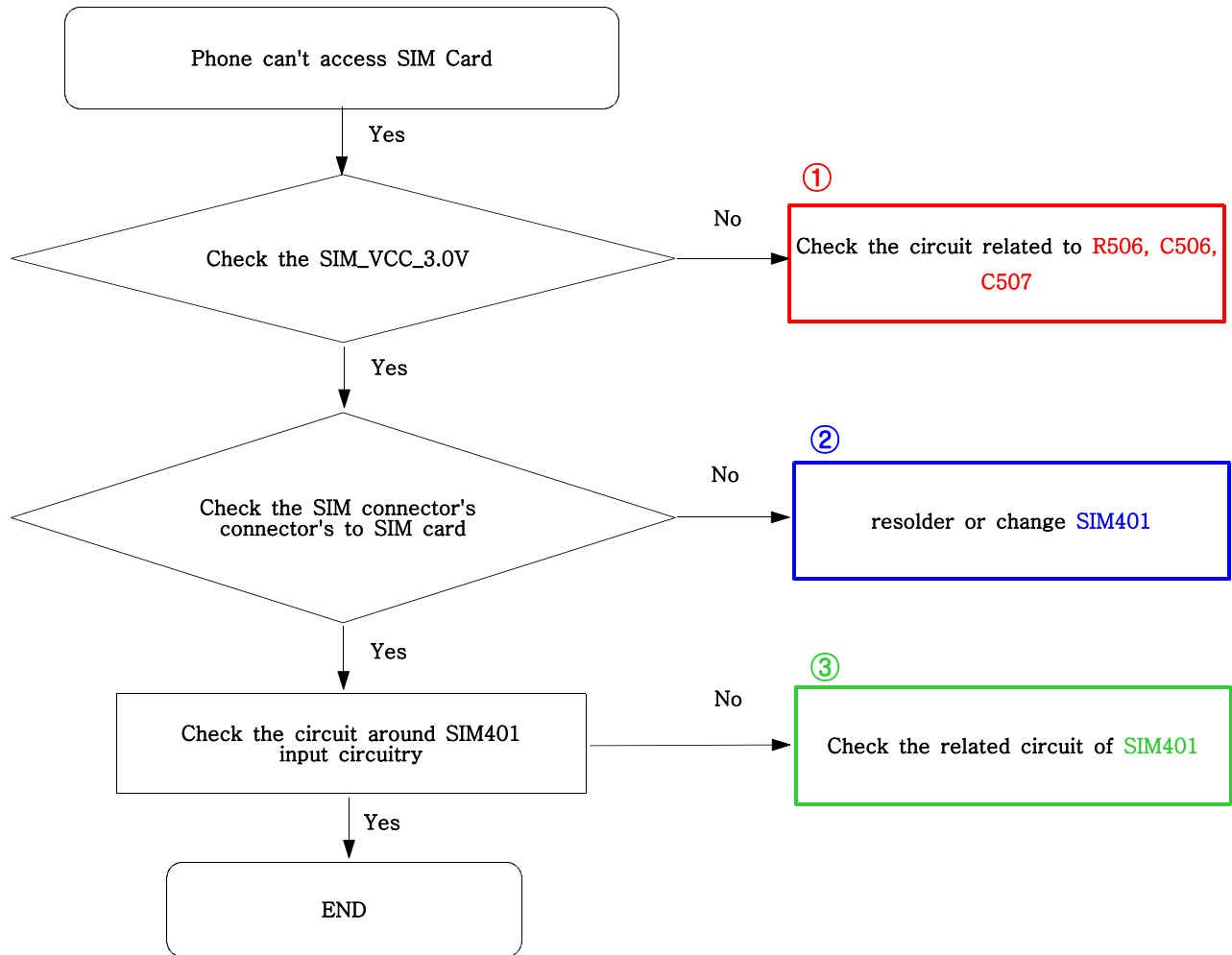


# Flow Chart of Troubleshooting

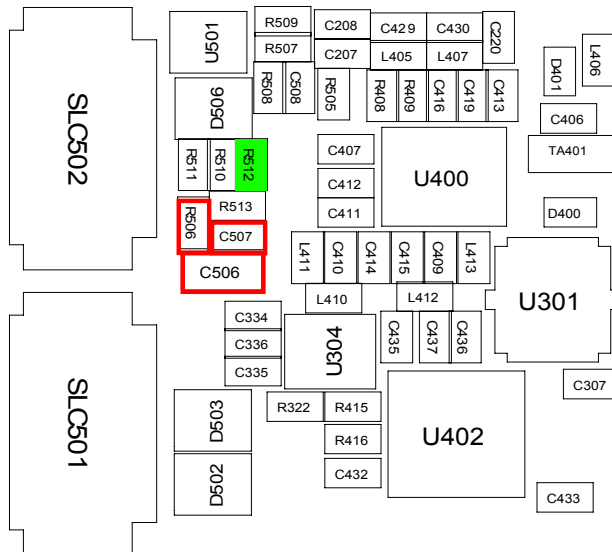
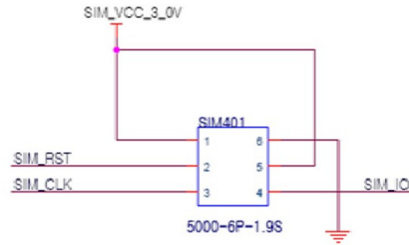
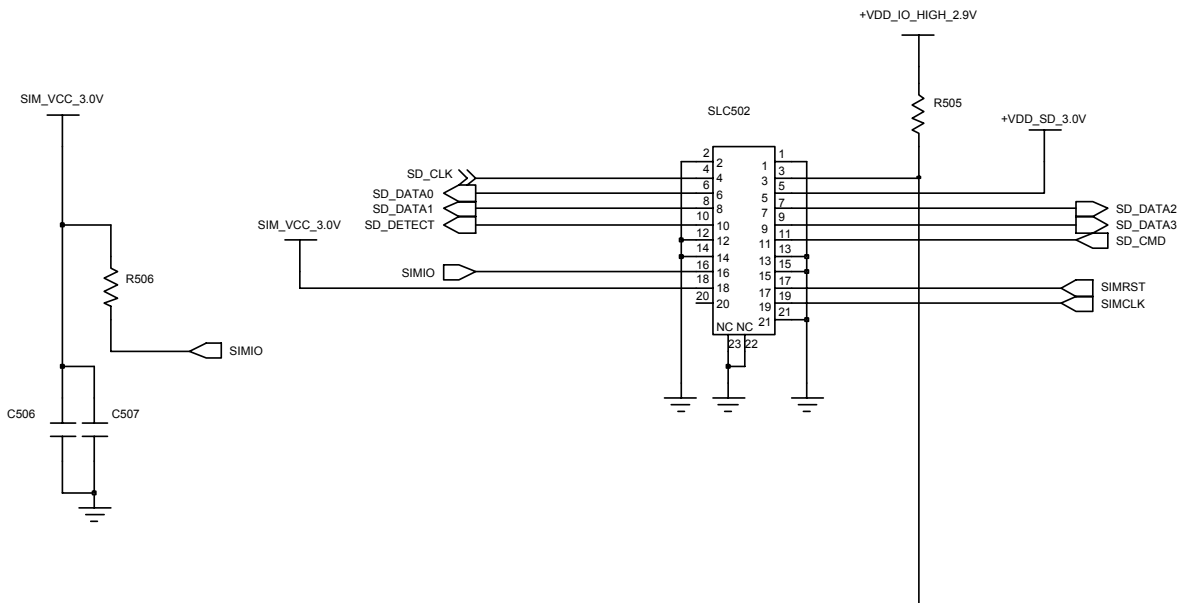
**SAMSUNG CONFIDENTIAL**  
 THIS DOCUMENT CONTAINS PROPRIETARY INFORMATION. INFORMATION IS NOT TO BE DISCLOSED TO ANY OTHER PERSONS WITHOUT THE WRITTEN PERMISSION OF SAMSUNG ELECTRONICS CO., LTD. ANY REPRODUCTION OR TRANSMISSION OF THIS DOCUMENT IS STRICTLY PROHIBITED BY SAMSUNG.



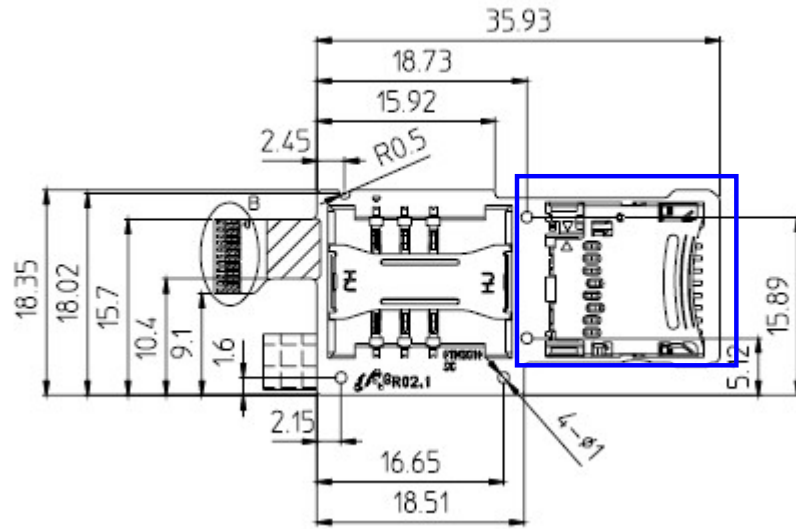
9-4. Sim Part



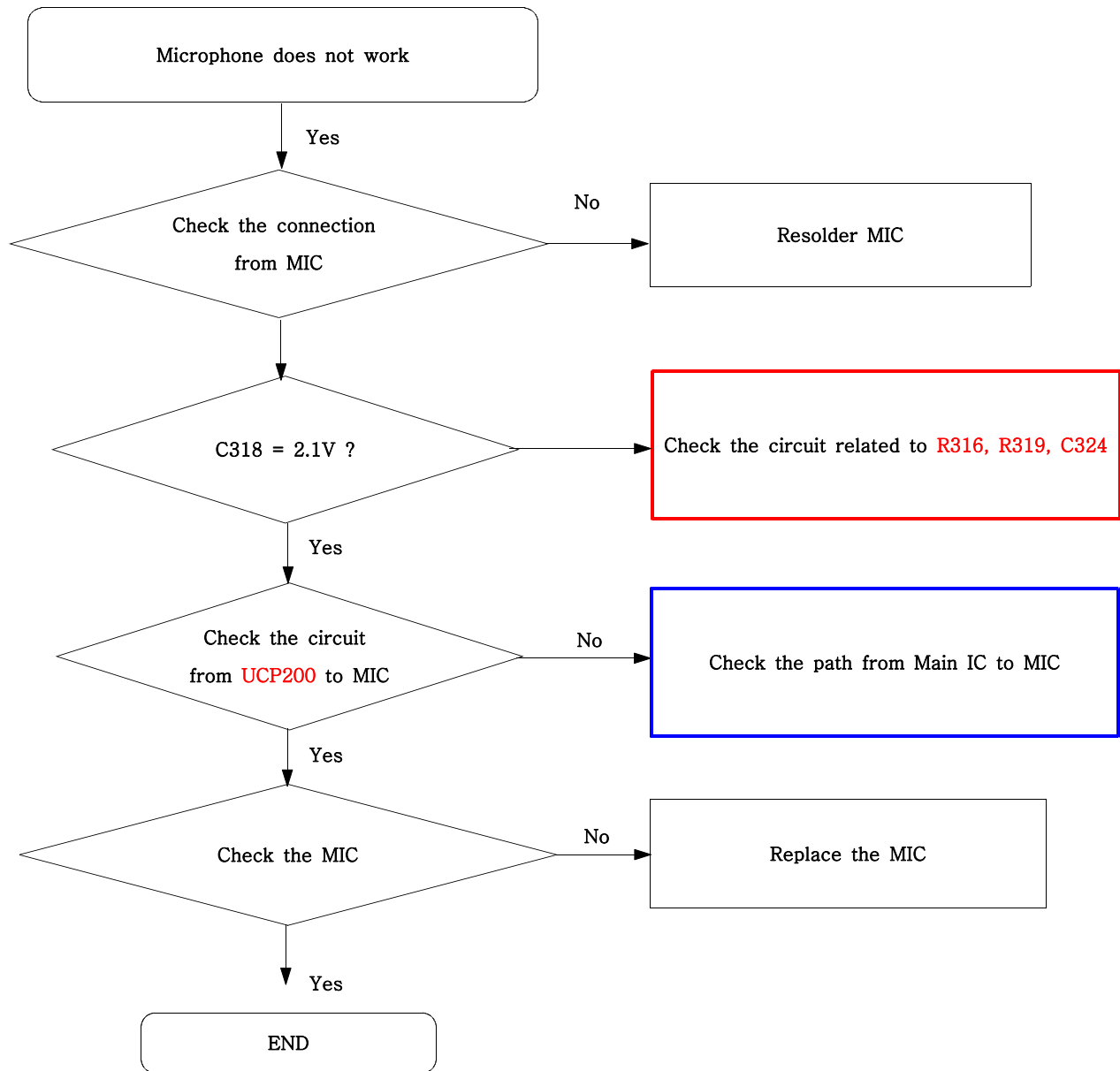
# Flow Chart of Troubleshooting

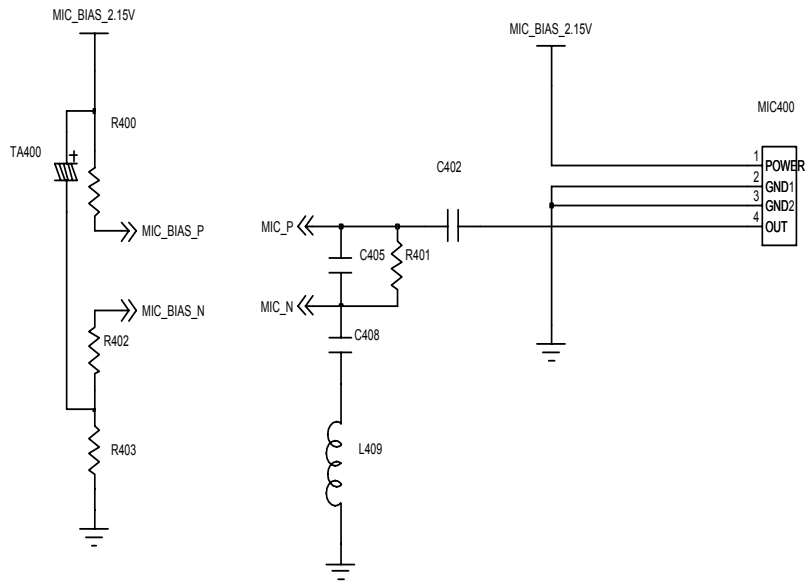
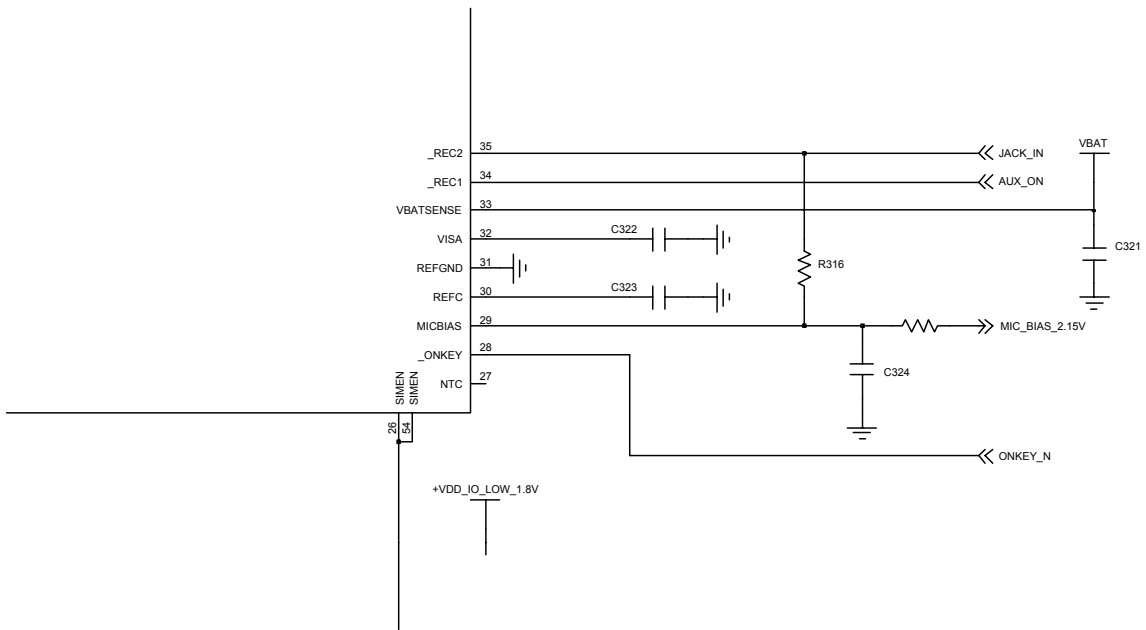




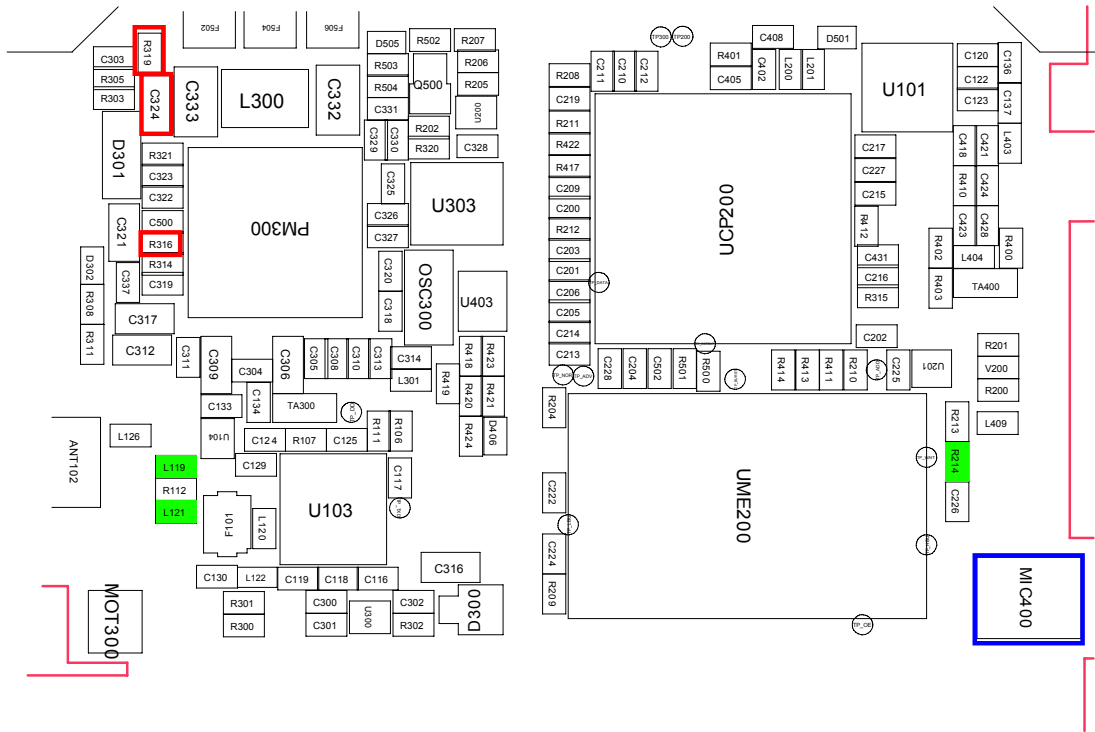


### 9-5. Microphone Part

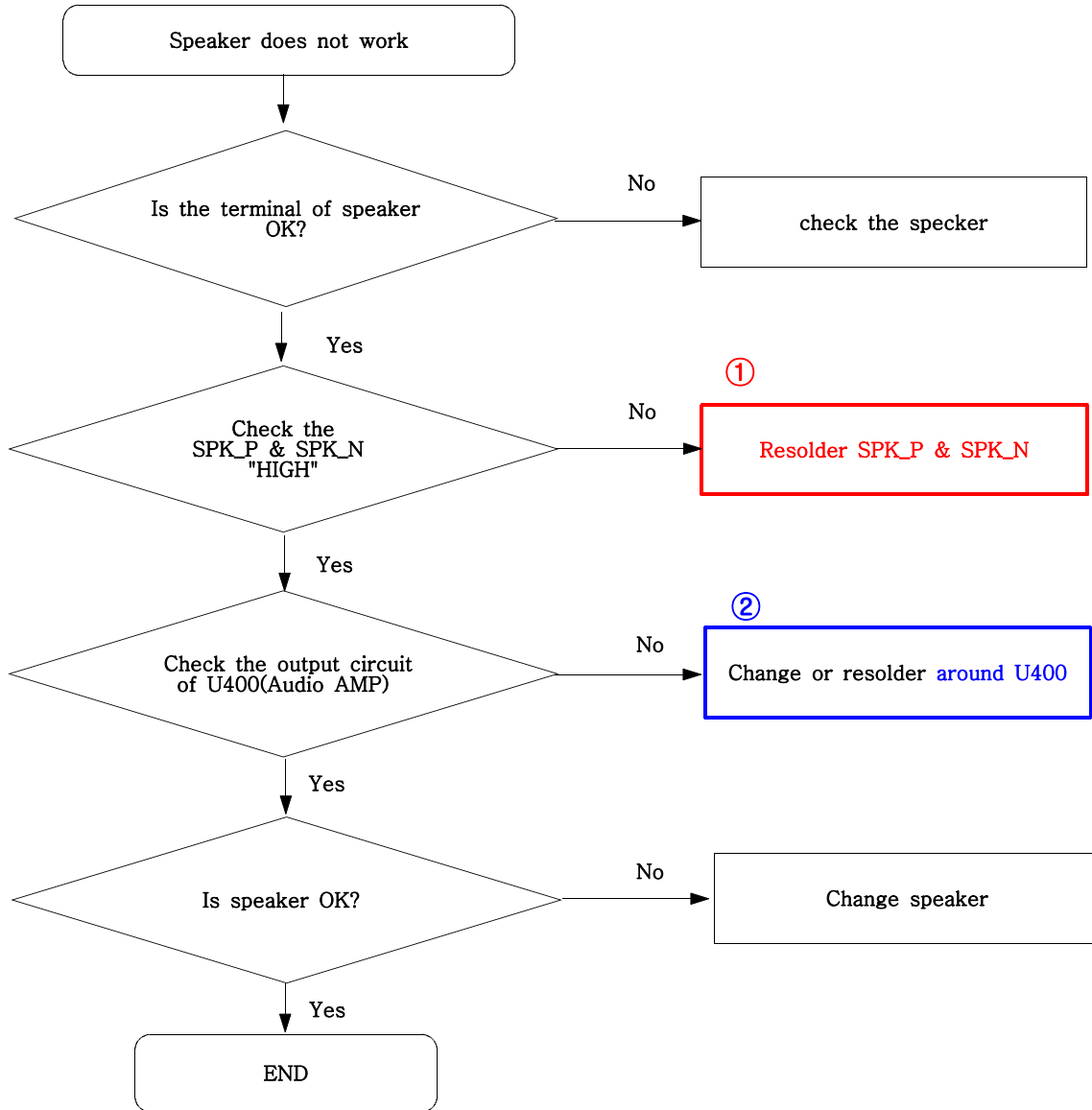


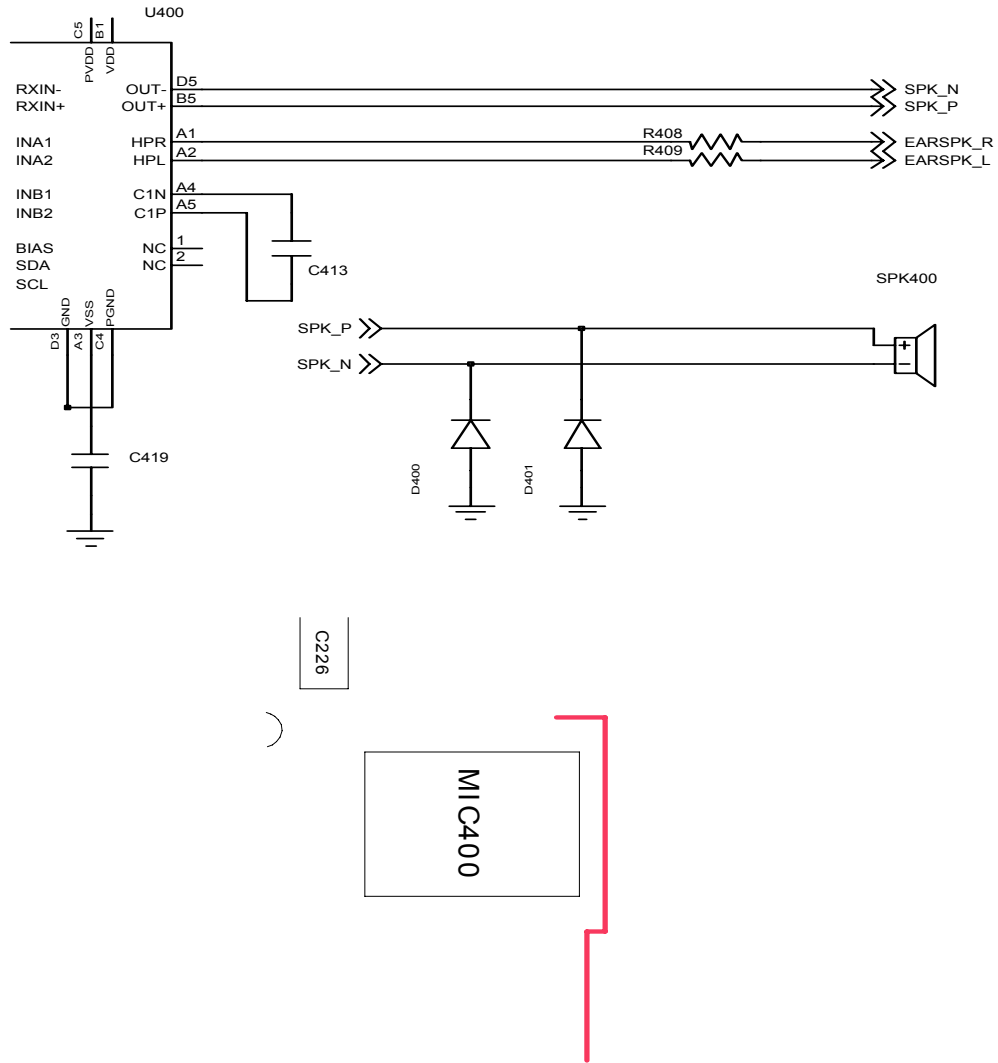


# Flow Chart of Troubleshooting

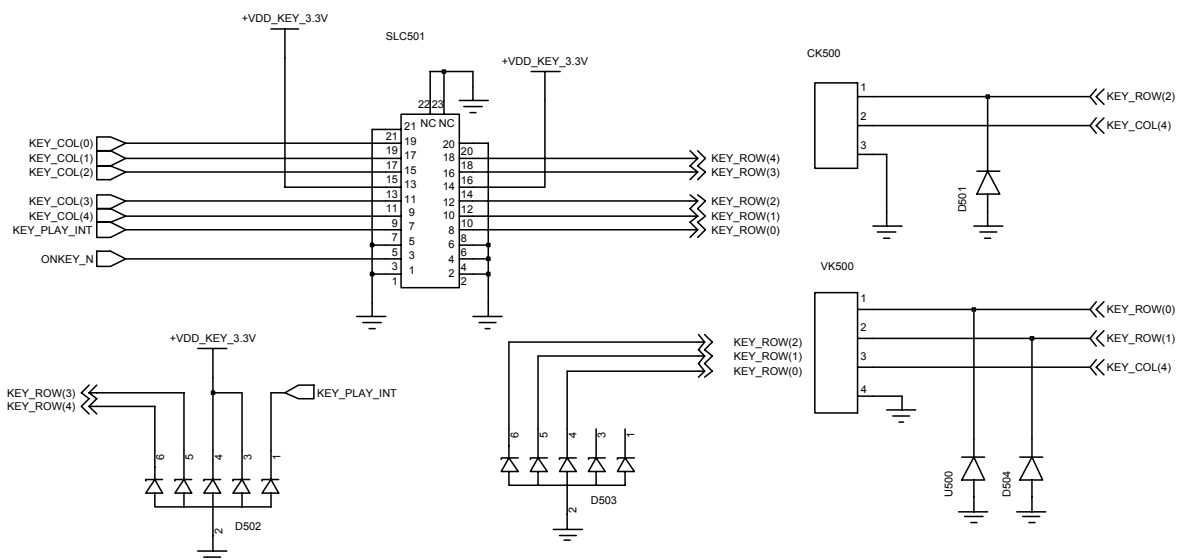
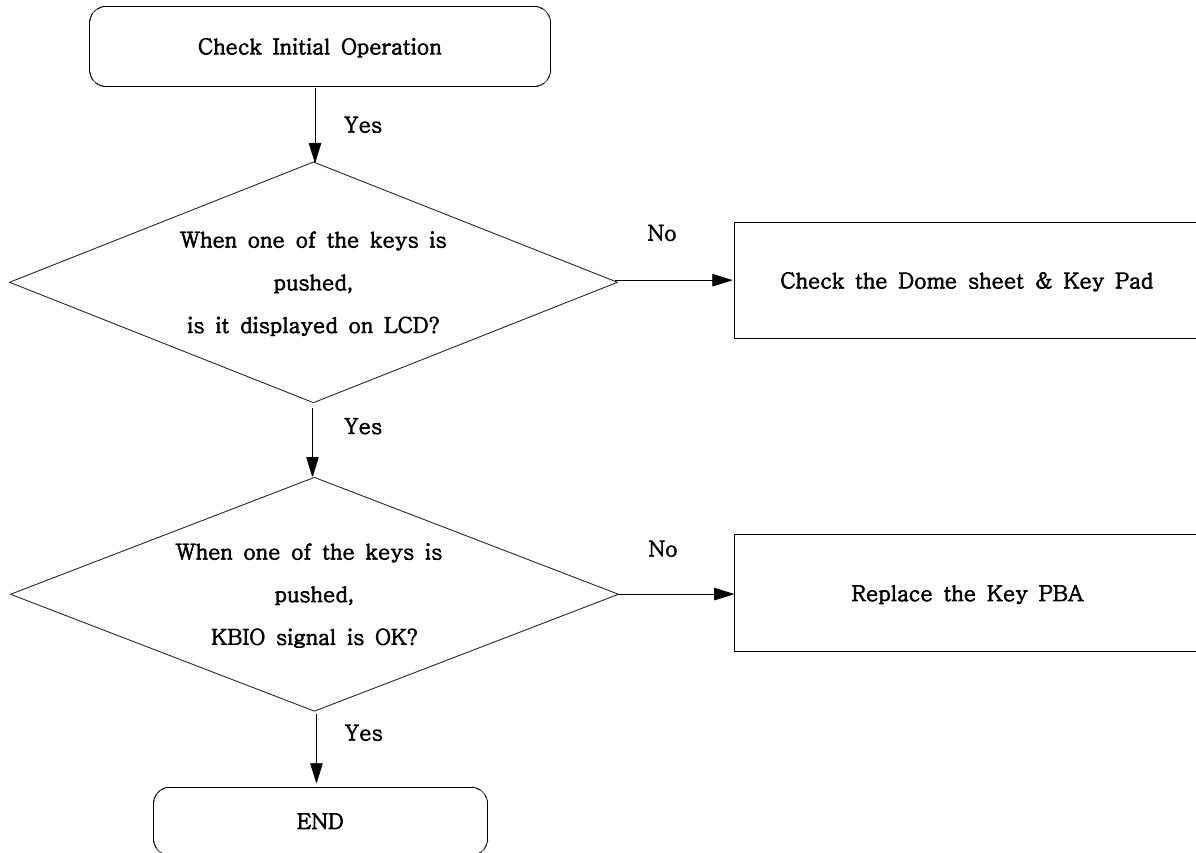


### 9-6. Speaker Part(Melody)

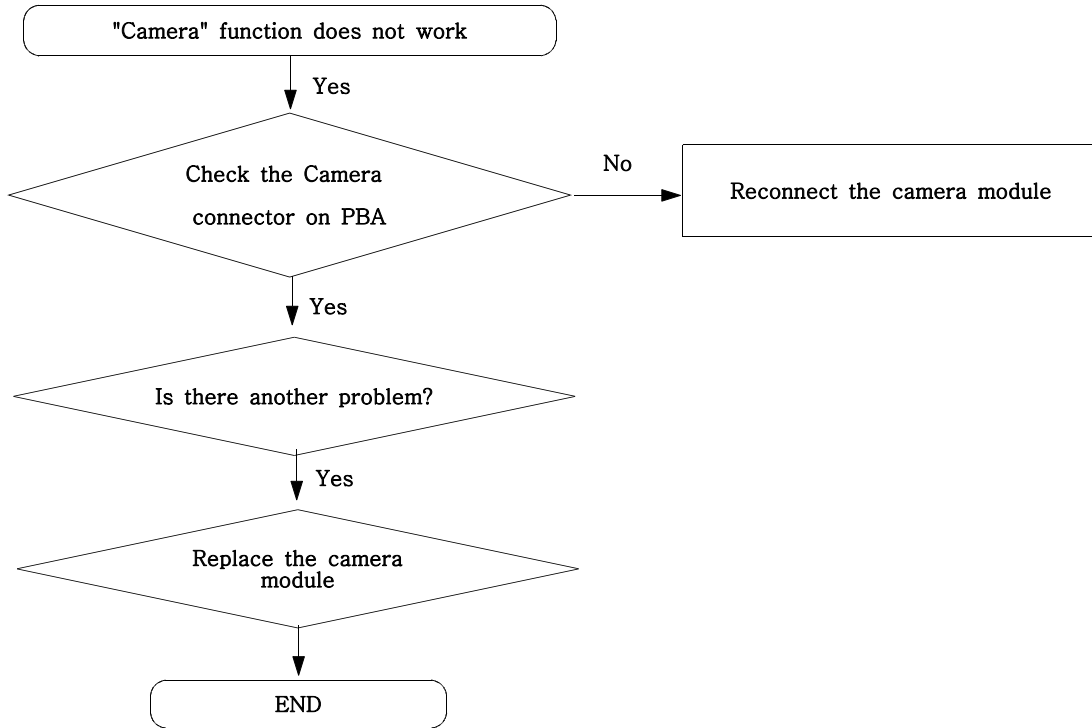




### 9-7. Key Data Input

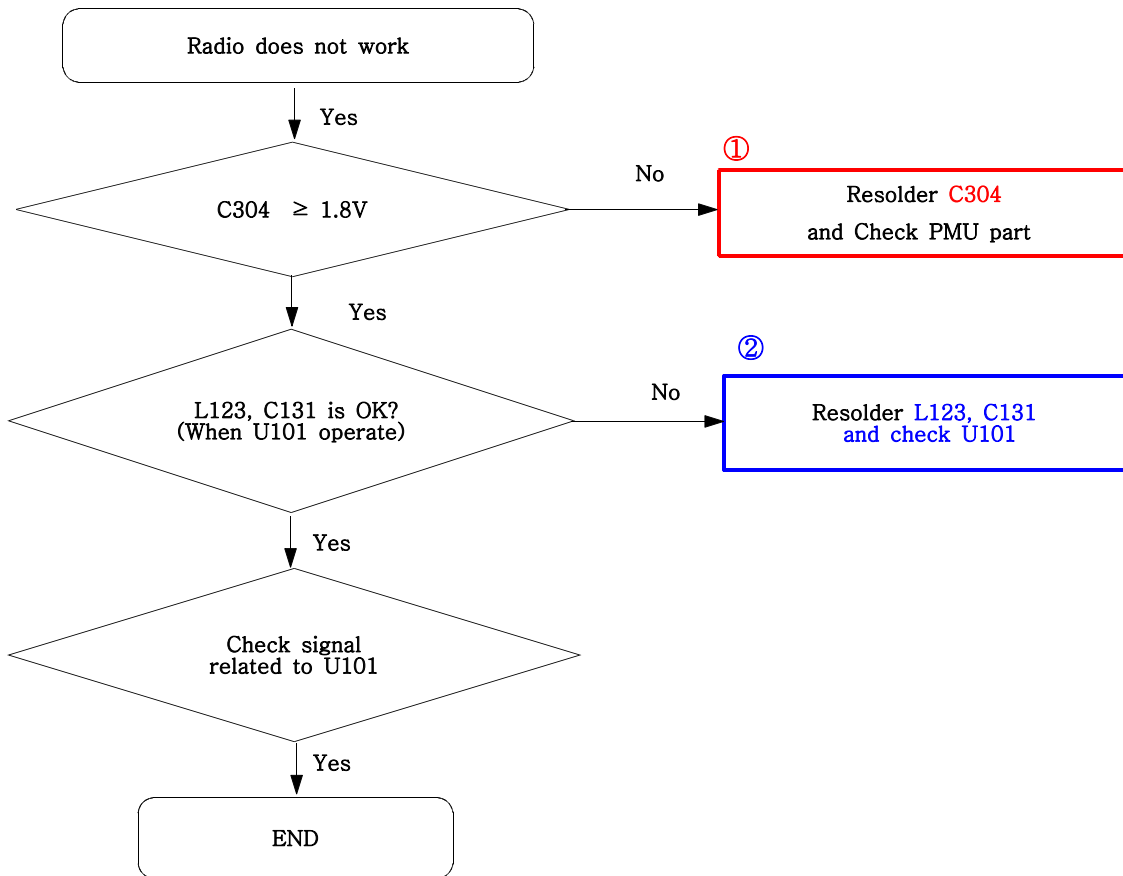


9-8. Camera part

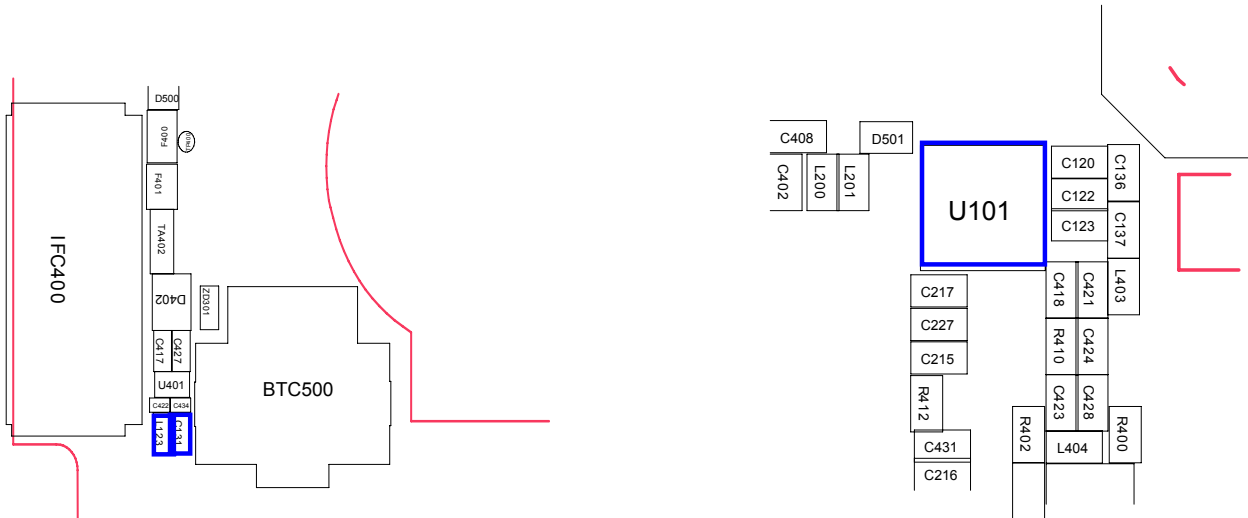
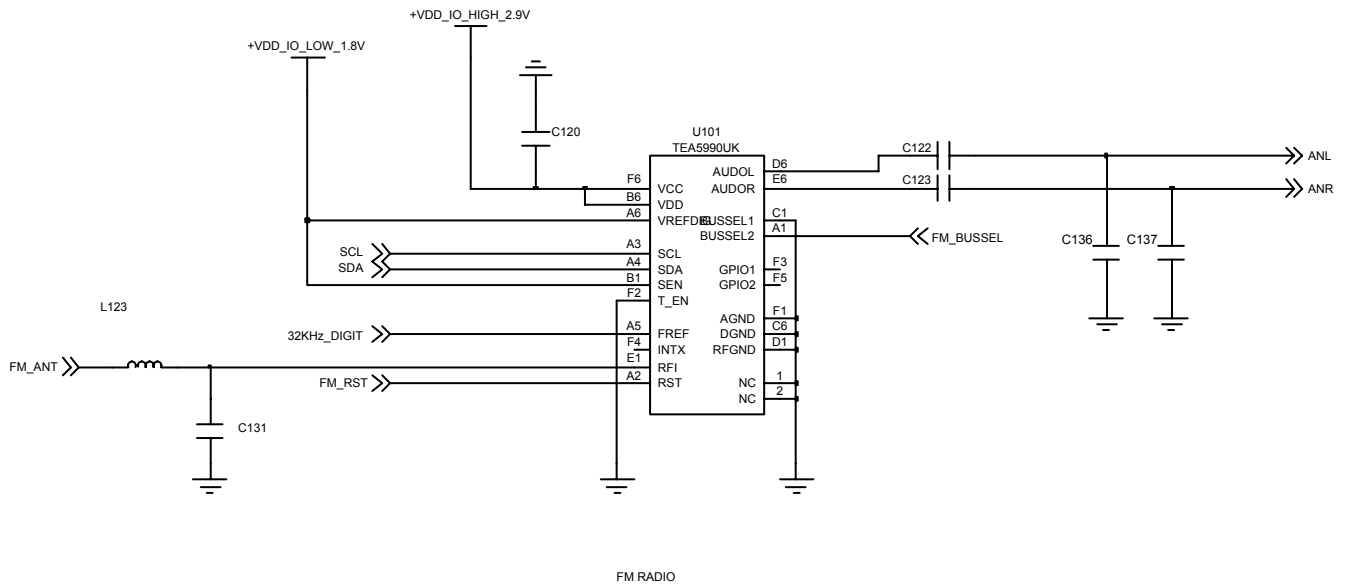




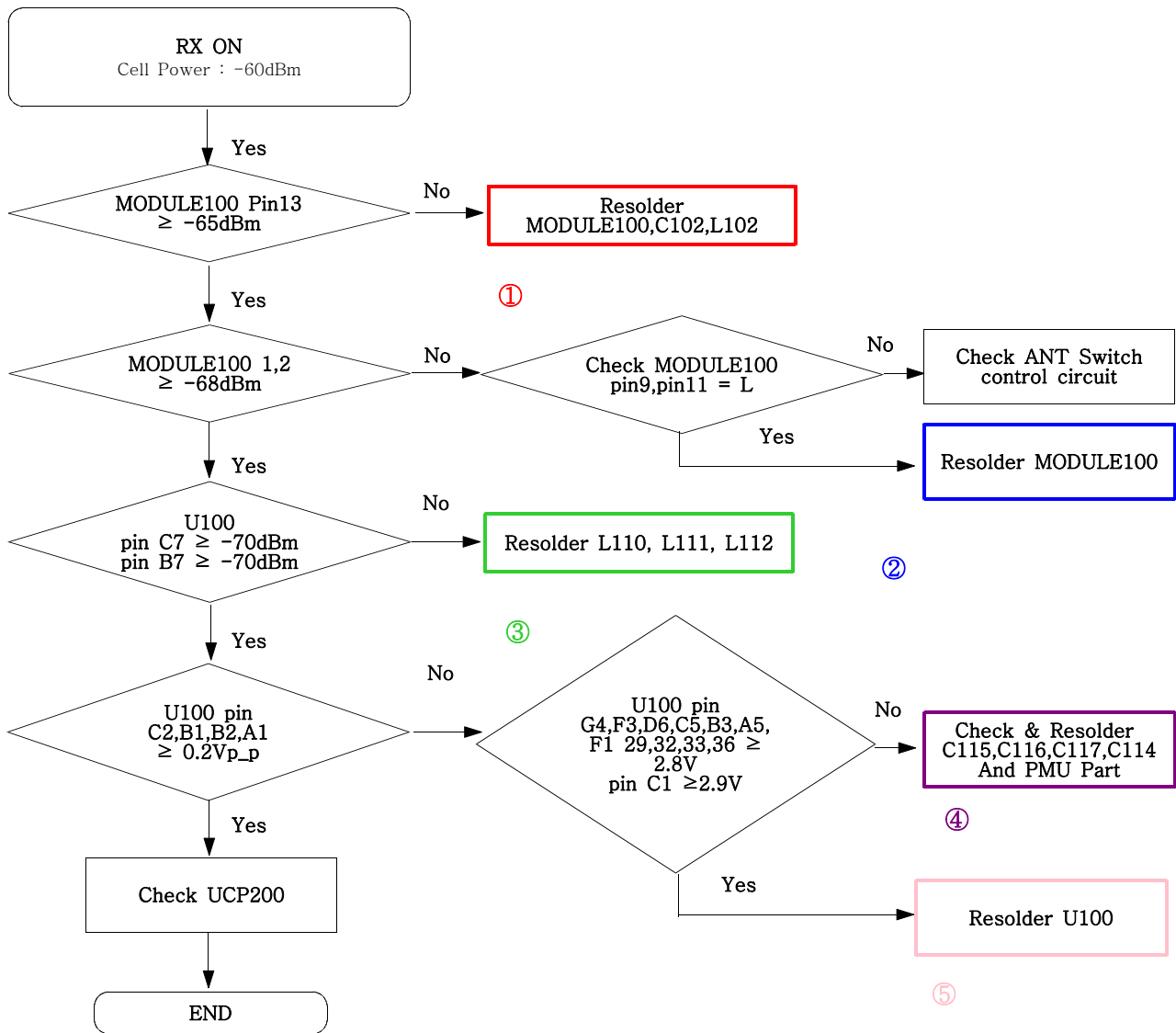
9-9. Radio part



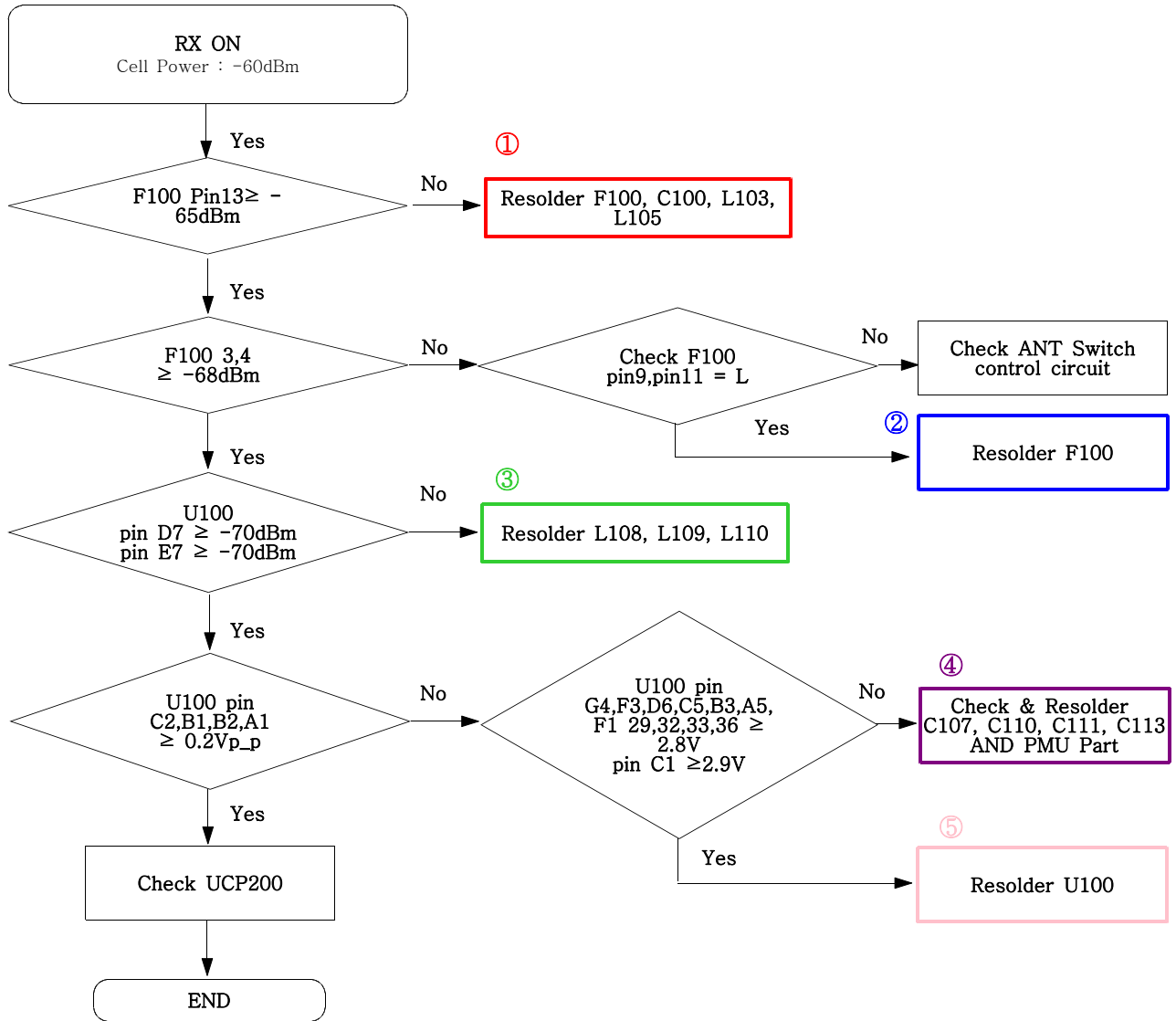
# Flow Chart of Troubleshooting



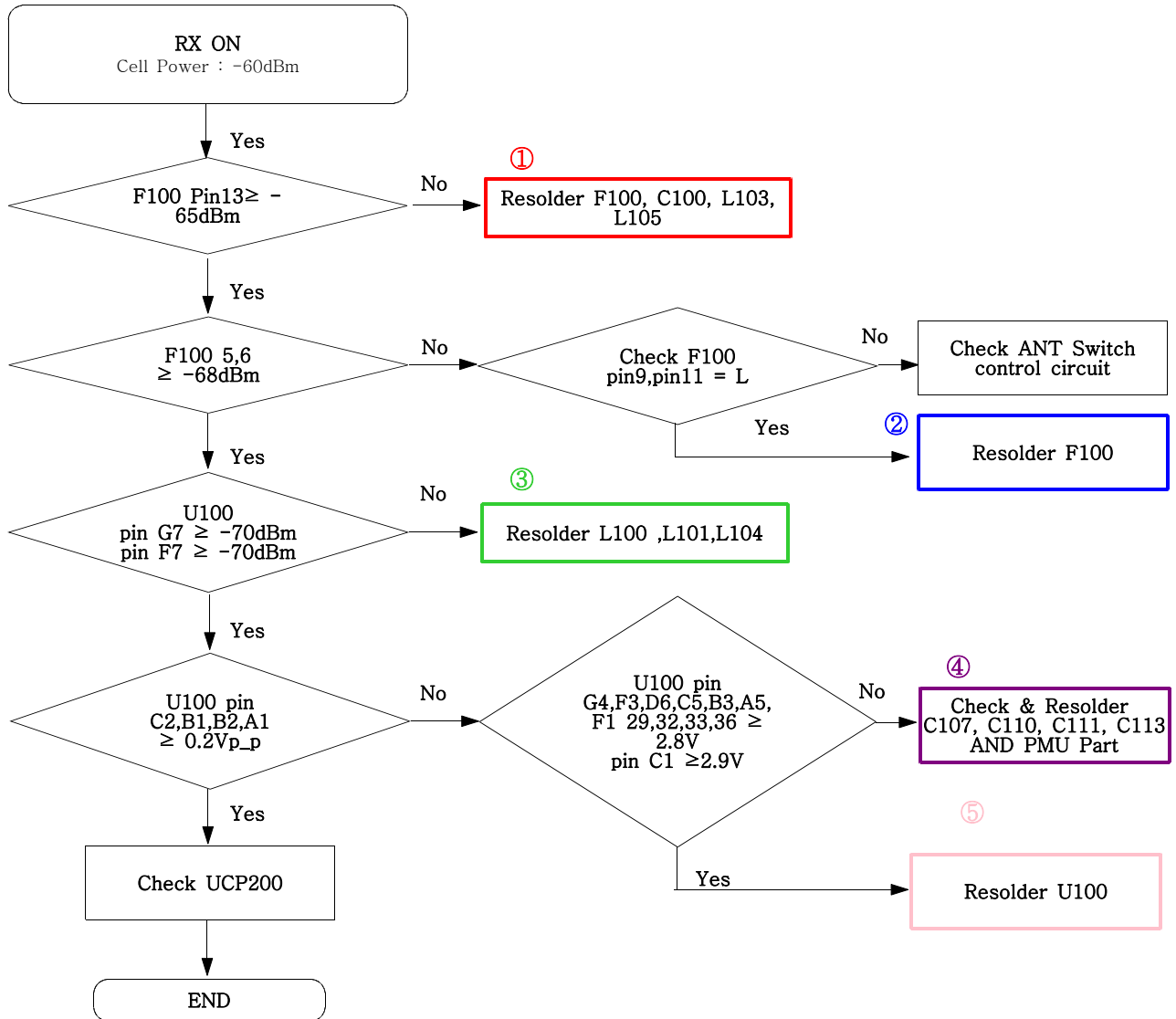
## 9-10. GSM Receiver



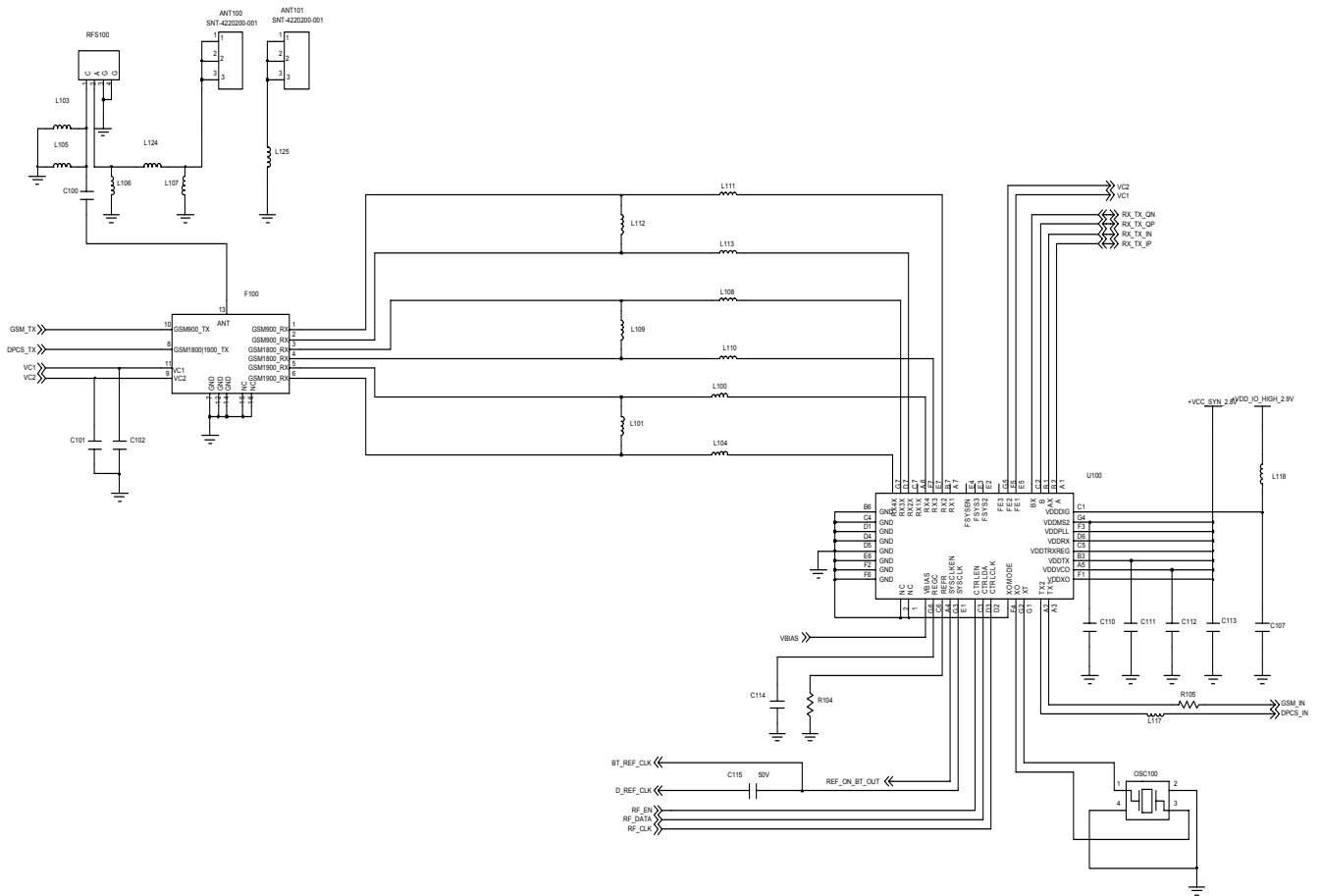
9-11. DCS Receiver

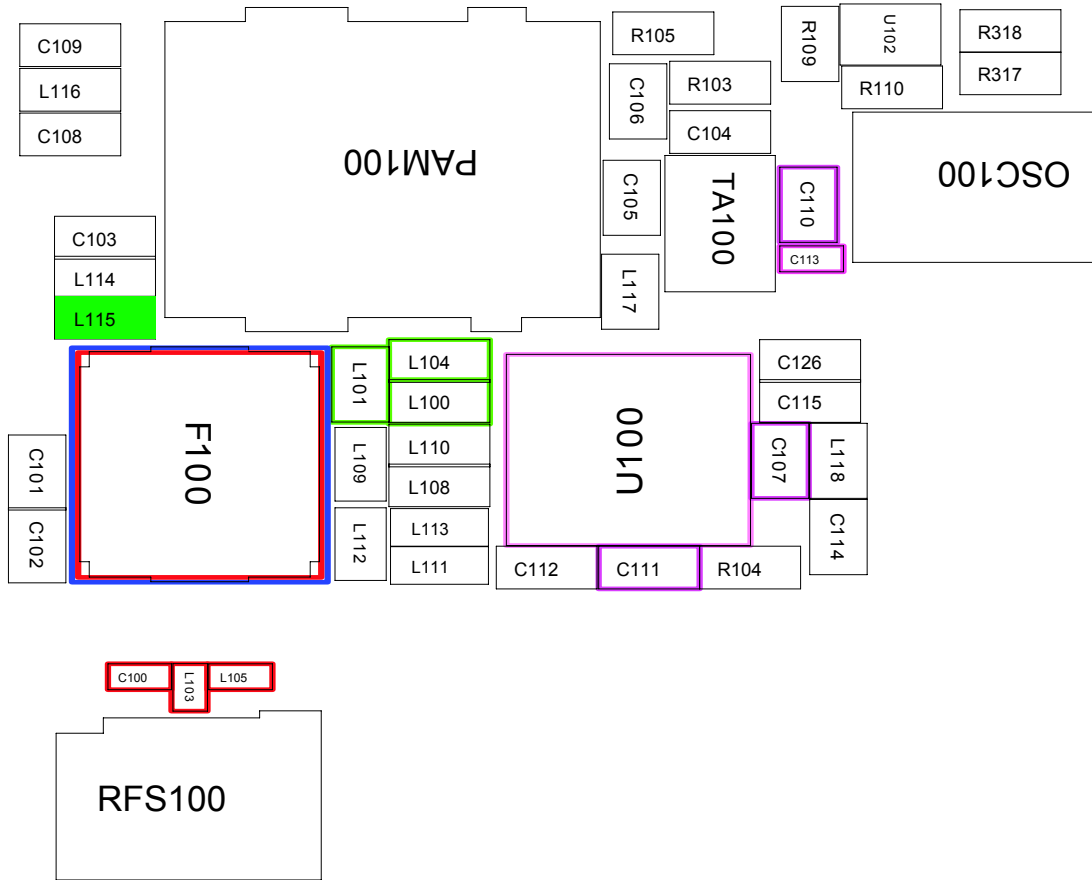


9-12. PCS Receiver

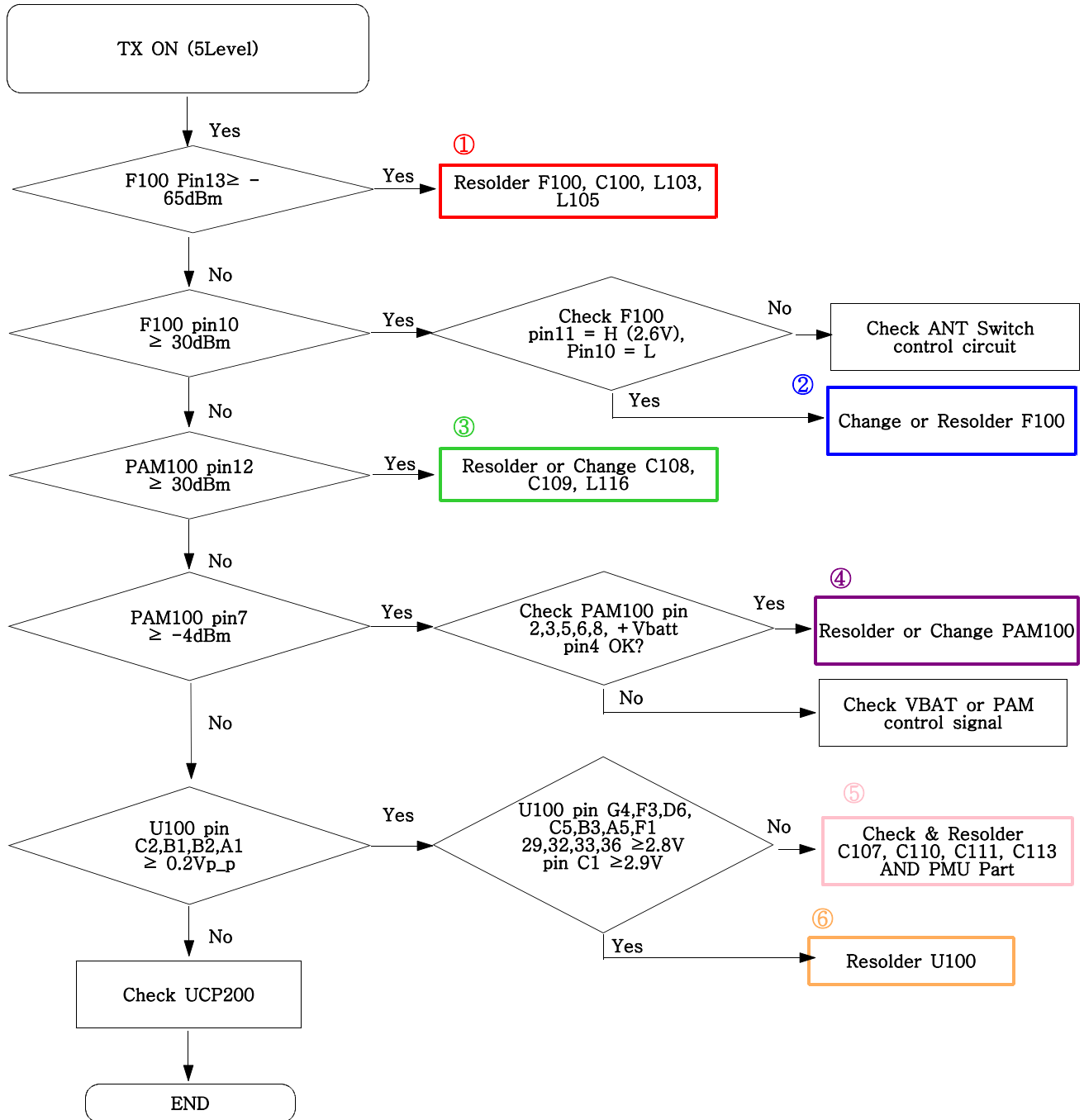


# Flow Chart of Troubleshooting



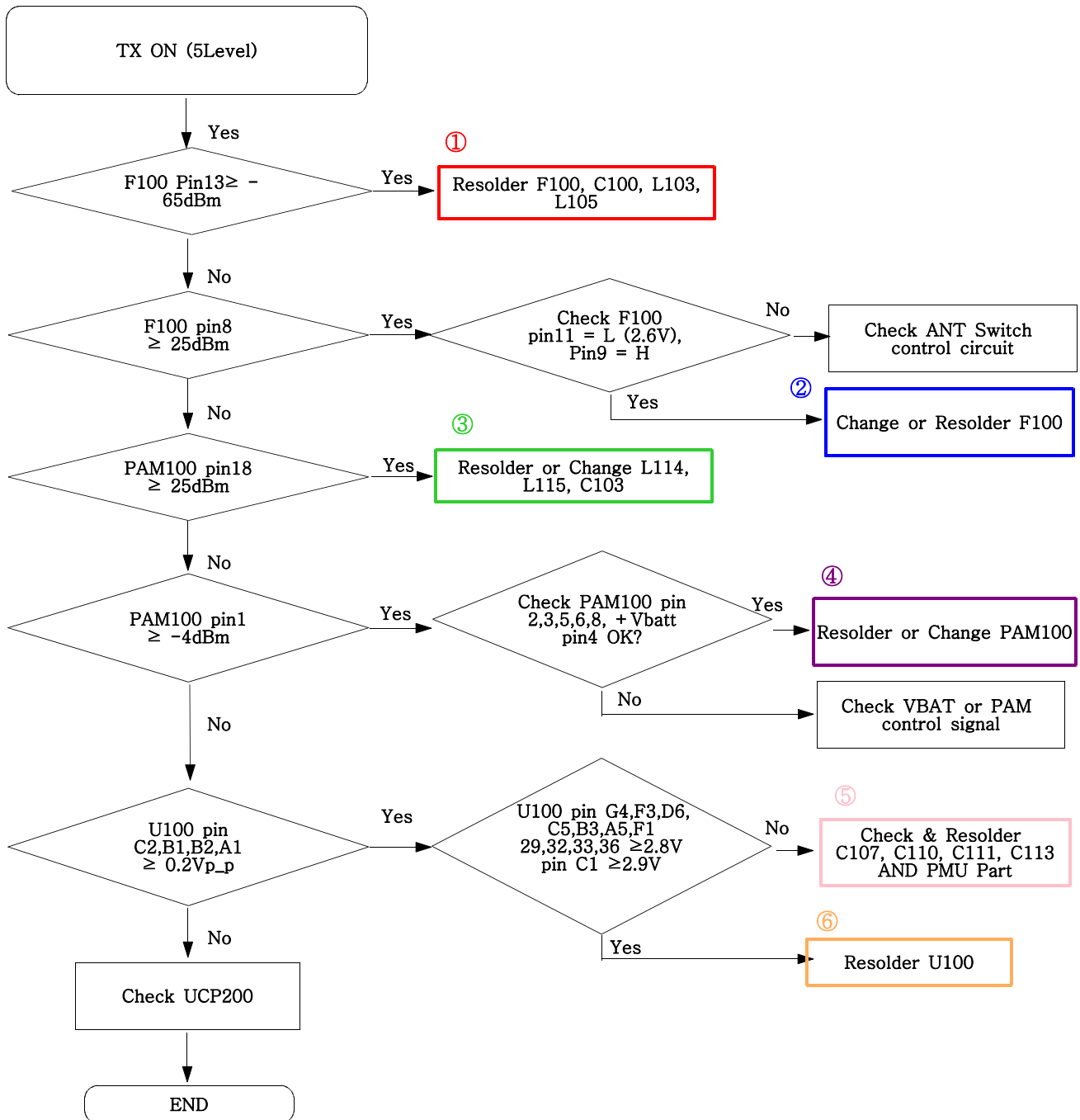


9-13. GSM Transmitter

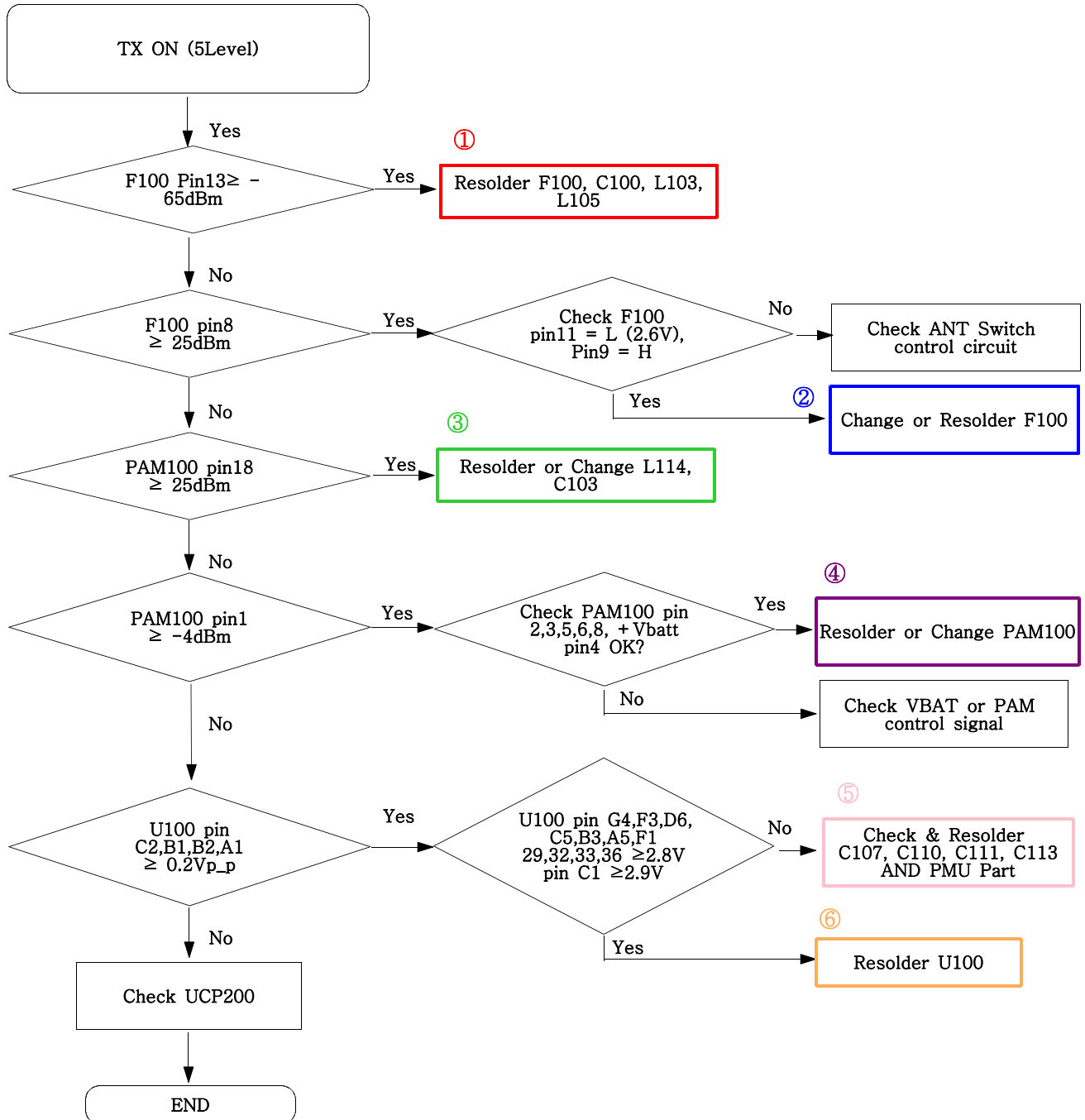


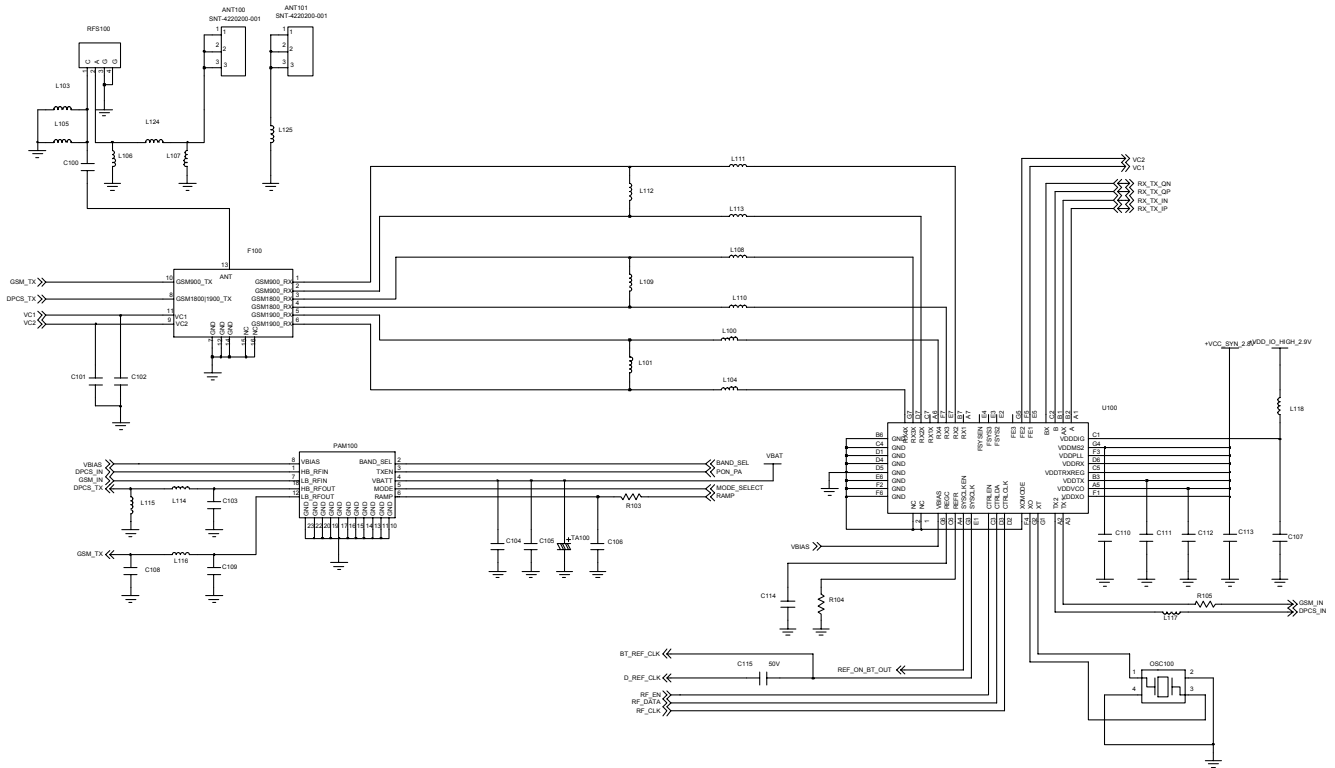


9-14. DCS Transmitter

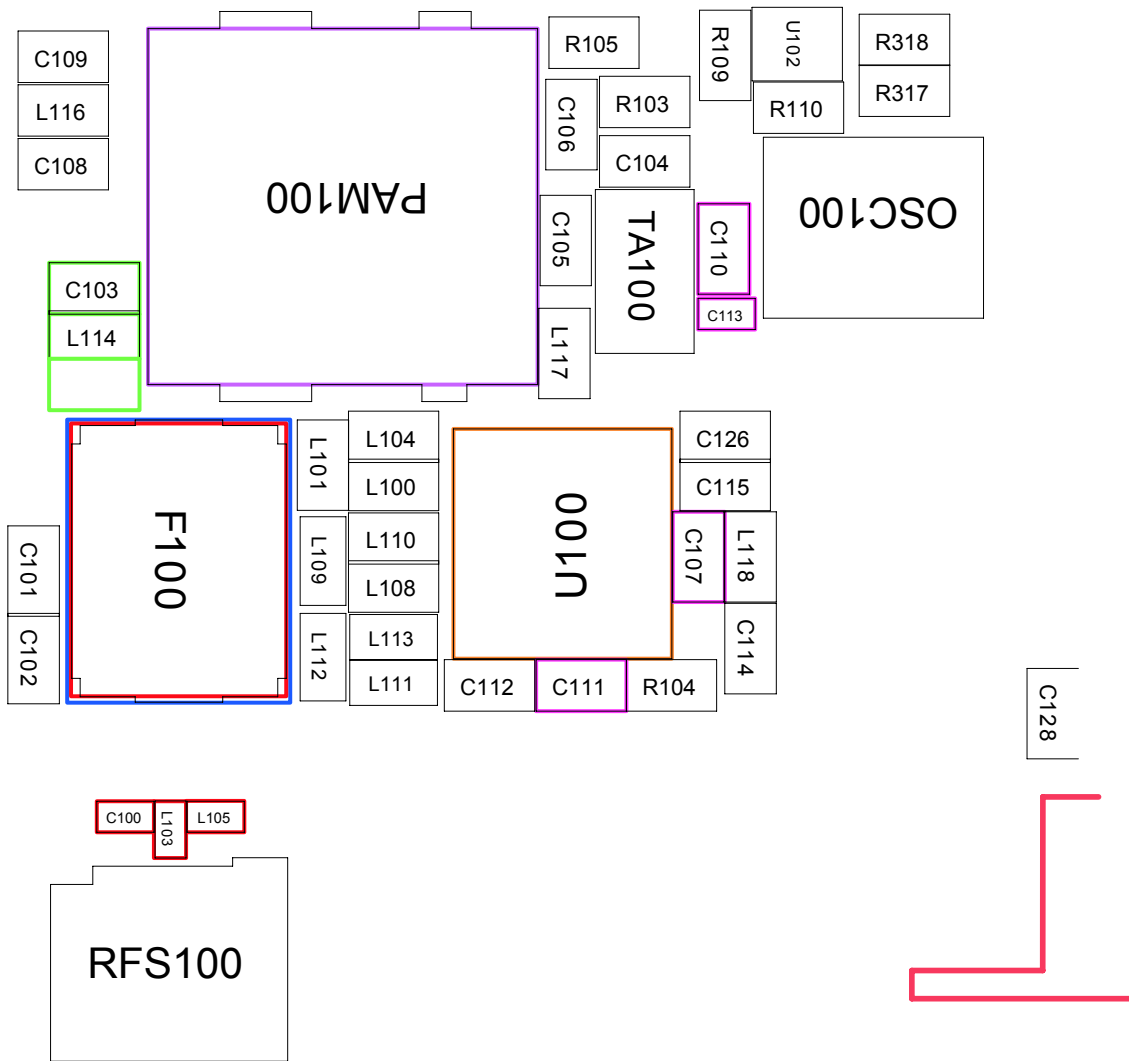


9-15. PCS Transmitter

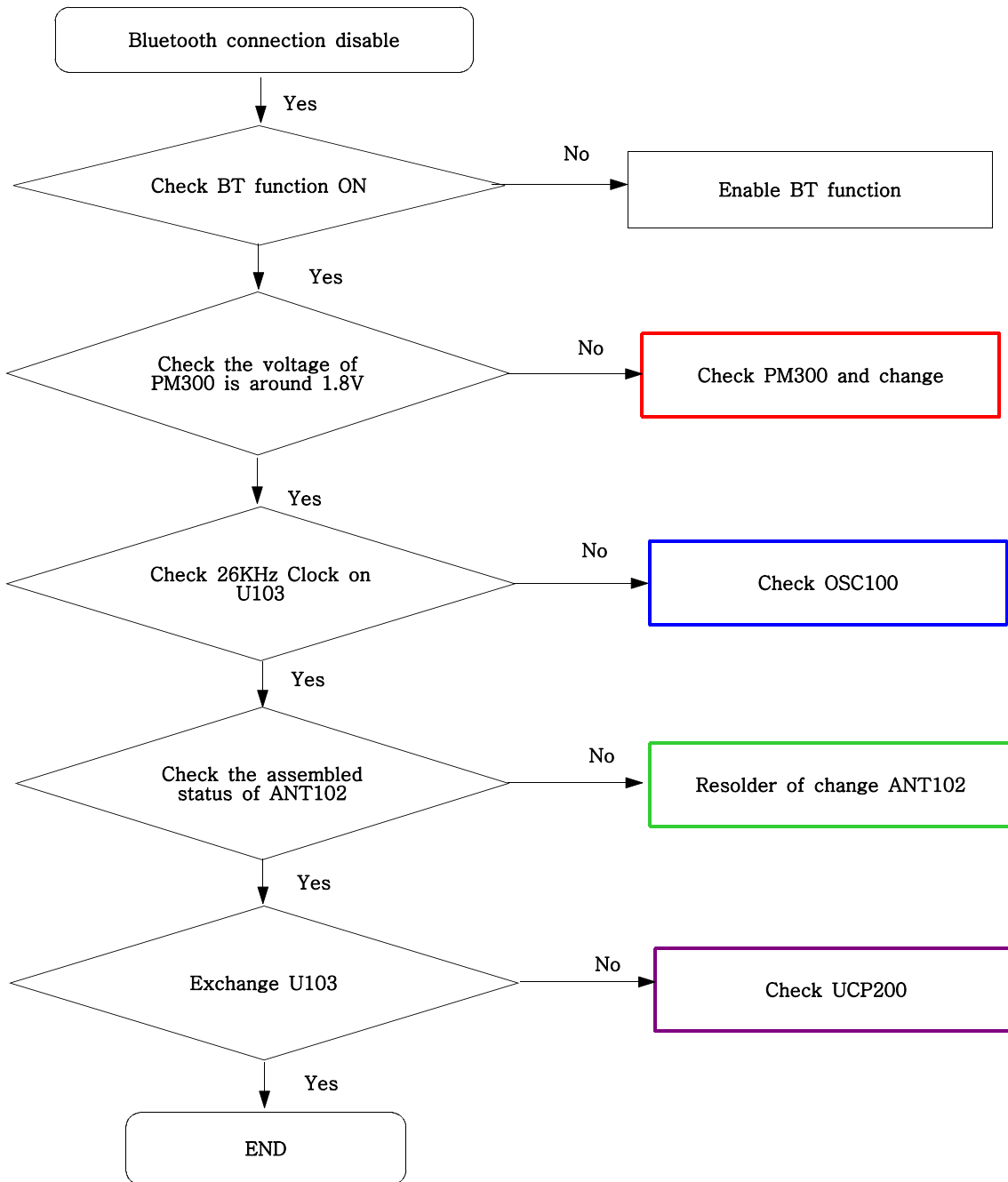




Flow Chart of Troubleshooting



9-16. Bluetooth part



# Flow Chart of Troubleshooting

