



Part List, Mechanical

Applicable for Z200/Z208

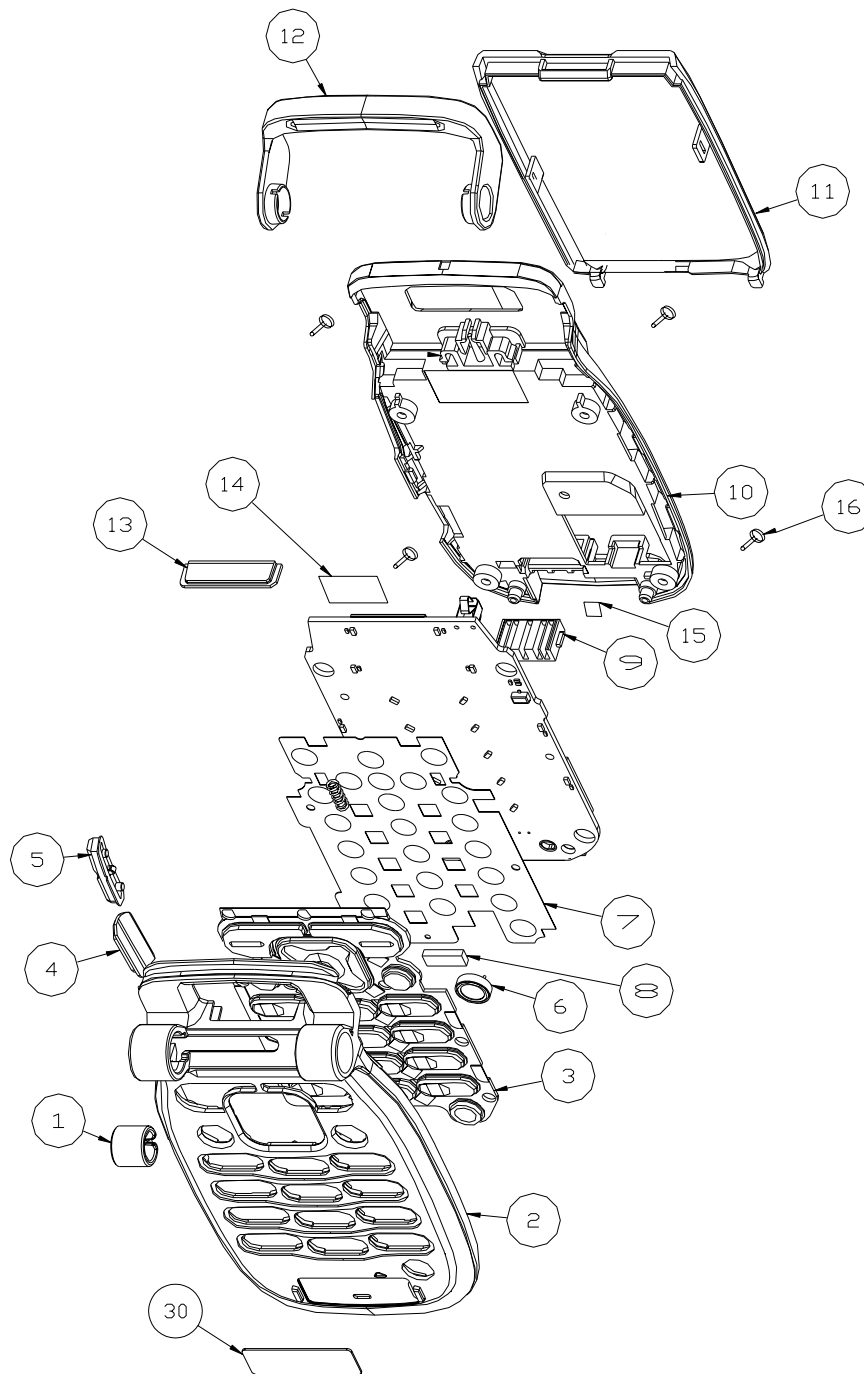
Contents

1	Exploded view Z200	2
1.1	Exploded view Z200 phone, Lower cabinet.....	2
1.2	Exploded view Z200 phone, Upper cabinet.....	3
2	Z200 Parts list	4
3	Label Part List	5
4	Revision History	6



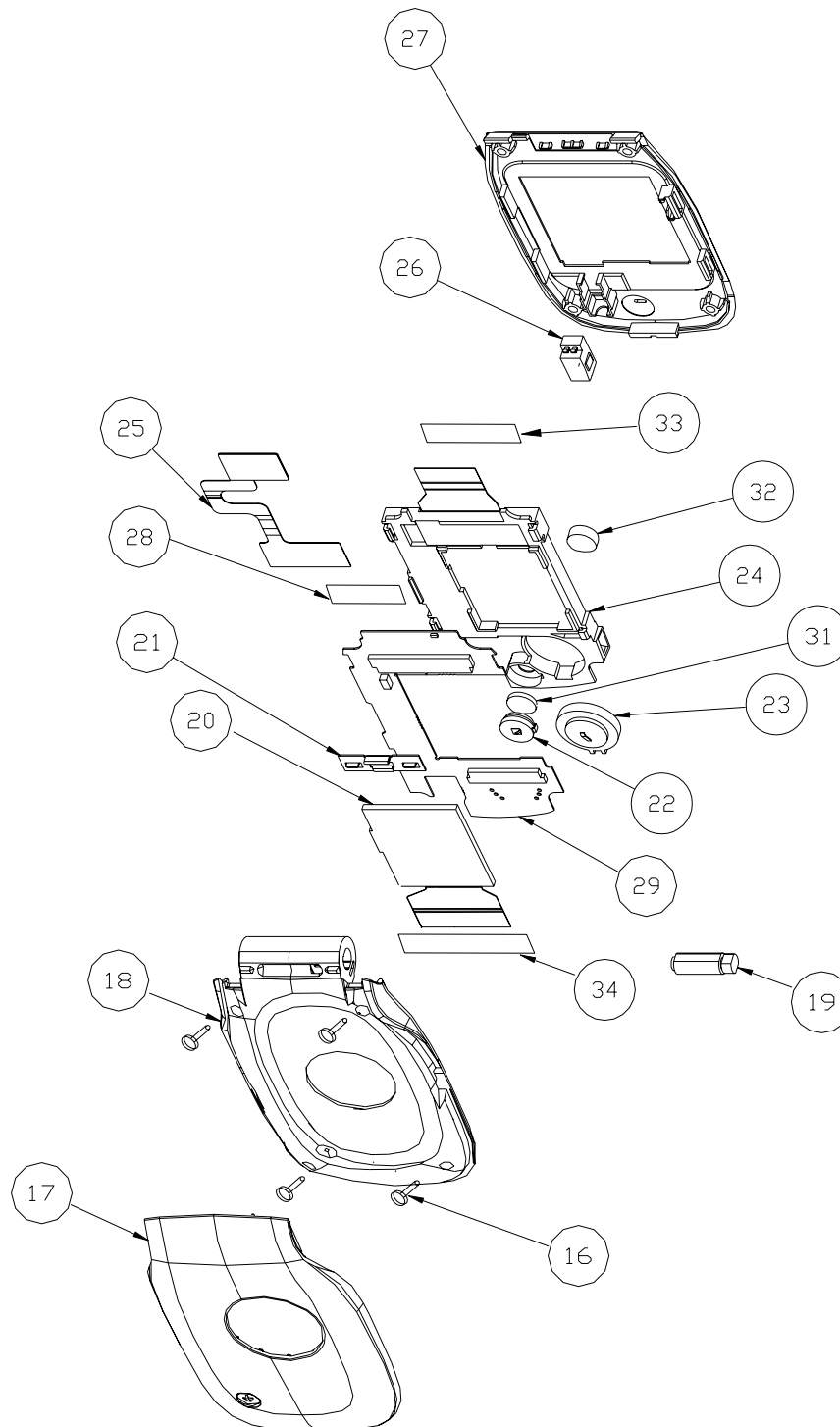
1 Exploded view Z200

1.1 Exploded view Z200 phone, Lower cabinet





1.2 Exploded view Z200 phone, Upper cabinet





2 Z200 Parts list

This part list includes all parts possible to replace by using the Mechanical Repair Process.

Parts available to order will be found in the Web Shop.

Pos. number refers to the Exploded View.

Pos.	Description	Part Number	Comments
1	Hinge Insert	A/20704150000000	
2	Lower Inside Cover Assy/Velvet Blue	A/8CS2220LICK0B	
2	Lower Inside Cover Assy/Frosty White	A/8CS2220LICW90B	
3	Keypad/Chinese/Velvet Blue	A/204E22200A6000	
3	Keypad/Chinese/Frosty White	A/204E22200EZ000	
3	Keypad/Taiwanese/Velvet Blue	A/204E22200A6100	
3	Keypad/Taiwanese/Frosty White	A/204E22200EZ100	
3	Keypad/English/Velvet Blue	A/204E22200A6200	
3	Keypad/English/Frosty White	A/204E22200EZ200	
3	Keypad/Arabic/Velvet Blue	A/204E22200A6300	
3	Keypad/Arabic/Frosty White	A/204E22200EZ300	
3	Keypad/Thai/Velvet Blue	A/204E22200A6600	
3	Keypad/Thai/Frosty White	A/204E22200EZ600	
3	Keypad/Cyrillic/Velvet Blue	A/204E22200A6400	
3	Keypad/Cyrillic/Frosty White	A/204E22200EZ400	
4	IrDA Window	A/203C22200N0100	
5	Sidekey/Velvet Blue	A/206E22200A6000	
5	Sidekey/Frosty White	A/206E22200EZ000	
6	Microphone Assy	A/1120258422690D	
7	Dome Foil	A/20801110001300	
8	Conductive Cushion	A/20804200000400	
9	Battery Connector	A/11404405018451	
10	Rear Cover Assy/Velvet Blue	A/8RAC-2220-LKAA	
10	Rear Cover Assy/Frosty White	A/8RAC-2220-W9AA	
11	Battery Cover/Velvet Blue	A/205A22200LK000	
11	Battery Cover/Frosty White	A/205A22200WZ100	
12	Antenna/Hinge Cover	A/205A22200SZ100	
13	Top Cover/Velvet Blue	A/205A22200LZ000	
13	Top Cover/Frosty White	A/205A22200WZ000	
14	Conductive Copper Film (BTB)	A/20709160000200	
15	Water Damage Indicator	A/278222000I0000	
16	Screw	A/20932163035D00	



Pos.	Description	Part Number	Comments
17	Exchange Cover/Velvet Blue	A/8FNC-2220-LKAB	
17	Exchange Cover/Frosty White	A/8FNC-2220-WZAB	
17	Exchange Cover/Silver	A/81KC-2220SZ-AB	
17	Exchange Cover/Red	A/81KC-2220RZ-AB	
18	Upper Outside Cover Assy/Velvet Blue	A/8FNC-2220-LK1A	
18	Upper Outside Cover Assy/Frosty White	A/8FNC-2220-W91A	
19	Hinge Mechanism	A/2070414000000	
20	Sub Display (Wintec)	A/1270416352600B	
20	Sub Display (Arima)	A/12704162218060	
21	Flexfilm Plate	A/2070906000000	
22	Earphone Assy	A/11308C3200021E	
23	Loudspeaker Assy (Polyphonic)	A/11315608005286	
24	Main Display Assy (Wintec)	A/8CS2220MDAHU0B	
24	Main Display Assy (Arima)	A/8-2220-00HU0-B	
25	Flexfilm (BTB to FPC)	A/1213200P0440A7	
26	Vibrator Assy	A/12000030010275	
27	Upper Inside Cover Assy/Velvet Blue	A/8FNC-2220-LKAA	
27	Upper Inside Cover Assy/Frosty White	A/8FNC-2220-W9AA	
28	Tape/Zif Connector	A/20806020000200	
29	Upper PCB Assy	A/8-2220-00HU1-B	
30	Nameplate/Blank	A/271222002SZ000	
30	Nameplate/Virgin	A/271222002SZ500	
30	Nameplate/Microcell	A/271222002SZD00	
31	Earphone Gasket	A/20804030001500	
32	Earphone outer Gasket	A/20804030001300	
33	Main Display Gasket	A/20804030004500	
34	Sub LCD Connector Tape	A/20806020000100	

3 Label Part List

Pos.	Description	Part Number	Comments
1	Label Markingplate	A/27822200030100	When ordering a full roll the minimum quantity is 1000 pcs (and NOT 2000 pcs),

4 Revision History

Rev.	Date	Changes / Comments
A	2003-11-13	First release
B	2004-02-04	Changed art.no for "Battery Connector" to the correct one (as in shop) to A/11404405018451
C	2004-03-23	Changed Part number for Vibrator assy to A/12000030010275
D	2004-04-27	Switched part numbers for Loudspeaker Assy (Polyphonic) and Earphone Assy
E	2004-05-07	Nameplates added
F	2004-07-05	Item 31~34 added
G	2004-09-16	Updated part numbers for; Lower Inside Cover Assy/Frosty White, Lower Inside Cover Assy/Velvet Blue, Keypad/Cyrillic/Frosty White, Keypad/Cyrillic/Velvet Blue, Flexfilm (BTB to FPC)
H	2004-10-07	Main Display Assy (Wintec) and Sub Display (Wintec) added.
J	2004-11-26	Changed part no for Irda Window to A/203C22200N0100
K	2004-12-20	FYI (reg Label Markingplate): When ordering a full roll the minimum quantity is 1000 pcs (and NOT 2000 pcs),