

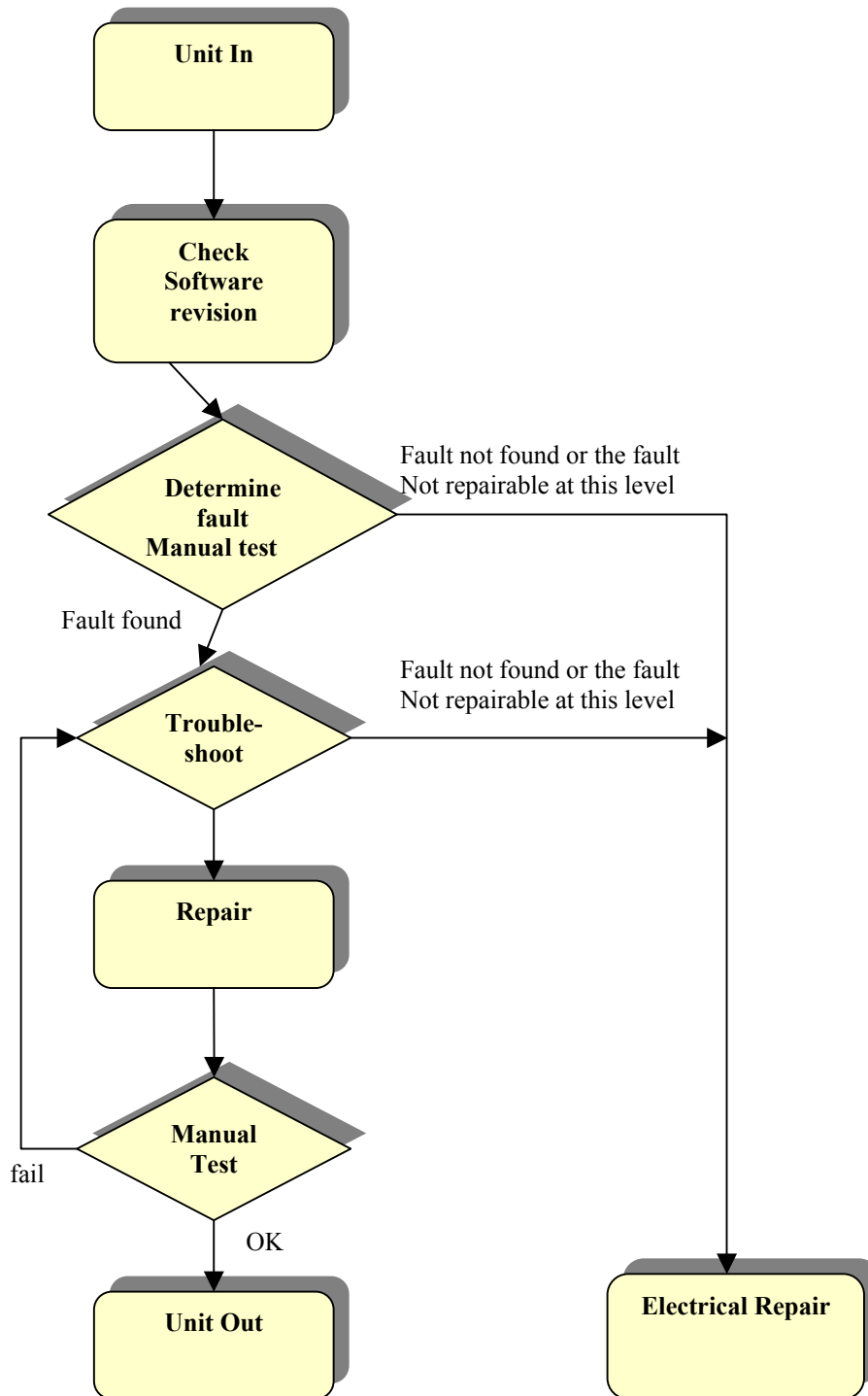


# Process Flow, SP/ Mechanical Repair

Applicable for Z200, Z208

<b>Process Flow</b> .....	<b>2</b>
1.1    Process Flow Description .....	3
<b>2    Process Flow, Label</b> .....	<b>3</b>
2.1    Process Flow label, Description .....	4
<b>3    Revision History</b> .....	<b>5</b>

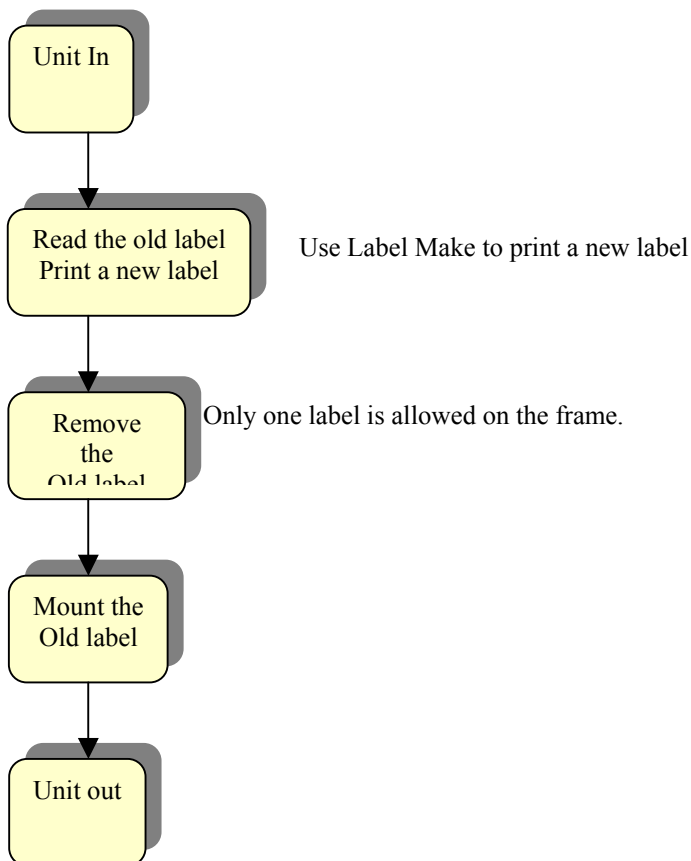
# 1 Process Flow



## 1.1 Process Flow Description

<b>Box</b>	<b>Reference</b>
<b>Flash upgrade (Check software)</b>	<i>Test Instruction, SP/ Mechanical</i> If necessary, update the phone with the latest software revision.
<b>Manual test</b>	<i>Test Instruction, SP/ Mechanical</i> To verify the phone, all test actions must be performed.
<b>Trouble-shoot</b>	<i>Trouble Shooting Guide, SP/ Mechanical</i> Trouble-shoot the phone according to the guide for the most common faults.
<b>Repair</b>	<i>Working Instruction, SP/ Mechanical</i> Repair the faulty phone according to the instruction.

## 2 Process Flow, Label



## 2.1 Process Flow label, Description

<b>Box</b>	<b>Reference</b>
<b>Read the old label</b> <b>Print a new label</b>	In the <b>Label Make</b> program, read the information on the old label and select system, etc. (Use the <b>Help</b> function in <b>Label Make</b> for guidance on how to use the program.) Print a new Label. Continue with <b>Remove old Label</b> .
<b>Remove the old label</b>	<i><b>Working Instructions.</b></i> Remove the old label according to the instructions. Only one label is allowed on the frame. Continue with <b>Mount the new label</b> .
<b>Mount the new label</b>	<i><b>Working Instructions.</b></i> Mount the new label according to the instructions.

### 3 Revision History

<b>Rev.</b>	<b>Date</b>	<b>Changes / Comments</b>
A	2003-11-13	First release