



Working Instruction, Mechanical

Applicable for Z550i, Z550c, Z550a, Z558i & Z558c

CONTENTS

- 1 Introduction 3**
 - 1.1 Equipment.....4**
 - 1.2 General cautions 5**
- 2 Disassembly 6**
 - 2.1 Lower unit 7**
 - 2.1.1 Battery Cover & Battery 8
 - 2.1.2 Screw Covers 9
 - 2.1.3 Lower Outer Cover 10
 - 2.1.4 Speaker Box..... 12
 - 2.1.5 PCBA 13
 - 2.1.6 Keypad 14
 - 2.1.7 Side Ring Strap 15
 - 2.1.8 Side Ring..... 16
 - 2.1.9 Lower Inner Cover 17
 - 2.2 Upper unit 19**
 - 2.2.1 Co-Brand Screw Covers..... 20
 - 2.2.2 Upper Outer Cover 21
 - 2.2.3 Upper Inner Cover 23
- 3 Replacements 25**
 - 3.1 Battery Cover..... 26**
 - 3.2 Screw Covers..... 26**
 - 3.3 Lower Outer Cover 26**
 - 3.4 Speaker Box..... 26**
 - 3.5 Side Ring Strap..... 26**
 - 3.6 Side Ring..... 26**
 - 3.7 Lower Inner Cover 26**
 - 3.8 Co-Brand Screw Covers 27**
 - 3.9 Upper Outer Cover 27**
 - 3.10 Upper Inner Cover 27**
 - 3.11 Dual LCD 28**
 - 3.12 Main FPC 31**
 - 3.13 Camera 34**
 - 3.14 Vibrator & Vibrator Support 36**
 - 3.15 Magnet..... 38**
 - 3.16 Receiver 39**
 - 3.17 Hinge 40**
 - 3.18 Sub Display Window 42**



| | |
|--------------------------------------|-----------|
| 3.19 Electric Cloths | 43 |
| 3.20 Dome Sheet Array | 44 |
| 3.21 System Connector..... | 45 |
| 3.22 Liquid Intrusion Indicator..... | 46 |
| 3.23 Label | 47 |
| 4 Reassembly | 48 |
| 4.1 Upper unit | 49 |
| 4.1.1 Upper Inner Cover..... | 50 |
| 4.1.2 Lower Inner Cover..... | 51 |
| 4.1.3 Upper Outer Cover..... | 53 |
| 4.1.4 Co-Brand Screw Covers..... | 54 |
| 4.2 Lower unit | 55 |
| 4.2.1 Side Ring..... | 56 |
| 4.2.2 Side Ring Strap..... | 57 |
| 4.2.3 Keypad..... | 58 |
| 4.2.4 PBA..... | 59 |
| 4.2.5 Speaker Box..... | 60 |
| 4.2.6 Lower Outer Cover..... | 61 |
| 4.2.7 Screw Covers..... | 62 |
| 4.2.8 Battery & Battery Cover..... | 63 |
| 5 Revision history | 64 |

1 Introduction

Z550



1.1 Equipment

SPECIAL TOOLS

- NTZ 122 459 Torque screwdriver (or equivalent)
- NTZ 122 288 Torx bit no. 6
- NTZ 112 1067 Mega camera removal tool
- NTZ 122 521 Flex film assembly tool
- NTZ 112 302/2 Front opening tool



STANDARD TOOLS

Standard tools have to be locally purchased

- Dentist hook
- Blunt pair of tweezers
- Guitar pick



ESD EQUIPMENT

Protect the phone from ESD damages whenever it has been opened by using:

- ESD-wristband
- ESD-gloves



LABEL EQUIPMENT

The following special equipment is required when replacing or installing a new label:

- Hot air flow solder station
- Zebra printer connected to computer



1.2 General cautions

The following cautions are considered to be generic for all phone models and will not be repeated in the Disassembly, Replacements and Reassembly sections:

- **KEEP ALL CONTACT SURFACES CLEAN!**
- **BE CAREFUL WHEN USING TOOLS LIKE THE DENTIST HOOK, TWEEZERS, OPENING TOOLS, GUITAR PICK ETC. TO AVOID SCRATCHES OR DAMAGES TO THE EXTERIOR AND INTERIOR PARTS OF THE PHONE!**
- **BE CAREFUL NOT TO DAMAGE ANY CONTACT SPRINGS!**
- **REMEMBER TO REMOVE THE PROTECTION FOILS ON NEW PARTS SUCH AS THE LCD!**
- **NEVER TOUCH THE DISPLAY GLASS!**
- **USE AIR BLOW EQUIPMENT TO KEEP THE FRONT WINDOW AND DISPLAY MODULE DUST FREE!**

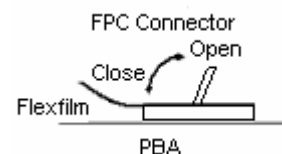
Press the On/Off button to turn off the phone.



How to open a board-to-board connector with the front opening tool.

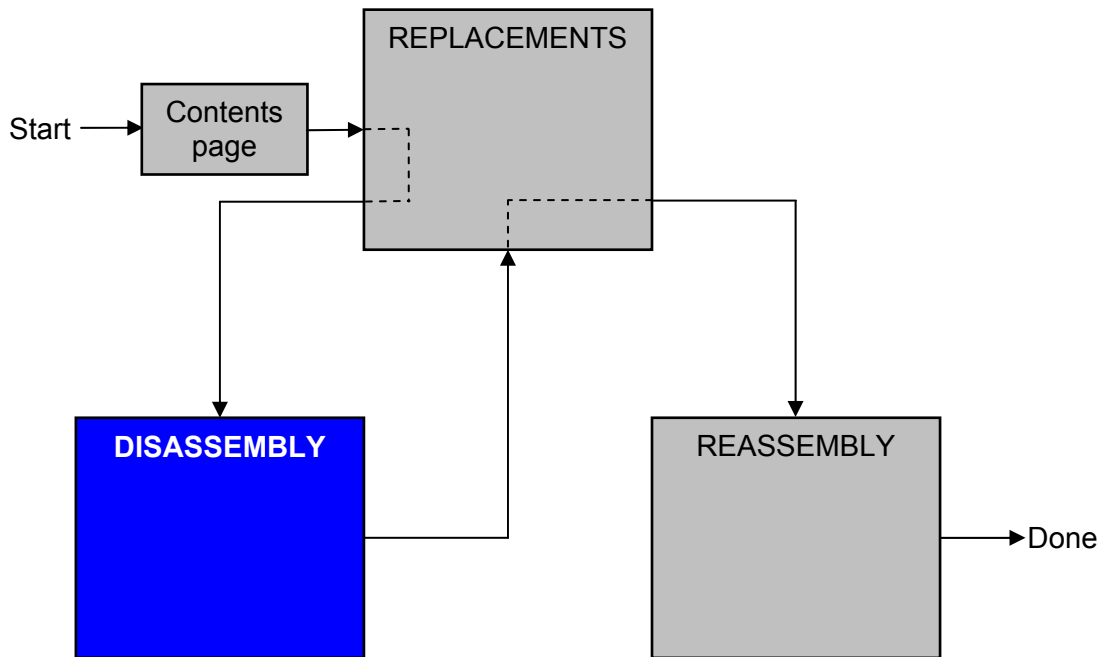


How to open and close a FPC connector.



2 Disassembly

When you are going to replace a part being listed in *Replacements*, the instruction of that section usually begins by directing you to this *Disassembly* section with a specification of the instructions you have to carry out in order to disassemble the phone as far as needed before returning to *Replacements* for the actual replacement.



2.1 Lower unit

The disassembly is done in the following order:

1. Battery Cover (a) & Battery (b)
2. Screw Covers (not to be reused)
3. Lower Outer Cover
4. Speaker Box
5. PCBA
6. Keypad
7. Side Ring Strap
8. Side Ring
9. Lower Inner Cover



2.1.1 Battery Cover & Battery

Press on top of the *battery cover* and push it forward to open up a gap,



and slide it until it becomes released and can be removed.



Put your finger here,



to raise and remove the *battery*.



2.1.2 Screw Covers

Carefully insert the dentist hook under one of the screw covers to have it detached and then removed.

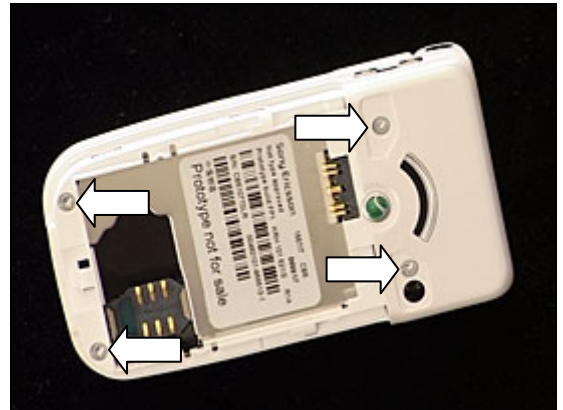
Do the same with the second screw cover.

THE SCREW COVERS CANNOT BE REUSED AND MUST BE SCRAPPED!

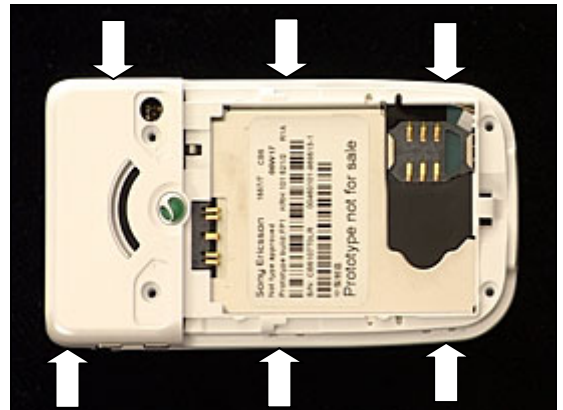


2.1.3 Lower Outer Cover

Use torx bit no. 6 to remove these four screws.



There are six snap hooks located here that have to be unlatched.



Insert the guitar pick as shown in picture and slide it along this side towards the hinge to unlatch the three snap hooks. If necessary, slide back and forth until all three hooks are unlatched.

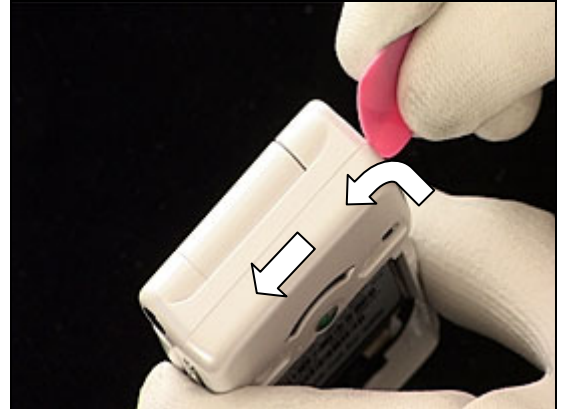


Do the same on the opposite side.

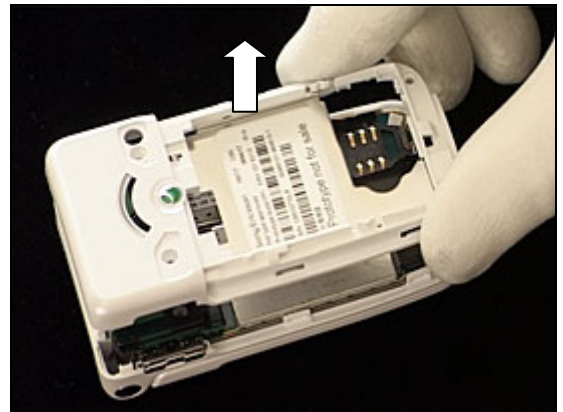


Lower Outer Cover *continued*

Insert the guitar pick at the position of the hinge (as shown in picture) and slide it round the corner towards the opposite corner to open up a gap.

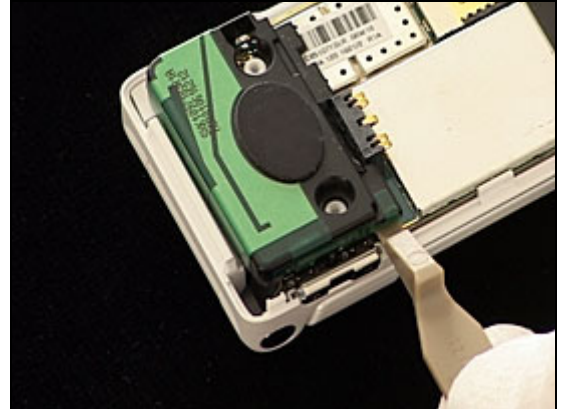


Carefully lift off the *lower outer cover*.

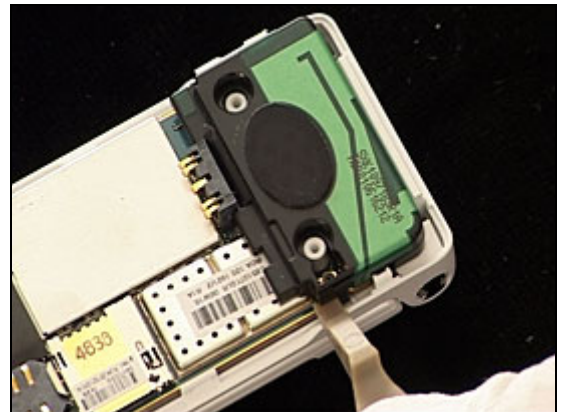


2.1.4 Speaker Box

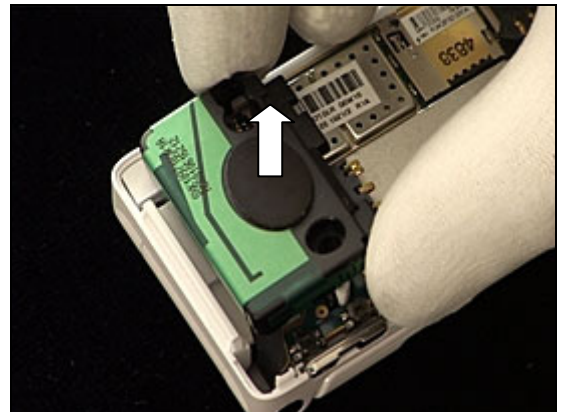
Insert the front opening tool and release the *speaker box* from the *PBA* on this side.



Do the same on the opposite side.



Remove the *speaker box*.

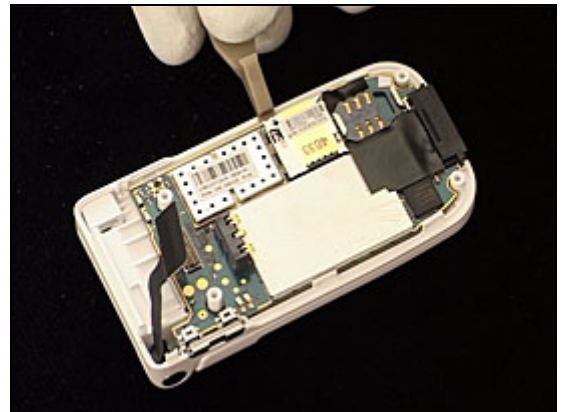


2.1.5 PCBA

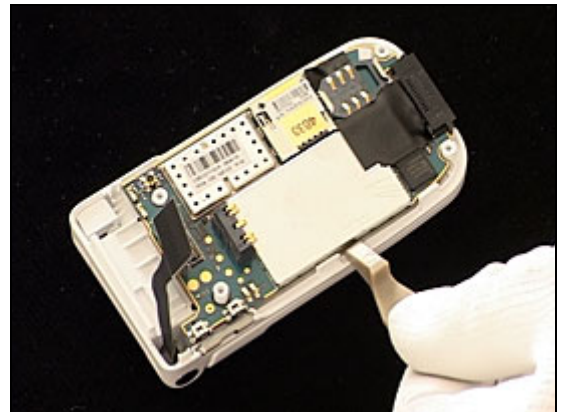
Disconnect the board-to-board connector with the front opening tool (see picture page 5).



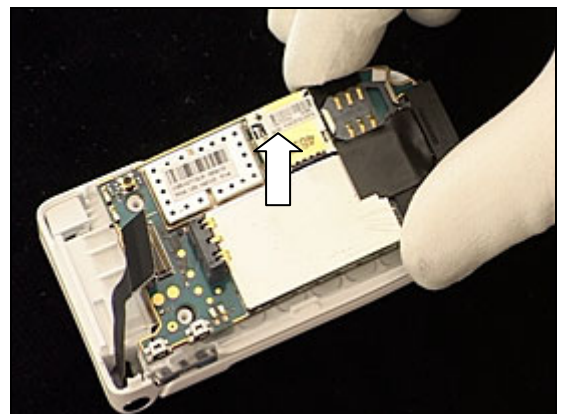
Release the *PCBA* from the *lower inner cover* with the front opening tool.



Do the same on the opposite side.

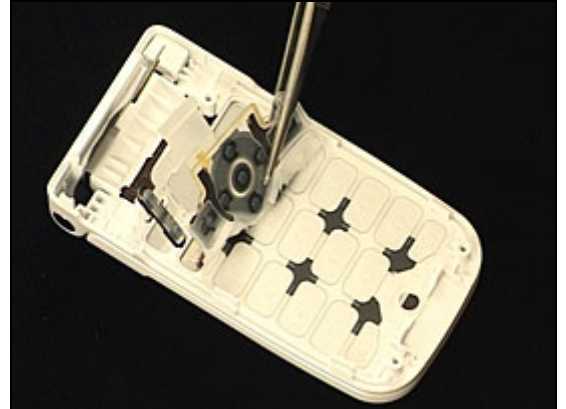


Remove the *PCBA*.



2.1.6 Keypad

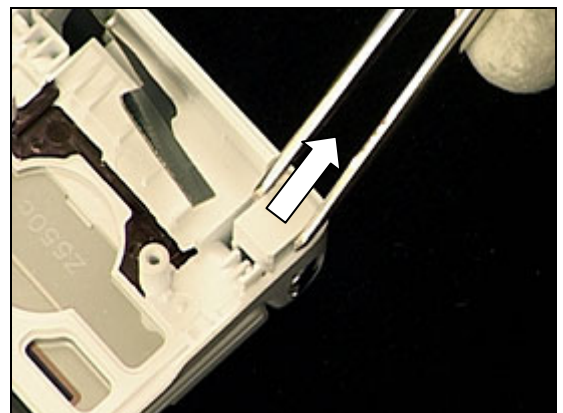
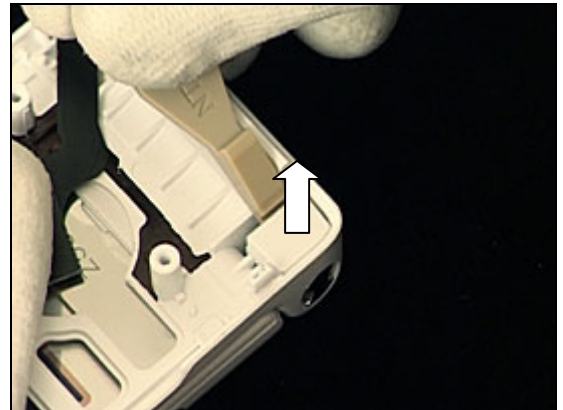
Remove the *keypad* with the tweezers or by hand.



2.1.7 Side Ring Strap

Use the front opening tool to raise the *side ring strap* from its position,

and remove it with the tweezers.



2.1.8 Side Ring

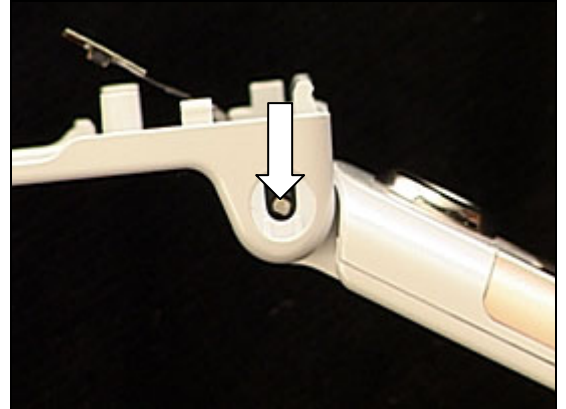
Use the dentist hook or the tweezers to push the *side ring* out of its hole,

and remove it with the tweezers

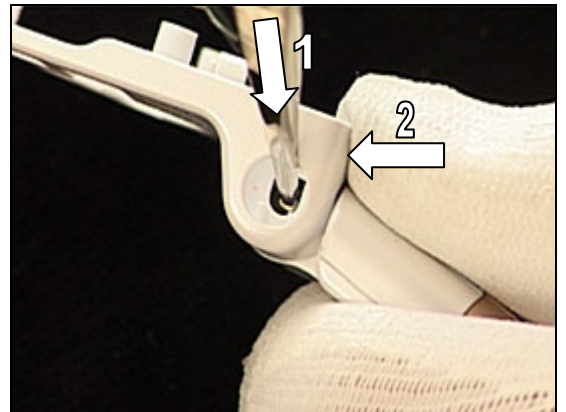


2.1.9 Lower Inner Cover

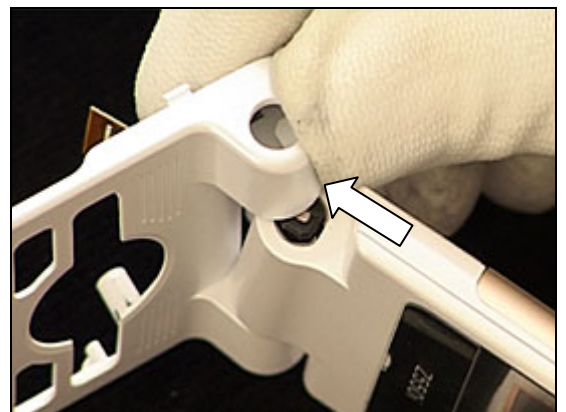
This is the *hinge* which can be moved inwards like a spring.



Press the *hinge* inwards with the tweezers (1) and at the same time move the *lower inner cover* in the direction of the arrow (2),



until the *lower inner cover* is released from the *hinge*.
Continue to push,

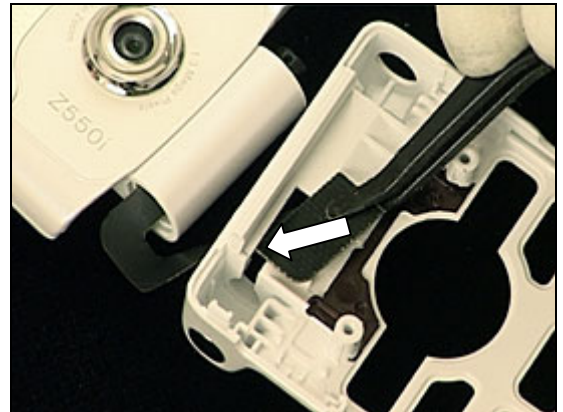


until the *lower inner cover* is separated from the upper unit.



Lower Inner Cover *continued*

Slide the flex film out of the hole of the *lower inner cover*,



to make it completely separated from the upper unit.



2.2 Upper unit

The disassembly is done in the following order:

1. Co-Brand Screw Covers (not to be reused)
2. Upper Outer Cover
3. Upper Inner Cover



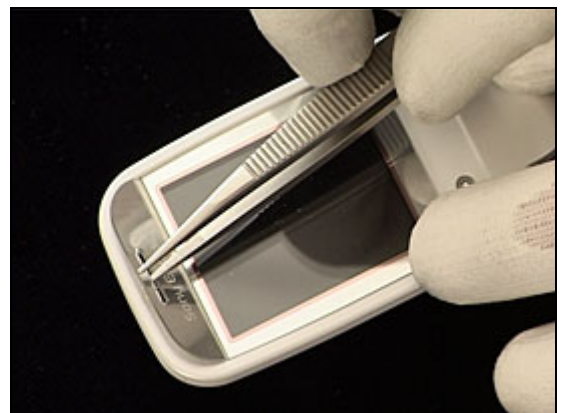
2.2.1 Co-Brand Screw Covers

BE CAREFUL NOT TO DAMAGE THE UPPER INNER COVER DURING THIS OPERATION!

Use the tweezers and/or the dentist hook to release and remove the first of the two *screw covers*.

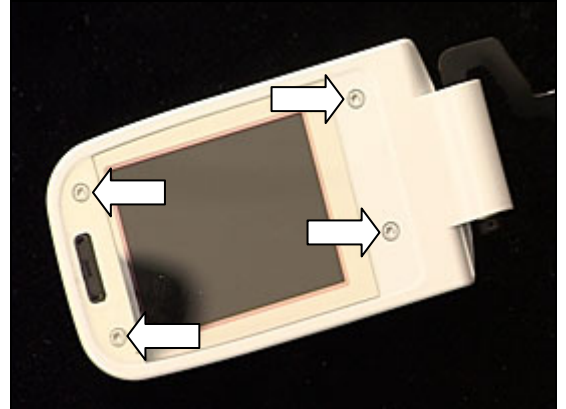
Insert the tweezers or the dentist hook through the hole of this *screw cover* as shown in picture to release and remove it.

THE CO-BRAND SCREW COVERS CANNOT BE REUSED AND MUST BE SCRAPPED!



2.2.2 Upper Outer Cover

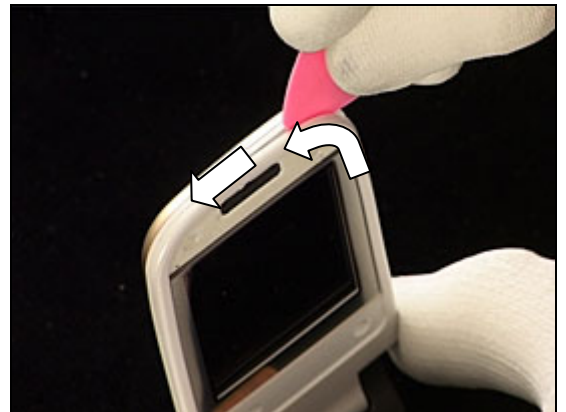
Use torx bit no. 6 to remove these four screws.



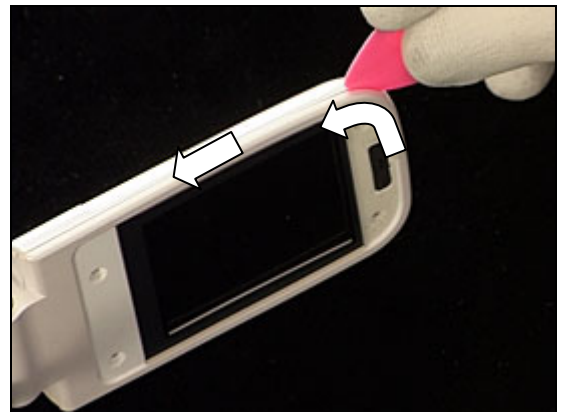
Insert the guitar pick as shown in picture and slide it in the direction of the arrow to release the *upper outer cover* on this side.



Insert the guitar pick in the gap and slide it around the corner towards the opposite corner to release the *upper outer cover* at the top.



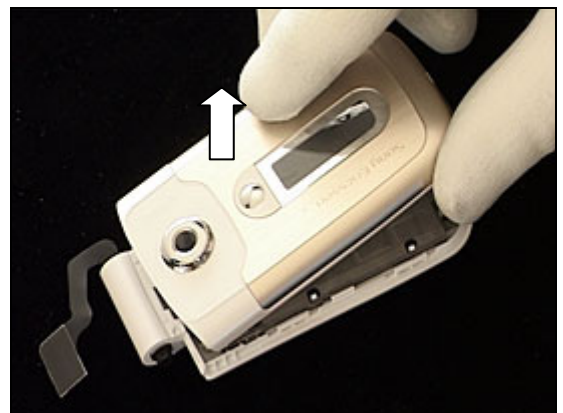
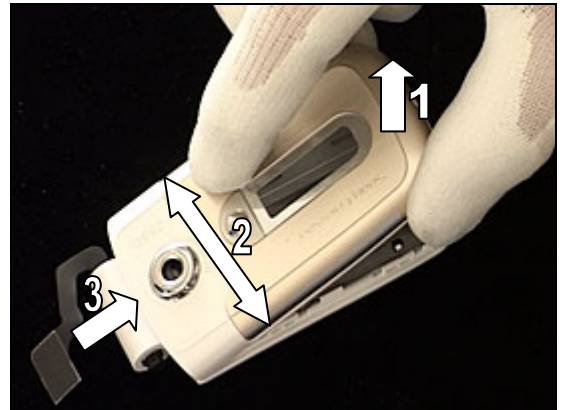
Continue to slide the guitar pick around this corner all the way down to the end of the cover.



Upper Outer Cover *continued*

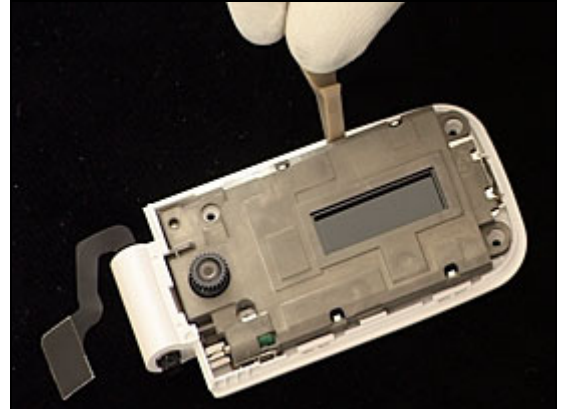
Lift the *upper outer cover* at the top (1) and gently wiggle it side to side (2) until it is released at the hinge section (3),

and can be removed.



2.2.3 Upper Inner Cover

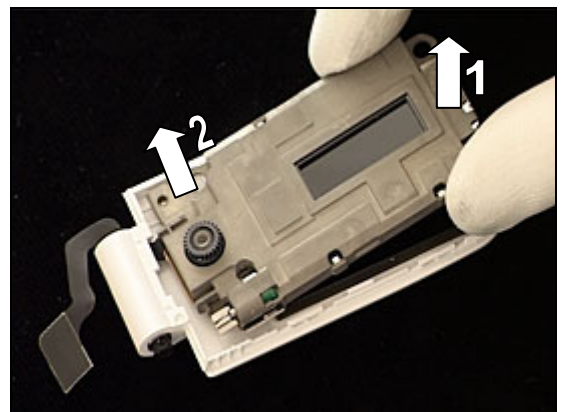
Unsnap the *LCD frame* from the *upper inner cover* with the front opening tool on this side.



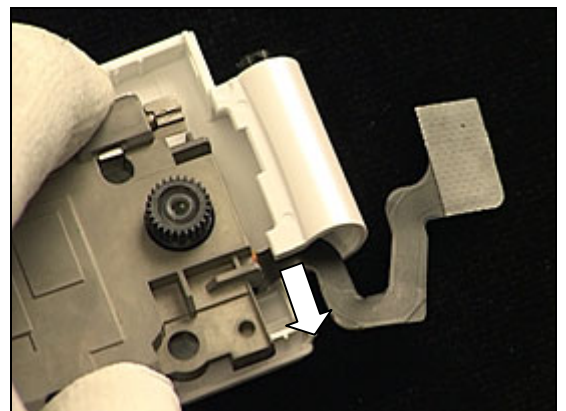
Do the same on the opposite side



Lift the *LCD frame* at the top (1) and move it in the direction of the arrow (2),

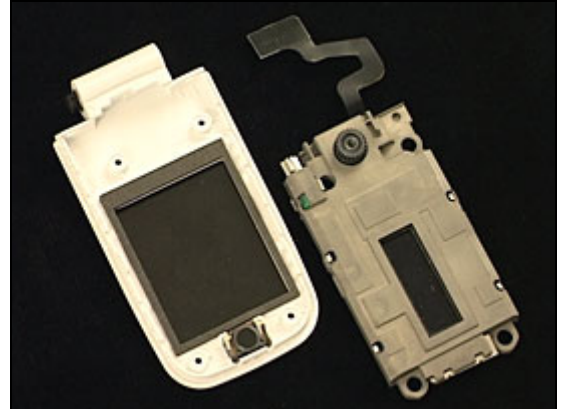


to make the flex film smoothly slide out of the hinge section,



Upper Inner Cover *continued*

to have them completely separated.



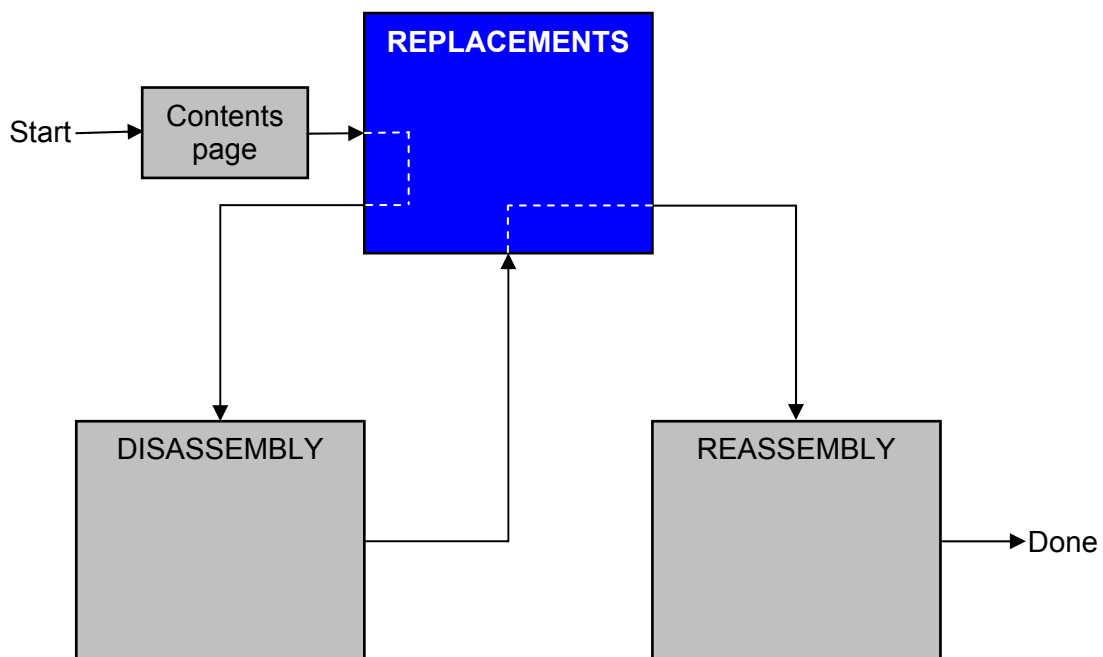
3 Replacements

Search for the part to be replaced on the Contents page and go to that instruction to be found in this *Replacements* section.

The instruction usually begins by directing you to the *Disassembly* section with a specification of the instructions you have to carry out in order to disassemble the phone as far as needed before the actual replacement.

Go back to this *Replacements* section and carry out the instruction.

The instruction usually ends by directing you to the *Reassembly* section with a specification of the instructions you have to carry out in order to reassemble the phone.





3.1 Battery Cover

Follow the 2.1.1 Disassembly instructions!

Prepare the new battery cover.

Follow the 4.2.8 Reassembly instructions!

3.2 Screw Covers

Follow the 2.1.2 Disassembly instructions!

Prepare the new screw covers.

Follow the 4.2.7 Reassembly instructions!

3.3 Lower Outer Cover

Follow the 2.1.1 – 2.1.3 Disassembly instructions!

Prepare the new lower outer cover.

Follow the 4.2.6 – 4.2.8 Reassembly instructions!

3.4 Speaker Box

Follow the 2.1.1 – 2.1.4 Disassembly instructions!

Prepare the new speaker box.

Follow the 4.2.5 – 4.2.8 Reassembly instructions!

3.5 Side Ring Strap

Follow the 2.1.1 – 2.1.7 Disassembly instructions!

Prepare the new side ring strap.

Follow the 4.2.2. – 4.2.8 Reassembly instructions!

3.6 Side Ring

Follow the 2.1.1 – 2.1.8 Disassembly instructions!

Prepare the new side ring.

Follow the 4.2.1 – 4.2.8 Reassembly instructions!

3.7 Lower Inner Cover

Follow the 2.1.1 – 2.2.2 Disassembly instructions!

Prepare the new lower inner cover.

Follow the 4.1.2 – 4.2.8 Reassembly instructions!



3.8 Co-Brand Screw Covers

Follow the 2.2.1 Disassembly instructions!

Prepare the new co-brand screw covers.

Follow the 4.1.4 Reassembly instructions!

3.9 Upper Outer Cover

Follow the 2.2.1 – 2.2.2 Disassembly instructions!

Prepare the new upper outer cover.

Follow the 4.1.2 – 4.1.4 Reassembly instructions!

3.10 Upper Inner Cover

Follow the 2.1.1 – 2.2.3 Disassembly instructions!

Prepare the new upper inner cover.

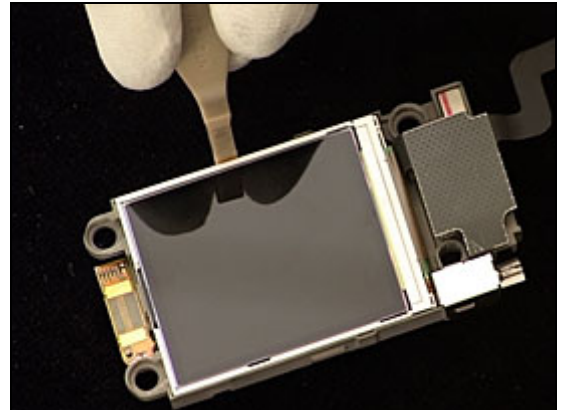
Follow the 4.1.1 – 4.2.8 Reassembly instructions!

3.11 Dual LCD

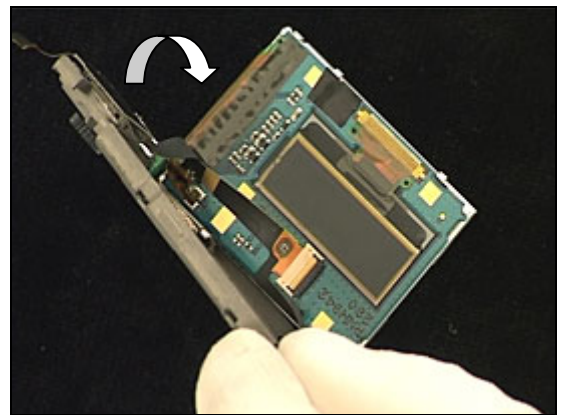
REMOVAL

Follow the 2.1.1 –2.2.3 Disassembly instructions!

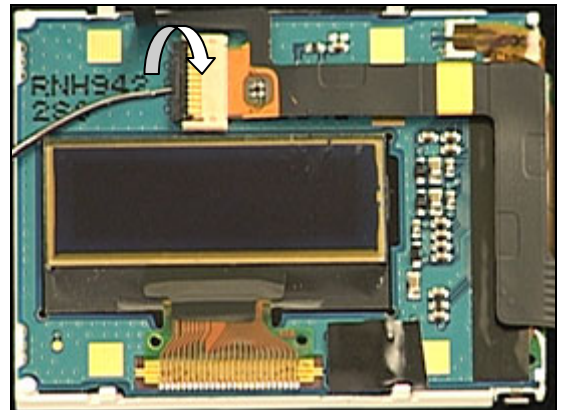
Use the front opening tool to release the LCD from its frame.



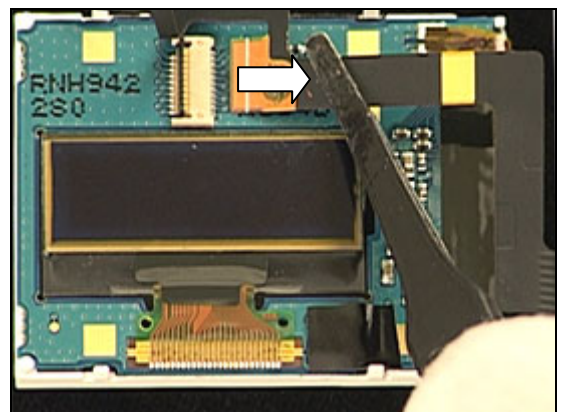
Turn the LCD like this to get access to the FPC-connector.
(see picture on page 5 regarding FPC connectors)



Unlock the FPC-connector with the dentist hook,



and remove the flex film with the flex film assembly tool,



Dual LCD continued

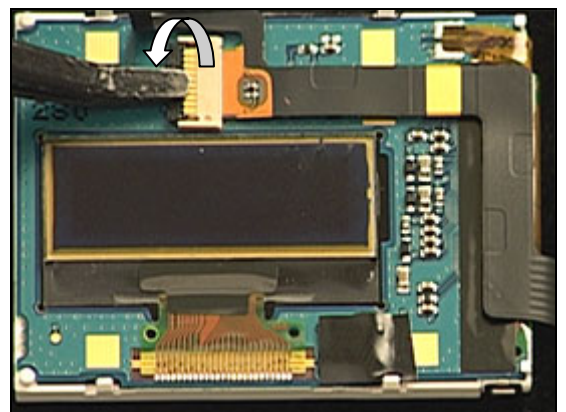
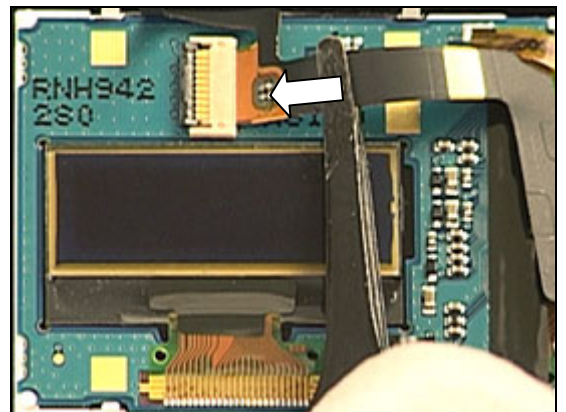
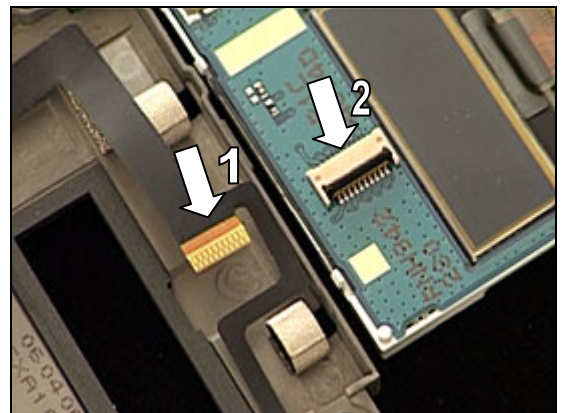
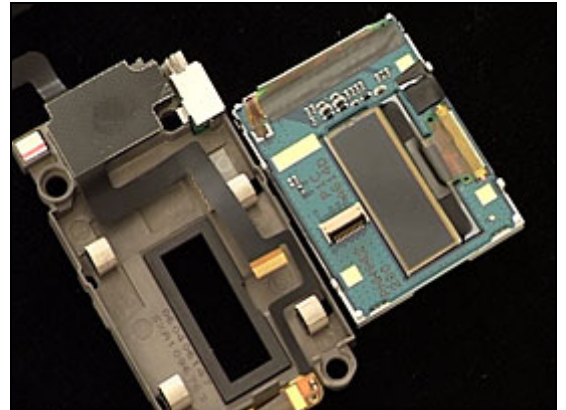
to be able to separate the *dual LCD* from the *LCD frame*.

INSTALLATION

Place the flex film connector (1) and FPC-connector (2) next to each other.

Turn the *LCD* and the *LCD frame* against each other so that the flex film can be inserted into the FPC-connector with the flex film assembly tool.

Lock the FPC-connector by turning the black bar with the flex film assembly tool,

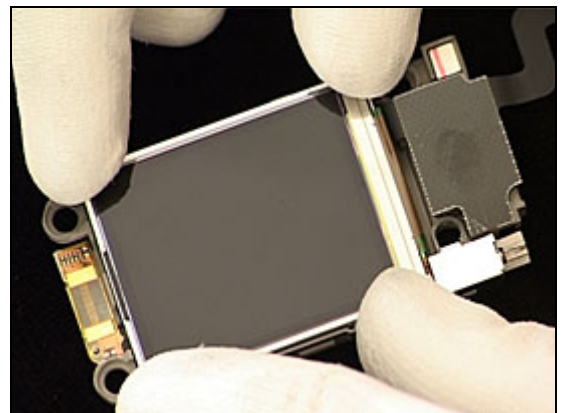


Dual LCD *continued*

like this.

Put the *LCD* into its frame and press on the corners to secure its position.

Follow the 4.1.1 – 4.2.8 Reassembly instructions!



3.12 Main FPC

REMOVAL

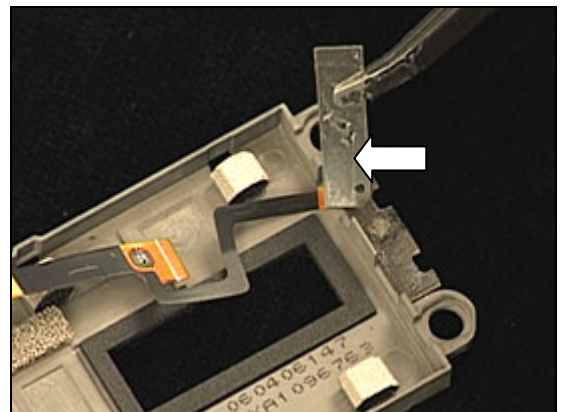
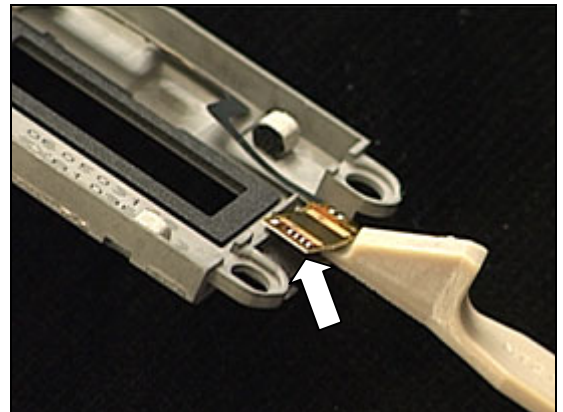
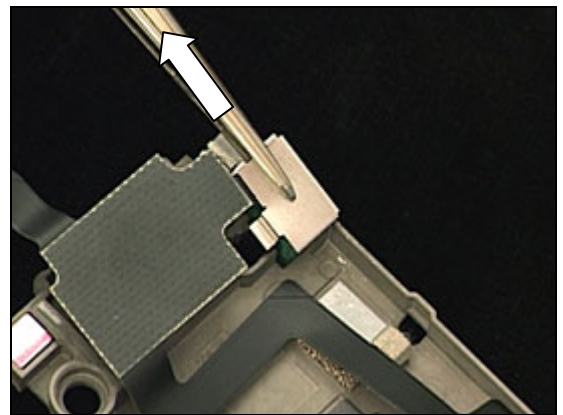
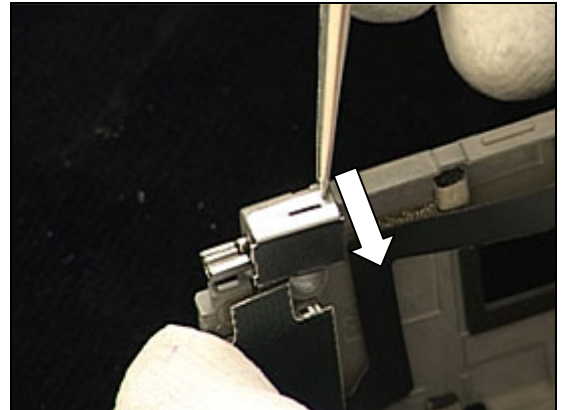
Follow the 2.1.1 –2.2.3 Disassembly instructions!
Follow the 3.11 Removal instructions!

Loosen the *vibrator support* with the tweezers,

and remove it.

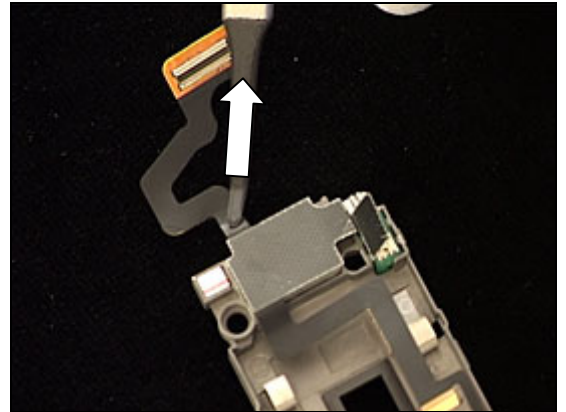
Insert the front opening tool at the top underneath the metal plate to release the *main FPC*.

Make sure the metal plate is removed together with the *main FPC*.



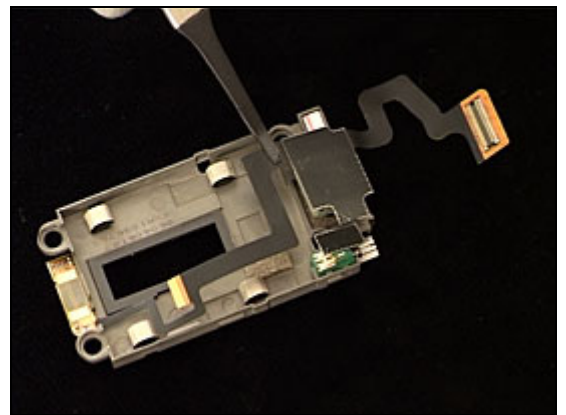
Main FPC continued

Remove the *main FPC*.

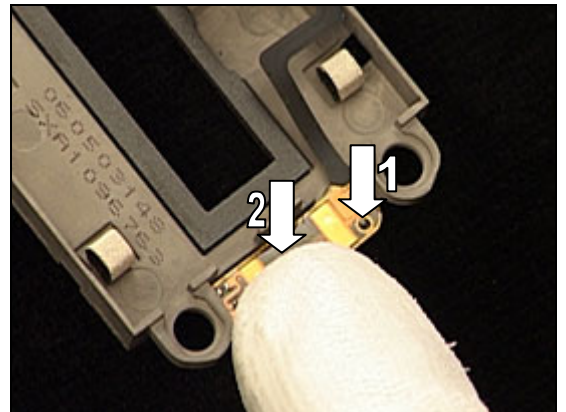


INSTALLATION

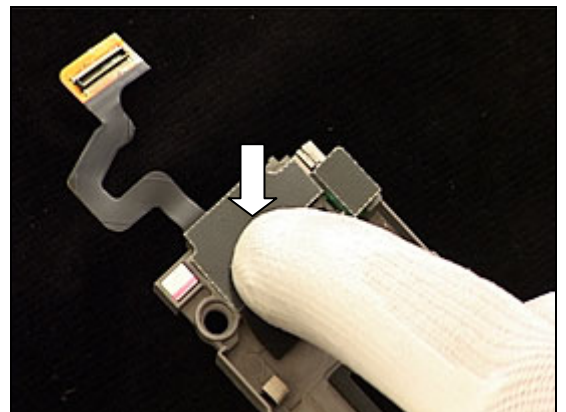
Place the *main FPC* like this.



Put the top part of the *main FPC* in its proper place with the help of the guiding hole of the *main FPC* and the guiding peg of the *LCD frame* (1) and then press (2) with your finger to secure the attachment.



Gently push the *camera* into the bottom of its cavity.

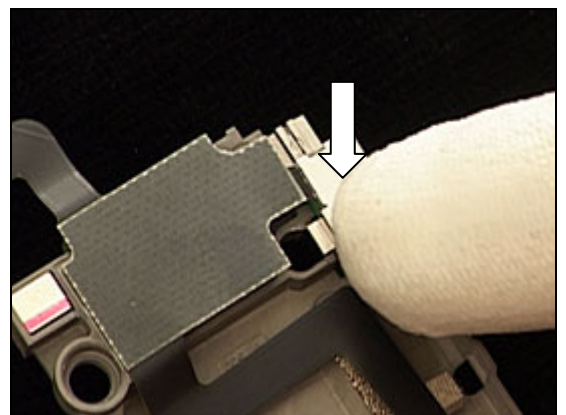
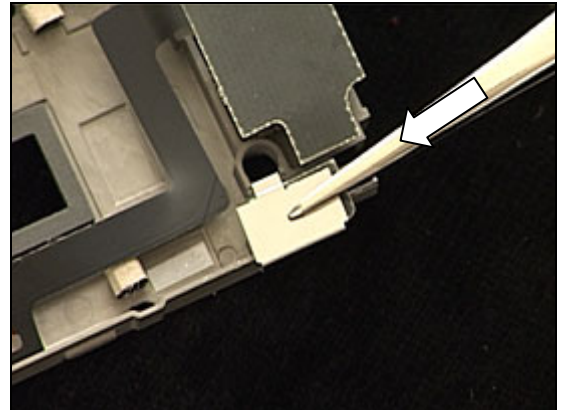


Main FPC *continued*

Put the *vibrator support* on top of the FPC contacts for the vibrator,

and press to secure its position.

Follow the 3.11 Installation instructions!
Follow the 4.1.1 – 4.2.8 Reassembly instructions!



3.13 Camera

REMOVAL

Follow the 2.1.1 –2.2.3 Disassembly instructions!
Follow the 3.11 & 3.12 Removal instructions!

Keep the camera removal tool in this position when the camera orientation is as shown in the picture.

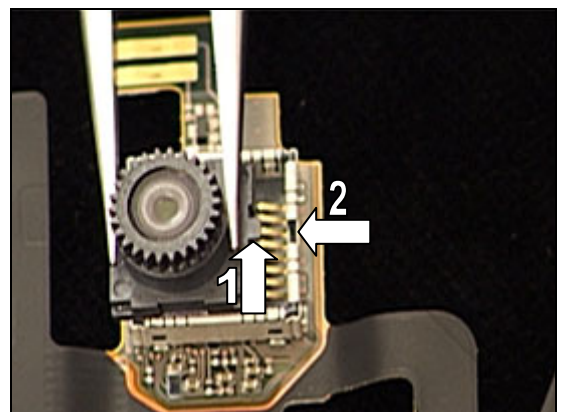
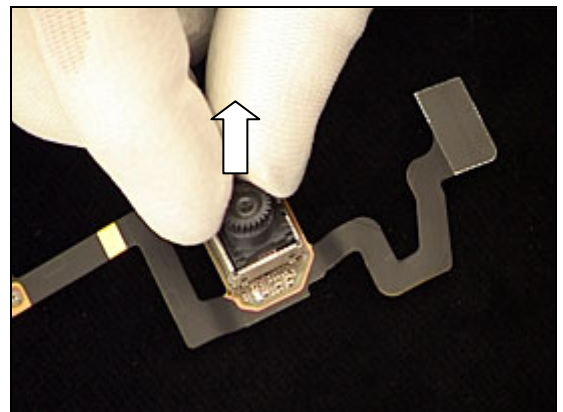
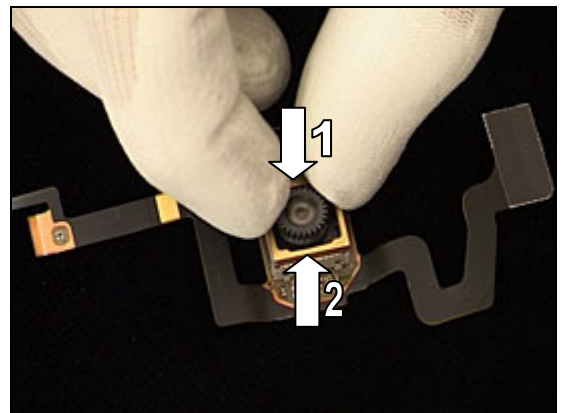
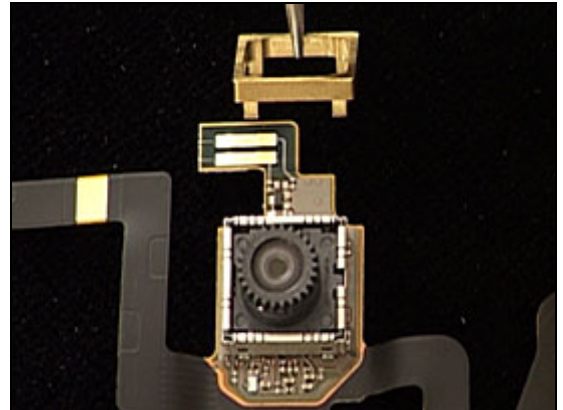
Push the tool to the bottom of the camera socket (1).
Then pull it out of the socket (2).

Remove the *camera* by lifting straight up.

INSTALLATION

**NOTE THE ORIENTATION OF CAMERA AND SOCKET:
CAMERA PEG (1) INTO SOCKET NOTCH (2)!**

Place the *camera* in its proper position on top of the socket.

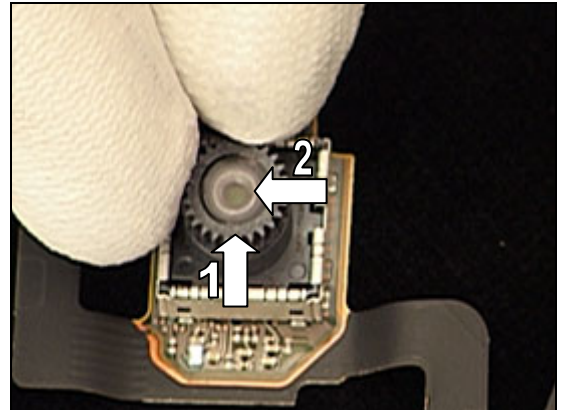


Camera *continued*

DO NOT TOUCH THE CAMERA LENS!

Press on the black camera case (1) outside the camera lens (2) until the camera has reached the bottom of the socket.

Follow the 3.12 & 3.11 Installation instructions!
Follow the 4.1.1 – 4.2.8 Reassembly instructions!



3.14 Vibrator & Vibrator Support

REMOVAL

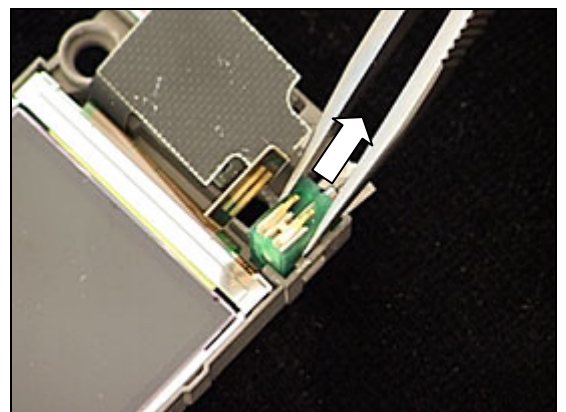
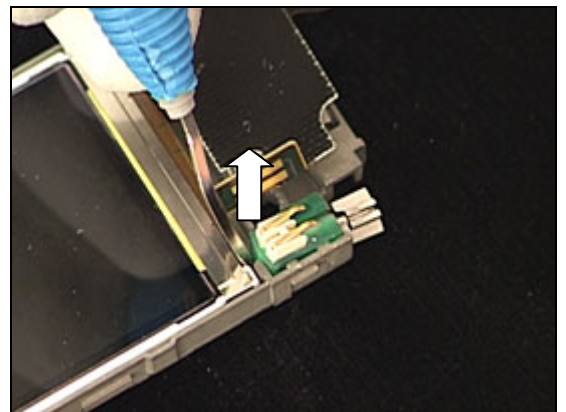
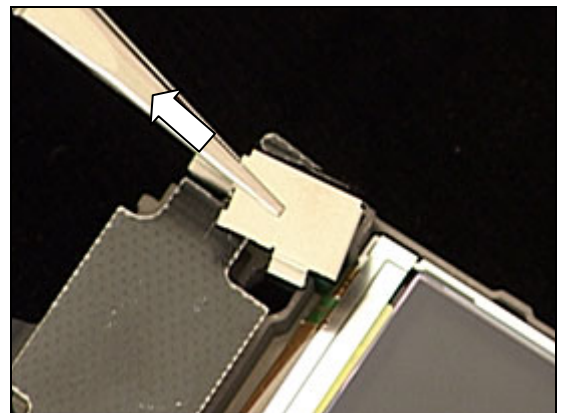
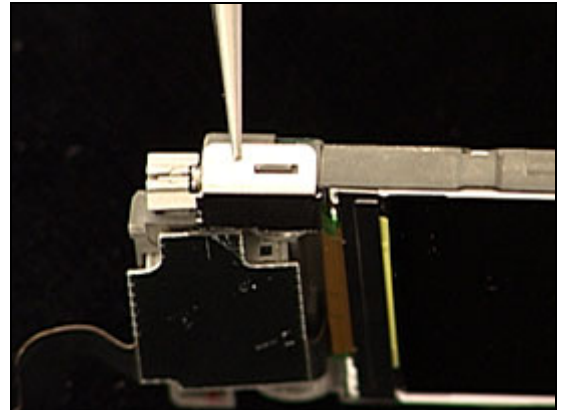
Follow the 2.1.1 – 2.2.3 Disassembly instructions!

Loosen the *vibrator support* with the tweezers,

and remove it.

Use the dentist hook to raise the *vibrator* out of its cavity,

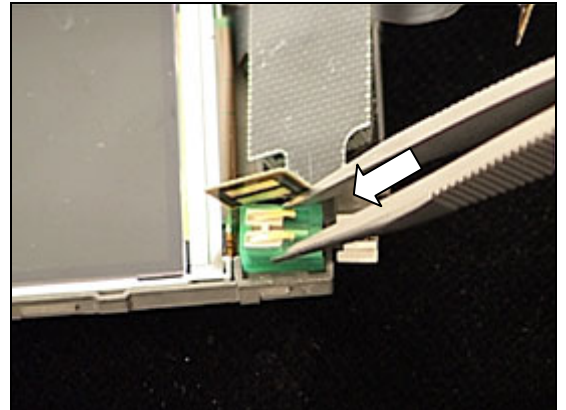
and remove it with the tweezers.



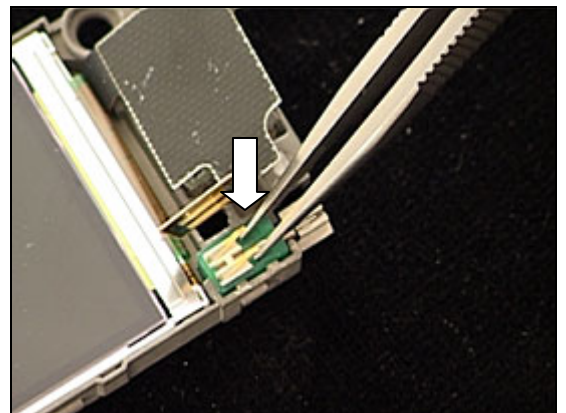
Vibrator & Vibrator Support *continued*

INSTALLATION

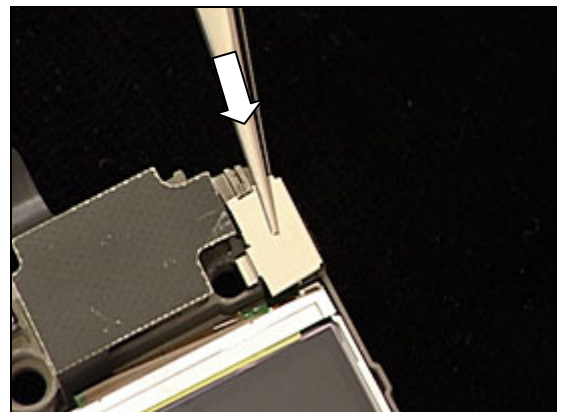
Place the *vibrator* in the cavity,



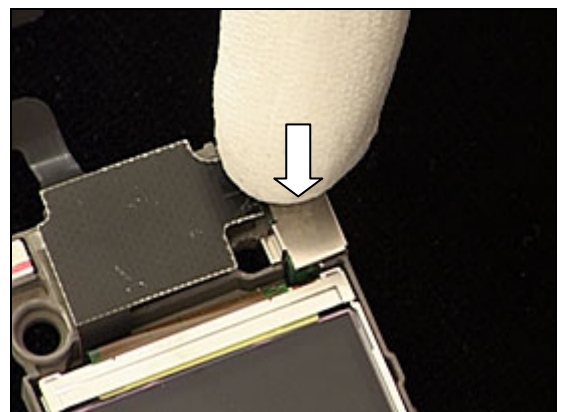
and press it down to the bottom without touching the contact springs.



Put the *vibrator support* on top of the FPC contacts for the vibrator,



and press to secure its position.



Follow the 4.1.1 – 4.2.8 Reassembly instructions!

3.15 Magnet

REMOVAL

Follow the 2.1.1 – 2.2.3 Disassembly instructions!

Press from behind with the tweezers to release and remove the *magnet*.

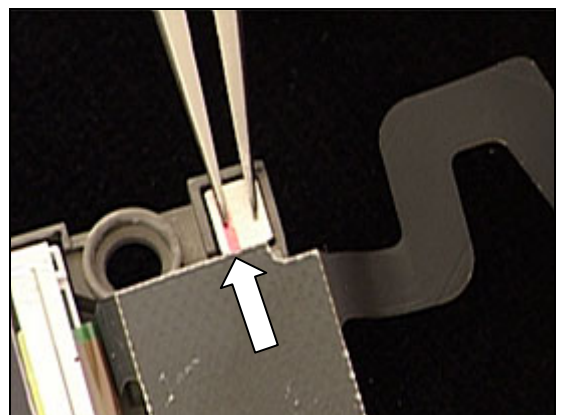
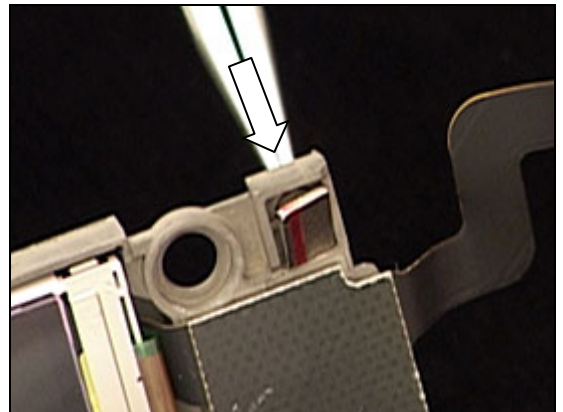
INSTALLATION

If necessary, first clean the cavity with isopropyl alcohol.

NOTE THE ORIENTATION OF THE RED LINE ON THE MAGNET!

Use the tweezers to mount the *magnet* and press for a few seconds to secure the attachment.

Follow the 4.1.1 – 4.2.8 Reassembly instructions!



3.16 Receiver

REMOVAL

Follow the 2.1.1 – 2.2.3 Disassembly instructions!

Use the dentist hook to raise the *receiver* out of its cavity.

Then remove it with the tweezers.

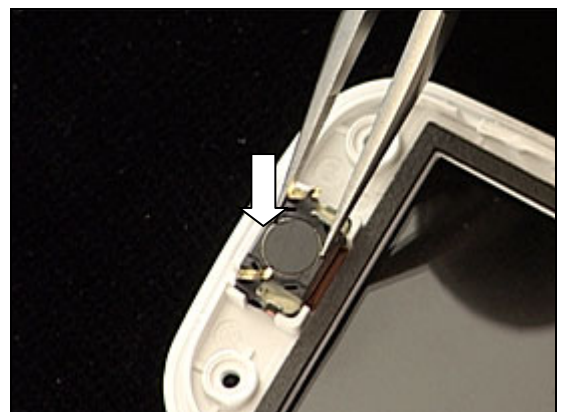
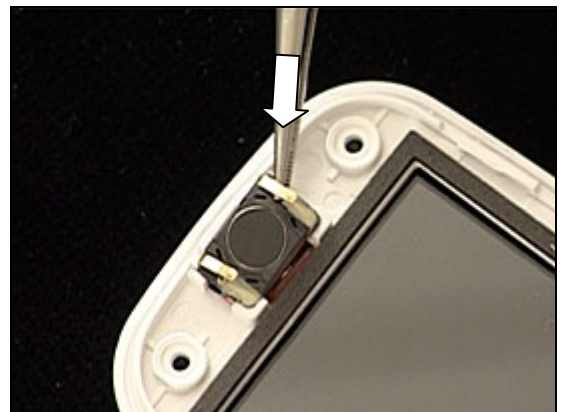
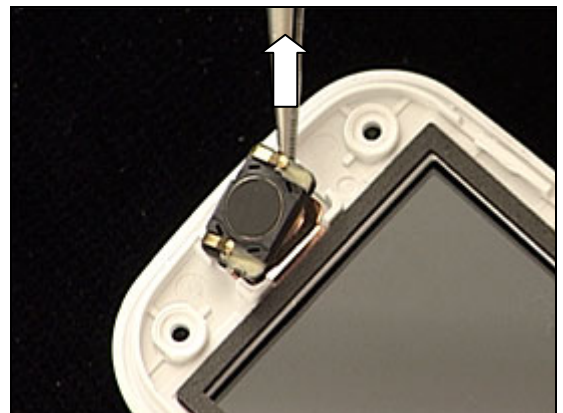
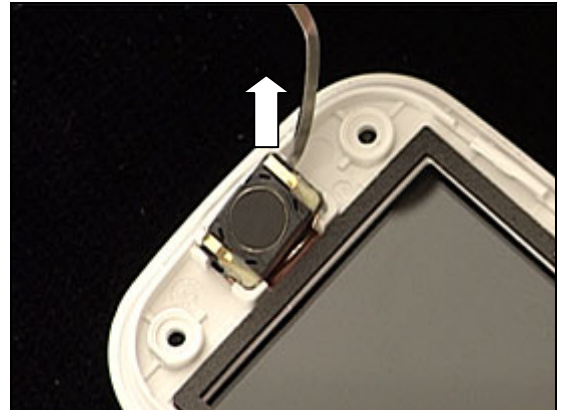
BE CAREFUL NOT TO DAMAGE THE COPPER FOIL LOCATED UNDERNEATH THE RECEIVER.

INSTALLATION

Place the *receiver* in the cavity,

and press it down to the bottom without touching the contact springs.

Follow the 4.1.1 – 4.2.8 Reassembly instructions!



3.17 Hinge

REMOVAL

Follow the 2.1.1 – 2.2.3 Disassembly instructions!

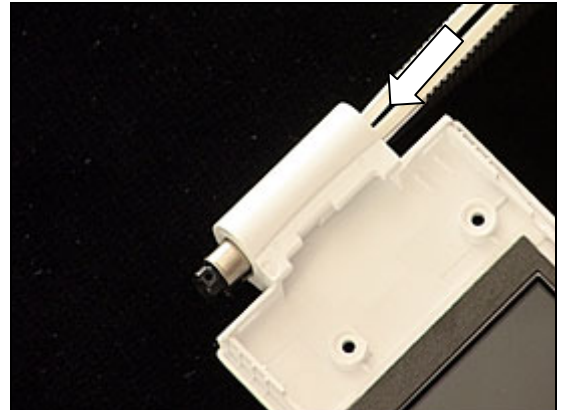
Press with the tweezers through the hole of the hinge section,

until the *hinge* falls out.

INSTALLATION

Note the shape of the hole where the *hinge* will be inserted.

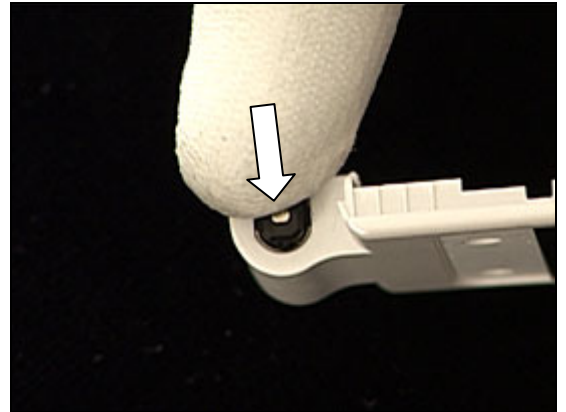
Insert the *hinge* like this.



Hinge continued

Press on the *hinge* as far as it goes.

Follow the 4.1.1 – 4.2.8 Reassembly instructions!



3.18 Sub Display Window

REMOVAL

Follow the 2.2.1 – 2.2.2 Disassembly instructions!

DO NOT USE EXCESSIVE FORCE WHEN PRESSING ON THE DISPLAY WINDOW AS IT MIGHT BREAK!

Carefully press with your finger from the inside on the *sub display window* until it becomes released from the *upper outer cover*,

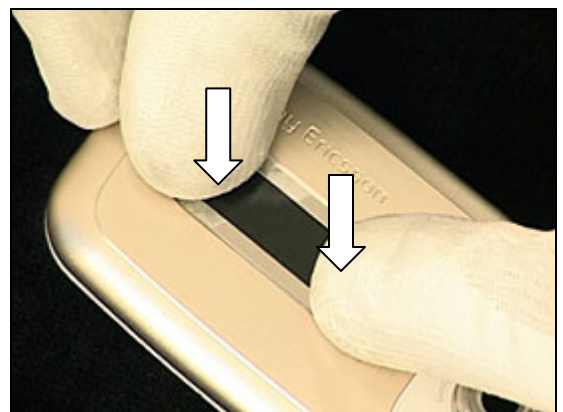
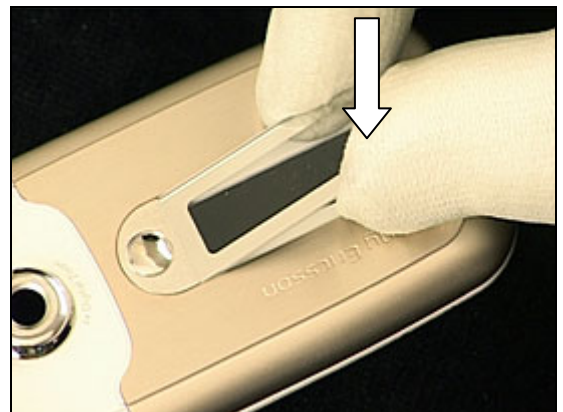
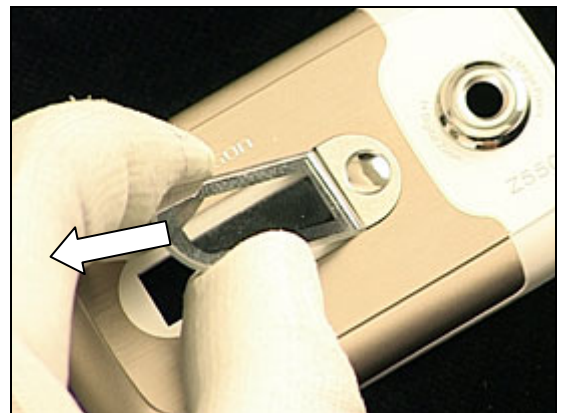
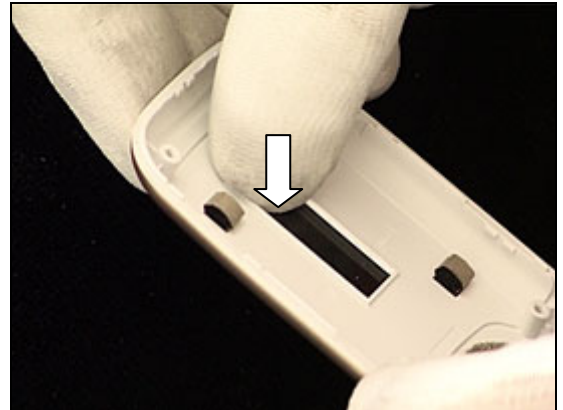
and remove it.

INSTALLATION

Place the *sub display window* like this,

and press to secure a good attachment.

Follow the 4.1.3 – 4.1.4 Reassembly instructions!



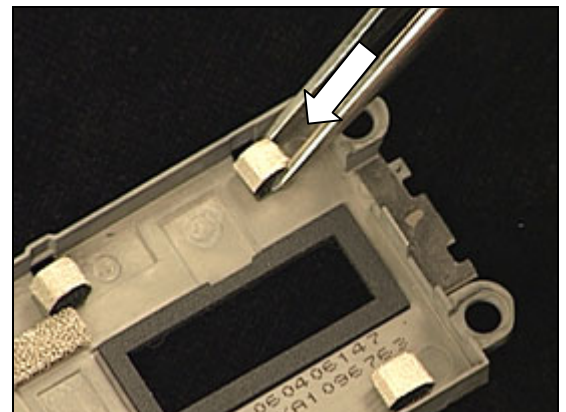
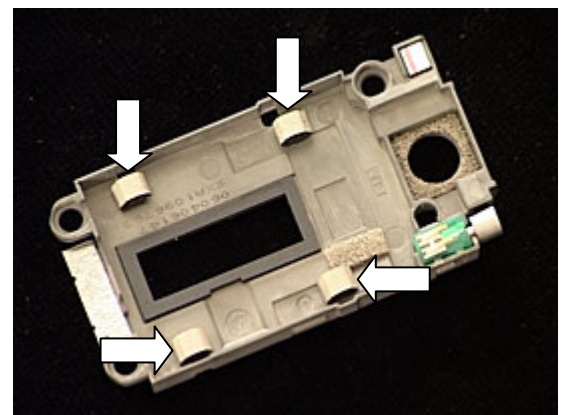
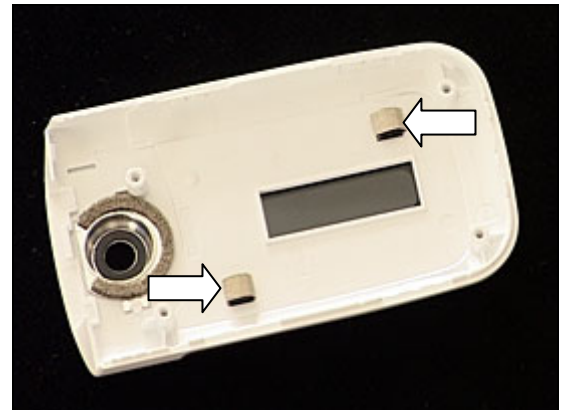
3.19 Electric Cloths

There is under normal circumstances no need to remove an *electric cloth* for replacement.

There are two *electric cloths* on the inside of the *upper outer cover*,

and four on the *LCD frame*.

In case an *electric cloth* is missing, use the tweezers and your fingers to attach a new one.

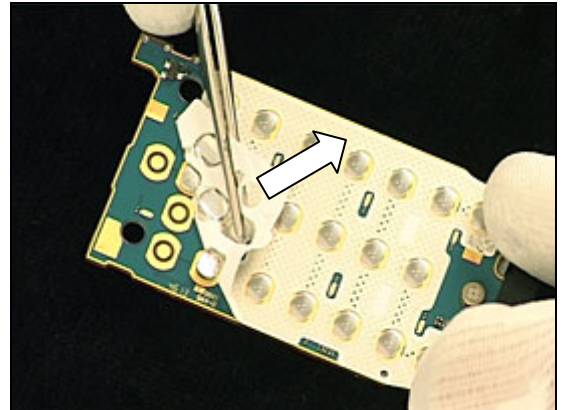


3.20 Dome Sheet Array

REMOVAL

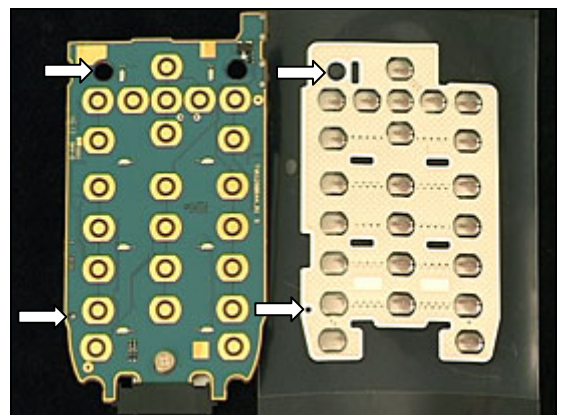
Follow the 2.1.1– 2.1.5 Disassembly instructions!

Use the tweezers to peel off the *dome sheet array* from the *PBA*.

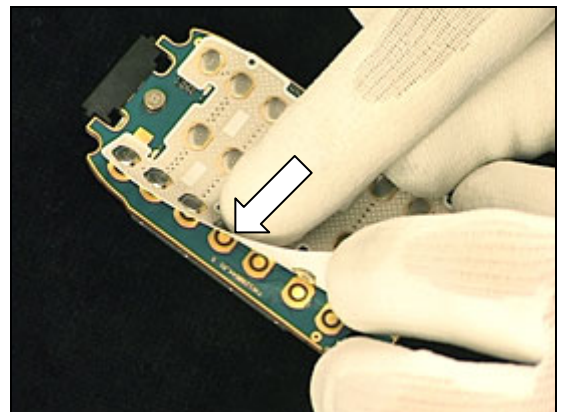


INSTALLATION

Clean the *PBA* surface with isopropyl alcohol.
Make sure that the two guiding holes on the *PBA* correspond to the two holes on the *dome sheet array*,

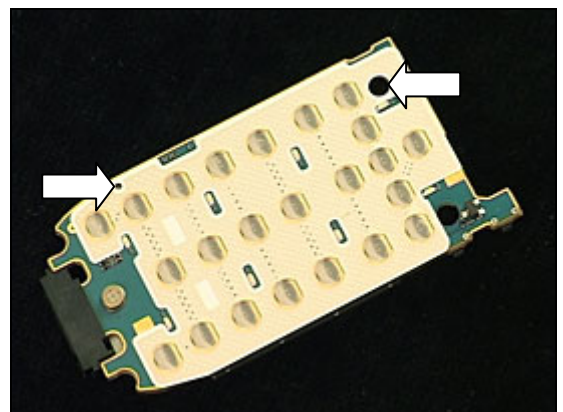


when attaching the new *dome sheet array*,



in a proper way.

Follow the 4.2.4 – 4.2.8 Reassembly instructions!

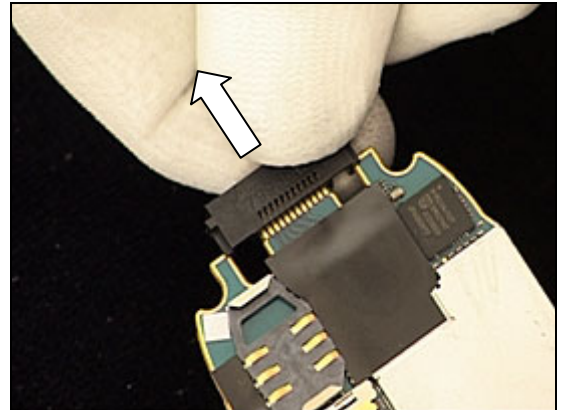


3.21 System Connector

REMOVAL

Follow the 2.1.1 – 2.1.5 Disassembly instructions!

Remove the *system connector* by pulling it from the *PBA*.

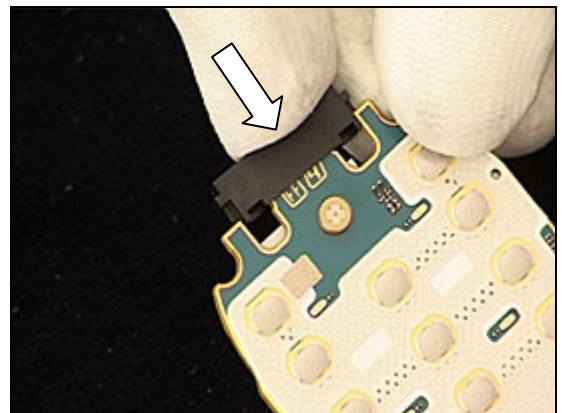


INSTALLATION

NOTE THE ORIENTATION OF THE SYSTEM CONNECTOR!

Push and press the *system connector* onto the *PBA* as far as it goes.

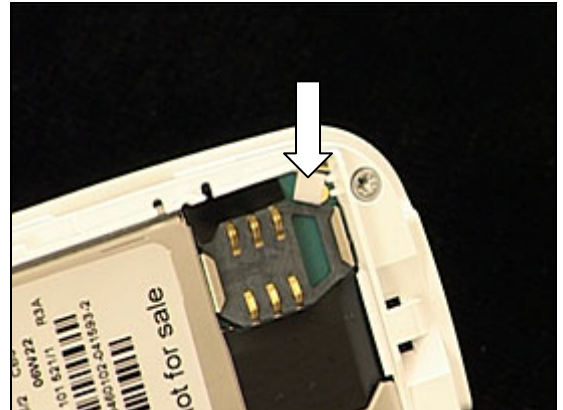
Follow the 4.2.4 – 4.2.8 Reassembly instructions!



3.22 Liquid Intrusion Indicator

INSPECTION

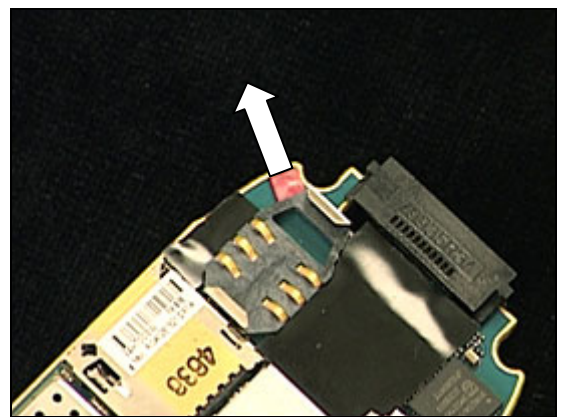
To check whether the liquid intrusion indicator has been activated or not, just remove the *battery cover* and the *battery*.



REMOVAL

Follow the 2.1.1 – 2.1.5 Disassembly instructions!

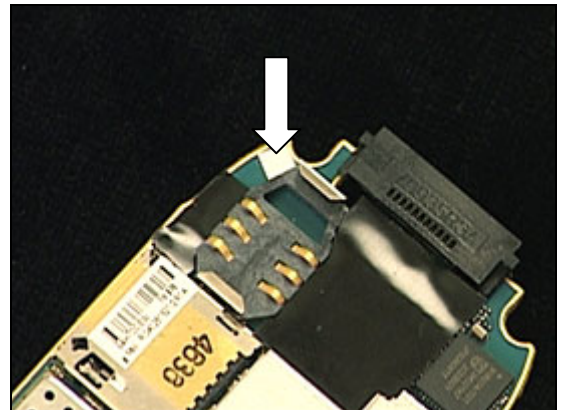
Remove the activated *liquid intrusion indicator* with the dentist hook and the tweezers.



INSTALLATION

Attach the new *liquid intrusion indicator* with the tweezers and your fingers.

Follow the 4.2.4 – 4.2.8 Reassembly instructions!



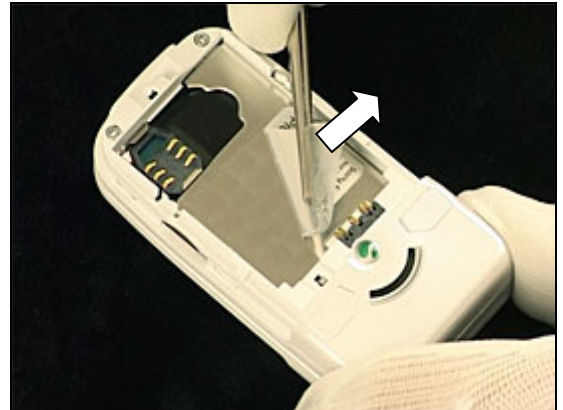
3.23 Label

Follow the 2.1.1 Disassembly instructions!

- Read the old label and/or write the information into the “Label make” program before removal
 - Note the position of the label before removal
 - Heat up the label by using hot air, if needed
 - Carefully remove the label without causing scratches
 - If there still are residues, clean the surface with isopropyl alcohol
-
- Check that the proper label format is loaded in the Zebra printer
 - Write a new label by using the program “Label make” and check that the printing is OK
 - Take the new label and place it onto the frame as in the adjacent picture

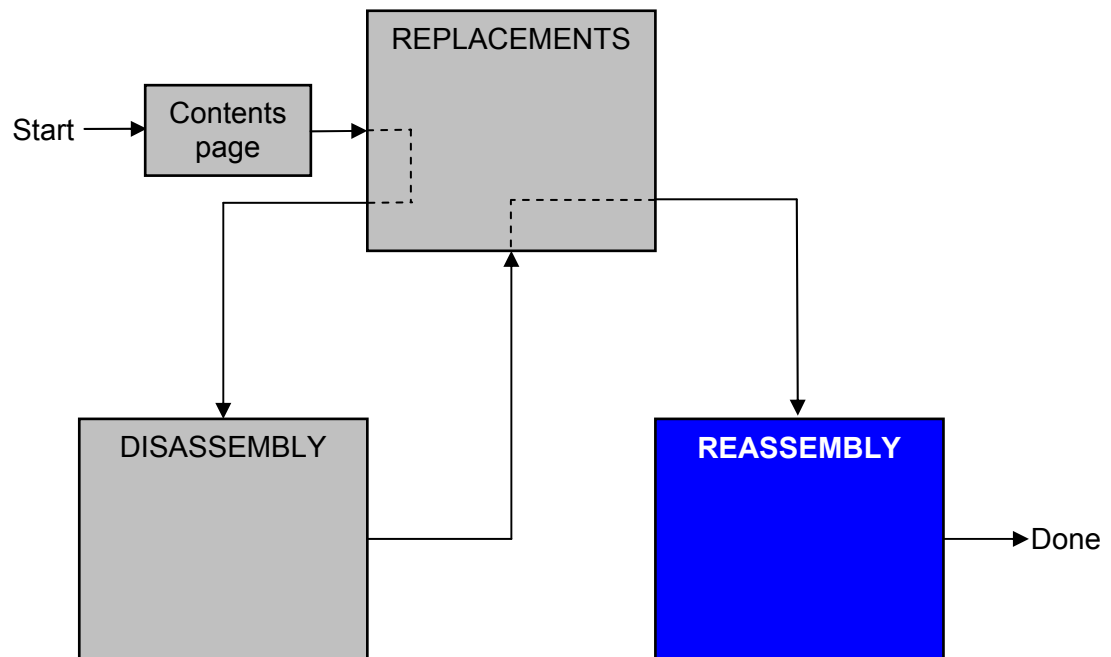
ONE LABEL ONLY IS ALLOWED!

Follow the 4.2.8 Reassembly instructions!



4 Reassembly

After replacing a part being listed in Replacements, the instruction of that section usually ends by directing you to this Reassembly section with a specification of the instructions you have to carry out in order to reassemble the phone.



4.1 Upper unit

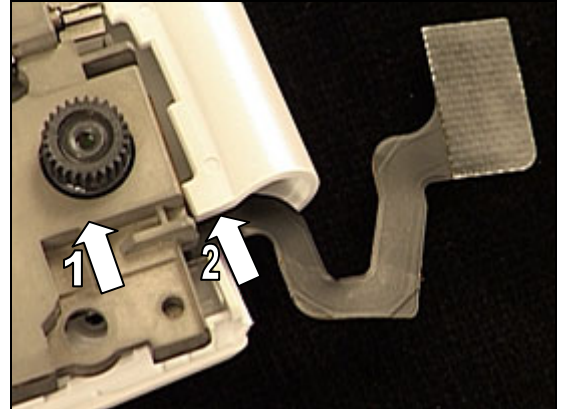
The reassembly is done in the following order:

1. Upper Inner Cover
2. Lower Inner Cover
3. Upper Outer Cover
4. Co-brand Screw Covers

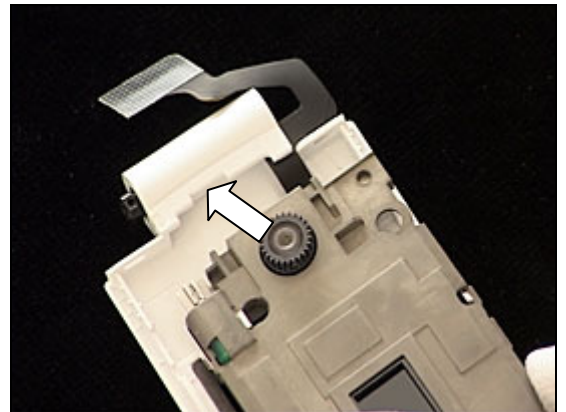


4.1.1 Upper Inner Cover

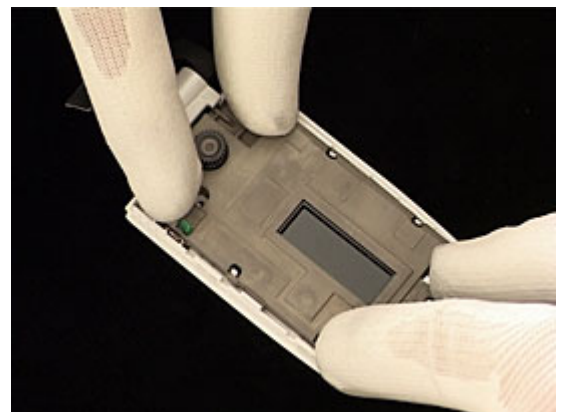
Hold the *LCD frame* in a slight vertical angle and move it (1) to slide the flex film through the slot (2) of the hinge section.



and at the same time push it against the hinge section

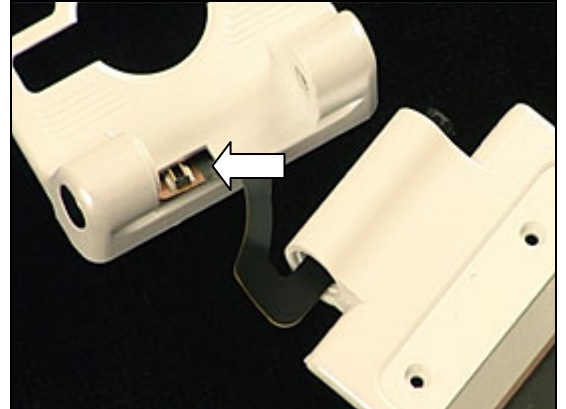


Press on the *LCD frame* to secure it to the *upper inner cover*.

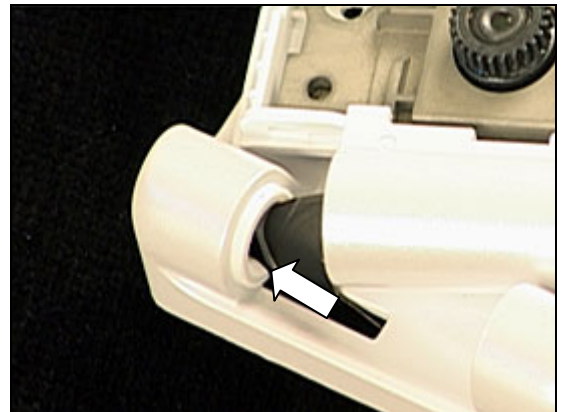


4.1.2 Lower Inner Cover

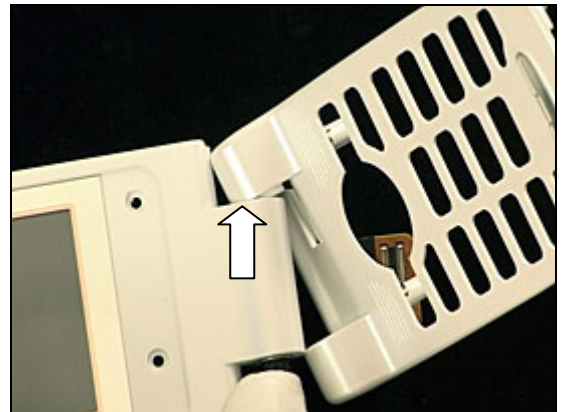
Insert the flex film through the hole of the *lower inner cover*,



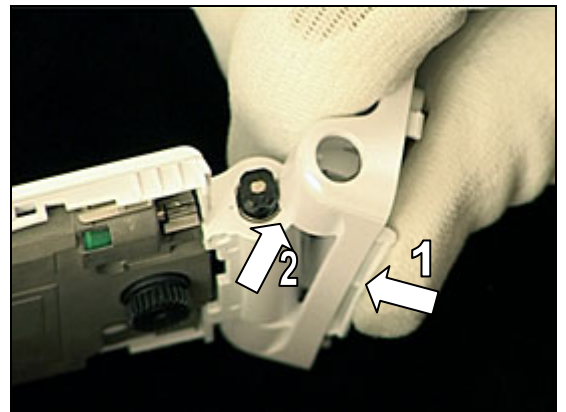
and then insert the flex film through the small slot of the *lower inner cover*.



Place one end of the hinge section against the *lower inner cover*,

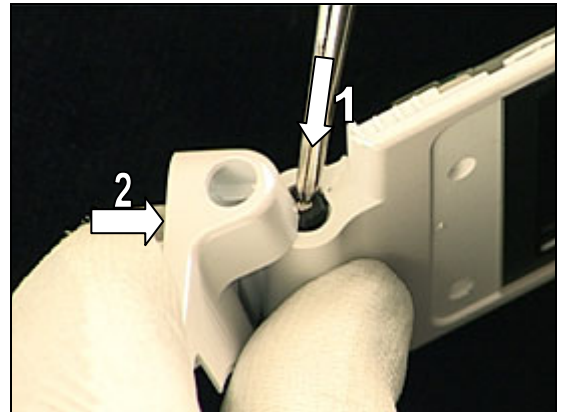


and press with your thumb (1) and place the opposite end of the hinge section as shown by the arrow (2).

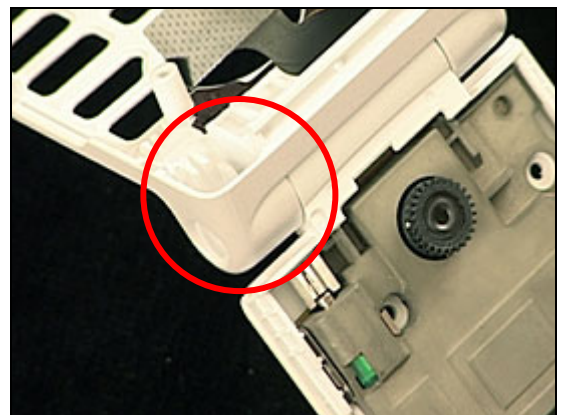


Lower Inner Cover *continued*

Press the *hinge* inwards (1) with the tweezers and at the same time push (2) the *lower inner cover* in the direction of the arrow,

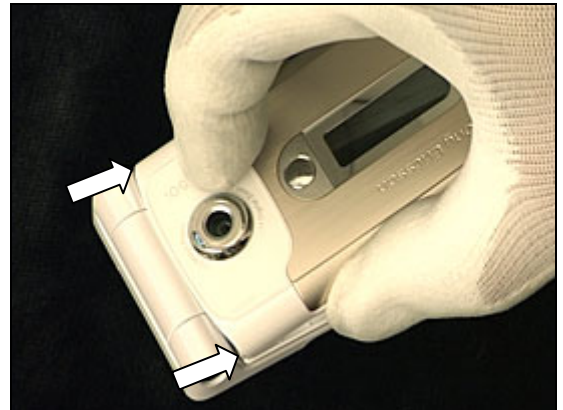


to make them properly joined.

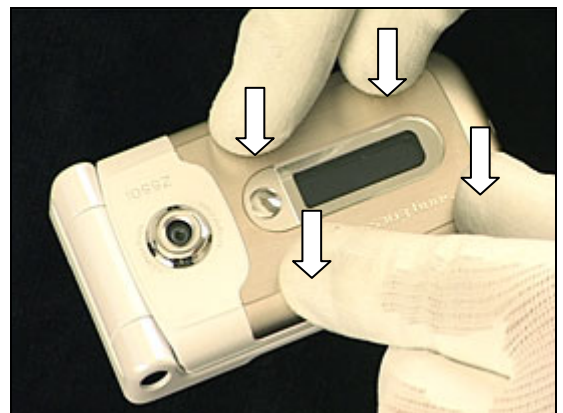


4.1.3 Upper Outer Cover

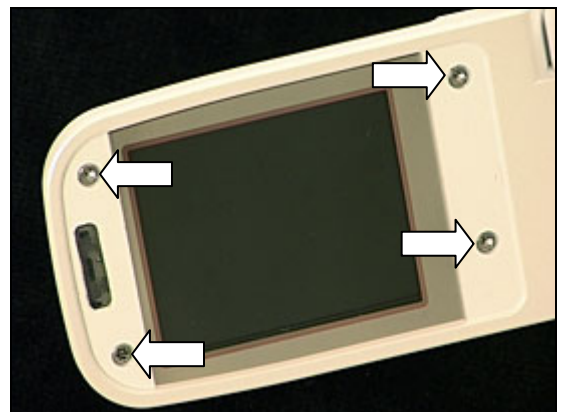
Hold the *upper outer cover* in a slight angle and snap it to the *inner outer cover* at the hinge section,



and then snap the remaining sides until the two covers are joined without any gaps.



Use **20 Ncm** torque when tightening the four screws with torx bit no. 6.



4.1.4 Co-Brand Screw Covers

Clean the cavities with isopropyl alcohol.

USE NEW CO-BRAND SCREW COVERS!

Use the tweezers and your fingers to attach the first *co-brand screw cover*,

and then the second one,

like this.



4.2 Lower unit

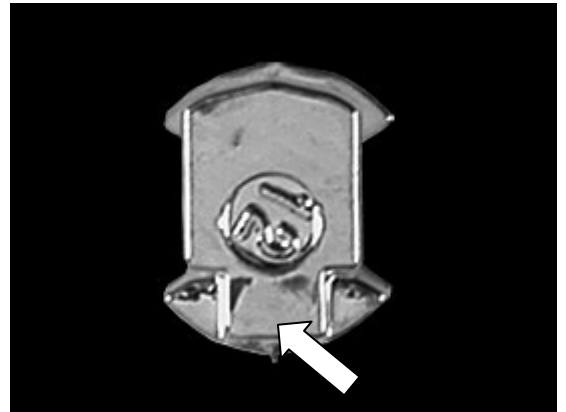
The reassembly is done in the following order:

1. Side Ring
2. Side Ring Strap
3. Keypad
4. PBA
5. Speaker Box
6. Lower Outer Cover
7. Screw Covers
8. Battery (a) & Battery Cover (b)

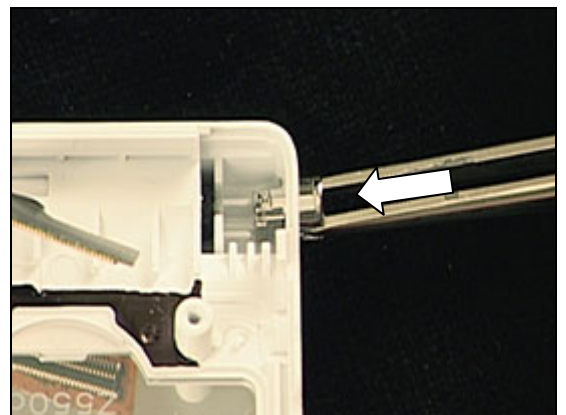


4.2.1 Side Ring

**NOTE THE ORIENTATION OF THE SIDE RING!
THIS PICTURE SHOWS THE "INWARD" SIDE OF THE SIDE RING,
AND THE ARROW POINTS AT THE PART TO BE INSERTED INTO
THE BOTTOM OF THE CAVITY!**



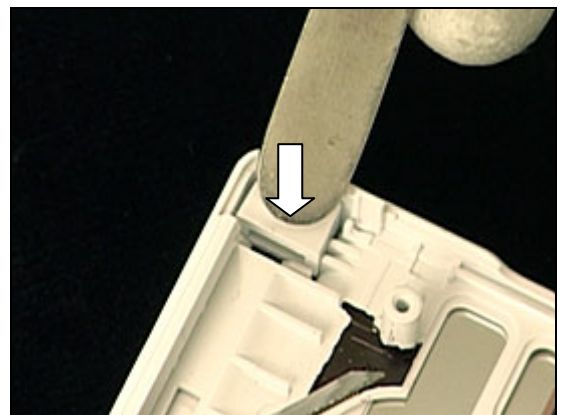
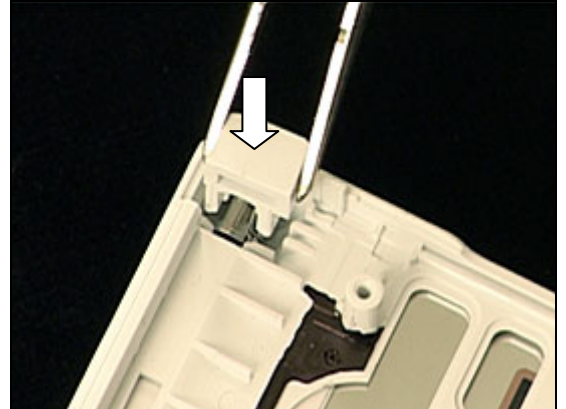
Insert the *side ring* through the hole of the *lower inner cover* with the tweezers.



4.2.2 Side Ring Strap

Insert the *side ring strap* with the tweezers,

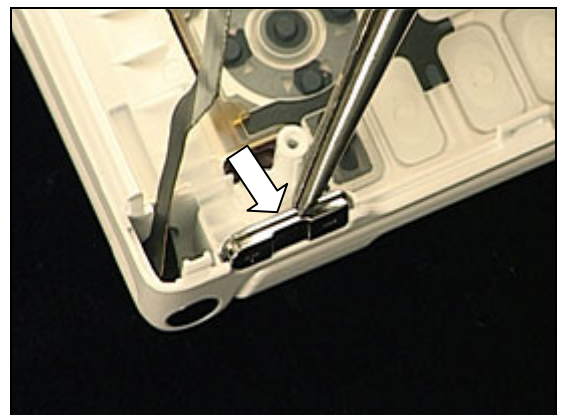
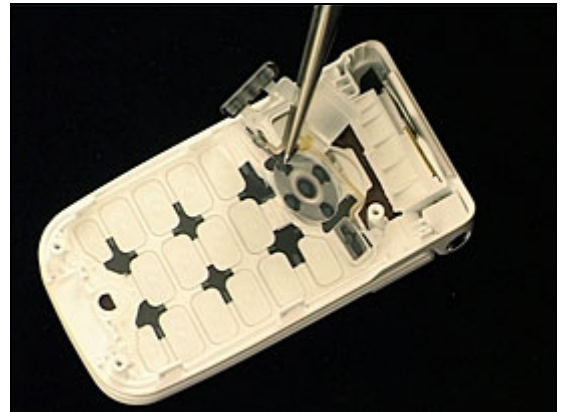
and press to secure its position.



4.2.3 Keypad

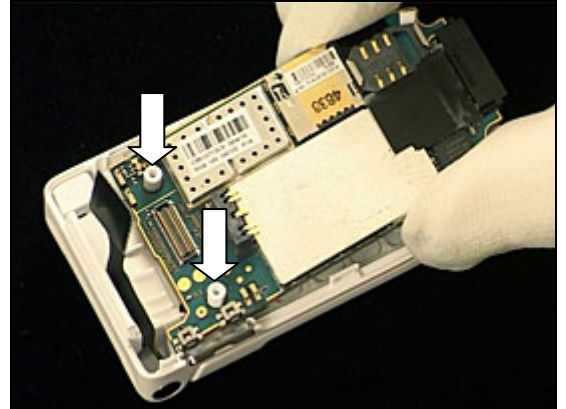
Mount the *keypad* in its proper position with the tweezers and your fingers

and place this part of the *keypad* into its slots.

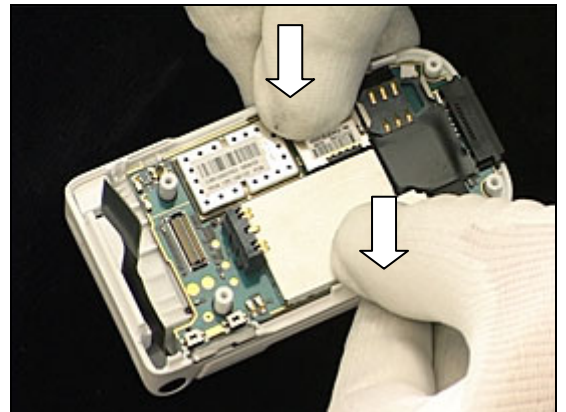


4.2.4 PBA

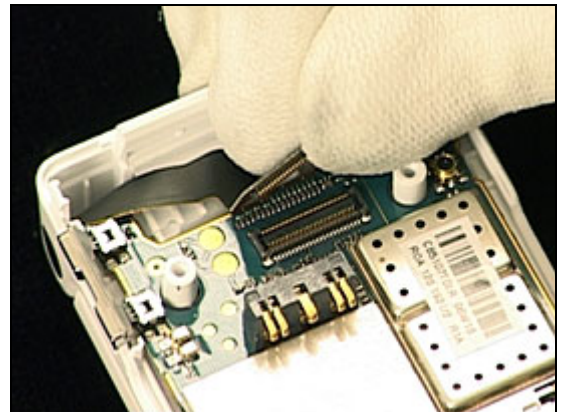
Place the *PBA* onto the two guiding pins of the *lower inner cover*,



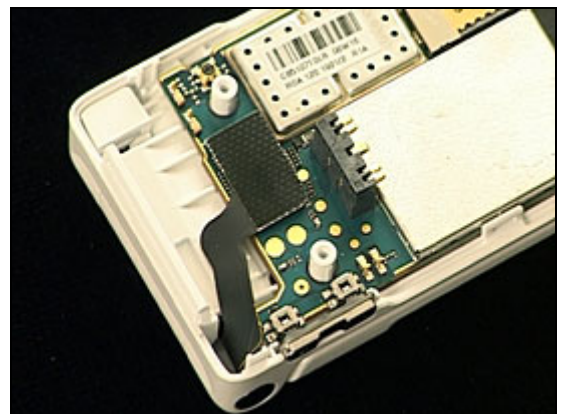
and press to secure its position.



Connect the board-to-board connector,

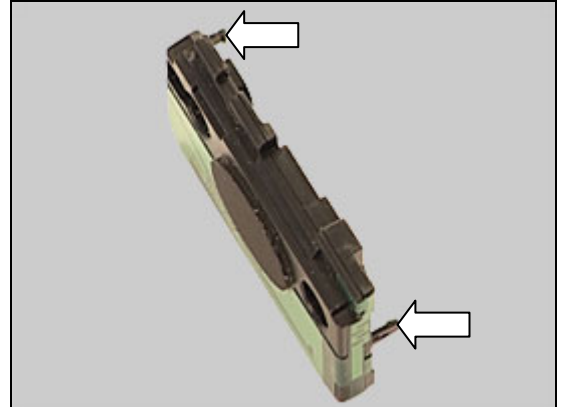


like this.

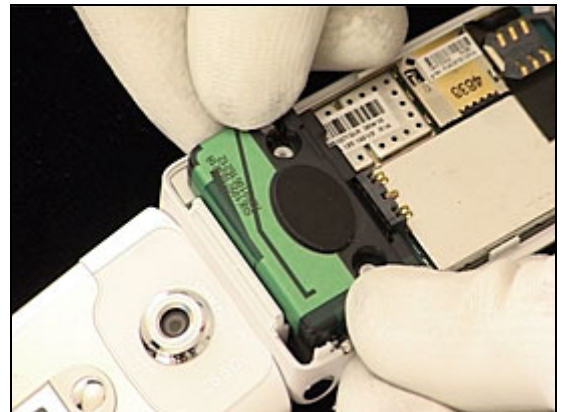


4.2.5 Speaker Box

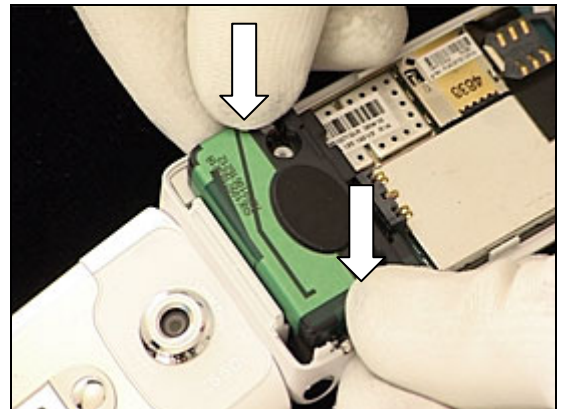
The hooks on the speaker box are used for guidance only and can still be used even if damaged.



Put the *speaker box* in position on the *PBA*,

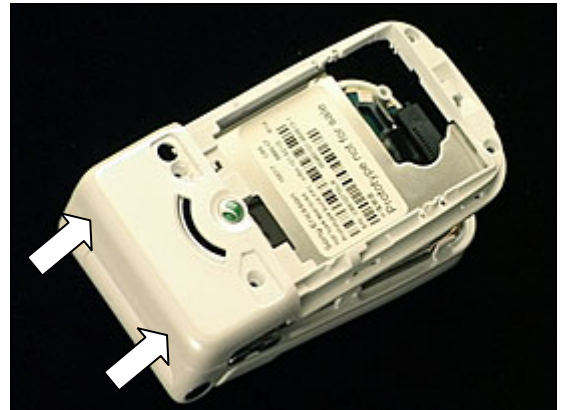


and press on both sides to make it snap.

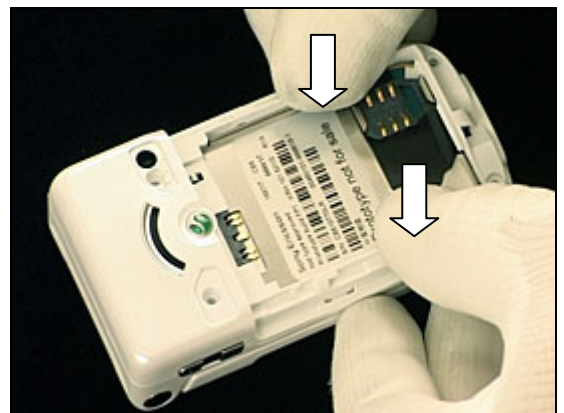


4.2.6 Lower Outer Cover

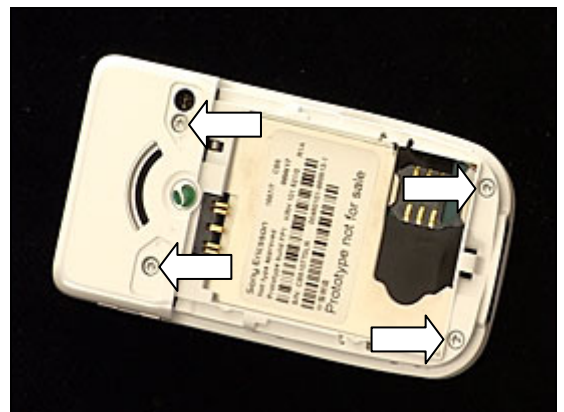
First snap the *upper outer cover* to the *inner outer cover* at the hinge section,



and then snap the remaining sides until the two covers are joined without any gaps.



Use **20 Ncm** torque to tighten the four screws with torx bit no. 6.

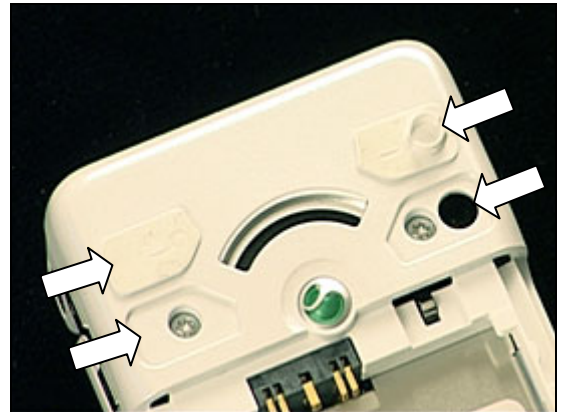


4.2.7 Screw Covers

Clean the surface with isopropyl alcohol.

USE NEW SCREW COVERS!

THE TWO SCREW COVERS ARE NOT IDENTICAL AS INDICATED BY THE ARROWS!



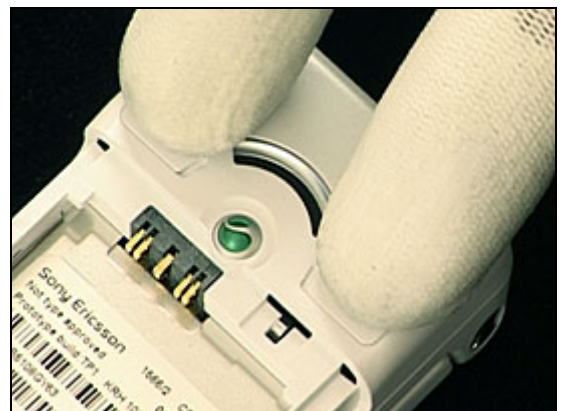
Use the tweezers to place the first *screw cover* in its cavity,



and then the second one.

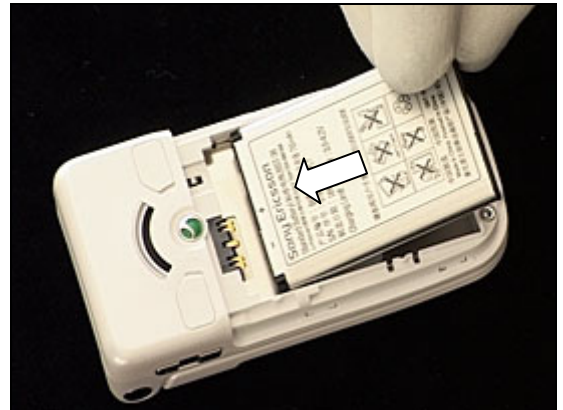


Press with your fingers to secure the attachments.



4.2.8 Battery & Battery Cover

Insert the *battery* and push it towards the top of the phone.



Press it down at the bottom.



Place the *battery cover* on top of the *battery* and push towards the top of the phone,



until the *battery cover* is latched with no gaps.





5 Revision history

| Rev. | Date | Changes / Comments |
|-------------|-------------|---------------------------|
| A | 2006-07-06 | First release |
| B | 2006-09-28 | Z550a Released |
| C | 2006-10-12 | Z558 Released |