

[4] Schematic diagram/Wiring side of P.W.Board

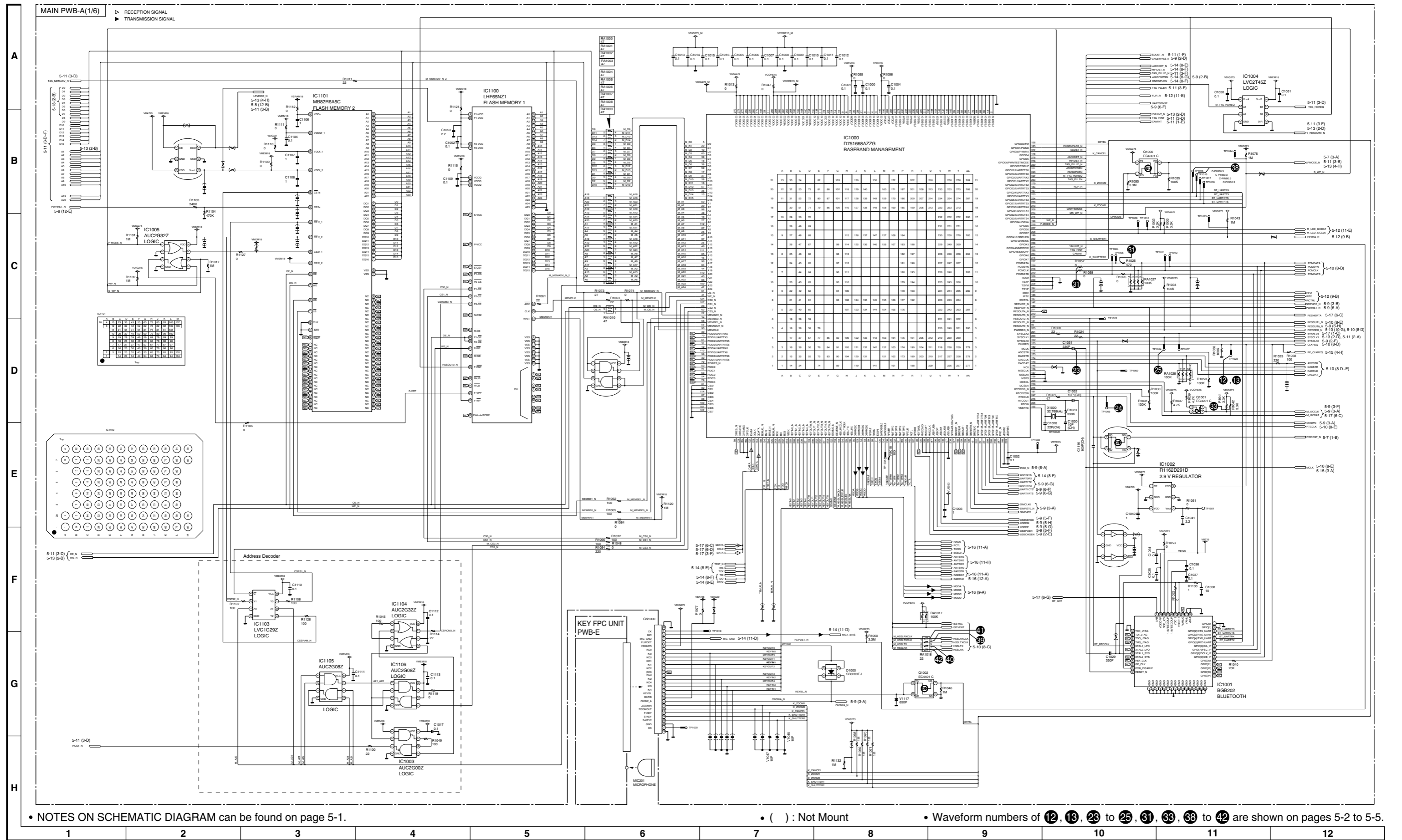


Figure 1 SCHEMATIC DIAGRAM (1/9)

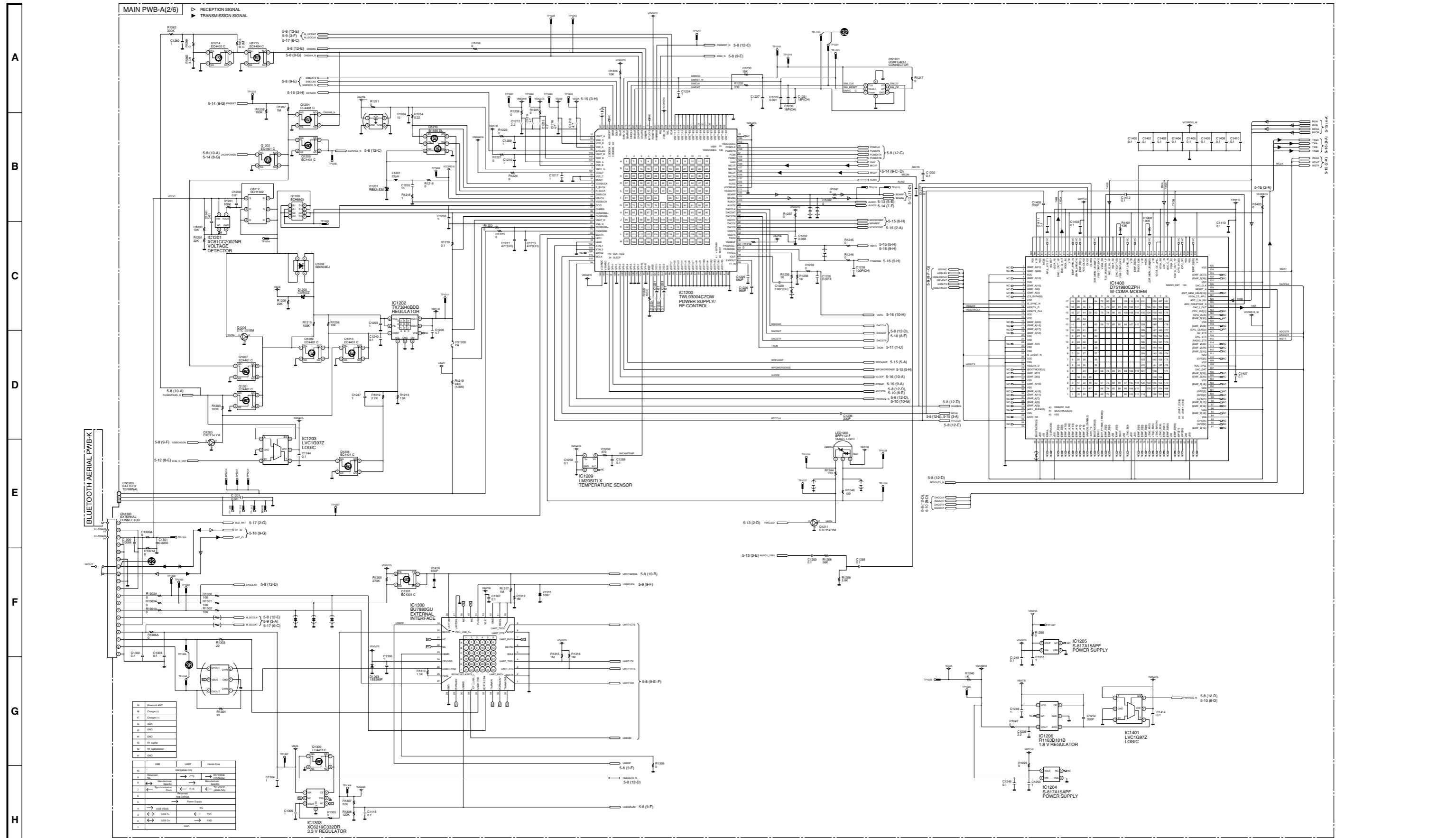
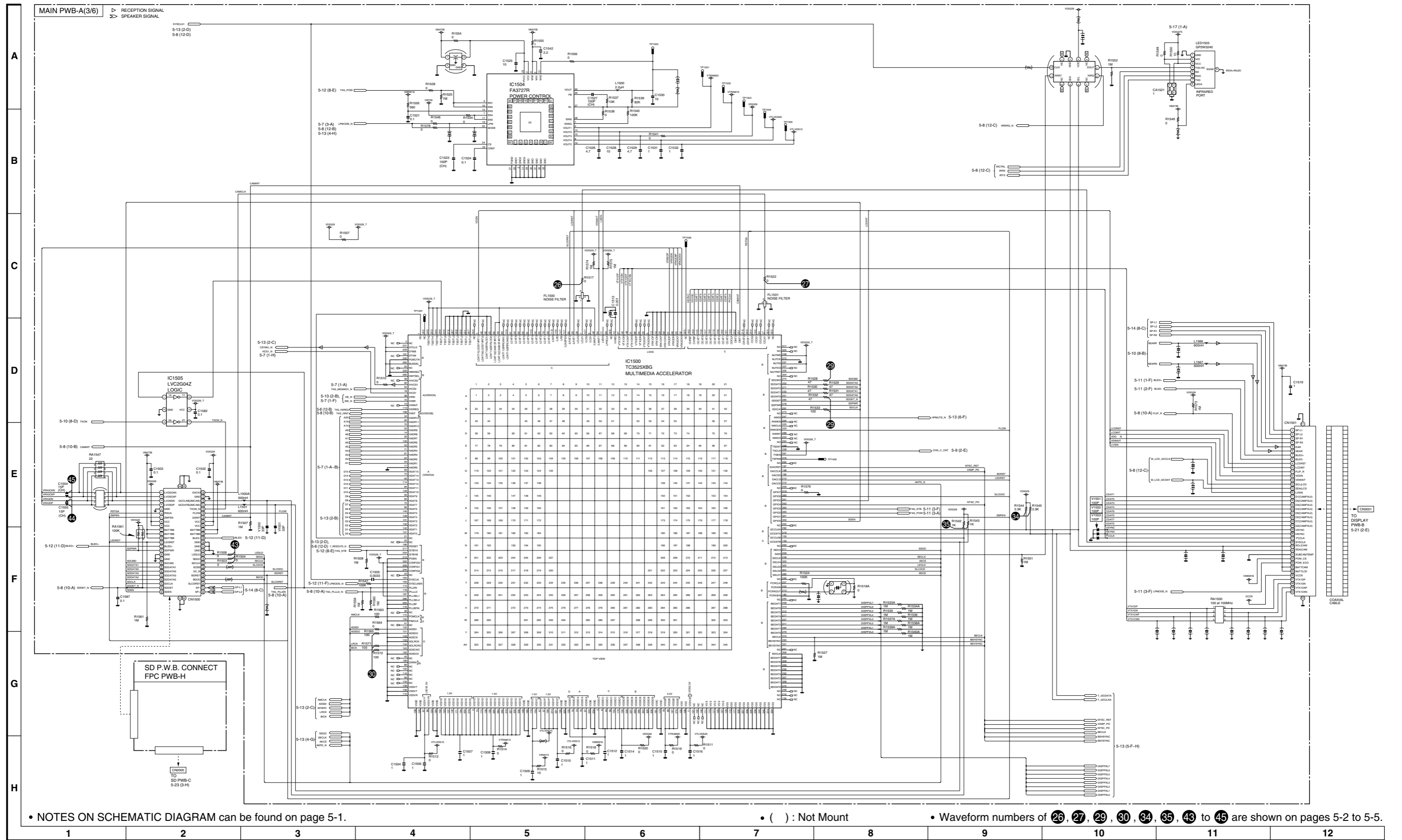


Figure 2 SCHEMATIC DIAGRAM (2/9)



• NOTES ON SCHEMATIC DIAGRAM can be found on page 5-1. • () : Not Mount • Waveform numbers of 26, 27, 29, 30, 34, 35, 43 to 45 are shown on pages 5-2 to 5-5.

Figure 3 SCHEMATIC DIAGRAM (3/9)

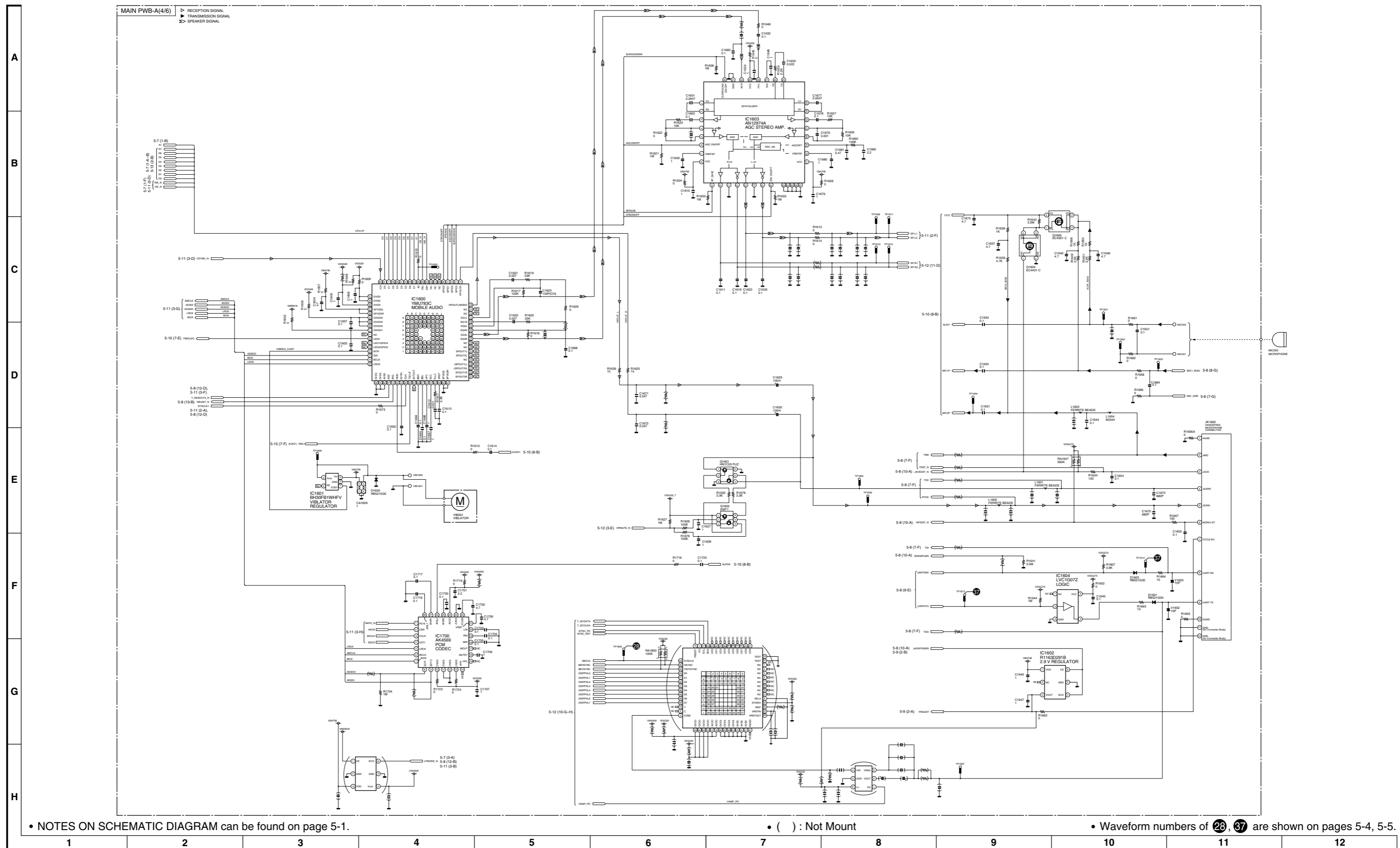
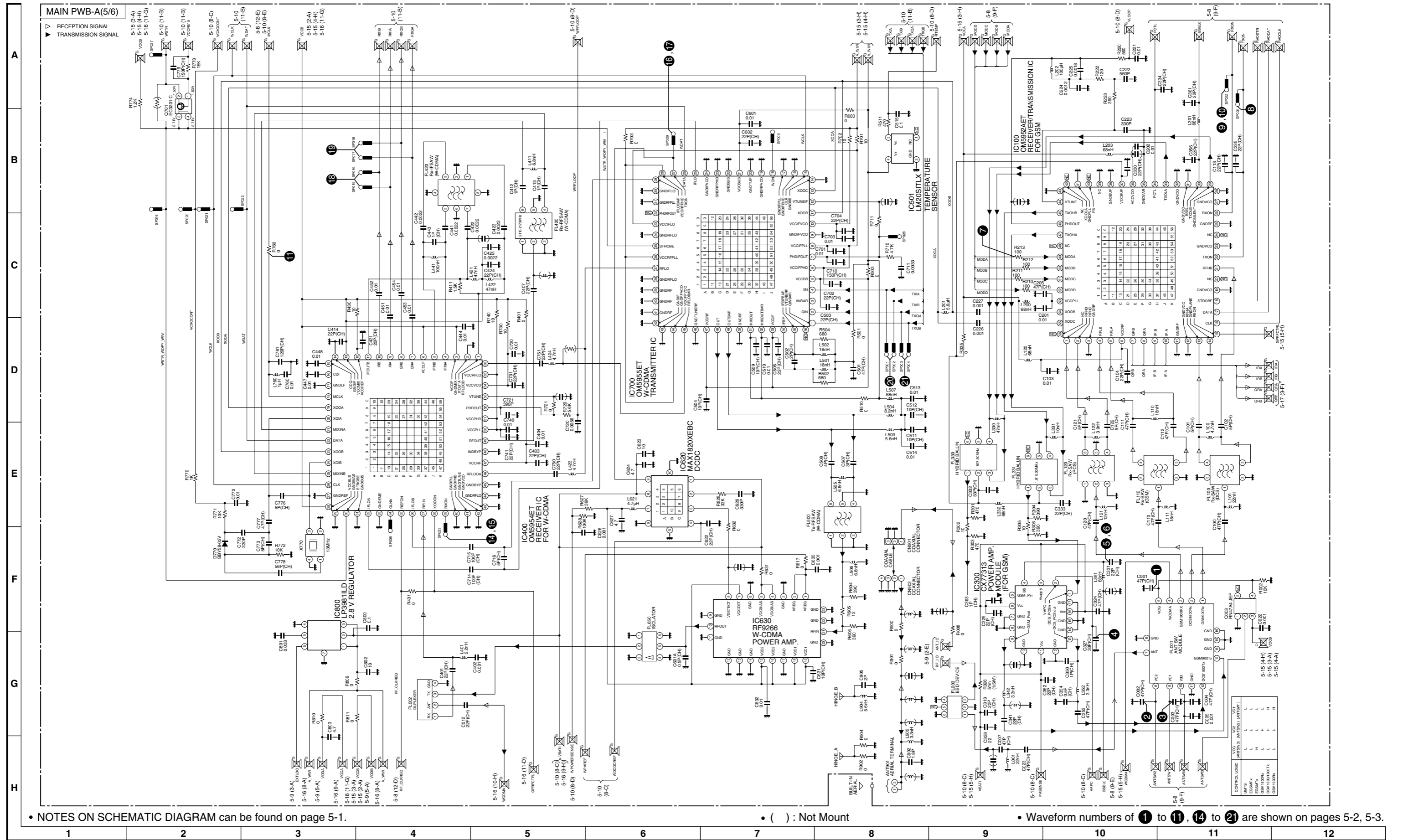


Figure 4 SCHEMATIC DIAGRAM (4/9)



• NOTES ON SCHEMATIC DIAGRAM can be found on page 5-1.

• () : Not Mount

• Waveform numbers of 1 to 11, 14 to 21 are shown on pages 5-2, 5-3.

Figure 5 SCHEMATIC DIAGRAM (5/9)

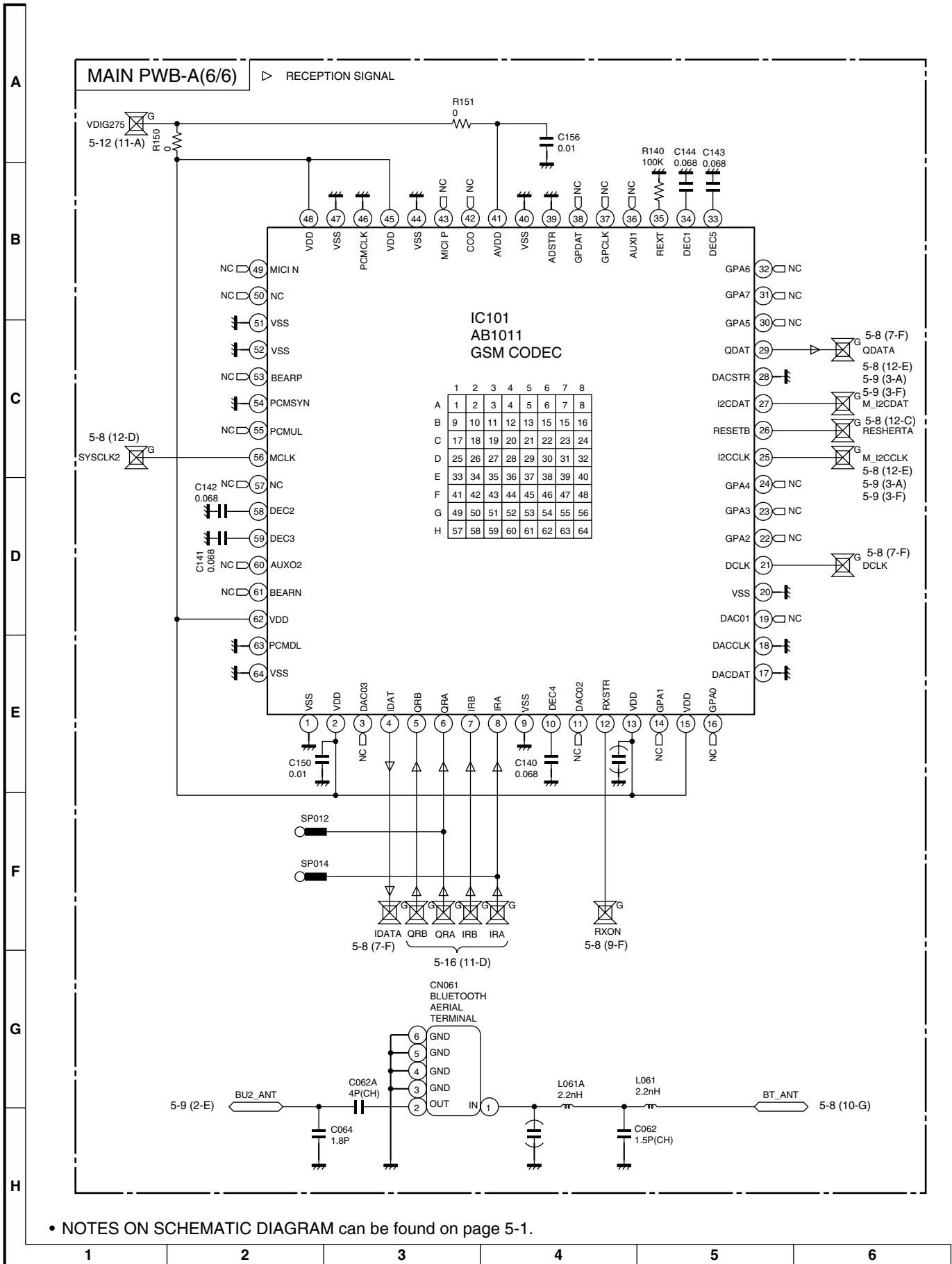


Figure 6 SCHEMATIC DIAGRAM (6/9)

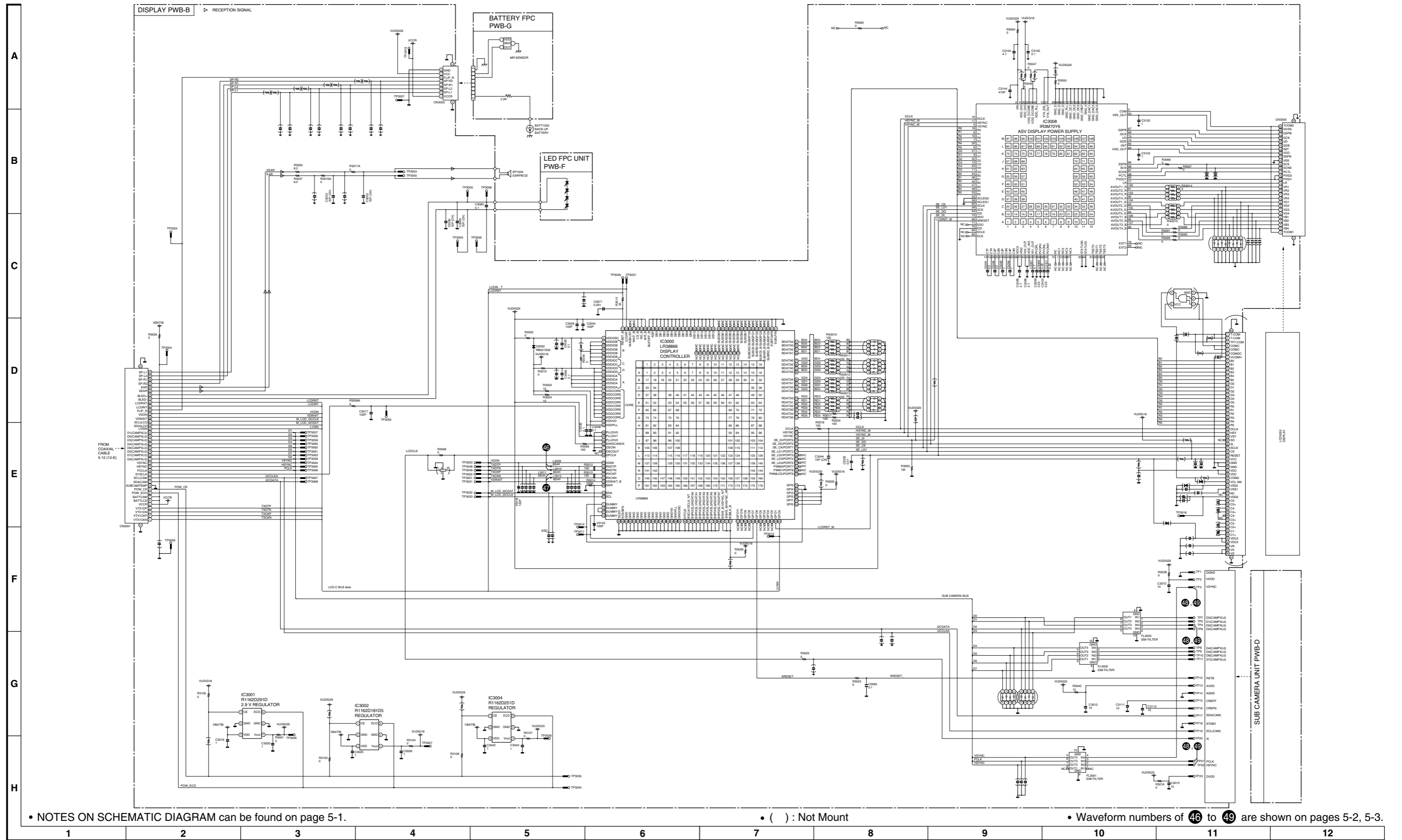


Figure 10 SCHEMATIC DIAGRAM (8/9)

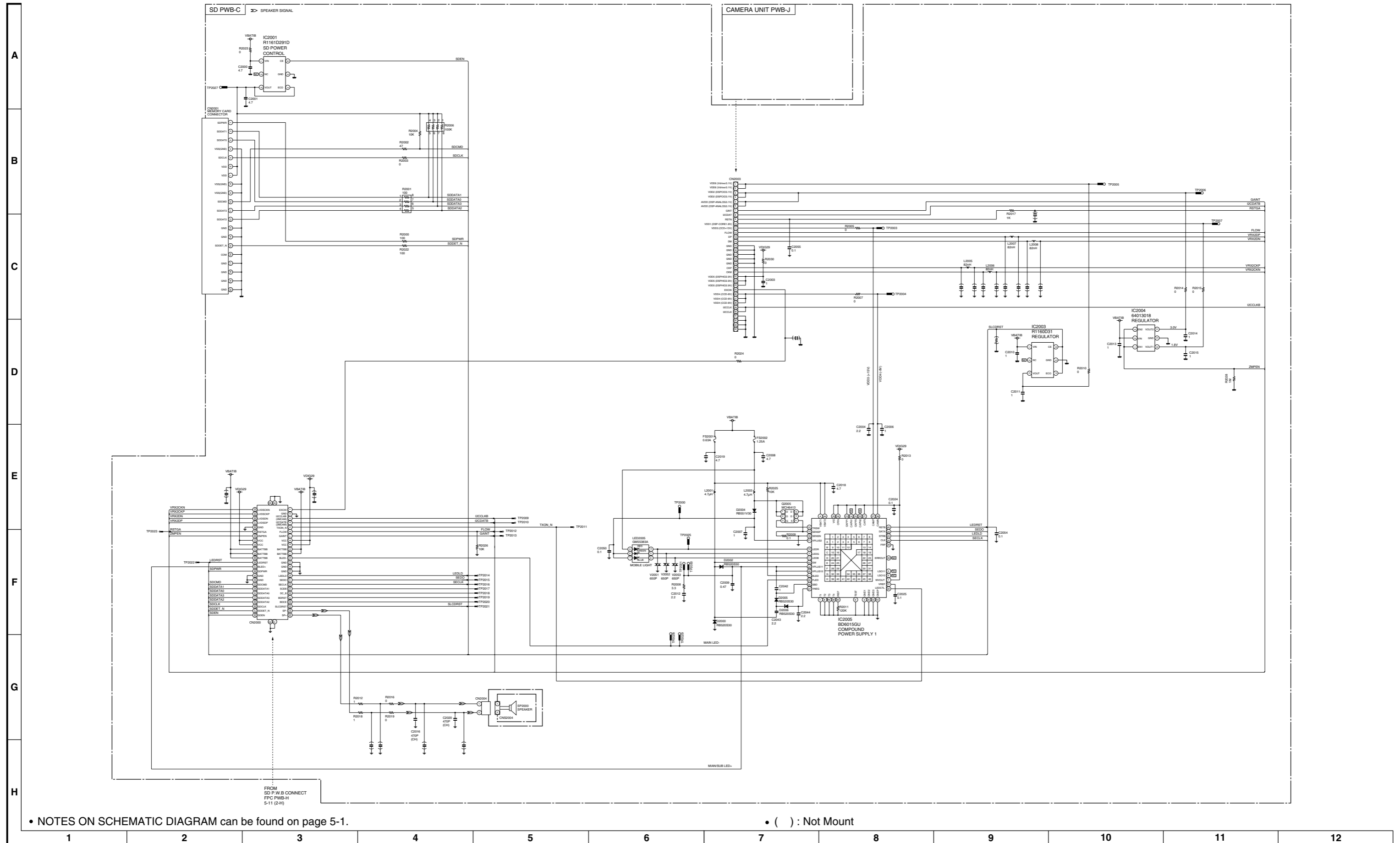


Figure 11 SCHEMATIC DIAGRAM (9/9)

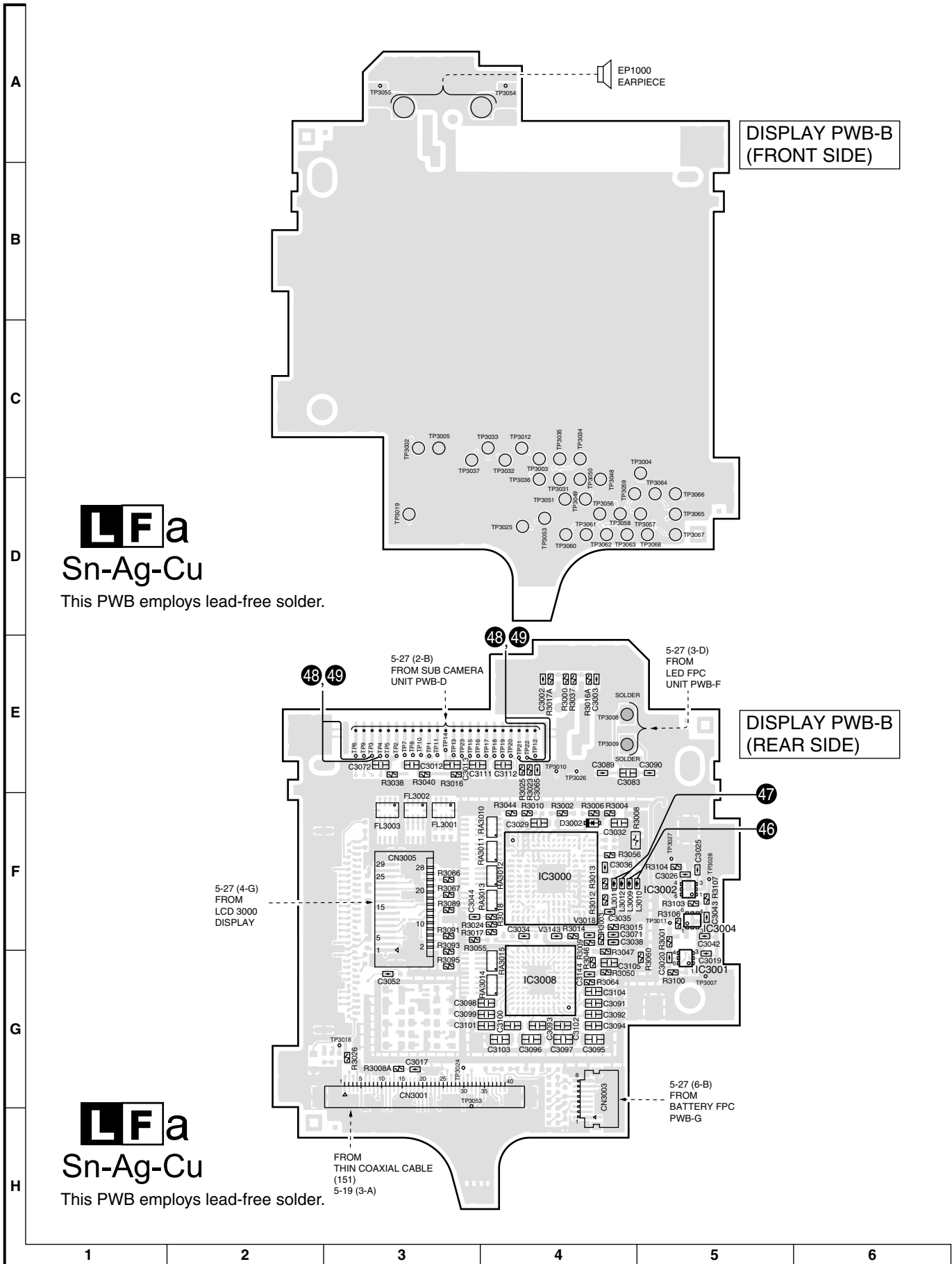
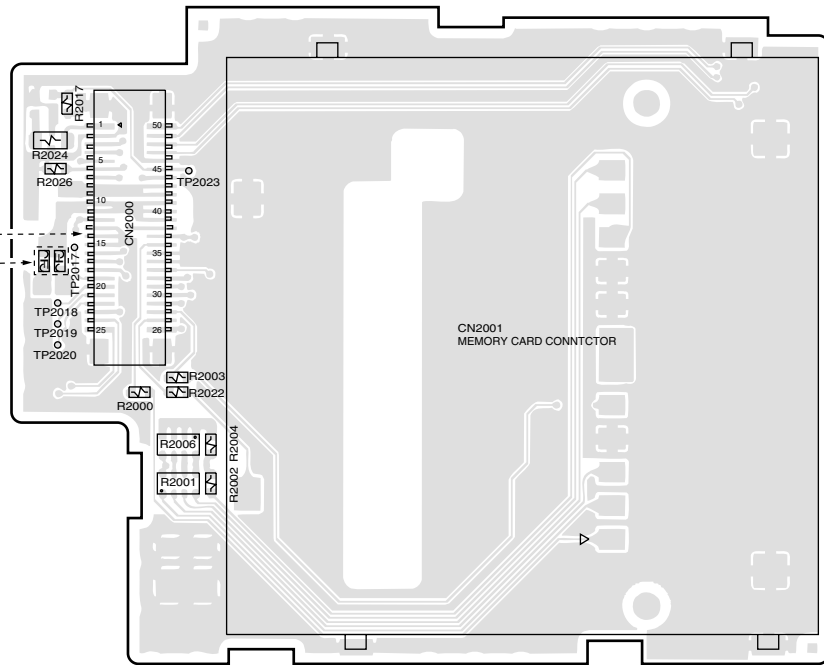


Figure 12 WIRING SIDE P.W.BOARD (3/5)

SD PWB-C
(FRONT SIDE)

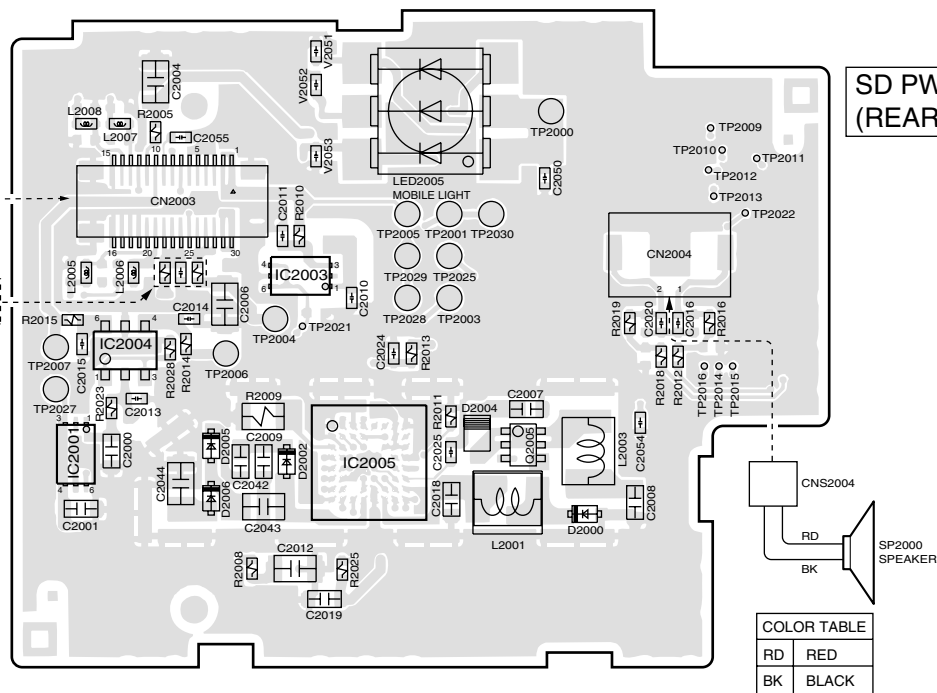


5-27 (2-C)
FROM
SD P.W.B.
CONNECT FPC
PWB-H

LFa
Sn-Ag-Cu

This PWB employs lead-free solder.

SD PWB-C
(REAR SIDE)



5-27 (6-C)
FROM
CAMERA
UNIT
PWB-J

COLOR TABLE	
RD	RED
BK	BLACK

LFa
Sn-Ag-Cu

This PWB employs lead-free solder.

• Waveform numbers of (46), (47), (49), (50) are shown on page 5-6.

7	8	9	10	11	12
---	---	---	----	----	----

Figure 13 WIRING SIDE P.W.BOARD (4/5)