

Service Repair Documentation

Level 2.5 – CFX 65



Release	Date	Department	Notes to change
1.0	10.11.2004	ICM MP CCQ GRM T	New document
1.1	09.12.2004	ICM MP CCQ GRM T	Code Changes

1	
Service Repair Documentation Level 2.5 - CFX65	V1.1

Introduction

This Service Repair Documentation is intended to carry out repairs on Siemens repair level 2.5. The described failures shall be repaired in Siemens authorized local workshops only.

All repairs have to be carried out in an ESD protected environment and with ESD protected equipment/tools. For all activities the international ESD regulations have to be considered.

Assembling/ disassembling has to be done according to the latest CFX65 Level 2 repair documentation. It has to be ensured that every repaired mobile phone is checked according to the latest released General Test Instruction document (both documents are available in the Technical Support section of the C-market).

If you have any questions regarding the repair procedures or technical questions do not hesitate to contact our technical support team in Kamp-Lintfort, Germany:

Scrap Handling: All Scrap information given in this manual are related to the SCRAP-Rules and instructions.

Attention: Consider soldering rules, avoid excessive heat

Tel.: +49 2842 95 4666

Fax: +49 2842 95 4302

e-mail: st-support@klf.siemens.de

2	
Service Repair Documentation Level 2.5 - CFX65	V1.1

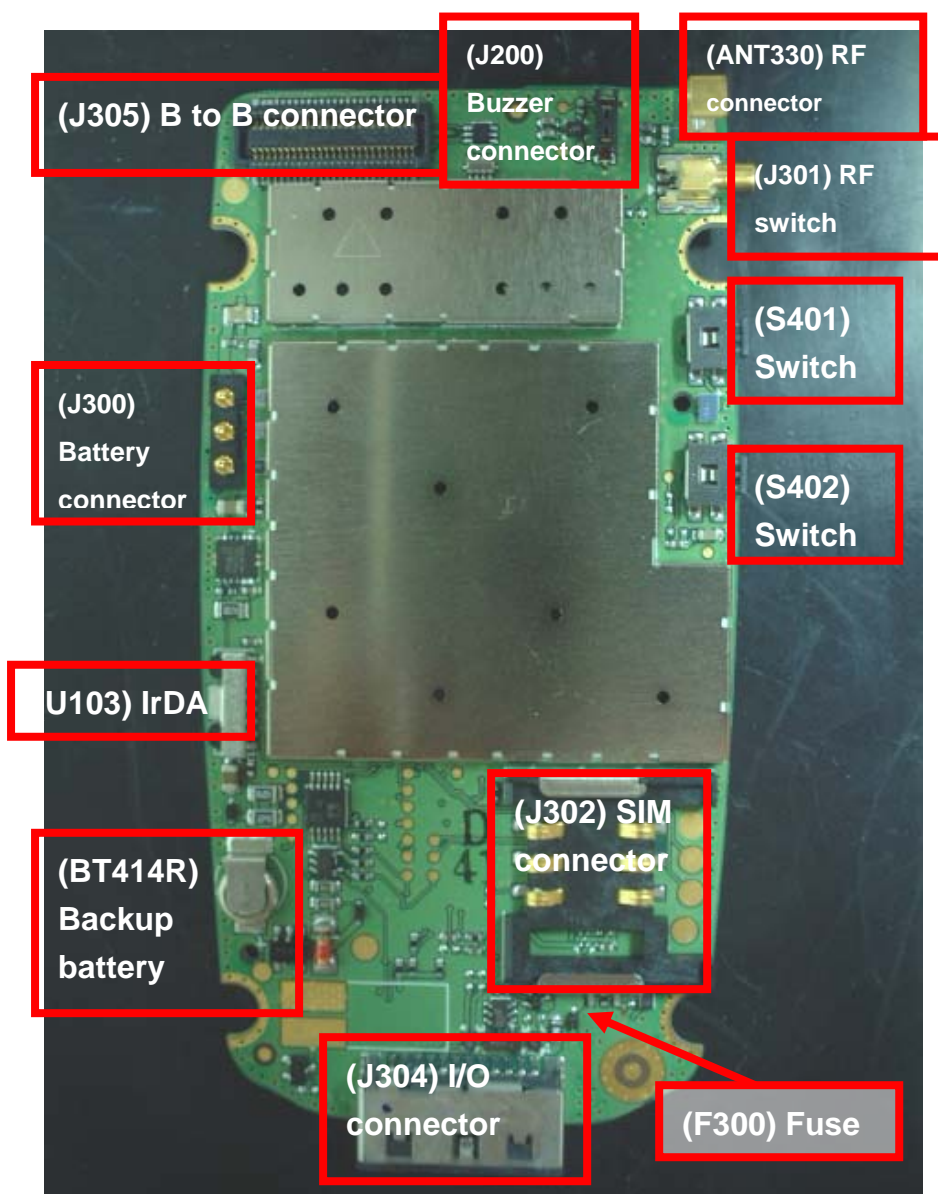
Table of content

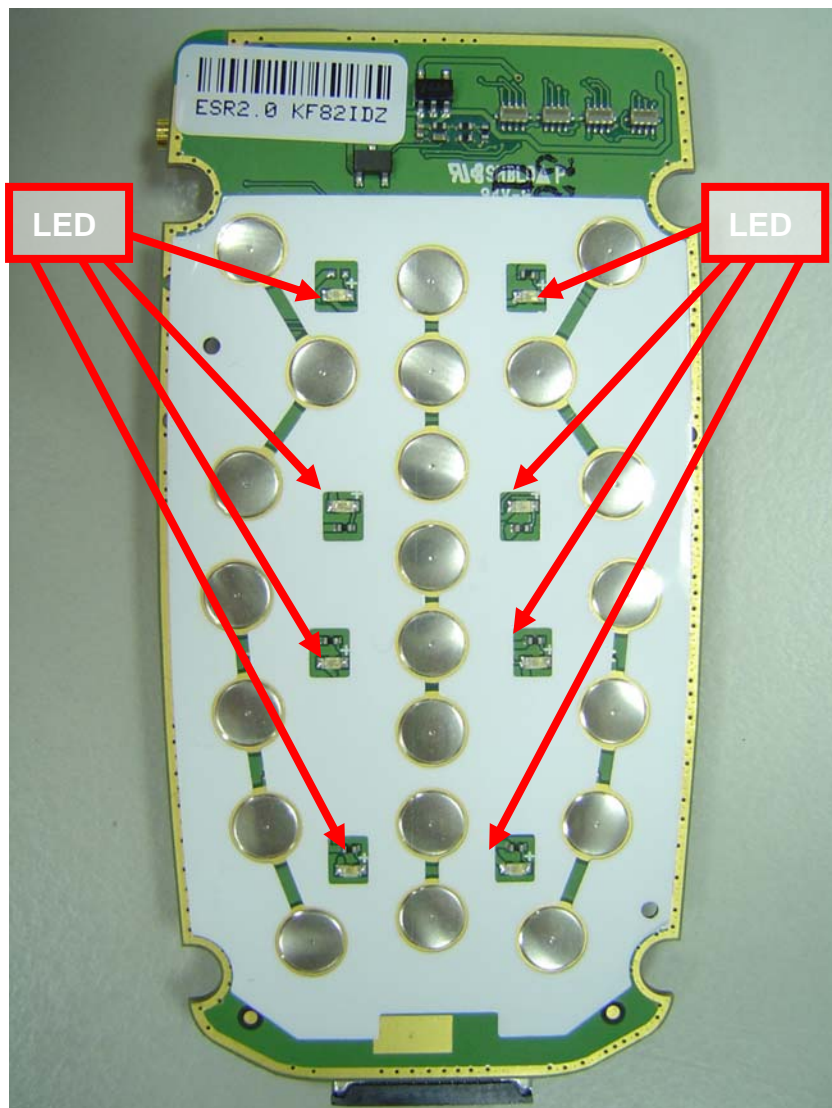
CFX 65 BOARD LAYOUT	4
LCM LAYOUT	6
1. B TO B CONNECTOR (J305)	7
2. RF SWITCH (ANT300)	8
3. ANTENNA SPRING (J301)	9
4. SPEAKER CONNECTOR (J200).....	10
5. SIDE KEY SWITCH (S400,S401).....	11
6. SIM READER (J302)	12
7. I/O CONNECTOR (J304).....	13
8. BACKUP BATTERY (BT414R).....	14
9. IRDA (U103)	15
10. BATTERY CONNECTOR (J300).....	16
11. FUSE (F300).....	17
12. LED ON PCBA	18
13. CAMERA CONNECTOR.....	19
14. CAMERA MODULE	20
15. FLASH LED.....	21

CFX 65 board layout

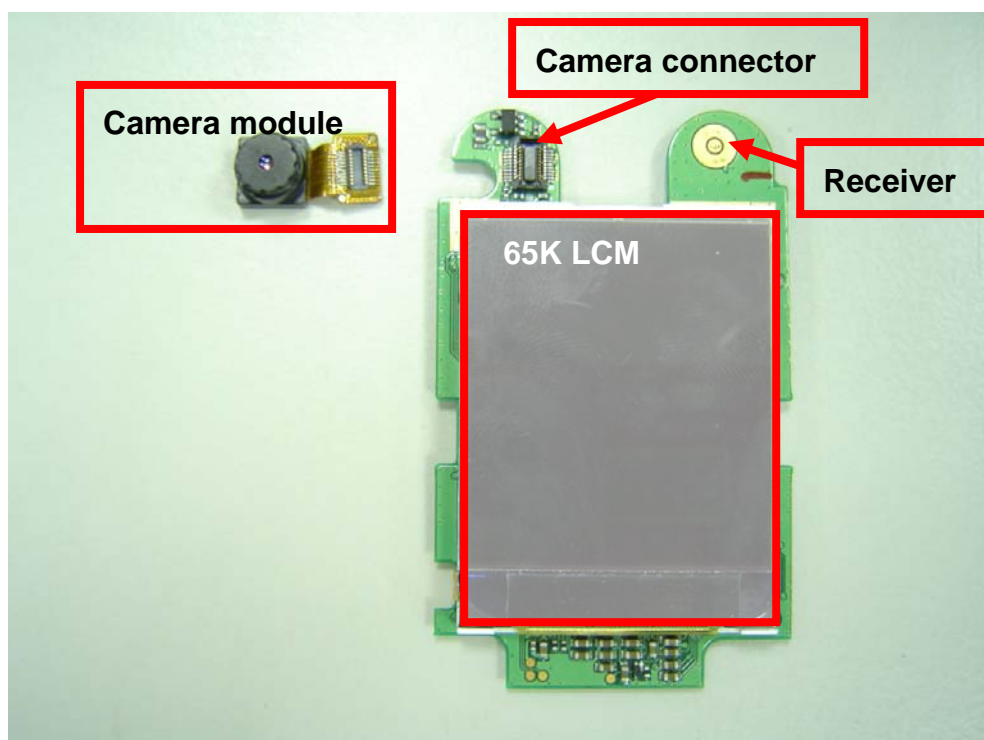
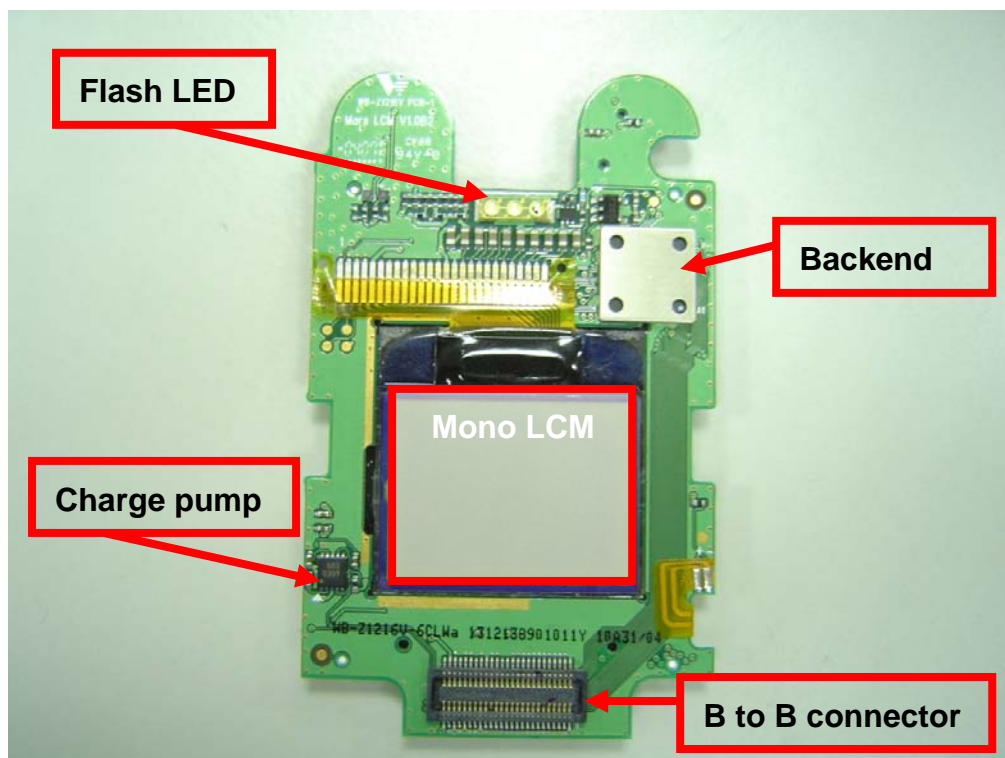
Jigs, Tools and working materials for all described repairs:

- hot air blower
- soldering iron
- a pair of tweezers
- flux
- solder



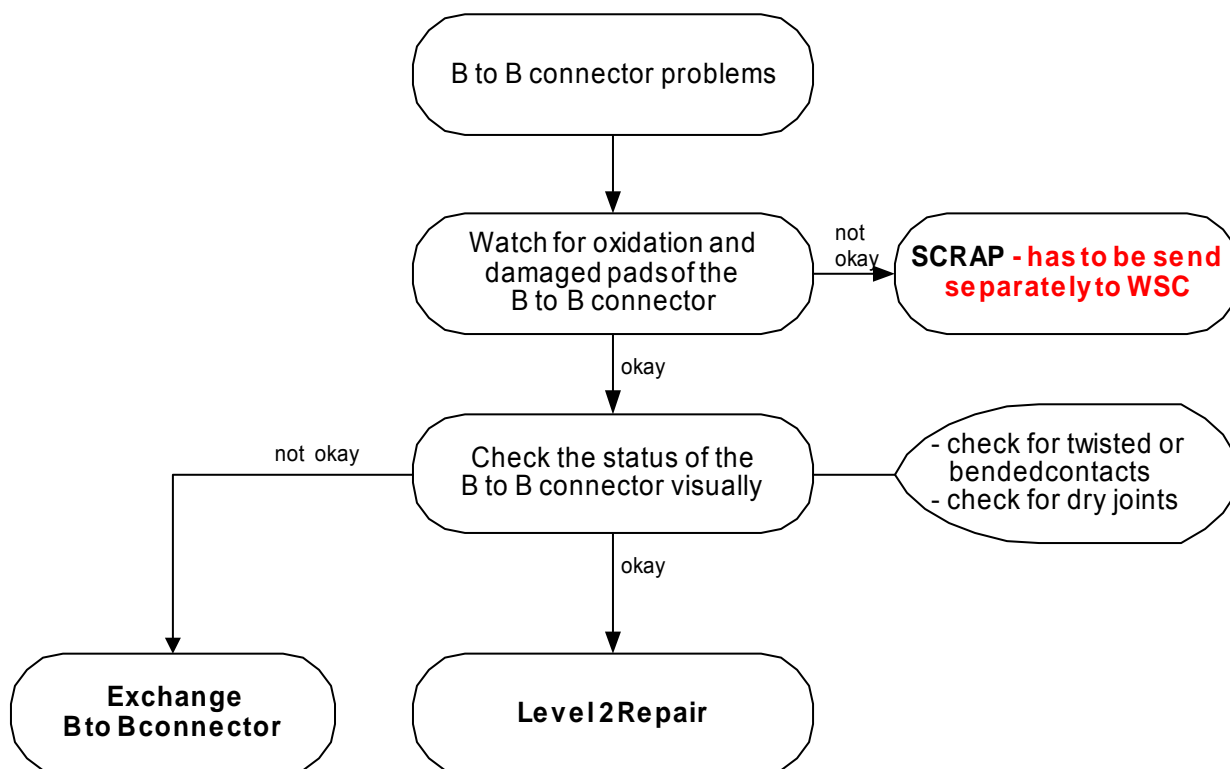


LCM layout



1. B to B connector (J305)

Fault Symptoms	
Customer	GRT
No display but main board works Camera and/ or earpiece does not work	No GRT support



Connector board to board

Use soldering iron to remove defective component. Avoid excessive heat! Watch surrounding components! Resolder new component afterwards.

E-commerce order number: L50634-Z97-C377

Soldering temperature: 240 - 255°C

IRIS Diagnose Code: BA000 Accessories Camera

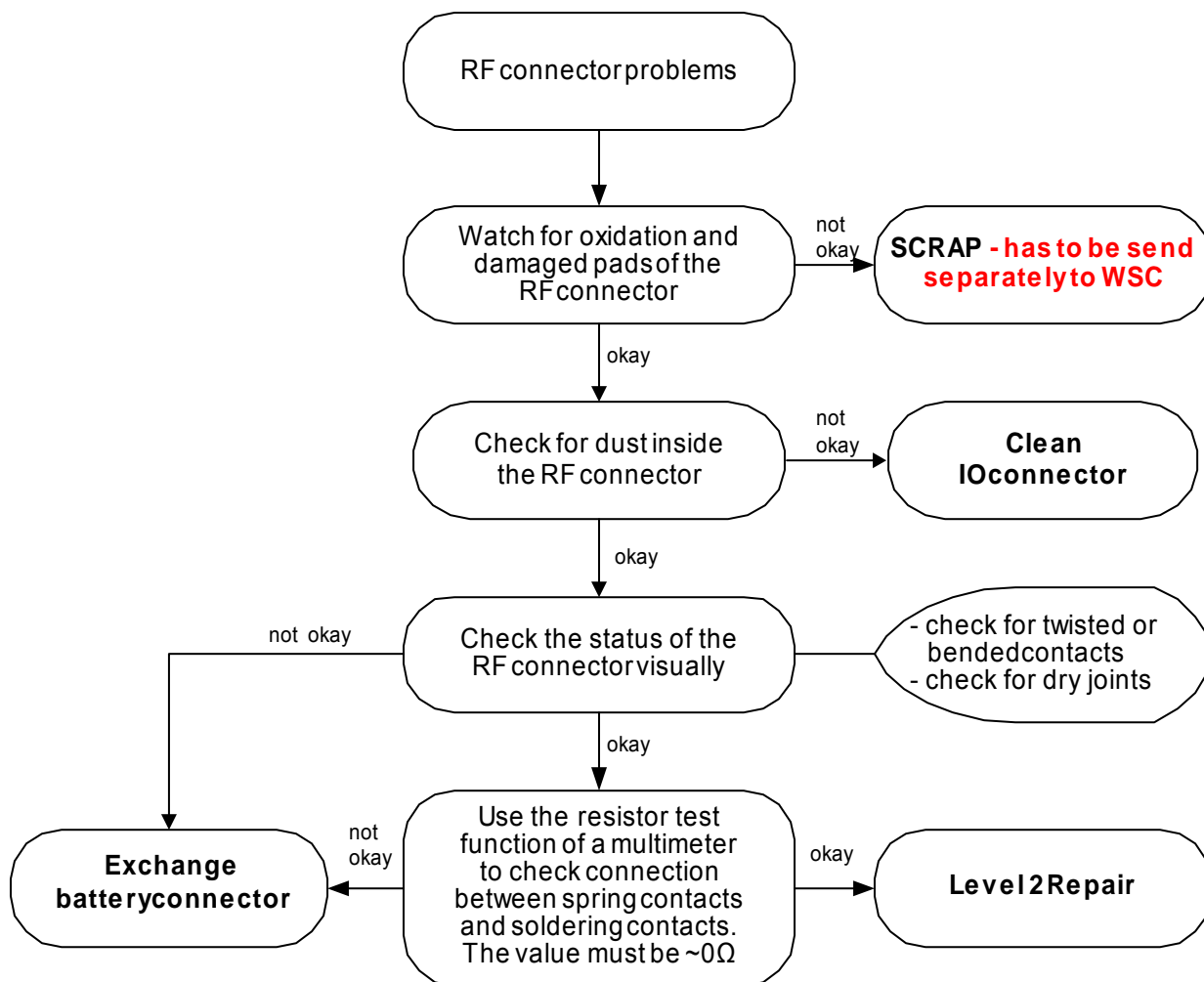
21000 Display Performance

22000 Display Background Illumination

7	
Service Repair Documentation Level 2.5 - CFX65	V1.1

2. RF switch (ANT300)

Fault Symptoms	
Customer	GRT
Network search	No GRT support
No location update	No GRT support



Connector RF

Use hot air blower to remove defective component. Avoid excessive heat! Watch surrounding components! Resolder new component afterwards.

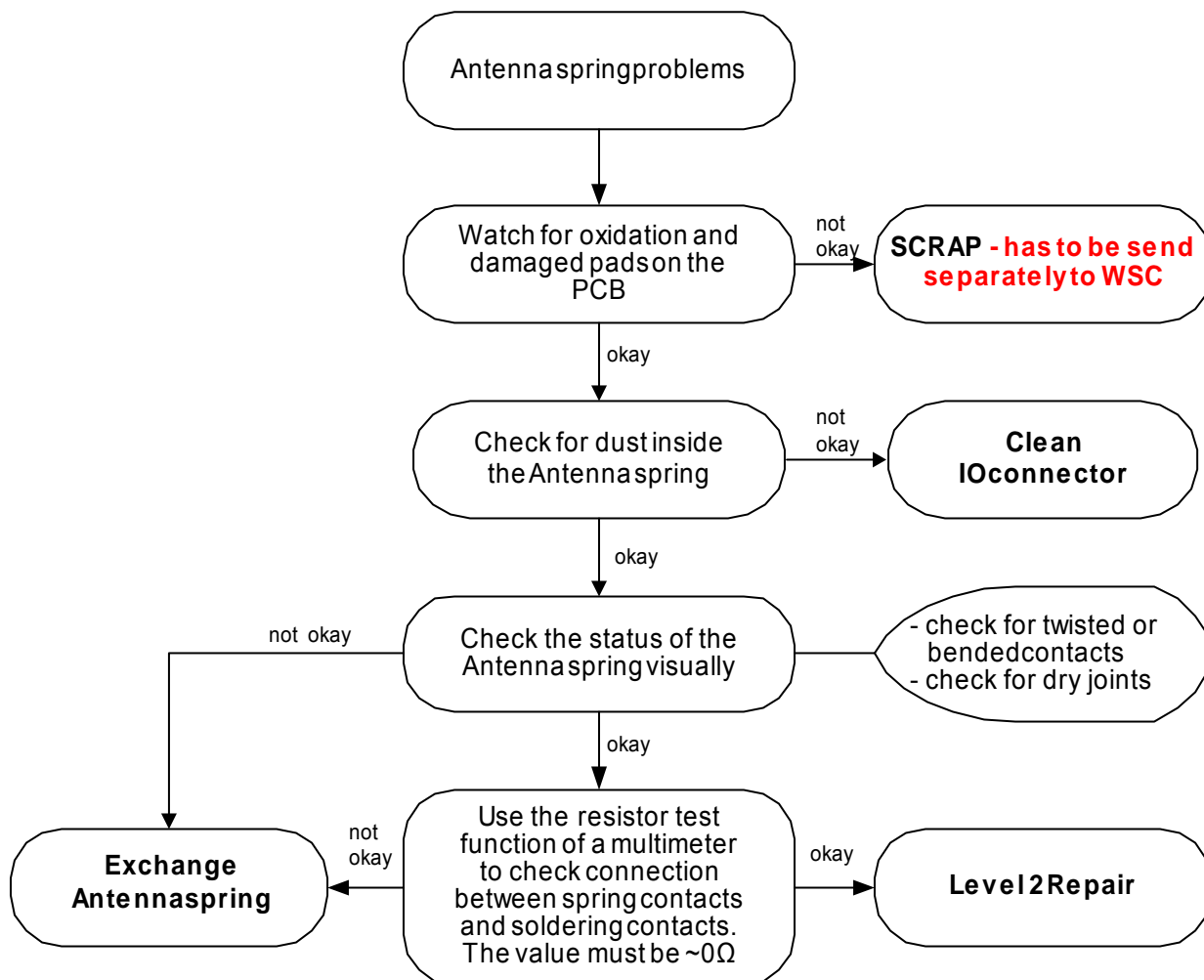
E-commerce order number: L50634-Z97-C375

Soldering temperature: 240 - 255°C

IRIS Diagnose Code: 45100 Interface / Antenna connector / No function

3. Antenna Spring (J301)

Fault Symptoms	
Customer	GRT
Poor network	No GRT support
No network	No GRT support



Antenna Spring

Use hot air blower to remove defective component. Avoid excessive heat! Watch surrounding components! Resolder new component afterwards.

E-commerce order number: L50658-A136-B16

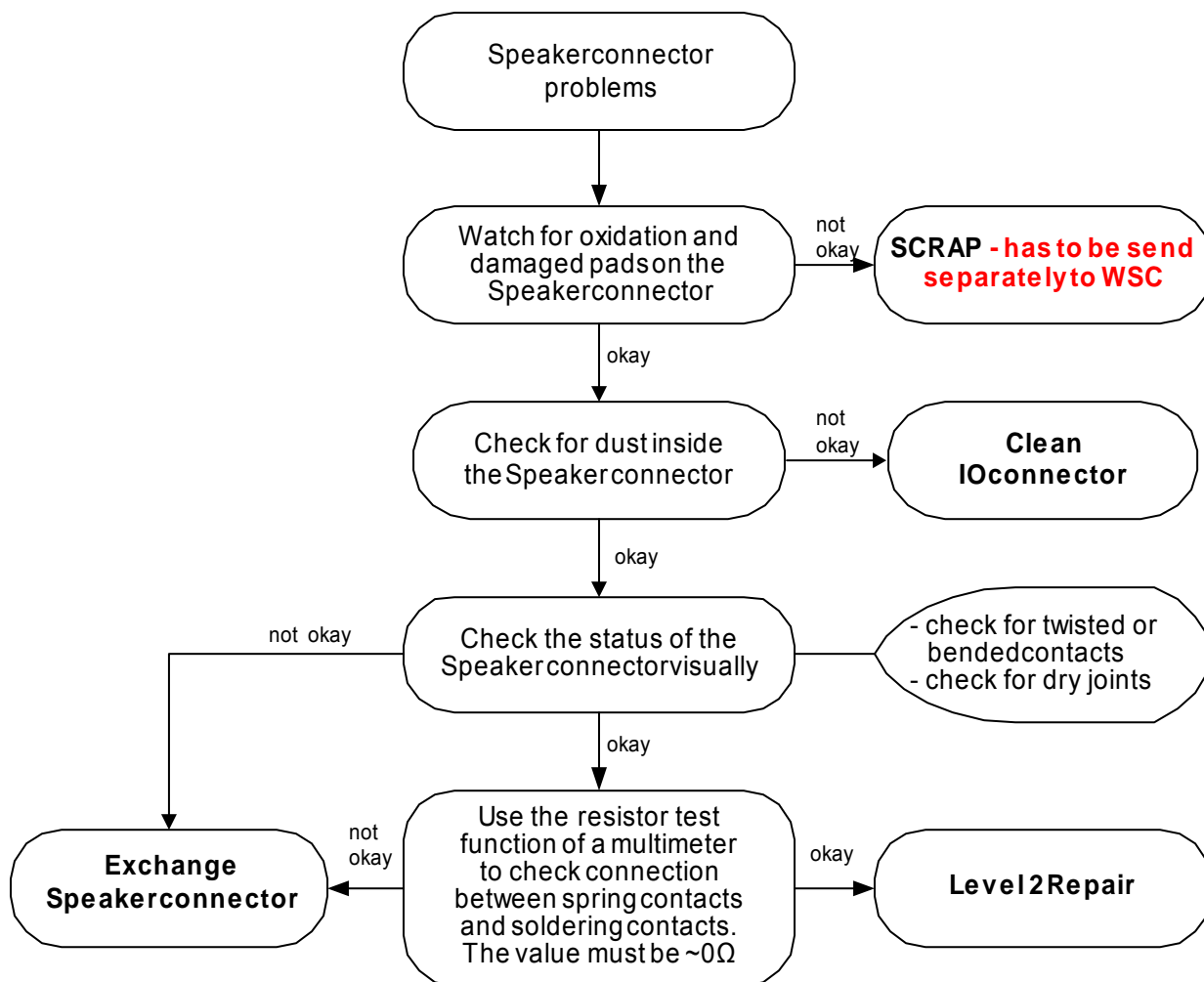
Soldering temperature: 240 - 255°C

IRIS Diagnose Code: 83140 TX power fault internal antenna

9	
Service Repair Documentation Level 2.5 - CFX65	V1.1

4. Speaker connector (J200)

Fault Symptoms	
Customer	GRT
No sound from speaker	No GRT support
The speaker is sometimes barely to hear	No GRT support



Speaker connector

Use soldering iron to remove defective component. Avoid excessive heat! Watch surrounding components! Resolder new component afterwards.

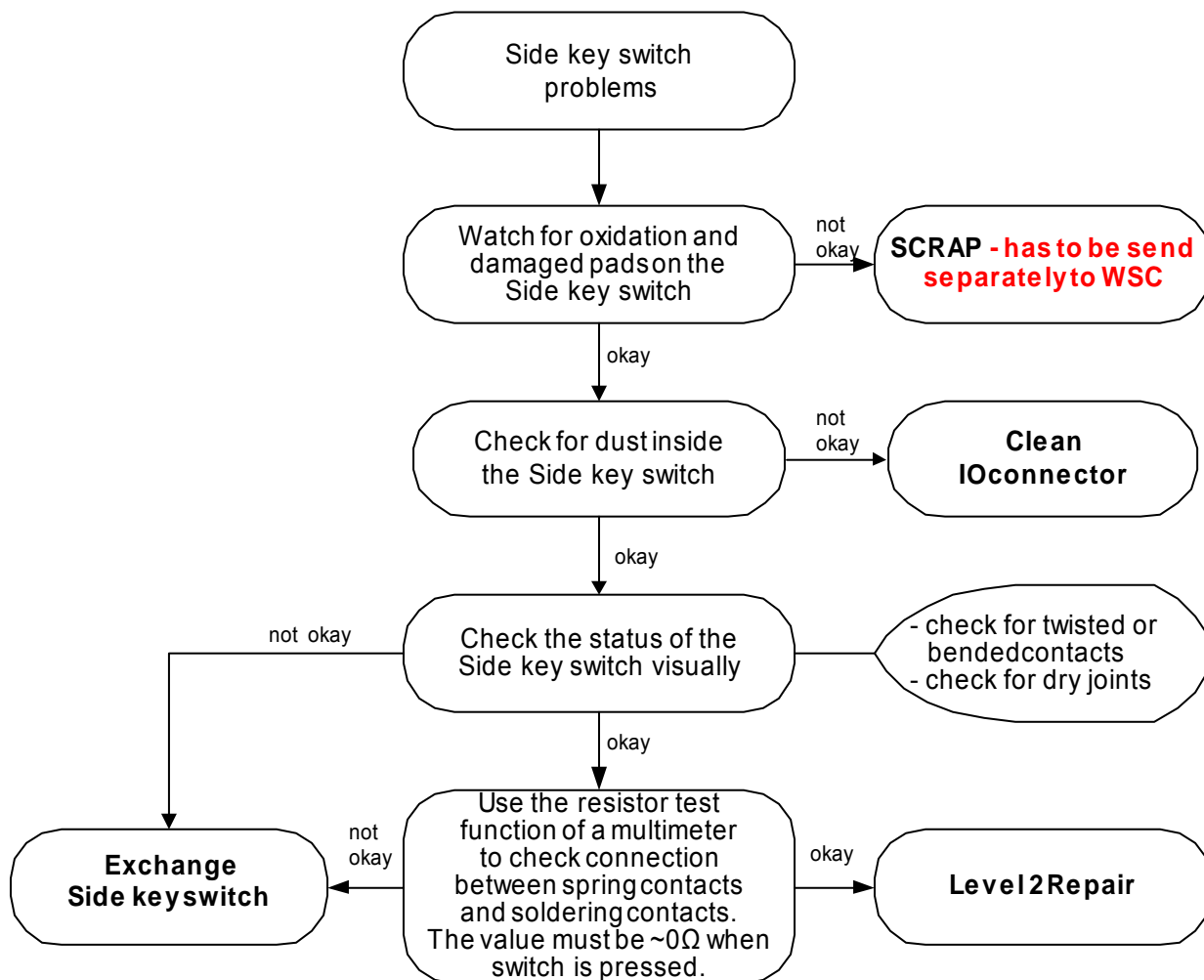
E-commerce order number: L50634-Z97-C381

Soldering temperature: 240 - 255°C

IRIS Diagnose Code: 72110 Accustics

5. Side key switch (S400,S401)

Fault Symptoms	
Customer	GRT
No function while pressing	No GRT support
Pressing feeling is bad	No GRT support



Side key switch

Use hot air blower to remove defective component. Avoid excessive heat! Watch surrounding components! Resolder new component afterwards.

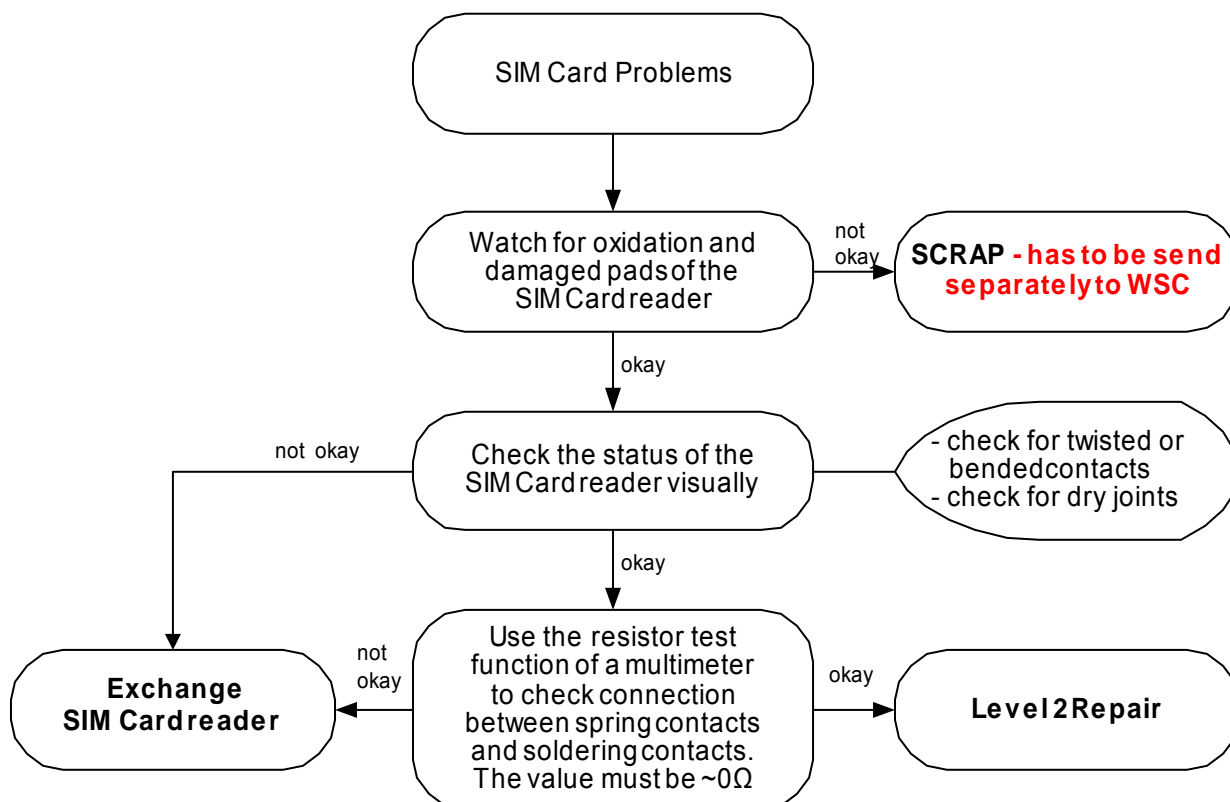
E-commerce order number: L50615-Z77-C240

Soldering temperature: 240 - 255°C

IRIS Diagnose Code: 34100 Keys / Side

6. SIM reader (J302)

Fault Symptoms	
Customer	GRT
Handset does not accept SIM	No GRT support
Can not read SIM	No GRT support



SIM Reader

Use soldering iron to remove defective component. Avoid excessive heat! Watch surrounding components! Resolder new component afterwards.

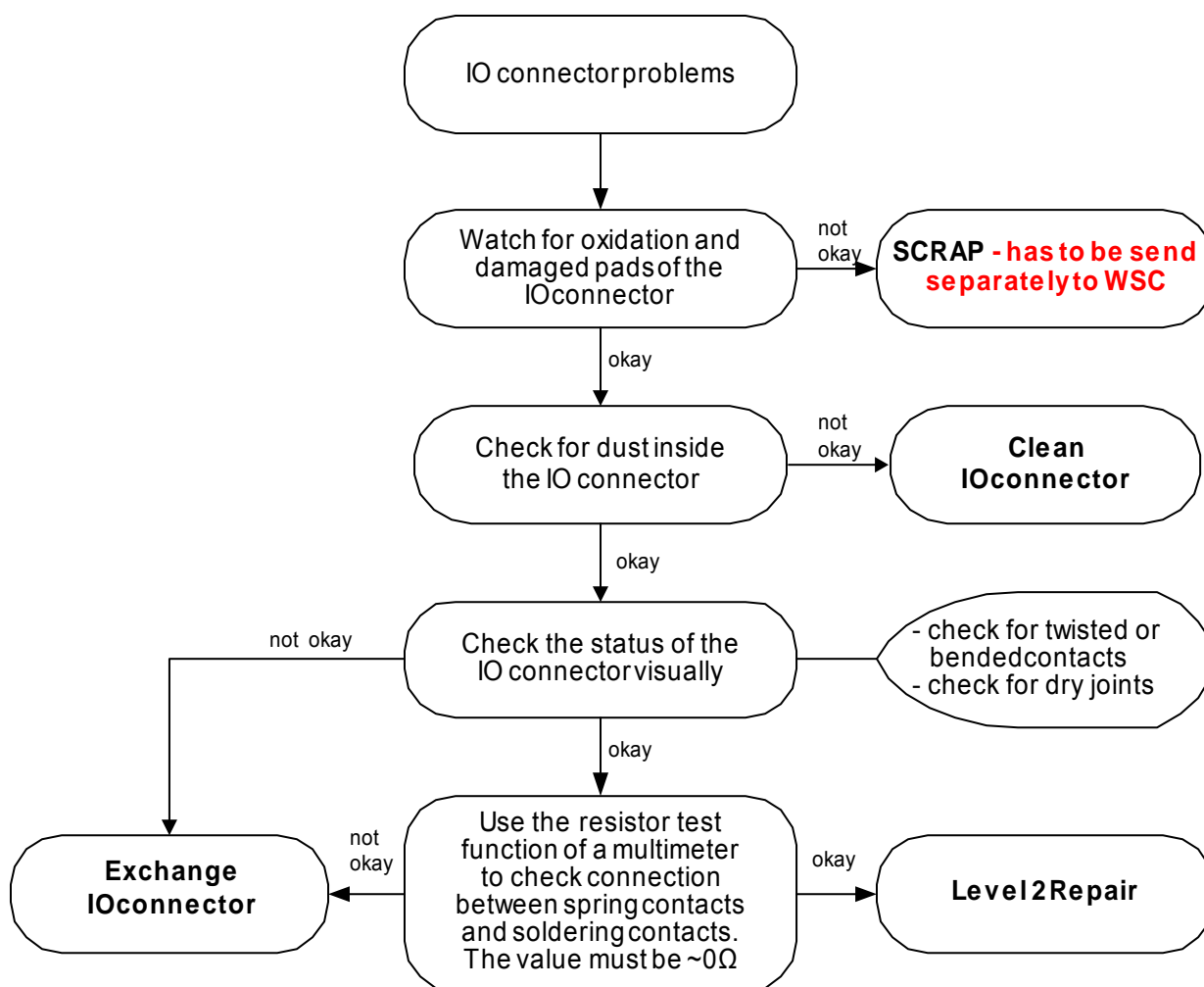
E-commerce order number: L50634-Z97-C374

Soldering temperature: 240 - 255°C

IRIS Diagnose Code: 43300 Interface / SIM Cardreader / Mechanical Damage

7. I/O connector (J304)

Fault Symptoms	
Customer	GRT
Charging problems	No GRT support
Problems with external loudspeaker or microphone when using a car kit	No GRT support
Problems with accessories connected at the I/O connector	No GRT support



Use soldering iron to remove defective component. Avoid excessive heat! Watch surrounding components! Resolder new component afterwards.

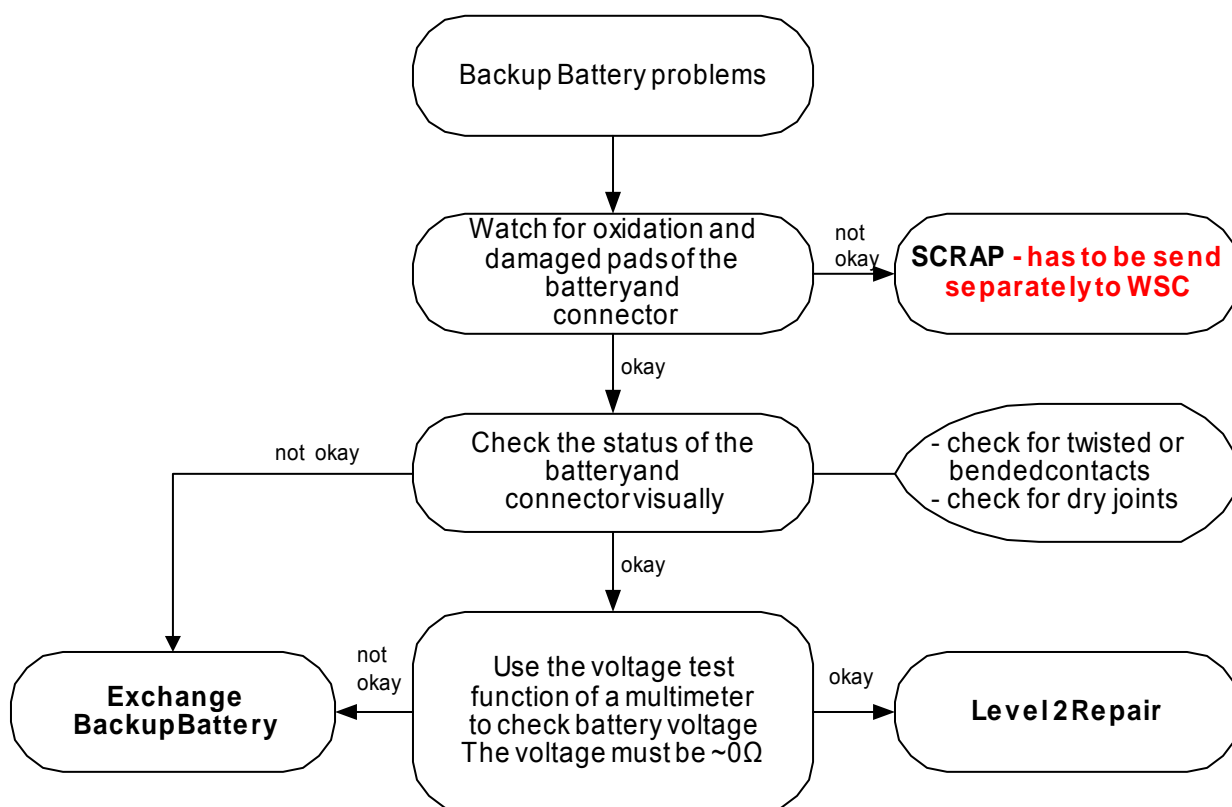
E-commerce order number: L50634-Z97-C375

Soldering temperature: 240 - 255°C

IRIS Diagnose Code: 46100 Interface/Charging connector/ Mechanical damage

8. Backup battery (BT414R)

Fault Symptoms	
Customer	GRT
After removing and reassembling the battery, the time is not correct or default value.	No GRT support



Backup battery

Use soldering iron to remove defective component. Avoid excessive heat! Watch surrounding components! Resolder new component afterwards.

E-commerce order number: L50645-K1310-X320

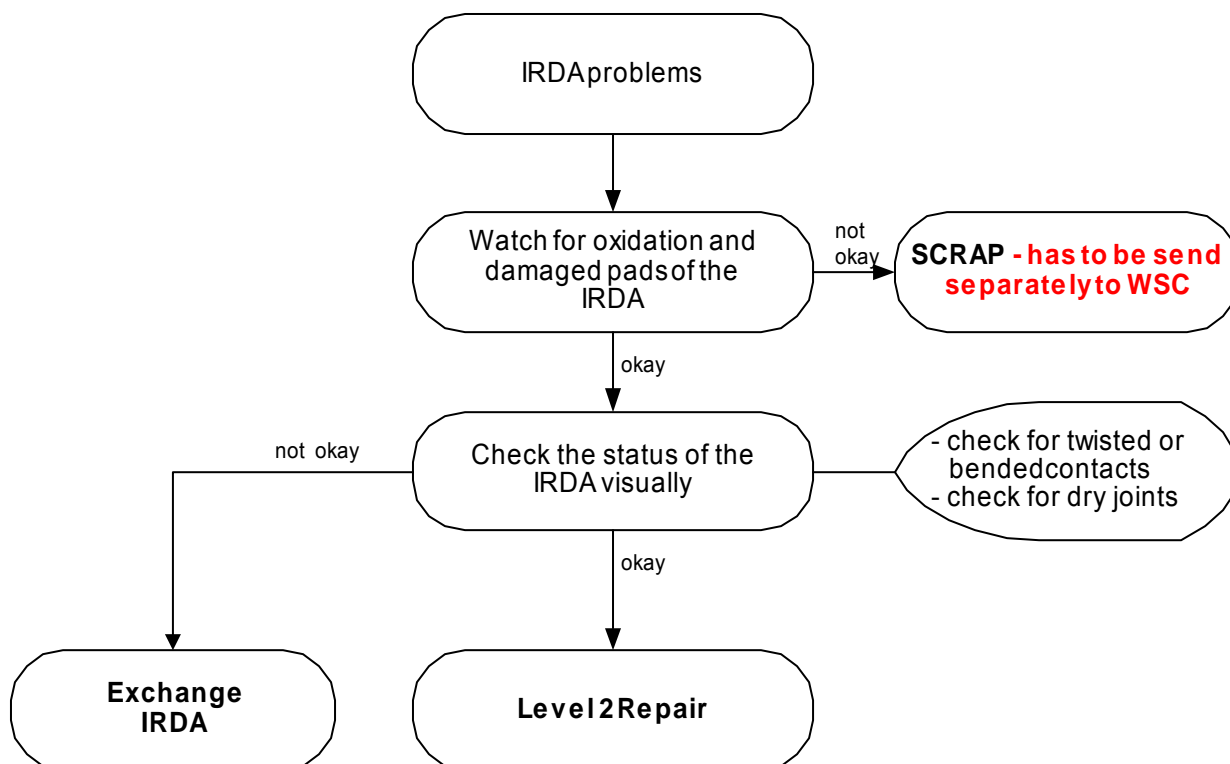
Soldering temperature: 220 - 230°C

IRIS Diagnose Code: 16000 Battery / Backup Battery Performance

14	
Service Repair Documentation Level 2.5 - CFX65	V1.1

9. IRDA (U103)

Fault Symptoms	
Customer	GRT
No infrared connection possible	No GRT support



IRDA

Use hot air blower to remove defective component. Avoid excessive heat! Watch surrounding components! Resolder new component afterwards.

E-commerce order number: L50610-U6153-D670

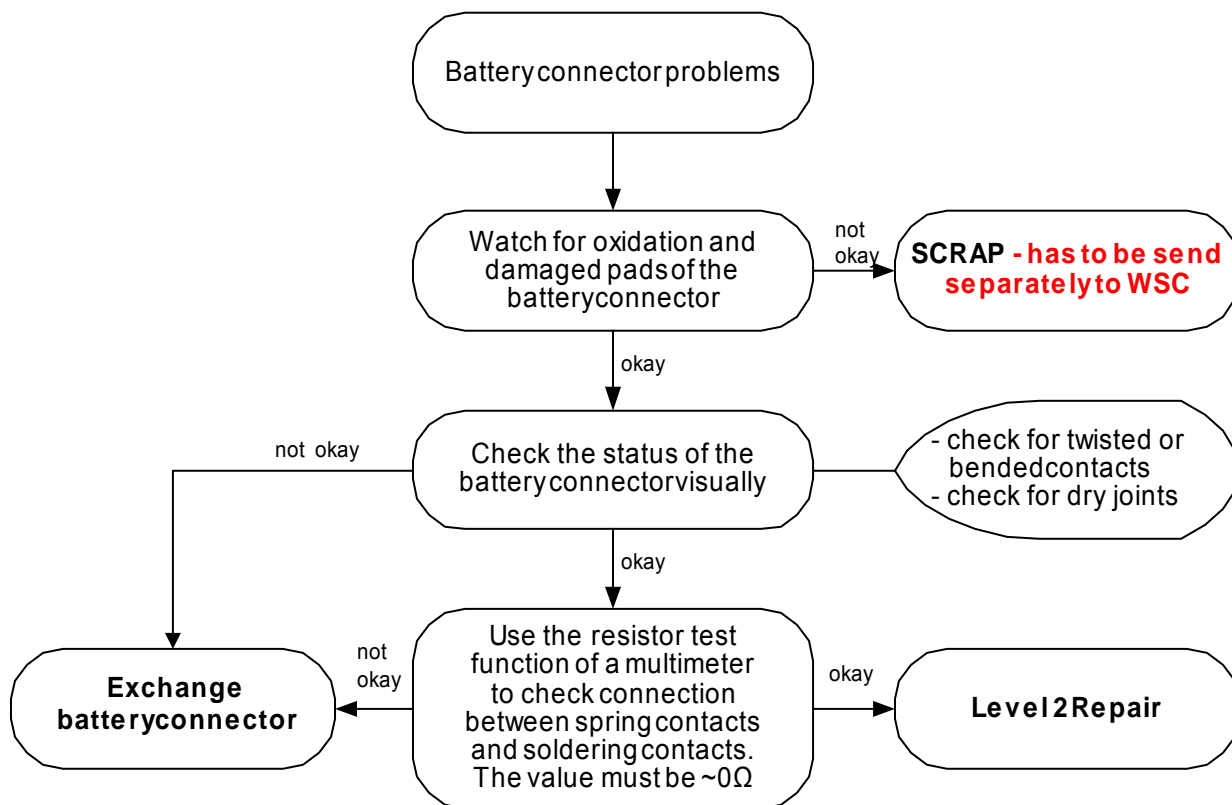
Soldering temperature: 240 - 255°C

IRIS Diagnose Code: 41000 Interfaces / IRDA / No function

41300 Interfaces / IRDA / Mechanical damage

10. Battery connector (J300)

Fault Symptoms	
Customer	GRT
Mobile does not switch on	No GRT support



Battery connector

Use hot air blower to remove defective component. Avoid excessive heat! Watch surrounding components! Resolder new component afterwards.

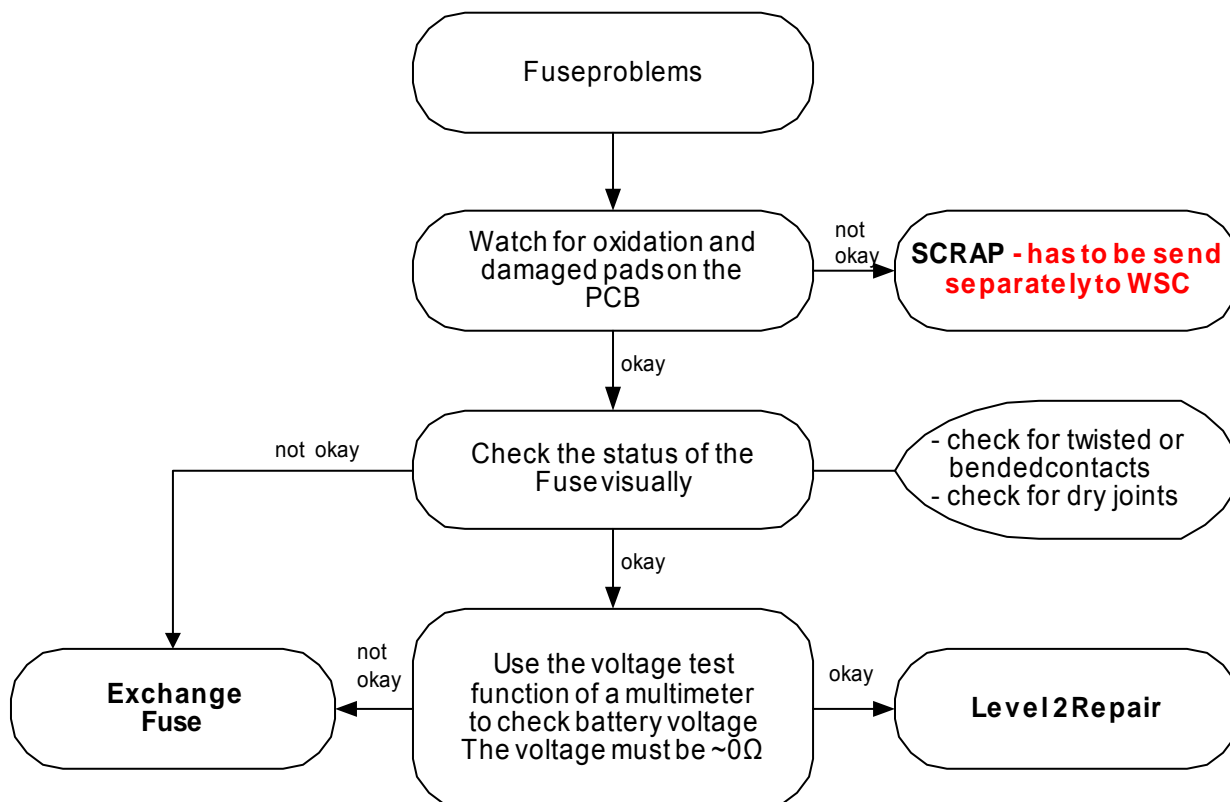
E-commerce order number: L50634-Z97-C376

Soldering temperature: 240 - 255°C

IRIS Diagnose Code: 13000 Battery / Mechanical damage

11. Fuse (F300)

Fault Symptoms	
Customer	GRT
Battery charging does not work	No GRT support



Fuse

Use soldering iron to remove defective component. Avoid excessive heat! Watch surrounding components! Resolder new component afterwards.

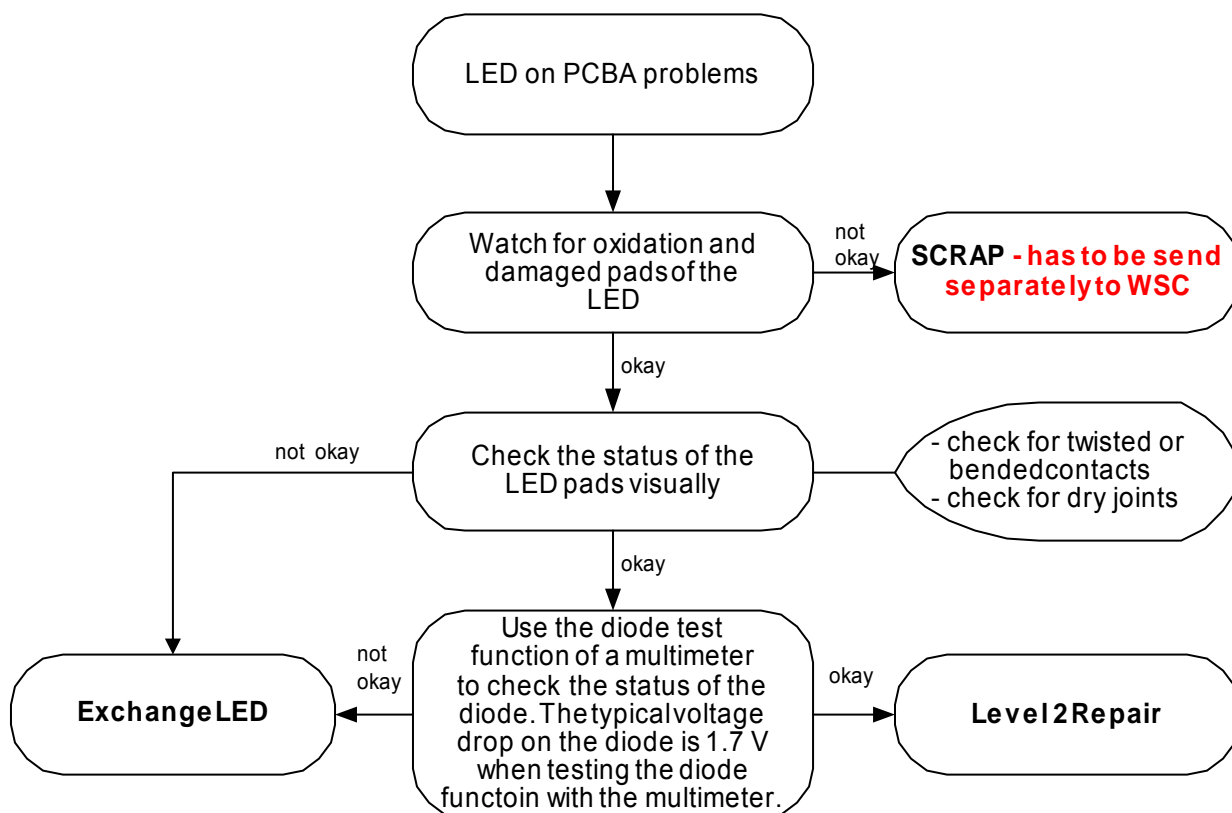
E-commerce order number: L50645-A820-Y20

Soldering temperature: 240 - 255°C

IRIS Diagnose Code: 11000 Battery / No charging / Deep discharge

12. LED on PCBA

Fault Symptoms	
Customer	GRT
LED does not work or not bright	No GRT support



LED

Use soldering iron to remove defective component. Avoid excessive heat! Watch surrounding components! Resolder new component afterwards.

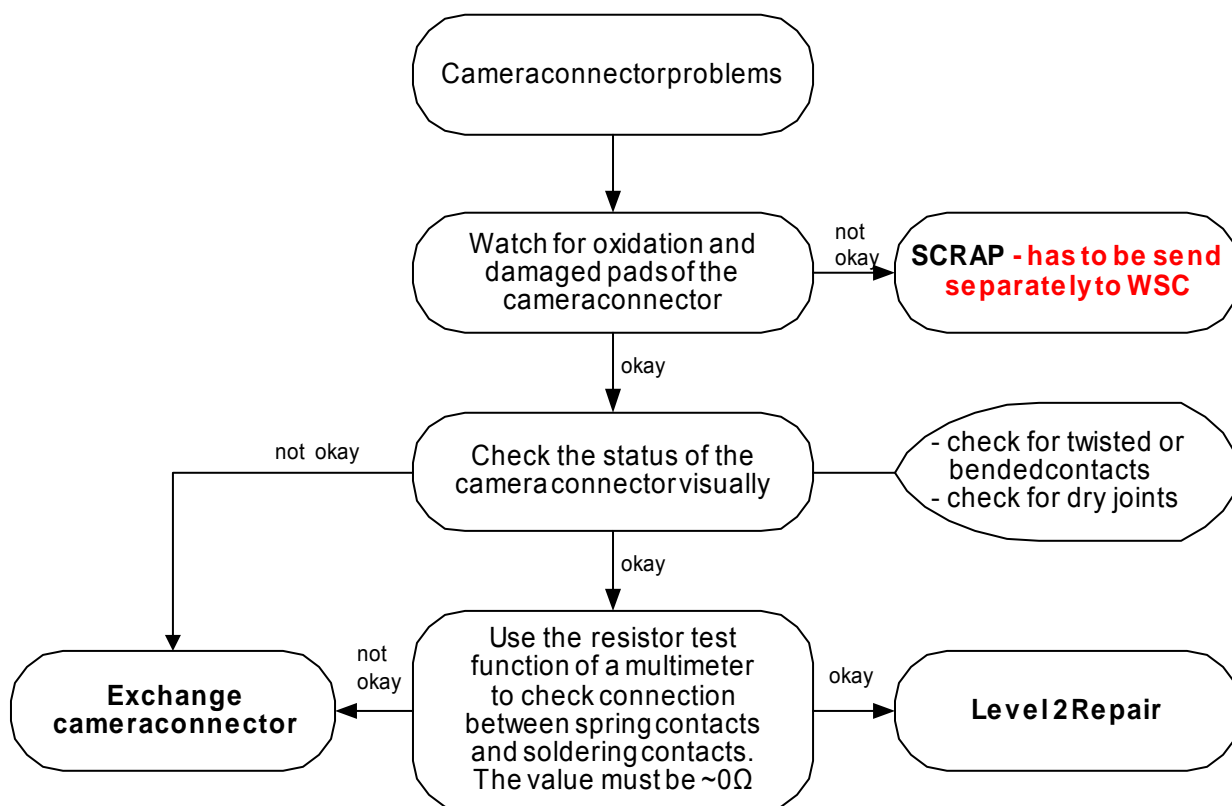
E-commerce order number: L50640-L2123-D670

Soldering temperature: 240 - 255°C

IRIS Diagnose Code: 36000 Keys / Illumination

13. Camera connector

Fault Symptoms	
Customer	GRT
Camera malfunction	No GRT support



Camera connector

Use hot air blower to remove defective component. Avoid excessive heat! Watch surrounding components! Resolder new component afterwards.

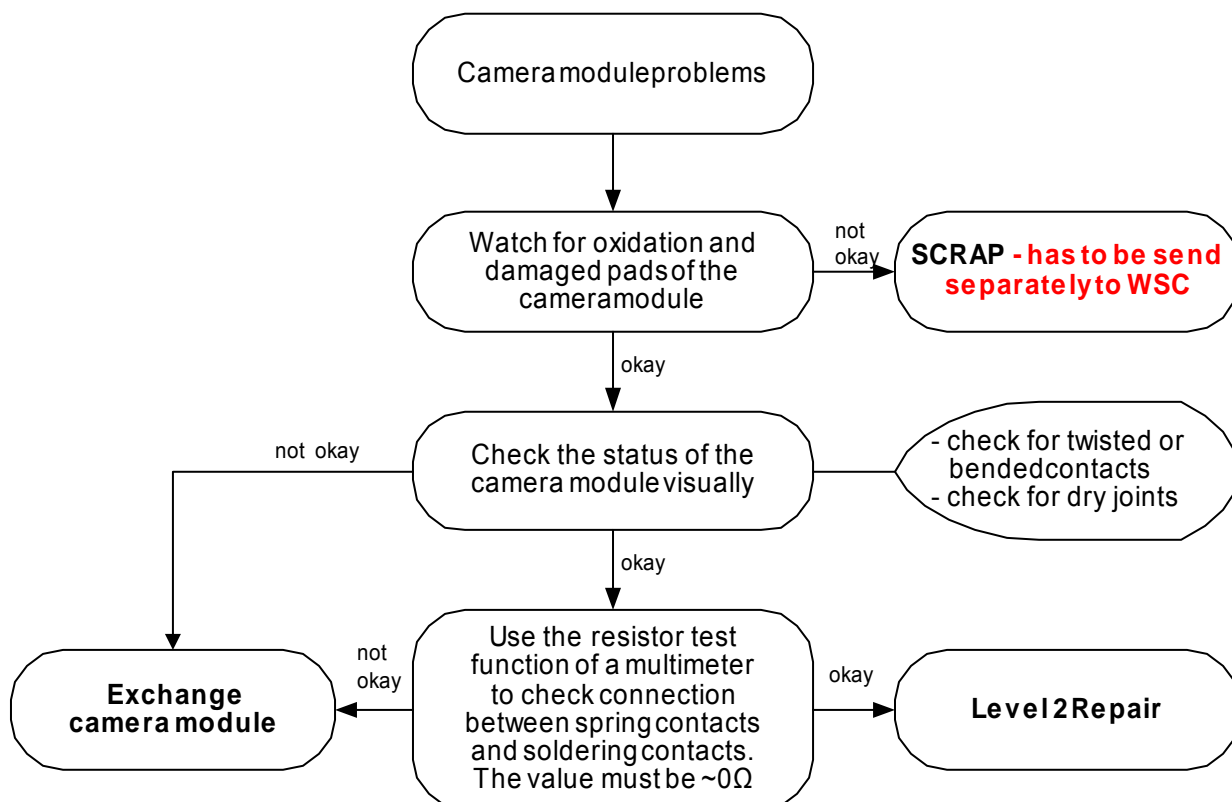
E-commerce order number: L50634-Z97-C378

Soldering temperature: 240 - 255°C

IRIS Diagnose Code: BA000 Accessories / Camera

14. Camera module

Fault Symptoms	
Customer	GRT
Camera malfunction	No GRT support



Camera module

Use hot air blower to remove defective component. Avoid excessive heat! Watch surrounding components! Resolder new component afterwards.

E-commerce order number: L50653-Z5-C297

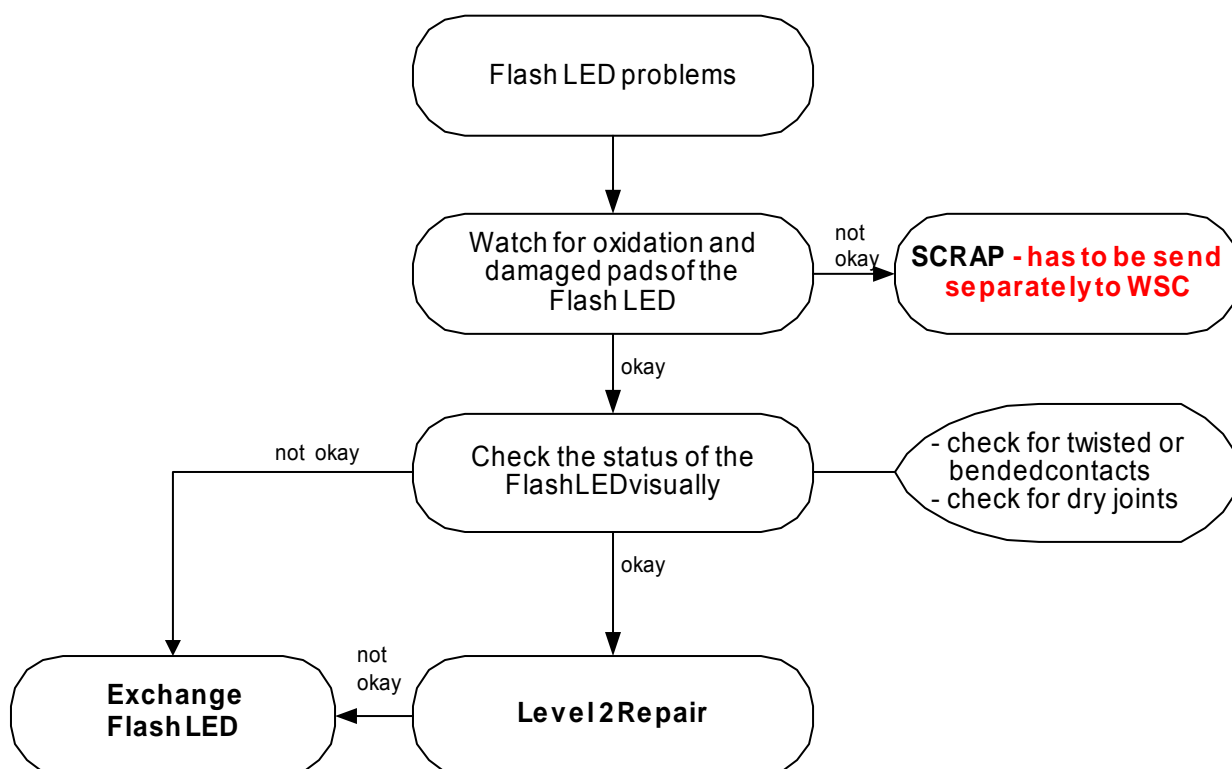
Soldering temperature: 240 - 255°C

IRIS Diagnose Code: BA000 Accessories / Camera

20	
Service Repair Documentation Level 2.5 - CFX65	V1.1

15. Flash LED on the LCM

Fault Symptoms	Solution
Customer	GRT
-Flash LED does not work -Flash LED not bright	No GRT support



Connector Flash LED

Use hot air blower to remove defective component. Avoid excessive heat! Watch surrounding components! Resolder new component afterwards.

E-commerce order number: L50640-L2106-D670

Soldering temperature: 240 - 255°C

IRIS Diagnose Code: 9B300 Functionality / Integrated Camera / Flashlight defective