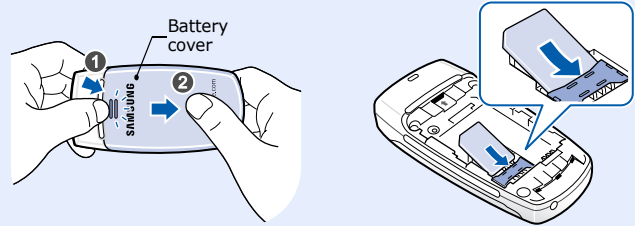


• Depending on the software installed or your service provider or country, some of the descriptions in this guide may not match your phone exactly.
• Depending on your country, your phone and accessories may appear different from the illustrations in this guide.

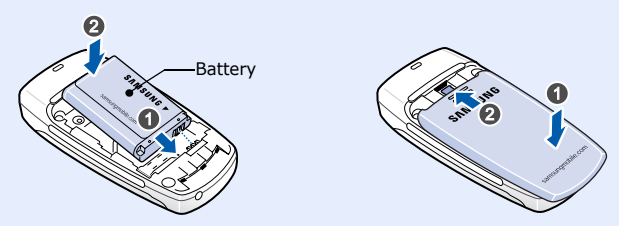
Printed in Korea
Code No.: GH68-13795A
English (LTN). 01/2007.
World Wide Web
http://www.samsungmobile.com

Installing the SIM card and battery

1. Remove the battery cover and insert the SIM card.

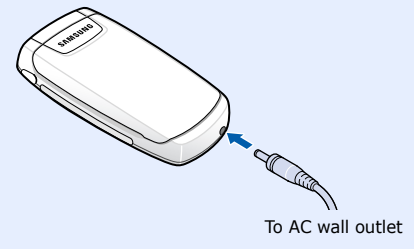


2. Install the battery and reattach the cover.

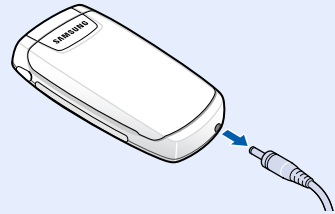


Charging the battery

1. Plug the supplied travel adapter.

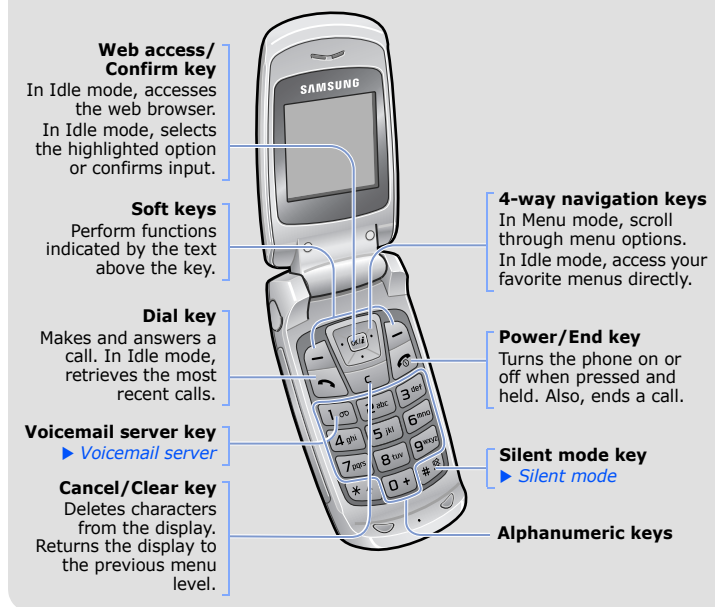


2. When charging is finished, unplug the adapter.



Note: Do not remove the battery from the phone without unplugging the adapter first. Otherwise, the phone may be damaged.

Phone layout and key functions

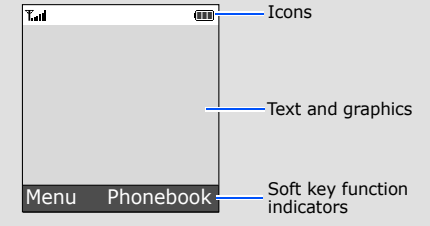


Silent mode Press and hold **#** in Idle mode to disable all sounds on the phone. To exit, press and hold this key again.

Voicemail server Press and hold **1** in Idle mode to access your voicemail server.

Display

Your phone is in Idle mode when you are not on a call or using a menu. You must be in Idle mode to dial a phone number.



Your phone displays the following status indicators on the top of the screen:

Icon	Description
	Received signal strength
	Call in progress
	Out of your service area; you cannot make or receive calls except for emergency calls
	GPRS network
	Roaming network
	Call ringer set to vibrate
	Silent mode
	Call diverting feature active
	New text message
	New voicemail message
	Alarm set
	Battery power level

Switching on or off the phone

- Press and hold for more than one second to switch on the phone.
- Press the **Yes** soft key and set the time and date settings by the following onscreen instructions. See "Changing the time and date."
- To switch off the phone, press and hold for more than two seconds.

Changing the display language

- In Idle mode, press the **Menu** soft key.
- Select **Phone settings** → **Language**.
- Select a language.

Making a call

- In Idle mode, enter an area code and phone number, and press .
- When you want to end the call, press .

Answering a call

- When the phone rings, press the **Accept** soft key or to answer a call. To reject the call, press the **Reject** soft key or .
- When you want to end the call, press .

Adjusting the volume

- In Idle mode, press the **Menu** soft key.

- Select **Sound settings** → **Ring volume**.
- Press **Up** or **Down** to adjust the volume level.
- Press the **OK** soft key.

Changing a ringtone for calls

- In Idle mode, press the **Menu** soft key.
- Select **Sound settings** → **Ring tone**.
- Select a ringtone.

Redialling recent numbers

- In Idle mode, press .
- Press **Up** or **Down** to scroll to the number you want.
- Press to dial the number.

Changing the time and date

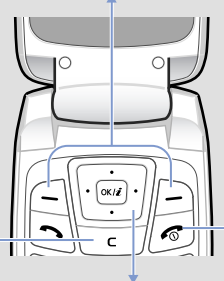
- In Idle mode, press the **Menu** soft key.
- Select **Organiser** → **Time & Date**.
- Select **Set time** and enter the current time. Then press the **OK** soft key.
- Select **Set date** and enter the current date. Then press the **OK** soft key.

Note: Every time you remove the battery or it is fully discharged you must enter time and date again.

Using the menus

In Idle mode, press the **Menu** soft key to enter the main menu.

Labels at the bottom corners of the display show the current soft key functions. Press the left soft key () or right soft key () to perform the function indicated.



To return to the previous menu level, press the soft key or **C**.
To exit the menu without changing the menu settings, press this key.

- Use the 4-way navigation keys () as shortcuts to access your favorite menus.
- In Idle mode, press the **Menu** soft key.
 - Select **Phone settings** → **Short cut**.
 - Select a key.
 - Select a menu to be assigned to the key.

To select or modify a menu or feature:

- In Idle mode, press the **Menu** soft key.
- Press the Navigation keys to reach a desired menu and then press the **Select** soft key or .
- If the menu contains any submenus, locate the one you want by pressing the Navigation keys. Press the **Select** soft key or to enter the submenu. If the selected menu contains additional submenus, repeat this step.
- Press the Navigation keys to find the setting of your choice.
- Press the **Select** soft key or to confirm your chosen setting.

Shortcut numbers

You can quickly access the menu you want by using shortcut numbers. The shortcut number displays in front of the menu name in Menu mode.

Menu map

1. SIM AT*	4. Sound settings	6. Funbox	8. Phonebook
2. Call records	4.1 Ring tone	6.1 WAP browser	8.1 Search
2.1 Missed calls	4.2 Ring volume	6.2 Sounds	8.2 New entry
2.2 Received calls	4.3 Alert type	6.3 Images	8.3 Group search
2.3 Dialed calls	4.4 Keypad tone	6.4 Delete all	8.4 Edit group
2.4 Delete all	4.5 Keypad volume	6.5 Memory status	8.5 Speed dial
2.5 Call time	4.6 Message tone	7. Organiser	8.6 Delete all
2.6 Call cost*	4.7 Alert on call	7.1 Alarm	8.7 Memory status
3. Network services	4.8 Folder tone	7.2 Calendar	8.8 SDN*
3.1 Call diverting	4.9 Extra tones	7.3 Time & Date	9. Phone settings
3.2 Call barring	5. Messages	7.4 Calculator	9.1 Display settings
3.3 Call waiting	5.1 Inbox	7.5 To do list	9.2 Greeting message
3.4 Network selection	5.2 Outbox	7.6 Voice memo	9.3 Own number
3.5 Caller ID	5.3 Write new	7.7 Currency exchange	9.4 Language
3.6 Closed user group	5.4 Templates		9.5 Security
3.7 Band selection	5.5 Settings		9.6 Extra settings
	5.6 Delete all		9.7 Short cut
	5.7 Memory status		9.8 Reset settings
	5.8 Voice mail		
	5.9 Broadcast		

* Shows only if supported by your SIM card.

Entering text

Changing the text input mode

In a text input field, press the right soft key until the input mode indicator you want appears:

- T9**: T9 mode
- A**: ABC mode
- 1**: Number mode
- None: Symbol mode

T9 mode

- Press **2** to **9** to start entering a word. Press each key once for one letter.
Example: To enter "Hello" in T9 mode, press **4**, **3**, **5**, **5**, and **6**.
T9 predicts the word that you are typing, and it may change with each key that you press.
- Enter the whole word before editing or deleting characters.
- When the word displays correctly, go to step 4. Otherwise, press **0** to display alternative word choices for the keys that you have pressed.
For example, *Of* and *Me* use **6** and **3**.

Feature	Description	Select
Alert type	Select an alert type for the call ringer.	Menu > Sound settings > Alert type
Select key tone	Select a tone which the phone sounds when you press a key.	Menu > Sound settings > Keypad tone
Select key volume	Adjust the key volume.	Menu > Sound settings > Keypad volume
Select message tone	Select the alert ringtone for incoming SMS and broadcast messages.	Menu > Sound settings > Message tone
Alert on call	Set the phone to alert you when you receive a new message or when the time for an alarm comes during a call.	Menu > Sound settings > Alert on call
Folder tone	Select the tone that the phone sounds when you open or close the phone.	Menu > Sound settings > Folder tone
Extra tones	Set additional tones for the phone.	Menu > Sound settings > Extra tones
Read SMS messages	Read received or sent messages.	Menu > Messages > Inbox or Outbox
Send SMS messages	Create and send messages to other mobile phones.	Menu > Messages > Write new

Feature	Description	Select
Greeting message	Enter the greeting message to be displayed when the phone is switched on.	Menu > Phone settings > Greeting message
Check your own phone numbers	Check your phone numbers or assign a name to them.	Menu > Phone settings > Own number
Display language	Select a language to be used for the display text.	Menu > Phone settings > Language
Security	Protect the phone against unauthorised use.	Menu > Phone settings > Security
Extra settings	Set the automatic redialling feature or the answering method.	Menu > Phone settings > Extra settings
Menu shortcuts	Set the Navigation keys as shortcuts to access your favorite menus directly.	Menu > Phone settings > Short cut
Reset the phone	Reset the phone to the factory default settings.	Menu > Phone settings > Reset settings

- Press **#** to insert a space and enter the next word.

ABC mode

Press the keys labelled with the character you want:

- once for the first character
- twice for the second character
- and so on.

For example, press **2** three times to enter "C" and **5** two times to enter "K."

Number mode

Press the keys corresponding to the digits you want.

Symbol mode

Press the number keys corresponding to the symbol you want and press the **OK** soft key. You can press **Up** or **Down** to display more symbols.

Tips for entering text

- To move the cursor, press the Navigation keys.
- To delete characters one by one, press **C**. To clear the display, press and hold **C**.

Feature	Description	Select
Message templates	Preset templates of frequently used messages.	Menu > Messages > Templates
Messaging options	Set options for using messaging services.	Menu > Messages > Settings
Delete messages	Delete messages in each message box, or all messages at once.	Menu > Messages > Delete all
Message memory status	Check memory information for messages.	Menu > Messages > Memory status
Voicemail	Access your voicemail server and listen to messages on the network.	Menu > Messages > Voice mail
Broadcast message	Change settings for the service and access broadcast messages.	Menu > Messages > Broadcast
Web browser	Launch and configure the web browser.	Menu > Funbox > WAP browser
Access media files	Access sounds or images in your phone's memory.	Menu > Funbox > Sounds or Images
Delete all media files	Delete sounds or images in each media box, or all media files at once.	Menu > Funbox > Delete all

Important safety precautions

Read these guidelines before using your wireless phone. Failure to comply with them may be dangerous or illegal.

Drive safely at all times

Do not use a hand-held phone while driving; park the vehicle first.

Switching off when refuelling

Do not use the phone at a refuelling point (service station) or near fuels or chemicals.

Switching off in an aircraft

Wireless phones can cause interference. Using them in an aircraft is both illegal and dangerous.

Switching off near all medical equipment

Hospitals and health care facilities may be using equipment that could be sensitive to external RF energy. Follow any regulations or rules in force.

Interference

All wireless phones may be subject to interference, which could affect their performance.

Special regulations

Follow any special regulations in force in any area and always switch off your phone whenever it is forbidden to use it.

Water resistance

Your phone is not water-resistant. Keep it dry.

- To insert a space between characters, press **#**.
- To change case in T9 mode or ABC mode, press *****.
- To enter punctuation marks in T9 mode or ABC mode, press **1**.

Sending an SMS message


- In Idle mode, press the **Menu** soft key.
- Select **Messages** → **Write new**.
- Enter the message text.
- Press the **Options** soft key and add items using the following options:
 - Add objects**: add sounds, images, or animated images.
 - Add templates**: add text templates.
 - Add phonebook**: add Phonebook contacts.
 - Add bookmark**: add bookmark items.
- Press the **Options** soft key and select **Send only**, **Save and send**, or **Save only**.
- If you select **Save and send** or **Save only**, select a memory location.
- Enter a destination number and press the **OK** soft key.

Feature	Description	Select
Funbox memory status	Check the amount of memory in use for sounds and images.	Menu > Funbox > Memory status
Alarm	Set an alarm to sound at a specific time.	Menu > Organiser > Alarm
Calendar	Keep track of daily or monthly schedules.	Menu > Organiser > Calendar
Time and date	Set the current time and date manually or set your local time zone.	Menu > Organiser > Time & Date
Calculator	Perform basic arithmetic functions.	Menu > Organiser > Calculator
Task list	Create a list of tasks and assign a deadline to each task.	Menu > Organiser > To do list
Voice memo	Record voice memos and listen to them.	Menu > Organiser > Voice memo
Currency convertor	Do currency conversions.	Menu > Organiser > Currency exchange
Find a contact	Search for contacts in Phonebook.	Phonebook > Search
Add a new contact	Add a new contact to Phonebook.	Phonebook > New entry

Sensible use

Use only in the normal position (held to the ear). Avoid unnecessary contact with the antenna when the phone is switched on.

Emergency calls

Key in the emergency number for your present location, then press . Do not end the call until given permission to do so.


Small children and your phone

Keep the phone and all its parts including accessories out of reach of small children.

Accessories and batteries

Use only Samsung-approved batteries and accessories, such as headsets and PC data cables. Use of any unauthorised accessories could damage your phone and may be dangerous.

CAUTION Risk of explosion if a battery is replaced by an incorrect type. Dispose used batteries according to the instructions.

 At very high volume, prolonged listening to a headset can damage your hearing.

Qualified service

Only qualified service personnel may repair your phone.

Quick feature reference

This section provides brief explanations of features on your phone.

Feature	Description	Select
Use the SIM service	Use a variety of additional services offered by your service provider.	Menu > SIM AT
View recent calls	View the most recent calls you have dialled, received, or missed.	Menu > Call records > Missed calls, Received calls, Dialled calls
Delete recent calls	Delete the call logs in each call type, or all logs at once.	Menu > Call records > Delete all
Call time display	View the duration of recent calls you have dialled and received. Also reset the time counter.	Menu > Call records > Call time
Call cost display	View the cost of your calls.	Menu > Call records > Call cost
Network services	Access network services offered by your service provider.	Menu > Network services
Select a ringtone	Select a ringtone for incoming calls.	Menu > Sound settings > Ring tone
Select a volume	Adjust a volume level.	Menu > Sound settings > Ring volume

Feature	Description	Select
Search group	Search for Phonebook contacts in caller groups.	Phonebook > Group search
Change properties of a caller group	Select a ringtone and image for incoming calls and messages from members of a group. Also change the group name.	Phonebook > Edit group
Speed dial	Assign speed dial numbers for your most frequently dialled numbers.	Phonebook > Speed dial
Delete Phonebook contacts	Delete all Phonebook contacts stored in the phone's memory, on the SIM card, or both.	Phonebook > Delete all
Phonebook memory status	View the total number of Phonebook contacts in the phone's memory or on the SIM card.	Phonebook > Memory status
SDN (Service Dialing Numbers)	Access the list of service numbers assigned by your service provider.	Phonebook > SDN
Display settings	Change settings for the display and backlight.	Menu > Phone settings > Display settings

SAR information

Your wireless phone is a radio transmitter and receiver. It is designed and manufactured not to exceed the emission limits for exposure to radio frequency (RF) energy set by the Federal Communications Commission (FCC) of the U.S. Government. These limits are part of comprehensive guidelines and establish permitted levels of RF energy for the general population. The guidelines are based on the safety standards that were developed by independent scientific organizations through periodic and thorough evaluation of scientific studies.

The standards include a substantial safety margin designed to assure the safety of all persons, regardless of age and health.

The exposure standard for wireless phones employs a unit of measurement known as Specific Absorption Rate (SAR). The SAR limit set by the FCC is 1.6 W/kg*. The highest SAR values for this model phone as reported to the FCC are GSM 850 Head: 1.09 W/kg, Body-worn: 0.633 W/kg and GSM 1900 Head: 0.978 W/kg, Body-worn: 0.386 W/kg.

* In the U.S. and Canada, the SAR limit for mobile phones used by the public is 1.6 watts/kg (W/kg) averaged over one gram of tissue. The standard incorporates a substantial margin of safety to give additional protection for the public and to account for any variations in measurements.