

- * Depending on the software installed or your service provider or country, some of the descriptions in this guide may not match your phone exactly.
- * Depending on your country, your phone and accessories may appear different from the illustrations in this guide.

SAMSUNG ELECTRONICS



World Wide Web
<http://www.samsungmobile.com>

Printed in Korea
Code No.:GH68-07960A
English. 10/2005. Rev. 1.0



SGH-E758
User's Guide





Important safety precautions



Failure to comply with the following precautions may be dangerous or illegal.

Drive safely at all times

Do not use a hand-held phone while driving. Park the vehicle first.

Switch off the phone when refuelling

Do not use the phone at a refuelling point (service station) or near fuels or chemicals.

Switch off in an aircraft

Wireless phones can cause interference. Using them in an aircraft is both illegal and dangerous.

Switch off the phone near all medical equipment

Hospitals or health care facilities may be using equipment that could be sensitive to external radio frequency energy. Follow any regulations or rules in force.

Interference

All wireless phones may be subject to interference, which could affect their performance.

Be aware of special regulations

Meet any special regulations in force in any area and always switch off your phone whenever it is forbidden to use it, or when it may cause interference or danger.


Water resistance

Your phone is not water-resistant. Keep it dry.

Sensible use

Use only in the normal position (held to the ear). Avoid unnecessary contact with the antenna when the phone is switched on.

Emergency calls

Key in the emergency number for your present location, then press .

Keep your phone away from small children

Keep the phone and all its parts, including accessories, out of the reach of small children.

Accessories and batteries

Use only Samsung-approved accessories and batteries. Use of any unauthorised accessories could damage your phone and may be dangerous.



- The phone could explode if the battery is replaced with an incorrect type.
- Dispose of used batteries according to the manufacturer's instructions.

Qualified service

Only qualified service personnel may repair your phone.






For more detailed safety information, see "Health and safety information" on page 96.



About this Guide

This User's Guide provides you with condensed information about how to use your phone. To quickly learn the basics for your phone, please refer to "Get started" and "Step outside the phoneMotion."

In this guide, the following instruction icons appear:

-  Indicates that you need to pay careful attention to the subsequent information regarding safety or phone features.
-  Indicates that you can get more information on the referenced page.
-  Indicates that you need to press the Navigation keys to scroll to the specified option and then select it.
-  Indicates a key on the phone. For example, [OK/⌂]
-  Indicates a soft key, whose function is displayed on the phone screen. For example, <Menu>

- **Motion recognition**

Your phone detects movement. It can carry out certain commands based on how you move the phone.

Special features of your phone



- **Camera and camcorder**

Use the camera module on your phone to take a photo or record a video.



- **MP3 player**

Play MP3 music files using your phone as a MP3 player.



- **Bluetooth**
Transfer media files and personal data and connect to other devices using free, wireless Bluetooth technology.

- **Voice clarity**
Use the voice clarity feature to increase the volume and clarity of an incoming call, even in the midst of a crowd.



- **Get personal with photo caller ID**
See who's calling you when their very own photo displays.



- **Name card**
Create name cards with your number and profile. Whenever introducing yourself to others, use this convenient electronic name card.

- **Multimedia Message Service (MMS)**
Send and receive MMS messages with a combination of text, images, video, and audio.

- **E-mail**
Send and receive e-mails with images, video, and audio attachments.



- **Java**
Enjoy Java™-based embedded games and download new games.



- **Calendar**
Keep track of your daily, weekly, and monthly schedule.



- **Voice recorder**
Record memos or sounds.

Contents

Unpack **6**

Make sure you have each item

Your phone **6**

Buttons, features, and locations

Get started **7**

First steps to operating your phone

Install and charge the phone 7

Power on or off 9

Keys and display 9

Access menu functions 12

Customise your phone 13

Make/Answer calls 15

Step outside the phoneMotion **22**

Begin with your camera, music, and other special features

Play MP3s 23

Browse the web 24

Use Phonebook 25

Send messages 26

View messages 27

Use Bluetooth 28

Enter text **30**

Call functions **34**

Advanced calling features

Menu functions **38**

All menu options listed

Solve problems **94**

Help and personal needs

Health and safety information **96**

Overview of menu functions

To access Menu mode, press <Menu> in Idle mode.

1 Call records	▶ p.38	3 Applications	▶ p.45	5 Messages	▶ p.57	8 Camera	▶ p.77
1 Recent contacts	▶ p.38	1 MP3 Player	▶ p.45	1 Create new message	▶ p.57		
2 Missed calls	▶ p.39	2 Voice recorder	▶ p.47	2 My messages	▶ p.60		
3 Dialed calls	▶ p.39	3 Java world	▶ p.48	3 Templates	▶ p.64	9 Settings	▶ p.83
4 Received calls	▶ p.39	4 Shake and play	▶ p.50	4 Delete all	▶ p.65	1 Time & Date	▶ p.84
5 Delete all	▶ p.39	5 World time	▶ p.51	5 Settings	▶ p.65	2 Phone settings	▶ p.84
6 Area code	▶ p.39	6 Alarm	▶ p.51	6 Broadcast messages	▶ p.70	3 Display settings	▶ p.85
7 Call time	▶ p.39	7 Calculator	▶ p.52	7 Memory status	▶ p.70	4 Sound settings	▶ p.86
8 Call costs*	▶ p.40	8 Convertor	▶ p.52			5 Network services	▶ p.87
2 Phonebook	▶ p.40	9 Timer	▶ p.53	6 File manager	▶ p.70	6 Bluetooth	▶ p.90
1 Contact list	▶ p.41	10 Stopwatch	▶ p.53	1 Images	▶ p.71	7 Security	▶ p.92
2 FDN list*	▶ p.41	11 SIM-AT*	▶ p.53	2 Videos	▶ p.71	8 Memory status	▶ p.93
3 Add new contact	▶ p.42	4 Browser	▶ p.54	3 Music	▶ p.72	9 Reset settings	▶ p.93
4 Group	▶ p.42	1 Home	▶ p.54	4 Sounds	▶ p.72		
5 Speed dial	▶ p.43	2 Fun club	▶ p.55	5 Other files	▶ p.73		
6 My name card	▶ p.43	3 Bookmarks	▶ p.55	6 Memory status	▶ p.73		
7 Own number	▶ p.44	4 Go to URL	▶ p.56				
8 Management	▶ p.44	5 Clear cache	▶ p.56	7 Calendar	▶ p.73		
9 Service number*	▶ p.44	6 Profile settings	▶ p.56				
		7 Current profile	▶ p.57				

* Shows only if supported by your SIM card.

Unpack

Make sure you have each item



Phone



Travel Adapter



Battery



User's Guide

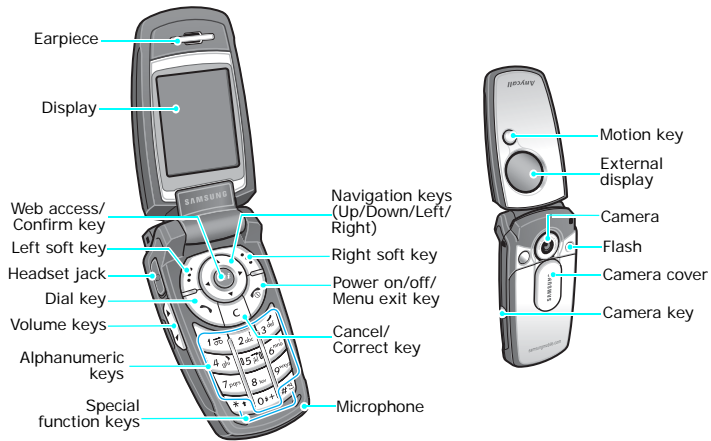
You can obtain various accessories from your local Samsung dealer.



The items supplied with your phone and the accessories at your Samsung dealer may vary, depending on your country or service provider.

Your phone

Buttons, features, and locations



Get started

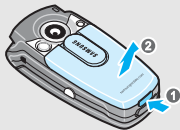
First steps to operating your phone

SIM card information

When you subscribe to a cellular network, you receive a plug-in SIM (Subscriber Identity Module) card loaded with your subscription details, such as your PIN, and available optional services.

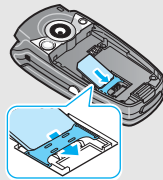
Install and charge the phone

- 1 If necessary, slide down the camera cover and remove the battery.



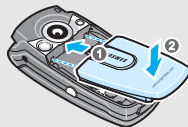
- If the phone is already on, first turn it off by holding [Power].

- 2 Insert the SIM card.

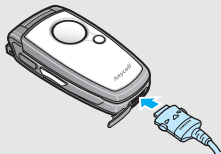


- Make sure that the gold-coloured contacts on the card face down into the phone.

- 3 Install the battery.



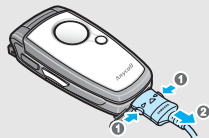
4 Plug the travel adapter into the phone.



5 Plug the adapter into a standard AC wall outlet.


6 When the phone is completely charged (the battery icon becomes still), unplug the adapter from the power outlet.

7 Remove the adapter from the phone.



Low battery indicator


When the battery is low:

- a warning tone sounds,
- the battery low message displays, and
- the empty battery icon  blinks.

If the battery level becomes too low, the phone automatically turns off. Recharge your battery. In this case, you may not be able to use some features.


Power on or off

Switch on

1. Open the phone.
2. Press and hold [] to turn on the phone.
3. If necessary, enter the PIN and press <OK>.

Do not turn on the phone when mobile phone use is prohibited.

Switch off

1. Open the phone.
2. Press and hold [].

Keys and display

Keys



Perform the function indicated on the bottom line of the display.



In Idle mode, access your favourite menus, directly. ► p. 84
In Menu mode, scroll through the menu options.



In Idle mode, launch the web browser.
In Menu mode, select the highlighted menu option.



Delete characters from the display.
In Menu mode, return to the previous menu level.



Send or answer a call.
In Idle mode, retrieve the recent numbers dialled, missed, or received.



End a call.

Press and hold to switch the phone on and off.

In Menu mode, cancel input and return the phone to Idle mode.



Enter numbers, letters, and some special characters.



In Idle mode, press and hold [1] to access your voicemail server. Press and hold [0] to enter the international call prefix.



Enter special characters.



In Idle mode, press and hold [*] to enter a pause between numbers. Press and hold [#] to activate or deactivate Quiet mode.



Adjust the phone volume.

In Idle mode, with the phone open, adjust the keypad tone volume. With the phone closed, press and hold to activate the external display.



In Idle mode, press and hold to turn on the camera.

In Camera mode, take a photo or record a video.

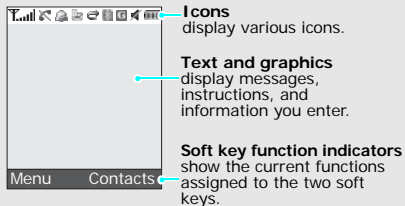


Move the phone to the right and back to the left while holding this button to launch the MP3 player.

Move the phone to the left and back to the right naturally while holding this button to launch the beatbox.

Display

Layout



Icons*

	Received signal strength
	Call in progress
	Out of your service area; you cannot send or receive calls
	Alarm set
	New text message
	New multimedia message
	New voicemail

Icons

(continued)

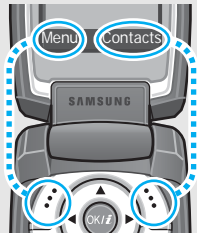
	New e-mail
	One of the message Inboxes is full
	Call diverting feature is active ▶ p. 88
	Bluetooth feature is active ▶ p. 90
	Connected to hands-free car kit or headset
	Synchronised with PC
	GPRS network
	Home Zone, if you have registered for the appropriate service
	Office Zone, if you have registered for the appropriate service
	Call ringer set to vibrate ▶ p. 86
	Quiet mode is active ▶ p. 87
	Battery power level

* The icons shown on the display may vary, depending on your country or service provider.

Access menu functions

Use the soft keys

The roles of the soft keys vary depending on the function you are using. The bottom line of the display indicates their current role.



Press the left soft key to access Menu mode.

Press the right soft key to access **Contact list**.

Select an option

1. Press the appropriate soft key.
2. Press the Navigation keys to move to the next or previous option.
3. Press **<Select>**, **<OK>**, or **[OK/i]** to confirm the function displayed or option highlighted.
4. To exit, choose either of the following methods.
 - Press **<Back>** or **[C]** to move up one level.
 - Press **[⌂]** to return to Idle mode.

Use shortcuts

Press the number key corresponding to the option you want.

Customise your phone

Display language

1. In Idle mode, press <Menu> and select **Settings** → **Phone settings** → **Language** → **Display**.
2. Select a language.

Call ringer melody

1. In Idle mode, press <Menu> and select **Settings** → **Sound settings** → **Incoming call** → **Ring tone**.
2. Select a ringtone category.
3. Select a ringtone.
4. Press <Save>.

Idle mode wallpaper

You can set your wallpaper for the main display.

1. In Idle mode, press <Menu> and select **Settings** → **Display settings** → **Wallpaper** → **Main display**.
2. Select an image category.
3. Select an image.

Menu mode skin colour

You can change the colour for the display components, such as title bars and highlight bars.

1. In Idle mode, press <Menu> and select **Settings** → **Display settings** → **Skin**.
2. Select a colour pattern.

Menu shortcuts

You can use the Navigation keys as shortcut keys to access specific menus directly from Idle mode.

1. In Idle mode, press <Menu> and select **Settings** → **Phone settings** → **Short cut**.
2. Select a key.
3. Select a menu to be assigned to the key.

Quiet mode

You can switch to Quiet mode to avoid disturbing other people.

Press and hold [#] in Idle mode.



Phone lock

You can protect the phone against unauthorised use with a phone password. The phone will require the password on power-up.



1. In Idle mode, press <Menu> and select **Settings** → **Security** → **Change password**.
2. Enter the default password, **00000000**, and press <OK>.
3. Enter a new 4- to 8-digit password and press <OK>.
4. Enter the new password again and press <OK>.
5. Select **Phone lock**.
6. Select **Enable**.
7. Enter the password and press <OK>.

Make/Answer calls

Make a call

1. In Idle mode, enter an area code and phone number.
2. Press [].
3. To end the call, press [].

Answer a call

1. When the phone is ringing, press [].
2. To end the call, press [].

Adjust the volume during a call

Press [].

Use the Motion Recognition feature

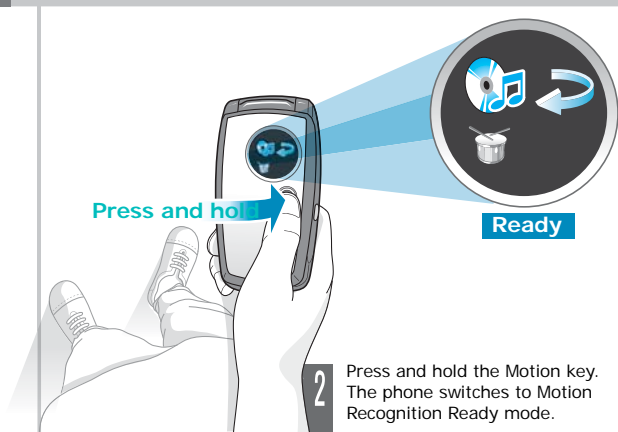
You can launch some applications by just moving the phone. With a built-in sensor detecting the phone's movement and acceleration, your phone can execute certain commands based on how you move the phone.



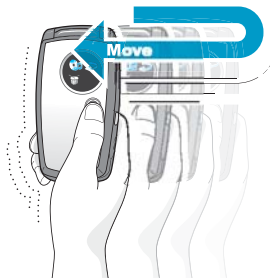
1 Hold your phone as level as possible.


MP3

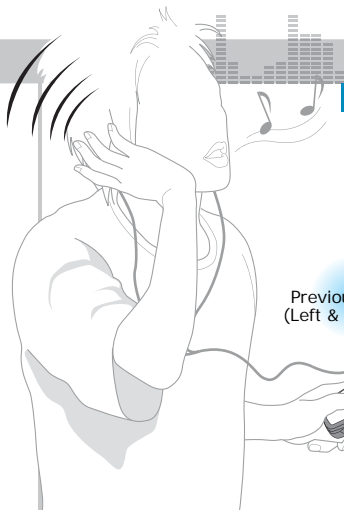
First, create a list. ▶ p. 23



2 Press and hold the Motion key. The phone switches to Motion Recognition Ready mode.

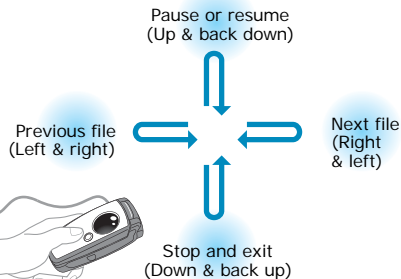


- 3** Make the phone  (Right & left) while holding the key. When the MP3 player starts, release the key.



During playback

(While holding the Motion key)



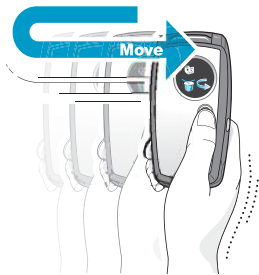
- Move the phone naturally within a small area and complete the motion in a short time, **1** or **2** seconds.


Beatbox

- 1 Hold your phone as level as possible.
- 2 Press and hold the Motion key. The phone switches to Motion Recognition Ready mode.




Press and hold





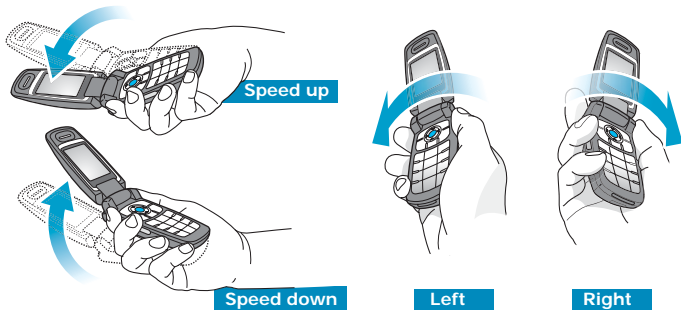
- 3 Make the phone  (Left & right) while holding the key. When the beatbox starts, release the key.



- 4 Shake your phone to hear the rythm.
- 5 To exit, open the phone and press the  key, or press and hold the [Camera] key.

Motion game To play Screamer


1. In Idle mode, press the **Menu** soft key and select **Applications** → **Java world** → **Downloads** → **Screamer**.
2. Press any key, except the  and  keys, to launch the game.
3. Select **NEW GAME** → a game mode.
4. Press the **OK/⤵** key.
If you selected Training mode skip to step 9.
5. Enter a character name and press the **OK/⤵** key.
6. Set height, weight, and nation for the character and press the **OK/⤵** key.
7. Set length, width, and weight for a luge and press the **OK/⤵** key.
8. Press the **OK/⤵** key twice.

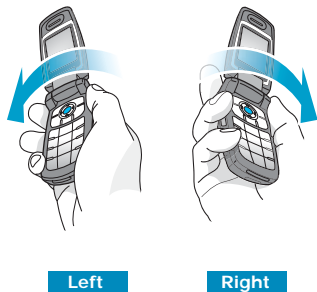
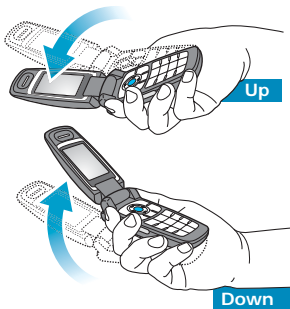


9. Tilt the phone up to make the character move forward. Tilt the phone up or down to adjust speed of the luge, or to the left or right to change the direction of the luge.

Changing your position during a game may cause an error. If you move, press the **Restart** soft key.

To play Pharaoh's Treasure

1. In Idle mode, press the **Menu** soft key and select **Applications** → **Java world** → **Downloads** → **Pharaoh's Treasure**.
2. Press any key, except the  key, to launch the game.
3. Select **Start** → **New Game**.
4. Press the **OK/i** key.



5. Tilt the phone to the right to make the character move forward.
Tilt the phone to the left, right, up, or down to move the character.

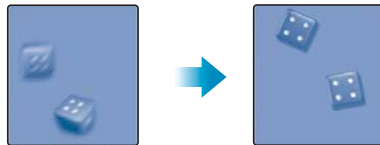
Changing your position during a game may cause an error.
If you move, press the **MENU** soft key and select **Resume**.

To roll the dice or choose random numbers

1. In Idle mode, press the **Menu** soft key and select **Applications** → **Shake and play** → a game.
2. After accessing a game, shake the phone.



3. When you stop, the results will display.



Step outside the phoneMotion

Begin with your camera, music, and other special features

Use camera

Take a photo

1. Open the phone.
2. Remove the camera cover.
3. In Idle mode, press and hold [Camera] to turn on the camera.
4. Aim the lens at the subject and adjust the image.
5. Press [OK/⏏] to take a photo. The photo is saved automatically.
6. Press [OK/⏏] to take another photo.

View a photo

1. In Idle mode, <Menu> and select **File manager** → **Images** → **Photos**.
2. Select the photo you want.

Record a video

1. In Idle mode, press and hold [Camera] to turn on the camera.
2. Press [1] to switch to Record mode.
3. Press [OK/⏏] to start recording.
4. Press [OK/⏏] to stop recording. The video is saved automatically.
5. Press the right soft key to return to Record mode.

Play a video

1. In Idle mode, <Menu> and select **File manager** → **Videos** → **Videos**.
2. Select the video clip you want.

Play MP3s

Copy MP3 files to the phone

Use these methods:

- Download from the wireless web ▶ p. 54
- Download from a computer using Samsung PC Studio ▶ Samsung PC Studio User's Guide
- Receive via Bluetooth ▶ p. 92

Create a play list

1. In Idle mode, press <Menu> and select **Applications** → **MP3 Player**.
2. Press <Options> and select **Add to list** → **Add all** or **Add a file**.
3. For **Add a file**, press [OK/↵] to check the files you want and press <Add>.
4. Press <Back> to return to the MP3 player screen.

Play MP3 file

1. From the MP3 player screen, press [OK/⏏].
2. During playback, use the following keys:
 - OK/⏏: Pauses or resumes playback.
 - Left: Goes back to the previous file. Moves backward in a file when pressed and held.
 - Right: Skips to the next file. Skips forward in a file when pressed and held.
 - Up: Opens the play list.
 - ▲/▼: Adjusts the volume.
 - Down: Stops playback.


Browse the web

Using a built-in web browser, you can get easy access to the wireless web to get a variety of up-to-date services and information and to enjoy downloads of web content.

Launch the web browser

In Idle mode, press [OK/⏏] twice.

Navigate the Web

- To scroll through browser items, press [Up] or [Down].
- To select an item, press <✔>.
- To return to the previous page, press <Back> or [C].
- To access browser menu options, select  or press [*].

Use Phonebook

Add an entry

To the phone's memory:

1. In Idle mode, enter a phone number and press [OK/⏏].
2. Select **Phone** → a number type.
3. Specify the contact information: First name, Last name, Mobile, Home, Office, Fax, Other, Email, Graphic ID, Alert, Group, and Notes.
4. Press <**Save**> to save the entry.

To the SIM card:

1. In Idle mode, enter a phone number and press [OK/⏏].
2. Select **SIM**.
3. Enter a name.
4. Press <**Save**> to save the entry.

Find an entry

1. In Idle mode, press <**Contacts**>.
2. Select an entry.
3. Scroll to a number and press [↵] to dial, or press [OK/⏏] to edit the contact information.

Create and send a name card

1. In Idle mode, press <**Menu**> and select **Phonebook** → **My name card**.
2. Specify your contact information.
3. Press <**Save**> to save the name card.
4. To send the name card to other people, press <**Options**> and select **Send via** → a sending method.

Send messages

Send a text message (SMS)

1. In Idle mode, press <Menu> and select **Messages** → **Create new message** → **Text message**.
2. Enter the message text and press [OK/⌘].
3. Enter destination numbers.
4. Press [OK/⌘] to send the message.

Send a multimedia message (MMS)

1. In Idle mode, press <Menu> and select **Messages** → **Create new message** → **Multimedia message**.
2. Select **Subject**.
3. Enter the message subject and press [OK/⌘].

4. Select **Picture & Video** or **Sound**.
5. For **Picture & Video**, select **Pictures** or **Videos** and add an image or video clip.
For **Sound**, select one of the sound options and add a sound clip.
6. Select **Message**.
7. Enter the message text and press [OK/⌘].
8. Press <Options> and select **Send**.
9. Enter destination numbers or e-mail addresses.
10. Press <Options> and select **Send**.

Send an e-mail

1. In Idle mode, press <Menu> and select **Messages** → **Create new message** → **Email**.
2. Select **Subject**.
3. Enter the e-mail subject and press [OK/⏏].
4. Select **Message**.
5. Enter the e-mail text and press [OK/⏏].
6. Select **File attach**.
7. Add image, video, sound, music files, or document files.
8. Press <Options> and select **Send**.
9. Enter e-mail addressees.
10. Press <Options> and select **Send**.

View messages

View a text message

When a notification appears:

1. Press <View>.
2. Select a message from the Inbox.

From the Inbox:

1. In Idle mode, press <Menu> and select **Messages** → **My messages** → **Inbox**.
2. Select a text message (✉).

View a multimedia message

When a notification appears:

1. Press <View>.
2. Select a message from the Inbox.

From the Inbox:

1. In Idle mode, press <Menu> and select **Messages** → **My messages** → **Inbox**.
2. Select an MMS message (📧).

View an e-mail

1. In Idle mode, press <Menu> and select **Messages** → **My messages** → **Email box**.
2. Select **Check new mail** to retrieve an e-mail or a header.
3. Select an e-mail or a header.
4. If you selected a header, press <Options> and select **Retrieve**.

Use Bluetooth

Your phone is equipped with Bluetooth technology which enables you to connect the phone wirelessly to other Bluetooth devices and exchange data with them, talk hands-free, or control the phone remotely.

Turn on Bluetooth

In Idle mode, press <Menu> and select **Settings** → **Bluetooth** → **Activation** → **On**.

Search for and pair with a Bluetooth device

1. In Idle mode, press <Menu> and select **Settings** → **Bluetooth** → **My devices** → **Search new device**.
2. Select a device.
3. Enter a Bluetooth PIN code or the other device's Bluetooth PIN code, if it has one, and press <OK>.

When the owner of the other device enters the same code, pairing is complete.

Send data

1. Access an application, **Phonebook**, **File manager**, or **Calendar**.
2. Scroll to an item.
3. Press <**Options**> and select **Send via** → **Bluetooth**.
4. Select a device.
5. If necessary, enter the Bluetooth PIN and press <**OK**>.

Receive data

To receive data via Bluetooth, your phone's Bluetooth feature must be active.

If necessary, press <**Yes**> to confirm the reception.

Enter text

Phrasal Pinyin, Stroke, Number, Symbol mode, English, and English word modes

You can enter text for some features such as messaging, Phonebook, or Organiser, using Chinese Phrasal Pinyin mode, Chinese Stroke modes, Number mode, Symbol mode, English mode, and English word mode.

Changing the text input mode

The text input mode indicator appears when the cursor is in a text field.

- Press the right soft key to change the text input mode.
- Press and hold [#] to move the cursor to next line.
- Press and hold [*] to switch to Symbol mode.

Using Phrasal Pinyin mode

Pinyin is a system to mark Chinese pronunciation in Latin alphabets. With the pinyin input method, you can enter Chinese words or phrases by entering the pinyin string from the phone keypad.

Entering characters in Phrasal Pinyin mode

1. Press the keys corresponding to the phonetic spelling, using the one key per letter.
Example: To enter “力” (li), press [5] and [4].
2. If necessary, press [Left] or [Right] to select the pinyin you want.
3. If necessary, press [Up] or [Down] to scroll through choices in the character selection field.
4. Press [1] to activate the character selection field. A number, 1 to 5, is added to the characters.
5. Press the number key, [1] to [5], corresponding to the character you want.

Tips for using Phrasal Pinyin mode

- Press [#] to insert a space between characters.

- If necessary, press [Up] or [Down] to scroll through choices in the character selection field.

If you are uncertain of the order of strokes, press [6] in place of each questionable stroke. Continue entering strokes until the character displays or until you finish the character.

- Press the number key, [7] to [0], corresponding to the character you want.

Tips for using Stroke modes

- Press [#] to insert a space between characters.
- Press [Left] or [Right] to move the cursor.
- Press [C] to remove strokes to the left. Holding [C] removes all of entered key strokes or characters.

Using Number mode

Number mode enables you to enter numbers.

Press the keys corresponding to the digits you want.

Using Symbol mode

Symbol mode enables you to insert symbols and emoticons.

To	Press
display more symbols	[Up] or [Down].
select a symbol	the corresponding number key.
clear the entered symbol(s)	[C].
insert the symbol(s)	<OK>.

Using English word mode

T9 is a predictive text input mode that allows you to key in any character using single keystrokes.

Entering a word in English word mode

- Press [2] to [9] to start entering a word. Press each key once for each letter.
For example, press [4], [3], [5], [5], and [6] to enter *HELLO* in T9 mode.
T9 predicts the word that you are typing, and it may change with each key that you press.

2. Enter the whole word before editing or deleting characters.
3. When the word displays correctly, go to step 4. Otherwise, press [0] to display alternative word choices for the keys that you have pressed. For example, *OF* and *ME* use [6] and [3].
4. Press [#] to insert a space and enter the next word.

Tips for using English word mode

- Press [1] to enter periods or apostrophes automatically.
- Press [*] to change case. Lower case (No indicator), Initial capital (▲), and Capital lock (⬆) are available.
- Press [#] to insert a space.
- Press the Navigation keys to move the cursor.
- Press [C] to delete characters one by one. Press and hold [C] to clear the display.

Adding a new word to the T9 dictionary

This feature may not be available for some languages.

1. Enter the word that you want to add.

2. Press [0] to display alternative words for your key presses. When there are no more alternative words, **Add word** displays on the bottom line.
3. Press <Add word>.
4. Enter the word you want using ABC mode and press <Save>.

Using ABC mode

Press the appropriate key until the character you want appears on the screen.

Keys	Characters in the order displayed	
	Upper case	Lower case
1	: ; ÿ 1 = " /	. , ? ! 1 - ' @ :
2	A B C 2 Ä Æ Å Γ	a b c 2 à ä æ å Ç
3	D E F 3 É Δ	d e f 3 é è
4	G H I 4 Θ	g h i 4 ì
5	J K L 5 Λ	j k l 5
6	M N O 6 Ñ Ö Ø Æ	m n o 6 ñ ò ö ø
7	P Q R S 7 Π Σ	p q r s 7 ß
8	T U V 8 Ü Φ	t u v 8 ù ü
9	W X Y Z 9 Ψ Ω	w x y z 9
0	0 * < > % # £	0 + () & _ \$

Tips for using ABC mode

- To enter the same letter twice or to enter a different letter on the same key, wait for the cursor to move to the right automatically or press [Right]. Then, enter the next letter.
- Press [*****] to change case. Lower case (No indicator), Initial capital (**↑**), and Capital lock (**⬆**) are available.
- Press [**#**] to insert a space.
- Press the Navigation keys to move the cursor.
- Press [**C**] to delete characters one by one. Press and hold [**C**] to clear the display.

Call functions

Advanced calling features

Making a call



1. In Idle mode, enter the area code and phone number.
2. Press [**↵**].

- Press [**C**] to clear the last digit or press and hold [**C**] to clear the whole display. You can move the cursor to edit an incorrect digit.
- Press and hold [*****] to enter a pause between numbers.

Making an international call

1. In Idle mode, press and hold [**0**]. The + character appears.
2. Enter the country code, area code, and phone number, then press [**↵**].

Redialling recent numbers



1. In Idle mode, press [] to display the list of recent numbers.
2. Scroll to the number you want and press [].

Making a call from Phonebook


Once you have stored a number in Phonebook, you can dial the number by selecting it from Phonebook. ▶ p. 41

You can also use the speed dial feature to assign your most frequently called numbers to specific number keys. ▶ p. 43

You can quickly dial a number from the SIM card using the location number assigned when stored.


1. In Idle mode, enter the location number for the phone number you want and press [].
2. Find the number you want.
3. Press <**Dial**> or [] to dial the number you want.

Ending a call





Close the phone or press [].

Answering a call

When you receive an incoming call, the phone rings and displays the incoming call image.

Press <**Accept**> or [] to answer the call.


Tips for answering a call

- When **Anykey answer** is active, you can press any key, except for <**Reject**>, [, and []. ▶ p. 85
- When **Active folder** is active, you can simply open the phone. ▶ p. 85
- Press <**Reject**> or [] to reject a call.
- Press and hold [] to reject the call or mute the ringer, depending on the **Volume key** setting. ▶ p. 84

Viewing missed calls

If you have missed calls, the screen displays how many calls you have missed.

1. Press <**View**>.
2. If necessary, scroll through the missed calls.

- Press [

Using the headset

Use the headset to make or answer calls without holding the phone.

Connect the headset to the jack on the left side of the phone.

The button on the headset works as listed below:


To	Press
redial the last call	the button once and hold the button.
answer a call	the button.
end a call	the button.

Options during a call

You can access a number of functions during a call.

Adjusting the volume during a call

Use [/


Press [

Placing a call on hold/Retrieving

Press <**Hold**> or <**Retrieve**> to place a call on hold or retrieve the call.

Making a second call

You can make another call if your network supports it.

- Press <**Hold**> to put the call on hold.
- Make the second call in the normal way.
- Press <**Swap**> to switch between the calls.
- Press <**Options**> and select **End held call** to end the call on hold.
- To end the current call, press [].

Answering a second call

You can answer an incoming call while already on the phone, if your network supports it and you have activated the call waiting feature. ► p. 89

1. Press [**↶**] to answer the call. The first call is automatically put on hold.
2. Press <**Swap**> to switch between the calls.
3. Press <**Options**> and select **End held call** to end the call on hold.
4. To end the current call, press [**📞**].

Using the Speakerphone feature

Use the speakerphone feature to talk and listen with the phone a short distance away.

Press [**OK/⏏**] to activate the Speakerphone feature. Press the key again to switch back to the earpiece.

Using In-call options

Press <**Options**> to access the following options during a call:

- **Voice clarity on/Voice clarity off:** remove extraneous noise and increase all call quality so that the person with whom you are speaking can hear you clearly even if you are in a noise place.

- **Mute/Unmute:** switch off the phone's microphone so that the other person on the phone cannot hear you, or switch it back on.
- **Mute keys/Send keys:** switch the key tones on or off.

To communicate with answering machines or computerised telephone systems, **Send keys** must be selected.

- **Phonebook:** access the contact list.
- **Transfer:** You can transfer the currently active call to a caller on hold, if your network supports it. With this option, the two callers can talk to each other, but you are disconnected from the call.
- **Send DTMF:** send the DTMF (Dual tone multi-frequency) tones as a group. The DTMF tones are the tones used in phones for tone dialling, sounding when you press the number keys. This option is helpful for entering a password or an account number when you call an automated system, like a banking service.
- **Message:** read an incoming message and send a new message. ▶ p. 57

- **Switch to headset/Switch to phone:** switch the call to a Bluetooth headset or hands-free car kit or back to the phone.
- **SIM service:** access special services, such as news, weather forecasts, entertainment, and location services, provided by your SIM card. This option is available when you use a SIM card supporting SIM AT menus.
- **Join:** set up a multi-party call by adding a caller on hold to a currently active call. You can include up to five people on a multi-party call.
- **Split:** have a private conversation with one multi-party call participant. The other participants can converse with each other. After the private conversation, select **Join** to return to the multi-party call.
- **End held multiparty:** end the multiparty call on hold when you have a private conversation with one multiparty call participant.
- **Remove:** disconnect one multi-party call participant.

Menu functions

All menu options listed

Call records *(Menu 1)*

Use this menu to view the calls you have dialled, received, or missed and the length of your calls. You can also check the cost of your calls, if your SIM card supports this function.

To access this menu, press <**Menu**> in Idle mode and select **Call records**.

Recent contacts *(Menu 1.1)*

This menu displays the most recent calls dialled, received, or missed.

Accessing a call record

1. Press [Left] or [Right] to move to another call type.
2. Press [Up] or [Down] to scroll through the call list.
3. Press [OK/*i*] to view the details of a call, or [*↶*] to dial a number.

Using call record options

While viewing call details, press <**Options**> to access the following options:

- **Save as contacts:** save the number to Phonebook.
- **Send message:** send an SMS or MMS message to the selected number.
- **Delete:** delete the selected call record or all records.

Missed calls (Menu 1.2)

This menu displays the most recent calls that you did not answer.

Dialled calls (Menu 1.3)

This menu displays the most recent calls you have dialled.

Received calls (Menu 1.4)

This menu displays the most recent calls you have received.

Delete all (Menu 1.5)

Use this menu to delete all of the records in each call type.

1. Press [**OK/ĭ**] to check the call records to be cleared.
2. Press <**Delete**>.
3. Press <**Yes**> to confirm the deletion.

Area code (Menu 1.6)

Your phone provides you with various area and country codes to let you quickly and easily dial phone numbers.

To find an area or country code:

1. press the <**Select**> soft key.
2. press <**Paste**> soft key.
3. Press the **Save** soft key or enter the rest of the phone number you want to dial.

Call time (Menu 1.7)

This menu displays the time log for calls made and received. The actual time invoiced by your service provider will vary.

- **Last call time:** check the length of your last call.
- **Total sent:** check the total length of all the calls you have dialled.
- **Total received:** check the total length of all the calls you have received.
- **Reset timers:** reset the call timers. You need to enter the phone password.

The password is preset to **00000000**. You can change this password. ▶ p. 93

Call costs (Menu 1.8)

This network feature displays the cost of calls. This menu is available only if your SIM card supports this feature. Note that this is not intended to be used for billing purposes.

- **Last call cost:** check the cost of your last call.

- **Total cost:** check the total cost of all of your calls. If the total cost exceeds the maximum cost set in **Set max cost**, you must reset the counter before you can make another call.
- **Max cost:** check the maximum cost limit set in **Set max cost**.
- **Reset counters:** reset the cost counters.
- **Set max cost:** set the maximum cost authorised for your calls.
- **Price/Unit:** set the price per unit that is applied when the cost of your calls is calculated.

Phonebook (Menu 2)

You can store phone numbers on your SIM card and in your phone's memory. The SIM card and phone's memory are physically separate, but they are used as a single entity called Phonebook.

To access this menu, press <**Menu**> in Idle mode and select **Phonebook**.

Contact list (Menu 2.1)

Use this menu to search for numbers in Phonebook.

Finding an entry

1. Enter the first few letters of the name that you want to find.
2. Select the name you want from the list.
3. Press [**↶**] to dial the number, or [**OK/i**] to edit the contact information.

Using Phonebook options

While viewing contact details, press <**Options**> to access the following options:

- **Edit**: edit the contact information.
- **Send message**: send an SMS or MMS message.
- **Copy**: copy the selected number to the phone's memory, the SIM card, or the FDN list.
- **Send via**: send the contact via SMS, MMS, e-mail, or Bluetooth.
- **Delete**: delete the selected contact.
- **Print via Bluetooth**: print the contact information by connecting the phone to a printer via Bluetooth.

FDN list (Menu 2.2)

Use this menu to create a list of contacts to be used in FDN (Fixed Dialling Number) mode, in which the phone allows outgoing calls only to the specified phone numbers, if your SIM card supports this feature. You can activate FDN mode in the **FDN mode** menu. ▶ p. 93

Adding a contact

1. From the FDN list, press <**Options**> and select **Add**.
2. Enter your PIN2 and press <**OK**>.
3. Enter information about the contact.
 - **Name**: assign a name.
 - **Phone number**: add a number.
 - **Location**: assign a location number.
4. Press <**Save**> to save the contact.

Using Phonebook options

You can access contact options by pressing <**Options**> in Contact list.

Add new contact (Menu 2.3)

Use this menu to add a new contact to Phonebook.

Storing a number in the phone's memory

1. Select **Phone**.
2. Change the settings or enter information about the contact.
 - **Last name/First name:** assign a name.
 - **Mobile/Home/Office/Fax/Other:** add a number in any category.
 - **Email:** assign an e-mail address.
 - **Graphic ID:** assign an image as a caller ID image to alert you to a call from the person.
 - **Alert:** assign a ringtone to alert you to a call from the person.
 - **Group:** assign the person to a caller group.
 - **Notes:** add a memo about the person.
3. Press <**Save**> to save the contact.

Storing a number on the SIM card

1. Select **SIM**.

2. Enter information about the contact:
 - **Name:** assign a name.
 - **Phone number:** add a number.
 - **Location:** assign a location number.

To assign a caller ID image, ringtone, or group, the contact must be saved to the phone's memory.

3. Press <**Save**> to save the contact.

Group (Menu 2.4)

Use this menu to organise your contacts in caller groups.

Adding members to a caller group

1. Select a group.
2. Press <**Add**>.
3. Select the contact you want to add to the selected group.
4. To add more members, press <**Options**> and select **Add** → a contact. Repeat this as desired.

Managing caller groups

While viewing the group list, press <**Options**> to access the following options:

- **View:** display the members of the selected group.
- **Add:** add a new group.
- **Edit:** edit the properties of the selected group.
- **Send message:** send an SMS, MMS, or e-mail message to the members you want.
- **Delete:** delete the selected group. Group members, however, will not be deleted from Phonebook.

Speed dial *(Menu 2.5)*

Use this menu to assign a speed dial number (2 to 9) for eight of your most frequently called numbers.

Assigning speed dial numbers

1. Select a key location from **2** to **9**. **1** is reserved for your voice mail server.
2. Select a contact from the contact list or the FDN list.
3. Scroll to a number, if the contact has more than one number.

4. Press <**Select**>.

Managing speed dial entries

From the Speed dial screen, press <**Options**> to access the following options:

- **Add:** assign a number to an unassigned key.
- **View:** display the number assigned to the key.
- **Change:** assign a different number to the assigned key.
- **Remove:** clear the speed dial setting for a key.

Dialling speed dial entries

In Idle mode, press and hold the appropriate key.

My name card *(Menu 2.6)*

Use this menu to create your name card and send it to other people.

Saving your name card

The procedure for creating your name card is the same as the one for saving a phone number in the phone's memory. ► p. 42

Using name card options

After saving your name card, press <**Options**> to access the following options:

- **Edit**: edit the name card.
- **Send via**: send the name card via SMS, MMS, e-mail, or Bluetooth.
- **Exchange namecard**: exchange name cards with another person via Bluetooth.
- **Remove**: delete the name card.
- **Print via Bluetooth**: print the name card information by connecting the phone to a printer via Bluetooth.

Own number *(Menu 2.7)*


Use this feature to check your phone numbers, or to assign a name to each of the numbers. Changes made here do not affect the actual subscriber numbers in your SIM card.

Management *(Menu 2.8)*

Use this menu to manage Phonebook.

- **Default saving**: select a default memory location for saving contacts. If you select **Ask on saving**, the phone will ask you to select a memory location each time you save a number.
- **Copy all to phone**: copy all of the contacts stored on the SIM card to the phone's memory.
- **Delete all**: delete all of the contacts from your phone's memory, or your SIM card.
- **Memory status**: display the number of contacts you have stored in Phonebook.

Service number *(Menu 2.9)*

Use this menu to view the list of Service Dialling Numbers assigned by your service provider, including emergency numbers, directory enquiries, and voice mail numbers. This menu is available if your SIM card supports SDNs. Scroll to the number you want and press <**Dial**> or [].

Applications *(Menu 3)*

Use this menu to play Java games or motion games, play music files, or to enjoy beatbox. You can also use convenient features, such as a voice recorder, alarm clock, calculator, converter, and stopwatch.

To access this menu, press <Menu> in Idle mode and select **Applications**.

MP3 Player *(Menu 3.1)*

Use this menu to enjoy music. First, you need to save MP3 files in your phone's memory.

Downloading or receiving music files

Use these methods to save MP3 files to your phone's memory:

- Download from the wireless web ► p. 54
- Download from a computer using the Samsung PC Studio program ► Samsung PC Studio User's Guide
- Receive via Bluetooth ► p. 92

Creating a play list

Add MP3 files to the play list so you can play them.

1. From the MP3 player screen, press <Options> and select **Add to list**.
2. Select either of the following options:
 - **Add all**: add all of the files in the phone's memory to the play list.
 - **Add a file**: add a file to the play list.
3. If you selected **Add a file**, press [OK/↵] to check the files to be added and press <Add>.
4. Press <Back> to go back to the MP3 player screen.

Playing music files

From the MP3 player screen, press [OK/↵].

During playback, use the following keys:

Keys	Function
OK/↵	Pauses or resumes playback.
Left	Goes to the previous file. Goes backward in a file when held down.

Keys	Function
Right	Skips to the next file. Skips forward in a file when held down.
Up	Opens the play list.
▲ / ▼	Adjusts the volume level.
2	Changes the skin image.
3	Changes the repeat mode.
6	Turns Shuffle mode on or off.
Down	Stops playback.

Using the Movement Recognition feature

During playback, close the phone without interrupting you can enjoy MP3 music with the phone closed.

You can control the MP3 player using the Movement Recognition feature. This means that you can move the phone to perform the tasks, instead of keying in commands. ► p. 16

Using player options

During playback, press <**Options**> to access the following options:

- **Play/Pause:** begin or pause playback.
- **Transfer to A/V headset:** switch to Bluetooth headset mode. A normal headset is not compatible with the MP3 player. Use only a Bluetooth stereo headset.
- **Open play list:** display the play list.
- **Delete:** delete the file.
- **Settings:** change the default settings for playing music files.
 - Repeat mode:** select a repeat mode.
 - Shuffle:** set the MP3 player to play music in random order.
 - Visualization:** select an equalizer type.
 - Volume:** select a volume level.
- **Properties:** access the file properties.
- **Gesture help:** shows the keys you can use during playback.

Accessing the play list

From the MP3 player screen, press [Up]. Press <**Options**> to access the following options:

- **Play via:** select a sound output mode, **Phone** or **A/V headset**.
- **Add to list:** add files to the play list.
- **Move list:** move the file to the position you want within the play list.
- **Remove:** remove the selected file or all files from the play list.
- **Gesture Help:** show the keys you can use during playback.

Voice recorder *(Menu 3.2)*

Use this menu to record voice memos. A voice memo can be up to one hour long.

Recording a voice memo

1. Press [OK/⏏] to start recording.
2. Speak into the microphone.
Press [OK/⏏] to pause or resume the recording.

3. When you have finished, press <**Save**>. The voice memo is saved automatically.
4. Press [OK/⏏] to review the voice memo, or [Up] to record a new memo.

Playing a voice memo

1. From the Voice record screen, press <**Options**> and select **Go to voice list**.
2. Select a voice memo. The memo plays.

During playback, use the following keys:

Keys	Function
OK/⏏	Pauses or resumes playback.
Left	Moves backward in a memo.
Right	Moves forward in a memo.
▲ / ▼	Adjusts the volume.
Down	Stops playback.

Changing the voice recorder settings

You can change the recording settings for the voice recorder. Before recording a voice memo, press



<**Options**> and select **Settings** to access the following options:

- **Recording time:** select a recording time.
- **Volume:** select a volume level.
- **Default name:** change the default prefix of the voice memo.

Java world *(Menu 3.3)*

Use this menu to access and play a Java game and Motion games and to set up a profile for accessing Java services.


Playing Screamer

1. From the Java world screen, select **Downloads** → **Screamer**.
2. Press any key except [>] and [>].
3. Select **NEW GAME** → a game mode.
4. Press [OK/⏎] to start a game.
5. Enter a character name and press [OK/⏎].

6. Set height, weight, and nation for the character and press [OK/⏎].
7. Set length, width, and weight for the luge and press [OK/⏎].
8. Press [OK/⏎] to start game.
9. Tilt the phone up to make the character move forward.
10. Tilt the phone up or down to adjust the speed of the luge.
Tilt the phone to the left or right to change the direction of the luge.

During a game, press <**Menu**> to access game options.


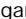
Playing Pharaoh's Treasure

1. From the Java world screen, select **Downloads** → **Pharaoh's Treasure**.
2. Press any key except [>].
3. Select **Start** → **New Game**.
4. Press <**OK**>.

5. Tilt the phone to the right to make the character move forward.
6. Tilt the phone to the left, right, up, or down to move the character.

During a game, press <MENU> to access game options.

Playing Freekick

1. From the **Java world** menu, select **Downloads** → **Freekick**.
2. Press any key except [].
3. Select **Game** → the game mode you want → a team → a player.
4. Press [OK/] to start a game.

During a game, press [#] to access game options.

Using Java game options

From the Java world screen, select **Downloads** and press <Options> to access the following options:

- **Launch:** launch the selected game.

- **Application settings:** set a game to be continued when a call comes in or an alarm sounds during the game. You can also set the phone to exchange game information with the network while playing an online game or when you need to connect to the Internet.
- **Delete:** delete the selected game.
- **Properties:** access the game properties.

Configuring Java settings

You can configure profile settings for accessing Java services.

1. From the Java world screen, select **Settings**.
2. Change the following settings:
 - **APN:** enter the access point name.
 - **Login ID:** enter the user ID.
 - **Password:** enter the password.
 - **Proxy:** select whether or not you use a proxy server to access network services. Depending on this setting, options in **Proxy settings** vary.
 - **Proxy settings:** provide you with the following options:

When the proxy is set to **Enable**:

IP address: enter the HTTP proxy IP address.

Port: enter the proxy port number.

When the proxy is set to **Disable**:

DNS1: enter the primary address.

DNS2: enter the secondary address.

Checking memory status

You can view the total amount of memory for the games as well as the amount of used memory.

From the Java world screen, select **Memory status**.

Shake and play *(Menu 3.4)*

Use this menu to enjoy games and beatbox rhythms using the Movement Recognition feature.

Motion beatbox *(Menu 3.4.1)*

You can play with the beatbox by shaking your phone.

Setting the beatbox

From the Shake and Play screen, press <**Settings**> to access the following options:

- **Type**: select a beatbox instrument type.
- **Instrument 1**: select the primary instrument.
- **Volume**: select the volume level for the primary instrument.
- **Instrument 2**: select the secondary instrument.
- **Volume**: select a volume level for the secondary instrument.

Using the beatbox

Shake your phone. You can switch to the other instrument you selected by pressing [Motion].

Dice *(Menu 3.4.2)*

You can roll the dice by shaking your phone.

You can set the number of dice to roll by pressing <**Settings**> and entering a number.

Lottery *(Menu 3.4.3)*

You can choose numbers lottery-style by shaking your phone. The numbers appear on the screen.

You can customise the settings for random number selection. Press <**Settings**> to access the following settings:

- **Lowest number (1-49)**: set the lowest available number.
- **Highest number (2-50)**: set the highest available number.
- **Number of balls (1-10)**: set the number of balls to be used.

World time *(Menu 3.5)*

Use this menu to set your local time zone and find out what time it is in another part of the world.

Setting your local time zone

1. From the world map, press [Left] or [Right] to select the city that corresponds to your home time zone. As the time line moves, the time and date of the given zone display.
2. Press [OK/⏏] to save the time zone.

Viewing and setting a foreign time zone

1. From the world map, press [Down].

2. Press [Left] or [Right] to select the foreign time zone you want to view.
3. Press [OK/⏏] to save the time zone.

Applying Daylight Savings Time

1. From the world map, press <**Options**> and select **Set daylight saving time**.
2. Press [OK/⏏] to check the time zone(s) you want.
3. Press <**Save**>.

Alarm *(Menu 3.6)*

Use this menu to set alarms. The alert type for a normal alarm corresponds to the call alert type settings. A wake-up alarm is not affected by your sound settings.

Setting an alarm

1. Select the type of alarm.
2. Set each alarm option.
 - **Alarm**: activate the alarm.
 - **Alarm time**: enter the time for the alarm to ring.

- **AM/PM:** set **AM** or **PM** in 12-hour format.
- **Alarm day:** select the alarm days.
- **Alarm tone:** select an alarm tone.

3. Press <**Save**>.

Stopping an alarm

- For a non-morning call, press any key to stop the alarm.
- For a morning cal, press <**Confirm**> or [OK/⏏] to stop the alarm.

Press <**Snooze**> or any key except <**Confirm**> and [OK/⏏], to stop the alarm and cause it to sound again after 5 minutes. You can do this a maximum of 5 times.

- To deactivate an alarm, access it from the Alarm list and select **Off** from the **Alarm** field.

Setting the alarm to ring even if the phone is off

From the Alarm screen, select **Auto power** → **On**.

If the phone is off when it is time for the alarm to ring, the phone switches on and sounds the alarm.

Calculator (Menu 3.7)

Use this menu to perform basic arithmetic functions, such as addition, subtraction, multiplication, and division.

1. Enter the first number.
 - Press left soft key to insert a decimal point or brackets.
 - Press [*****] or [**#**] to move the cursor.
2. Enter the operation for your calculation by pressing the Navigation keys.
3. Enter the second number.
4. Press [OK/⏏] to view the result.

Convertor (Menu 3.8)

Use this menu for common conversions, such as weight and temperature.

Performing a conversion

1. Select the convertor type you want.
2. Press [Left] or [Right] to select the original unit and press [Down].

- Enter the value to be converted and press [Down].
 - Press [*****] to insert a decimal point.
 - Press [**#**] to change the temperature to above zero (+) or below zero (-).
- Press [Left] or [Right] to select the unit you want to convert.
The equivalent value for the amount you entered displays.

Using convertor options

Press <**Options**> to access the following options:

- Clear:** clear the current values.
- Reverse:** reverse the conversion.

Timer *(Menu 3.9)*

Use this menu to set a period of time for the phone to count down. The phone will sound an alarm when the specified period of time has expired.

Starting the timer

- Press <**Set**>.

- Enter the length of time you want to count down and press <**OK**>.
- Press [**OK/!**] to start counting down.

Stopping the timer

- Press <**Back**> or any key when the timer rings.
- Press [**OK/!**] on the Timer screen to stop the timer before it rings.

Stopwatch *(Menu 3.10)*

Use this menu to measure elapsed time. The maximum time is 10 hours.

- Press [**OK/!**] to start the stopwatch.
- Press [**OK/!**] to check an interval. You can repeat this step for a total of 4 intervals.

SIM-AT *(Menu 3.11)*

This menu is available if you use a SIM-AT card that provides additional services, such as news, weather, sports, entertainment, and location services. Available services may vary, depending on your service provider's plans.

For details, see your SIM card instructions or contact your service provider.

Browser *(Menu 4)*

The Wireless Application Protocol (WAP) browser on your phone allows you to access the wireless web. Using the web browser, you can access up-to-date information and a wide variety of media content, such as wallpapers, ringtones, and music files.

To access this menu, press **<Menu>** in Idle mode and select **Browser**.


Home *(Menu 4.1)*

Use this menu to connect your phone to the network and load the homepage of the wireless web service provider. You can also press [OK/**i**] in Idle mode.

Navigating the web browser

To	Press
scroll through browser items	[Up] or [Down].
select a browser item	<✓>.
return to the previous page	< Back > or [C].

Using browser menu options

From any web page, select  or press [*****].

- **Back:** go back to the previous page.
- **Home:** go back to the homepage.
- **Exit:** exit the web browser.
- **Reload:** reload the current page.
- **Show URL:** display the URL address of the current webpage. You can also set the current page as the homepage for the web browser.
- **About...:** access version information and copyright for your web browser.

Using web page options

From any web page, press [#] to access the following options:

- **Go to URL:** enter a URL address manually.
- **Bookmarks:** switch to the **Bookmarks** menu.
▶ p. 55
- **Messages:** check the messages stored in the **My messages** folder. You can also create and send a new SMS message. ▶ p. 60
- **File manager:** switch to the **File manager** menu. ▶ p. 70

Exiting the web browser

Press [⌂] to exit the browser.

Fun Club (Menu 4.2)

Use this menu to access Samsung Fun Club, the preset web site providing Samsung mobile phone users with attractive download services of updated ringtones and wallpapers. You can download:

SFC home (Menu 4.2.1)

Selecting this menu loads the Samsung Fun Club homepage.

For further details about this service, contact your service provider.

Service area (Menu 4.2.2)

Each time you move to HongKong or China, you need to change this setting to use the SFC service, according to the area where you are. You can choose either **China** or **China HK**.

Bookmarks (Menu 4.3)

Use this menu to save URL addresses in order to quickly access websites.

Adding a bookmark

1. Select an empty location.
2. Enter a name for the bookmark and press [Down].
3. Enter a URL address and press <**Save**>.

Accessing a bookmarked page

Scroll to a bookmark item and press [OK/⏏].

Using bookmark options

After saving items, press <**Options**> to access the following options:

- **Go**: access the bookmarked website.
- **Edit**: edit the bookmark.
- **Delete**: delete the selected bookmark or all bookmarks.

Go to URL *(Menu 4.4)*

Use this menu to manually enter the URL address of a website and access the website.

Clear cache *(Menu 4.5)*

Use this menu to clear the cache, a temporary memory that stores recently accessed web pages.

Profile settings *(Menu 4.6)*

Use this menu to set up servers for the web browser. Contact your service provider for details about your setting options.

For each server, the following options are available:

- **Profile name**: assign a name to the server profile.
- **Home URL**: set the address of your homepage.
- **Bearer**: select a bearer for each type of network address accessed.
- **Proxy**: select whether or not the phone uses a proxy server to launch the web browser. Your service provider can tell you if your network requires a proxy server, and they can give you the appropriate settings.
- **GPRS settings**: customise the GPRS network settings:

*When the proxy is set to **Enable**:*

Proxy IP: enter the proxy IP address.

Proxy port: enter the proxy port number.

APN: enter the access point name of the GPRS network gateway.

Login ID: enter the user ID.

Password: enter the password.

*When the proxy is set to **Disable**:*

DNS1: enter the primary address.

DNS2: enter the secondary address.

APN: enter the access point name of the GPRS network gateway.

Login ID: enter the user ID.

Password: enter the password.

- **GSM settings:** customise the GSM network settings:

*When the proxy is set to **Enable**:*

Proxy IP: enter the proxy IP address.

Proxy port: enter the proxy port number.

Dial number: enter the PPP server phone number.

Login ID: enter the user ID.

Password: enter the password.

Data call type: select a data call type.

*When the proxy is set to **Disable**:*

DNS1: enter the primary address.

DNS2: enter the secondary address.

Dial number: enter the PPP server phone number.

Login ID: enter the user ID.

Password: enter the password.

Data call type: select a data call type.

Current profile (Menu 4.7)

Use this menu to select a connection profile for accessing the web browser.

Messages (Menu 5)

Use the **Messages** menu to send and receive text messages, multimedia messages, and e-mails. You can also use push message and cell broadcast message features.

To access this menu, press <**Menu**> in Idle mode and select **Messages**.

Create new message (Menu 5.1)

Use this menu to create and send SMS, MMS, or e-mail messages.

Text message (Menu 5.1.1)

Short Message Service (SMS) allows you to send or receive text messages that may include pictures, animated images, and melodies.

1. Enter your message.

The maximum number of characters allowed in a text message varies by your service provider. If your message exceeds the maximum number of characters, the phone will split the message.

2. Press **<Options>** to access the following options for creating a message:

- **Insert:** add a template, Phonebook entry, or bookmark.
- **Add picture/Add animation/Add melody:** attach a simple image, animated image, or melody.
- **Attach:** attach a name card or calendar data as a data format attachment.
- **Save to:** save the message to **Draft**, or **My folder**.
- **Text style:** change the text attributes.

3. When you have finished, press **<Options>** and select **Save and send** or **Send only**.

4. Enter a destination number.

To send the message to more than one recipient, fill in additional destination fields.

5. Press [**OK/**↵] to send the message.

Multimedia message (Menu 5.1.2)

Multimedia Message Service (MMS) allows you to send or receive multimedia messages containing a combination of text, image, video, and audio, from phone to phone or from phone to e-mail.

1. Select the **Subject** line.
2. Enter the message subject and press [**OK/**↵].
3. Select the **Picture & Video** or **Sound** line and add an image, a video, or a sound file.

• The maximum size allowed for an MMS message can differ depending on the country.
• Depending on the file type or DRM (Digital Rights Management) system, some files may not be able to be forwarded.

4. Select the **Message** line.
5. Enter the message text and press [**OK/**↵].
6. Press **<Options>** to access the following options for editing the message:
 - **Edit:** edit the subject or text of your message.

- **Change image/Change video/Change sound:** replace an added item.
 - **Preview:** check the message you created.
 - **Save to:** save the message to **Draft**, **My folder**, or **Templates**.
 - **Add page:** add pages. Move to each page by pressing [Left] or [Right] on the message screen.
 - **Delete page:** delete an added page.
 - **Edit page:** set the page duration or move to another page.
 - **Attach:** attach Phonebook entry as name cards or calendar data as a data format attachment.
 - **Remove subject/Remove message/Remove media/Remove sound:** remove an added item.
7. When you have finished, press <**Options**> and select **Send**.
8. Enter a phone number or e-mail address.
To send the message to more than one recipient, fill in additional destination fields.

9. Press <**Options**> and select **Send** to send the message.

Email (Menu 5.1.3)

You can send e-mails that include text and media files, such as images, videos, and audio. To use this feature, you need to subscribe to an e-mail service and set up your e-mail account and profile. ▶ p. 68

1. Select the **Subject** line.
2. Enter the subject of your e-mail and press [OK/↵].
3. Select the **Message** line.
4. Enter the e-mail text and press [OK/↵].
5. Select the **File attach** line and select one of the following options to add files.
 - **Add image/Add videos/Add sounds/Add music:** add media files stored in the phone's memory.

Depending on the file type or DRM (Digital Rights Management) system, some files may not be able to be forwarded.
 - **Other files:** add document files stored in the **Other files** folder.

- **Save to:** save the message in the **Drafts** or **My folder** box.
 - **Attach:** attach name cards or calendar data as data format attachments.
6. Press <**Options**> to access the following options to edit the e-mail:
- **Edit:** edit the subject or text.
 - **Remove subject/Remove message:** clear the subject or text.
 - **Save to:** save the message in the **Drafts** or **My folder** box.
 - **Remove:** delete the selected attachment or all attachments.
 - **Remove all attachments:** delete all attachments.
7. When you have finished, press <**Options**> and select **Send**.
8. Enter an e-mail address.
To send the e-mail to more than one recipient, fill in additional destination fields.
9. Press <**Options**> and select **Send** to send the e-mail.

My messages (Menu 5.2)





Use this menu to access the messages you have received, sent, or which have failed in sending.

Inbox (Menu 5.2.1)

This folder stores all types of the messages you have received, except for e-mails.

Viewing a message

The following icons may appear on the message list to show the message type:

-  SMS
 -  MMS
 -  MMS notification
 -  Push messages
- Depending on the DRM (Digital Rights Management) system, messages having web content may not be able to be forwarded.
 - An **!** icon next to a message means that the message is of high priority. A grey-coloured message icon indicates low priority.
 - If you receive vcards or vcalendar data as an SMS message from another manufacturer's phone, the message will not display correctly.

Using message options

While viewing a message, press <**Options**> to access the following options:

SMS messages

- **Reply via:** send a reply message via SMS or MMS.
- **Forward:** forward the message to other people.
- **Delete:** delete the message.
- **Move to phone/Move to SIM:** move the SMS message to the phone's memory or the SIM card.
- **Add to block list:** add the sender's number to the Block number list.
- **Cut address:** extract URLs, e-mail addresses, or phone numbers from the message.
- **Cut media:** save media content from the message into your phone's memory.
- **Protection:** protect the message from being deleted.
- **Print via Bluetooth:** print the message by connecting the phone to a printer via Bluetooth.

MMS messages/MMS notifications

- **Retrieve:** retrieve the MMS message.
- **Reply via SMS:** send a reply message via SMS.
- **Reply via MMS to:** send a reply message via MMS.
- **Forward:** forward the message to other people.
- **Delete:** delete the selected message.
- **Add to block list:** add the sender's number to the Block number list.
- **Cut address:** extract URLs, e-mail addresses, or phone numbers from the message.
- **Cut media:** save media content from the message into your phone's memory.
- **Properties:** access the message properties.

Push messages

- **Go to URL:** connect to the URL from which the message is sent.
- **Delete:** delete the message.
- **Cut address:** extract URLs, e-mail addresses, or phone numbers from the message.

Delivery reports

- **View:** display the message.
- **Delete:** delete the report.

Draft *(Menu 5.2.2)*

This folder stores messages you have saved to send at a later time.

When you select a message, it opens in Edit mode so that you can edit and send the message.

Outbox *(Menu 5.2.3)*

This folder stores messages that the phone is attempting to send or has failed to send.

While viewing a message, press <**Options**> to access the following options:

- **Cancel sending:** cancel sending the message, if the message is being sent.
- **Open file:** open the selected file.
- **Save file:** save the selected file.
- **Send again:** resend the message.
- **Forward:** forward the message to other people.

- **Delete:** delete the selected message.
- **Move to phone/Move to SIM:** move the message to the phone's memory or the SIM card.
- **Protection:** protect the message from being deleted.
- **Print via Bluetooth:** print the message by connecting the phone to a printer via Bluetooth.
- **Properties:** access the message properties.

Sent box *(Menu 5.2.4)*

This folder stores messages that you have sent.

While viewing a message, press <**Options**> to access the following options:

- **Open file:** open the selected file.
- **Save file:** save the selected file.
- **Forward:** forward the message to other people.
- **Delete:** delete the selected message.
- **Move to phone/Move to SIM:** move the message to the phone's memory or the SIM card.
- **Cut address:** extract e-mail addresses, URLs, and phone numbers from the e-mail.

- **Print via Bluetooth:** print the message by connecting the phone to a printer via Bluetooth.
- **Protection:** protect the message from being deleted.
- **Properties:** access the message properties.




Email box *(Menu 5.2.5)*


This folder stores e-mails that you have received.

1. Select an e-mail account.
2. Press <**Select**> when **Check new mail** displays, or press <**Options**> and select **Check new mail**.

The phone checks for new e-mails and retrieves received e-mails.

The following icons may appear on the list to show the e-mail status:

-  Retrieved from the server
-  Being retrieved
-  Failed to retrieve.

 An ! icon next to a message means that the message is of high priority. A grey-coloured message icon indicates low priority.

3. Select an e-mail or header.
4. If the e-mail has more than one page, press [▲/▼] to scroll through pages one by one.
Press and hold [▲/▼] to move to the first or last page.
5. Press [#] or [*] to move to the previous or next e-mail.

While viewing the e-mail content, press <**Options**> to access the following options:

- **Retrieve:** retrieve the body of the e-mail from the e-mail server.
- **Open file:** open the selected file.
- **Save file:** save the selected file or all files.
- **Reply to:** send a reply message to the sender or to all recipients.
- **Forward:** forward the e-mail to other people.
- **Delete:** delete the e-mail.
- **Add to block list:** add the sender's e-mail address or the e-mail subject to the Block list.
- **Cut address:** extract e-mail addresses, URLs, and phone numbers from the e-mail.

- **Cut attachment:** save the selected attachment or all attachments from the e-mail to your phone's memory.
- **Print via bluetooth:** print the message by connecting the phone to a printer via Bluetooth.
- **Protection:** protect the e-mail from being deleted.
- **Properties:** access the e-mail properties.

My folder *(Menu 5.2.6)*

Use this menu to view the message you have moved using the **Move to My folder** option while viewing a message list.

Templates *(Menu 5.3)*

Use this menu to make and use templates of frequently used messages.

Text template *(Menu 5.3.1)*

You can create SMS templates with the sentences you use frequently so that you can retrieve and insert them when composing an SMS message.

Creating a template

1. Select an empty location.
2. Enter a message and press [OK/↵].

Using template options

From the template list, press <**Options**> to access the following options:

- **Edit:** edit the template.
- **Send message:** send the template as an SMS, MMS, or e-mail.
- **Delete:** delete the selected template.

MMS Template *(Menu 5.3.2)*

You can access default MMS templates or ones you have saved so that you can use them in composing an MMS message.

From the template list, press <**Options**> to access the following options:

- **View:** open the template.
- **Send message:** send the template as an MMS message.
- **Edit:** edit the template.

- **Add new:** add a new template.
- **Delete:** delete the selected template or all templates. You cannot delete the default templates.

Delete all *(Menu 5.4)*

Use this menu to delete messages in each message folder all at once.

1. Press [OK/⏏] to check the message boxes you want.
2. Press <Delete>.
3. Press <Yes> to confirm the election.

Settings *(Menu 5.5)*

Use this menu to set up various options for using the messaging service.

Text message *(Menu 5.5.1)*

You can configure SMS settings.

- **Send settings:** set up the options for sending SMS messages:

Reply path: allow recipients to reply to you through your SMS server.

Delivery report: set the network to inform you when your messages have been delivered.

Validity period: set the length of time your messages are stored in the SMS server.

Message type: set the default message type. The network can convert the messages into the selected format.

Service centre: store or change the number of your SMS server.

- **Block number:** specify phone numbers from which messages will not be accepted.

Multimedia message *(Menu 5.5.2)*

You can configure MMS settings.

- **Send settings:** set up the options for sending MMS messages:

Delivery report: set the network to inform you when messages have been delivered.

Address hiding: set your address to be hidden from the recipient's phone.

Read reply: determine whether or not the phone sends a read-reply request.

Priority: set the priority level of your outgoing messages.

Expiry Date: set the length of time your messages are stored in the MMS server.

Delivery after: set a time delay before messages are sent.

Send size: select the maximum file size of MMS attachment. This file size may vary, depending on your country.

- **Receive settings:** set up the options for receiving MMS messages:

Anonymous reject: reject messages from anonymous senders.

Advert allowed: accept advertisements.

Report allowed: set the network to inform the sender when a message has been delivered to you.

Home reception: determine if your phone retrieves new messages automatically when you are in your home service area.

Roaming reception: determine if your phone retrieves new messages automatically when you are roaming on another network.

Home reception and **Roaming reception** have the following options:

- **Automatic:** the phone automatically retrieves messages from the server.
- **Reject:** the phone rejects all messages.
- **Manual:** the phone displays notifications. Use the **Retrieve** option to manually download new messages.

- **MMS profiles:** configure required network settings for MMS.

Current profile: select a connection profile.

Profile settings: configure e-mail profiles using different e-mail servers. Set the options for each account:

- **Profile name:** enter a name for the current profile.
- **Server URL:** enter the address of your MMS server.

- **Proxy:** connect to the GPRS network using the proxy server.
- **GPRS settings:** customise the settings required for connecting to the GPRS network.

*When the proxy is set to **Enable**:*

IP address: enter the IP address.

Port: enter the port number.

APN: enter the access point name used for the address of the GPRS network.

Login ID: enter the user ID.

Password: enter the password.

*When the proxy is set to **Disable**:*

DNS1: enter the primary address.

DNS2: enter the secondary address.

APN: enter the access point name used for the address of the GPRS network.

Login ID: enter the user ID.

Password: enter the password.

- **Version:** select an available OMA version and maximum size limit for sending or receiving messages.

Depending on your service provider, it may not be possible to support the maximum limit 295KB. In this case, try again after changing the setting to 100KB.

- **Block number:** specify phone numbers from which messages will not be accepted.

Email (Menu 5.5.3)

You can configure the e-mail settings.

You cannot change e-mail profile and account settings while an e-mail is being sent or retrieved.

- **Send settings:** set up the options for sending e-mails.
 - Send copy to self:** send a copy of your e-mails to your own e-mail address.
 - Delivery confirm:** set the network to inform you when your e-mails have been delivered.
 - Read confirm:** send a request for a reply along with your e-mail.

Priority: select the priority level of your outgoing e-mail.

Include signature: select to attach your name, phone number, or a simple memo to your e-mails.

Edit name: enter your name.

Edit telephone number: enter your phone number.

Edit note: enter a simple memo.

- **Receive settings:** set up the options for receiving e-mails.

Check interval: determine how often the phone checks the server for incoming e-mails.

If you set this option to **Not used**, you can use the **Check new mail** feature to check your e-mail manually.

Read reply: determine whether or not the phone sends a read-reply for incoming e-mails.

If you select **Announce**, the phone reminds you to send a read-reply.

Retrieve option: determine whether the phone retrieves headers only or the entire e-mail.

Delete option: determine whether e-mails are deleted immediately or the next time you connect to the server.

Reject if over: determine the maximum size for incoming e-mails. Your phone will reject e-mails that exceed the specified size.

Leave a copy of messages on the server: leave copies of e-mails after retrieving.

- **Email account:** set up your e-mail accounts and select one to be used:

Current account: select an account.

Account settings: configure up to five e-mail accounts using different e-mail servers. Set the options available for each account:

- **In use:** select this option to use the account and to display the account in the **Email box**.
- **Account name:** enter a name for the currently selected account.
- **User name:** enter a name to be displayed as the sender's name in your outgoing e-mails.
- **Email address:** enter your e-mail address.

- **Reply address:** enter your e-mail address to be used when the recipient sends a reply.
- **User ID:** enter your e-mail ID.
- **Password:** enter your e-mail password.
- **SMTP server:** enter the IP address or domain name of the outgoing e-mail server.
- **SMTP port:** enter the SMTP port number.
- **Protocol type:** select the protocol for the incoming e-mail server. The remaining options depend on the protocol type setting.

*When the protocol type is **POP3**:*

- **POP3 server:** enter the IP address or domain name of the server that receives your e-mail.
- **POP3 port:** enter the POP3 port number.
- **APOP login:** connect to the server by using the APOP login scheme when this option is selected.

*When the protocol type is **IMAP4**:*

- **IMAP4 server:** enter the IP address or domain name of the server that receives your e-mail.
- **IMAP4 port:** enter the IMAP4 port number.

- **Include attachments:** select this option to receive attachments with e-mails.
- **Max. Emails retrieved:** set the number of headers you will retrieve from the server.
- **Email profile:** configure the network settings required to send or receive e-mails.
Current profile: select a profile.
Profile settings: configure up to six e-mail profiles. For each profile, the following options are required to connect to the GPRS network:
 - **Profile name:** enter a name for the e-mail profile.
 - **APN:** enter the access point name used for the GPRS network address.
 - **Login ID:** enter the user ID.
 - **Password:** enter the password.
 - **DNS1:** enter the primary address.
 - **DNS2:** enter the secondary address.
- **Block list:** specify e-mail addresses from which messages will not be accepted. You can also specify message subjects that you will not accept.

Push message (Menu 5.5.4)

You can change the settings for receiving push messages from the wireless web server.

- **Receive:** set how your phone receives push messages.
- **Service centre:** specify the address of the server from which you want to receive push messages.

Broadcast messages (Menu 5.6)

The Cell Broadcast service delivers short messages on various topics, such as weather, sports, or traffic.

Use this menu to change the settings for the service and to access broadcast messages.

- **Read:** open received messages.
The **Temporary** box saves network messages until the phone is switched off.
The **Archive** box saves network messages indefinitely. Press <**Options**> and select **Save** to save messages to the **Archive** box when a text notification appears.

- **Receive:** enable or disable the reception of broadcast messages.
- **Channel:** specify the channels from which you receive broadcast messages.
- **Language:** select the language in which broadcast messages display.

Please contact your service provider for details.

Memory status (Menu 5.7)

Use this menu to view the amount of memory currently in use in each folder.

File manager (Menu 6)

The **File manager** menu allows you to access images, videos, music files, sound files, and other files stored in the phone's memory.

To access this menu, press <**Menu**> in Idle mode and select **File manager**.

- According to the DRM (Digital Rights Management) system, web content may not be available to be forwarded.

Images (Menu 6.1)

This menu displays photos you have taken and images you have downloaded, received in messages, or imported from your computer.

Viewing an image

1. Select an image folder.
2. Select an image.

Using image options

While viewing an image, press <**Options**> to access the following options:

- **List:** return to the image list.
- **Send via:** send the file via MMS, e-mail, or Bluetooth.
- **Set as:** set the file as your wallpaper for the external or main display, or as a caller ID image for a Phonebook entry.
- **Edit:** decorate the photo by adding emoticons or applying a frame or special effect.

- **Delete:** delete the file.
- **Rename:** change the name of the file.
- **Move to favourite images:** move the file to **favourite images** folder.
- **Slide show:** set all images to display as a slide show.
- **Share for Bluetooth:** share the selected file or all files with other Bluetooth devices.
- **Print via Bluetooth:** print the file by connecting the phone to a printer via Bluetooth.
- **Protection:** protect the file from being deleted.
- **Properties:** access the file properties.

Videos (Menu 6.2)

This menu displays video clips you have recorded, downloaded, received in messages, or imported from your computer.



Video clips recorded on other devices, such as camcorders, may not play correctly.

Playing a video clip

1. Select a video folder.
2. Select a video clip.

Using video options

From the player screen, press to access the following options.

- **Play:** play the file.
- **Send via:** send the file via MMS, e-mail, or Bluetooth.
- **Delete:** delete the selected file.
- **Rename:** change the name of the file.
- **Move to favourite videos:** move the file to **favourite videos** folder.
- **Share for Bluetooth:** share the selected file with other Bluetooth devices.
- **Protection:** protect the file from being deleted.
- **Properties:** access the file properties.

Music (Menu 6.3)

This menu displays music files you have downloaded, received in messages, or imported from your computer.

Select a file. The MP3 player opens. ▶ p. 45

Sounds (Menu 6.4)

This menu displays voice memos you have recorded, and sound files you have downloaded, received in messages, or imported from your computer.

Playing a sound clip

1. Select a sound folder.
To access voice memos, scroll to the **Voice list** folder. ▶ p. 47
2. Select a sound clip.

During playback, you can use the following keys:

Keys	Function
OK/ <i>i</i>	Stops playback.

Keys	Function
Left	Goes to the previous file.
Right	Skips to the next file.
Up/Down/ ▲ / ▼	Adjusts the volume.

Using sound options

While playing a file, press <**Options**> to access options.

- **Play:** play the sound file.
- **Send via:** send the file via MMS, e-mail, or Bluetooth.
- **Set as:** set the file as your ringtone or as a caller alert melody, or alarm melody.
- **Delete:** delete the selected file or all files.
- **Rename:** change the name of the file.
- **Move to favourite sounds:** move the file to another folder.

- **Share for Bluetooth:** share the file with other Bluetooth devices.
- **Protection:** protect the e-mail from being deleted.
- **Properties:** access the file properties.

Other files *(Menu 6.5)*

Files that you have received but which are not supported by your phone are stored in this folder. You cannot open these files on the phone. Unsupported file formats include *.doc, *.ppt, and *.txt.

Memory status *(Menu 6.6)*

You can check the total amount of memory for media items and the amount of memory currently in use in each media box.

Calendar *(Menu 7)*

The Calendar feature enables you to keep track of your schedule and to-do items, and to view missed alarm events.

To access this menu, press <**Menu**> in Idle mode and select **Calendar**.

Consulting the calendar

When you enter the **Calendar** menu, the calendar in Month view appears with today's date indicated by a red box.

Selecting a day

- Press [Left] or [Right] to move by day.
- Press [Up] or [Down] to move by week.
- Press [▲/▼] to move by month.

Using calendar options

Press <**Options**> to access the following options:

- **View mode:** change the view mode of the calendar.
- **Create:** add a new event.
- **Go to:** go to the current date or a specific date.
- **Sort by:** sort items by type of event.

- **Delete:** delete events using various deleting options.
- **Missed alarm events:** view events whose alarms you have missed.
- **Memory status:** access the memory information for the event items stored on the calendar.

Creating an event

You can store scheduled events, anniversaries, and To-do items on the calendar. More than one event per day can be stored.

Entering a new scheduled event

1. Scroll to a date on the calendar.
2. Press <**Options**> and select **Create** → **Schedule** or **Miscellaneous**.
3. Enter information or change the settings:
 - **Subject:** enter a title for the event.
 - **Details:** enter event details.
 - **Start date** and **Start time:** enter the starting date and time for the event.

- **AM/PM:** select **AM** or **PM** in 12-hour time format.
 - **End date** and **End time:** enter the ending date and time for the event.
 - **AM/PM:** select **AM** or **PM** in 12-hour time format.
 - **Location:** (for **Schedule**) enter information about the event location.
 - **Alarm:** select to set an alarm for the event.
 - **before:** set how long before the event the alarm is to alert you.
 - **Alarm tone:** select an alarm tone.
 - **Repeat:** (for **Schedule**) select to set the event to recur.
 - **until:** (for **Schedule**) set the date to end repeating.
4. Press <**Save**> to save the event.

Entering a new anniversary

1. Scroll to a date on the calendar.
2. Press <**Options**> and select **Create** → **Anniversary**.

3. Enter information or change the settings:
 - **Occasion:** enter information about the anniversary.
 - **Date:** enter the date.
 - **Alarm:** select to set an alarm for the anniversary.
 - **before:** set how long before the event the alarm is to alert you.
 - **Alarm time:** set the time for the alarm.
 - **AM/PM:** select **AM** or **PM** in 12-hour time format.
 - **Alarm tone:** select an alarm tone.
 - **Repeat every year:** select to set the phone to remind you of the anniversary every year.
4. Press <**Save**> to save the event.





Entering a To-do item

1. Scroll to a date on the calendar.
2. Press <**Options**> and select **Create** → **To do**.
3. Enter information or change the settings:
 - **To do:** enter information about the task.
 - **Start date:** enter the starting date.

- **Due date:** enter the ending date.
 - **Priority:** select a priority level of the task.
4. Press <**Save**> to save the event.

Viewing an event

Once you have scheduled events, the event icons and the number of events for a specific day appears at the bottom of the calendar.

-  Scheduled event
-  Anniversary
-  To-do items
-  Miscellaneous

Accessing an event

1. Select a date on the calendar to display the events for the day.
2. Select an event to view its details.
3. Press [Left] or [Right] to access the other events scheduled for the selected day.

While viewing an event, press <**Options**> to access the following options:

- **Edit:** edit the event.

- **Create:** add a new event.
- **Send via:** send the event via SMS, MMS, e-mail, or Bluetooth.
- **View mode:** change the view mode of the calendar.
- **Done/Undone:** change the status of the selected to-do item.
- **Delete:** delete the event.
- **Print via Bluetooth:** print the selected event by connecting the phone to a printer via Bluetooth.

Viewing an event in a different mode




By default, the calendar appears in Month view mode. You can change the view mode to Day view or Week view.

Press <**Options**> and select **View mode** → a view mode.

Day view

You can view events for the selected date. Select an event to view its details.

The following icons will be displayed according to the event's type and status:

-  Alarm set
-  Recurring event
- Completed to-do item
-  To-do item priority; Red: high, Blue: normal, and Grey: low

Week view

You can view events for the selected week. A cell on the timetable indicates the presence of a schedule item. Select a cell that contains events.

Viewing a missed alarm event

When you are unable to acknowledge an alarm, the phone displays a missed alarm notification.

- Press **<View>** to view the corresponding event.
- Press **<Exit>**.

Accessing missed event alarm

1. Press **<Options>** and select **Missed alarm events**.

2. Select an event.

Using missed alarm options

From the event list, press **<Options>** to access the following options:

- **View**: display the event details.
- **Delete**: delete the event.
- **Delete all**: delete all events.

Camera *(Menu 8)*

You can use the camera module embedded in your phone to take photos and record videos.

To access this menu, press **<Menu>** in Idle mode and select **Camera**, or press and hold [Camera].

- Do not take photos of people without their permission.
- Do not take photos in a place where cameras are not allowed.
- Do not take photos in a place where you may interfere with another person's privacy.

Taking a photo

You can take photos in various modes. The camera produces JPEG photos.

- ✓ When you take a photo in direct sunlight or in bright conditions, shadows may appear on the photo.

Taking a photo with the phone open

1. If necessary, remove the camera cover.
2. Access the **Camera** menu or press and hold [Camera] to turn on the camera.
The image to be captured appears on the display.
3. Aim the camera lens at the subject.
 - Press <👉> to access camera options. See the next section.
 - Use the keypad to change camera settings or switch to other modes. ▶ p. 80
4. Press [OK/👉] to take a photo. The photo is saved in the **Photos** folder.

To	Press
use photo options	<Options>. ▶ p. 80
scroll through the image	[Left] or [Right]
delete the photo	<Delete> and then <Yes>.
return to Capture mode	[OK/👉].

Using camera options in Capture mode

In Capture mode, press <👉> to access the following options:

- **Record video:** switch to Record mode.
- **Shooting mode:** take a photo in the following modes:
 - Single shot:** take a photo in the normal mode. You can select whether or not the camera automatically saves a photo.
 - Multi shot:** take a series of action stills. You can select the number of photos the camera will take and the shutter speed.

Mosaic shot: take several stills and save them in one frame. You can select the layout.

- **Effects:** change the colour tone or apply a special effect.
- **Frames:** apply a decorative frame.
- **Flash:** determine the use of the flash.
- **Timer:** set a time delay before the camera takes a photo.
- **Go to photos:** go to the **Photos** folder.
- **Settings:** change the default settings for taking a photo.

Size: select an image size.

Quality: select an image quality setting.

View finder: select a preview mode, either Full screen mode or Standard ratio mode with actual ratio.

ISO: change the ISO setting, which controls the sensitivity of your camera. For low light situations, lower the ISO number to increase image quality. The higher the ISO number, the faster the camera shutter functions and the more sensitive the

camera is to light. Higher ISO settings may bring some distortion to an image.

Spot focus: adjust the exposure based on a specific area of the image. Select **On** to display the spot focus frame in the middle of the image, and change the exposure according to the brightness of the image fragment in the frame.

Shutter sound: select the sound that you hear when you press the shutter release, [Camera] or [OK/⏏].

Zoom sound: turn the sound effect for zooming on or off.

Brightness sound: turn the sound effect for brightness adjustment on or off.

Default name: change the default prefix of the photo name.

- **Camera short cuts:** view the functions of the keys you can use in Capture mode.

Using the keypad in Capture mode

You can use the keypad to customise your camera settings in Capture mode.

Keys	Function
▲	Flips the image vertically.
▼	Shows the mirror image.
Left/Right	Adjusts the image brightness.
Up/Down	Zooms in or out.
1	Switches to Record mode. ► p. 81
2	Changes the image size.
3	Changes the image quality.
4	Changes the shooting mode and the number of photos.
5	Changes the colour tone or applies a special effect.
6	Reduces the distortion on the image to maximise detail and sharpness.

Keys	Function
7	Selects a decorative frame.
8	Sets the timer.
9	Goes to the Photos folder. ► p. 71
0	Determines the use of the flash.
*	Changes the preview screen.

Using photo options

After taking a photo, press <**Options**> to access the following options:

- **Take another:** return to Capture mode.
- **Send via:** send the file via MMS, e-mail, or Bluetooth.
- **Set as:** set the file as your wallpaper for the external or main display, or as a caller ID image for a Phonebook entry.
- **Delete:** delete the file.
- **Rename:** change the name of the file.
- **Go to photos:** go to the **Photos** folder.

- **Share for Bluetooth:** share the selected file or all files with other Bluetooth devices.
- **Print via Bluetooth:** print the selected file by connecting the phone to a printer via Bluetooth.
- **Protection:** protect the file from being deleted.
- **Properties:** access the file properties.

Taking a photo with the phone closed

1. Press and hold [Camera].
2. Aim the camera lens at the subject.
 - Press [▲] to flip the image vertically.
 - Press [▼] to view the mirror image.
3. Press [Camera] to take a photo. The photo is automatically saved in the **Photos** folder.

Recording a video

You can record a video of what is displayed on the camera screen and save it.

1. In Capture mode, press [1].
2. Aim the camera lens at the subject.

- Press <📷> to access camera options. See the next section.
 - Use the keypad to change camera settings or switch to other modes. ▶ p. 82
3. Press [OK/⏏] to start recording.
 4. Press [OK/⏏] to stop recording. The video is automatically saved in the **Videos** folder.

To	Press
play back the video clip	[OK/⏏].
use video options	<📷>. ▶ p. 83
delete the video clip	[C] and then <Yes>.
return to Record mode	the right soft key.

Using camera options in Record mode

In Record mode, press <📷> to access the following options:

- **Take a photo:** switch to Capture mode.
- **Effects:** change the colour tone or apply a special effect.

- **Flash:** determine the use of the flash.
- **Timer:** set a time delay before the camera starts recording.
- **Go to videos:** go to the **Videos** folder.
- **Settings:** change the settings for recording a video:

Recording mode: select a video recording mode.

Select **Normal** to record a video within the limit of the currently available memory.

Select **Limit for MMS** to record a video suitable for an MMS message.

Size: select a frame size.

Quality: select an image quality.

Audio rec.: turn on or off the audio.

Zoom sound: turn the sound effect for zooming on or off.

Brightness sound: turn the sound effect for brightness adjustment on or off.

Default name: change the default prefix of the video clip name.

- **Camcorder short cuts:** view the functions of the keys you can use in Record mode.


Using the keypad in Record mode

You can use the keypad to customise your camera settings in Record mode:

Keys	Function
▲	Flips the image vertically.
▼	Shows the mirror image.
Left/Right	Adjusts the image brightness.
Up/Down	Zooms in or out.
1	Switches to Capture mode. ▶ p. 78
2	Changes the frame size.
3	Changes the image quality.
4	Changes the video recording mode.
5	Changes the colour tone or applies a special effect.

Keys	Function
6	Reduces the distortion on the image to maximise detail and sharpness.
7	Turn on or off the audio.
8	Sets the timer.
9	Goes to the Videos folder. ► p. 71
0	Determines the use of the flash.

Using video options

After recording a video clip, press < > to access the following options:

- **Record another:** return to Record mode.
- **Send via:** send the file via MMS, e-mail, or Bluetooth.
- **Delete:** delete the file.
- **Rename:** change the name of the file.
- **Go to videos:** go to the **Videos** folder.
- **Share for Bluetooth:** share the selected file with other Bluetooth devices.

- **Protection:** protect the file from being deleted.
- **Properties:** access the file properties.

Recording a video with the phone closed

1. Press and hold [Camera].
2. Press [Motion].
3. Aim the camera lens at the subject.
 - Press [▲] to flip the image vertically.
 - Press [▼] to view the mirror image.
4. Press [Camera] to start recording.
5. Press [Camera] to stop recording. The video clip is automatically saved.

Settings *(Menu 9)*

The Settings menu provides you with various setting options to customise the phone to your preferences and needs. You can also reset the settings to their default values.

To access this menu, press <**Menu**> in Idle mode and select **Settings**.

Time & Date (Menu 9.1)

Use this menu to change the time and date displayed on your phone. Before settings the time and date, specify your time zone in the **World time** menu.

▶ p. 51

- **Set time:** enter the current time.
- **AM/PM:** select **AM** or **PM** in 12-hour time format.
- **Time format:** select the time format.
- **Set date:** enter the current date.
- **Date format:** select the date format.

Phone settings (Menu 9.2)

Many different features of your phone's system can be customised to suit your preferences.

Language (Menu 9.2.1)

Use this menu to select one of several languages for the display text or change your pinyin input settings.

- **Display:** select a language for the display.
- **Mohu pinyin:** select the pinyin input settings.

Greeting message (Menu 9.2.2)

Use this menu to enter the greeting that is displayed briefly when the phone is switched on.

Short cut (Menu 9.2.3)

You can use the Navigation keys as shortcut keys to access specific menus directly from Idle mode. Use this menu to assign a shortcut menu to a key.

Assigning a menu to a key

1. Select a key to be used as a shortcut key.
2. Select the menu to be assigned to the key.

Using shortcut options

Press <**Options**> to access the following options:

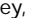

- **Change:** assign or change a shortcut menu.
- **Remove:** deactivate the shortcut assignment.
- **Remove all:** deactivate all shortcut assignments.

Volume key (Menu 9.2.4)

Use this menu to set whether the phone mutes the call ringer or rejects a call if you press and hold [**▲/▼**] when a call comes in.

Extra settings *(Menu 9.2.5)*

You can turn the automatic redialling or answering feature on or off.

- **Auto redial:** set the phone to make up to ten attempts to redial a phone number after an unsuccessful call.
- **Anykey answer:** answer an incoming call by pressing any key, except [, <Reject>, and [].
- **Voice clarity:** increase the microphone's sensitivity to allow the other person on the phone to hear your voice clearly, even though you may be whispering.
- **Active folder:** answer an incoming call by opening the phone.

Display settings *(Menu 9.3)*

Use this menu to change settings for the display and light.

Wallpaper *(Menu 9.3.1)*

You can set up the idle screen on both displays.

- **Main display:** select an image to be displayed on the main display.
- **Cover display:** select an image or enter text to be displayed on the external display.

Text display *(Menu 9.3.2)*

You can customise the text appearance for the idle screen.

- **Text position:** select a text position on the display. If you don't want to display text in Idle mode, select **Off**.
- **Text style:** select a text style.
- **Text colour:** select a text colour.

Calendar *(Menu 9.3.3)*

Use this menu to display the calendar of the current month on the idle screen.

Skin *(Menu 9.3.4)*

You can select a skin colour for Menu mode.

LCD brightness *(Menu 9.3.5)*

You can adjust the brightness of the display for varying lighting conditions.

Backlight (Menu 9.3.6)

You can select the length of time the backlight stays on or the length of time the display stays on in Dim mode, in which the backlight is off.

- **Main LCD on:** select the length of time the backlight stays on.
- **Main LCD dim:** select the length of time the display stays on in Dim mode after the backlight turns off. After a specified time, the display turns off.

Dialing font colour (Menu 9.3.7)

Use this menu to select a font colour for the numbers entered while dialling.

Show caller information (Menu 9.3.8)

Use this menu to set the phone to display missed call notifications with the most recently missed caller's information. To set the external display to show caller information, select **With cover display**.

Service light (Menu 9.3.9)

Use this menu to activate the service light feature and select the colour of the service light.

Sound settings (Menu 9.4)

Use this menu to customise various sound settings.

Incoming call (Menu 9.4.1)

Use this menu to select a volume and alert type for incoming calls.

- **Ring tone:** select a ringtone for the call ringer.
- **Volume:** select a ringer volume.
- **Alert type:** specify how you are to be informed of incoming calls.

Keypad tone (Menu 9.4.2)

Use this menu to select the tone that the phone sounds when you press a key.



You can adjust the keypad tone volume using [▲/▼] in Idle mode.

Message tone *(Menu 9.4.3)*

Use this menu to set up the ringer for incoming messages and e-mails.

- **Tone:** select one of several message tones.
- **Alert type:** specify how you are to be informed when a message comes in.
- **Repetition:** specify how often the phone informs you of a new message.

Power on/off *(Menu 9.4.4)*

Use this menu to select the melody that the phone sounds when it is switched on or off.

Folder tone *(Menu 9.4.5)*

Use this menu to select the tone that the phone sounds when you open or close the phone.

On-time alarm *(Menu 9.4.6)*

Use this menu to set your phone to sound and alert every hour on the hour.

Quiet mode *(Menu 9.4.7)*

Use this menu to set how the phone acts to alert you to a specific event while in Quiet mode.

Extra tones *(Menu 9.4.8)*

Use this menu to customise additional tones for the phone.

- **Minute minder:** set the phone to beep every minute during an outgoing call to keep you informed of the length of your call.
- **Connection tone:** set the phone to beep when it is connected to the system.
- **Alerts on call:** set the phone to beep when you receive a new message or when the time for an alarm comes during a call.
- **Indicative tones:** set the phone to beep when a pop-up window appears to indicate that your phone has completed an operation or that an error occurs.

Network services *(Menu 9.5)*

Use this menu to access network services. Please contact your service provider to check their availability and subscribe to them, if you wish.

Call diverting (Menu 9.5.1)

This network service reroutes incoming calls to a phone number that you specify.

1. Select a call diverting option:
 - **Divert always:** divert all calls.
 - **Busy:** divert calls when you are on another call.
 - **No reply:** divert calls when you do not answer the phone.
 - **Unreachable:** divert calls when you are not in an area covered by the network or when your phone is switched off.
 - **Cancel all:** cancel all call diverting options.
2. Select the type of calls to be diverted.
3. Select **Activate**. To deactivate call diverting, select **Deactivate**.
4. Move to the **Divert to** line.
5. Enter the number to which calls are to be diverted and press **<Select>**.

6. If you selected **No reply**, move to the **Sec** line and select the length of time the network delays before diverting a call.

Call barring (Menu 9.5.2)

This network service allows you to restrict your calls.

1. Select a call barring option:
 - **All outgoing:** prohibit all outgoing calls.
 - **International:** prohibit international calls.
 - **International except to home:** only allow calls to numbers within the current country.
 - **All incoming:** prohibit incoming calls.
 - **Incoming while abroad:** prohibit incoming calls when you use your phone outside of your home country.
 - **Cancel all:** cancel all call barring settings, allowing calls to be sent and received normally.
 - **Change barring password:** change the call barring password.
2. Select the type of calls to be barred.
3. Select **Activate**. To deactivate call barring, select **Deactivate**.

4. Enter the call barring password and press **<Select>**.

Call waiting (Menu 9.5.3)

This network service informs you when someone is trying to reach you while you are on another call.

1. Select the type of calls to which the call waiting option will apply.
2. Select **Activate**. To deactivate call waiting, select **Deactivate**.

Network selection (Menu 9.5.4)

This network service allows you to either automatically or manually select the network to be used while roaming outside of your home area.

You can select a network other than your home network only if there is a valid roaming agreement between the two.

Caller ID (Menu 9.5.5)

This network service allows you to prevent your phone number from being displayed on the phone of the

person being called. However, some networks do not allow the user to change this setting.

If you select **Default**, the phone will use the default setting provided by the network.

Voice mail server (Menu 9.5.6)

Use this menu to store the number of the voice mail server and access your voice mails.

- Your service provider can give you the voice mail server number.

- **Connect to voice mail:** connect to the voice mail server to allow you to listen to your messages.
- **Voice server number:** edit the name and number for the voice mail server.

Band selection (Menu 9.5.7)

For the phone to make and receive phone calls, it must register with an available network. Your phone can handle any of the following types of networks: Combined GSM 900/1800, GSM 1900, and Tri band (GSM 900/1800/1900).

The country where you purchased your phone determines the default band that it uses. When you travel abroad, you may need to change to an appropriate band.

Bluetooth (Menu 9.6)

Using the Bluetooth feature, you can connect the phone wirelessly to other Bluetooth devices and exchange data with them, talk hands-free, or control the phone remotely.

Bluetooth technology allows free wireless connections between all Bluetooth-compliant devices within a range of 10 meters. Since the devices communicate using radio waves, they do not need to be in line of sight to each other.

- If there are obstacles between the devices, the operating distance may be reduced.
- It is recommended that you don't use the Bluetooth feature while using multimedia features, such as voice recorder, camera, and MP3 player, or vice versa, for better performance.
- Some devices may not be compatible with your phone.

Setting up the Bluetooth feature








The **Bluetooth** menu provides the following options:

- **Activation:** activate or deactivate the Bluetooth feature.
- **My devices:** search for connectable Bluetooth devices. See the next section.
- **My phone's visibility:** allow other Bluetooth devices to search for your phone.
- **My phone's name:** assign a Bluetooth device name to your phone, which is then displayed on other devices.
- **Secure mode:** determine if the phone asks for your confirmation when other devices access your data.
- **Bluetooth services:** display available Bluetooth services.

Searching for and pairing with a Bluetooth device

1. From the Bluetooth setting options, select **My devices**.
2. Select **Search new device**.

After searching, a list of devices to which you can connect displays. The following icons indicate the kind of device:

-  A/V headset
-  Computer
-  Printer
-  Hands-free car kit or headset
-  Mobile phone
-  PDA
-  Unknown device

The colour of the icon indicates the status of the the device:

- Grey for unpaired devices
 - Blue for paired devices
 - Red for devices that are currently connected to your phone
3. Select a device.
 4. Enter a Bluetooth PIN code and press **<OK>**. This code is used just once and you don't need to memorise it.

When the owner of the other device enters the same code, pairing is complete.

- ☑ Some devices, especially headsets or hands-free car kits, may have a fixed Bluetooth PIN, such as **0000**. If the other device has a code, you must enter it.

Using device options

From the device list, press **<Options>** to access the following options:

- **Connect/Disconnect:** connect to the currently selected device, or end the connection.
- **Browse files:** search for data from the device and import data directly to your phone.
- **Service list:** display available Bluetooth services for the selected device.
- **Rename:** rename the paired device.
- **Authorize device/Unauthorize device:** determine whether or not the phone asks you to permit connection when the device tries to connect to your phone.
- **Delete:** remove the selected device or all displayed devices from the device list.

Sending data via Bluetooth

1. Activate the Bluetooth feature.
2. Select the application in which the item you want to send is stored.
3. Scroll to the item you want and press **<Options>**.
4. Select **Send via** → **Bluetooth**.
The phone searches for devices within range and displays a list of available devices.
5. Select a device.
6. If necessary, enter the Bluetooth PIN needed for pairing and press **<OK>**.

Receiving data via Bluetooth

To receive data via Bluetooth, your phone's Bluetooth feature must be active.

If an unauthorised Bluetooth device sends data to your phone, the phone displays a confirmation message. To receive data, press **<Yes>**.

Security *(Menu 9.7)*

Use this menu to protect the phone against unauthorised use by managing the several access codes of your phone and SIM card.

- If you enter an incorrect PIN/PIN2 three times in succession, the SIM card is blocked. To unblock it, you need to enter your PUK/PUK2 (Personal Unblocking Key). The codes are supplied by your network operator.

PIN check *(Menu 9.7.1)*

The 4- to 8-digit PIN (Personal Identification Number) protects your SIM card against unauthorised use. When this feature is enabled, the phone requires your PIN each time it is switched on.

Change PIN *(Menu 9.7.2)*

Use this menu to change your PIN. The PIN check feature must be enabled to use this feature.

Phone lock *(Menu 9.7.3)*

This feature locks the phone from unauthorised use.

When this feature is enabled, you must enter a 4- to 8-digit phone password each time the phone is switched on.

The password is preset to **00000000**. To change the password, use the **Change password** menu.

Change password (Menu 9.7.4)

Use this menu to change your phone password.

Privacy (Menu 9.7.5)

Use this menu to lock your media contents, including messages, images, videos, music files, and sounds.

1. Press [OK/↵] to check the items to lock.
2. Press <Save> to lock the marked items.
3. Enter the phone password and press <OK>.

To access a locked item, you need to enter the phone password.

SIM lock (Menu 9.7.6)

The SIM lock feature allows your phone to work only with the current SIM by assigning a SIM lock code. You must enter the SIM lock code to use a different SIM card.

FDN mode (Menu 9.7.7)

If supported by your SIM card, Fixed Dialling Number (FDN) mode restricts your outgoing calls to a limited set of phone numbers. When this feature is enabled, you can make calls only to phone numbers specified in the FDN list. ▶ p. 41

Change PIN2 (Menu 9.7.8)

If supported by your SIM card, the change PIN2 feature changes your current PIN2.

Memory status (Menu 9.8)

Use this menu to check the amount of memory being used for storing data in **Messages**, **File manager**, **Calendar**, **Phonebook**, and **JAVA world**. You can also check **Shared memory** for MMS, Email, and File manager.

Reset settings (Menu 9.9)

Use this menu to reset the phone settings, display settings, and sound settings individually. You can also reset all of the settings in your phone at the same time.

1. Press [OK/↵] to check the setting categories to be reset.
2. Press <Reset> to reset the marked items.
3. Press <Yes> to confirm the reset.
4. Enter the phone password and press <OK>.

The password is preset to **00000000**. To change the password, use the **Change password** menu. ▶ p. 93

Solve problems

Help and personal needs

To save the time and expense of an unnecessary service call, perform the simple checks in this section before contacting a service professional.

When you switch on your phone, the following messages may appear:

"Insert SIM"

- Be sure that the SIM card is correctly installed.

"Phone lock"

- The automatic locking function has been enabled. You must enter the phone's password before you can use the phone.

"Enter PIN"

- You are using your phone for the first time. You must enter the PIN supplied with the SIM card.
- The PIN check feature is enabled. Every time the phone is switched on, the PIN has to be entered. To disable this feature, use the **PIN check** menu.


“Enter PUK”

- The PIN code has been entered incorrectly three times in succession, and the phone is now blocked. Enter the PUK supplied by your service provider.


“No service,” “Network failure,” or “Not done” displays

- The network connection has been lost. You may be in a weak signal area. Move and try again.
- You are trying to access an option for which you have no subscription with your service provider. Contact the service provider for further details.

You have entered a number but it was not dialed

- Be sure that you have pressed [].
- Be sure that you have accessed the right cellular network.
- Be sure that you have not set an outgoing call barring option.

Your correspondent cannot reach you

- Be sure that your phone is switched on. ([] pressed for more than one second.)
- Be sure that you are accessing the correct cellular network.

- Be sure that you have not set an incoming call barring option.




Your correspondent cannot hear you speaking

- Be sure that you have switched on the microphone.
- Be sure that you are holding the phone close enough to your mouth. The microphone is located at the bottom of the phone.

The phone starts beeping and “Battery low” flashes on the display

- Your battery is insufficiently charged. Recharge the battery.

The audio quality of the call is poor

- Check the signal strength indicator on the display (). The number of bars indicates the signal strength from strong () to weak ().
- Try moving the phone slightly or moving closer to a window if you are in a building.

No number is dialed when you re-call a Phonebook entry

- Use the Contact list feature to ensure the number has been stored correctly.
- Re-store the number, if necessary.

The battery doesn't charge properly or the phone sometimes turns itself off

- Wipe the charging contacts both on the phone and on the battery with a clean soft cloth.

If the above guidelines do not help you to solve the problem, take note of:

- The model and serial numbers of your phone
- Your warranty details
- A clear description of the problem

Then contact your local dealer or Samsung after-sales service.

Health and safety information

SAR certification information

This phone meets European Union (EU) requirements concerning exposure to radio waves.

Your mobile phone is a radio transmitter and receiver. It is designed and manufactured to not exceed the limits for exposure to radio-frequency (RF) energy, as recommended by the EU Council. These limits are part of comprehensive guidelines and establish permitted levels of RF energy for the general population. The guidelines were developed by independent scientific organisations through the periodic and thorough evaluation of scientific studies. The limits include a substantial safety margin designed to ensure the safety of all persons, regardless of age and health.

The exposure standard for mobile phones employs a unit of measurement known as Specific Absorption Rate (SAR). The SAR limit recommended by the EU Council is 2.0W/kg.*

SAR tests are conducted using standard operating positions with the phone transmitting at its highest certified power level in all tested frequency bands. Although the SAR is determined at the highest certified power level, the actual SAR level of the phone while operating can be well below the maximum value. This is because the phone is designed to operate at multiple power levels so as to use only the power required to reach the network. In general, the closer you are to a base station, the lower the power output of the phone.

Before a new model phone is available for sale to the public, compliance with the European R&TTE Directive must be shown. This directive includes as one of its essential requirements the protection of the health and safety of the user and any other person.

* The SAR limit for mobile phones used by the public is 2.0 watts/kilogram (W/kg) averaged over ten grams of body tissue. The limit incorporates a substantial margin of safety to give additional protection for the public and to account for any variations in measurements. The SAR values may vary, depending on national reporting requirements and the network band.

Precautions when using batteries

- Never use a charger or battery that is damaged in any way.
- Use the battery only for its intended purpose.
- If you use the phone near the network's base station, it uses less power. Talk and standby time are greatly affected by the signal strength on the cellular network and the parameters set by the network operator.
- Battery charging time depends on the remaining battery charge, the type of battery, and the charger used. The battery can be charged and discharged hundreds of times, but it will gradually wear out. When the operation time is noticeably shorter than normal, it is time to buy a new battery.
- If left unused, a fully charged battery will discharge itself over time.
- Use only Samsung-approved batteries, and recharge your battery only with Samsung-approved chargers. Disconnect the charger from the power source when it is not in use. Do not leave the battery connected to a charger for more than a week, since overcharging may shorten its life.

- Extreme temperatures will affect the charging capacity of your battery: it may require cooling or warming first.
- Do not leave the battery in hot or cold places because the capacity and lifetime of the battery will be reduced. Try to keep the battery at room temperature. A phone with a hot or cold battery may not work temporarily, even when the battery is fully charged. Li-ion batteries are particularly affected by temperatures below 0°C (32°F).
- Do not short-circuit the battery. Accidental short-circuiting can occur when a metallic object like a coin, clip or pen causes a direct connection between the + and – terminals of the battery (metal strips on the battery). For example, do not carry a spare battery in a pocket or bag where the battery may contact metal objects. Short-circuiting the terminals may damage the battery or the object causing the short-circuiting.
- Dispose of used batteries in accordance with local regulations. Always recycle. Do not dispose of batteries in a fire.

Road safety

Your wireless phone gives you the powerful ability to communicate by voice, almost anywhere, anytime. But an important responsibility accompanies the benefits of wireless phones, one that every user must uphold.

When you are driving a car, driving is your first responsibility. When using your wireless phone while driving, follow local regulations in the country or region you are in.

Operating environment

Remember to follow any special regulations in force in the area you are in, and always switch off your phone whenever it is forbidden to use it, or when it may cause interference or danger.

When connecting the phone or any accessory to another device, read its user's guide for detailed safety instructions. Do not connect incompatible products.

As with other mobile radio transmitting equipment, users are advised that for the satisfactory operation of the equipment and for the safety of personnel, it is recommended that the equipment should only be used in

the normal operating position (held to your ear with the antenna pointing over your shoulder).

Electronic devices

Most modern electronic equipment is shielded from radio frequency (RF) signals. However, certain electronic equipment may not be shielded against the RF signals from your wireless phone. Consult the manufacturer to discuss alternatives.

Pacemakers

Pacemaker manufacturers recommend that a minimum distance of 15 cm (6 inches) be maintained between a wireless phone and a pacemaker to avoid potential interference with the pacemaker. These recommendations are consistent with the independent research and recommendations of Wireless Technology Research. If you have any reason to suspect that interference is taking place, switch off your phone immediately.

Hearing aids

Some digital wireless phones may interfere with some hearing aids. In the event of such interference, you may

wish to consult your hearing aid manufacturer to discuss alternatives.

Other medical devices

If you use any other personal medical devices, consult the manufacturer of your device to determine if it is adequately shielded from external RF energy.

Your physician may be able to assist you in obtaining this information.

Switch off your phone in health care facilities when regulations posted in these areas instruct you to do so.

Vehicles

RF signals may affect improperly installed or inadequately shielded electronic systems in motor vehicles. Check with the manufacturer or its representative regarding your vehicle.

You should also consult the manufacturer of any equipment that has been added to your vehicle.

Posted facilities

Switch off your phone in any facility where posted notices require you to do so.

Potentially explosive environments

Switch off your phone when in any area with a potentially explosive atmosphere, and obey all signs and instructions. Sparks in such areas could cause an explosion or fire resulting in bodily injury or even death.

Users are advised to switch off the phone while at a refuelling point (service station). Users are reminded of the need to observe restrictions on the use of radio equipment in fuel depots (fuel storage and distribution areas), chemical plants, or where blasting operations are in progress.


Areas with a potentially explosive atmosphere are often but not always clearly marked. They include the areas below decks on boats, chemical transfer or storage facilities, vehicles using liquefied petroleum gas, such as propane or butane, areas where the air contains chemicals or particles, such as grain, dust or metal powders, and any other area where you would normally be advised to turn off your vehicle engine.

Emergency calls

This phone, like any wireless phone, operates using radio signals, wireless, and landline networks as well as user-programmed functions, which cannot guarantee connection in all conditions. Therefore, you should never rely solely on any wireless phone for essential communications like medical emergencies.

To make or receive calls, the phone must be switched on and in a service area with adequate signal strength. Emergency calls may not be possible on all wireless phone networks or when certain network services and/or phone features are in use. Check with local service providers.

To make an emergency call:

1. Switch on the phone.
2. Key in the emergency number for your present location. Emergency numbers vary by location.
3. Press [].

Certain features like Call Barring may need to be deactivated before you can make an emergency call. Consult this document and your local cellular service provider.

Other important safety information

- Only qualified personnel should service the phone or install the phone in a vehicle. Faulty installation or service may be dangerous and may invalidate any warranty applicable to the device.
- Check regularly that all wireless phone equipment in your vehicle is mounted and operating properly.
- Do not store or carry flammable liquids, gases, or explosive materials in the same compartment as the phone, its parts, or accessories.
- For vehicles equipped with an air bag, remember that an air bag inflates with great force. Do not place objects, including installed or portable wireless equipment, in the area over the air bag or in the air bag deployment area. Improperly installed wireless equipment could result in serious injury if the air bag inflates.
- Switch off your phone before boarding an aircraft. It is dangerous and illegal to use wireless phones in an aircraft because they can interfere with the operation of the aircraft.

- Failure to observe these instructions may lead to the suspension or denial of telephone services to the offender, or legal action, or both.

Care and maintenance

Your phone is a product of superior design and craftsmanship and should be treated with care. The suggestions below will help you fulfill any warranty obligations and allow you to enjoy this product for many years.

- Keep your phone and all its parts and accessories out of the reach of small children and pets. They may inadvertently damage these things or choke on small parts.
- Keep the phone dry. Precipitation, humidity, and liquids contain minerals that corrode electronic circuits.
- Do not use the phone with a wet hand. Doing so may cause an electric shock to you or damage to the phone.
- Do not use or store the phone in dusty, dirty areas, as its moving parts may be damaged.

Health and safety information

- Do not store the phone in hot areas. High temperatures can shorten the life of electronic devices, damage batteries, and warp or melt certain plastics.
- Do not store the phone in cold areas. When the phone warms up to its normal operating temperature, moisture can form inside the phone, which may damage the phone's electronic circuit boards.
- Do not drop, knock, or shake the phone. Rough handling can break internal circuit boards.
- Do not use harsh chemicals, cleaning solvents, or strong detergents to clean the phone. Wipe it with a soft cloth slightly dampened in a mild soap-and-water solution.
- Do not paint the phone. Paint can clog the device's moving parts and prevent proper operation.
- Do not put the phone in or on heating devices, such as a microwave oven, stove, or radiator. The phone may explode when overheated.
- When the phone or battery gets wet, the label indicating water damage inside the phone changes colour. In this case, phone repairs are no longer guaranteed by the manufacturer's warranty, even if the warranty for your phone has not expired.
- If your phone has a flash or light, do not use it too close to the eyes of people or animals. This may cause damage to their eyes.
- Use only the supplied or an approved replacement antenna. Unauthorised antennas or modified accessories may damage the phone and violate regulations governing radio devices.
- If the phone, battery, charger, or any accessory is not working properly, take it to your nearest qualified service facility. The personnel there will assist you, and if necessary, arrange for service.