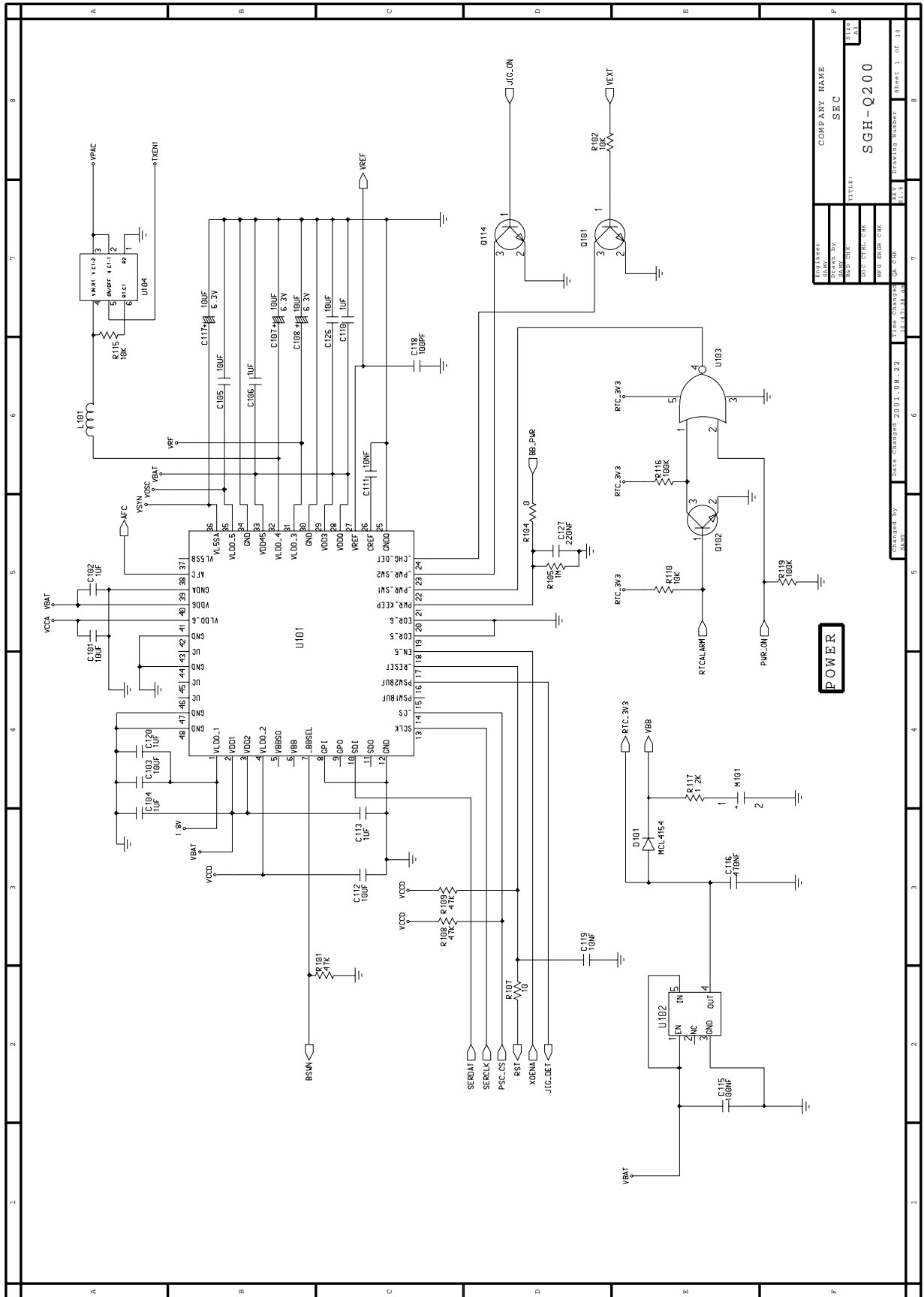






# 5-15. Power Circuit Diagram



REVISED BY	DATE CHANGED	REVISED NUMBER
SEC	2003.08.22	1.5
DRAWN BY		
CHECKED BY		
DATE		
TITLE		
SGH-Q200		
COMPANY NAME		
SEC		

REVISED BY	DATE CHANGED	REVISED NUMBER
SEC	2003.08.22	1.5
DRAWN BY		
CHECKED BY		
DATE		
TITLE		
SGH-Q200		
COMPANY NAME		
SEC		

REVISED BY	DATE CHANGED	REVISED NUMBER
SEC	2003.08.22	1.5
DRAWN BY		
CHECKED BY		
DATE		
TITLE		
SGH-Q200		
COMPANY NAME		
SEC		

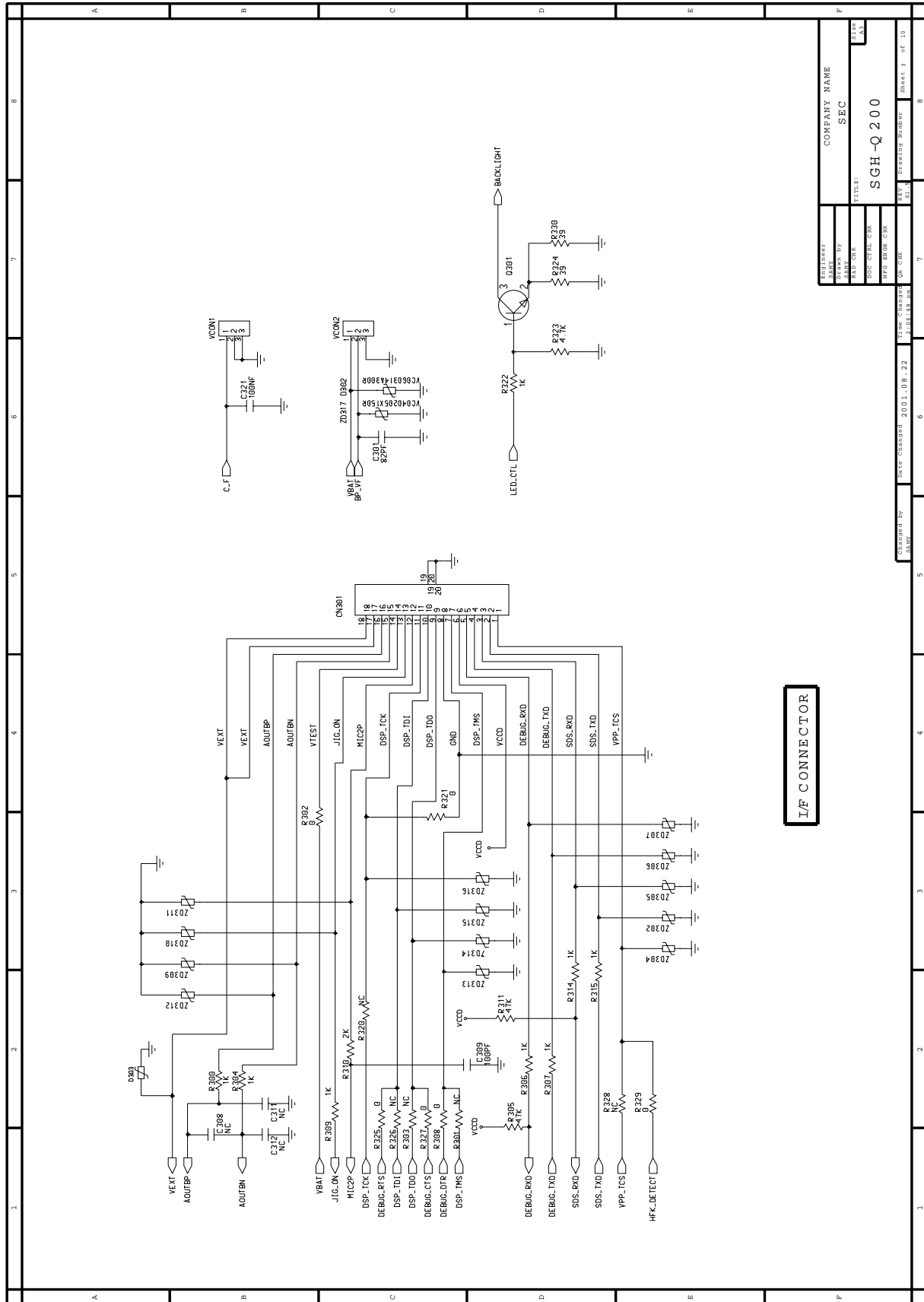
REVISED BY	DATE CHANGED	REVISED NUMBER
SEC	2003.08.22	1.5
DRAWN BY		
CHECKED BY		
DATE		
TITLE		
SGH-Q200		
COMPANY NAME		
SEC		

REVISED BY	DATE CHANGED	REVISED NUMBER
SEC	2003.08.22	1.5
DRAWN BY		
CHECKED BY		
DATE		
TITLE		
SGH-Q200		
COMPANY NAME		
SEC		

REVISED BY	DATE CHANGED	REVISED NUMBER
SEC	2003.08.22	1.5
DRAWN BY		
CHECKED BY		
DATE		
TITLE		
SGH-Q200		
COMPANY NAME		
SEC		



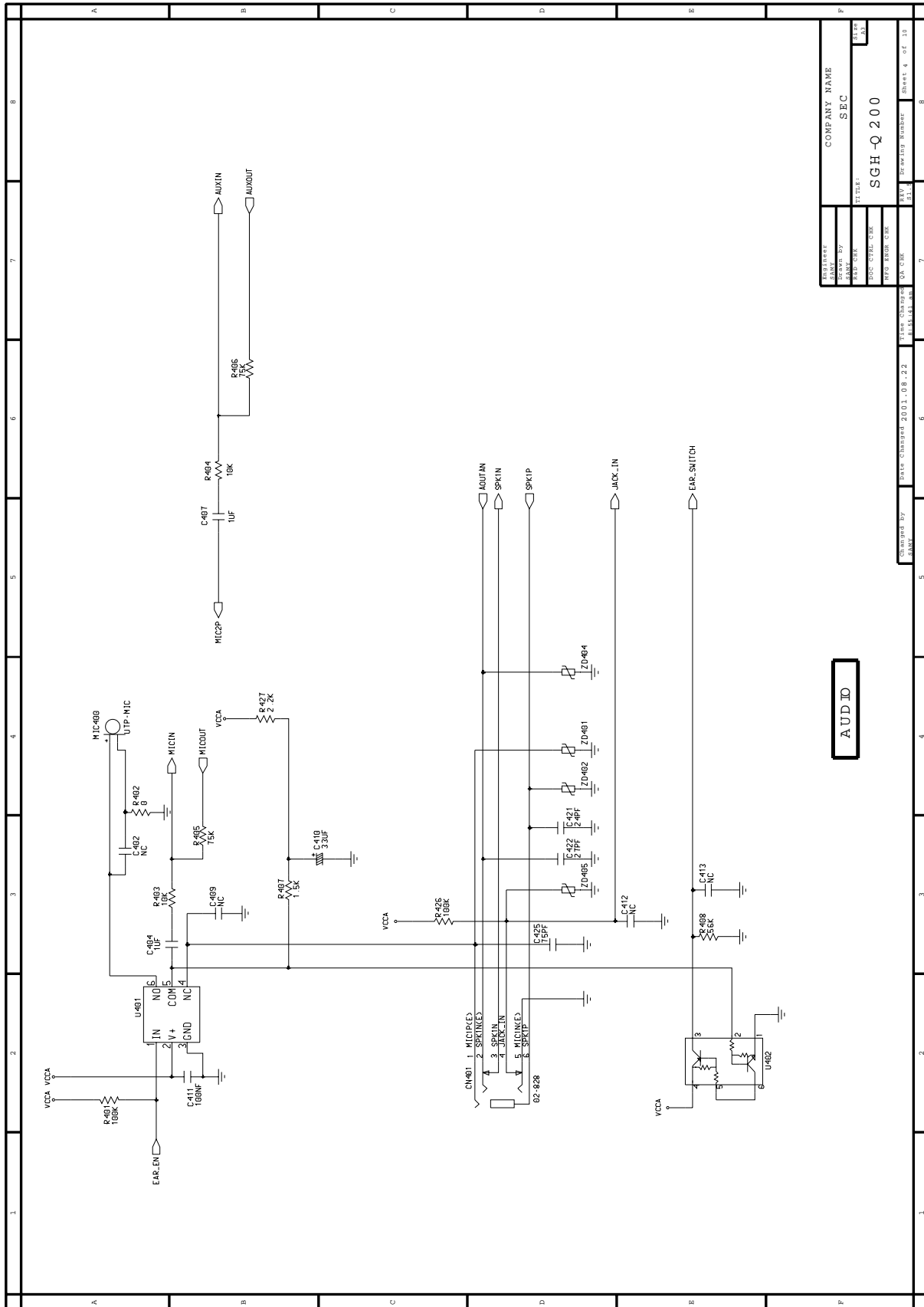
# 5-17. I/F Connector Circuit Diagram



I/F CONNECTOR

EQUIPMENT	SGH-Q200
DRAWN BY	SEC
CHECKED	SEC
DOC. CTRL. CHK	SEC
REF. ERROR CHK	SEC
FILE NAME	SGH-Q200
REV.	1.0
DATE	2001.08.22
DESIGN NUMBER	3-18548-00
REV. NUMBER	1.0
DATE	2001.08.22

# 5-18. Audio Circuit Diagram



COMPANY NAME	SEC
TITLE	SGH-Q 200
DESIGNED BY	
CHECKED BY	
DATE	
REV	
REVISED NUMBER	
SHEET # OF 13	

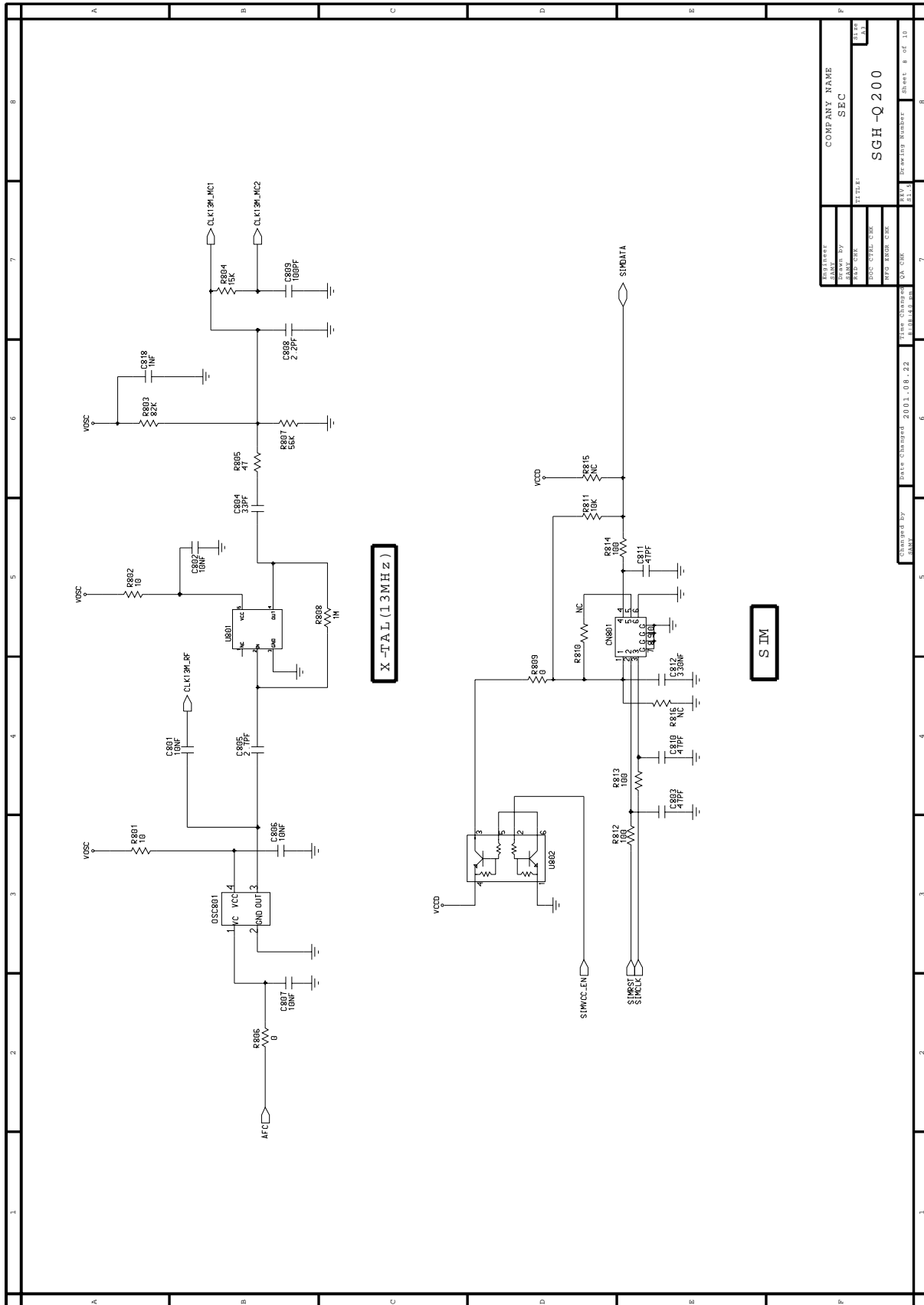
AUDIO



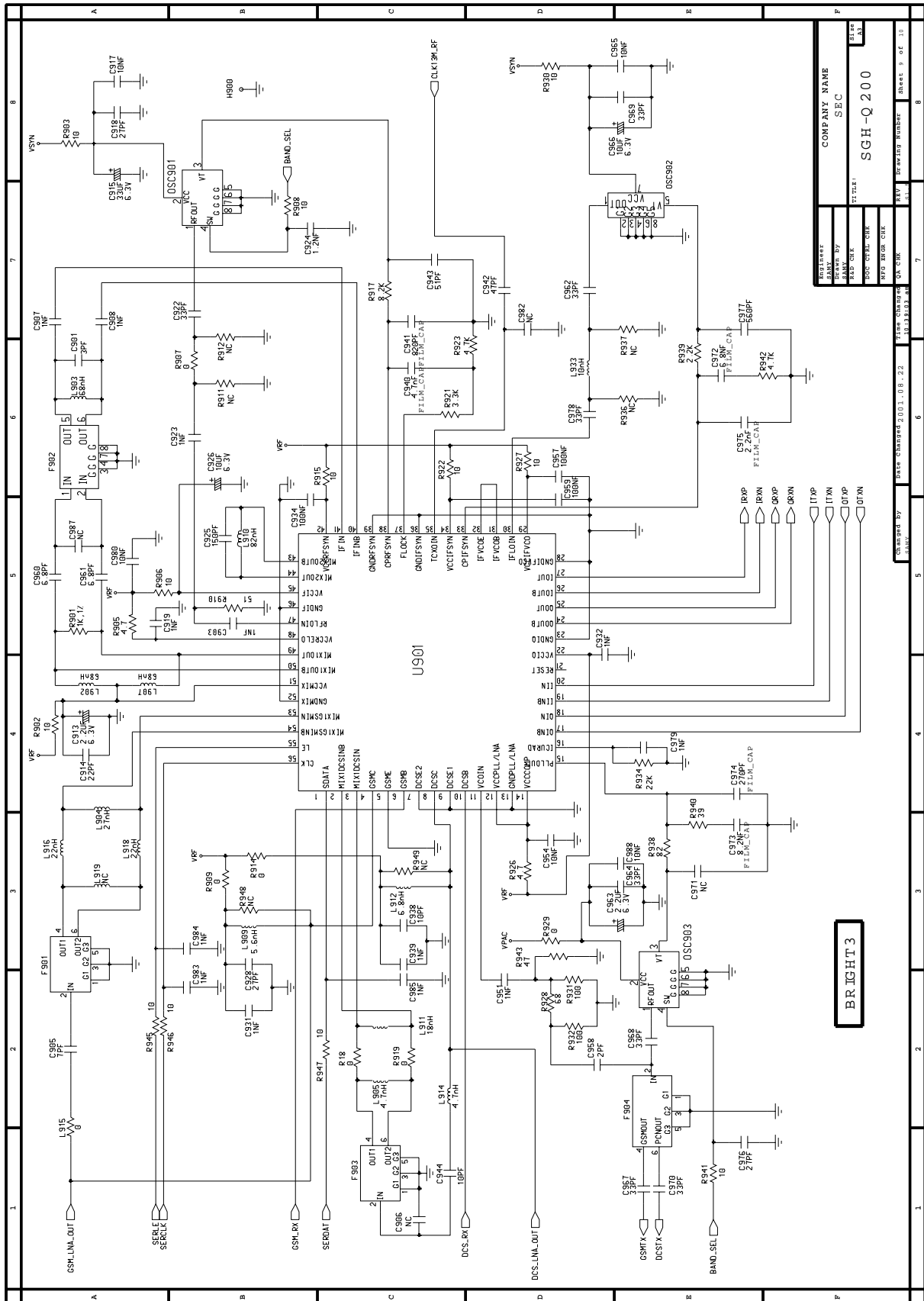




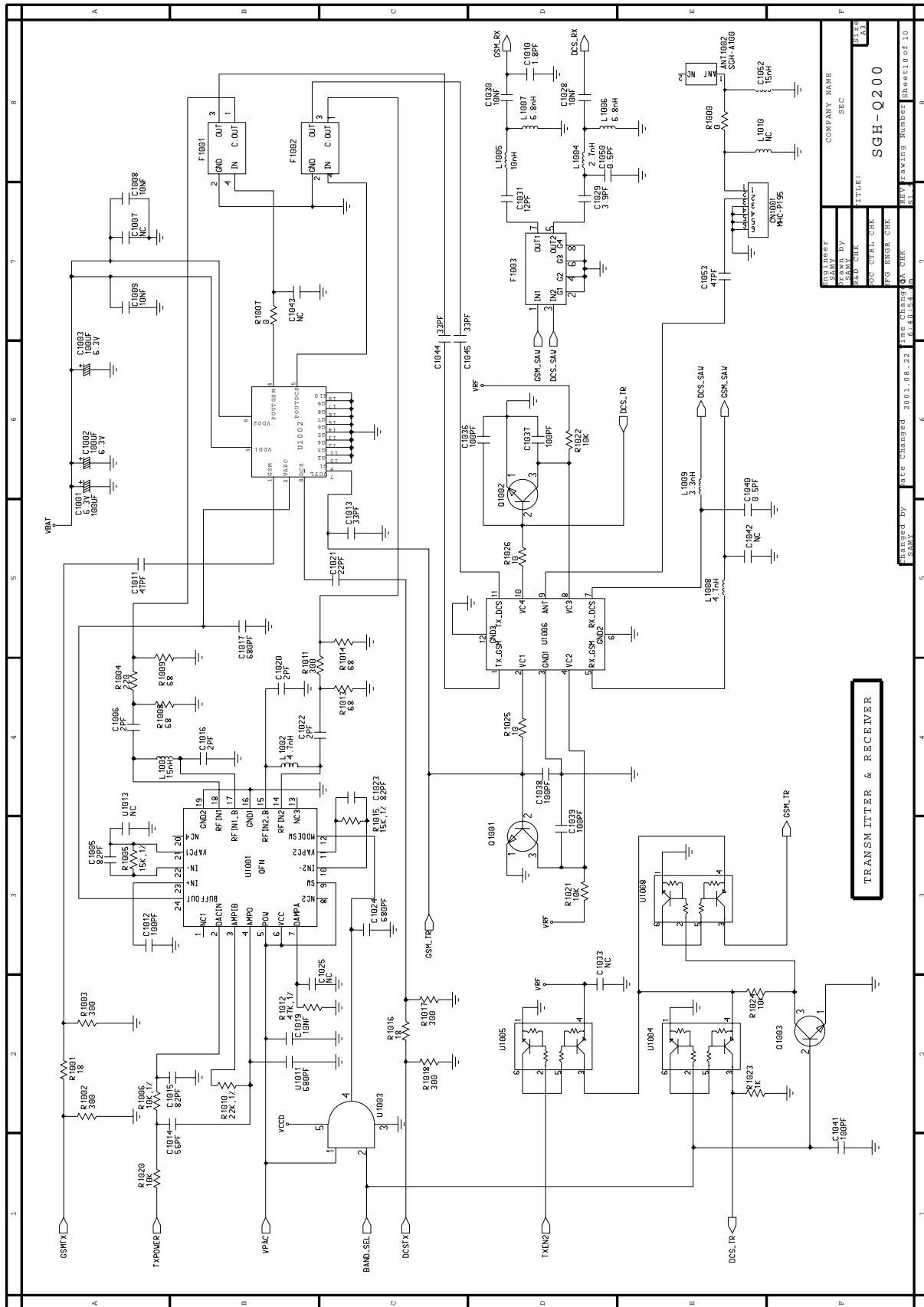
### 5-22. X-TAL(13 MHz) & SIM Circuit Diagram



# 5-23. Bright3 Circuit Diagram



# 5-24. Transmitter & Receiver Circuit Diagram



TRANSMITTER & RECEIVER

DESIGNED BY	SEC	COMPANY NAME	SGH-Q200
DRAWN BY	SEC	TITLE	SGH-Q200
CHECKED BY	SEC	REV	REV Drawing Name: Sheet1 of 10
APPROVED BY	SEC	DATE	2003.08.23