

* Some of the contents of this manual may differ from your phone, depending on the software installed or your service provider.



SAMSUNG

**GPRS TELEPHONE
SGH-E300**



Contents

Important safety precautions.....	7
Unpacking	9
Your phone.....	10
Phone layout.....	10
Display.....	13
Service light.....	16
Camera	17
Getting started	18
Installing the SIM card	18
Charging the battery	20
Switching the phone on or off.....	22
Call functions	23
Making a call.....	23
Adjusting the volume	25
Answering a call	26
Viewing missed calls	27
Quickly switching to Silent mode.....	29
Selecting functions and options.....	30
Using the soft keys	30
Selecting options	31
Phonebook	32
Storing a number with a name	32
Using Phonebook entry options.....	35
Dialling a number from Phonebook.....	37
Speed-dialling	38
Searching for and dialling a number in Phonebook.....	40
Editing a caller group	42
Deleting all of the Phonebook entries.....	43
Checking the memory status	44
Using the service dialling numbers	45

Entering text	46
Changing the text input mode	47
Using T9 mode	48
Using Alphabet mode	50
Using Number mode.....	51
Using Symbol mode	51
 Options during a call	 52
Putting a call on hold.....	52
Using the menu functions	53
Switching the microphone off (Mute)	54
Muting or sending key tones.....	55
Sending a sequence of DTMF tones	55
Searching for a number in Phonebook	56
Call waiting.....	57
Making a multi-party call	57
 Using the menus	 60
Accessing a menu function by scrolling	60
Using shortcuts	61
List of menu functions	62
 SIM AT	 68
 Call records	 69
Missed calls (<i>Menu 2.1</i>)	69
Received calls (<i>Menu 2.2</i>)	70
Dialled calls (<i>Menu 2.3</i>).....	70
Delete all (<i>Menu 2.4</i>)	71
Call time (<i>Menu 2.5</i>)	72
Call costs (<i>Menu 2.6</i>)	73
 Network services.....	 74
Call diverting (<i>Menu 3.1</i>)	74
Call barring (<i>Menu 3.2</i>)	76
Call waiting (<i>Menu 3.3</i>)	78
Network selection (<i>Menu 3.4</i>).....	79
Caller ID (<i>Menu 3.5</i>)	80
Closed user group (<i>Menu 3.6</i>)	80

Sound settings	83
Ringtone (Menu 4.1)	83
Ring volume (Menu 4.2)	83
Alert type (Menu 4.3)	84
Keypad tone (Menu 4.4)	84
Message tone (Menu 4.5)	85
Folder tone (Menu 4.6)	86
Power on/off (Menu 4.7)	86
Alert on call (Menu 4.8)	87
Extra tones (Menu 4.9)	87
 Messages.....	 88
Text messages (Menu 5.1)	88
Multimedia messages (Menu 5.2)	96
Push messages (Menu 5.3)	109
Delete all (Menu 5.4)	109
Voice mail (Menu 5.5)	110
Broadcast messages (Menu 5.6)	111
Memory status (Menu 5.7)	112
 Funbox	 113
WAP browser (Menu 6.1)	113
Games (Menu 6.2)	120
Sounds (Menu 6.3)	123
Images (Menu 6.4)	123
Delete all (Menu 6.5)	124
Memory status (Menu 6.6)	125
 Organiser	 126
Alarm (Menu 7.1)	126
Calendar (Menu 7.2)	128
Time & date (Menu 7.3)	131
Calculator (Menu 7.4)	132
To do list (Menu 7.5)	133
Voice memo (Menu 7.6)	135
Currency exchange (Menu 7.7)	137
 Camera.....	 138
Taking a photo	138
Take photos (Menu 8.1)	143
My photos (Menu 8.2)	143
Video (Menu 8.3)	144
Memory status (Menu 8.4)	146

Phone settings	147
Activate infrared (Menu 9.1)	147
Display settings (Menu 9.2)	148
Greeting message (Menu 9.3)	150
Own number (Menu 9.4)	151
Language (Menu 9.5)	151
Security (Menu 9.6)	151
Extra settings (Menu 9.7)	155
Short cut (Menu 9.8)	156
Reset settings (Menu 9.9)	157
 Solving problems	 158
 Access codes	 161
Phone password	161
PIN	162
PUK	162
PIN2	163
PUK2	163
Barring password	164
 Health and safety information	 165
SAR certification information	165
Precautions when using batteries	166
Road safety	168
Operating environment	168
Electronic devices	169
Potentially explosive environments	171
Emergency calls	172
Other important safety information	173
Care and maintenance	174
 Glossary	 176
 Index	 181
 Quick reference card	 187



Important safety precautions

Read these guidelines before using your wireless phone. Failure to comply with them may be dangerous or illegal.

Road safety at all times

Do not use a hand-held phone while driving; park the vehicle first.

Switching off when refuelling

Do not use the phone at a refuelling point (service station) or near fuels or chemicals.

Switching off in an aircraft

Wireless phones can cause interference. Using them in an aircraft is both illegal and dangerous.

Switching off in hospitals

Switch your phone off near medical equipment. Follow any regulations or rules in force.

Interference

All wireless phones may be subject to interference, which could affect their performance.

Special regulations


Follow any special regulations in force in any area and always switch your phone off whenever it is forbidden to use it, or when it may cause interference or danger (in a hospital for example).

Important safety precautions

Sensible use

Use only in the normal position (held to the ear). Avoid unnecessary contact with the antenna when the phone is switched on.

Emergency call

Ensure the phone is switched on and in service. Key in the emergency number for your present location, then press the  key. You must deactivate any unnecessary features in use before you can make an emergency call. Give all necessary information as accurately as possible. Do not end the call until given permission to do so.

Water resistance

Your phone is not water-resistant. Keep it dry.

Accessories and batteries

Use only Samsung-approved accessories and batteries. Use of any unauthorised accessories could damage your phone and may be dangerous.

Qualified service

Only qualified service personnel may repair your phone.

For more detailed safety information, see "Health and safety information" on page 165.

CAUTION

RISK OF EXPLOSION IF A BATTERY IS
REPLACED BY AN INCORRECT TYPE.

DISPOSE OF USED BATTERIES ACCORDING
TO THE INSTRUCTIONS.

Unpacking

Your package contains the following items:



Handset



Travel Adapter



Battery



User's Manual

You can obtain the following accessories for your phone from your local Samsung dealer:

- Standard/extended batteries
- Simple handsfree car kit
- Travel adapter
- Stylish handsfree car kit
- Headset
- PC data link kit
- Hand strap

Note: The items supplied with your phone and available accessories may be different, depending on your country or service provider.

Your phone

Phone layout

The following illustrations show the main elements of your phone:



Key(s) Description



In Menu mode, scrolls through the menu options and Phonebook.

In Idle mode, the Up key allows you to access the **Camera** menu and the Down key to access your favourite menu option directly. For further details about shortcuts, see page 156.



When entering text, moves the cursor to the left or right, depending on which side you push.

In Idle mode, allows you to access your favourite menu options directly. For further details about shortcuts, see page 156.



(soft keys)

Performs the functions indicated by the screen text above them, on the bottom line of the display.



In Idle mode, launches the WAP (Wireless Application Protocol) browser.

In Menu mode, selects the highlighted menu or option or confirms your input.









Deletes characters from the display.

In Menu mode, returns you to the previous menu level.



Makes or answers a call.

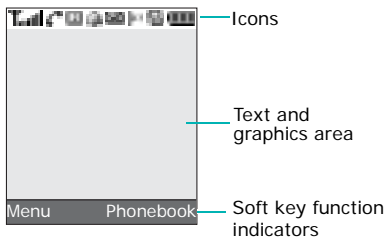
In Idle mode, recalls the last number dialled or received when held down.

Key(s)	Description (continued)
	Ends a call. Also switches the phone on and off when held down. In Menu mode, cancels your input and returns the phone to Idle mode.
	In Idle mode, accesses your voice mail when held down.
	Enters numbers, letters, and some special characters.
	Enters special characters. Performs various functions.
	(on the right side of the phone) In Idle mode, accesses the Camera menu to allow you to use the camera application. Turns the camera on when held down. In Capture mode, takes a photo.
	(on the left side of the phone) During a call, adjusts the earpiece volume. In Idle mode, with the phone open, adjusts the keypad tone volume. With the phone closed, turns the external display on when held down. In Menu mode, scrolls through menu options and Phonebook.

Display

Display Layout

The display has three areas:



Area	Description
First line	Displays various icons. See page 14.
Middle lines	Displays messages, instructions, and any information that you enter, such as the number you are dialling.
Last line	Shows the current functions assigned to the two soft keys.

Icons

Icon	Description
------	-------------



Shows the received signal strength. The greater the number of bars, the stronger the signal.



Appears when a call is in progress.



Appears when you are out of your service area. When it displays, you cannot make or receive a call.



Appears when you are connected to the GPRS network.



Appears when you are out of your home area and have logged onto a different network; for example, when travelling in other countries.



Appears when the Call diverting feature is activated.



Appears when a new text message has been received.



Appears when a new voice mail message has been received.



Appears when a new multimedia message has been received.



Appears when you set an alarm to ring at a specified time.

Icon Description (continued)



Appears when Silent mode is active or you set the phone to vibrate when you receive a call. You set this option in the **Alert type** menu (**Menu 4.3**). For further details, see page 29 and page 84 respectively.



Appears when the IrDA port is active. For details, see page 147.



Appears when Mute mode is active.



Shows the level of your battery. The more bars you see, the more power you have remaining.

Backlight

The backlight illuminates the display and the keypad. When you press any key or open the phone, the backlight comes on. It goes off when no keys are pressed within a given period of time, depending on the setting in the **Back light** menu (**Menu 9.2.4**). The display turns off after one minute to conserve battery power.

To specify the length of time the backlight is active, set the **Back light** menu (**Menu 9.2.4**). See page 149 for further details.

External display

Your phone has an external display on the front of your phone. It indicates when you have an incoming call or a message. It also alerts you at a specified time when you have set an alarm. The backlight turns on and the corresponding icon appears on the external display.

You can select the colour of an image to be displayed in the **Front LCD display** menu (**Menu 9.2.2**). See page 149 for further details.

To turn the display on with the phone closed, press and hold either of the Volume keys on the left side of the phone.

Service light

The service light is on the phone. It flashes when services are available on the phone.

To activate or deactivate the service light, use the **Service light** menu (**Menu 9.2.5**). See page 149 for further details.



Camera

The camera module on the front of your phone allows you to take a photo and record a video while on the move.

For further details about the Camera feature, see page 138.


Getting started

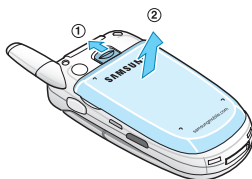
Installing the SIM card

When you subscribe to a cellular network, you are provided with a plug-in SIM card loaded with your subscription details, such as your PIN, any optional services available, and so on.

Important! The plug-in SIM card and its contacts can be easily damaged by scratches or bending, so be careful when handling, inserting, or removing the card.

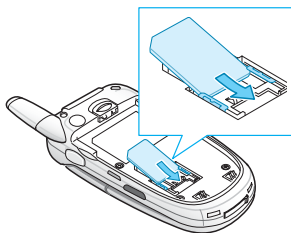
Keep all SIM cards out of the reach of small children.

1. If necessary, switch the phone off by holding down the  key until the power-off image displays.
2. Remove the battery. To do so:
 - ① Slide the battery lock towards the top of the phone and hold it in that position.
 - ② Lift the battery away, as shown.

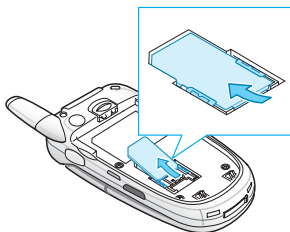


- Slide the SIM card into the SIM card socket, as shown, so that the card locks into position.

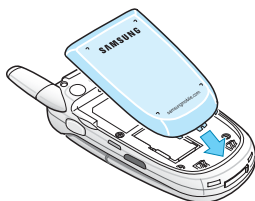
Make sure the metal contacts of the card face into the phone.



Note: When you need to remove the SIM card, slide it upwards, as shown, and take it out of the socket.

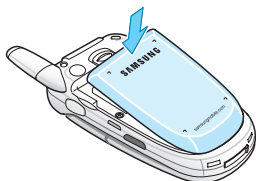


- Replace the battery so that the tabs on the end align with the slots at the bottom of the phone.



Getting started

5. Press the battery down until it clicks into place. Make sure that the battery is properly installed before switching the power on.



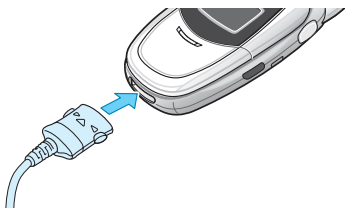
Charging the battery

Your phone is powered by a rechargeable Li-ion battery. A travel adapter comes with your phone for charging the battery. Use only approved batteries and chargers. Ask your local Samsung dealer for further details.

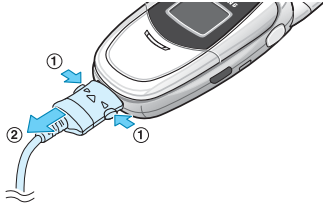
The travel adapter allows you to use the phone while the battery is charging, but this causes the phone to charge more slowly.

Note: You must fully charge the battery before using your phone for the first time. A discharged battery recharges fully in approximately 200 minutes.

1. With the battery in position on the phone, plug the connector of the travel adapter into the jack at the bottom of the phone.



2. Plug the adapter into a standard AC wall outlet.
3. When charging is finished, unplug the adapter from the power outlet and disconnect it from the phone by pressing the buttons on both sides of the connector and pulling the connector out.




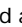

Note: You must unplug the adapter before removing the battery from the phone during charging; otherwise, the phone could be damaged.

Low battery indicator

When the battery is weak and only a few minutes of talk time remain, a warning tone sounds and a message repeats at regular intervals on the display. When this happens, your phone turns off the backlight to conserve the remaining battery power.


When the battery level becomes too low, the phone automatically turns off.

Switching the phone on or off

1. Open the phone.
2. Press and hold the  key until the phone switches on.
3. If the phone asks you to enter a password, enter a password and press the  key. The password is preset to "00000000" at the factory. For further details, see page 161.
4. If the phone asks for a PIN, enter the PIN and press the  key or **OK** soft key. For further details, see page 162.


The phone searches for your network and, after finding it, the idle screen appears on the display. Now, you can make or receive calls.

Note: The display language is preset to **Automatic** at the factory. To change the language, use the **Language** menu (**Menu 9.5**). For further details, see page 151.

5. When you wish to switch the phone off, press and hold the  key until the power-off image displays.


Call functions

Making a call

When the idle screen displays, enter the area code and phone number, then press the  key.

Note: When you activate the **Auto redial** option in the **Extra settings** menu (**Menu 9.7**), the phone will automatically redial up to ten times when the person does not answer the call or is already on the phone. See page 155 for further details.


Making an international call

1. Press and hold the **0** key.
The **+** character appears.
2. Enter the country code, area code and phone number and press the  key.

Correcting the number

To clear	Press the
the last digit displayed	C key.
any other digit in the number	Left or Right key until the cursor is immediately to the right of the digit to be cleared. Press the C key.
the whole display	C key and hold it for more than one second.



Ending a call


When you want to end your call, briefly press the  key or close the phone.

Redialling the last number

The phone stores the numbers of the calls you've dialled, received, or missed, if the call recipient or caller is identified. See "Call records" on page 69 for further details.

To recall any of these numbers:

1. If you have typed characters on the display, press the  key to return to Idle mode.
2. Press the  key to display a list of the most recent numbers used, in the order you dialled or received them.
3. Use the Up and Down keys to scroll through the numbers until the number you want highlights.

4. To	Press the
dial the number	 key.
edit the number	i key or Options soft key and select Edit . Change the number, referring to "Correcting the number" on page 23.
delete the number	i key or Options soft key and select Delete .
delete all of the numbers on the Call log list	i key or Options soft key and select Delete all . For details, see page 71.

Making a call from Phonebook

You can store phone numbers that you use regularly in the SIM card or in the phone's memory, which are collectively called Phonebook.

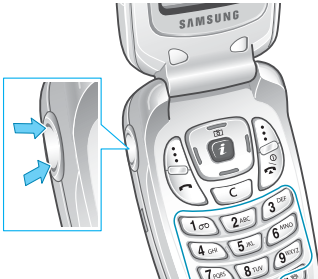
Once you have stored numbers in Phonebook, you can dial a number by pressing a few keys or assign your most frequently-used numbers to number keys using the Speed Dial feature.

For further details about the Phonebook feature, see page 32.

Adjusting the volume

During a call, if you want to adjust the earpiece volume, use the Volume keys on the left side of the phone.

Press the ▲ key to increase the volume level and the ▼ key to decrease the level.





In Idle mode, you can also adjust the keypad tone volume using these keys.

Answering a call


When somebody calls you, the phone rings and displays the incoming call image.


The caller's phone number or name, if stored in Phonebook, displays.

1. If necessary, open the phone. Press the  key or the **Accept** soft key to answer the incoming call.

When the **Anykey answer** option in the **Extra settings** menu (**Menu 9.7**) is activated, you can press any key to answer a call except for the  key and the **Reject** soft key. See page 156.

When the **Active folder** option in the **Extra settings** menu (**Menu 9.7**) is activated, you can answer the call simply by opening the phone. See page 155.

Note: To reject the call, press and hold one of the Volume keys before opening the phone, or press the **Reject** soft key or  key.

2. End the call by closing the phone or pressing the  key.

Note: You can answer a call while using Phonebook or menu features. After ending the call, the display returns to the function screen you were using.

Viewing missed calls


When you are unable to answer a call for any reason, you can find out who called you so that you can call the person back.

The number of calls you've missed displays on the idle screen immediately after a call is missed.

To view a missed call immediately:

1. If the phone is closed, open the phone.
2. Press the **i** key or **View** soft key.

The number for the most recent missed call displays, if available.

3. To	Press the
scroll through the missed calls	Up or Down key.
call the number displayed	 key.
edit or delete a missed call number	i key or Select soft key. See below.

Editing a missed call number


Note: When the number for the missed call is not available, the **Edit** option does not display.

1. Press the **i** key.

You can also press the **Options** soft key and then select the **Edit** option using the Up or Down key.


Call functions

2. Press the **i** key or **Select** soft key.
3. Change the number.

4. To	Press the
call the number	 key.
store the number	i key or Save soft key and enter a name and location. For further details, see page 32.

Deleting a missed call


1. Press the **i** key or **Options** soft key.
2. If necessary, press the Up or Down key to highlight the **Delete** option.
3. Press the **i** key or **Select** soft key.

You can press the  key at any time to exit the Missed call feature.


Note: You can access the Missed call feature at any time by selecting the **Missed calls** menu (**Menu 2.1**). For further details, see page 69.

Quickly switching to Silent mode

Silent mode is convenient when you wish to stop the phone from making noise, in a theatre for example.

In Idle mode, press and hold the **#** key until the “Silent mode” message and the Vibration icon () display.



In Silent mode, instead of sounds, your phone will vibrate, flash its light, or do nothing, depending on the function and the situation.

To exit and reactivate the previous sound settings, press and hold the **#** key again until “Exit silent mode” appears. The Vibration icon () no longer displays.

Notes:

- When you turn the phone off, Silent mode is automatically deactivated.
- Activating Silent mode will not turn off the camera shutter sound.

Selecting functions and options

Your phone offers a set of functions that allow you to customise it. These functions are arranged in menus and sub-menus, accessed using the two soft keys,  and . Each menu and sub-menu allows you to view and alter the settings of a particular function.

Using the soft keys

The roles of the soft keys vary depending on the function you are currently using; the labels on the bottom line of the display just above each key indicate their current role.

Example:





Press the left soft key to access Menu mode.

Press the right soft key to access the Phonebook feature.

Selecting options

To view the various functions and options available and to select the one you want:

1. Press the appropriate soft key.

2. To	Press the
select the: <ul style="list-style-type: none"> • function displayed • option highlighted 	i key or Select soft key.
view the next function or highlight the next option on a list	Down key or ▼ key on the left side of the phone.
move back to the previous function or option on a list	Up key or ▲ key on the left side of the phone.
move back up one level in the menu structure	C key or  soft key.
exit the menu structure without changing the settings	 \D key.

In some functions, you may be asked for a password or PIN. Enter the code and press the **i** key or **OK** soft key.

Note: When you access a list of options, your phone highlights the currently active option. If, however, there are only two options, such as **On/Off** or **Enable/Disable**, your phone highlights the option that is not currently active, so that you can select it directly.

Phonebook

You can store phone numbers and their corresponding names in both your SIM card and your phone's memory. They are physically separate but are used as a single entity, called Phonebook.

Note: Depending on the manufacturer of your SIM card, the maximum number of phone numbers the SIM card can store may differ.

Storing a number with a name

There are two ways to store a number:




- Using the **i** key or **Save** soft key in Idle mode
- Using the **Add entry** option in the Phonebook menu

Storing a number in Idle mode

As soon as you start to enter a number, **Save** appears above the left soft key to allow you to store the number in Phonebook.

1. Enter the number you want to store.

Note: If you make a mistake while entering a number, correct it using the **C** key. For further details, see page 23.

2. When you are sure that it is correct, press the **i** key or **Save** soft key.
3. Select an icon to identify the category in which the number is to be stored. Three categories are available:
 - : Mobile phone number
 - : Office number
 - : Home number

To select the category, press the Left or Right key and press the **i** key or **Select** soft key.

4. Select a memory location, either **SIM** or **Phone**, by pressing the Up or Down key and press the **i** key or **Select** soft key.


Note: When you change phones, any numbers stored in your SIM card memory are automatically available with the new phone, whereas any numbers stored in the phone's memory will need to be reentered.

5. Enter a name and press the **i** key or **OK** soft key.

For further details about how to enter characters, see page 46.


6. If you do not want to save the number and name in the suggested location, press the **C** key to clear the location number and enter another location by pressing the numeric keys.
7. Press the **i** key or **OK** soft key to store the name and number.

After storing, the phone displays the Phonebook entry or name you just created.

8. To	Press the
use the entry options	i key or Options soft key. For further details, see page 35.
return to the idle screen	 key.

Storing a number using the Phonebook menu

1. When the idle screen displays, press the **Phonebook** soft key.
2. Scroll to **Add entry** by pressing the Up or Down key and press the **i** key or **Select** soft key.
3. Select an icon to identify the category of the number to be stored by pressing the Left or Right key, and press the **i** key or **Select** soft key.

Note: The E-mail icon () is available in this step. It allows you to save an e-mail address instead of a phone number.

4. Select a memory location, either **SIM** or **Phone**, by pressing the Up or Down key and press the **i** key or **Select** soft key.

Note: When you are saving an e-mail address, SIM is not available.

5. Enter a name and press the **i** key or **OK** soft key.

For further details about how to enter characters, see page 46.

6. Enter the number or address you want to store and press the **i** key or **Save** soft key.
7. Continue the procedure from step 6 on page 33 to store the number.

Using Phonebook entry options

While accessing any Phonebook entry, press the **i** key or **Options** soft key to access the options for the entry.

The following options are available:

Photo caller ID: allows you to assign one of the photos you took using the camera as a caller ID image to be displayed when you receive a call from the selected number. For details about the Camera feature, see page 138.

Select photo: allows you to select a photo for the number.

Take photo: allows you to take a new photo to be used as a caller ID.

View: displays the photo assigned to the number.

Delete caller ID: cancels the photo caller ID setting for the number.


Edit: allows you to edit the name and/or number.

Select **One entry** to change the name and/or phone number for the selected entry. If you change the name, the number is saved separately with the new name.

Select **All entry** to change only the name of the entry.

Copy: allows you to copy the number to another location. You can select the memory location, either SIM or Phone, and the location number.

Paste: allows you to paste the number into the normal dialling mode. Use this option to dial a number similar to one in Phonebook, such as a different extension in the same office.

Use the **C** key to change the number as required; see page 23 for further details. When you are ready to dial, press the  key.

Delete: allows you to delete the selected number from Phonebook. You are asked to confirm that you wish to delete the name and number by pressing the **i** key or **Yes** soft key.

Caller group: allows you to organise your Phonebook entries in caller groups so that the phone alerts you in a specific way when a person from one of your groups calls you. Select one of the ten groups available.

To remove an entry from a group, select the **No group** option.

For further details about how to change caller group properties, see page 42.

Add entry: allows you to add a new number to the currently selected name.


Dialling a number from Phonebook

Once you have stored phone numbers in Phonebook, you can dial them easily and quickly by using the location numbers that were assigned to them in Phonebook.

To dial a number from the SIM card:

1. In Idle mode, enter the location number of the number you want to dial and press the **#** key.


The list of the entries in the SIM card appears.

2. If necessary, scroll through the list using the Up or Down key.
3. When the number displays, press the **Dial** soft key,  key, or **i** key.

To dial a number from the phone's memory:

1. In Idle mode, press and hold the **0** key. A **+** appears.
2. Enter the location number of the number you want and press the **#** key.

The list of the entries in the phone's memory appears.

3. If necessary, scroll through the list using the Up or Down key.
4. When the number displays, press the **Dial** soft key,  key, or **i** key.

Speed-dialling

You can assign up to eight phone numbers from Phonebook that you use most frequently to the number keys (**2** to **9**), and then dial them easily whenever you want, simply by pressing and holding the associated number key.





Setting up speed-dial entries

1. When the idle screen displays, press the **Phonebook** soft key.
2. Scroll to **Speed-dial list** by pressing the Up or Down key and press the **Select** soft key or **i** key.
3. Select the key to which you wish to assign the speed-dialling number, from the **2** to **9** keys, and press the **Select** soft key or **i** key.

Note: Memory location 1 is reserved for your Voice Mail server number.

If you have already assigned a number to the key, the **Options** soft key replaces the **Select** soft key. Go to step 6.

4. Select a Phonebook entry from the list and press the **View** soft key or **i** key.
5. Select a number, if the entry has more than one, by pressing the Up or Down key and press the **Select** soft key or **i** key.

6. Once you have assigned a number to the key, you can use the following options by pressing the **Options** soft key or  key:
 - **Change**: allows you to assign a different number to the key.
 - **Delete**: allows you to clear the setting so that no number is assigned to the key.
 - **Delete all**: allows you to clear the settings for all keys so that no numbers are assigned to any of the keys.
 - **Number**: allows you to view the number assigned to the key. You can dial the number by pressing the  key.
7. When you are finished, press the  soft key or  key.

Speed-dialling

To speed-dial the numbers assigned to the **2** to **9** keys, press and hold the appropriate key.

Searching for and dialling a number in Phonebook


After storing numbers in Phonebook, you can search for them in two ways; by name and by caller group.

Searching for a number by name

1. When the idle screen displays, press the **Phonebook** soft key.
2. Press the **i** key or **Select** soft key when **Search** highlights. You are asked to enter a name.
3. Enter the first few letters of the name that you want to find.

The Phonebook entries are listed, highlighting the first entry matching your input.

4. To	Press the
view the highlighted entry	i key or View soft key.
select a different entry	Up or Down key until the entry you want highlights.
look for a name starting with a different letter	key labelled with the letter you want.

5. Once you have found the entry, press the  key to dial the number, or press the **i** key or **Options** soft key to access the Phonebook entry options; for further details, see page 35.

Searching for a number by caller group


1. When the idle screen displays, press the **Phonebook** soft key.
2. Scroll to **Group search** by pressing the Up or Down key and press the **i** key or **Select** soft key. You are asked to enter a group name.
3. Enter the first few letters of the group name that you want to find.

The caller groups are listed, starting with the first group matching your input.


4. If necessary, scroll to a group by pressing the Up or Down key and press the **i** key or **View** soft key.

The Phonebook entries in the caller group are listed.

5. To	Press the
view the highlighted entry	i key or View soft key.
select a different entry	Up or Down key until the entry you want highlights.

6. Once you have found the entry, press the  key to dial the number, or press the **i** key or **Options** soft key to access the Phonebook entry options; for further details, see page 35.

Editing a caller group

1. When the idle screen displays, press the **Phonebook** soft key.
2. Scroll to **Group edit** by pressing the Up or Down key and press the **i** key or **Select** soft key.
3. Scroll through the group list by pressing the Up or Down key.
4. When the group you want highlights, press the **i** key or **Options** soft key.
5. Select each option and change the settings, as you want. The following options are available:
 - **Call ringtone:** allows you to set a ring tone to be used when you receive a voice call from a person in the group.
 - **SMS tone:** allows you to set a ring tone to be used when you receive a message from a person in the group.
 - **Graphic:** allows you to set a graphic icon to be displayed when you receive a voice call from a person in the group.
 - **Group name:** allows you to assign a name to the group. For further details about how to enter characters, see page 46.
6. When you have finished, press the **C** or  key.

Deleting all of the Phonebook entries

You can delete all of the entries in the selected memory or both memories.

1. When the idle screen displays, press the **Phonebook** soft key.
2. Scroll to **Delete all** by pressing the Up or Down key and press the **i** key or **Select** soft key.
3. To place a check mark by the memory you want to empty, **All**, **SIM** or **Phone**, press the **i** key.



You can remove the check mark by pressing the **i** key again.

4. When you have finished marking, press the **Delete** soft key to delete the entries in the selected memory.
5. Enter the phone password and press the **i** key or **OK** soft key.

Note: The password is preset to "00000000" at the factory. To change this password, see page 153.



6. When a confirmation message appears, press the **i** key or **Yes** soft key.

To cancel the deletion, press the **No** soft key.

7. When the display confirms again, press the **i** key or **Yes** soft key.
8. When you have finished, press the  soft key or  key.

Checking the memory status

You can check how many names and numbers are stored in Phonebook, in both the SIM card and phone's memory. You can also see the capacity of both memories.

1. When the idle screen displays, press the **Phonebook** soft key.
2. Select the **Memory status** option by pressing the Up or Down key and press the **i** key or **Select** soft key.
3. Press the Up or Down key to view the number of existing and total entries available in the SIM card and phone's memory.
4. When you have finished, press the  soft key or  key.

Using the service dialling numbers

You can view the list of Service Dialling Numbers (SDN) assigned by your service provider. These numbers include emergency numbers, directory enquiries and voice mail numbers.

1. When the idle screen displays, press the **Phonebook** soft key.
2. Select the **SDN** option by pressing the Up or Down key and press the **i** key or **Select** soft key.
3. Scroll through the numbers by using the Up or Down key.
4. To dial the number displayed, press the **i** key or **Dial** soft key.

Note: This option is available only when your SIM card supports Service Dialling Numbers.



Entering text

When using your phone, you will often need to enter text, such as when storing a name in Phonebook, creating your personal greeting or scheduling events on your calendar. You can enter alphanumeric characters by using your phone's keypad.

Your phone has the following text input modes:

- **T9 mode**

This mode allows you to enter words with only one keystroke per letter. Each key on the keypad has more than one letter; for example, pressing the **5** key can enter J, K, or L. However, T9 mode automatically compares the series of keystrokes you make with an internal linguistic dictionary to determine the most likely word, thus requiring far fewer keystrokes than the traditional Alphabet mode.

- **Alphabet mode**

This mode allows you to enter letters by pressing the key labelled with the letter you want. Press the key once, twice, three, or four times until it displays.

- **Number mode**

This mode allows you to enter numbers.

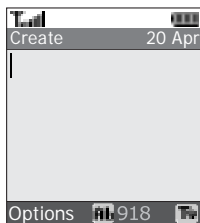
- **Symbol mode**

This mode allows you to enter various symbols and special characters.

Changing the text input mode

When you are in a field that allows characters to be entered, you will notice the text input mode indicator on the display.

Example: Writing a text message



Text input mode indicator

To select	Press the right soft key until
T9 mode	T9 displays. See page 48.
Alphabet mode	A displays. See page 50.
Number mode	1 displays. See page 51.
Symbol mode	the symbol list displays. See page 51.

Note: Additional text input mode may be available, depending on your country.

Using T9 mode

T9 is a predictive text input mode that allows you to key in any character using single keystrokes. This text input mode is based on a built-in dictionary.

To enter a word in T9 mode:

1. When you are in T9 mode, start entering a word by pressing the keys **2** to **9**. Press each key only once for each letter.

Example: To enter "Hello" in T9 mode, press the **4**, **3**, **5**, **5**, and **6** keys.

The word that you are typing appears on the display. It may change with each key that you press.

2. Enter the whole word before editing or deleting the keystrokes.
3. When the word displays correctly, go to step 4.

If the word doesn't display correctly, press the **0** key or the Up or Down key repeatedly to display alternative word choices for the keys that you have pressed.

Example: Both "Of" and "Me" use the **6** and **3** keys. The phone displays the most commonly used choice first.

4. Put a space by pressing the **#** key and start entering the next word.

To add a new word into the T9 dictionary:

1. After pressing the keys corresponding to the word you want to add, press the **O** or Down key to display the alternative words.
2. When you press the **O** or Down key at the last alternative word, the display shows **Add** on the bottom line. Press the **i** key or **Add** soft key.
3. If necessary, clear the word using the **C** key and enter the word you want to add using Alphabet mode. See page 50.
4. Press the **OK** soft key.

The word is added to the T9 dictionary and becomes the first word for the associated keypress series.

Note: This feature may not be available for some languages.

- To enter periods, hyphens, or apostrophes, press the **1** key. T9 mode applies grammar rules to ensure that correct punctuation is used.
- To shift case in T9 mode, use the **✕** key. There are three cases; Initial capital (**Ab**), Capital lock (**AB**), and Lower case (**ab**).
- You can move the cursor by using the Left and Right keys. To delete letters, press the **C** key. Press and hold the **C** key to clear the display.

Using Alphabet mode

Use the **1** to **0** keys to enter your text.

1. Press the keys labelled with the letter you want:

- Once for the first letter
- Twice for the second letter
- And so on

2. Select the other letters in the same way.

Note: The cursor moves to the right when you press a different key. When entering the same letter twice or a different letter on the same key, just wait for a few seconds for the cursor to move to the right automatically, and then select the next letter.

Refer to the table below for further details about available characters:

Key	Characters in the order displayed	
	Upper Case	Lower Case
1	. , - ? ! @ : () / 1 _	
2	A B C 2 Ä Å Æ Ç Γ	a b c 2 à ä å æ Γ
3	D E F 3 É Δ Φ	d e f 3 è é Φ
4	G H I 4 Θ Ψ	g h i 4 ì Ψ
5	J K L 5 Λ	j k l 5 Λ
6	M N O 6 Ñ Ø Ö ö	m n o 6 ñ ø ò ö
7	P Q R S 7 Π Σ Ξ	p q r s 7 β Σ Ξ
8	T U V 8 Ü ü	t u v 8 ù ü
9	W X Y Z 9 Ω	w x y z 9 Ω
0	Space + = < > € £ \$ % & ¥ ¤ 0	

Note: The characters available in Alphabet mode may be different, depending on your country.

- To insert a space, press the **#** key.
- To shift case in Alphabet mode, use the **✕** key. There are three cases; Initial capital (**Ab**), Capital lock (**AB**), and Lower case (**ab**).
- You can move the cursor by using the Left and Right keys. To delete letters, press the **C** key. Press and hold the **C** key to clear the display.

Using Number mode

Number mode enables you to enter numbers into a text message. Press the keys corresponding to the digits you want to enter.

Using Symbol mode

Symbol mode enables you to insert symbols into a text message.

To	Press the
select a symbol	corresponding numeric key.
display more symbols	Up or Down key.
insert the symbol(s) into your message	i key or OK soft key.
clear the symbol(s)	C key. When the input field is empty, this key exits Symbol mode.

Options during a call

Your phone provides a number of control functions that you can use during a call.

Putting a call on hold


You can place the current call on hold whenever you want. You can make another call while you have a call in progress if your network supports this service.

To place a call on hold, simply press the **Hold** soft key. You can reactivate the call whenever you want, by pressing the **Unhold** soft key.

To make a call while you have a call in progress:

1. Enter the phone number that you wish to dial or look it up in Phonebook.

For details about searching for a number in Phonebook, see page 40.

2. Press the  key to dial the second call.

The first call is automatically put on hold.


Or,

1. Put the current call on hold by pressing the **Hold** soft key.
2. Make the second call in the normal way.

When you have an active call and a call on hold, you may switch between the two calls, changing the one on hold to active and placing the other on hold.

To switch between the two calls, simply press the **Swap** soft key.

The current call is placed on hold and the call on hold is reactivated so that you can continue conversing with that person.

When you want to finish, end each call normally by pressing the  key.

Using the menu functions

You can access the main menu functions during a call.

1. Press the **i** key or **Options** soft key.
2. Press the **i** key or press the **OK** soft key when the **Menu** option highlights.
3. Press the Navigation keys to scroll through the menu list.

Note: You cannot use some menus during a call. They are deactivated on this list.

For further details about available menu functions, see the list on page 62.

Switching the microphone off (Mute)

You can temporarily switch your phone's microphone off so that the other person on the phone cannot hear you.

Example: You wish to say something to a person in the room, but do not want the person on the phone to hear you.

To switch the microphone off temporarily:

1. Press the **i** key or **Options** soft key.
2. Press the Down key to highlight the **Mute** option.
3. Press the **i** key or **OK** soft key.

The other person can no longer hear you.

To switch the microphone back on:

1. Press the **i** key or **Options** soft key.
2. If necessary, press the Down key to highlight the **Unmute** option.
3. Press the **i** key or **OK** soft key.

The other person can hear you again.

Muting or sending key tones

These options allow you to turn the key tones off or on. If the **Mute keys** option is selected, your phone does not transmit the DTMF (Dual Tone Multi-Frequency) tones of the keys, which allows you to press keys without hearing annoying key tones during a call.

Note: To communicate with answering machines or computerised telephone systems, the **Send keys** option must be selected.

Sending a sequence of DTMF tones

You can send the DTMF tones as a group after entering the entire number you need to send.

This option is helpful for entering a password or an account number when you call an automated system, like a banking service.

To send the DTMF tones:

1. While connected to the teleservice system, press the **i** key or **Options** soft key.
2. Press the Down key to highlight the **Send DTMF** option.
3. Press the **i** key or **OK** soft key.
4. Enter the number you want to send and press the **i** key or **OK** soft key.

The tones are sent.

Searching for a number in Phonebook

You can search for a number in Phonebook during a call.

1. Press the **i** key or **Options** soft key.
2. Press the Down key to highlight the **Phonebook** option.

3. Press the **i** key or **OK** soft key.

The Phonebook entries are listed.

4. Enter the name that you wish to find.

If you enter the first few letters of the name, the Phonebook entries are listed, starting with the first entry matching your input.



5. To view the highlighted entry, press the **i** key or **View** soft key.


For further details about the Phonebook feature, see page 32.

Call waiting

You can answer an incoming call while you have a call in progress, if your network supports this service and you have set the **Call waiting** menu (**Menu 3.3**) to **Activate**; see page 78. You are notified of an incoming call by a call waiting tone.

To answer a call while you have a call in progress:

1. Press the  key to answer the incoming call. The first call is automatically put on hold.
2. To switch between the two calls, press the **Swap** soft key.
3. To end the call on hold, press the  key or **Options** soft key and select the **End held call** option.

To end the current call, press the  key.

Making a multi-party call

A multi-party call is a network service that allows up to six people to take part simultaneously in a multi-party or conference call. For further details about subscribing to this service, contact your service provider.

Setting up a multi-party call

1. Call the first participant in the normal way.
2. Call the second participant in the normal way. The first call is automatically put on hold.

Options during a call

3. To join the first participant to the multi-party call, press the **i** key or **Options** soft key and select the **Join** option. Press the **i** key or **OK** soft key.
4. To add a new person to the multi-party call, call the new person in the normal way and press the **i** key or **Options** soft key. Select the **Join** option and press the **i** key or **OK** soft key.

You can add incoming callers by answering the call, pressing the **i** key or **Options** soft key, and selecting the **Join** option. Repeat as required.

Having a private conversation with one participant

1. Press the **i** key or **Options** soft key and select the **Select one** option. Press the **i** key.

The list of call participants appears.

2. Highlight a person from the list by pressing the Up or Down key and press the **☞** key.
3. When the **Private** option highlights, press the **i** key or **OK** soft key.

Now you can talk privately to that person. The other participants can still converse with each other.


4. To return to the multi-party call, press the **i** key or **Options** soft key and select the **Join** option. Press the **i** key or **OK** soft key.

All the multi-party call participants can now hear each other.


Dropping one participant

1. Press the **i** key or **Options** soft key and select the **Select one** option. Press the **i** key or **OK** soft key.

The list of call participants appears.

2. Highlight a person from the list by pressing the Up or Down key and press the  key.
3. Press the Down key to select the **Remove** option and press the **i** key or **OK** soft key.

The call with that participant ends, but you can continue to talk to the others.

4. When you want to end the multi-party call, close the phone or press the  key.

Using the menus

The phone offers a range of functions that allow you to tailor it to your needs. These functions are arranged in menus and sub-menus.

The menus and sub-menus can be accessed by scrolling using the Navigation keys or by using the shortcuts.



Accessing a menu function by scrolling

1. In Idle mode, press the **Menu** soft key to access Menu mode.
2. Scroll using the Navigation keys to reach a main menu, **Phone settings** for example. Press the **i** key to enter the menu.

Note: When you select a main menu, the left soft key allows you to quickly access one of its sub-menus.

3. If the menu contains sub-menus, **Language** for example, you can access them by scrolling using the Up or Down key and pressing the **i** key or **Select** soft key.

If the menu that you have selected contains further options, repeat this step.

4. To	Press the
scroll through the menus	Up or Down key, or use the Volume keys.
confirm the chosen setting	i key or Select soft key.
return to the previous menu level	C key or  soft key.
exit the menu without changing the settings	 key.

Using shortcuts

The menu items, such as menus, sub-menus and options, are numbered and can be accessed quickly by using their shortcut numbers. For the main menus, you can access any one of them by pressing the number keys (**1** to **9**) corresponding to their location on the screen.

Press the **Menu** soft key and enter the number of the menu you want.

Note: The numbers assigned to each menu are indicated on the list on page 62. They may not match the menu number on the phone, depending on the services supported by your SIM card.

Example: Accessing the **Language** menu.

1. Press the **Menu** soft key.
2. Press the **9** key for **Phone settings**.
3. Press the **5** key for **Language**.

The languages available display.

List of menu functions

The following list shows the menu structure and indicates the number assigned to each option and the page where you can find a description of each feature.

Note: If you use a SIM AT card that provides additional services, the **SIM AT** menu displays when you press the **Menu** soft key to enter Menu mode. For further details, see your SIM card instructions.

1. SIM AT*

2. Call records (see page 69)

- 2.1 Missed calls
- 2.2 Received calls
- 2.3 Dialed calls
- 2.4 Delete all
- 2.5 Call time
 - 2.5.1 Last call time
 - 2.5.2 Total sent
 - 2.5.3 Total received
 - 2.5.4 Reset timers
- 2.6 Call costs*
 - 2.6.1 Last call cost
 - 2.6.2 Total cost
 - 2.6.3 Max cost
 - 2.6.4 Reset counters
 - 2.6.5 Set max cost
 - 2.6.6 Price/unit

* Shows only if supported by your SIM card.

3. Network services (see page 74)

- 3.1 Call diverting
 - 3.1.1 Divert always
 - 3.1.2 Busy
 - 3.1.3 No reply
 - 3.1.4 Unreachable
 - 3.1.5 Cancel all
- 3.2 Call barring
 - 3.2.1 All outgoing
 - 3.2.2 International
 - 3.2.3 International except to home
 - 3.2.4 All incoming
 - 3.2.5 Incoming while abroad
 - 3.2.6 Cancel all
 - 3.2.7 Change barring password
- 3.3 Call waiting
 - 3.3.1 Voice calls
 - 3.3.2 Data calls
 - 3.3.3 Cancel all
- 3.4 Network selection
 - 3.4.1 Automatic
 - 3.4.2 Manual
- 3.5 Caller ID
 - 3.5.1 Default
 - 3.5.2 Hide number
 - 3.5.3 Send number
- 3.6 Closed user group
 - 3.6.1 Index list
 - 3.6.2 Outside access
 - 3.6.3 Default group
 - 3.6.4 Deactivate*

* Shows only if the Closed user group feature is active.

4. Sound settings (see page 83)

- 4.1 Ringtone
- 4.2 Ring volume
- 4.3 Alert type
- 4.4 Keypad tone
- 4.5 Message tone
 - 4.5.1 SMS tone
 - 4.5.2 SMS-CB tone
 - 4.5.3 MMS tone
 - 4.5.4 Repetition
- 4.6 Folder tone
- 4.7 Power on/off
- 4.8 Alert on call
- 4.9 Extra tones

5. Messages (see page 88)

- 5.1 Text messages
 - 5.1.1 Create
 - 5.1.2 Inbox
 - 5.1.3 Outbox
 - 5.1.4 Templates
 - 5.1.5 Settings
- 5.2 Multimedia messages
 - 5.2.1 Create
 - 5.2.2 Inbox
 - 5.2.3 Outbox
 - 5.2.4 Draft
 - 5.2.5 Templates
 - 5.2.6 Settings
 - 5.2.7 MMS profile
- 5.3 Push messages
 - 5.3.1 Inbox
 - 5.3.2 Receive
 - 5.3.3 Delete all
- 5.4 Delete all
 - 5.4.1 Text messages
 - 5.4.2 Multimedia messages
- 5.5 Voice mail
 - 5.5.1 Connect to voice server
 - 5.5.2 Voice server number

5. Messages (continued)

- 5.6 Broadcast messages
 - 5.6.1 Read
 - 5.6.2 Receive
 - 5.6.3 Channel list
 - 5.6.4 Language
- 5.7 Memory status
 - 5.7.1 Text messages
 - 5.7.2 Multimedia messages

6. Funbox (see page 113)

- 6.1 WAP browser
 - 6.1.1 Home
 - 6.1.2 Bookmarks
 - 6.1.3 http://
 - 6.1.4 WAP profile
 - 6.1.5 Clear cache
- 6.2 Games
- 6.3 Sounds
- 6.4 Images
- 6.5 Delete all
- 6.6 Memory status
 - 6.6.1 Games
 - 6.6.2 Sounds & images

7. Organiser (see page 126)

- 7.1 Alarm
 - 7.1.1 Once
 - 7.1.2 Daily
 - 7.1.3 Morning call
 - 7.1.4 Remove alarm
 - 7.1.5 Autopower
- 7.2 Calendar
- 7.3 Time & date
 - 7.3.1 Set time
 - 7.3.2 Set date
 - 7.3.3 World time
 - 7.3.4 Time format
 - 7.3.5 Display options
- 7.4 Calculator
- 7.5 To do list
- 7.6 Voice memo
 - 7.6.1 Record voice
 - 7.6.2 Voice list
 - 7.6.3 Delete all
 - 7.6.4 Memory status
- 7.7 Currency exchange

8. Camera (see page 138)

- 8.1 Take photos
- 8.2 My photos
- 8.3 Video
 - 8.3.1 Record
 - 8.3.2 Video clips
- 8.4 Memory status

9. Phone settings (see page 147)

- 9.1 Activate infrared
- 9.2 Display settings
 - 9.2.1 Wallpaper
 - 9.2.2 Front LCD display
 - 9.2.3 Menu style
 - 9.2.4 Back light
 - 9.2.5 Service light
 - 9.2.6 Graphic logo
- 9.3 Greeting message
- 9.4 Own number
- 9.5 Language
- 9.6 Security
 - 9.6.1 PIN check
 - 9.6.2 Change PIN
 - 9.6.3 Phone lock
 - 9.6.4 Change password
 - 9.6.5 Privacy
 - 9.6.6 SIM lock
 - 9.6.7 FDN mode*
 - 9.6.8 Change PIN2*
- 9.7 Extra settings
- 9.8 Short cut
- 9.9 Reset settings

* Shows only if supported by your SIM card.



SIM AT

This menu is available if you use a SIM AT card that provides additional services, such as news, weather, sports, entertainment, and location services.

Available services may vary, depending on your service provider's plans.


For further details, see your SIM card instructions or contact your service provider.

Call records

In this menu, you can view the:

- calls you missed, received or dialled.
- length of your calls.
- cost of your calls.*

Notes:

- You can access the numbers in the three types of call records by pressing the  key in Idle mode.
- The number of call records the phone can store may be different, depending on your SIM card.


Missed calls *(Menu 2.1)*

This menu lets you view the last 20 numbers of the calls you received, but did not answer.

The number or name, if available, displays together with the time and date when the call was received.

By pressing the **i** key or **Options** soft key, you can:

- edit the number, if available, and dial it or save it in Phonebook.
- delete the call from the list.

You can also dial the number by pressing the  key.

* Shows only if supported by your SIM card.


Received calls *(Menu 2.2)*

This menu lets you view the last 20 numbers of the calls you received.

The number or name, if available, displays together with the time and date when the call was received.

By pressing the **i** key or **Options** soft key, you can:

- edit the number, if available, and dial it or save it in Phonebook.
- delete the call from the list.

You can also dial the number by pressing the  key.


Dialled calls *(Menu 2.3)*

This menu lets you view the last 20 numbers you dialled.

The number or name, if available, displays together with the time and date when the call was made.

By pressing the **i** key or **Options** soft key, you can:

- edit the number and dial it or save it in Phonebook.
- delete the call from the list.

You can also dial the number by pressing the  key.

Delete all *(Menu 2.4)*

This menu allows you to delete all of the records in each call record. You can also delete all of your call records at one time.

1. To	Press the
select a call record to clear	Up or Down key. To delete all of your call records, select All calls .
place a check mark	i key.
remove a check mark	i key again.

2. Press the **Delete** soft key to delete the marked records.
3. When a confirmation message displays, press the **i** key or **Yes** soft key to confirm.
4. When the display confirms again, press the **i** key or **Yes** soft key.

Call time *(Menu 2.5)*

This menu lets you view the timers for calls you made and received.

Note: The actual time invoiced for calls by your service provider may vary, depending on network features, rounding-off for billing purposes and so on.

The following timers are available:

Last call time: shows the length of the last call.

Total sent: shows the total length of all calls you made since the timer was last reset.

Total received: shows the total length of all calls you received since the timer was last reset.

Reset timers: allows you to reset the call timers. You must first enter the phone password and then press the **i** key or **OK** soft key.

Note: The password is preset to "00000000." To change this password, see page 153.

Call costs *(Menu 2.6)*

This network feature lets you view the cost of calls. This menu may not be available depending on your SIM card.

The following options are available:

Last call cost: shows the cost of the last call you made.

Total cost: shows the total cost of all calls you made since the cost counter was last reset. If the total cost exceeds the maximum cost set in the **Set max cost** option, you can no longer make any calls until you reset the counter.

Max cost: shows the maximum cost set in the **Set max cost** option. See below.

Reset counters: allows you to reset the cost counter. You must first enter your PIN2 (see page 163) and then press the **i** key or **OK** soft key.

Set max cost: allows you to enter the maximum cost that you authorise for your calls. You must first enter your PIN2 (see page 163) and then press the **i** key or **OK** soft key.

Price/unit: allows you to set the cost of one unit; this price per unit is applied when calculating the cost of your calls. You must first enter your PIN2 (see page 163) and then press the **i** key or **OK** soft key.

Network services

These menu functions are network services. Please contact your service provider to check their availability and subscribe to them, if you wish.

Call diverting *(Menu 3.1)*

This network service enables incoming calls to be rerouted to a number that you specify.

Example: You may wish to divert your business calls to a colleague while you are on holidays.

To set your call diverting options:

1. Select a call diverting option by pressing the Up or Down key, and then press the **i** key or **Select** soft key.

The following options are available:

- **Divert always:** all calls are diverted.
- **Busy:** calls are diverted when you are already on another call.
- **No reply:** calls are diverted when you do not answer the phone.
- **Unreachable:** calls are diverted when you are not in an area covered by your service provider or when your phone is switched off.
- **Cancel all:** all call diverting options are cancelled.

2. Select the type of calls, voice or data, by pressing the Up or Down key, and then press the **i** key or **Select** soft key.

The current status displays. If the option has already been set, the number to which the calls are diverted displays.

3. To	Press the
activate call diverting	Activate soft key. Go to step 4.
change the number to be called	i key. Go to step 4.
deactivate call diverting	Remove soft key.

4. Enter the number to which the calls are to be diverted and press the **i** key or **OK** soft key.

To enter an international code, press the **0** key until the **+** sign displays.

5. If you selected **No reply** in step 1, select the length of time the network waits before diverting a call and press the **i** key or **Select** soft key.

The phone sends your settings to the network and the network's acknowledgement displays.

Call barring *(Menu 3.2)*

The call barring network service allows you to restrict your calls.

To set your call barring options:

1. Select a call barring option by pressing the Up or Down key, and then press the **i** key or **Select** soft key.

The following options are available:

- **All outgoing:** calls cannot be made.
- **International:** international calls cannot be made.
- **International except to home:** when abroad, calls can be made only to numbers within the current country and to your home country, which is the country where your home network provider is located.
- **All incoming:** calls cannot be received.
- **Incoming while abroad:** calls cannot be received when you are using your phone outside of your home service area.
- **Cancel all:** all call barring settings are deactivated; calls can be made and received normally.
- **Change barring password:** you can set and change the call barring password obtained from your service provider using this option. You must enter the current password before you can specify a new one.

2. Select the type of calls, voice or data, by pressing the Up or Down key, and then press the **i** key or **Select** soft key.
3. Press the **i** key or **Activate** soft key to confirm your settings.
4. Enter your call barring password supplied by your service provider.

The phone sends your settings to the network and the network's acknowledgement displays.

To deactivate specific call barring settings:

1. Select the call barring option to be deactivated.
2. Select the type of calls to which this option applies.
3. Press the **i** key or **Deactivate** soft key.
4. Enter your call barring password supplied by your service provider.

The phone sends your settings to the network and the network's acknowledgement displays.

Call waiting *(Menu 3.3)*

This network service informs you when someone is trying to reach you during another call.


You can specify individual call waiting options for voice calls and/or data calls:

To set your call waiting options:

1. Select the type of calls, voice or data, to which you want to apply the call waiting option by pressing the Up or Down key, and then press the **i** key or **Select** soft key.

The screen informs you whether call waiting is activated or deactivated.

2. You can activate or deactivate the Call waiting feature as necessary by using the **Activate** or **Deactivate** soft key respectively.

To return to the previous screen, press the  soft key.

You can also deactivate all call waiting settings by selecting the **Cancel all** option.

Network selection *(Menu 3.4)*

The Network selection feature enables you to automatically or manually select the network used when roaming outside of your home area.

Note: You can select a network other than your home network only if there is a valid roaming agreement between the two.

To automatically or manually select the network to be used when roaming:

1. When **Network selection** displays, press the **i** key or **Select** soft key.
2. Press the Up or Down key until the appropriate option highlights and then press the **i** key or **OK** soft key.

If you select **Automatic**, you are connected to the first available network when roaming.

If you select **Manual**, go to step 3.

3. Press the Up or Down key until the network you want highlights and then press the **i** key or **OK** soft key. The phone will scan for that network and you will be connected.

Caller ID *(Menu 3.5)*

You can prevent your phone number from being displayed on the phone of the person being called.

Note: Some networks do not allow the user to change this setting.

The following options are available:

Default: the default setting provided by the network is used.

Hide number: your number does not display on the other person's phone.

Send number: your number is sent each time you make a call.

Closed user group *(Menu 3.6)*

This network service allows incoming and outgoing calls to be restricted to a selected user group. You can create up to ten user groups.

For details about how to create and use a closed user group, contact your service provider.

Example: A company lends SIM cards to its employees and wants to restrict outgoing calls to members of the same team.

Activating a closed user group

If you select the **Closed user group** menu, you can enter the CUG function. You can access the following options after pressing the **i** key or **Select** soft key:

Index list: lets you list, add, or delete CUG index numbers.

If there is no CUG index stored, you are prompted to add a new index when you select this option. Once you have added a CUG index, the list of current CUG indexes appears.

Add a new CUG index as advised by your service provider, or delete a group.

To	Press the
scroll through existing CUG indexes	Up or Down key.
add a new CUG index	i key or Options soft key, select the Add option and enter the index.
delete a CUG index	i key or Options soft key and select the Delete option.
activate a CUG index	i key or Options soft key and select the Activate option.

Outside access: lets you enable or disable calls to numbers other than those in the Closed user group. This feature depends on the nature of your CUG subscription. Please check with your service provider.

Default group: you may set a default CUG with your service provider. If you have done so, you can enable the **Default group** option on your phone. When making a call, you are given the option of using your default CUG, instead of selecting one from the list.

Deactivate: deactivates the CUG function. This menu appears only when the default group is enabled or a CUG index is selected.

Sound settings

You can use the Sound settings feature to customise various settings, such as the:

- ring melody, volume and type.
- sounds made when you press a key, receive a message, open/close the phone or switch your phone on or off.
- alert tone made every minute during a call, when you make an error, or when your call is connected to the system.

Note: When the phone is in Silent mode (see page 29), you cannot change the sound settings.

Ringtone *(Menu 4.1)*

This menu allows you to select a ring melody.

You can select between many different melodies. If you have downloaded sounds from the Internet or the optional EasyGPRS programme, you can use them in this menu.

Ring volume *(Menu 4.2)*

This menu allows you to adjust the ring volume to one of five levels.

Use the Up and Down keys or the Volume keys on the left side of the phone to increase or decrease the volume.

Alert type *(Menu 4.3)*

This menu allows you to specify how you are to be informed of incoming calls.

The following options are available:

Light only: the service light flashes; the phone neither rings nor vibrates.

Melody: the phone rings using the selected ring tone.

Vibration: the phone vibrates but does not ring.

Vibra+melody: the phone first vibrates three times and then starts ringing.

Keypad tone *(Menu 4.4)*

This menu allows you to select the tone that the phone sounds when you press a key.

To turn the sound off, select **Off**.

Message tone *(Menu 4.5)*

This menu allows you to select how the phone informs you that a new message has been received.

SMS tone *(Menu 4.5.1)*

The following options are available for alerting you to new SMS messages:

Off: the phone does not use an SMS tone.

Light only: the service light flashes.

Vibration: the phone vibrates.

Single beep: the phone beeps once.

SMS tone X: the phone uses one of several SMS tones.

SMS-CB tone *(Menu 4.5.2)*

The following options are available for alerting you to new cell broadcast (CB) messages:

Off: the phone does not use a CB tone.

Light only: the service light flashes.

Vibration: the phone vibrates.

Single beep: the phone beeps once.

SMS-CB tone X: the phone uses one of several CB tones.

MMS tone *(Menu 4.5.3)*

The following options are available for alerting you to new MMS messages:

Off: the phone does not use an MMS tone.

Light only: the service light flashes.

Vibration: the phone vibrates.

Single beep: the phone beeps once.

MMS tone X: the phone uses one of several MMS tones.

Repetition *(Menu 4.5.4)*

This menu allows you to specify how often the phone informs you of a new message. The following options are available:

Once: the phone alerts you once.

Periodic: the phone alerts you every 2 minutes.

Folder tone *(Menu 4.6)*

This menu allows you to select the tone that the phone sounds when you open or close the phone. Select either **Future** or **Crystal**.

To turn the sound off, select **Off**.

Power on/off *(Menu 4.7)*

This menu allows you to select the melody that the phone sounds when it is switched on or off. Select either **Classical** or **Cheerful**.

To turn the sound off, select **Off**.

Alert on call *(Menu 4.8)*

This menu allows you to select whether or not the phone informs you when you receive a new message or when the time for an alarm comes during a call.

The following options are available:

Off: the phone doesn't actively alert you to incoming messages or alarms. It only displays the corresponding notification.

On: the phone alerts you with a beep and displays the corresponding notifications.

Extra tones *(Menu 4.9)*

You can customise additional tones for the phone.

To turn a given tone	Press the
on	i key or Mark soft key. A check mark displays in front of the option.
off	i key or Unmark soft key. The check mark no longer displays.

The following options are available:

Error tone: sets whether or not the phone informs you when you make a mistake.

Minute minder: sets whether or not the phone beeps every minute during an outgoing call to keep you informed of the length of your call.

Connect tone: sets whether or not your phone beeps when your call is connected to the system.


Messages

Using the **Messages** menu, you can use various message features, such as:

- short text messages
- multimedia messages
- WAP push messages
- voice mail
- cell broadcast messages

Text messages *(Menu 5.1)*

Short Message Service (SMS) allows you to send and receive short text messages to and from other GSM mobile phones. In addition, your phone supports the Enhanced Messaging Service (EMS), which enables you to include simple pictures, melodies, and animated images in your messages. To use this feature, you must subscribe to your service provider's message service.

When the Text Message icon () appears, you have received new text messages. If the memory is full, an error message displays and you cannot receive any new messages. Use the **Delete** option in each message box to delete the obsolete ones.

Create *(Menu 5.1.1)*

In this menu, you can write and send text messages.

Note: When you add media items to a message, the number of characters you are allowed to enter decrease.

Creating a simple text message

1. Create your message.

Note: For further details about entering characters, see page 46.

2. When you finish entering the message, press the **i** key or **Options** soft key. The following options are available:

- **Send only:** allows you to send the message. The message is deleted after sending.
- **Save and send:** allows you to save a copy of the message and then send the message. You can read the message in your Outbox.
- **Save only:** allows you to save the message so that it can be sent later. You can read the message in your Outbox.
- For further details about **Text formatting**, **Add content**, **Add templates**, **Add from phonebook**, **Add from bookmarks** and **Language** options, see page 90.

3. Select **Send only** or **Save and send**, and press the **i** key or **Select** soft key.

If you want to just save the message, select **Save only**. After saving the message, the phone returns to the Text messages menu screen.

4. If you select a save option, select the memory location by pressing the Up and Down keys and press the **i** key or **OK** soft key.
5. Enter a destination number and press the **i** key or **OK** soft key.

The message is sent.

Note: If the phone fails to send the message, it will ask you if you want to retry. Press the **i** key or **Yes** soft key to confirm. Otherwise, press the **No** soft key to return to the Create screen.

Creating a text message using options

1. Create a message.
2. Press the **i** key or **Options** soft key.
3. Select one of the following options by using the Up and Down keys and pressing the **i** key or **Select** soft key:

- **Text formatting:** allows you to format the style of the text.

For the **Size** attribute, **Normal**, **Large**, and **Small** sizes are available.

For the **Bold**, **Italic**, **Underline**, and **Strikethrough** attributes, select **On** or **Off**.

These attributes can be combined.

- **Add content:** allows you to add a sound, melody, picture, or animated image to the message. Select the category of the object to be added. In each category, you can select from the various factory-set items or select an item received from other sources, such as the Internet or other phones.

- **Add templates:** allows you to apply one of the preset message templates to the text. Select one of five items stored in the **Templates** menu (**Menu 5.1.4**). For further details, see page 94.
 - **Add from phonebook:** allows you to add a Phonebook entry to your message. Select one from the list.
 - **Add from bookmarks:** allows you to add a web page's address stored in your Bookmarks list. Select one from the list.
 - **Language:** allows you to change the language to be used in T9 input mode. Select the language you want to use.
4. Complete the message, and send or save it by following the procedure from step 2 on page 89.

Inbox *(Menu 5.1.2)*

This message box is used to store messages that you have received.

When you enter this menu, the list of messages in the box displays with the senders' phone numbers or names, if available in your Phonebook.

1. Select a message from the list and press the **i** key or **View** soft key to read the message contents.
2. To scroll through the contents, press the Up or Down key.
3. To scroll to the previous or next message, press the * or # key.

While reading a message, you can access the following options by pressing the **i** key or **Options** soft key:

Delete: allows you to delete the message.

Send: allows you to forward the message. For further details about how to send a message, see page 89.

Text reply: allows you to send a reply to the sender by sending a text message.

Call back: allows you to call the sender.

Save address: allows you to extract the sender's number and URL, e-mail addresses or phone numbers from the message text.

Move to phone: allows you to move the message from the SIM card to the phone's memory. This option is only available when you select a message stored in the SIM card.

Move to SIM: allows you to move the message from the phone's memory to the SIM card. This option is only available when you select a message stored in the phone's memory.

Select content: allows you to save media objects, such as sounds or images, from the message into your phone. You can use the objects when writing a message. For details, see page 90.

Outbox *(Menu 5.1.3)*

This message box is used to store messages that you have sent or will send.

When you enter this menu, the list of messages in the box displays with the recipients' phone numbers or names, if available in your Phonebook.

1. Select a message from the list and press the **i** key or **View** soft key to read the message contents.
2. To scroll through the contents, press the Up or Down key.
3. To scroll to the previous or next message, press the * or # key.

While reading a message, you can access the following options by pressing the **i** key or **Options** soft key:

Delete: allows you to delete the message.

Send: allows you to send/resend the message. For further details, see page 89.

Save address: allows you to extract the destination number and URL, e-mail addresses or phone numbers from the message text.

Move to phone: allows you to move the message from the SIM card to the phone memory. This option is only available when you select a message stored in the SIM card.

Move to SIM: allows you to move the message from the phone memory to the SIM card. This option is only available when you select a message stored in the phone's memory.

Select content: allows you to save media objects, such as sounds or images, from the message into your phone. You can use the objects when writing a message. For details, see page 90.

Templates *(Menu 5.1.4)*

Using this menu, you can preset a maximum of five messages that you use most frequently.

Select an empty location or the message template you want and press the **i** key or **Options** soft key.

The following options are available:

Edit: allows you to write a new message template or edit an existing message template.

Note: For further details about how to enter characters, see page 46.

Send: allows you to retrieve the message template. Once you have completed the message, you can send, save and send, or simply save it. For further details about how to send a message, see page 89.

Delete: allows you to delete the message template. You are asked to confirm the deletion by pressing the **i** key or **Yes** soft key.

Settings *(Menu 5.1.5)*

In this menu, you can set up default message information. A setting group is a collection of settings required to send messages. The number of setting groups available depends on the capacity of your SIM card.

Notes:

- The setting options available in this menu may vary, depending on your service provider.
- The last setting you accessed is automatically activated for sending subsequent messages.

Setting x (where **x** is the setting group number): each group has its own sub-menu.

Setting name: allows you to give a name to the setting group currently being defined.

Service centre: allows you to store or change the number of your message centre, which is required when sending messages. You must obtain this number from your service provider.

Default destination: allows you to store a default destination number. The number automatically displays on the Destination screen when you create a message.

Default type: allows you to set the default message type to **Text**, **Fax**, **Email**, or **Paging**. The network can convert the messages into the selected format.

Validity period: allows you to set the length of time your text messages are stored in the message centre while attempts are made to deliver them.

Common settings: The following options are available:

Reply path: allows the recipient of your message to send you a reply through your message centre, if your network supports this service.

Delivery reports: allows you to activate or deactivate the report function. When this function is activated, the network informs you whether or not your message has been delivered.

Bearer selection: allows you to select either **GSM** or **GPRS preferred**, depending on your network.

Character support: allows you to select a character type from **GSM-alphabet**, **Uni-code**, or **Automatic**. If you select **Uni-code** and your recipient's phone does not support it, your recipient may not be able to read your message.

Multimedia messages *(Menu 5.2)*

This menu allows you to use the Multimedia Message Service.

Multimedia Message Service (MMS) is a messaging service very similar to Short Message Service (SMS). It provides automatic and immediate delivery of personal multimedia messages from phone to phone or from phone to e-mail.

In addition to the familiar text content of text messages, multimedia messages can contain images, graphics, voice, and audio clips. An MMS message is a multimedia presentation in a single file. It is not a text file with attachments.

Using the MMS feature, your phone can receive and send multimedia messages that contain multimedia files, such as photos, sounds, and images you downloaded from the Internet and voice memos you recorded. This function is available only if it is supported by your service provider. Only phones that offer multimedia messaging features can receive and display multimedia messages.

Create *(Menu 5.2.1)*

This menu allows you to create a new multimedia message and send it to one or multiple destinations.

Creating and sending a multimedia message

1. Enter the subject of your message and press the **i** key or **Next** soft key.

For further details about entering characters, see page 46.

2. When **Add here** highlights, press the **i** key or **Options** soft key and add the message contents using one of the following options:

- **Add text:** enter the message text and press the **i** key or **OK** soft key.
- **Add photo:** allows you to add a photo you took using the camera on your phone. Select **Take photo** to take a new photo, or **Select photo** to add one of the photos stored in the phone's memory. For further details about using the camera, see page 138.
- **Add picture:** allows you to add a picture stored in the **Images** folder (**Menu 6.4**). Choose a picture and press the **i** key. You can add some downloaded images if they are in the correct format and your service provider supports them.
- **Add sound:** allows you to add a sound file. Select **Record voice** to record a new voice memo, or **Voice list** to add an existing voice memo, or **Sound list** to add one of the sounds in the **Sounds** folder (**Menu 6.3**). You can add some downloaded sounds if they are in the correct format and your service provider supports them.

- **Send:** allows you to send the message. Use this option when you finish creating the message.
- **Save:** saves the message in the **Draft (Menu 5.2.4)** or **Templates (Menu 5.2.5)** box for later use.
- **Settings:** allows you to change the message settings. For further details about each setting option, see page 106. After changing the settings, you need to press the **C** key or  soft key to go back to the options screen.
- **Add destination:** allows you to enter destination addresses. See steps 6 to 11 on page 99.
- **Preview:** shows your message.

Note: You can add text, an image and a sound once for each page.

3. Repeat step 2 until you have finished creating your message.
4. If you want to change the added items, press the Up or Down key to highlight one and press the **i** key or **Options** soft key to display the Options list.

Note: Available options are different, depending on whether the item you select on the message screen is text, an image, a sound, or the Page field.


The following options are available:

- **Edit text/picture/sound:** allows you to change the text or replace the image or sound with another one.

- **Add page:** allows you to add up to 5 pages. After adding pages, you can move to each page using the Left or Right key on the message screen. After you add a page, the display shows you the current page number and memory space used for the page.
 - **Delete:** deletes the item from your message.
 - **Duration:** allows you to set when and how long text, an image or a sound displays on the message presentation screen. When the message is opened, the display scrolls to the next item after a specified time in **Set duration**.
 - **Send:** allows you to send the message.
 - **Save:** saves the message in the **Draft (Menu 5.2.4)** or **Templates (Menu 5.2.5)** box for later use.
 - **Settings:** allows you to change the message settings. For further details about each setting option, see page 106.
 - **Add destination:** allows you to enter destination addresses. See steps 6 to 11 on page 99.
 - **Preview:** shows your message.
5. When you have finished creating the message, select **Send** from the options and press the **i** key or **Select** soft key.
 6. Select a destination type (**To**, **Cc**, or **Bcc**) and press the **i** key or **Select** soft key.

7. Choose one of the following options and press the **i** key or **Select** soft key:
 - **Phone number**: allows you to enter the phone number you want.
 - **E-mail**: allows you to enter the e-mail address of the recipient.
 - **Phonebook**: allows you to retrieve a number from your Phonebook.
8. Enter a number or an e-mail address, or select a number from Phonebook.
9. When the correct number or address displays, press the **i** key or **OK** soft key.
10. To add a destination, press the **i** key or **Select** soft key when **Add destination** highlights. Repeat from step 7.

If you want to edit the destinations, select one and press the **i** key or **Options** soft key. You can change or delete it.

11. To enter additional numbers or addresses to the other destination types, press the **C** key or  soft key and repeat steps 6 through 10.


You can enter up to 10 destinations each for **To**, **Cc**, and **Bcc**.

12. When you have finished entering the destinations, select **Send message** and press the **i** key or **Select** soft key.


Your phone sends the message.

Inbox *(Menu 5.2.2)*

Viewing a message when you receive it

When a new multimedia message comes in, the display shows the MMS Message icon () and a text notification along with the sender's number.

1. Press the **i** key or **View** soft key to view brief information about the message, such as the sender's number, the message size and the subject.

If you want to view the message later in the Inbox, press the **C** key or  soft key.


2. To scroll through the message information, press the Up or Down key.

You can use the following options by pressing the **i** key or **Options** soft key:

- **Retrieve:** retrieves the message from the MMS server.
- **Delete:** deletes the message.
- **More properties:** shows you detailed information about the message.








3. To read the message, press the **i** key.

Your phone retrieves the message contents from the server and displays it.

4. To scroll through the message, press the Up or Down key.
5. When you have finished, press the  key.

Viewing a message from the Inbox

When you access the **Inbox** menu, the list of multimedia messages or notifications you've received displays with the senders' phone numbers (if they are available in your Phonebook) or subjects. The icons on the left tell you the status of the messages.

- : MMS notifications that have been opened.
- : MMS notifications that are unopened.
- : MMS notifications you requested from the MMS server.
- : MMS notifications that the phone is retrieving the messages from the MMS server.
- : MMS notifications of which the phone couldn't retrieve the message.
- : Messages that have been opened.
- : Messages that have not been opened.

1. Select a message on the list and press the **i** key or **View** soft key.

The message displays.

2. Press the **i** key or **OK** soft key to go to the message view screen.

Or, the display automatically switches to the screen after a few seconds.

3. To scroll through the message, press the Up or Down key.

If the message has more than one page, you can scroll through the pages by using the Left and Right keys.

While viewing a message, you can access the Messages options by pressing the **i** key or **Options** soft key.

If you are viewing a new message, the options are the same as when you view a message at the time of you receive it. See page 101.

When you are reviewing a message retrieved from the MMS server, the following options are available:

Delete: deletes the message.

Reply: allows you to reply to the sender by sending a text or multimedia message.

Callback: allows you to call the sender.

Save address: allows you to extract the sender's number or e-mail address and URL, e-mail addresses or phone numbers from the message text.

Forward: allows you to forward the message to another person. When the message contains media contents locked by your service provider, this option is not available.






Save picture: allows you to save an image from the message into your phone. Pictures are stored in the **Images** folder (**Menu 6.4**).

Save sound: allows you to save a sound from the message into the **Sounds** folder (**Menu 6.3**).

Properties: shows you information about the message, such as the message status, subject, sender's e-mail address or phone number, message size, priority, and the time and date the message was received.

Outbox *(Menu 5.2.3)*

When you access this menu, the list of the multimedia messages you have sent or saved displays. The icons on the left tell you the status of the messages.

- : Messages currently being sent
- : Messages sent
- : Messages your phone couldn't send
- : Messages to be sent
- : Messages deferred

1. Select a message on the list and press the **i** key or **View** soft key.

The message displays.

2. Press the **i** key or **OK** soft key to go to the message view screen.

Or, the display automatically switches to the screen after a few seconds.

3. To scroll through the message, press the Up or Down key.

If the message has more than one page, you can scroll through the pages by using the Left and Right keys.

While viewing a message, you can access the following options by pressing the **i** key or **Options** soft key:

Delete: deletes the message.

Save address: allows you to extract the destination numbers or e-mail addresses and URL, e-mail addresses or phone numbers from the message text.

Send: allows you to send/resend the message.

Edit: allows you to change the message contents, sound, picture or text.

Properties: shows you information about the message, such as the message status, subject, sender and recipients' e-mail addresses or phone numbers, message size, priority and the time and date the message was sent.

Draft *(Menu 5.2.4)*


After creating a multimedia message, you can store it in this message box for later sending.

For further details about viewing a message, see "Outbox" on page 104.

Templates *(Menu 5.2.5)*

This menu stores messages you saved as templates so that you can use them to make new messages.

1. Scroll through the template list using the Up or Down key.
2. When the message template you want highlights, press the **i** key or **View** soft key.

3. Press the **i** key or **OK** soft key to use the following options, or the display automatically shows the options after a specified time:
 - **Edit**: allows you to send a message using the template. For further details about how to send a message, see page 97.
 - **Delete**: allows you to delete the message template. You are asked to confirm the deletion by pressing the **i** key or **Yes** soft key.
4. Press the  key to return to Idle mode.

Settings *(Menu 5.2.6)*

You can change the default settings for sending or receiving multimedia messages.

The following options are available:

Delivery report: when this option is enabled, the network informs you whether or not your message has been delivered.

Read reply: when this option is enabled, your phone sends a request for a reply along with your message to the recipient.

Auto download: you can set whether or not your phone retrieves new incoming messages from the MMS server without notifications.

Off: you need to manually download new messages by using the **Retrieve** option.

On: the phone automatically retrieves new messages from the server. As soon as you receive a message you can use more options while you are reading. See page 103 for details about the options.

Off when roaming: the phone automatically downloads new messages unless you are roaming on another network or in another country.

Message acceptance: you can specify the category of messages you want to receive.

Hide ID: when this option is enabled, your phone number does not display on the recipient's phone.

Validity period: you can select the length of time your messages are stored at the message centre after they are sent.

Delivery time: you can set a time delay before the phone sends your messages.

Priority: you can select the priority level of your messages.

Report allowed: when this option is enabled, the sender of an incoming message receives a delivery report from the network.

Page duration: you can set how long one page of an outgoing message displays on the message presentation screen. After a specified time, the display automatically scrolls to the next page.

MMS profile *(Menu 5.2.7)*

In this menu, you can configure various network settings that are required when you send or receive multimedia messages.

Notes:

- The last profile you accessed is automatically activated for sending subsequent messages.
- If you change the MMS settings without first checking with your service provider, the MMS feature may not work properly.

The following options are available for each profile:

Profile name: enter a name that you wish to assign to the MMS server.

Connection URL: enter the address of your MMS server.

Security: select a data transmission mode. Choose **Secure** to protect your data against unauthorised access; otherwise, select **Non-secure**.

IP address: enter the gateway address required to connect to the MMS server.

User name: enter the user ID required to connect to the MMS server.

Password: enter the password required to connect to the MMS server.

APN: enter the access point name used for the address of the MMS server.

For further details, contact your service provider.

Push messages *(Menu 5.3)*

In this menu, you can receive and access web messages from the server.

The following options are available:

Inbox: allows you to read the messages received from the web server.

Receive: allows you to set whether or not your phone receives web messages. Select **Always** to receive web messages or **Never** to reject web messages.

Delete all: allows you to delete all of the web messages.

Delete all *(Menu 5.4)*

This menu allows you to delete all of the messages in each message box separately, and all broadcast messages. You can also delete all of your messages at one time.

1. Select a message type and press the **i** key or **Select** soft key.

2. To	Press the
select a message box to clear	Up or Down key. To delete all of your messages, select All messages .
place a check mark	i key.
remove a check mark	i key again.

3. Press the **Delete** soft key to delete the marked messages.
4. When a confirmation message displays, press the **i** key or **Yes** soft key to confirm.
5. When the phone asks for confirmation again, press the **i** key or **Yes** soft key.

Voice mail *(Menu 5.5)*

This menu allows you to access your voice mailbox, if your network supports this service.

The following options are available:

Connect to voice server: before using the Voice mail feature, you must enter the voice server number obtained from your service provider. You can then select this option and press the **i** key or **OK** soft key to listen to your messages.

You can quickly connect to the voice server by pressing and holding the **1** key in Idle mode.

Voice server number: allows you to change the voice mail server number, if necessary.

To	Press the
enter the server number	corresponding numeric keys.
correct a digit	C key.
move the cursor to the left or right without clearing a digit	Left or Right key.

Note: Voice mail is a network feature. Please contact your service provider for further details.

Broadcast messages *(Menu 5.6)*

This network service allows you to receive text messages on various topics, such as the weather or traffic. Cell Broadcast (CB) messages display as soon as they are received, provided that:

- the phone is in Idle mode.
- the **Receive** option is set to **Enable**.
- the message channel is currently active on the channel list.

The following options are available:

Read: lets you view the received message.

The **Volatile** box displays messages from the network, but loses its contents as soon as the phone is switched off. Scroll through the message by using the Up and Down keys.

You can save a CB message in the **Archive** box for later retrieval. When a text notification appears, press the **Options** soft key or **i** key and select **Save**.

Receive: allows you to enable or disable the reception of broadcast messages.

Channel list: allows you to indicate the channels from which you wish to receive broadcast messages. The following options are available:

Select: use to enable or disable channels on the list by marking or unmarking them, respectively. A check mark displays in front of each selected channel.

Add channel: use to enter the ID and title for a new channel.

Messages

Delete: use to remove a channel from the list.

Edit: use to change the ID and title of an existing channel.

Language: allows you to select your preferred language in which to display cell broadcast messages.

Please contact your service provider for further details.

Memory status *(Menu 5.7)*

You can check the amount of the memory being used and the memory remaining for messages.

Text messages: shows the number of messages currently stored and the total number of messages you can store in the SIM, Phone and CB memories. If necessary, press the Up or Down key to scroll through the screen.

Multimedia messages: shows the total space, including the free and used space, and how much space is currently occupied by each message box. Press the Up or Down key to scroll through the screen.

The **Funbox** menu contains several fun options.

WAP browser *(Menu 6.1)*

Your phone is equipped with a WAP (Wireless Application Protocol) browser to allow you to access and navigate the Wireless Web using your phone.

Home *(Menu 6.1.1)*

Selecting this menu connects the phone to the network and loads the homepage of the Wireless Web service provider. You can also press the **i** key in Idle mode to launch the browser.

The contents of the WAP Browser startup homepage depends on your Wireless Web service provider. To scroll through the screen, use the Up or Down keys.

Note: To go to the startup homepage from any other screen in the WAP browser, use the **Home** option. For further details about the WAP Browser menus, see page 115.

Exiting the WAP browser

To exit the browser at any time, simply press and hold the **⏏** key.

Navigating the WAP browser

To	Press the
scroll through the browser items	Up or Down key.
select a browser item	i key, or press the Options soft key and then select Select .
select a numbered item	corresponding number key.
return to the previous page	C key, or press the Options soft key and then select Back .
access the Bookmarks list	Menu soft key and select Bookmarks . See page 117.
return to the startup homepage	Menu soft key and select Home . For further details about this option, see page 115.

Entering text in the WAP browser

When you are prompted to enter text, the currently active text input mode is indicated on the screen.

To change the text input mode, press the **i** key one or more times.

The following modes are available:

Upper-case character mode (A): allows you to enter upper-case English characters.

Lower-case character mode (a): allows you to enter lower-case English characters.

Note: You can also enter special characters in Upper-case or Lower-case character mode. For details about available characters, see page 50.

T9 mode (T9): allows you to enter English characters by pressing one key per letter. In this mode, you can use only the **0** key to display alternative words. To change the case, press the ***** key.

Number mode (1): allows you to enter numbers.

Selecting and using browser menu options

Various menu options are available when you are using the WAP browser to navigate the Wireless Web.

To access a menu option:

1. Press the **Menu** soft key.
A menu list displays.
2. Highlight a menu by pressing the Up or Down key.
3. Select an option by pressing the **i** key or **Select** soft key.
4. If necessary, select a secondary option using the Up or Down keys, and press the **i** key or **Select** soft key to confirm.

Note: The menus may vary, depending on your version of the WAP browser.

The following options are available:

Reload: reloads the current page.

Home: takes you back at any time to the home page of the Wireless Web service provider.

Go to URL: allows you to manually enter the URL address of a Web page. After entering an address, press the **OK** soft key to go there directly.

Show URL: displays the URL address of the Web page to which you are currently connected. It also enables you to set the current site as the startup home page.

To	Press the
set the current page as your startup home page	i key or Options soft key or and select the Save to home option.
set a bookmark for the current page	i key or Option soft key and select the Save to bookmark option.
cancel your setting	C key or Back soft key.

Clear cache: deletes the information stored in the cache. The cache stores the most recently accessed Web pages.

Inbox: allows you to read messages received from a web server.

Show images: shows the images on the current web page in order. Press the **Next** soft key or **i** key to view the next images.

Bookmarks *(Menu 6.1.2)*

This menu allows you to store up to 16 URL addresses.

Using this menu, you can access one of the default web sites or store the address of your favourite web site.

To store your favourite web site:

1. Select an empty location and press the **Edit** soft key or **i** key.
2. Enter the address you want to store and press the **Enter** soft key or **i** key.

For further details about how to enter characters, see page 46.

3. Enter a name for the item and press the **Enter** soft key or **i** key.

Once you have stored a Bookmark item, you can use the following options when you press the **Options** soft key or **i** key:

Go to URL: takes you to the corresponding web site.

Edit: allows you to change the address and the name of the item.

Delete: allows you to delete the item.

http:// (Menu 6.1.3)

This menu allows you to manually enter the URL address of a Web site that you wish to access.

For further details about how to enter characters, see page 46.

WAP profile (Menu 6.1.4)

This menu allows you to set up five proxy servers for the WAP browser. Contact your service provider for details about your WAP profile options.

For each server, the following options are available:

Profile name: enter a name that you wish to assign to the HTTP server.

Homepage URL: set the address of your startup homepage. When the default homepage displays, you can delete it using the **C** key and enter your own choice.

Security: select a data transmission mode. Choose **Secure** to protect your data against unauthorised access; otherwise, select **Non-secure**.

Bearer: select a bearer to be used for each type of network address accessed; **GPRS** or **Data**.

The remaining options depend on the Bearer setting.

When the bearer is set to **GPRS**:

IP address: enter the WAP gateway address required to connect to the Internet.

User name: enter the User ID required to connect to the GPRS network.

Password: enter the password required to connect to the GPRS network.

APN: enter the access point name used for the address of the GPRS network gateway.

When the bearer is set to **Data**:

IP address: enter the WAP gateway address required to connect to the Internet.

User name: enter the PPP server login ID.

Password: enter the PPP server password.

Dial-up number: enter the PPP server phone number.

Data call type: select a data call type; **Analogue** or **ISDN**.

Note: The WAP browser settings may vary, depending on the service provider. Contact your service provider for further details.

Clear cache *(Menu 6.1.5)*

You can clear the information stored in the cache, the phone's temporary memory in which the most recently accessed Web pages are stored.

Press the **i** key or **Yes** soft key to confirm the deletion. Otherwise, press the **No** soft key.

Games *(Menu 6.2)*

You can download MIDlets (Java applications that run on mobile phones) from various sources using the WAP Browser and store them in your phone.

When you access the **Games** menu, the list of the default games appears. Once you have downloaded games, they are added to the list.

Note: Java services may not be available, depending on your service provider.

Launching a MIDlet


Note: The procedure explained below are for the default games. For downloaded games, the procedure may be different.

1. Scroll to the MIDlet you want on the Games list and press the **i** key.
2. On the startup screen of the MIDlet, scroll to an option using the Navigation keys or the **2** and **8** keys.

The following options are available:

- **START GAME:** starts a new game.
- **CONTINUE:** allows you to continue the last game you played.
- **HIGH SCORE:** shows the high score table. This option may not be available for some games.
- **HOW TO PLAY:** shows how to play the game and the key functions for the game.
- **OPTION:** allows you to switch the game sound on or off.

3. Press the **5** key or **i** key to confirm your selection.

While you are playing a game, to	Press the
adjust the sound volume	Volume keys.
stop the game and return to the startup screen	C key.
exit the game	 key.


Viewing MIDlet information

1. Scroll to the MIDlet you want and press the **Info** soft key.

The display shows information about the MIDlet, such as the file size, application version, and its vendor.

2. To scroll to other MIDlet information, press the Left or Right key.
3. If you want to delete the MIDlet, press the **Delete** soft key and then press the **i** key or **Yes** soft key to confirm the deletion.

Note: When you select default games from the list, the **Delete** option is not available.

4. To exit and return to the Games list, press the **C** key or  soft key.

Entering text

If you need to enter text while using a MIDlet, you can use the following input modes:

Upper-case character mode (A): allows you to enter upper-case English characters.

Lower-case character mode (a): allows you to enter lower-case English characters.

Number mode (1): allows you to enter numbers.

Symbol mode: allows you to enter symbols. After highlighting a symbol by pressing the Navigation keys, press the **i** key to insert it.

T9 mode (T9): allows you to enter English characters by pressing one key per letter. In this mode, you can change the case by pressing the **O** key.

To change the text input mode, press the ***** key until the appropriate indicator appears on the soft key area of the display.

Changing the DNS settings

The DNS (Domain Name Server) is the server that assigns the Java server domain name to an IP address. The DNS setting is preset at the factory, but sometimes you may need to change it at your service provider's instructions.

1. Scroll to **Setting** on the Games list and press the **i** key or **Select** soft key.
2. Enter the primary address using the number keypad and press the **i** key or **OK** soft key.
3. Enter the secondary address and press the **i** key or **OK** soft key.

Sounds *(Menu 6.3)*

In this menu, you can view the list of sounds downloaded from a web server or received in multimedia messages. You can set the downloaded sounds as the current ring tone or send them to other phones.

Scroll to the sound you want on the sound list and press the **i** key or **Play** soft key.

By pressing the **i** key or **Options** soft key, you can use the following options:

Rename: allows you to change the name of the sound.

Delete: deletes the sound.

Set as ringtone: sets the sound as your ring tone.

Images *(Menu 6.4)*

In this menu, you can view the list of photos downloaded from a web server or received in messages. You can set the downloaded photos as the current background image or send them to other phones.

If you set a photo as your wallpaper, it displays as **My photo** on the list.

Scroll to the image you want on the Images list and press the **View** soft key or **i** key.

By pressing the **Options** soft key, you can use the following options:

Rename: allows you to change the name of the image.

Delete: deletes the image.

Set as wallpaper: sets the image as your wallpaper for the idle screen.

Delete all *(Menu 6.5)*

This menu allows you to delete all of the downloaded items in the Games, Sounds and Images folders separately. You can delete all of the items at one time.

1. To	Press the
select a folder to clear	Up or Down key. To delete all of your items, select All .
place a check mark	i key.
remove a check mark	i key again.

2. Press the **Delete** soft key to delete the marked items.
3. When a confirmation message displays, press the **i** key or **Yes** soft key to confirm.
4. When the phone asks for confirmation again, press the **i** key or **Yes** soft key.

Memory status *(Menu 6.6)*

You can check the amount of memory being used and the memory remaining for games or sounds and images.

Games: the display shows the total, free, and used space and the number of games you downloaded.

Sounds & images: the display shows the total, free, and used space, including each space used for sounds and images

Organiser

The Organiser feature enables you to:

- set an alarm so that the phone rings at a specific time, for example, to remind you of an appointment.
- view the calendar and organise your schedule.
- set the current time and date.
- use the phone as a calculator for basic mathematical equations or currency exchange operations.
- define a list of things to do.
- record voice memos.

Alarm *(Menu 7.1)*

This feature allows you to:

- set the alarm to ring at a specific time.
- set the phone to switch on automatically and ring the alarm even if the phone is switched off.

The following options are available:

Once: the alarm rings only once and is then deactivated.

Daily: the alarm rings every day at the same time.

Morning call: the alarm rings to wake you up in the morning.

To set an alarm:


1. Choose the type of alarm to be set and press the **i** key or **Select** soft key.
2. Enter the time for the alarm to sound.

Note: Your phone is preset to a 24-hour format. To change the format, see page 131.

If you want to use the alarm options, press the **Options** soft key. The following options are available:

- **Remove alarm:** deactivates the current alarm.
- **Alarm sound set:** allows you to select the alarm melody.

3. Press the **i** key.
4. If applicable, select **AM** or **PM** and press the **i** key or **Select** soft key.
5. If you select **Morning call** in step 1, select the repeat option, **Monday to friday** or **Monday to saturday**, and press the **i** key or **Select** soft key.

To stop the alarm when it rings, open the phone, if necessary and press the **Exit** soft key, one of the Volume keys, **C** key, or  key.

Remove alarm: deactivates all alarm settings.

Autopower: when this option is set to **Enable**, the alarm rings at the specified time, even if the phone is switched off.

If the menu option is set to **Disable** and the phone is switched off at the specified time, the alarm does not ring.

Calendar *(Menu 7.2)*

With the Calendar feature, you can:

- consult the calendar and check your memos.
- write memos to keep track of your schedule.
- set an alarm to act as a reminder.

Consulting the calendar

When you select the **Calendar** menu (**Menu 7.2**), the calendar displays with today's date highlighted. The following options are available when you press the **Options** soft key:

Search all: displays all of the memos, starting with the oldest, regardless of the day. To scroll through the memos, press the Up or Down key.

Delete all: allows you to delete all of the memos. You are asked to confirm your action.

Go to date: allows you to go to a specific date.

Exit: exits the Calendar feature and returns to Idle mode.

Writing a memo

You can make up to 100 memos for the calendar. More than one memo can be made for one day.

To write or edit a memo on a specific date:

1. Select a date on the calendar by using the Navigation keys.

Note: To skip to the previous or next month, press the Volume keys on the left side of the phone.

2. Press the **i** key.

An empty memo screen displays allowing you to enter your memo.

3. Enter your memo and then press the **i** key or **OK** soft key.

Note: For further details about how to enter characters, see page 46.

You are asked if you wish to set an alarm.

4. If you want an alarm to ring on the chosen day, press the **i** key.

Otherwise, press the **Skip** soft key. The memo is saved.

5. If you pressed the **i** key, enter the time for the alarm and press the **i** key.

Note: Your phone is preset to a 24-hour format. To change the format, see page 131.

You can also select the melody for the alarm by pressing the **Melody** soft key.

6. If applicable, select **AM** or **PM** and press the **i** key or **Select** soft key.

The colour of the date on the calendar changes to green to indicate that a memo exists for that date.

Viewing a memo

When you select a day on which more than one memo exists, the latest memo for the day displays.

In that case, press the Up or Down key to scroll to the previous or next memo.

You can use the following options by pressing the **i** key or **Options** soft key:

New: allows you to write a new memo.

Edit: allows you to change the memo text.

Alarm: allows you to set an alarm to ring at a specified time to remind you of the memo. If you have already set an alarm for that memo, you can change or delete the alarm.

Delete: allows you to delete the memo.

Copy to: allows you to copy the memo to another date.

Move to: allows you to change the date of the memo.

Time & date *(Menu 7.3)*

This menu allows you to change the current time and date displayed. You can also find out what time it is in another part of the world.

The following options are available:

Set time: allows you to enter the current time. You can select the time format in the **Time format** menu (**Menu 7.3.4**).

Note: Before setting the time, you must specify your time zone in the **World time** menu (**Menu 7.3.3**).

Set date: allows you to enter the day, month, and year.

World time: allows you to find out what time it is in another part of the world, using the Left and Right keys.

The screen shows the city name and the current time and date.

To select your time zone:

1. Select the city corresponding to your time zone by pressing the Left or Right key one or more times.

The local time and date display.

2. Press the **i** key or **Set** soft key.

Time format: allows you to change the time format to **12 hours** or **24 hours**.

Display options: allows you to set whether the phone displays the time or the date on the menu title bars.

Calculator *(Menu 7.4)*

With this feature, you can use the phone as a calculator. The calculator provides basic arithmetic functions; addition, subtraction, multiplication, and division.

1. Enter the first number using the numeric keys.

Notes:

- To move the cursor to the left or right, press the \leftarrow or \rightarrow key.
 - To include a decimal point or a bracket, press the left soft key until the symbol you want displays.
2. Enter the operation for your calculation by pressing the Navigation keys, according to the illustration on the display.
 3. Enter the second number.
 4. To view the result, press the $=$ key.
 5. Repeat steps 1 to 4 as many times as required.

To do list *(Menu 7.5)*

This feature allows you to:

- enter a list of tasks to be done.
- assign a priority and a deadline to each task.
- sort the tasks by priority and status.

Creating the To do list

1. Press the **i** key or **New** soft key.

2. Enter the first task.

Note: For further details about how to enter characters, see page 46.




3. Press the **i** key or **OK** soft key.

4. Select a priority status of high, normal or low priority using the Up and Down keys and press the **i** key or **Select** soft key.

5. Enter your deadline and press the **i** key.

If you do not want to set a deadline, press the **Skip** soft key.

Editing the To do list

When you select the **To do list** menu, the current contents display with the status mark, if the task has been done, and priority;  for High,  for Normal, and  for Low.

Scroll to a task from the list and press the **i** key to view the details for the task. You can scroll through the tasks using the Up and Down keys, if necessary.

To change the status of a specific task, press the ✱ key to mark the task as completed as of the current time and date.

You can use the following options by pressing the **Options** soft key:

New: allows you to create a new task.

Mark: allows you to change the status of a task. Select the appropriate status (**Done** or **Undo**).

Edit: allows you to edit a task. You can change the text, priority, and/or deadline for the task.

Sort: allows you to sort the existing tasks by priority or status. Select the sort criterion (**High**, **Low**, **Done**, or **Undo**).

Copy: allows you to copy a task.

Copy to calendar: allows you to copy a task to the calendar as a memo. You can also change the text and deadline for the task and/or set the alarm.

Delete: deletes a task.

Delete all: allows you to delete all tasks.

Exit: exits the idle screen.

Voice memo *(Menu 7.6)*

You can record voice memos. After recording, you can send a memo to other people via Multimedia Message Service.

Record voice *(Menu 7.6.1)*

This menu allows you to record a new memo. When you select this option, the display shows a 30-second timer.

1. To start recording, press the **i** key or **Record** soft key.
2. Record a memo by speaking into the microphone.
3. When you press the **i** key or **Stop** soft key, or if the recording time expires, the following options display:
 - **Replay**: plays back your memo.
 - **Re-record**: discards the memo and enables you to record another one.
 - **Save**: allows you to save the memo.
 - **Quit**: cancels your recording and exits the **Record voice** menu.
4. To save the memo, select **Save** from the options and press the **i** key or **Select** soft key.
5. Press the **C** key to clear the default name, if necessary, and enter a name for the memo.


For further details about how to enter characters, see page 46.

6. Press the **i** key or **OK** soft key.

The memo is saved and then the display shows the memo information.

7. Press the **i** key or **Options** soft key to use the following memo options:

- **Send:** allows you to send the memo to other people by using the MMS feature. Follow the procedure on page 97.
- **Rename:** allows you to change the memo's name.
- **Delete:** deletes the memo.

8. To exit, press the **C** or  key.

Voice list *(Menu 7.6.2)*

This menu shows a list of saved voice memos.

Scroll to a memo and press the **i** key or **Options** soft key to use the following options:

Play: plays the memo.

Send: allows you to send the memo to other people by using the MMS feature. See page 97 for further details about sending a message.

Rename: allows you to change the memo's name.

Properties: displays information about the memo, such as the name, the date when the memo was made, recording duration and memory size.

Delete: deletes the memo.

Delete all *(Menu 7.6.3)*

In this menu, you can delete all of your voice memos.

When a confirmation message appears, press the **i** key or **Yes** soft key. To cancel the deletion, press the **No** soft key. When the phone asks for confirmation again, press the **i** key or **Yes** soft key one more time.

Memory status *(Menu 7.6.4)*

You can check the amount of memory being used and the memory remaining for voice memos.

The display shows the total, free, and used memory, including the number of memos you recorded and the total number of memos you can record. Press the Up or Down key to scroll through the screen.

Currency exchange *(Menu 7.7)*

Using this menu, you can figure out currency conversions.

1. Enter the current exchange rate of your source currency and press the **i** key or **OK** soft key.

You can insert a decimal point by pressing the **#** key.

2. Enter the amount to convert and press the **i** key or **OK** soft key.


The amount you entered and its equivalent value display.

3. Press the **C** key or **Exit** soft key to exit the currency converter.

Camera

Using the camera module embedded in your phone, you can take photos of people or events while on the move. You can also send photos to other people in a multimedia message, or set one as wallpaper or as a caller ID image for a Phonebook entry.

You can also record videos using the phone as a camcorder.

Note: You can quickly access the **Camera** menu by pressing the Camera key () on the right side of the phone in Idle mode.

Caution:


- Do not take photos of people without their permission.
- Do not take photos in a place where cameras are not allowed.
- Do not take photos in a place where you may interfere with another person's privacy.

Taking a photo

Your camera produces JPEG pictures. You can take photos with the phone open or closed. When the phone is closed, you can use the external display.

Note: When you take a photo in direct sunlight or in bright conditions, shadows may appear on the photo.

Taking a photo with the phone open

1. Accessing the **Take photos** menu turns on the camera on the front of your phone. Or you can press and hold the Camera () key on the right side of the phone in Idle mode.

The image to be captured appears on the display.

2. Adjust the image by aiming the camera at the subject.



3. To	Press the
flip the image vertically	^ key.
flip the image horizontally	v key.
zoom in or out	Up or Down key.
adjust the brightness	Left or Right key.
use the options	left soft key. For details, see page 141.
switch to Record mode	1 key. For details, see page 144.
change the display size	2 key.
change the image quality	3 key.
change the shot mode	4 key.
change the colour tone or apply a special effect to the photo	5 key.
remove the white lines or spots on the display.	6 key.

3. To	Press the
use a decorated frame	7 key.
have a time delay before taking a photo	8 key.
access the My photos menu (Menu 8.2)	9 key. For details, see page 143.


4. Press the **i** key or Camera key to take the photo.

5. Press the **i** key or **Save** soft key.

To discard the photo, press the **Cancel** soft key.

6. To	Press the
use the photo options	i key or Options soft key. For details, see page 143.
return to Capture mode	C key or  soft key.
return to Idle mode	 key.

Taking a photo with the phone closed

1. When the phone is closed, press and hold the Camera () key on the right side of the phone.

The image to be captured appears on the external display.

2. Adjust the image by aiming the camera at the subject.

You can adjust the brightness and zoom in or out by using the Volume keys.

3. Press the Camera key to take the photo.

Your phone automatically saves the photo and returns to Capture mode.

Using the camera options

In Capture mode, you can access various options for the camera by pressing the left soft key.

The following options are available:

Effects: allows you to change the colour tone or apply a special effect to the photo.

Frames: allows you to use a decorated frame. Select a frame from the list using the Navigation keys.

Mode: allows you to take a photo in various modes. Once you change the mode, its indicator appears at the top left of the display.

Normal shot: allows you to take a photo in the normal mode.

Multi shot: allows you to take a series of action stills. Select the capture speed, **High speed** or **Normal speed**, and the number of photos the camera will take. When you press the **i** or Camera key, the camera takes photos successively.

After taking photos, press the **i** key or **SaveAll** soft key to save all of them or the **Save** soft key to save the selected photos.

Camera

Night shot: allows you to take a photo of the best quality when it is dark.

Rotation: allows you to rotate the photo. You can flip the photo vertically, see its mirror image, or do both at the same time.

Self timer: allows you to set a time delay before the camera takes the photo. Select the length of delay you want. When you press the **i** or Camera key, the camera takes the photo after the specified time.

Settings: allows you to change the default image settings.

Photo size: sets the image size to either **VGA(640x480)**, **QVGA(320x240)**, **QQVGA(160x120)**, or **Mobile(128x120)**. The selected image size displays on the top of the capture screen.

Photo quality: allows you to select the image quality from **Economy**, **Normal**, **Fine**, and **Super fine**. The selected quality displays on the top of the capture screen.

Take photos *(Menu 8.1)*


This menu allows you to take a photo.

Accessing this menu turns the camera on and the display switches to Capture mode. For further details about taking a photo, see page 138.

My photos *(Menu 8.2)*

This menu allows you to review your photos.

When you access this menu, your phone displays the photos in Thumbnail mode, which shows them as small images. Use the Navigation keys to scroll through the photos.

To view the photos on the full screen, press the **i** key. To go back to Thumbnail mode, press the **C** key or  soft key.

Press the **Options** soft key to use the following options:

View: allows you to view the photo on the full screen. This option is only available in Thumbnail mode.

Send: allows you to send the photo to other people as part of a multimedia message. For further details, see page 97.

Rename: allows you to change the name of the photo.

Set as wallpaper: allows you to set the photo as your wallpaper on the idle screen.

Set as caller ID: allows you to set the photo as a caller ID image for a Phonebook entry.

Protection: allows you to protect the photo from being deleted.

Delete: allows you to delete the photo.

Delete all: allows you to delete all of the photos saved in your phone.

Properties: shows the properties of the photo, such as the time and date it was taken, file size, photo size, protection status, file format, and file name.

Video *(Menu 8.3)*

You can record a video using your phone as a camcorder.

Record *(Menu 8.3.1)*

You can record up to five videos.

1. When the camera turns on, adjust the image by aiming the camera at the subject.

2. To	Press the
flip the image vertically	▲ key.
flip the image horizontally	▼ key.
zoom in or out	Up or Down key.
adjust the brightness	Left or Right key.
change the camera mode	1 key.

3. Press the **i** key or Camera key to start recording.
4. When you have finished, press the left soft key, **i** key, or Camera key.

Or, the phone automatically stops when the recording time expires.

5. Press the **i** key or **Save** soft key. The video is saved and the display returns to Record mode.


To discard the video, press the **Cancel** soft key.

Video clips *(Menu 8.3.2)*

When you access this menu, the thumbnail images of your videos display.

To play a video:

1. Press the Navigation keys to scroll to the video you want to review.
2. Press the **i** key to start playing the video.

3. To	Press the
pause the playing	i key or Pause soft key.
resume	i key or Continue soft key.
stop	Stop soft key.
return to Idle mode	 key.

Press the **Options** soft key on the video list to use the following options:

Rename: allows you to change the file name.

Delete: allows you to delete the current video file.

Delete all: allows you to delete all of your video files.

Protection: allows you to protect the video from being deleted.

Properties: shows the properties of the video, such as the time and date it was recorded, file size, protection status, and playing time.

Memory status *(Menu 8.4)*

You can check the amount of the memory being used and the memory remaining in the camera.

Each time you press the Up or Down key, the display shows the total, free, and used space for photos and videos.

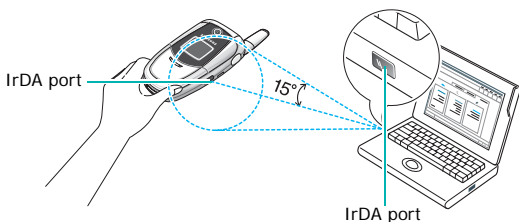
Phone settings

Many different features of your phone can be customised to suit your preferences. All of these features are accessed in the **Phone settings** menu.

Activate infrared *(Menu 9.1)*

This feature allows you to send or receive data through the infrared port. To use an infrared connection, you must:

- configure and activate an IrDA-compliant infrared port on your PC.
- activate the infrared feature on the phone; the IrDA icon (📶) appears on the top line of the display.
- align the IrDA port on the phone with the IrDA port on your computer.



The connection is ready for data transmission.

If there is no communication between your phone and the IrDA-compliant device within 30 seconds of activating the feature, it is automatically deactivated.

Note: For optional performance, use the PC data cable supplied in your SGH-E300 kit.

Display settings *(Menu 9.2)*

In this menu, you can change various settings for the display or backlight.

Wallpaper *(Menu 9.2.1)*

This menu allows you to change the background image or the colour of the text to be displayed in Idle mode.

The following options are available:

Wallpaper list: you can download images from the wireless web site preset by your service provider, or select a background image to be displayed on the idle screen.

To change the background image:

1. Scroll through the list by pressing the Up or Down key.

You have various preset images available. You can also select a blank background or any images downloaded from the Internet and the EasyGPRS programme, or received in messages.

2. Press the **i** key or **Select** soft key when the image you want highlights.
3. When the image displays, press the **i** key or **Select** soft key to display it on the idle screen.

Text display: you can specify whether or not the phone displays the time and date on the idle screen.

Text color: you can select the colour of the text to be displayed on the idle screen.

Front LCD display *(Menu 9.2.2)*

This menu allows you to select the colour of an image to be displayed on the external display.

Menu style *(Menu 9.2.3)*

This menu allows you to select the menu display style. You can select from **Grid style**, **Bar style**, and **Page style**.

Back light *(Menu 9.2.4)*

You can select the length of time the backlight is on. The backlight turns on when you press a key, when you open the phone, or when you receive a call or message, and remains on for the specified length of time.

Service light *(Menu 9.2.5)*

This menu allows you to select whether or not the service light is used. It also allows you to select a colour in which it flashes.

Select one of the colour settings. When the phone is ready for use, the service light flashes in the chosen colour.

If you do not wish to use the service light, select **Off**.

Graphic logo *(Menu 9.2.6)*

This menu allows you to display your service provider's logo instead of its name.

Off: the service provider's name displays in Idle mode.

On: the service provider's logo stored in your phone displays in Idle mode; if no logo has been stored, the service provider's name displays.

Greeting message *(Menu 9.3)*

This menu allows you to set a greeting to be displayed briefly when the phone is switched on.

To	Press the
clear the existing message	C key and hold it down until the message is cleared.
enter a new message	appropriate alphanumeric keys.
change the text input mode	right soft key.

For further details about how to enter characters, see page 46.

Own number *(Menu 9.4)*

This function is a memory aid, which you can use to check your own phone numbers if you need to do so.

You can:

- assign a name to each of your own phone numbers registered on your SIM card.
- edit the names and numbers.

Any changes made here do not in any way affect the actual subscriber numbers on your SIM card.

Language *(Menu 9.5)*

You can select a display language. When the language option is set to **Automatic**, the language is automatically selected according to the language of the SIM card used.

Note: Depending on your country, service provider or software version of the phone, the **Automatic** option may not display.

Security *(Menu 9.6)*

The Security feature enables you to restrict the use of your phone to others and the types of calls.

Various codes and passwords are used to protect the features of your phone. They are described in the following sections. Also see pages 161-164.

PIN check *(Menu 9.6.1)*

When the PIN check feature is enabled, you must enter your PIN each time you switch the phone on. Consequently, any person who does not have your PIN cannot use your phone without your approval.

Note: Before disabling the PIN check feature, you must enter your PIN.

The following options are available:

Disable: the phone connects directly to the network when you switch it on.

Enable: you must enter the PIN each time the phone is switched on.

Change PIN *(Menu 9.6.2)*

This feature allows you to change your current PIN to a new one, provided that the PIN check feature is enabled. You must enter the current PIN before you can specify a new one.

Once you have entered a new PIN, you are asked to confirm it by entering it again.

Phone lock *(Menu 9.6.3)*

When the Phone lock feature is enabled, the phone is locked and you must enter a 4 to 8-digit phone password each time the phone is switched on.

The password is preset to "00000000" at the factory. To change the phone password, see the **Change password** menu (**Menu 9.6.4**).

Once the correct password has been entered, you can use the phone until you switch it off.

The following options are available:

Disable: you are not asked to enter the phone password when you switch the phone on.

Enable: you are required to enter the phone password when you switch the phone on.

Change password *(Menu 9.6.4)*

The Change password feature allows you to change your current phone password to a new one. You must enter the current password before you can specify a new one.

The password is preset to "00000000" at the factory. Once you have entered a new password, you are asked to confirm it by entering it again.

Privacy *(Menu 9.6.5)*

Using this menu, you can lock your media contents, such as multimedia messages, photos, voice, videos, images and sounds. Once you have locked the contents, you must enter the phone password to access the associated menus.

To	Press the
select an item to lock	Up or Down key. To lock all of the contents, select All .
place a check mark	i key.
remove a check mark	i key again.
lock the marked items	OK soft key.

When the phone asks for the phone password, enter the password and press the **i** key or **OK** soft key.

Note: The password is preset to "00000000" at the factory. To change this password, see page 153.

SIM lock *(Menu 9.6.6)*

When the SIM lock feature is enabled, your phone only works with the current SIM. You must enter the SIM lock code to use a different SIM card.

Once you have entered the lock code, you are asked to confirm it by entering it again.

To unlock the SIM, you must enter the SIM lock code.

FDN mode *(Menu 9.6.7)*

FDN (Fixed Dial Number) mode, if supported by your SIM card, allows you to restrict your outgoing calls to a limited set of phone numbers.

The following options are available:

Disable: you can call any number.

Enable: you can only call phone numbers stored in Phonebook. You must enter your PIN2.

Note: Not all SIM cards have a PIN2. If your SIM card does not, this menu does not display.

Change PIN2 *(Menu 9.6.8)*

The Change PIN2 feature allows you to change your current PIN2 to a new one. You must enter the current PIN2 before you can specify a new one.

Once you have entered a new PIN2, you are asked to confirm it by entering it again.

Note: Not all SIM cards have a PIN2. If your SIM card does not, this menu does not display.

Extra settings *(Menu 9.7)*

You can turn the automatic redialling or answering features on or off.

To turn a feature	Press the
on	i key or Mark soft key. A check mark displays in front of the option.
off	i key or Unmark soft key. The check mark no longer displays.



The following options are available:


Auto redial: when this option is checked, the phone makes up to ten attempts to redial a phone number after an unsuccessful call.

Note: The interval between attempts varies.

Active folder: when this option is checked, you can simply open the phone to answer a call.

When it is unchecked, you must open the phone and press a key to answer a call, depending on the setting of the **Anykey answer** option. See the next page.

Anykey answer: when this option is checked, you can answer an incoming call by pressing any key, except the  key or the **Reject** soft key. To reject the call, press the  key or the **Reject** soft key.

When this option is unchecked, you must press the  key or **Accept** soft key to answer a call.

Short cut *(Menu 9.8)*

The Navigation keys can be used as shortcut keys. In Idle mode, they allow you to access specific menus directly.

The Up key is fixed as a shortcut to the **Camera** menu. In this menu, you can change the shortcuts assigned to the Down, Right, and Left keys.

To assign a shortcut to a key:

1. Select the key to be used as a shortcut key by pressing the Up or Down key and press the **i** key or **Select** soft key.
2. Select the menu to be assigned to the key by pressing the Up or Down key.

Note: To deactivate a shortcut key, select the **None** option.

3. Press the **i** key or **Select** soft key to save the selection.

Reset settings *(Menu 9.9)*

You can easily reset your phone to its default settings. To reset your phone:

1. Select the **Reset settings** menu.
2. Enter the 4 to 8-digit phone password and press the **i** key or **OK** soft key.

Note: The password is preset to "00000000." To change this password, see page 153.

Solving problems

If you are experiencing problems with your phone, perform the following simple checks, before contacting a service professional. This may save you the time and expense of an unnecessary service call.

When you switch your phone on, the following messages may appear:

Insert SIM card

- Check that the SIM card is correctly installed.

Phone locked enter password

- The automatic locking function has been enabled. You must enter the phone's password before you can use the phone.

Enter PIN

- You are using your phone for the first time. You must enter the Personal Identification Number (PIN) supplied with the SIM card.
- The PIN check feature is enabled. Every time the phone is switched on, the PIN has to be entered. To disable this feature, use the **PIN check** menu (**Menu 9.6.1**).


Enter PUK

- The PIN code was entered incorrectly three times in succession and the phone is now blocked. Enter the PUK supplied by your service provider.


“No service,” “Network failure” or “Not done” displays

- The network connection was lost. You may be in a weak signal area (in a tunnel or surrounded by buildings). Move and try again.
- You are trying to access an option for which you have not taken out a subscription with your service provider. Contact the service provider for further details.

You have entered a number but it was not dialled

- Have you pressed the  key?
- Are you accessing the right cellular network?
- You may have set an outgoing call barring option.

Your correspondent cannot reach you

- Is your phone switched on (the  key pressed for more than one second)?
- Are you accessing the right cellular network?
- You may have set an incoming call barring option.




Your correspondent cannot hear you speaking

- Have you switched off the microphone?
- Are you holding the phone close enough to your mouth? The microphone is located at the bottom of the phone.

The phone starts beeping and “Warning** Low Battery” flashes on the display**

- Your battery is insufficiently charged. Recharge the battery.

The audio quality of the call is poor

- Check the signal strength indicator on the display (); the number of bars indicates the signal strength from strong () to weak ().
- Try moving the phone slightly or moving closer to a window if you are in a building.

No number is dialled when you recall a Phonebook entry

- Check that the number has been stored correctly, by using the Phonebook search feature.
- Re-store the number, if necessary.

If the above guidelines do not help you to solve the problem, take note of:

- the model and serial numbers of your phone
- your warranty details
- a clear description of the problem

Then contact your local dealer or Samsung after-sales service.

Access codes

There are several access codes that are used by your phone and its SIM card. These codes help you protect the phone against unauthorised use.

When requested for any of the codes explained below, enter the appropriate code (displayed as asterisks) and press the **i** key or **OK** soft key. If you make a mistake, press the **C** key one or more times until the incorrect digit is cleared and then continue entering the correct code.

The access codes, except for the PUK and PUK2 codes, can be changed using the **Security** menu (**Menu 9.6**). See page 151 for further details.

Important! Avoid using access codes resembling emergency numbers, such as 112, so that you do not accidentally dial an emergency number.

Phone password

The Phone lock feature uses the phone password to protect your phone against unauthorised use. The phone password is supplied with the phone and is preset to "00000000" at the factory.

To	See
activate/deactivate the Phone lock feature	page 152 (Menu 9.6.3).
change the phone password	page 153 (Menu 9.6.4).

PIN

The **P**ersonal **I**dentification **N**umber or PIN (4 to 8 digits) protects your SIM card against unauthorised use. It is usually supplied with the SIM card.

If you enter an incorrect PIN three times in succession, the code is disabled and cannot be used until you re-enable it by entering the PUK (see below).

To	See
activate/deactivate the PIN check feature	page 152 (Menu 9.6.1).
change the PIN	page 152 (Menu 9.6.2).

PUK

The 8-digit PUK (**P**IN **U**nblocking **K**ey) is required to change a disabled PIN. The PUK may be supplied with the SIM card. If not, or you have lost it, contact your service provider.

To re-enable your PIN:

1. Enter the PUK and press the **i** key or **OK** soft key.
2. Enter a new PIN of your choice and press the **i** key or **OK** soft key.
3. When the **Confirm new PIN** message displays, enter the same code again and press the **i** key or **OK** soft key.

If you enter an incorrect PUK ten times in succession, the SIM card becomes invalid. Contact your service provider for a new card.

PIN2

The PIN2 (4 to 8 digits), supplied with some SIM cards, is required to access specific functions, such as setting the maximum cost of a call. These functions are available if supported by your SIM card.

If you enter an incorrect PIN2 three times in succession, the code is disabled and you cannot access the functions until you re-enable it by entering the PUK2.

To change the PIN2, see page 155 (**Menu 9.6.8**).

PUK2

The 8-digit PUK2 (**PIN Unblocking Key 2**), supplied with some SIM cards, is required to change a disabled PIN2. If you lose the code, contact your service provider.

To re-enable your PIN2:

1. Enter the PUK2 and press the **i** key or **OK** soft key.
2. Enter a new PIN2 of your choice and press the **i** key or **OK** soft key.
3. When the **Confirm PIN2** message displays, enter the same code again and press the **i** key or **OK** soft key.

If you enter an incorrect PUK2 ten times in succession, you will not be able to access the functions requiring the PIN2. Contact your service provider for a new card.

Barring password

A 4-digit barring password is required when you use the Call Barring function. You can obtain the password from your service provider when you subscribe to this function.

You can change this password in the **Call barring** menu (**Menu 3.2**). See page 76 for further details.

Health and safety information

SAR certification information

This phone meets European Union (EU) requirements concerning exposure to radio waves.

Your mobile phone is a radio transmitter and receiver. It is designed and manufactured so as not to exceed the limits for exposure to radio-frequency (RF) energy, as recommended by the EU Council. These limits are part of comprehensive guidelines and establish permitted levels of RF energy for the general population. The guidelines were developed by independent scientific organisations through the periodic and thorough evaluation of scientific studies. The limits include a substantial safety margin designed to ensure the safety of all persons, regardless of age and health.

The exposure standard for mobile phones employs a unit of measurement known as SAR (Specific Absorption Rate). The SAR limit recommended by the EU Council is 2.0W/kg.*

The Highest SAR Value for this model phone was 0.52 W/kg.

* The SAR limit for mobile phones used by the public is 2.0 watts/kilogram (W/kg) averaged over ten grams of body tissue. The limit incorporates a substantial margin of safety to give additional protection for the public and to account for any variations in measurements. The SAR values may vary, depending on national reporting requirements and the network band.

SAR tests are conducted using standard operating positions with the phone transmitting at its highest certified power level in all tested frequency bands. Although the SAR is determined at the highest certified power level, the actual SAR level of the phone while operating can be well below the maximum value. This is because the phone is designed to operate at multiple power levels so as to use only the power required to reach the network. In general, the closer you are to a base station, the lower the power output of the phone.

Before a new model phone is available for sale to the public, compliance with the European R&TTE Directive must be shown. This directive includes as one of its essential requirements the protection of the health and safety of the user and any other person.

Precautions when using batteries

- Never use any charger or battery that is damaged in any way.
- Use the battery only for its intended purpose.
- If you use the phone near the network's base station, it uses less power; talk and standby time are greatly affected by the signal strength on the cellular network and the parameters set by the network operator.
- Battery charging time depends on the remaining battery charge, the type of battery and the charger used. The battery can be charged and discharged hundreds of times, but it will gradually wear out. When the operation time (talk time and standby time) is noticeably shorter than normal, it is time to buy a new battery.

- If left unused, a fully charged battery will discharge itself over time.
- Use only Samsung-approved batteries and recharge your battery only with Samsung-approved chargers. When a charger is not in use, disconnect it from the power source. Do not leave the battery connected to a charger for more than a week, since overcharging may shorten its life.
- Extreme temperatures will affect the charging capacity of your battery: it may require cooling or warming first.
- Do not leave the battery in hot or cold places, such as in a car in summer or winter conditions, as you will reduce the capacity and lifetime of the battery. Always try to keep the battery at room temperature. A phone with a hot or cold battery may temporarily not work, even when the battery is fully charged. Li-ion batteries are particularly affected by temperatures below 0 °C (32 °F).
- Do not short-circuit the battery. Accidental short-circuiting can occur when a metallic object (coin, clip or pen) causes a direct connection between the + and – terminals of the battery (metal strips on the battery), for example when you carry a spare battery in a pocket or bag. Short-circuiting the terminals may damage the battery or the object causing the short-circuiting.
- Dispose of used batteries in accordance with local regulations. Always recycle. Do not dispose of batteries in a fire.

Road safety

Your wireless phone gives you the powerful ability to communicate by voice, almost anywhere, anytime. But an important responsibility accompanies the benefits of wireless phones, one that every user must uphold.

When driving a car, driving is your first responsibility. When using your wireless phone behind the wheel of a car, make sure that you are following the special regulations in a given area or country.

Operating environment

Remember to follow any special regulations in force in any area and always switch your phone off whenever it is forbidden to use it, or when it may cause interference or danger.

When connecting the phone or any accessory to another device, read its user's guide for detailed safety instructions. Do not connect incompatible products.

As with other mobile radio transmitting equipment, users are advised that for the satisfactory operation of the equipment and for the safety of personnel, it is recommended that the equipment should only be used in the normal operating position (held to your ear with the antenna pointing over your shoulder).

Electronic devices

Most modern electronic equipment is shielded from radio frequency (RF) signals. However, certain electronic equipment may not be shielded against the RF signals from your wireless phone. Consult the manufacturer to discuss alternatives.

Pacemakers

Pacemaker manufacturers recommend that a minimum distance of 15 cm (6 inches) be maintained between a wireless phone and a pacemaker to avoid potential interference with the pacemaker. These recommendations are consistent with the independent research and recommendations of Wireless Technology Research.

Persons with pacemakers:

- Should always keep the phone more than 15 cm (6 inches) from their pacemaker when the phone is switched on
- Should not carry the phone in a breast pocket
- Should use the ear opposite the pacemaker to minimise potential interference

If you have any reason to suspect that interference is taking place, switch your phone off immediately.

Hearing aids

Some digital wireless phones may interfere with some hearing aids. In the event of such interference, you may wish to consult your hearing aid manufacturer to discuss alternatives.

Other medical devices

If you use any other personal medical devices, consult the manufacturer of your device to determine if it is adequately shielded from external RF energy. Your physician may be able to assist you in obtaining this information. Switch your phone off in health care facilities when any regulations posted in these areas instruct you to do so. Hospitals or health care facilities may be using equipment that could be sensitive to external RF energy.

Vehicles

RF signals may affect improperly installed or inadequately shielded electronic systems in motor vehicles. Check with the manufacturer or its representative regarding your vehicle.

You should also consult the manufacturer of any equipment that has been added to your vehicle.

Posted facilities

Switch your phone off in any facility where posted notices require you to do so.

Potentially explosive environments

Switch your phone off when in any area with a potentially explosive atmosphere and obey all signs and instructions. Sparks in such areas could cause an explosion or fire resulting in bodily injury or even death.

Users are advised to switch the phone off while at a refuelling point (service station). Users are reminded of the need to observe restrictions on the use of radio equipment in fuel depots (fuel storage and distribution areas), chemical plants or where blasting operations are in progress.


Areas with a potentially explosive atmosphere are often but not always clearly marked. They include the areas below decks on boats, chemical transfer or storage facilities, vehicles using liquefied petroleum gas, such as propane or butane, areas where the air contains chemicals or particles, such as grain, dust or metal powders, and any other area where you would normally be advised to turn off your vehicle engine.

Emergency calls

This phone, like any wireless phone, operates using radio signals, wireless and landline networks as well as user-programmed functions, which cannot guarantee connection in all conditions. Therefore, you should never rely solely on any wireless phone for essential communications (medical emergencies, for example).

Remember, to make or receive any calls the phone must be switched on and in a service area with adequate signal strength. Emergency calls may not be possible on all wireless phone networks or when certain network services and/or phone features are in use. Check with local service providers.

To make an emergency call, proceed as follows.

1. If the phone is not on, switch it on.
2. Key in the emergency number for your present location (for example, 112 or any other official emergency number). Emergency numbers vary by location.
3. Press the  key.

If certain features are in use (call barring, for example), you may first need to deactivate those features before you can make an emergency call. Consult this document and your local cellular service provider.

When making an emergency call, remember to give all the necessary information as accurately as possible. Remember that your phone may be the only means of communication at the scene of an accident; do not cut off the call until given permission to do so.

Other important safety information

- Only qualified personnel should service the phone or install the phone in a vehicle. Faulty installation or service may be dangerous and may invalidate any warranty applicable to the device.
- Check regularly that all wireless phone equipment in your vehicle is mounted and operating properly.
- Do not store or carry flammable liquids, gases or explosive materials in the same compartment as the phone, its parts or accessories.
- For vehicles equipped with an air bag, remember that an air bag inflates with great force. Do not place objects, including both installed or portable wireless equipment in the area over the air bag or in the air bag deployment area. If wireless equipment is improperly installed and the air bag inflates, serious injury could result.
- Switch your phone off before boarding an aircraft. The use of wireless phones in an aircraft may be dangerous to the operation of the aircraft, and is illegal.
- Failure to observe these instructions may lead to the suspension or denial of telephone services to the offender, or legal action, or both.

Care and maintenance

Your phone is a product of superior design and craftsmanship and should be treated with care. The suggestions below will help you fulfill any warranty obligations and allow you to enjoy this product for many years.

- Keep the phone and all its parts and accessories out of the reach of small children.
- Keep the phone dry. Precipitation, humidity and liquids contain minerals that corrode electronic circuits.
- Do not use the phone with a wet hand. Doing so may cause an electric shock to you or damage to the phone.
- Do not use or store the phone in dusty, dirty areas, as its moving parts may be damaged.
- Do not store the phone in hot areas. High temperatures can shorten the life of electronic devices, damage batteries, and warp or melt certain plastics.
- Do not store the phone in cold areas. When the phone warms up to its normal operating temperature, moisture can form inside the phone, which may damage the phone's electronic circuit boards.
- Do not drop, knock or shake the phone. Rough handling can break internal circuit boards.
- Do not use harsh chemicals, cleaning solvents or strong detergents to clean the phone. Wipe it with a soft cloth slightly dampened in a mild soap-and-water solution.

- Do not paint the phone. Paint can clog the device's moving parts and prevent proper operation.
- Do not put the phone in or on heating devices, such as a microwave oven, a stove or a radiator. The phone may explode when overheated.
- Use only the supplied or an approved replacement antenna. Unauthorised antennas or modified accessories may damage the phone and violate regulations governing radio devices.
- If the phone, battery, charger or any accessory is not working properly, take it to your nearest qualified service facility. The personnel there will assist you, and if necessary, arrange for service.



Glossary

To help you understand the main technical terms and abbreviations used in this booklet, and to take full advantage of the features of your mobile phone, here are a few definitions:

Active folder

Ability to answer a call simply by opening the phone.

Call barring

Ability to restrict outgoing and incoming calls.

Call diverting

Ability to reroute calls to another number.

Call holding

Ability to put one call on standby while answering or making another call; you can then switch between the two calls, as required.

Call waiting

Informs you that you have an incoming call when you are engaged on another call.

Caller line identification services (Caller ID)

Services allowing subscribers to view or block the telephone numbers of callers.

Dual Band

Ability to operate with both DCS (1800 MHz) and GSM (900 MHz) networks. The phone automatically uses the network with strongest signal and even switches networks during a call within the same operator's network.

EMS (Enhanced Message Service)

An adaptation of the Short Message Service (SMS) that allows you to send and receive ring tones and the service provider's logo, as well as combinations of simple media to and from EMS-compliant handsets. Because EMS is based on SMS, it can use SMS centres the same way that SMS does. EMS works on all Global System for Mobile communications (GSM) networks. EMS senders can use text, melodies, photos, sounds, and animations to enhance the expressive power of messages that are limited by the display constraints of mobile devices.

GPRS (General Packet Radio Service)

New non-voice value-added service that allows information to be sent and received across a mobile telephone network. GPRS provides continuous connection to the Internet for mobile phone and computer users. It is based on the Global System for Mobile Communication (GSM) circuit-switched cellular phone connections and the Short Message Service (SMS).

GSM (Global System for Mobile Communication)

International standard for cellular communication, guaranteeing compatibility between the various network operators. GSM covers most European countries and many other parts of the world.

Java

Programming language generating applications that can run on all hardware platforms, whether small, medium or large, without modification. It has been promoted for and geared heavily to the Web, both for public Web sites and Intranets. When a Java program runs from a Web page, it is called a *Java applet*. When it is run on a mobile phone or pager, it is called a MIDlet.

MMS (Multimedia Message Service)

A message service for the mobile environment, standardized by the WAP Forum and the 3rd Generation Partnership Program (3GPP). For phone users, MMS is similar to Short Message Service (SMS)-it provides automatic, immediate delivery of user-created content from phone to phone. The message addressing used is primarily phone numbers, thus the traffic goes from phone to phone. MMS also provides support for e-mail addressing, so that messages can be sent by e-mail. In addition to the text content of SMS, MMS messages can contain still images, voice or audio clips, and also video clips and presentation information.

Multi-party calling

Ability to establish a conference call involving up to five additional parties.

Phone password

Security code used to unlock the phone when you have selected the option to lock it automatically each time it switches on.

PIN (Personal Identification Number)

Security code that protects the phone against unauthorised use. The PIN is supplied by the service provider with the SIM card. It may be a four to eight-digit number and can be changed, as required.

PUK (PIN Unblocking Key)

Security code used to unlock the phone when an incorrect PIN has been entered three times in succession. The eight-digit number is supplied by the service provider with the SIM card.

Roaming

Use of your phone when you are outside your home area (when travelling for example).

SDN (Service Dialling Numbers)

Telephone numbers supplied by your network provider and giving access to special services, such as voice mail, directory inquiries, customer support and emergency services.



SIM (Subscriber Identification Module)

Card containing a chip with all the information required to operate the phone (network and memory information, as well as the subscriber's personal data). The SIM card fits into a small slot on the back of the phone and is protected by the battery.

SMS (Short Message Service)

Network service sending and receiving messages to and from another subscriber without having to speak to the correspondent. The message created or received can be displayed, received, edited or sent.

Soft keys

Two keys marked  and  on the phone, the purpose of which:

- varies according to the function that you are currently using.
- is indicated on the bottom line of the display just above the corresponding key.

Voice mail

Computerised answering service that automatically answers your calls when you are not available, plays a greeting (optionally in your own voice) and records a message.

Index

A

- Access codes • 161
- Active folder • 155
- Alarm • 126
- Alert type • 84
- Alphabet mode, text input • 50
- Answering
 - call • 26
 - second call • 57
- Anykey answer • 156
- Auto redial • 155

B

- Background image • 148
- Backlight
 - description • 15
 - time, set • 149
- Barring, calls • 76
- Battery
 - charging • 20
 - installing • 19
 - low indicator • 21
 - precautions • 166
 - removing • 18
- Bookmarks • 117
- Broadcast messages • 111
- Browser, WAP • 113

C

- Calculator • 132
- Calendar memos
 - copying • 130
 - deleting • 130
 - viewing • 130
 - writing • 128
- Call back, message • 92
- Call cost • 73
- Call records
 - dialled • 70
 - missed • 27, 69
 - received • 70
- Call time • 72

- Caller groups
 - editing • 42
 - searching • 41
- Caller ID • 80
- Calls
 - answering • 26
 - barring • 76
 - diverting • 74
 - ending • 24
 - holding • 52
 - making • 23
 - redialling • 24
 - rejecting • 26
 - waiting • 57, 78

Camera

- playing videos • 145
- recording videos • 144
- taking photos • 138
- viewing photos • 143
- CB (Cell Broadcast) messages • 111
- Characters, enter • 46
- Charging battery • 20
- Closed user group (CUG) • 80
- Conference call • 57
- Connect tone • 87
- Cost, calls • 73
- Currency exchange • 137

D

- Date, set • 131
- Deleting
 - calendar memo • 130
 - call record • 69
 - multimedia message • 103, 104
 - phonebook • 36
 - photo • 144
 - task • 134
 - text message • 92, 93
 - video • 146
 - voice memo • 136
- Delivery reports, message • 95
- Dialled calls • 70

Display

- backlight • 15
- external • 16
- icons • 14
- layout • 13
- settings • 148

Diverting, calls • 74

DNS settings • 122

DTMF tones, send • 55

E

Earpiece volume • 25

Emergency calls • 172

EMS (Enhanced Message Service) • 88

Error tone • 87

External display • 16, 149

F

FDN (Fixed Dial Number)
mode • 154

Folder tone • 86

Forward, multimedia
message • 103

Front LCD • 16, 149

Fun box • 113

G

Games • 120

Graphic logo • 150

Greeting message • 150

H

Health and safety • 165

Holding, call • 52

I

Icons, description • 14

Images, downloaded • 123

Inbox, messages

multimedia • 101

text • 91

Infrared, connect • 147

International calls • 23

Internet • 113

J

Java service • 120

K

Key volume • 25

Keypad tones

selecting • 84

sending • 55

Keys

description • 11

location • 10

shortcut • 156

L

Language, select • 151

Last number, redial • 24

Locking

media contents • 153

phone • 152

SIM card • 154

Low battery indicator • 21

M

Memory status

camera • 146

downloaded items •
125

multimedia messages
• 112

phonebook • 44

text messages • 112

voice memos • 137

Menus

- accessing • 60
- list • 62

Message tone • 85

Messages

- cell broadcast • 111
- greeting • 150
- multimedia • 96
- text • 88
- voice • 110

MIDlets, launch • 120

Minute minder • 87

Missed calls • 27, 69

MMS (Multimedia Messages Service) • 96

Morning call • 126

Multimedia messages

- creating/sending • 97
- deleting • 103, 104
- editing • 105
- reading • 101, 104
- setting • 106

Multi-party calls • 57

Muting

- all sounds • 29
- key tones • 55
- microphone • 54

N**Names**

- entering • 46
- searching/dialling • 40

Network selection • 79

Network services • 74

Numbers, phone

- searching/dialling • 40
- storing • 32

O

Organiser • 126

Outbox, messages

- multimedia • 104
- text • 92

Own number • 151

P**Password**

- call barring • 76, 164
- phone • 153, 161

Phone

- care and maintenance • 174
- display • 13
- icons • 14
- keys • 11
- locking • 152
- password • 153, 161
- resetting • 157
- switching on/off • 22
- unpacking • 9

Phonebook

- copying • 35
- deleting • 36, 43
- editing • 35
- options • 35
- searching/dialling • 40
- speed-dialling • 38
- storing • 32

Photo

- deleting • 144
- taking • 138
- viewing • 143

PIN

- changing • 152
- description • 162

PIN2

- changing • 155
- description • 163

Power on/off tone • 86

Privacy • 153

Problems, solve • 158

PUK • 162

PUK2 • 163

R

- Received calls • 70
- Received messages
 - multimedia • 101
 - text • 91
- Recording
 - videos • 144
 - voice memos • 135
- Redialling
 - automatically • 155
 - manually • 24
- Resetting phone • 157
- Ring tone • 83
- Ring type • 84
- Ring volume • 83
- Road safety • 168
- Roaming • 79

S

- Safety
 - information • 165
 - precautions • 7
- Scheduler • 128
- SDN (Service Dialling Numbers) • 45
- Searching, phonebook • 40
- Security, calls • 151
- Sent messages
 - multimedia • 104
 - text • 92
- Service light • 16, 149
- Shortcut, keys • 156
- Silent mode • 29
- SIM card
 - installing • 18
 - locking • 154
- SMS (Short Message Service)
 - Inbox • 91
 - Outbox • 92
- Soft keys • 30
- Sound settings • 83
- Sounds, downloaded • 123
- Speed-dial • 38
- Switching on/off
 - microphone • 54
 - phone • 22
- Symbol, text input • 51

T

- T9 mode, text input • 48
- Tasks, to do list
 - creating • 133
 - deleting • 134
 - editing • 133
- Templates
 - multimedia • 105
 - text • 94
- Text input mode • 47
- Text message
 - creating/sending • 89
 - deleting • 92, 93, 109
 - reading • 91, 92
 - setting • 94
- Text, enter • 46
- Time format • 131
- Time, set • 131
- To do list • 133
- Tone
 - connect • 87
 - error • 87
 - folder • 86
 - keypad • 84
 - message • 85
 - minute minder • 87
 - power on/off • 86
 - ring • 83
- Travel adapter • 20

U

- User group • 80

V

- Vibration • 84
- Video
 - deleting • 146
 - playing • 145
 - recording • 144
- Voice mail • 110
- Voice memo
 - deleting • 136
 - playing • 136
 - recording • 135
- Voicemail server • 110

Volume, adjust
 earpiece • 25
 keypad tone • 25
 ring • 83

W

Waiting call • 57, 78
Wallpaper • 148
WAP browser
 access • 113
 bookmarks • 117
 cache, clear • 119
World time • 131
Writing messages
 multimedia • 97
 text • 89

SGH-E300 GPRS Telephone

Quick reference card



① Press the **Menu** soft key.


② Scroll using the Navigation keys through the list of the menus until you reach the menu you want.

③ Press the **z** key.


④ Scroll using the Up and Down keys through the list of the options until the one you want is selected.


⑤ Press the **Select** soft key.


Each of the two soft keys ( and ) perform the function indicated by the text above it, on the bottom line of the display.



Switch on/off
Press and hold the  key.

Make a call
① Enter the number.
② Press the  key.


End a call
Briefly press the  key.


View missed calls immediately after missing them
① Open the phone and press the **View** soft key.
② Scroll using the Up and Down keys through the missed calls.
③ To return the call, press the  key.

Answer a call
Open the phone or Press the  key.

Adjust the volume
Press the  or  key on the left side of the phone.



Choose the alert type	<ol style="list-style-type: none"> ① Select the Alert type menu (Menu 4.3). ② Select an option: <ul style="list-style-type: none"> • Light only • Melody • Vibration • Vibra+melody ③ Press the Select soft key.
Store numbers in Phonebook	<ol style="list-style-type: none"> ① Enter the number and press the Save soft key. ② Select an icon. ③ Press the Select soft key. ④ Select a memory. ⑤ Press the Select soft key. ⑥ Enter the name. ⑦ Press the OK soft key. ⑧ If necessary, change the location number. ⑨ Press the OK soft key. ⑩ Press the  key to return to Idle mode.

Search for a number in Phonebook	<ol style="list-style-type: none"> ① Press the Phonebook soft key. ② Select the Search option. ③ Enter the first few letters of the name. ④ To scroll through the names, press the Up or Down key. ⑤ Press the View soft key. ⑥ To scroll through the numbers, press the Up or Down key. ⑦ Press the  key to dial.
Take a photo	<ul style="list-style-type: none"> • With the phone open <ol style="list-style-type: none"> ① Press and hold the Camera key. ② Press the Camera key. ③ Press the Save soft key. • With the phone closed <ol style="list-style-type: none"> ① Press and hold the Camera key. ② Press the Camera key.

Declaration of Conformity (R&TTE)

For the following product:

GSM900/GSM1800 Dualband Digital

Portable Cellular Telephone

(Product description)

SGH-E300

(Model name)

Manufactured at:

- Samsung Electronics Co., Ltd, 94-1, Imsoo-Dong, Gumi City, Kyung-Buk, Korea,
730-350

(factory name, address*)

to which this declaration relates, is in conformity with the following standards and/
or other normative documents.

Safety	: EN 60950:2000
EMC	: EN 301 489-01 v1.3.1 (2001-09) EN 301 489-07 v1.1.1 (2000-09)
SAR	: EN 50360:2001 EN 50361:2001
Network	: EN 301 511 v9.0.2(2003-03)

We hereby declare the [all essential radio test suites have been carried out and that]
the above named product is in conformity to all the essential requirements of
Directive 1999/5/EC.

The conformity assessment procedure referred to in Article 10 and detailed in
Annex[IV] of Directive 1999/5/EC has been followed with the involvement of the
following Notified Body(ies):

BABT, Claremont House, 34 Molesey Road,
Walton-on-Thames, KT12 4RQ, UK
Identification mark: 168

CE 0168

The technical documentation kept at:

Samsung Electronics Euro QA Lab.

which will be made available upon request.

(Representative in the EU)

Samsung Electronics Euro QA Lab.
Blackbushe Business Park, Saxony Way,
Yateley, Hampshire, GU46 6GG, UK
2004. 03. 16

(place and date of issue)



In-Seop Lee / S. Manager

(name and signature of authorised person)

* It is not the address of Samsung Service Centre. For the address or the phone number of
Samsung Service Centre, see the warranty card or contact the retailer where you
purchased your phone.