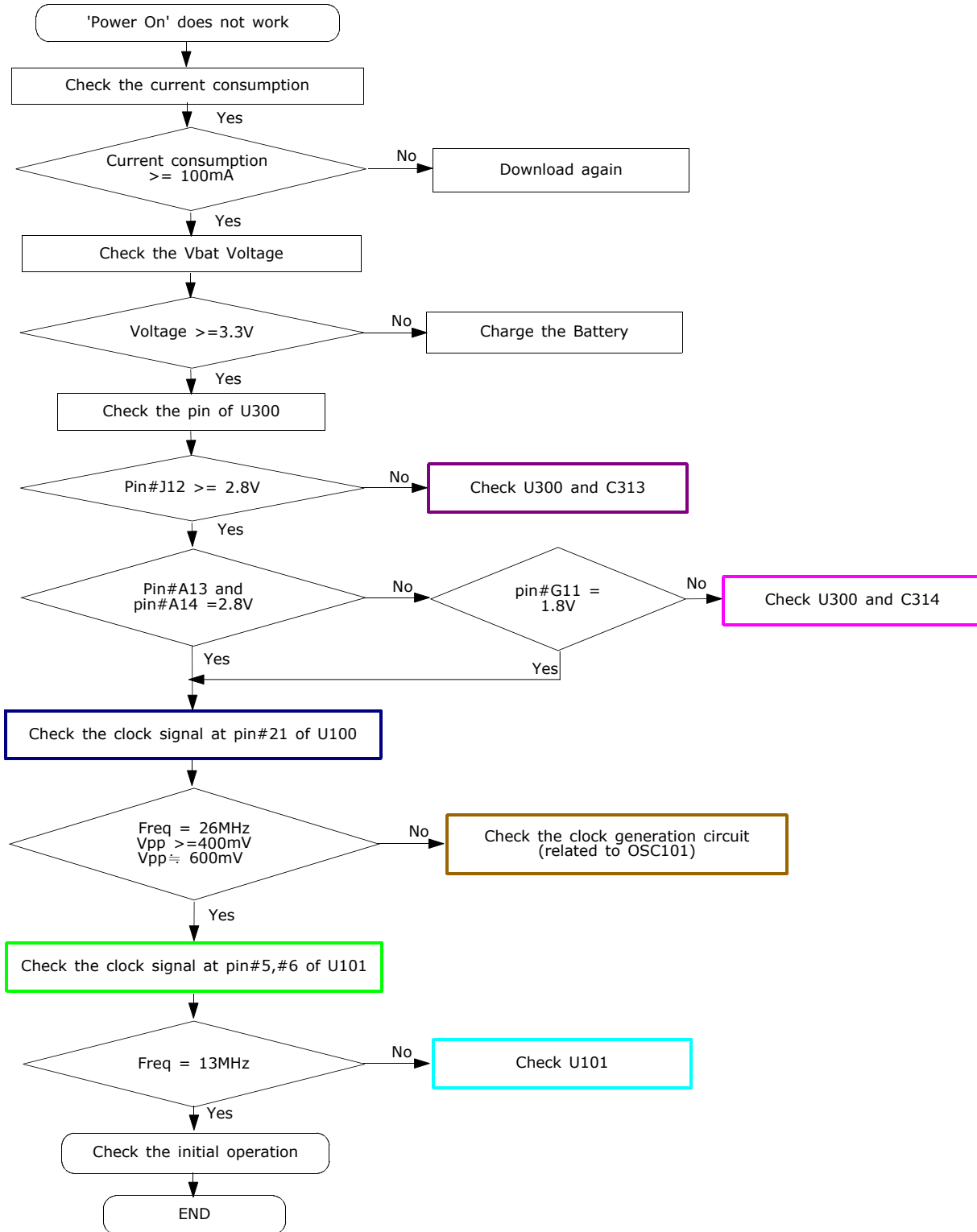


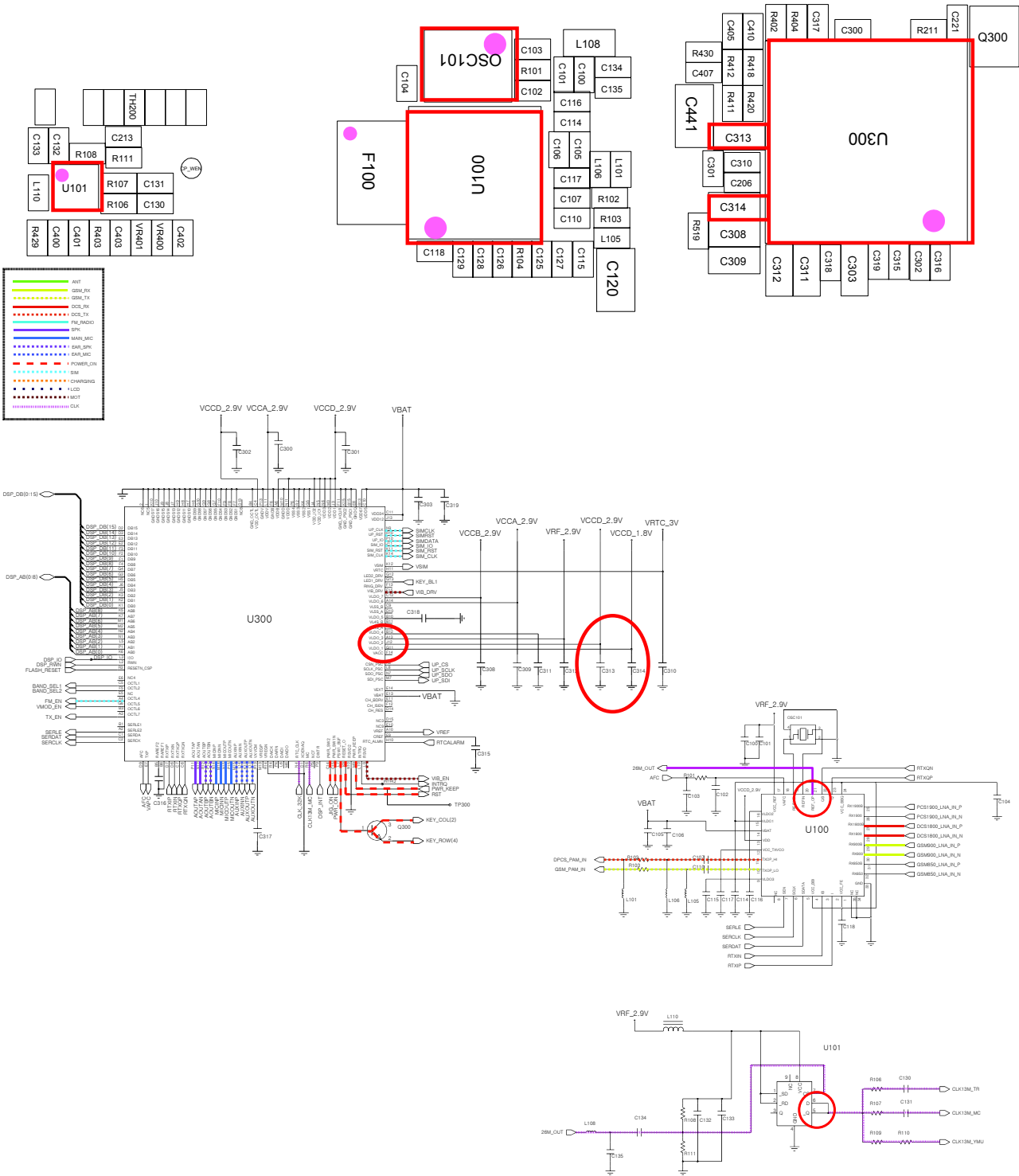
10. Flow Chart of Troubleshooting

10-1.Baseband

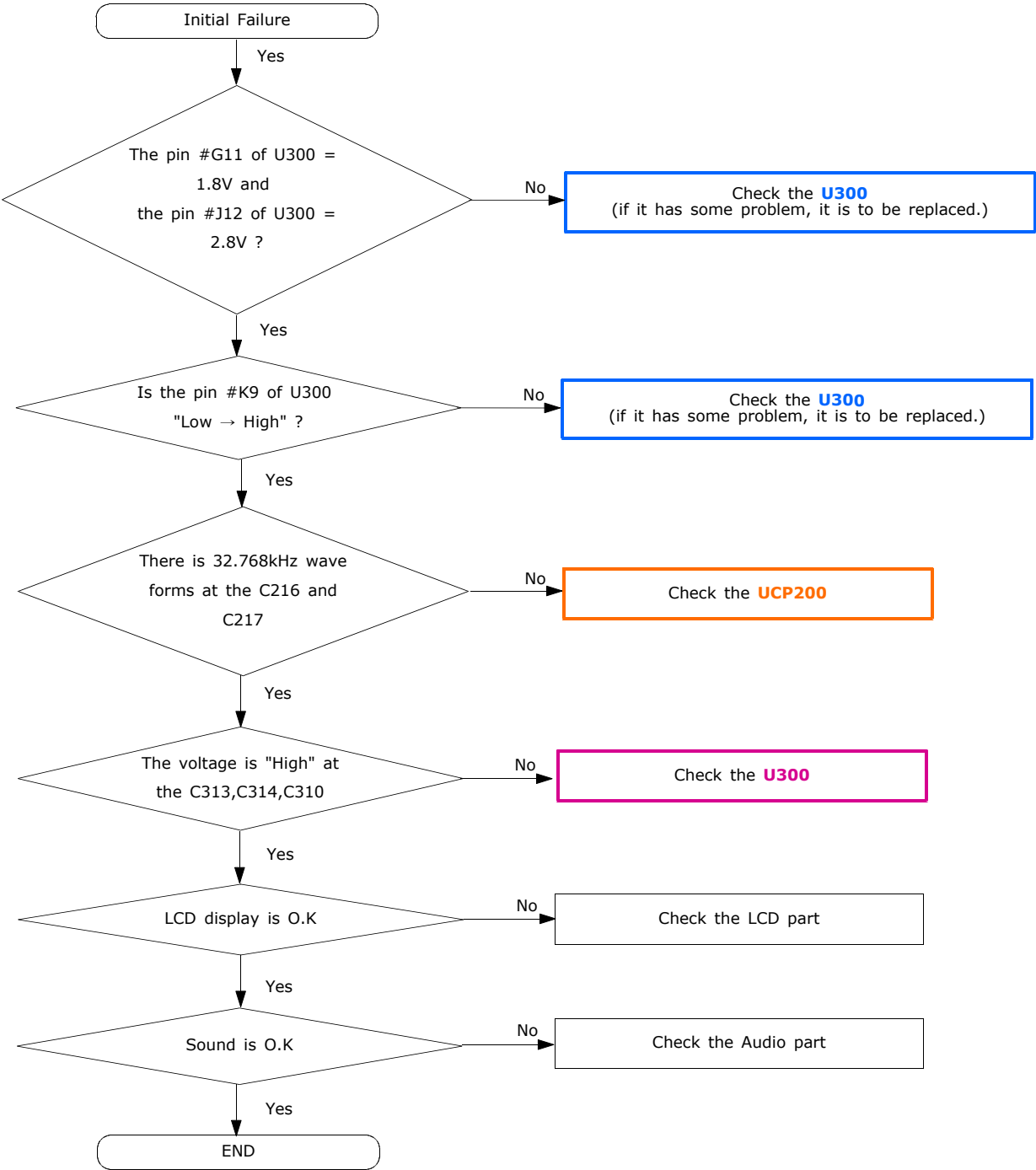
10-1-1. Power ON

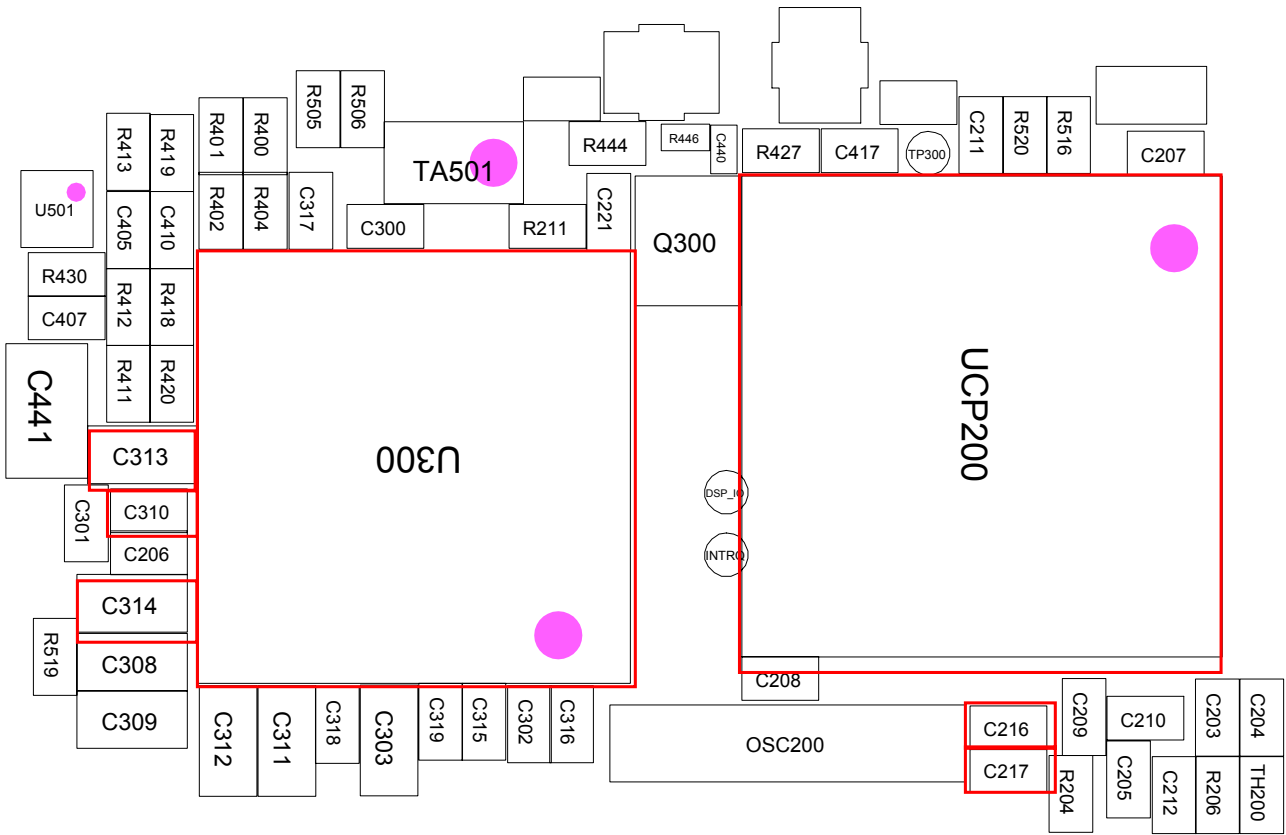


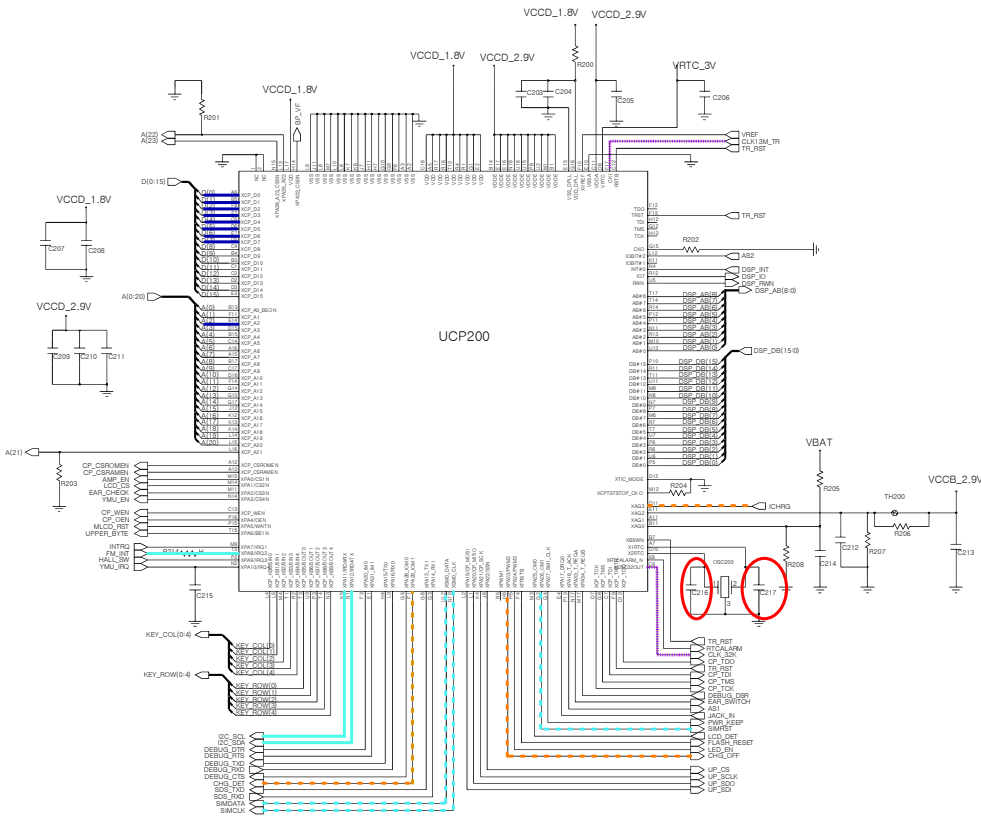
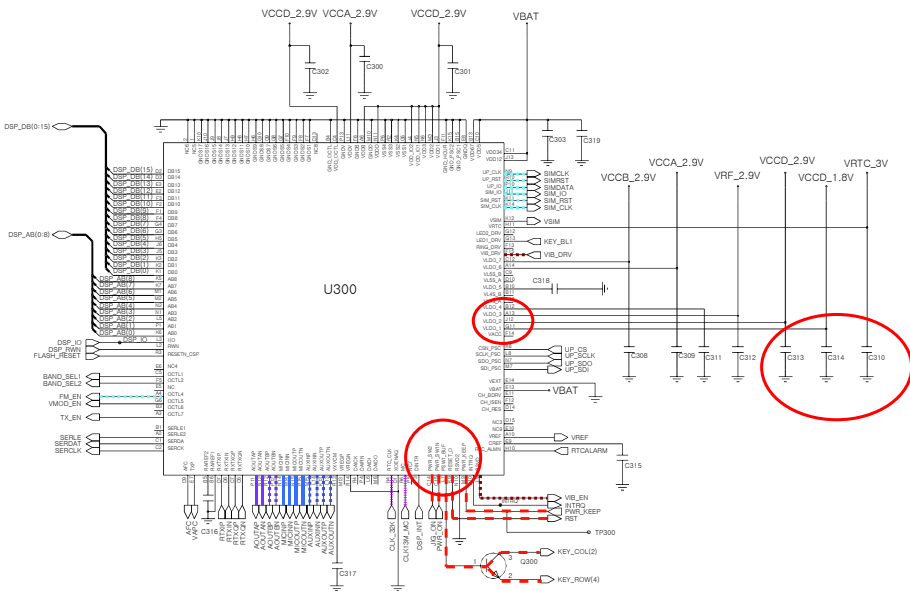
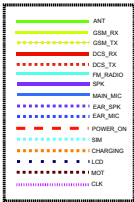
Flow Chart of Troubleshooting



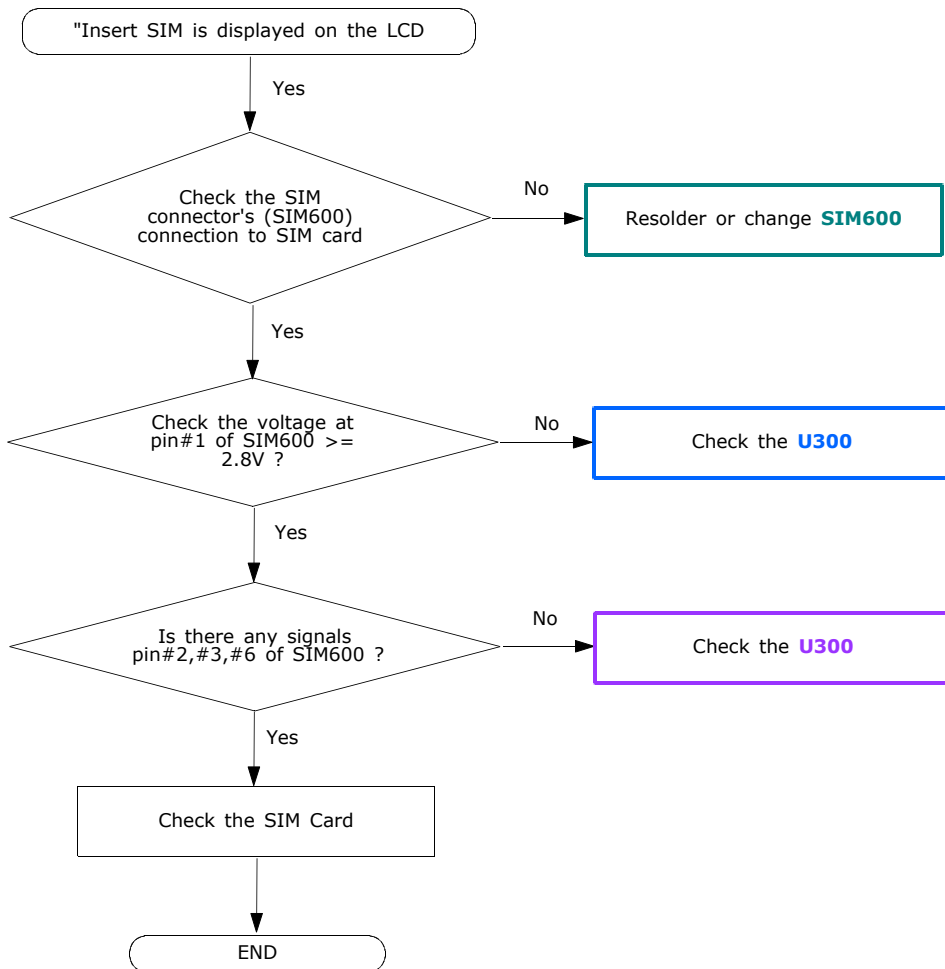
10-1-2. System Initial

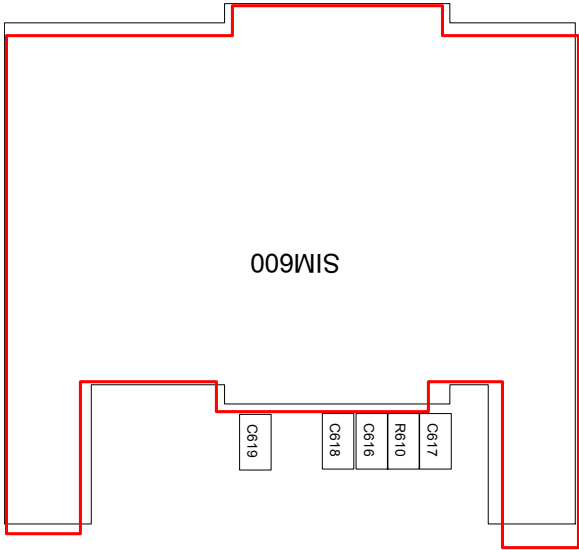
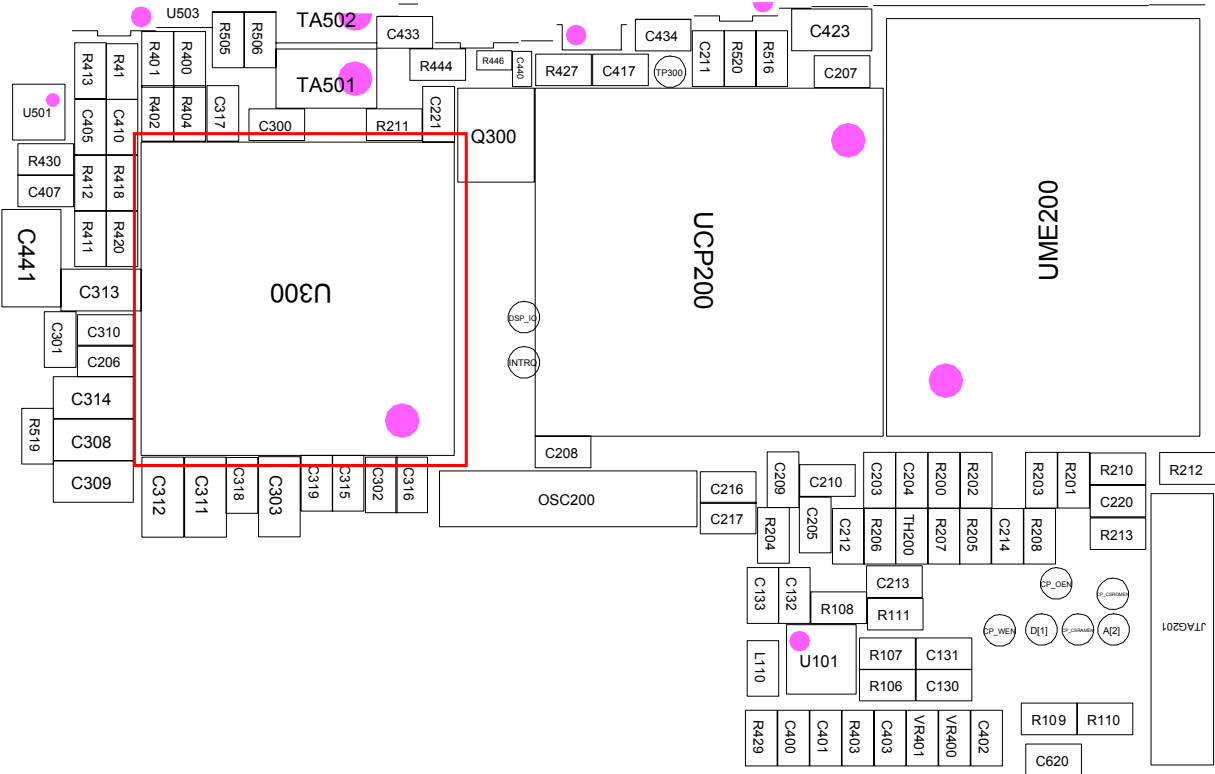




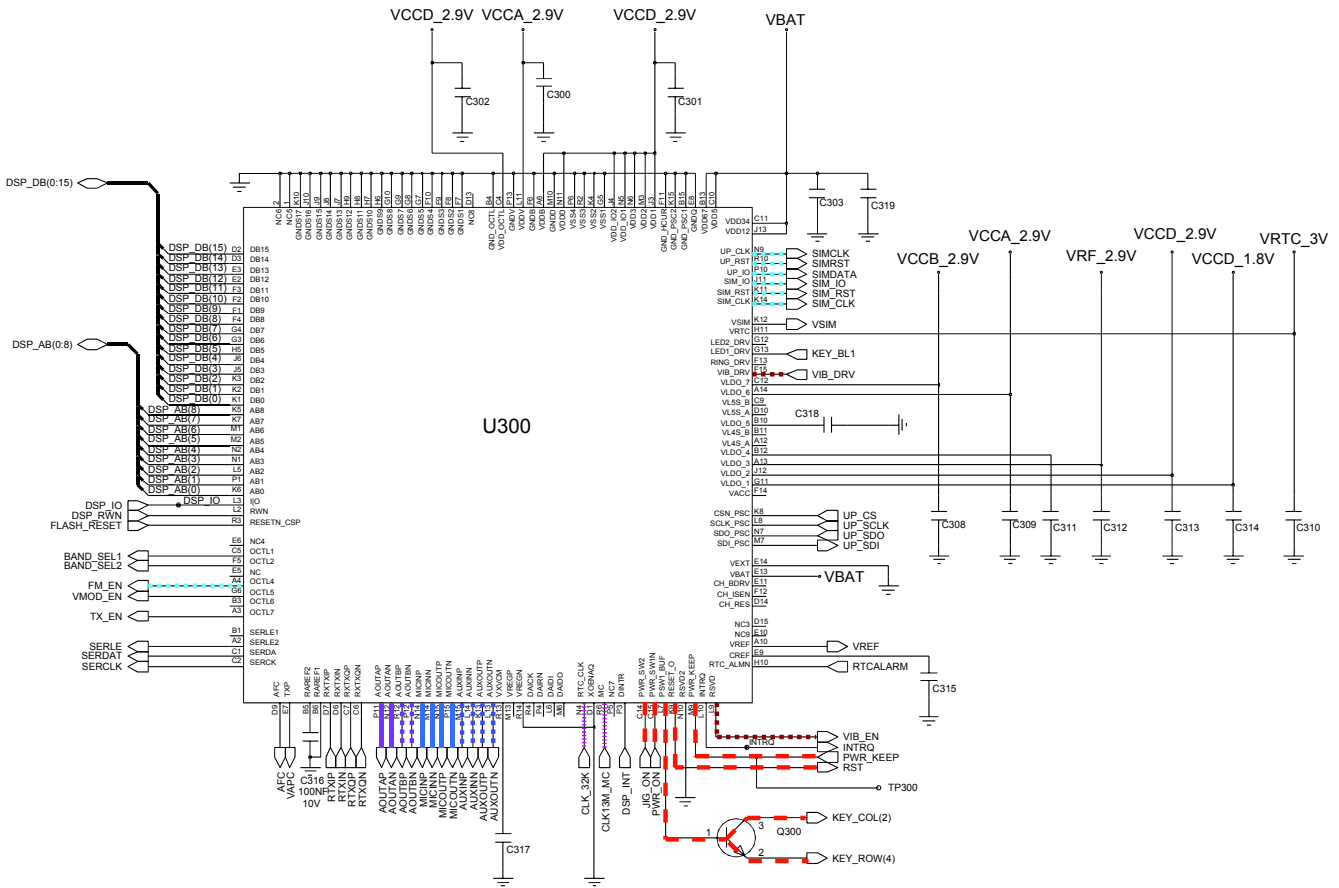
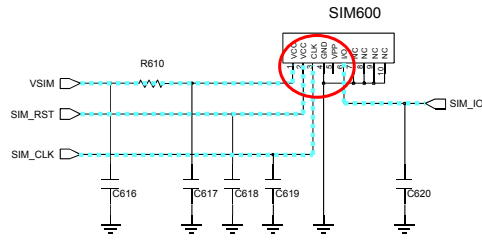
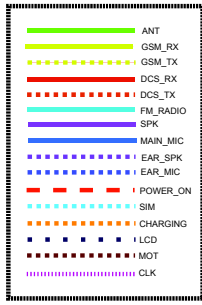


10-1-3. Sim Part

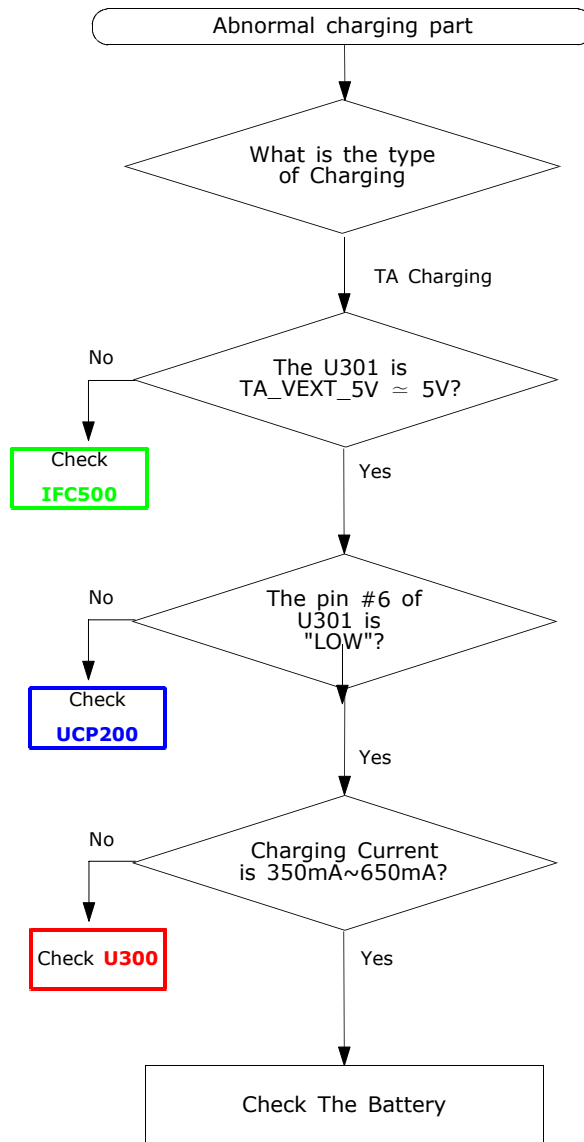




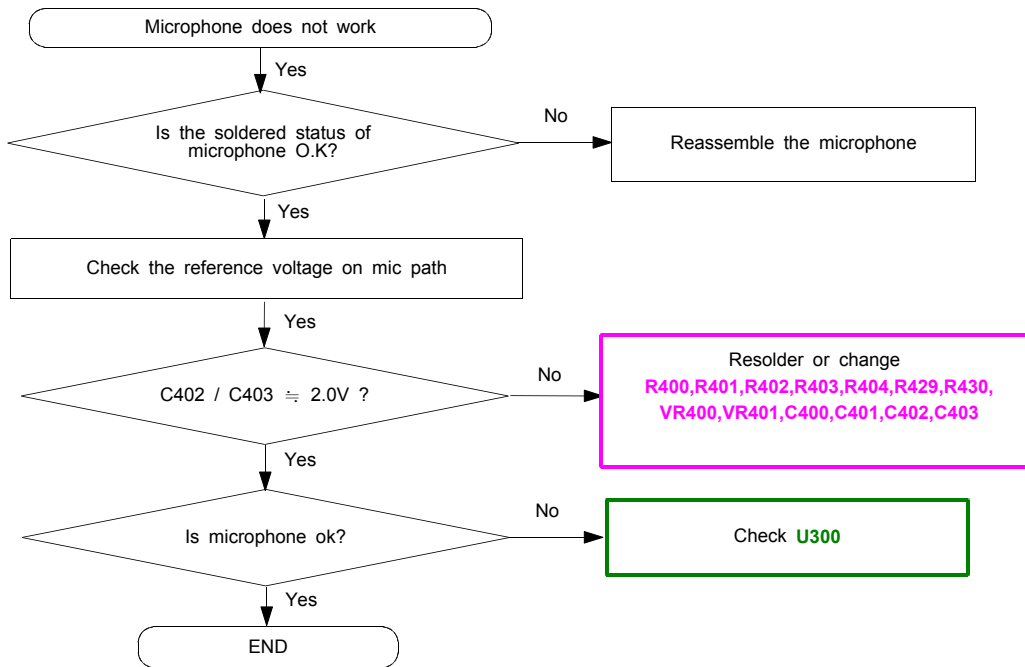
Flow Chart of Troubleshooting



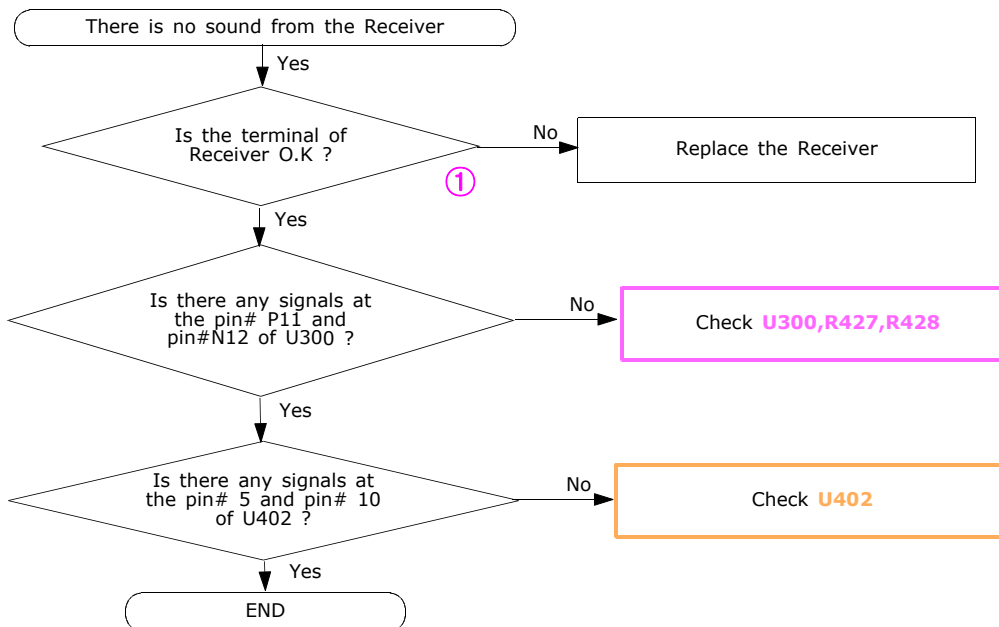
10-1-4. Charging Part



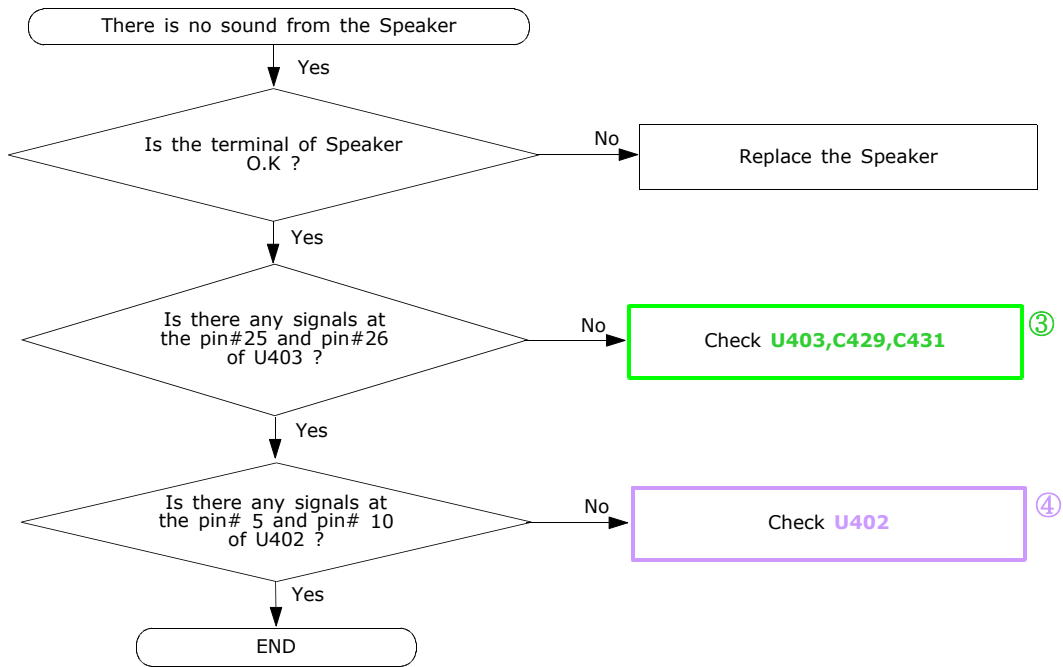
10-1-5. Microphone Part

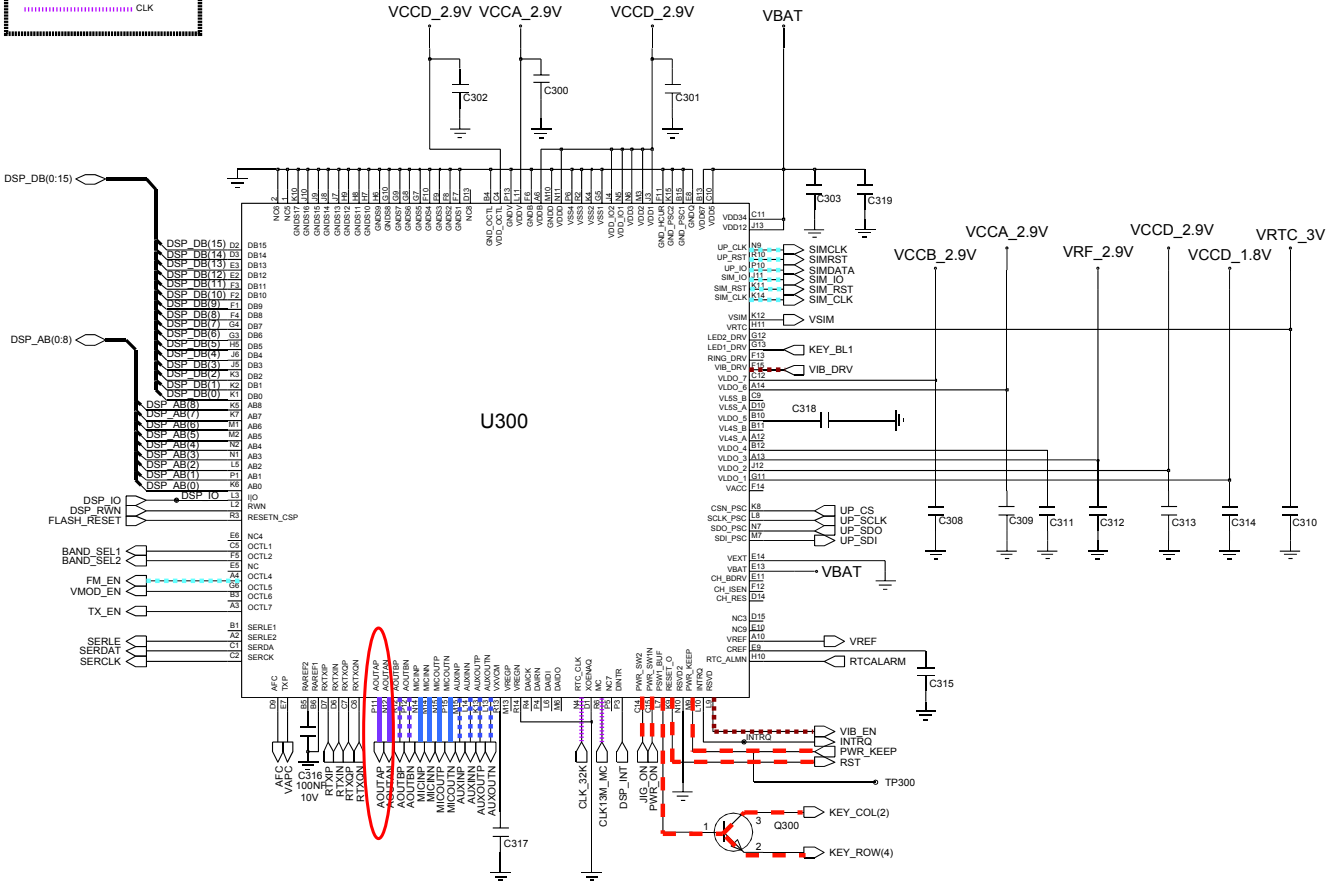
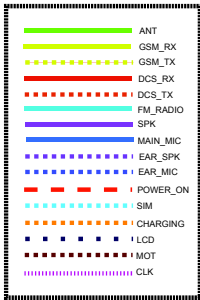


10-1-6. Receiver Part

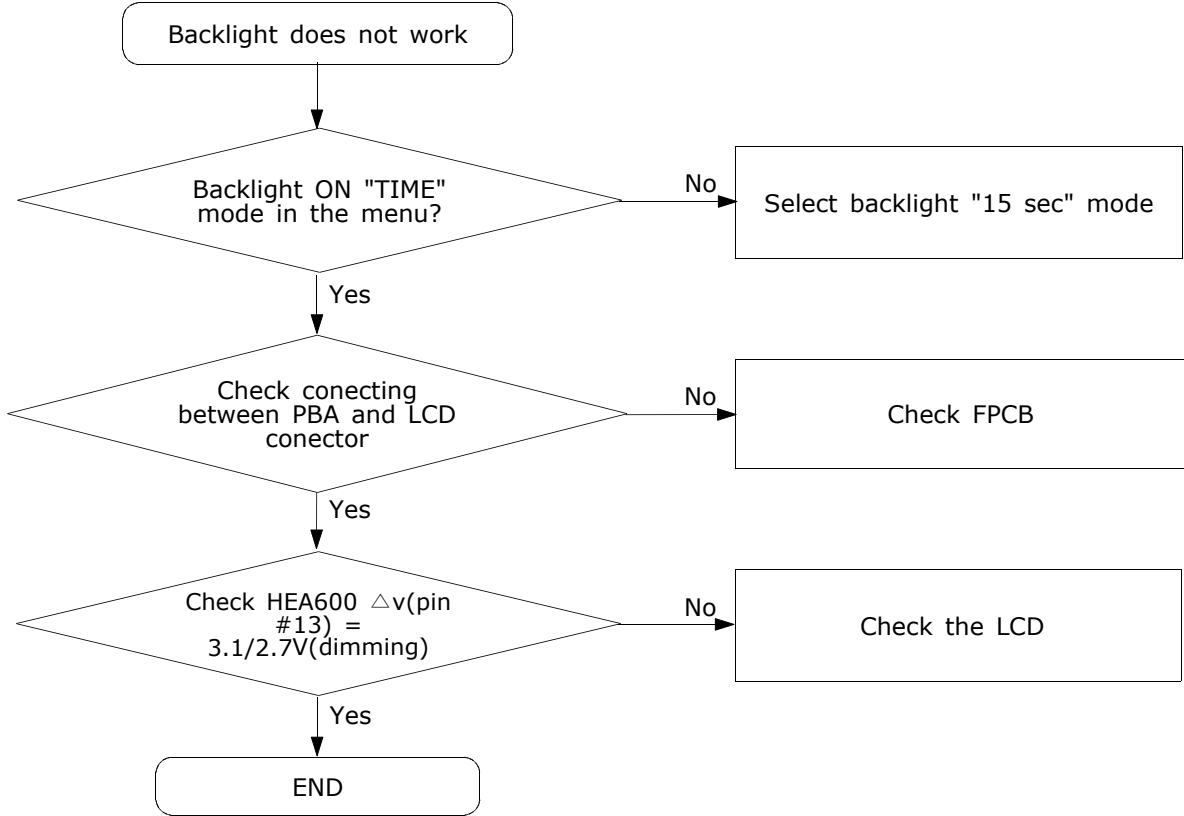


10-1-7. Speaker Part

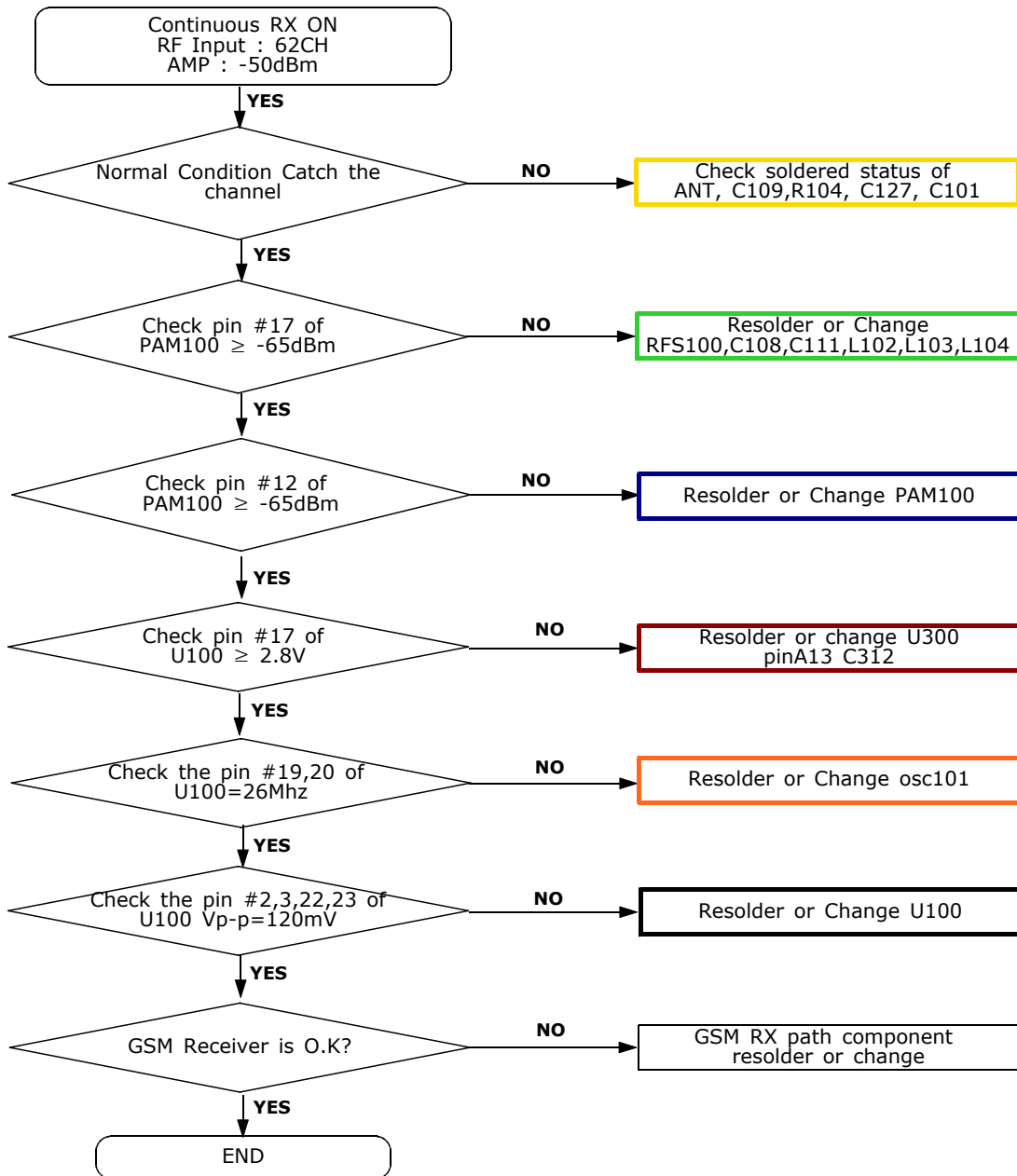




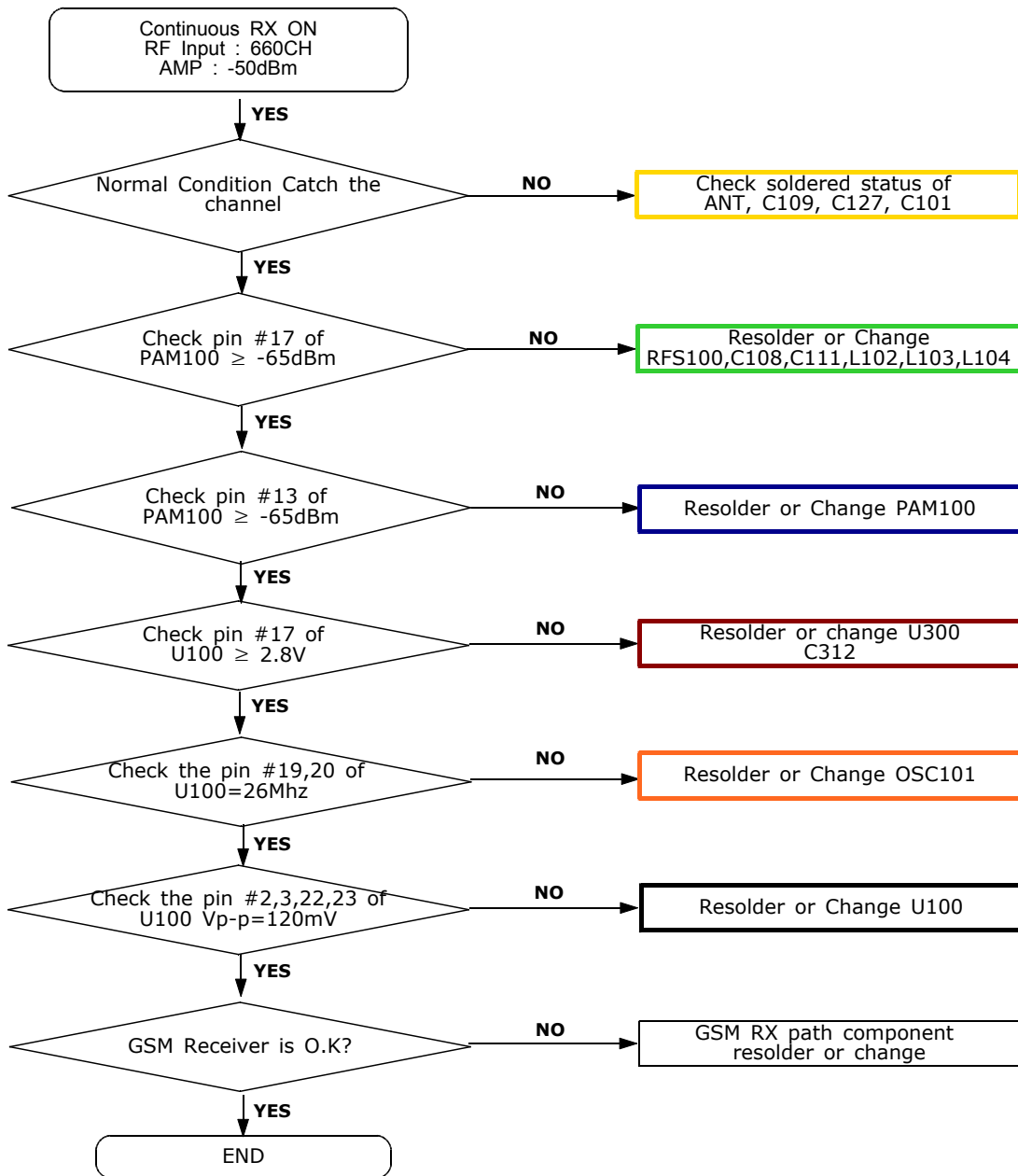
10-1-8. LCD



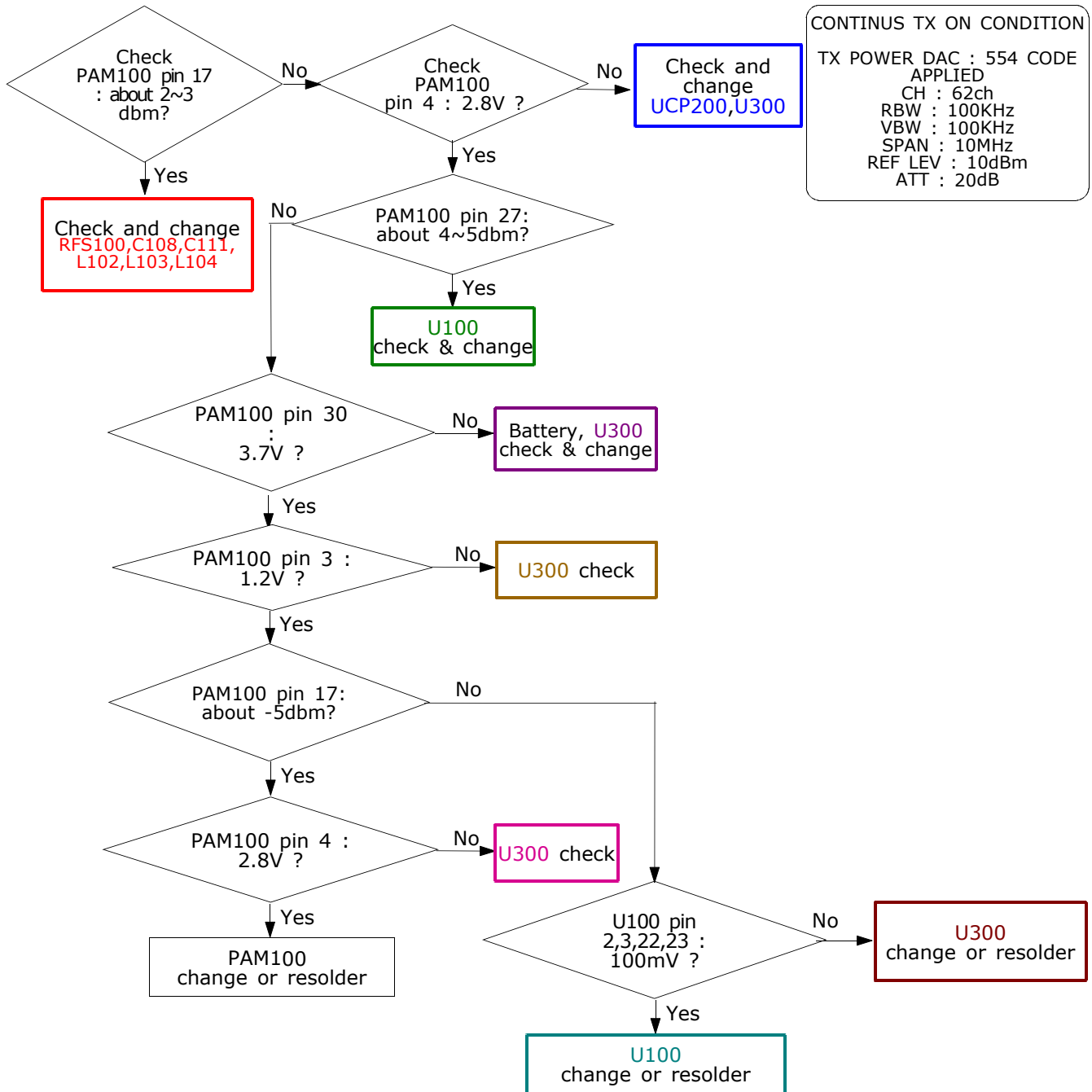
10-2.RF
10-2-1. EGSM Rx



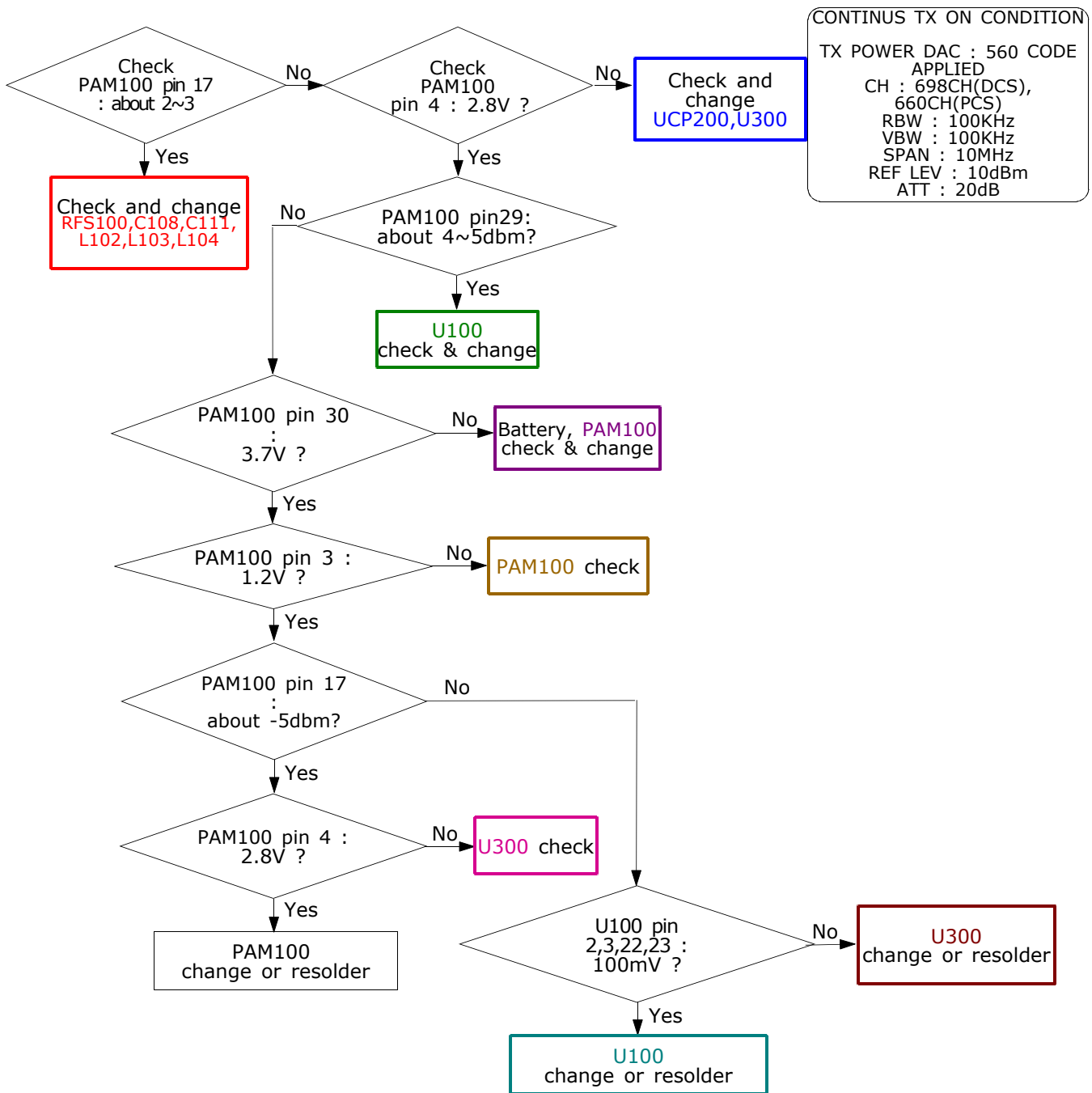
10-2-2. DCS Rx



10-2-3. EGSM Tx



10-2-4. DCS Tx



CONTINUS TX ON CONDITION
 TX POWER DAC : 560 CODE APPLIED
 CH : 698CH(DCS), 660CH(PCS)
 RBW : 100KHz
 VBW : 100KHz
 SPAN : 10MHz
 REF LEV : 10dBm
 ATT : 20dB

