
4. Array course control

4-1. Software Adjustments

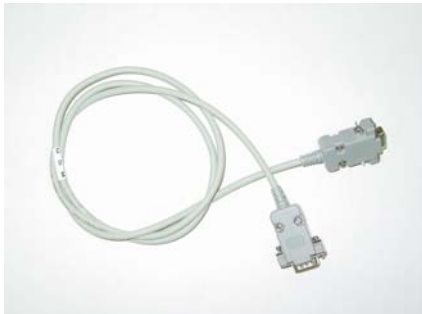
Test Jig (GH80-03306A)



Test Cable (GH39-00499A)



Serial Cable(CSA LL64151-A)



Power Supply Cable



4-2. Software Downloading

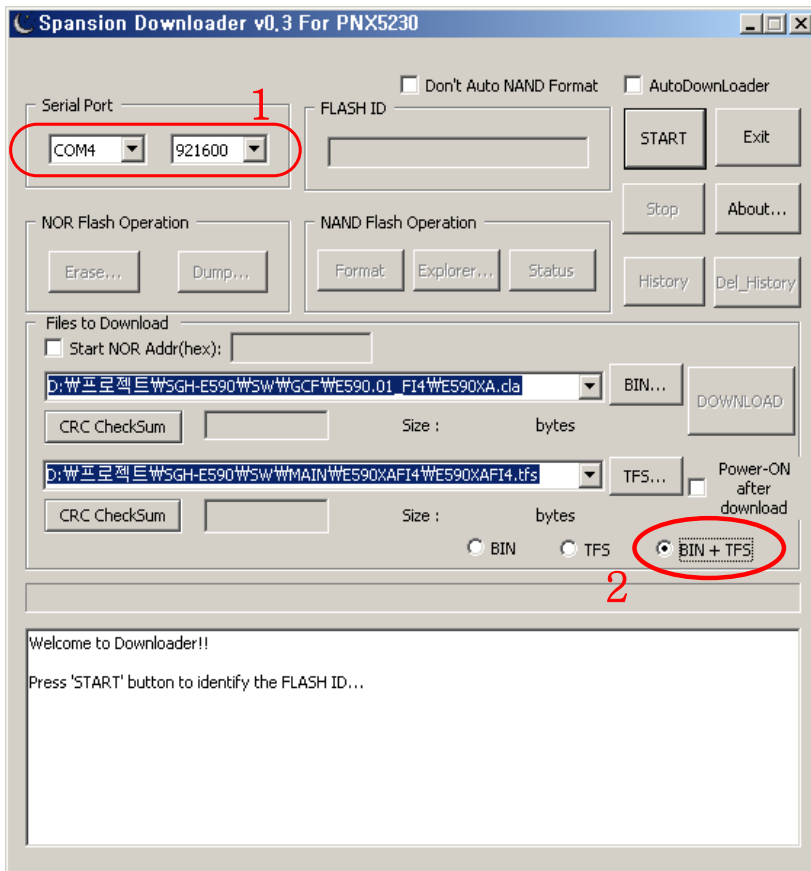
4-2-1. Pre-requisite for Downloading

- Downloader Program([Spansion Downloader v0.3 For PN5230.exe](#))
- E590 Mobile Phone
- Data Cable
- Binary file, TFS file

4-2-2. S/W Downloader Program

■ Load the binary download program by executing the “[Spansion Downloader v0.3 For PN5230.exe](#)”

1. Select the connected serial port and the rate of speed
2. Select the check box, the mode you want to download.
 - if the binary file wanted, check only 'BIN'
 - if the tfs file wanted, check only 'TFS'
 - if all the files wanted, check 'BIN+TFS'



3. Select the file(s) what you want to download

