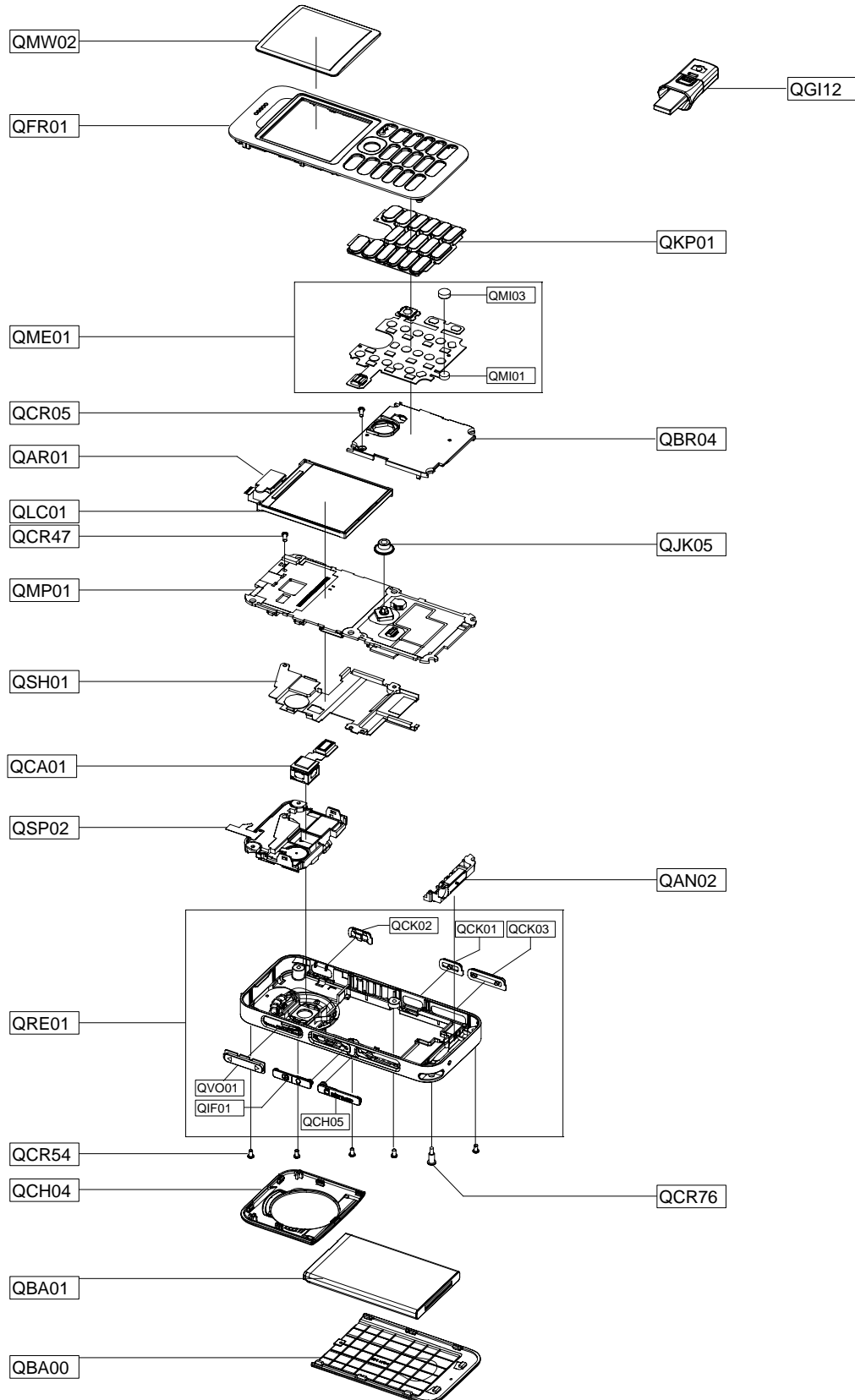


5. Exploded View/Disassembly&Assembly Instructions

5-1. Cellular phone Exploded View




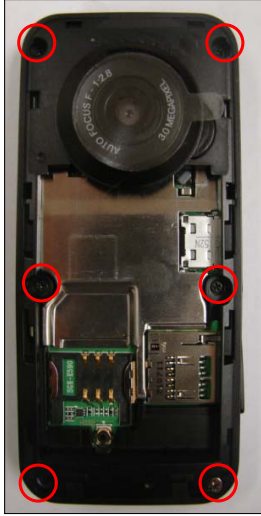

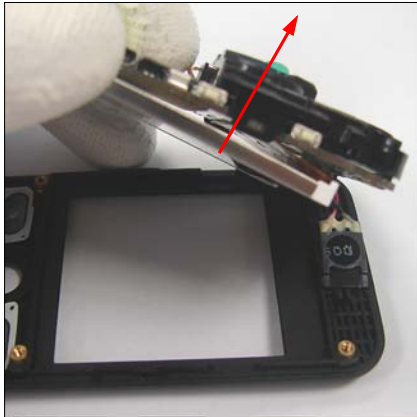
5-2. Cellular phone Parts list

Design LOC	Description	SEC CODE
QAN02	INTENNA-SGHE590	GH42-01061A
QAR01	AUDIO-RECEIVER	3009-001249
QBA00	PMO-COVER BATTERY	GH72-36223A
QBA01	INNER BATTERY PACK-800MAH,BLK,	GH43-02644A
QBR04	ASSY BRACKET-KEY	GH98-04880A
QCA01	CAMERA MODULE	GH59-03882A
QCH04	PMO-COVER CAMERA	GH72-38178A
QCH05	PMO-COVER T FLASH	GH72-36197A
QCK01	ASSY KEY-CAMERA	GH98-04001A
QCK02	ASSY KEY-MODE	GH98-04002A
QCK03	ASSY KEY-ZOOM	GH98-04003A
QCR05	SCREW-MACHINE	6001-001478
QCR47	SCREW-MACHINE	6001-001695
QCR54	SCREW-MACHINE	6001-001645
QCR76	SCREW-SPECIAL	6009-001525
QFR01	ASSY CASE-FRONT	GH98-03185A
QGI12	ASSY ACCE-BAGFOD	GH98-05701A
QIF01	PMO-COVER IF	GH72-36196A
QJK01	PMO KEY-JOG	GH72-43189A
QKP01	ASSY KEYPAD-(SER/BLK)	GH98-05189A
QLC01	LCD-LCD MODULE	GH07-01063A
QME01	KEY FPCB-MAIN KEY PBA	GH59-03881A
QMI01	AS-SGHE590 MICROPHONE	GH81-06679A
QMI03	AS-SCHF679 MIC RUBBER	GH81-06599A
QMP01	PBA MAIN-SGHE590	GH92-03377A
QMW02	PMO-MAIN WINDOW MOLD	GH72-36226A
QRE01	ASSY CASE-REAR	GH98-03184A
QSH01	ASSY COVER-SHIELD CAN	GH98-03998A
QSP02	MODULE SPEAKER	GH59-03923A
QVO01	ASSY KEY-VOLUME	GH98-03999A

Description	SEC CODE
CBF INTERFACE-DATA LINK CABLE	GH39-00444A
ADAPTOR-SGHE690,BLK,EU,A_TYPE	GH44-01361A
SPONGE-MOTOR	GH74-33388A
SPONGE	GH74-33389A
LABEL(R)-WATER SOAK	GH68-09361A
TAPE GASK	GH74-33672A
TAPE GASK	GH74-33673A
TAPE-CAMERA KEY	GH74-33957A
TAPE GASK	GH74-33958A
MPR-VINYL BOHOMAIN WINDOW 2	GH74-30616A
SPONGE	GH74-33128A
SPONGE	GH74-34145A
LABEL(P)-UNIT SEAL	GH68-00518B
LABEL(R)-MAIN(EU)	GH68-14087A
BOX-UNIT(EU)	GH69-05133A
S/W CD-SGHE590 PC LINK CD	GH46-00411A
MANUAL USERS-EU ENGLISH	GH68-14202A
MANUAL USERS-EU RUSSIAN	GH68-14203A
EARPHONE-SGHU600,HEADSET,BLK,A	GH59-04446A
VINYL-BOHO MAIN WINDOW	GH74-33923A

5-3. Disassembly and Assembly Instructions

5-3-1. Disassembly

<p>1</p> <p>1) Disassemble the CAMERA COVER from the REAR using a disassembly stick.</p> 	<p>2</p> <p>1) Unscrew the REAR at the 6 points.</p> 
<p>1) Be careful not to make scratch. 2) Please remove the Camera cover locker first.</p> <p>1) Be careful not to make scratch and molding damage!</p>	
<p>3</p> <p>1) Disassemble the REAR.</p> 	<p>4</p> <p>1) Detach the RECEIVER from the FRONT. 2) Disassemble the PBA ASS'Y from the FRONT.</p> 
<p>1) Be careful not to make scratch and molding damage! 2) Please remove the REAR locker first.</p> <p>1) Be careful not to damage Receiver. 2) Be careful not to make scratch and molding damage!</p>	

5

1) Detach the JOG KEY from the PBA ASS'Y.



- 1) Be careful not to damage LCD.
- 2) Be careful not to make scratch and molding damage!

6

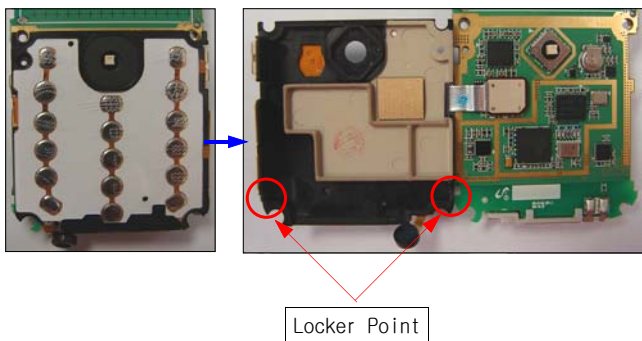
1) Unscrew the PBA ASS'Y at the 2 points.



- 1) Be careful not to damage LCD.
- 2) Be careful not to make scratch and molding damage!

7

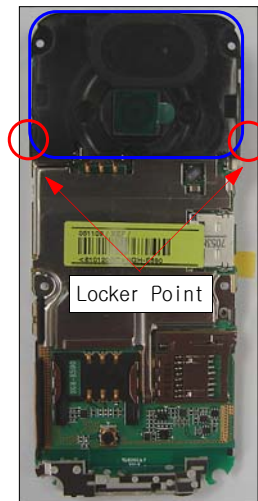
1) Disassemble the KEY BRACKET from the PBA ASS'Y.



- 1) Please remove the key bracket locker first.
- 2) Be careful not to damage locker.

8

1) Disassemble the SPEAKER MODULE from the PBA ASS'Y.



- 1) Please remove speaker module locker first.
- 2) Be careful not to make scratch and molding damage!

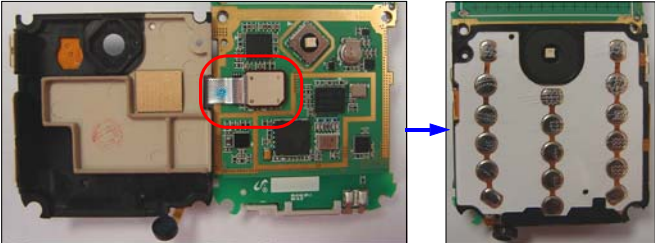

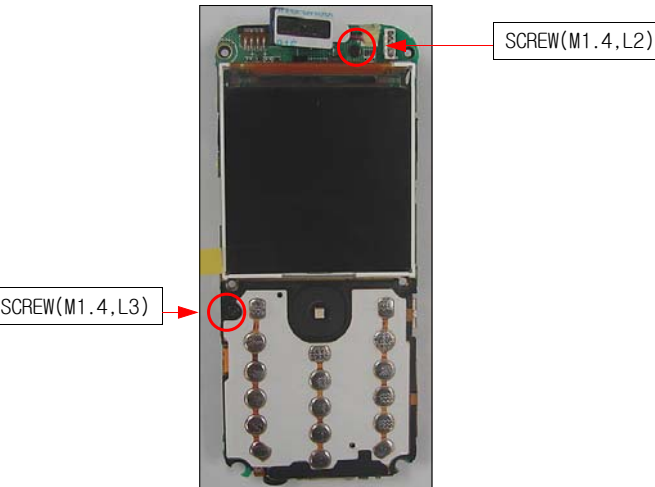
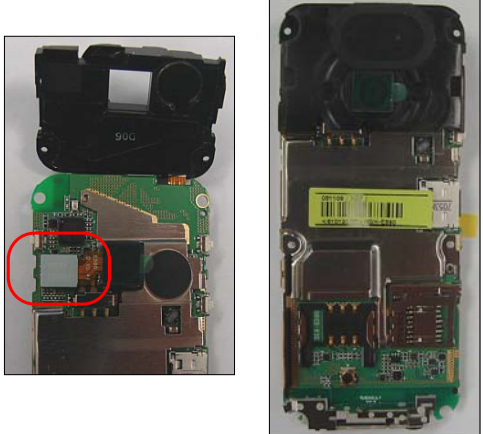
9

1) Detach the SHIELD CAN from the PBA ASS'Y.



- 1) Be careful not to damage PBA ASS'Y.
- 2) Be careful not to make scratch and molding damage!

5-3-2. Assembly

<p>1</p> <p>1) Joint CON to CON KEY FPCB with the PBA ASS'Y.</p> 	<p>2</p> <p>1) Insert the MIC into the INTENNA.</p> 
<p>1) Be careful not to make scratch and molding damage!</p>	<p>1) Be careful not to make scratch and molding damage! 2) Be careful not to damage the MIC F-PCB.</p>
<p>3</p> <p>1) Assemble SHIELD CAN with PBA ASS'Y. 1) Screw the PBA ASS'Y at 2 point.</p> 	<p>4</p> <p>1) Joint CON to CON CAMERA FPCB with the PBA ASS'Y. 2) Assemble SPEAKER MODULE with PBA ASS'Y.</p> 
<p>1) Check the SCREW SIZE. (M1.4,L2 and M1.4,L3) 2) Be careful not to make scratch and molding damage! 3) USE TORQUE : 0.9 ~ 1.1 Kgf.cm</p>	<p>1) Please remove speaker module locker first. 2) Be careful not to make scratch and molding damage!</p>

5

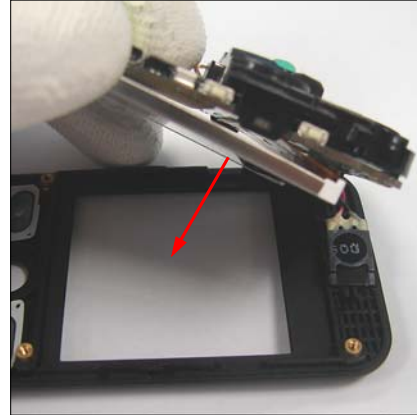
1) Attach the JOG KEY on the KEY BRACKET.



1) Be careful not to make scratch and molding damage!

6

1) Insert the KEYPAD into FRONT.
2) Attach the RECEIVER on the FRONT.
3) Assemble PBA ASS'Y with FRONT.



1) Be careful not to make scratch and molding damage!

7

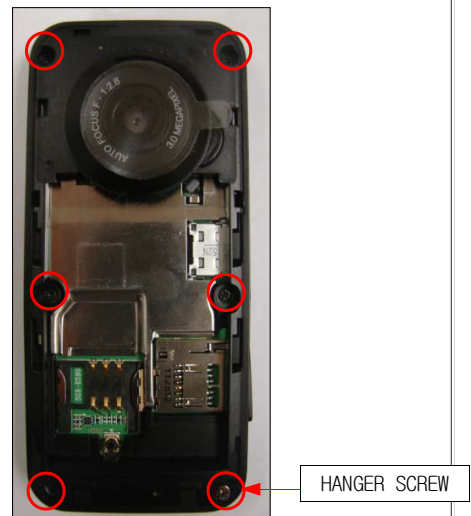
1) Assemble FRONT with REAR.



1) Be careful not to make scratch and molding damage.
2) Be careful not to damage LCD F-PCB.

8

1) Screw the REAR at the 6 points.



1) Check the SCREW SIZE.(HANGER SCREW and M1.4,L5)
2) Be careful not to make scratch and molding damage.
3) USE TORQUE : 0.9 ~ 1.1 Kgf.cm

9

1) Assemble CAMERA COVER with SET.



1) Be careful not to make scratch and molding damage!

