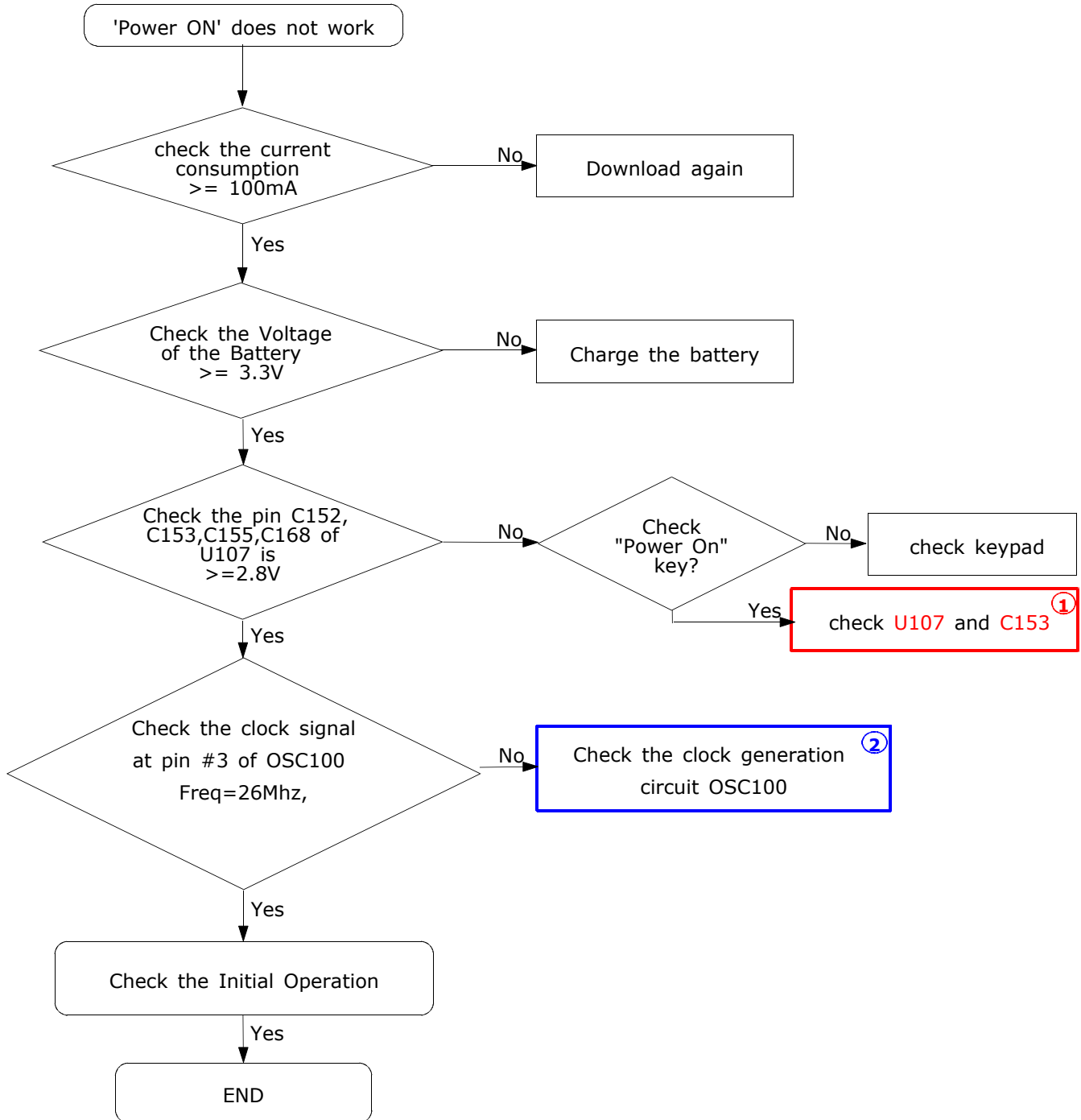
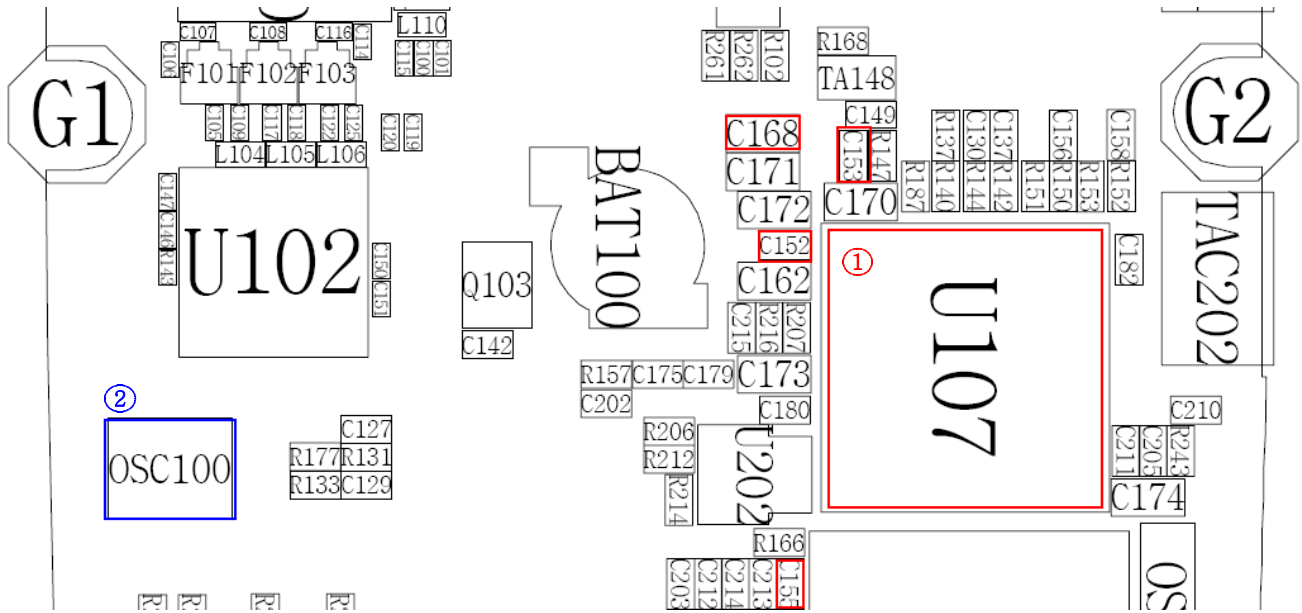
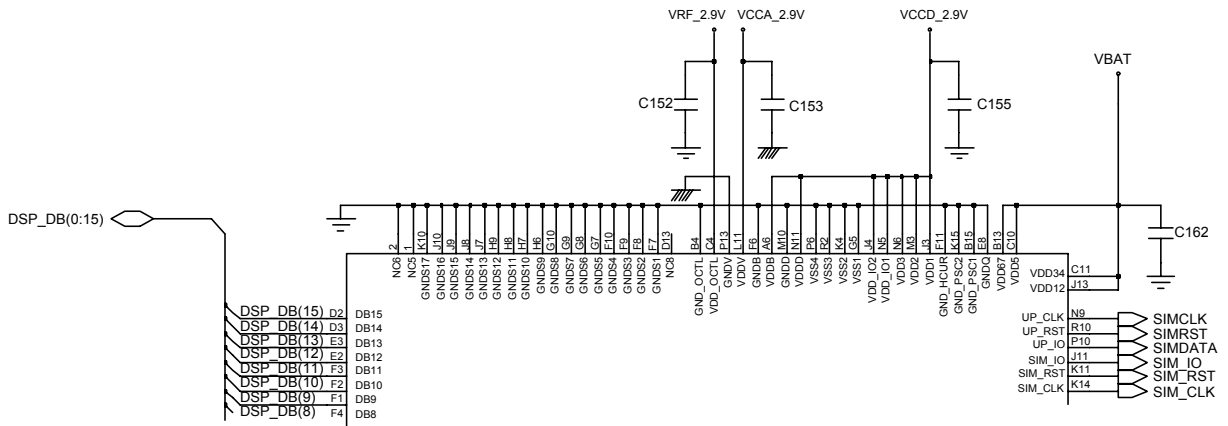


2. SGH-X150 Flow Chart of Troubleshooting

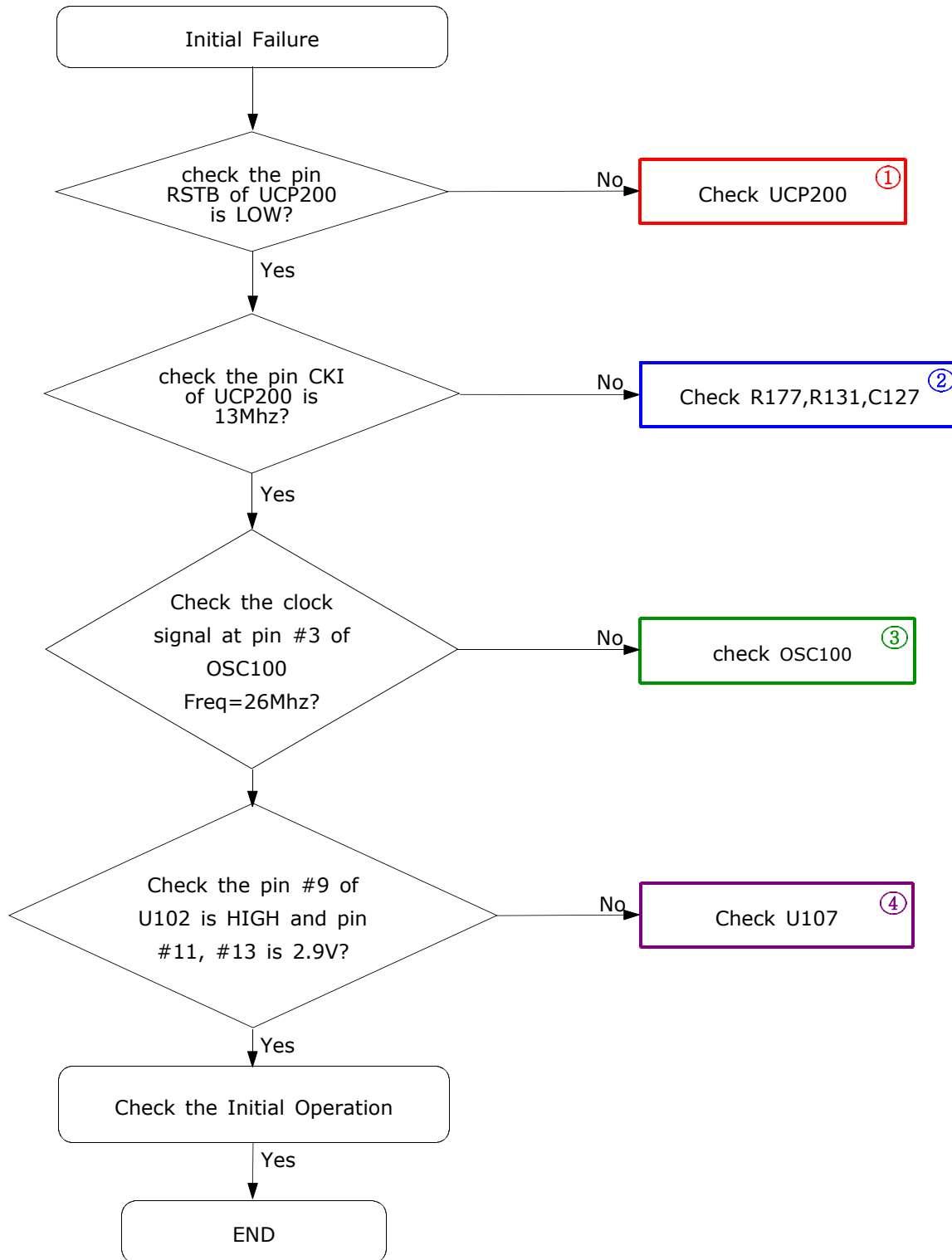
2-1. BASEBAND

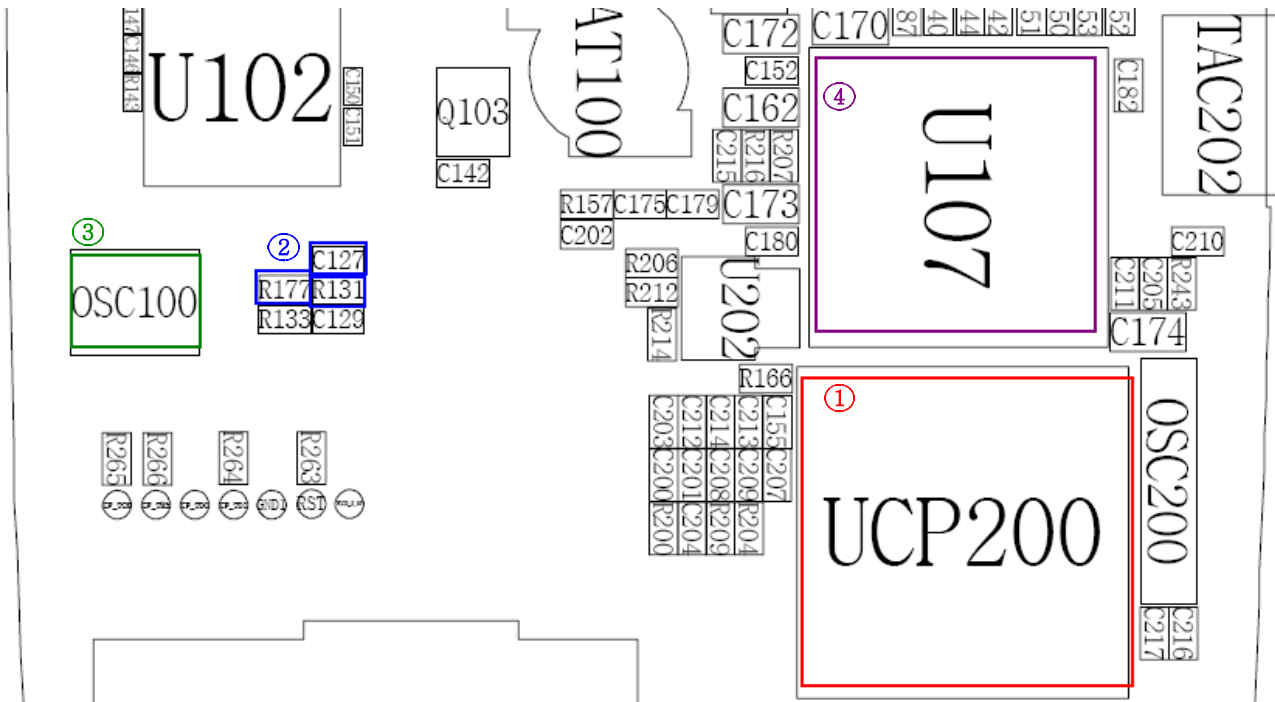
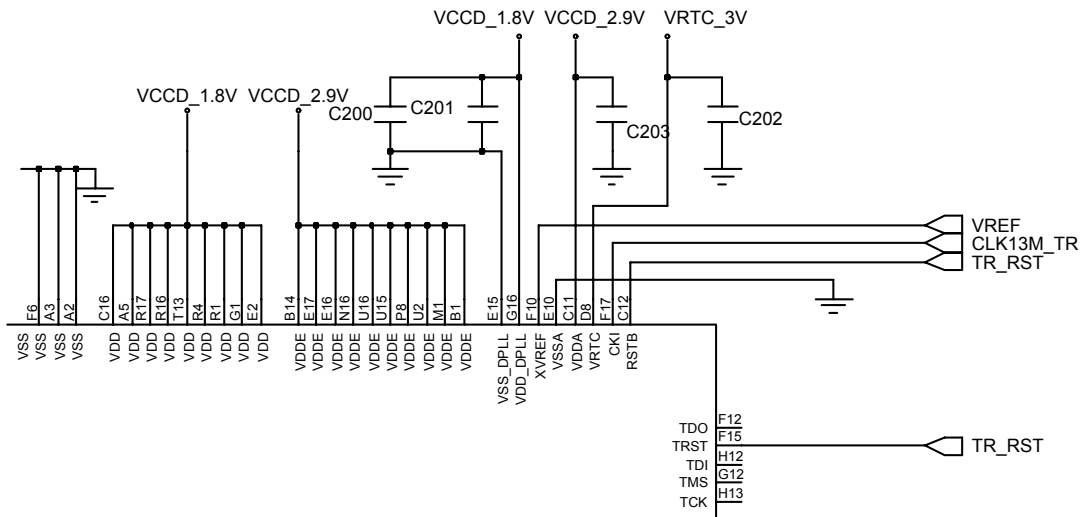
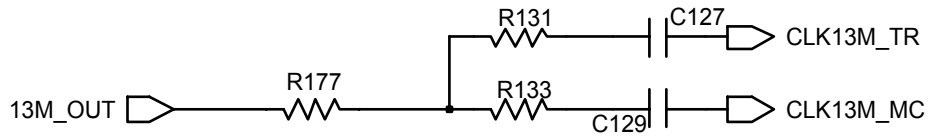
2-1-1. Power ON



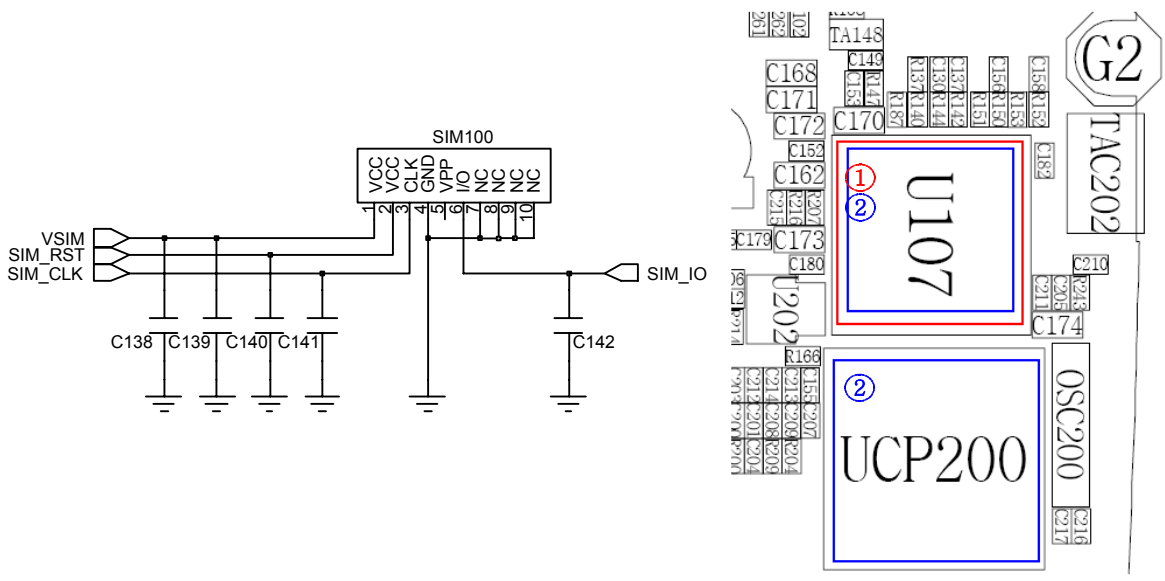
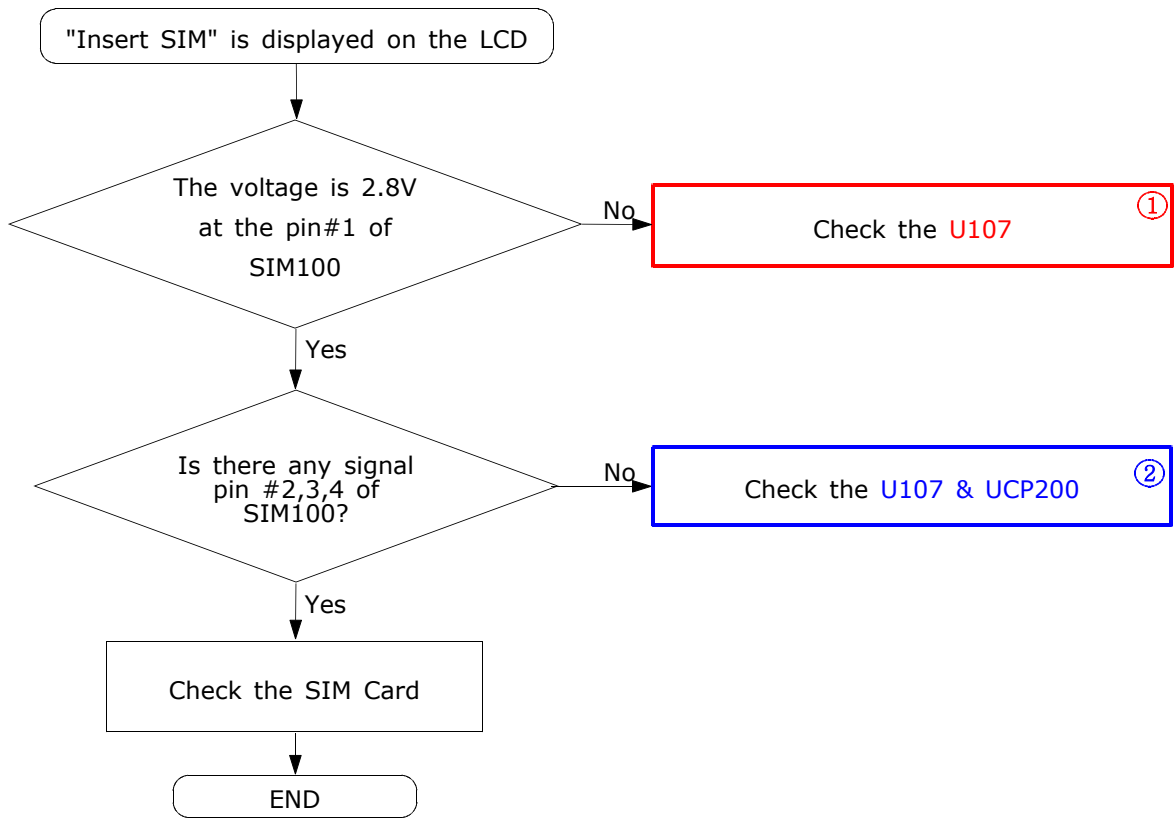


2-1-2. Initial



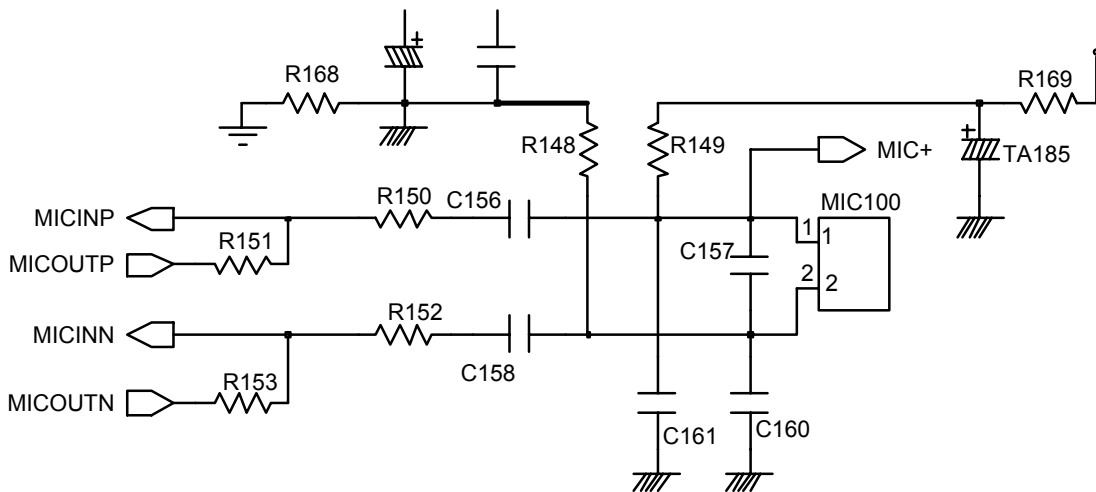
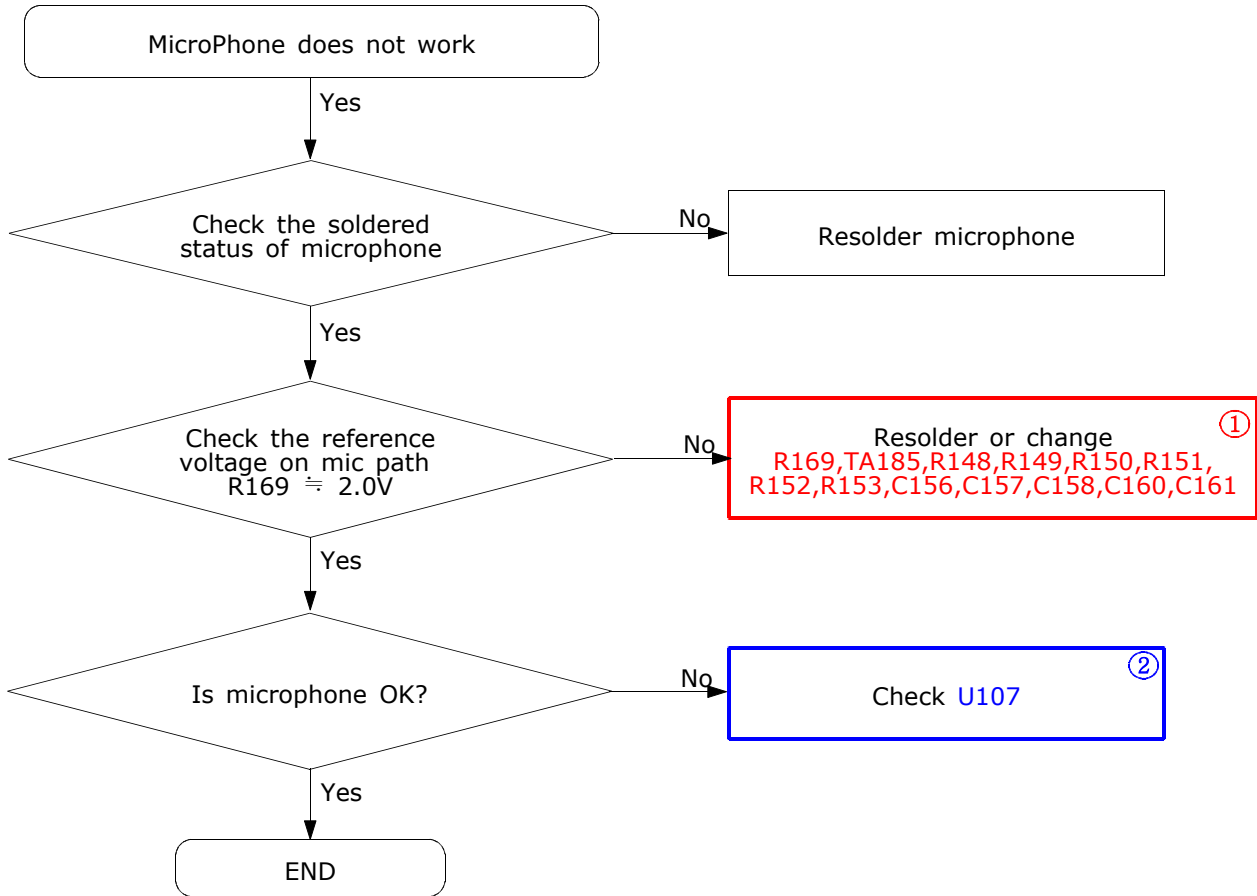


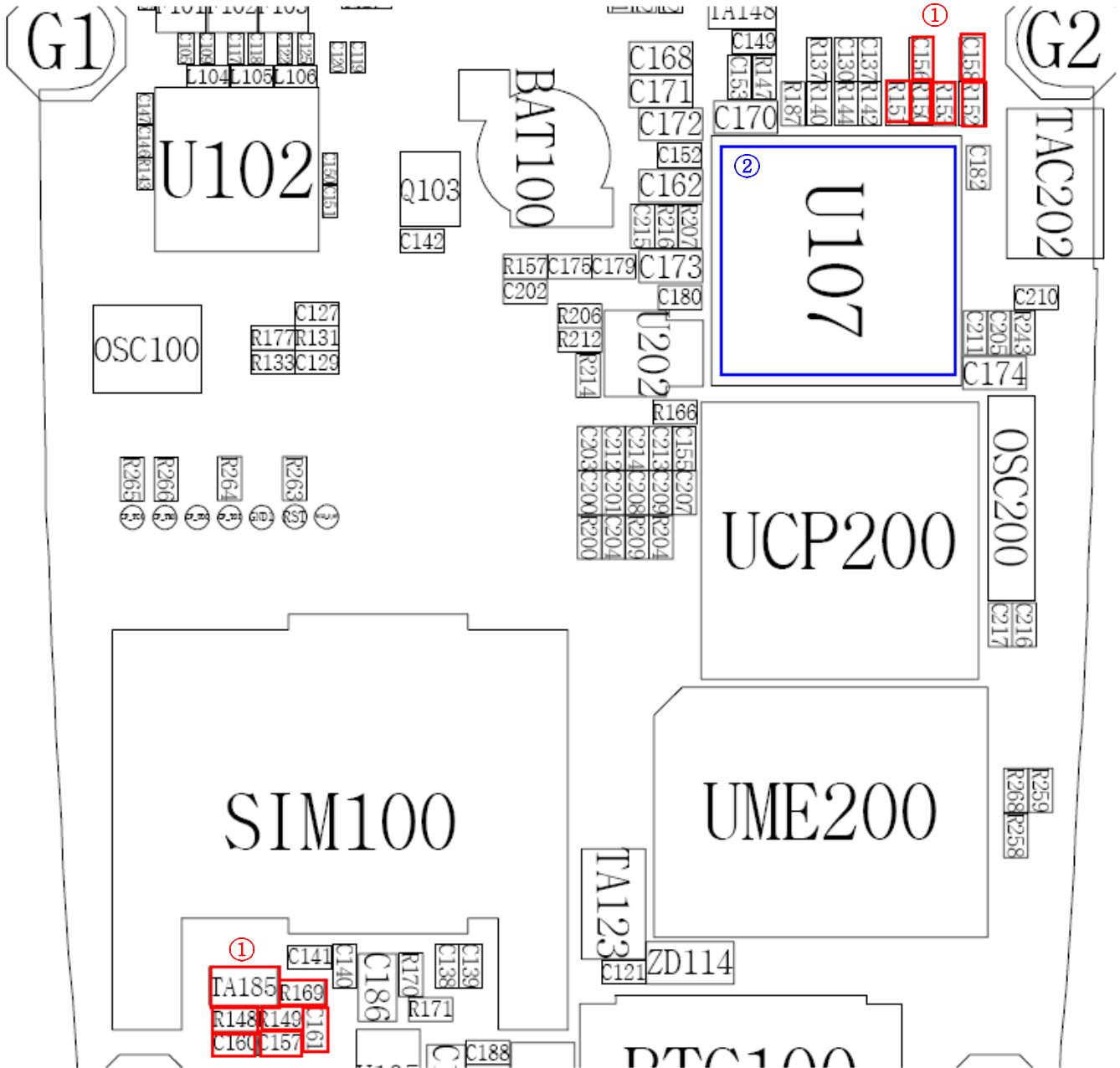
2-1-3. Sim Part



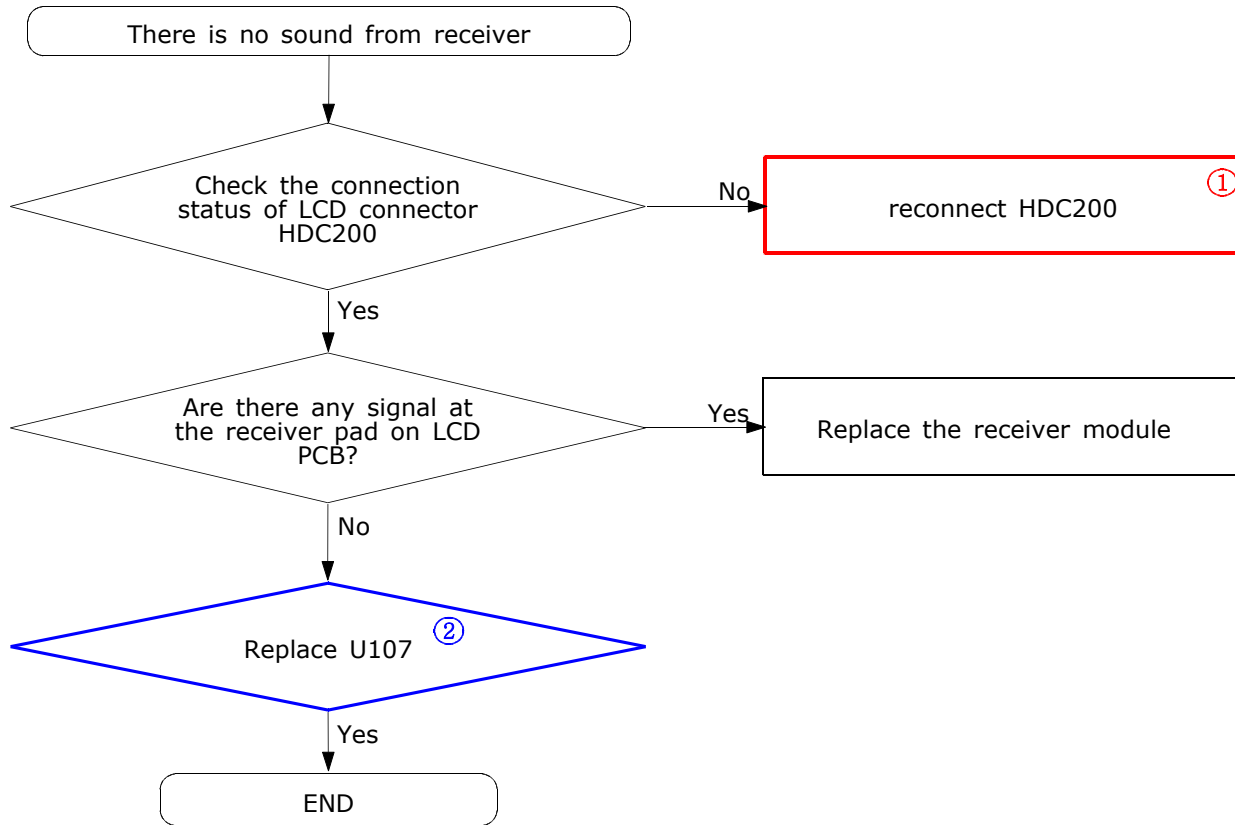
2-1-4. Microphone Part

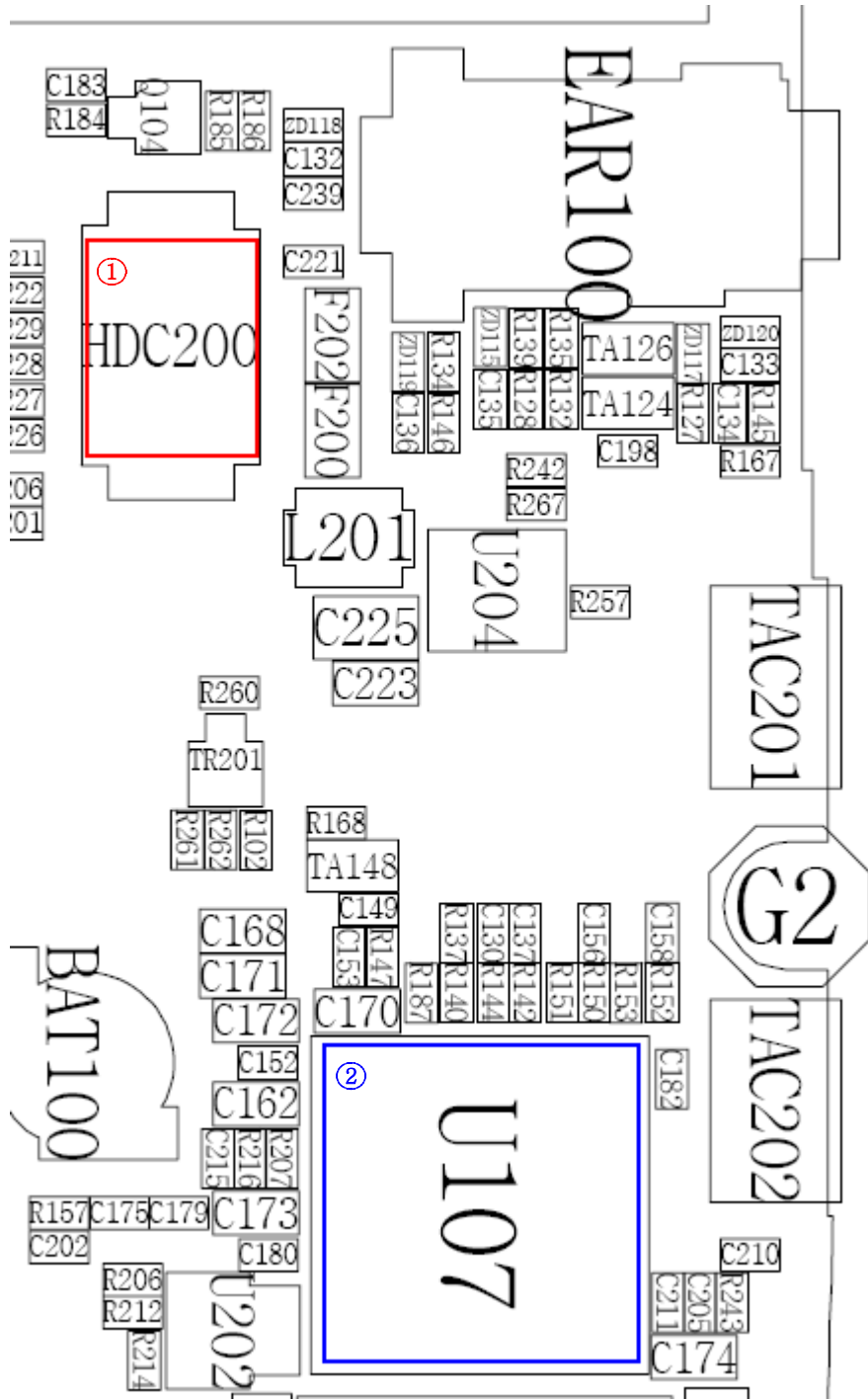
* Call with Sim before testing.



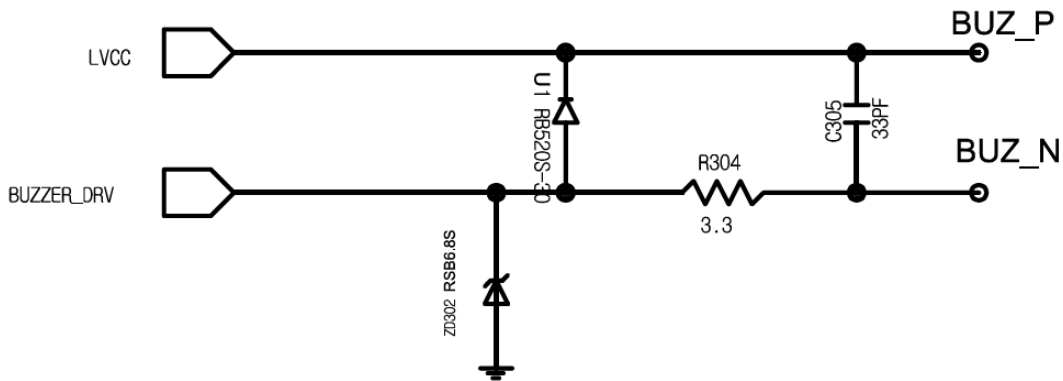
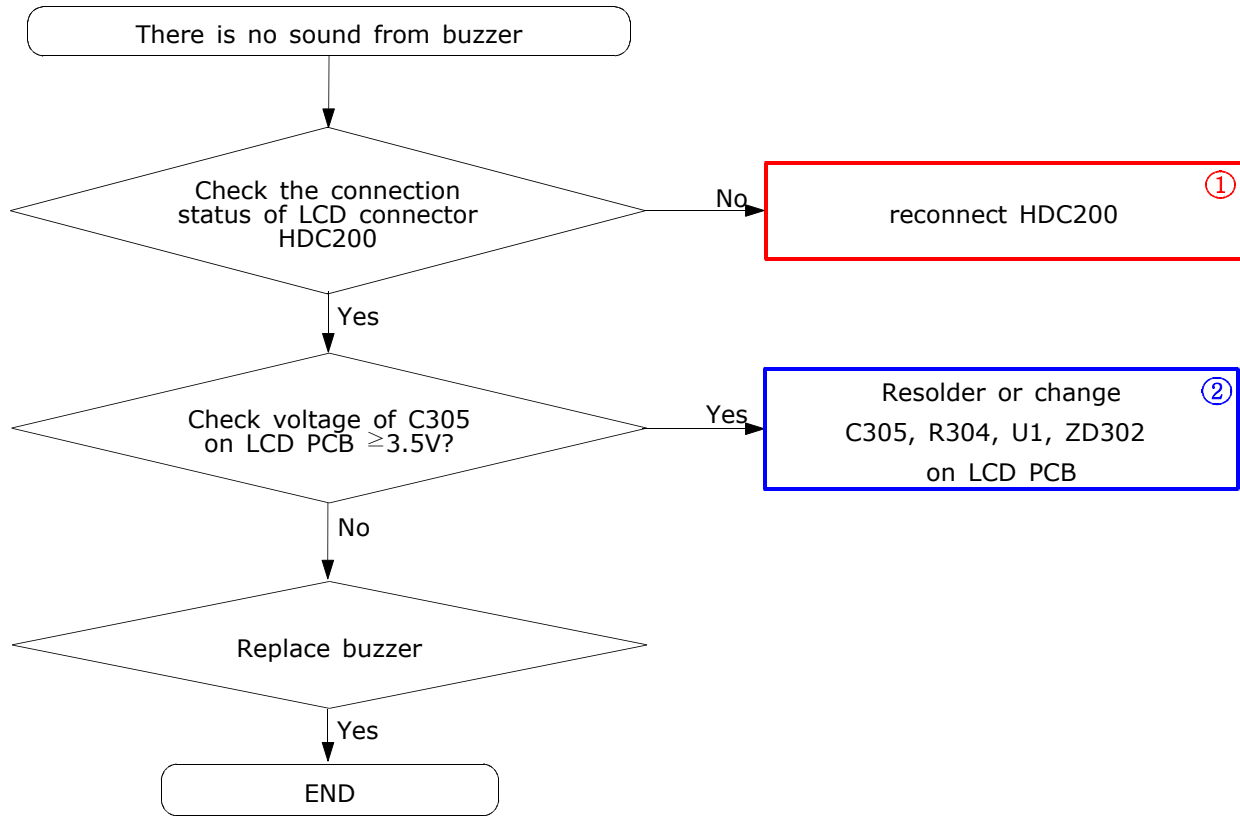


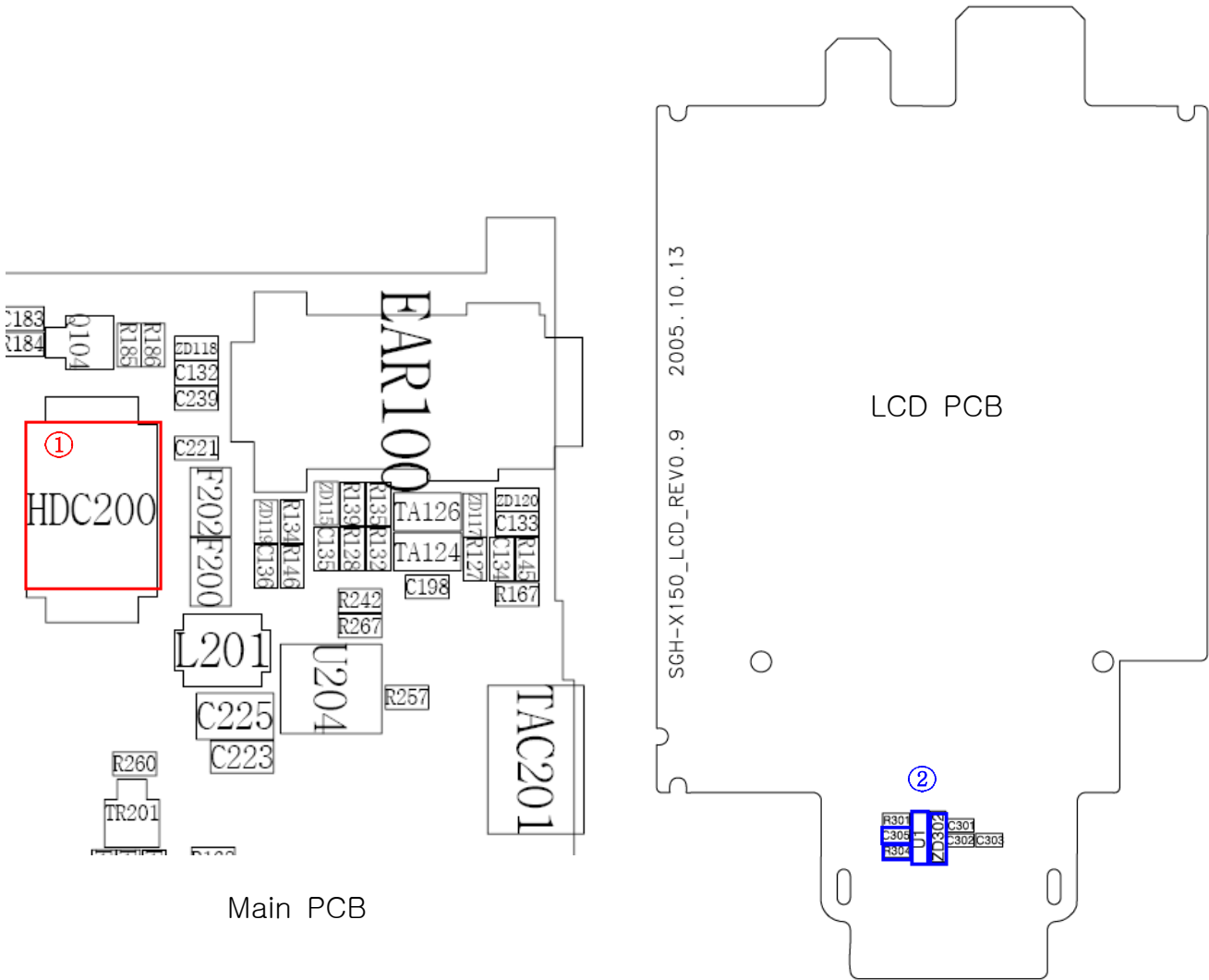
2-1-5. Receiver Part



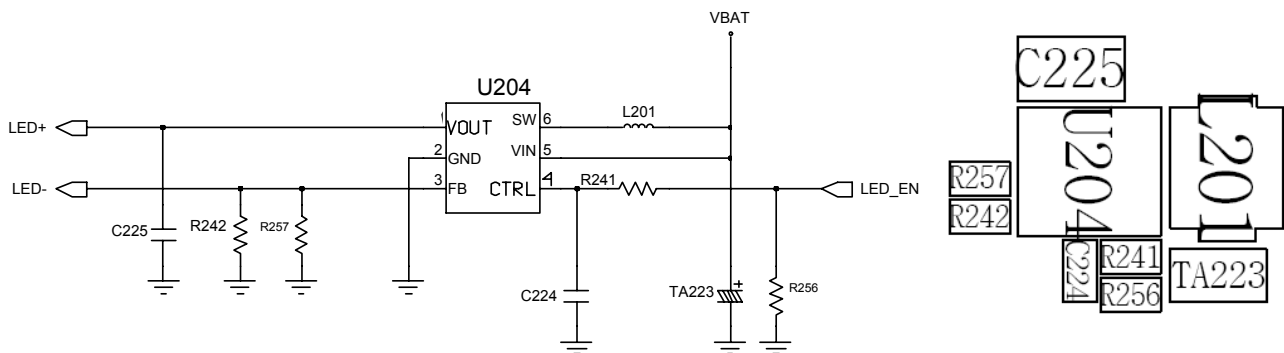
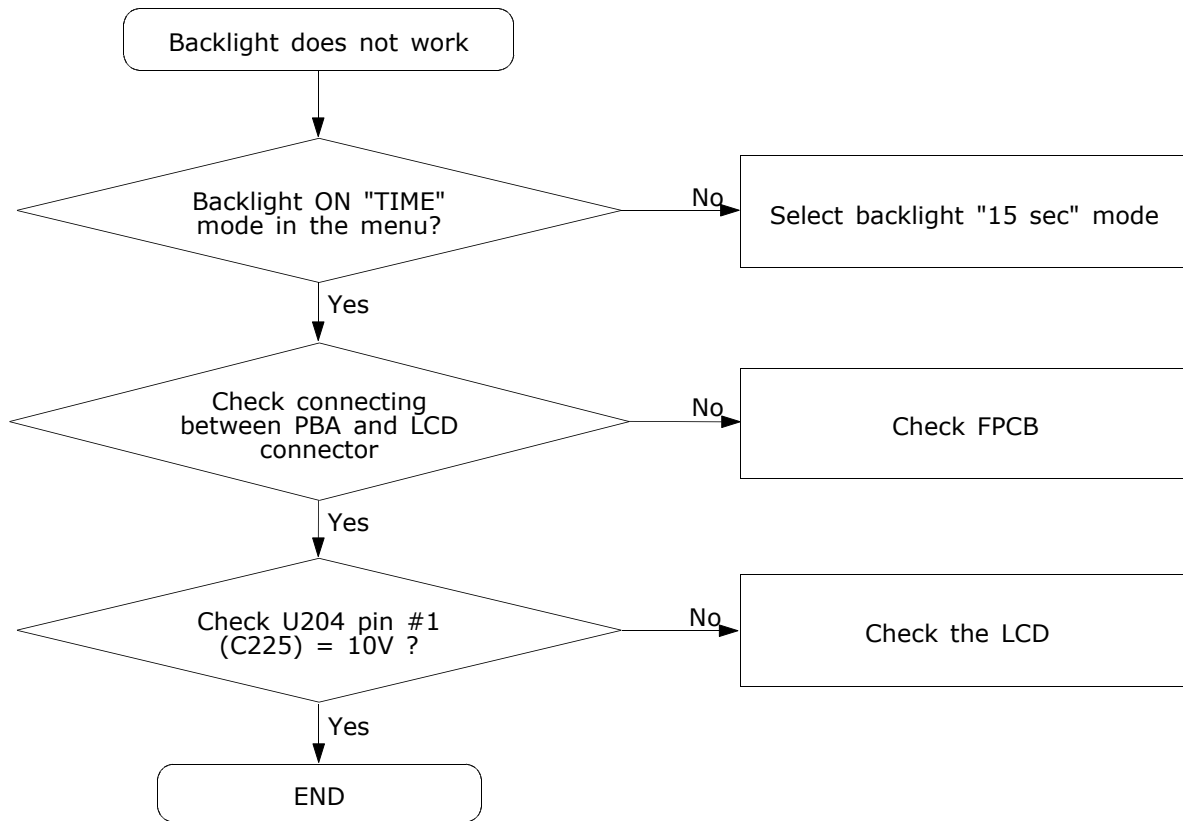


2-1-6. Buzzer Part



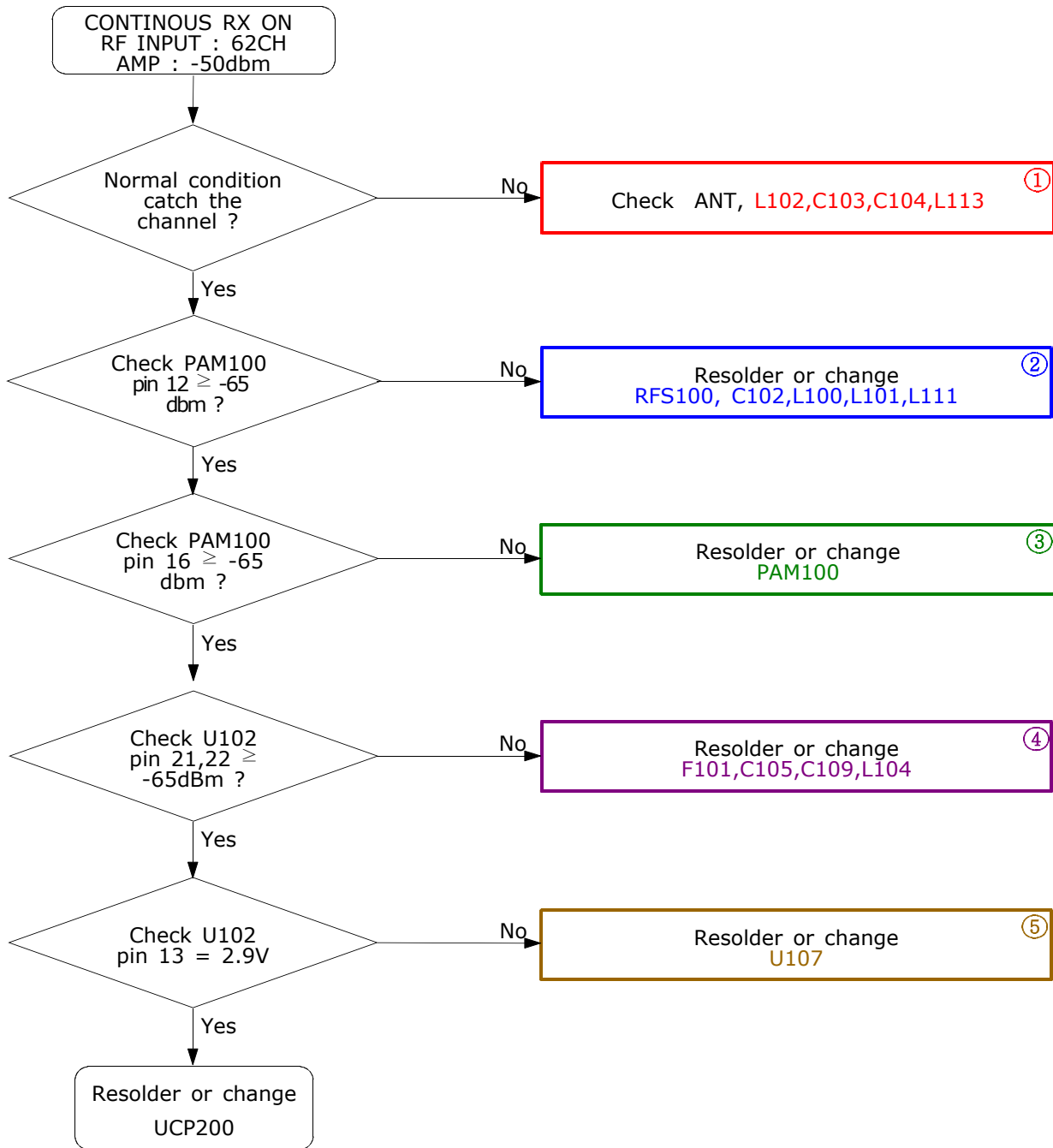


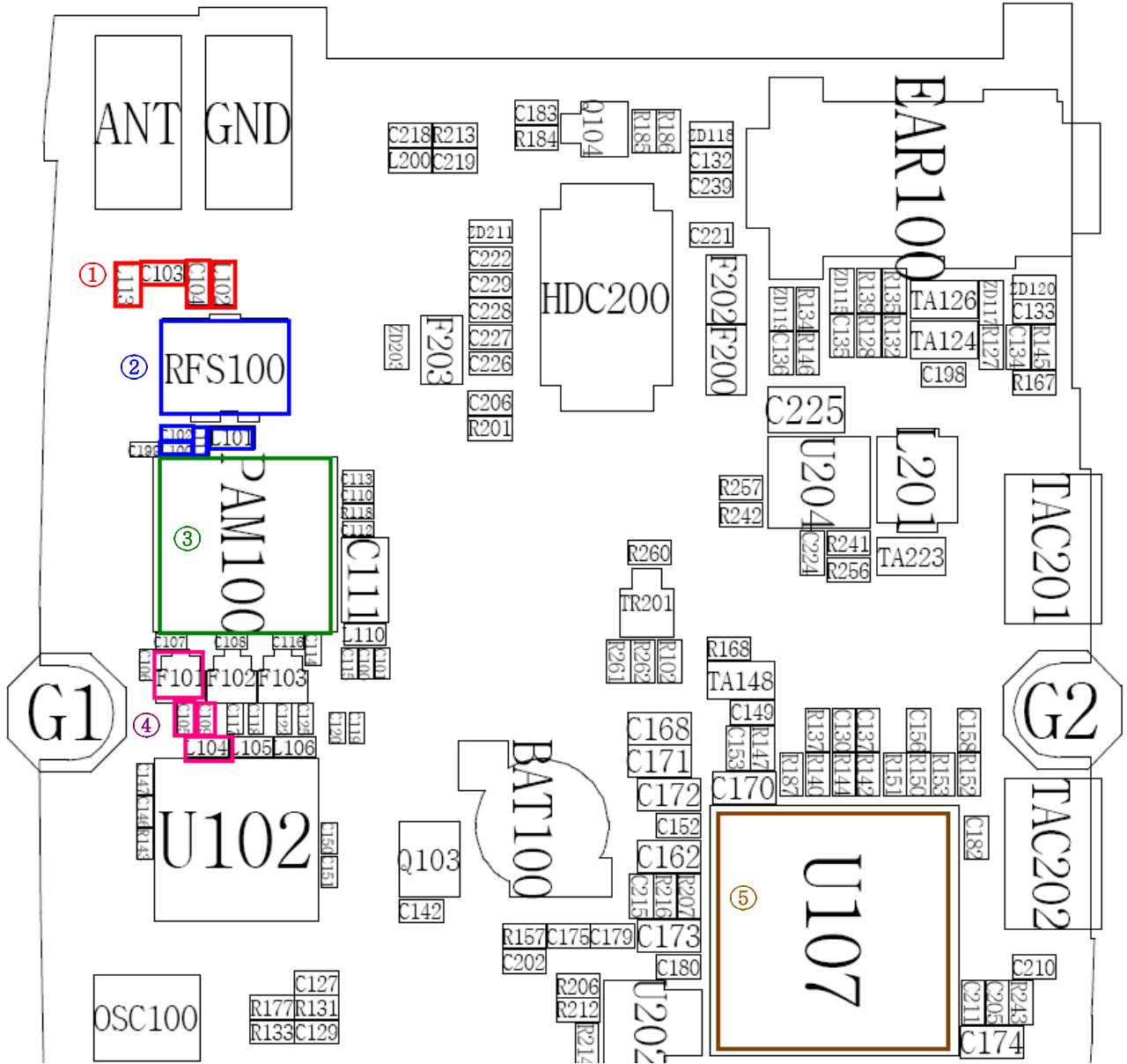
2-1-7. LCD backlight



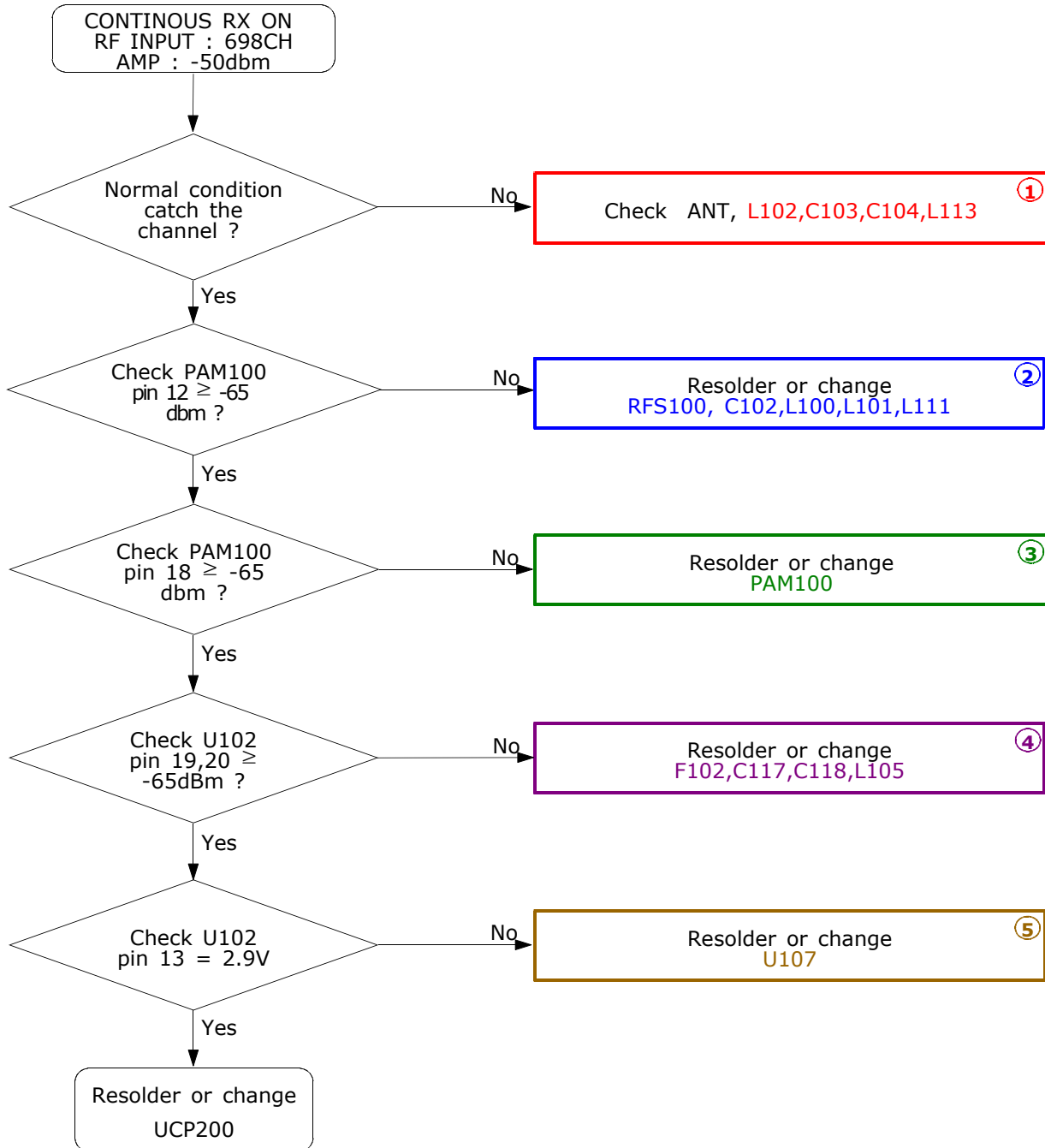
2-2. RF

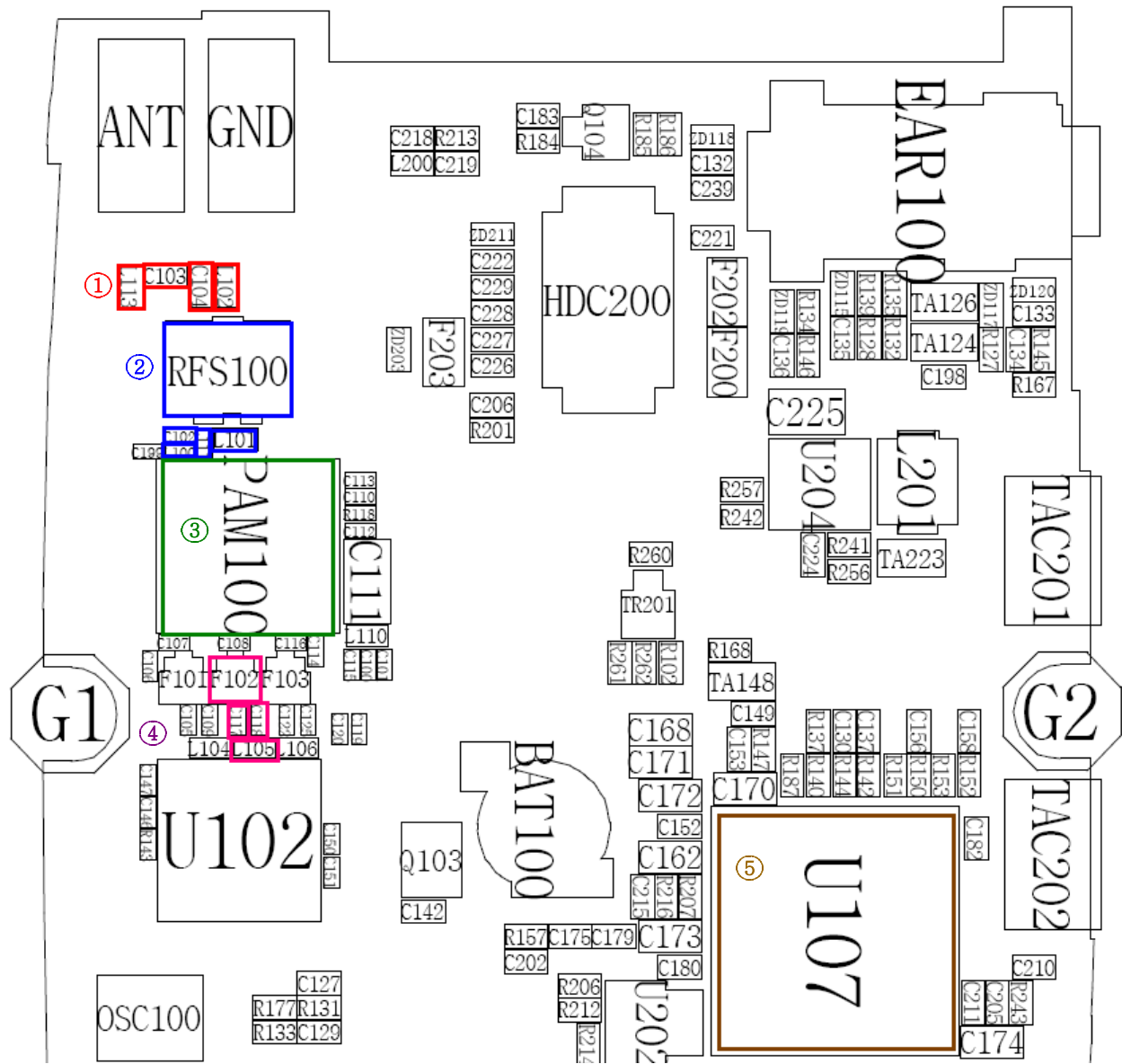
2-2-1. GSM Rx



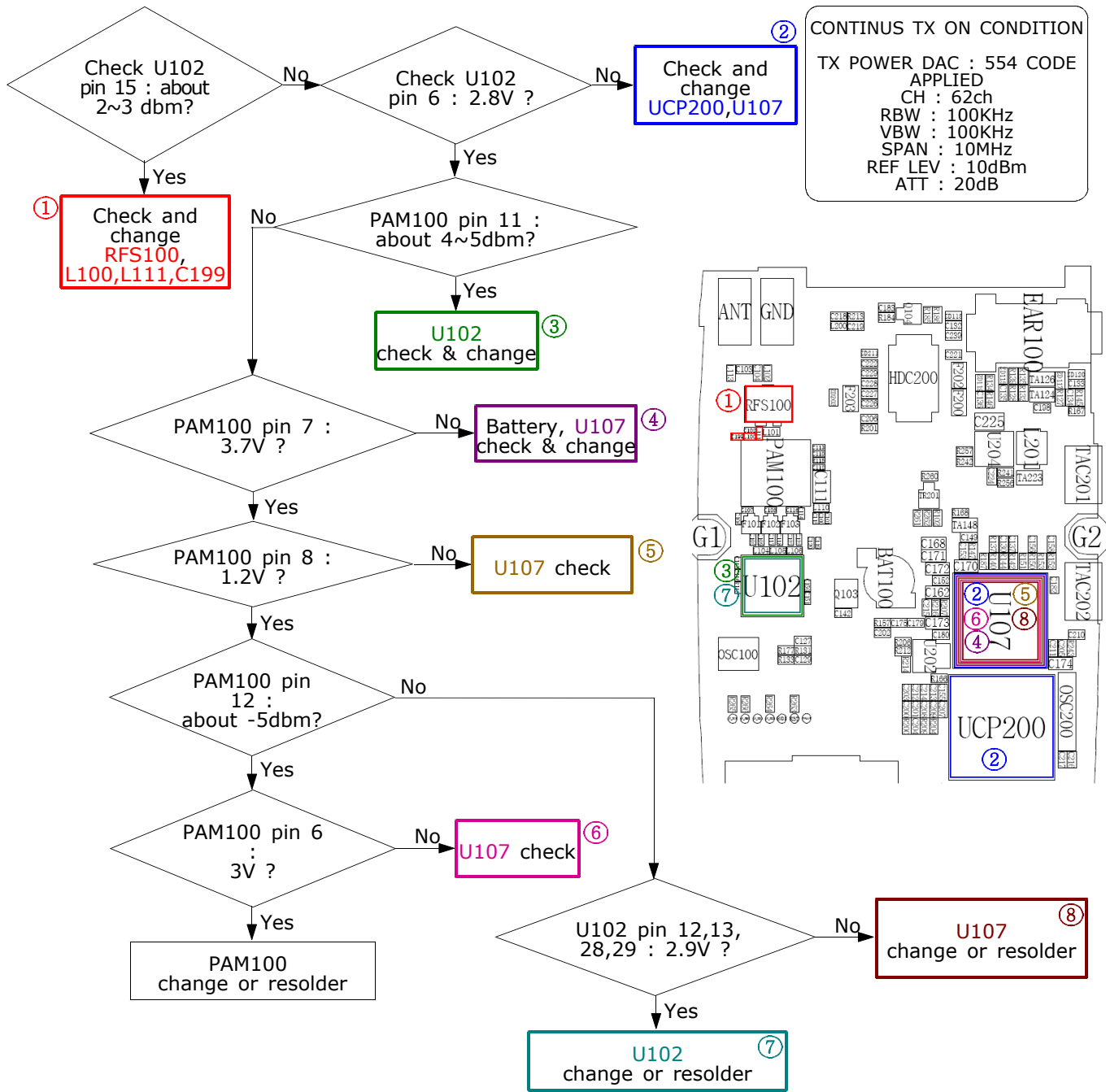


2-2-2. DCS Rx





2-2-3. GSM Tx



2-2-4. DCS Tx

