



Working Instruction, Mechanical

Applicable for k660i

CONTENTS

- 1 Introduction 3**
- 1.1 Equipment..... 4**
- 1.2 General cautions 5**
- 1.3 Adhesives 5**
- 2 Disassembly 6**
- 2.1 Overview 6**
 - 2.1.1 Battery Cover & Battery..... 7
 - 2.1.2 Camera Ring Assembly..... 8
 - 2.1.3 Antenna Cover Assy & Back Cover Assembly 9
 - 2.1.4 Front Cover 10
 - 2.1.5 Main Keypad 11
 - 2.1.6 PCBA Assy & Main Frame Assembly..... 12
 - 2.1.7 LCD Frame Assy..... 13
- 3 Replacements..... 14**
 - 3.1 Battery Cover & Battery..... 15**
 - 3.2 Camera Ring Assembly 15**
 - 3.3 Antenna Cover Assy & Back Cover Assembly..... 15**
 - 3.4 Front Cover 15**
 - 3.5 Main Keypad 15**
 - 3.6 PCBA Assy & Main Frame Assembly 15**
 - 3.7 LCD Frame Assy..... 15**
 - 3.8 Camera Key..... 16**
 - 3.9 Camera 2Mega Pixel & 2.0 Pixel Camera Shield 17**
 - Camera 2Mega Pixel & 2.0 Pixel Camera Shield *continued*..... 18**
 - Camera 2Mega Pixel & 2.0 Pixel Camera Shield *continued*..... 19**
 - 3.10 QCIF VGA Camera..... 20**
 - 3.11 Receiver “Ear Speaker” 22**
 - 3.12 Keyfoil Dome Assy & LCD..... 23**
 - 3.13 M2 Cover 26**
 - 3.14 On/Off Key..... 27**
 - 3.15 System Connector with Bluetooth Antenna 28**
 - 3.16 Vibrator..... 29**
 - 3.17 Volume Key..... 30**
 - 3.18 Camera lens Assembly 31**
 - 3.19 BB Shielding Cover..... 32**



3.20 Gasket Tape Near Sim Reader	33
3.21 Function Key Conductive Gasket	34
3.22 VGA Camera Gasket	35
3.23 Cushion 0, mmnon_conductive Instructions	36
3.24 Camera Protective Tape	37
3.25 Receiver Conductive Gasket.....	38
3.26 Antenna Assy	39
3.27 Speaker Box Assembly.....	40
3.28 Liquid Intrusion Indicator	41
3.29 KRH Label	42
4 Reassembly	43
4.1 Overview	43
4.1.1 LCD Frame Assy	44
4.1.2 PCBA Assy & Main Frame Assembly.....	45
4.1.3 Main Keypad	46
4.1.4 Front Cover	47
4.1.5 Antenna Cover Assy & Back Cover Assembly	48
4.1.6 Camera Ring Assembly.....	49
4.1.7 Battery & Battery Cover.....	50
5 Revision history	51

1 Introduction

FRONT



BACK



1.1 Equipment

SPECIAL TOOLS

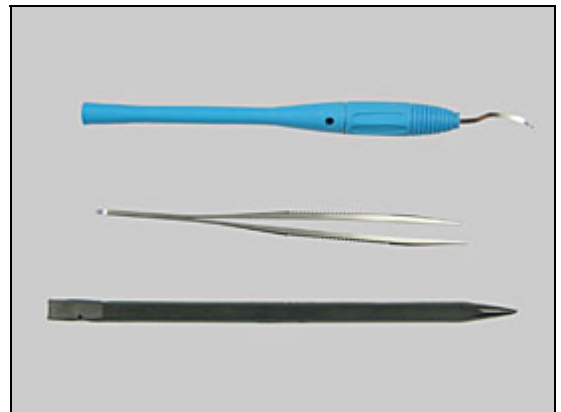
- NTZ 112 459 Torque screwdriver (or equivalent)
- NTZ 112 288 Torx bit no. 6
- NTZ 112 1052 Bits(JCIS No 0)
- NTZ 112 302/2 Front opening tool
- NTZ 112 1067 Mega Camera Tool
- NTZ 112 1077 VGA Camera Tool
- NTZ 112 590 Guitar Pick "Plectrum"



STANDARD TOOLS

Standard tools text:

- Dentist hook
- ESD tweezers
- Nylon Pointer



ESD EQUIPMENT

Protect the phone from ESD damages whenever it has been opened by using:

- ESD-wristband
- ESD-gloves



LABEL EQUIPMENT

The following special equipment is required when replacing or installing a new label:

- Hot air flow solder station
- Zebra printer connected to computer



1.2 General cautions

The following cautions are considered to be generic for all phone models and will not be repeated in the Disassembly, Replacements and Reassembly sections:

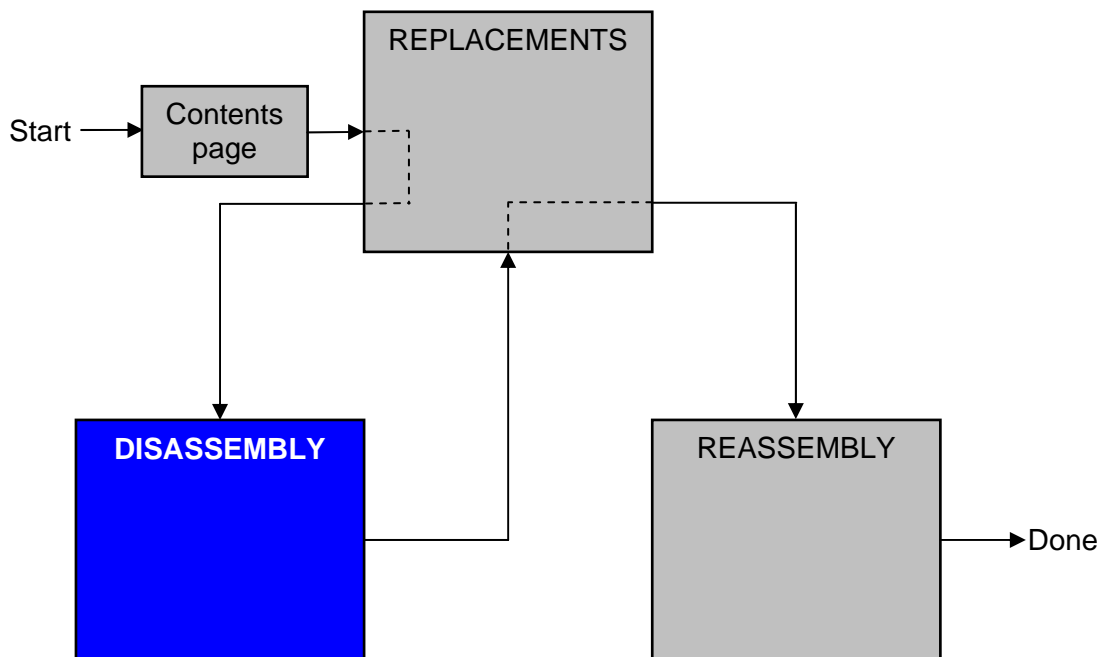
- **SWITCH OFF THE PHONE AND REMOVE ANY MEMORY STICK BEFORE THE START OF THE DISASSEMBLY!**
- **KEEP ALL CONTACT SURFACES CLEAN!**
- **BE CAREFUL WHEN USING TOOLS LIKE THE DENTIST HOOK, TWEEZERS, OPENING TOOLS, GUITAR PICK ETC. TO AVOID SCRATCHES OR DAMAGES TO THE EXTERIOR AND INTERIOR PARTS OF THE PHONE!**
- **BE CAREFUL NOT TO DAMAGE ANY CONTACT SPRINGS!**
- **REMEMBER TO REMOVE THE PROTECTION FOILS ON NEW PARTS SUCH AS THE FRONT COVER AND LCD!**
- **NEVER TOUCH THE DISPLAY GLASS!**
- **USE AIR BLOW EQUIPMENT TO KEEP THE FRONT WINDOW AND DISPLAY MODULE DUST FREE!**

1.3 Adhesives

Use a dentist hook and/or the tweezers to remove old adhesives.
Clean the surface with isopropyl alcohol before attaching new adhesives.

2 Disassembly

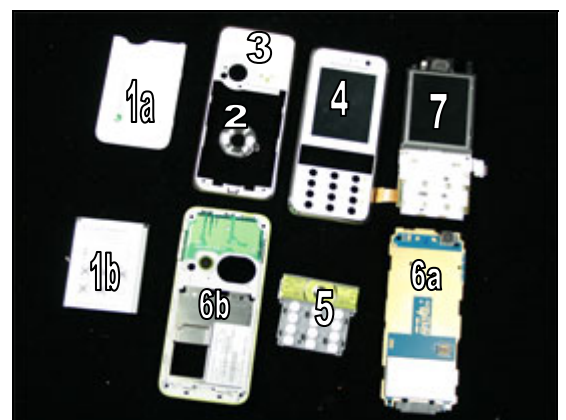
When you are going to replace a part being listed in *Replacements*, the instruction of that section usually begins by directing you to this *Disassembly* section with a specification of the instructions you have to carry out in order to disassemble the phone as far as needed before returning to *Replacements* for the actual replacement.



2.1 Overview

The disassembly is done in the following sequence:

1. Battery Cover (a) Battery (b)
2. Camera Ring Assembly
3. Antenna Cover Assy & Back Cover Assembly
4. Front Cover
5. Main Keypad
6. PCBA Assy (a) Main Frame Assembly (b)
7. LCD Frame Assy



2.1.1 Battery Cover & Battery

Press down with both thumbs on *Battery Cover* and push in the direction shown by the arrow.



Grip *Battery Cover* with fingers and lift off *Battery Cover*.



Grip *Battery* as shown in picture and lift up to release the battery.



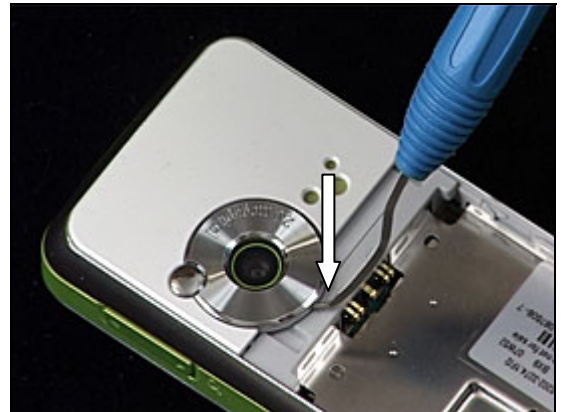
Grip *Battery* as shown in picture and lift out from phone.



2.1.2 Camera Ring Assembly

BE CAREFUL NOT TO SCRATCH THE ANTENNA COVER!

Insert dentist hook into the slot shown in picture and lift out.



2.1.3 Antenna Cover Assy & Back Cover Assembly

Use Philips Bit to remove the 3 Screws PT1.4x4mm.

Insert side Guitar pick as shown and unlatch snap hooks and run the Guitar pick along the side of *Back Cover Assembly* shown by the arrow.

Repeat this for other side of phone.

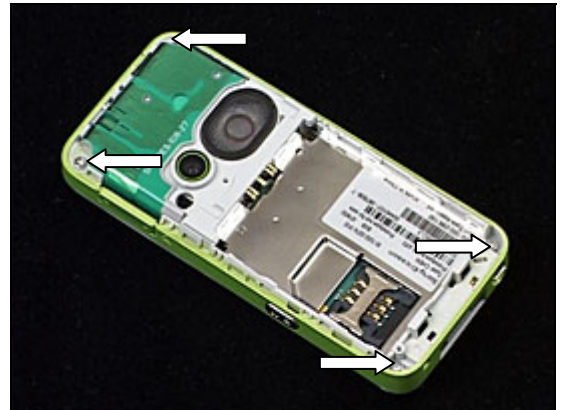
Grip *Antenna Cover Assy & Back Cover Assembly* with fingers and lift off from phone.



2.1.4 Front Cover

CHECK FIRST IF M2 MEMORY HAS BEEN REMOVED BEFORE CONTINUING!

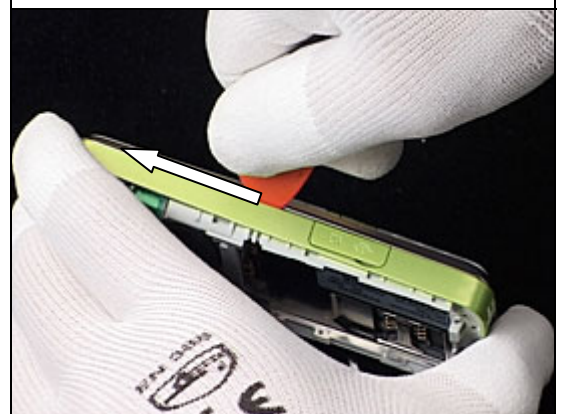
Use torx bit no. 6 to remove the 4 Screws *PT1.7 x 5mm*.



Insert guitar pick tool as shown in picture and unlatch snap hooks along the side of the phone as shown by the arrow.



Repeat this again for other side.



Grip *Front Cover* and lift away from phone.



2.1.5 Main Keypad

Use tweezers to remove Main *Keypad*.

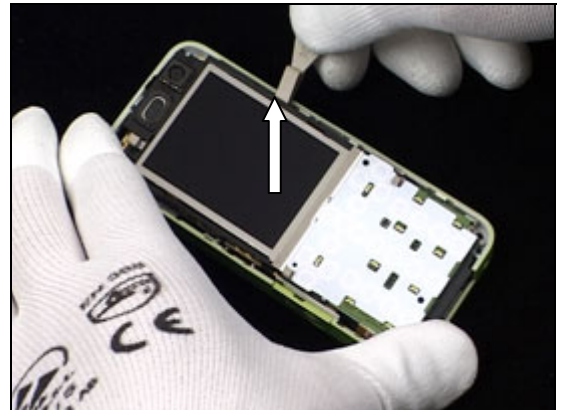




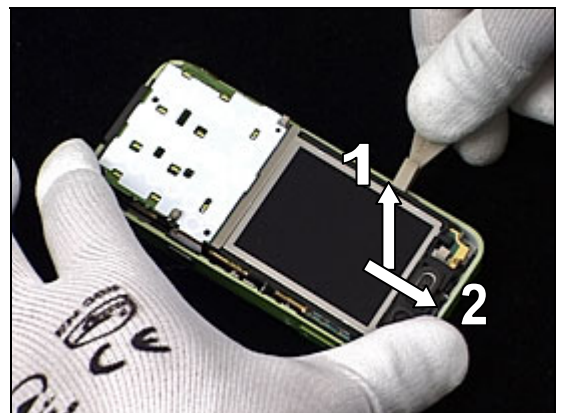
2.1.6 PCBA Assy & Main Frame Assembly

BE CAREFUL NOT TO TOUCH OR MARK THE LCD DISPLAY!

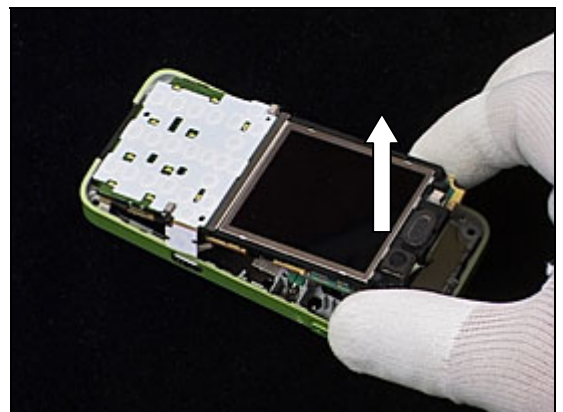
Insert side opening tool as shown in picture and unlatch snap hook.



Repeat this step for other side *PCBA Assy* (1) and top of phone (2).



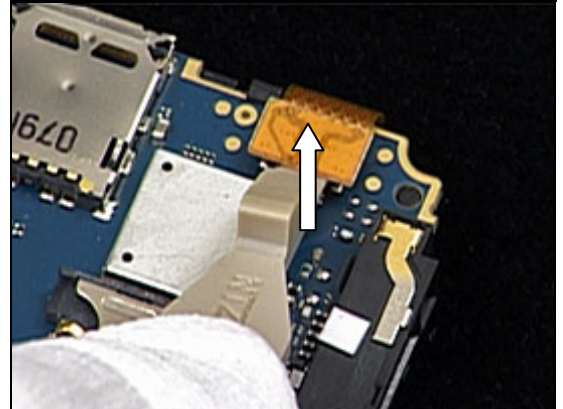
Grip at top of *PCBA Assy* and lift to remove it from *Main Frame Assembly* as shown in picture.



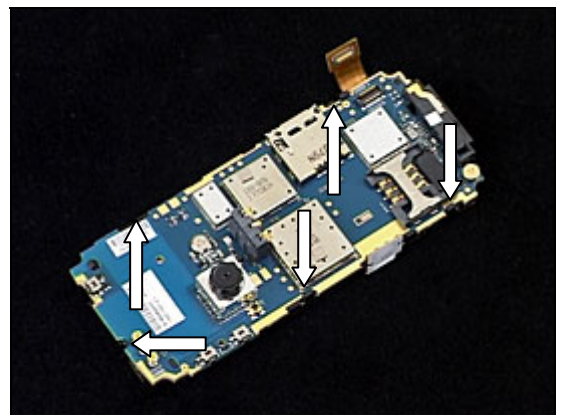


2.1.7 LCD Frame Assy

Release *Keyfoil Dome Assy connector* using side opening tool.

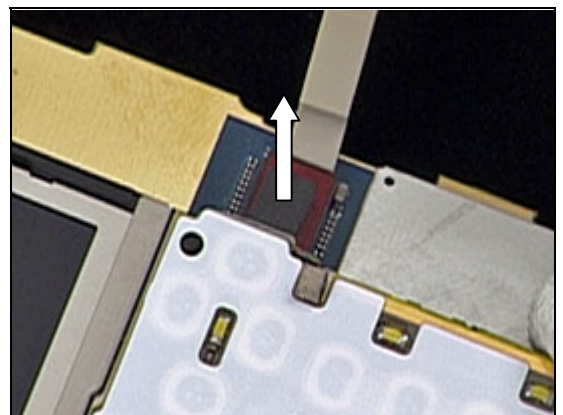


Use side opening tool to unlatch all 5 snap hooks as shown in picture by the arrows.

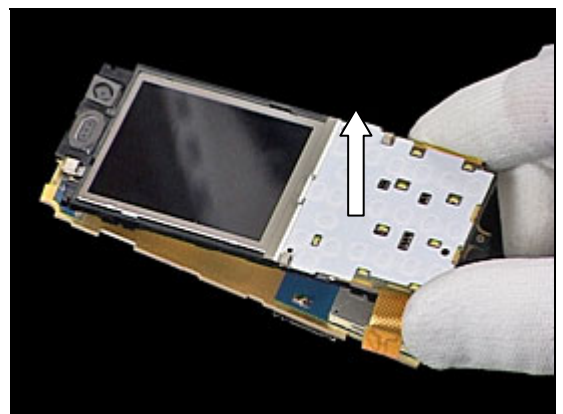


BE CAREFUL NOT TO DAMAGE LCD FLEX!

Release *LCD Connector* using side opening tool.



Grip *LCD Frame Assy* with fingers and lift from *PCBA*.



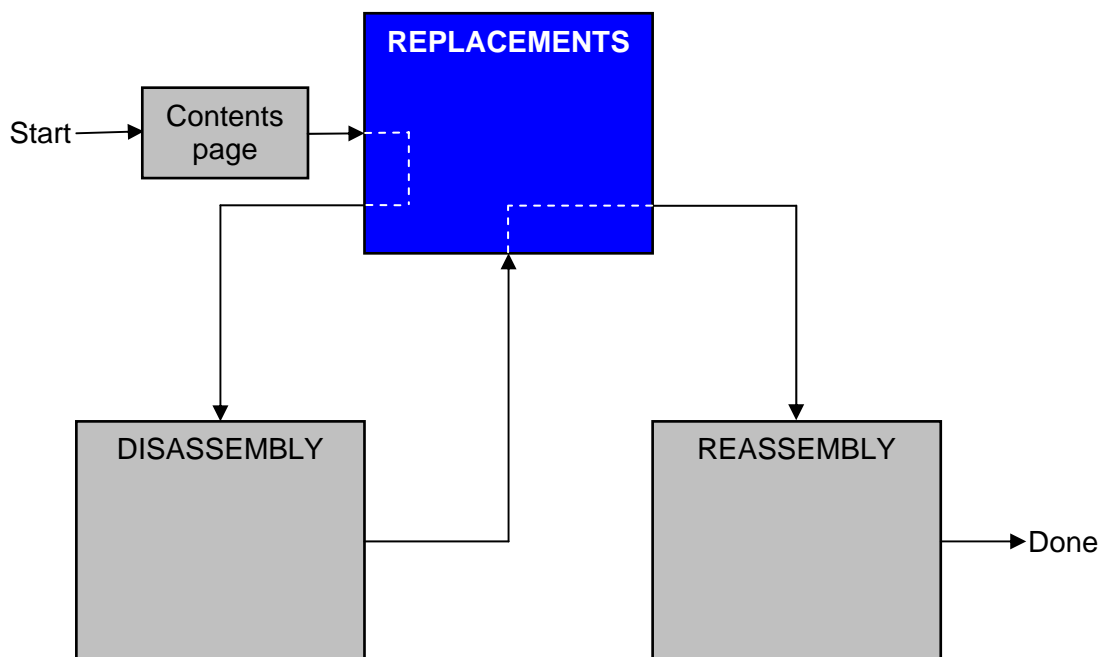
3 Replacements

Search for the part to be replaced on the Contents page and go to that instruction to be found in this *Replacements* section.

The instruction usually begins by directing you to the *Disassembly* section with a specification of the instructions you have to carry out in order to disassemble the phone as far as needed before the actual replacement.

Go back to this *Replacements* section and carry out the instruction.

The instruction usually ends by directing you to the *Reassembly* section with a specification of the instructions you have to carry out in order to reassemble the phone.



3.1 Battery Cover & Battery

Follow the 2.1.1 Disassembly instructions!

Follow the 4.1.7 Reassembly instructions!

3.2 Camera Ring Assembly

Follow the 2.1.1 – 2.1.2 Disassembly instructions!

Prepare new camera ring assembly.

Follow the 4.1.6 – 4.1.7 Reassembly instructions!

3.3 Antenna Cover Assy & Back Cover Assembly

Follow the 2.1.1 – 2.1.3 Disassembly instructions!

Prepare new antenna cover Assy.

Follow the 4.1.5 – 4.1.7 Reassembly instructions!

3.4 Front Cover

Follow the 2.1.1 – 2.1.4 Disassembly instructions!

Follow the 4.1.4 – 4.1.7 Reassembly instructions!

3.5 Main Keypad

Follow the 2.1.1 – 2.1.5 Disassembly instructions!

Follow the 4.1.3 – 4.1.7 Reassembly instructions!

3.6 PCBA Assy & Main Frame Assembly

Follow the 2.1.1 – 2.1.6 Disassembly instructions!

Follow the 4.1.2 – 4.1.7 Reassembly instructions!

3.7 LCD Frame Assy

Follow the 2.1.1 – 2.1.7 Disassembly instructions!

Follow the 4.1.1 – 4.1.7 Reassembly instructions!!

3.8 Camera Key

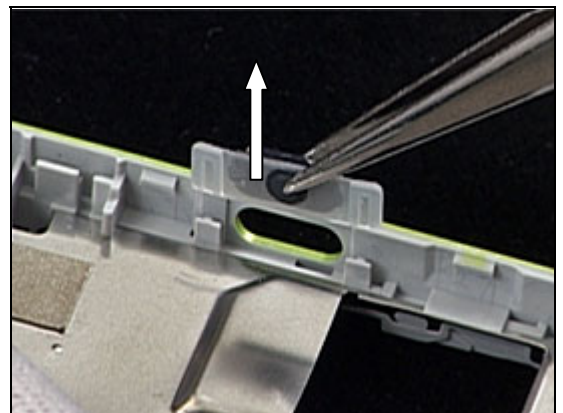
REMOVAL

Follow the 2.1.1 – 2.1.6 Disassembly instructions!

Overview picture.



Remove *Camera Key* with Tweezers.

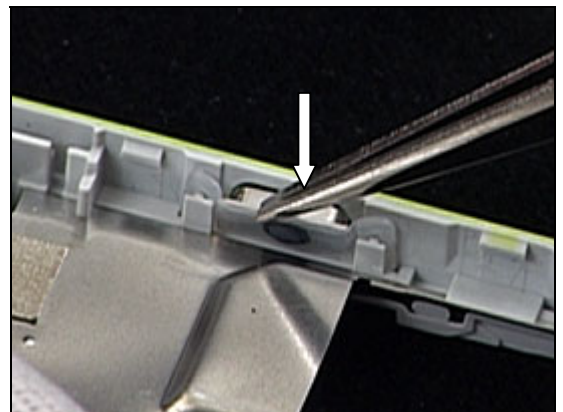


INSTALLATION

Position the *Camera Key* into the correct place using tweezers as shown in the picture.

Check placement using the tweezers to secure the *Camera Key*.

Follow the 4.1.2 – 4.1.7 Reassembly instructions!



3.9 Camera 2Mega Pixel & 2.0 Pixel Camera Shield

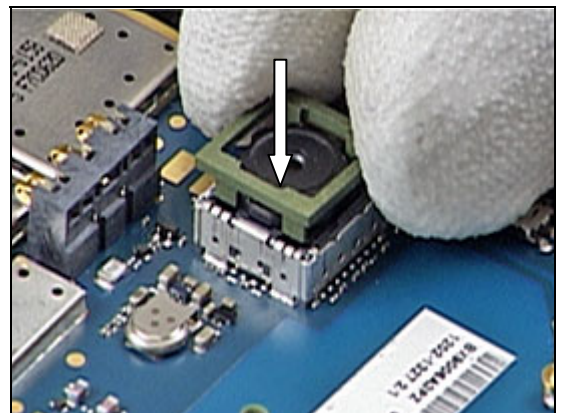
REMOVAL

Follow the 2.1.1 – 2.1.7 Disassembly instructions!

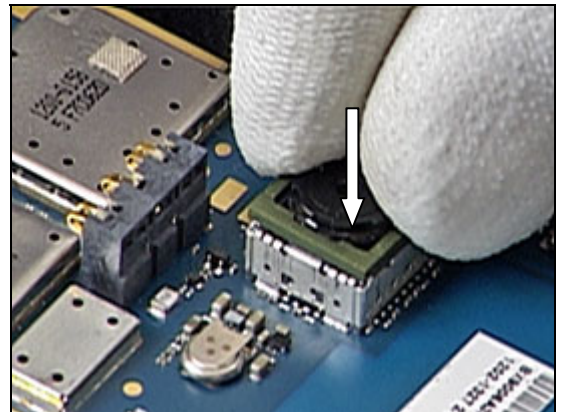
Remove 2.0 Pixel Camera Shield using side opening tool.



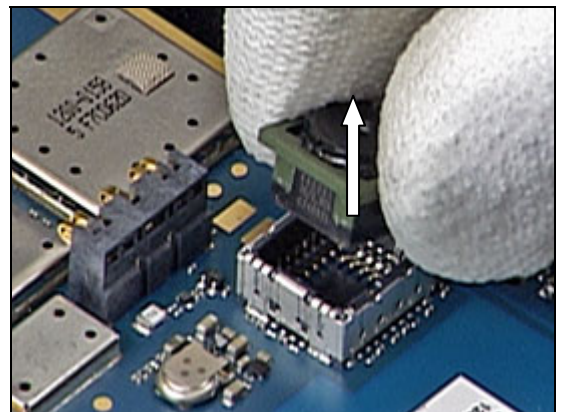
Position the camera tool into the camera socket, as shown in the picture.



Press down on the camera tool with two fingers, until camera tool completely enters the camera socket as shown in picture.



Remove the Camera 2Mega Pixel using fingers and lift out of the Camera Socket.

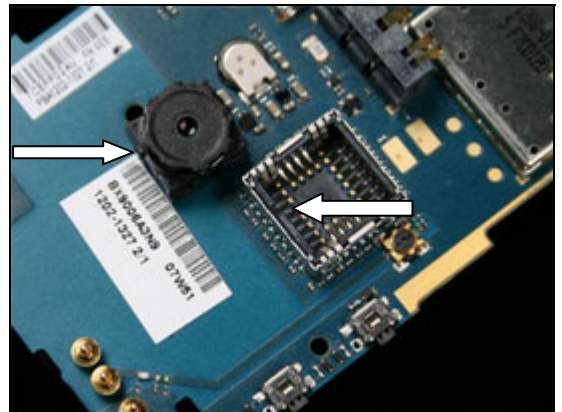




Camera 2Mega Pixel & 2.0 Pixel Camera Shield *continued*

INSTALLATION

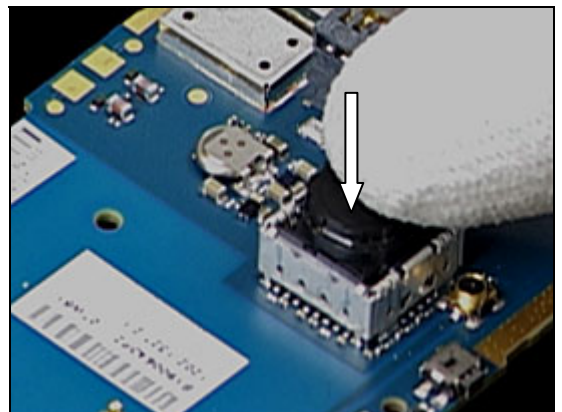
Overview picture showing alignment markings.



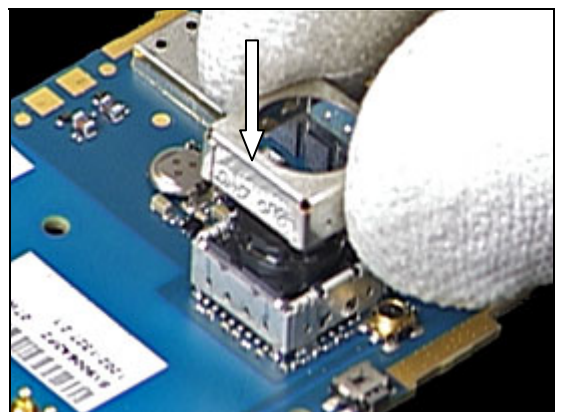
Position the *Camera 2Mega Pixel* into place as shown in the picture using fingers



Press down the *Camera 2Mega Pixel* into the camera socket using fingers.



Position the *2.0 Pixel Camera Shield* into the place as shown in the picture using fingers.

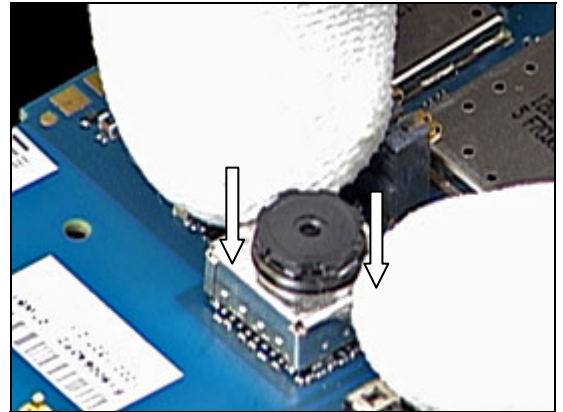


Camera 2Mega Pixel & 2.0 Pixel Camera Shield *continued*

Press down the *2.0 Pixel Camera Shield* and secure it using fingers.

Follow the 4.1.1 – 4.1.7 Reassembly instructions!

- **ATTENTION CLEAN CAMERA LENS IF ANY DUST IS PRESENT!**

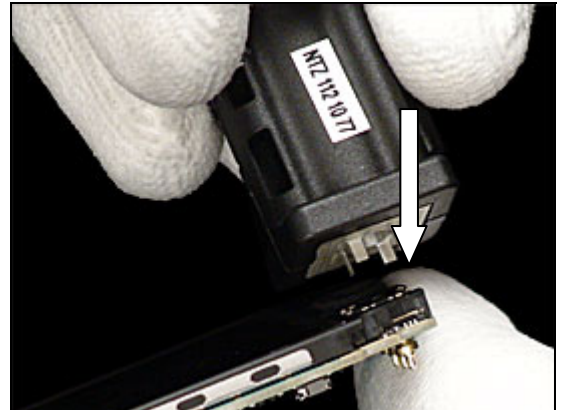


3.10 QCIF VGA Camera

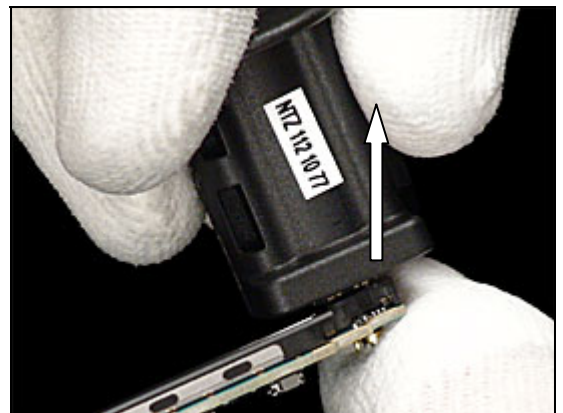
REMOVAL

Follow the 2.1.1 – 2.1.6 Disassembly instructions!

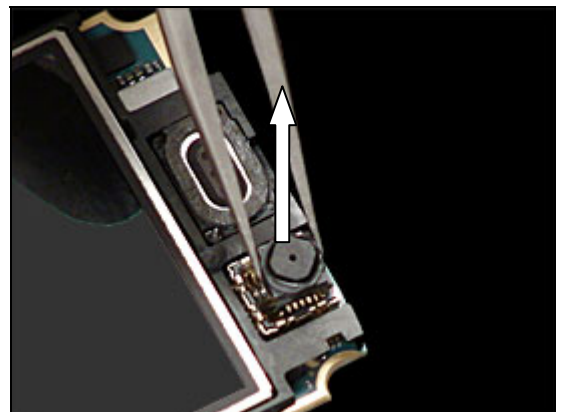
Insert VGA camera tool into QCIF VGA socket as shown in picture



Loosen the camera from socket by lifting tool upwards.

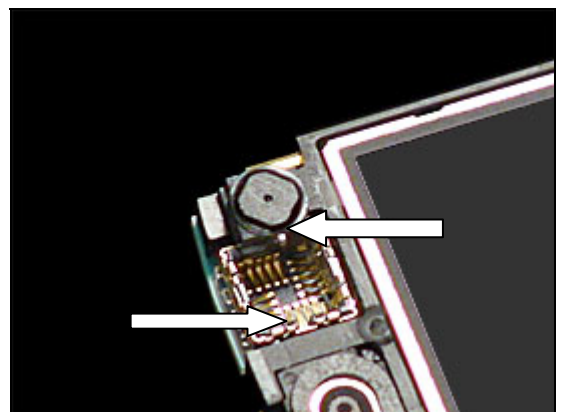


Remove QCIF VGA Camera by using tweezers.



INSTALLATION

Overview picture showing alignment markings.

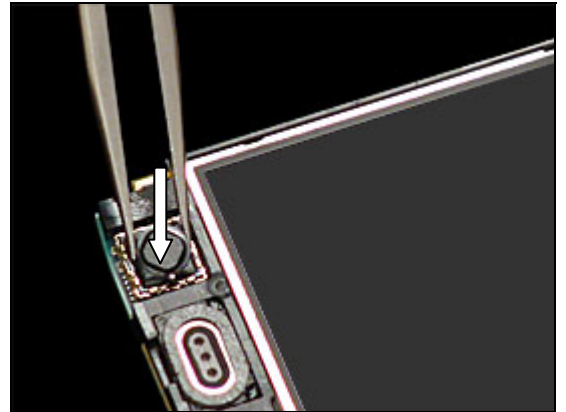




Qcif VGA Camera *continued*

Press down on each corner of *QCIF VGA Camera* and secure using tweezers.

Follow the 4.1.2 – 4.1.7 Reassembly instructions!

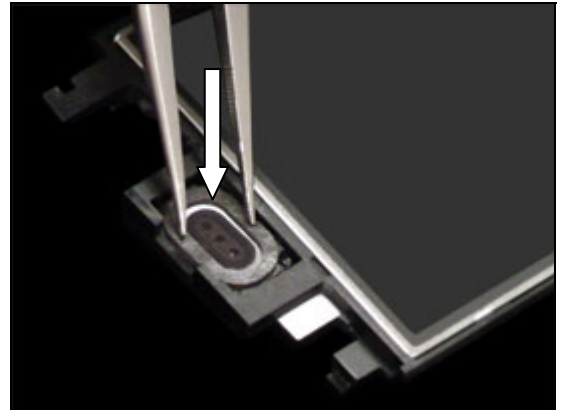


3.11 Receiver “Ear Speaker”

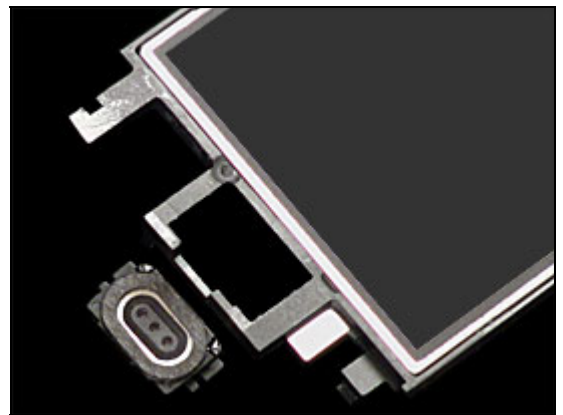
REMOVAL

Follow the 2.1.1 – 2.1.7 Disassembly instructions!

Use tweezers to push out receiver.

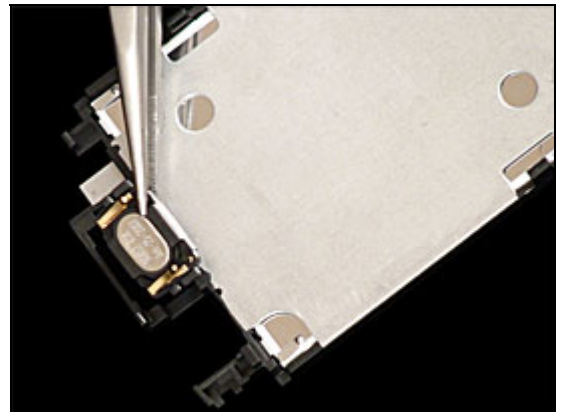


Overview picture.



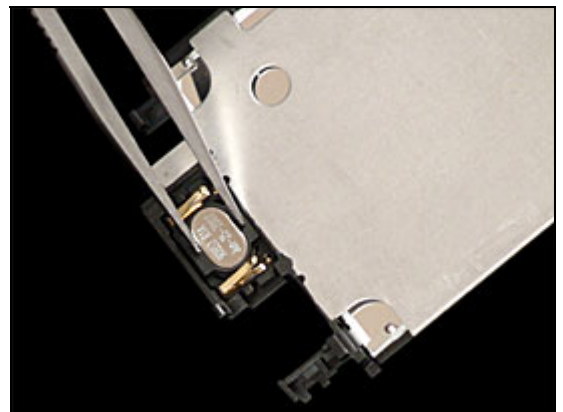
INSTALLATION

Use tweezers to position the *Receiver*.



Use Tweezers to secure receiver.

Follow the 4.1.1 – 4.1.7 Reassembly instructions!

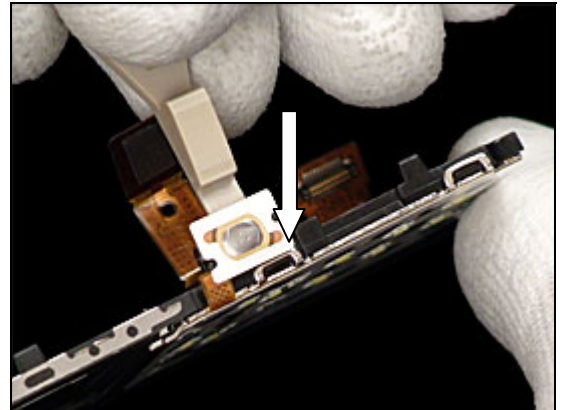


3.12 Keyfoil Dome Assy & LCD

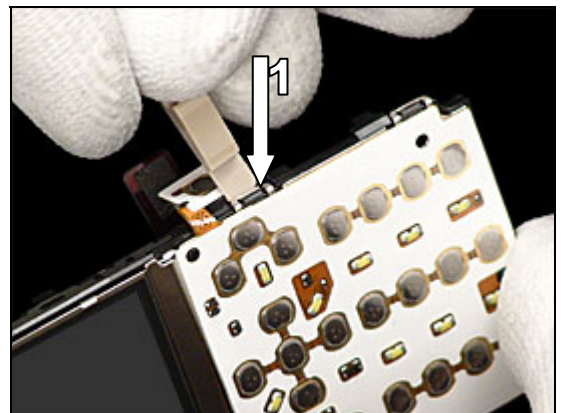
REMOVAL

Follow the 2.1.1 – 2.1.7 Disassembly instructions!

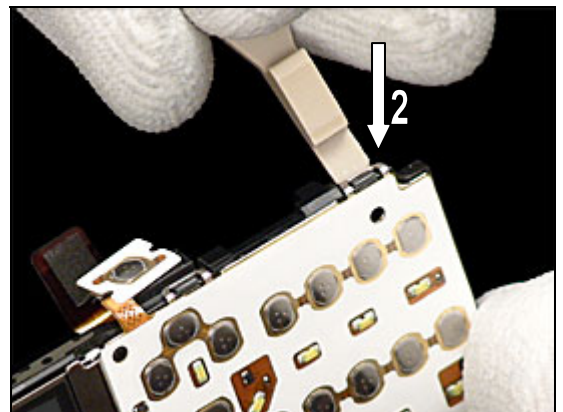
Insert side opening tool at the snap hook as shown in picture.



Loosen 1st snap hooks using side opening tool.



Repeat this step for 2nd snap hook



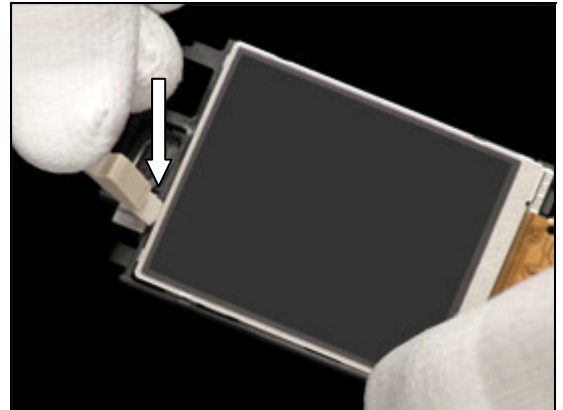
Lift off the *Key foil Dome Assy* as shown in picture.



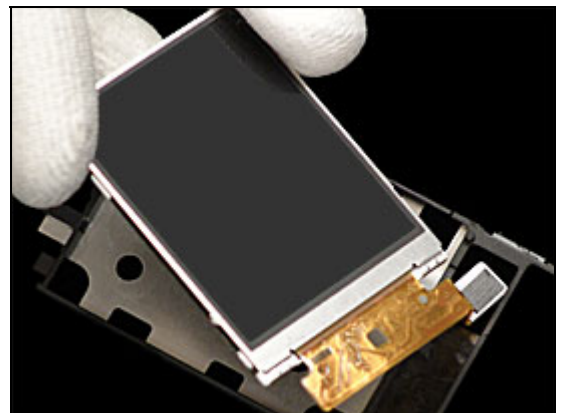
Keyfoil Dome Assy & LCD *continued*

BE CAREFUL NOT TO TOUCH OR MARK THE LCD!

Insert side opening tool and loosen the top of LCD

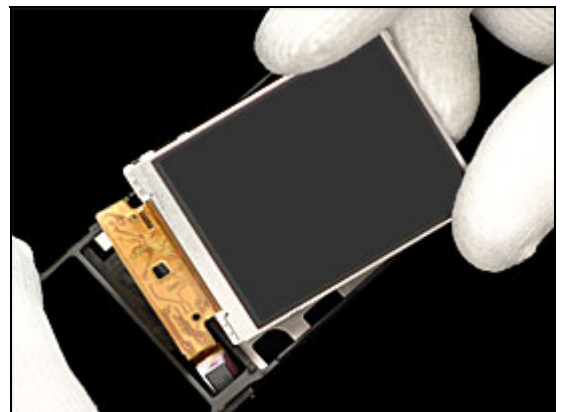


grip at top of LCD and lift out of LCD Frame

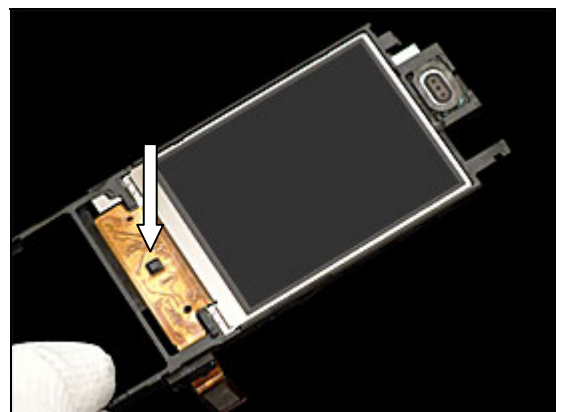


INSTALLATION

Position into place the LCD and press down carefully.

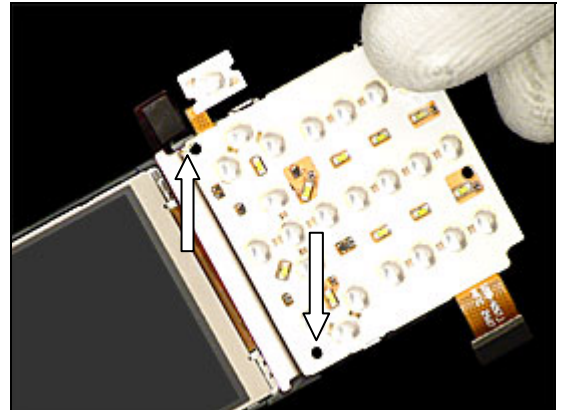


Check placement of LCD and flex location pin is positioned correctly.

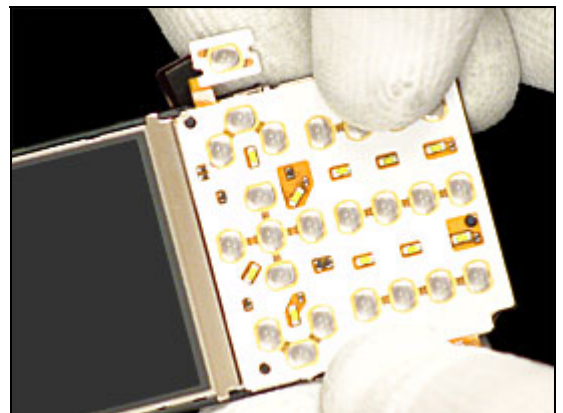


Keyfoil Dome Assy & LCD *continued*

Position *Keyfoil Dome Assy* into place and check alignment pins.

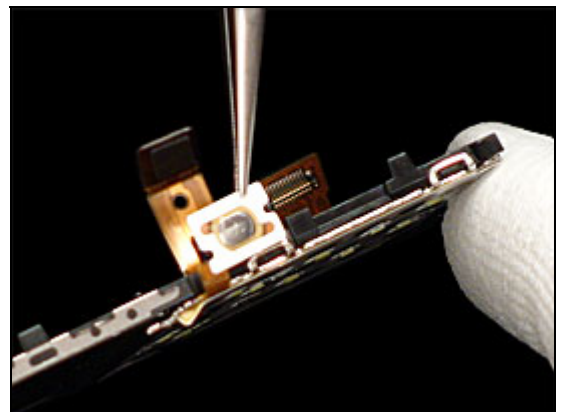


Press down and secure the *Key Foil Assy*.



Use Tweezers to secure the positioning of camera button.

Follow the 4.1.1–4.1.7 reassembly instructions!

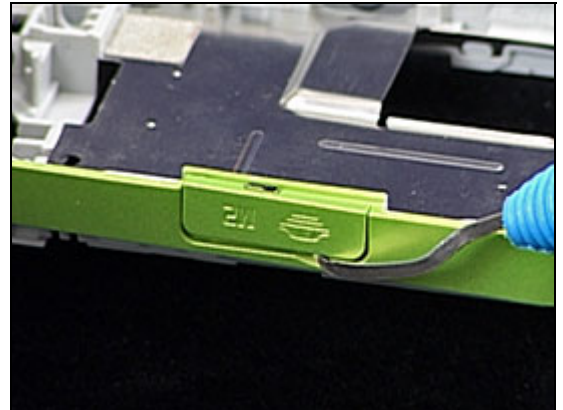


3.13 M2 Cover

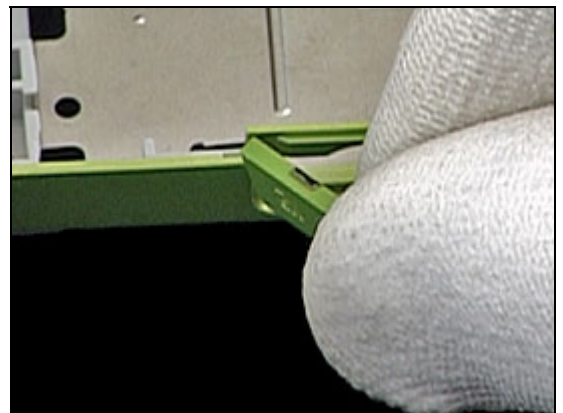
REMOVAL

Follow the 2.1.1 – 2.1.6 Disassembly instructions!

Overview picture.



Pull out *M2 Cover* using fingers.



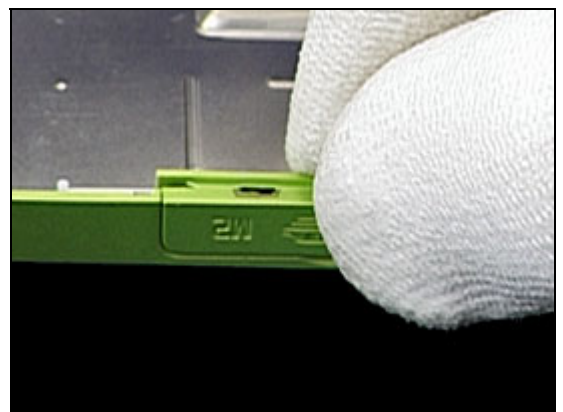
INSTALLATION

Position into place with fingers, and then press *M2 Cover* into *Main Frame Assembly*.



Secure the *M2 Cover* into *Main Frame Assembly*.

Follow the 4.1.2–4.1.7 reassembly instructions!

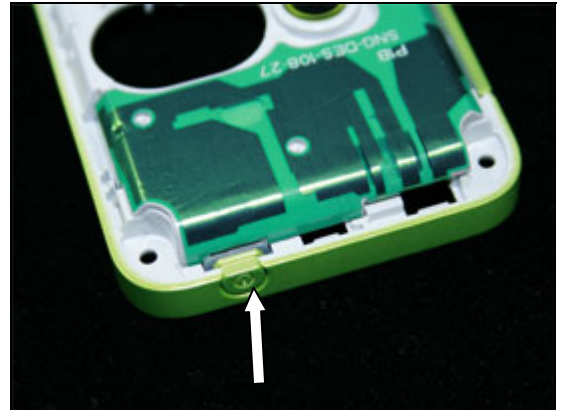


3.14 On/Off Key

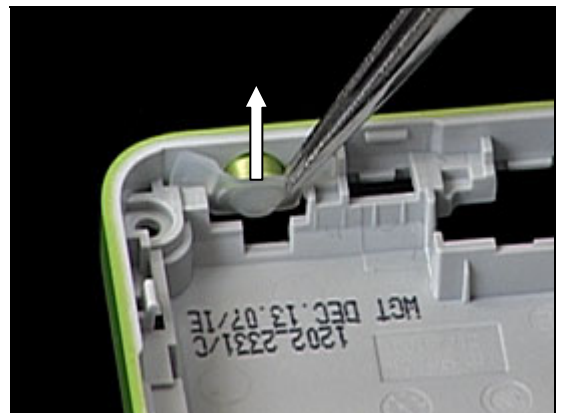
REMOVAL

Follow the 2.1.1 – 2.1.6 Disassembly instructions!

Overview picture.



Remove *On/Off Key* using tweezers.



INSTALLATION

Position into place with tweezers, then Check placement.

Follow the 4.1.2–4.1.7 reassembly instructions!

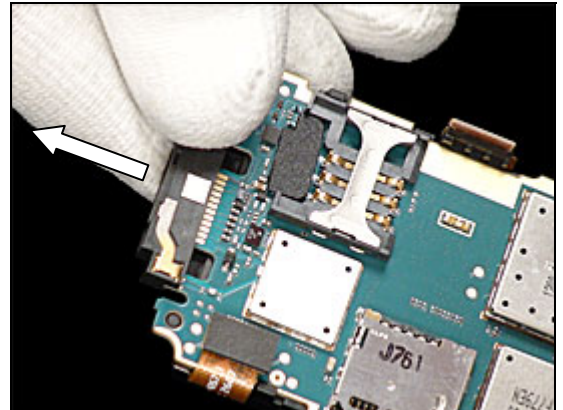


3.15 System Connector with Bluetooth Antenna

REMOVAL

Follow the 2.1.1 – 2.1.6 Disassembly instructions!

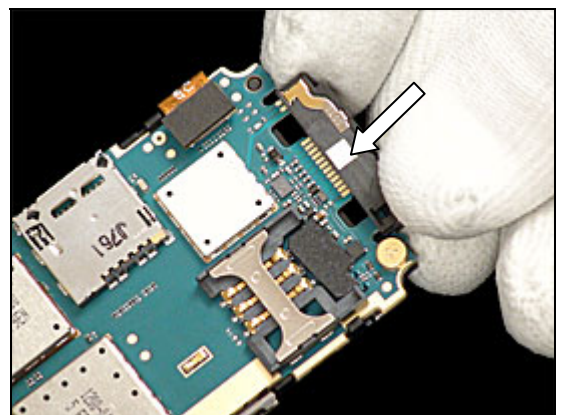
Grip with fingers the *System Connector* and pull away from *PCBA*.



INSTALLATION

Push *System Connector* into place and secure to *PCBA*.

Follow the 4.1.2– 4.1.7 Reassembly instructions!



3.16 Vibrator

REMOVAL

Follow the 2.1.1 – 2.1.6 Disassembly instructions!

Loosen *Vibrator* with Dentist hook.

AVOID TOUCHING METAL CONTACTS!

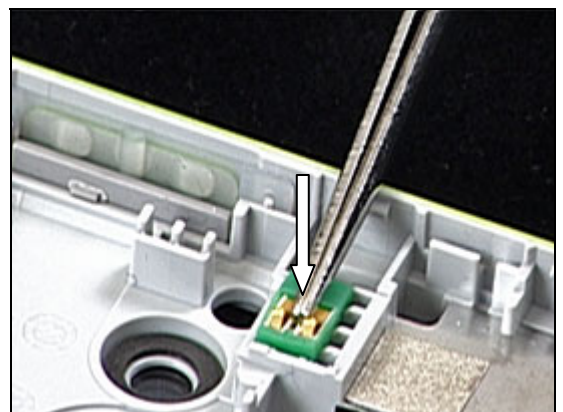
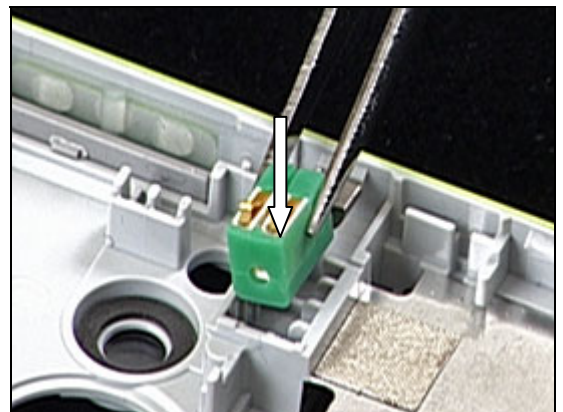
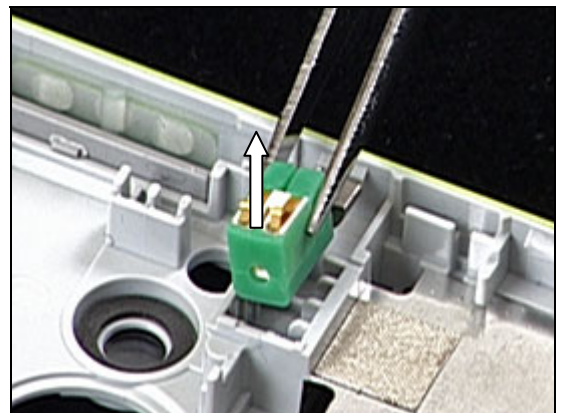
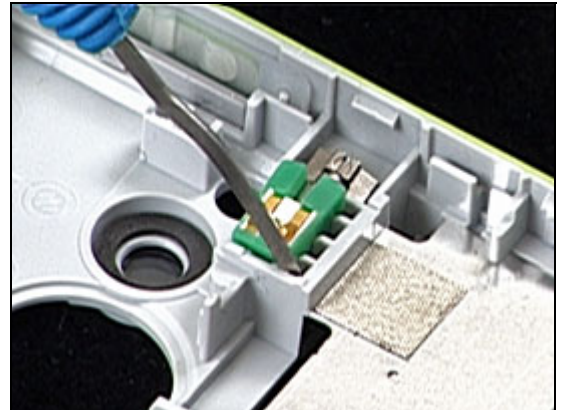
Remove with tweezers gripping the side avoiding the metal contacts pins.

INSTALLATION

Position the *vibrator* in the cavity,

Use side tweezers to position into place.

Follow the 4.1.2– 4.1.7 Reassembly instructions!

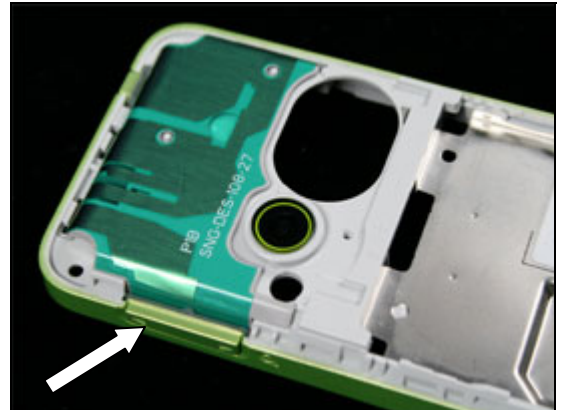


3.17 Volume Key

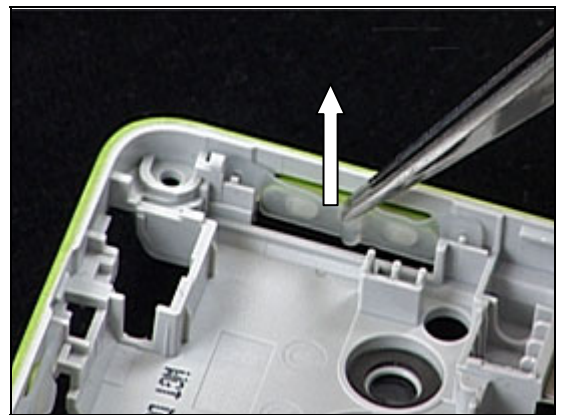
REMOVAL

Follow the 2.1.1 – 2.1.6 Disassembly instructions!

Overview picture.



Remove it using tweezers.



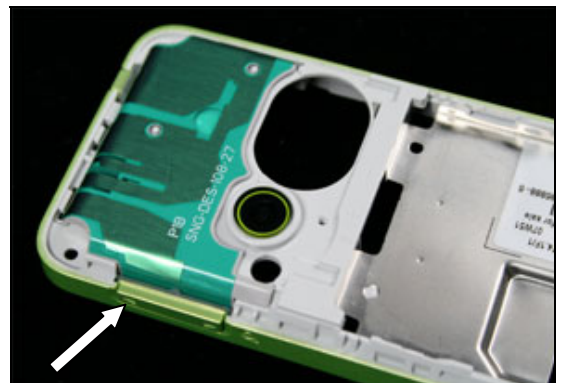
INSTALLATION

Position into place with tweezers.



Check placement.

Follow the 4.1.2 – 4.1.7 Reassembly instructions!

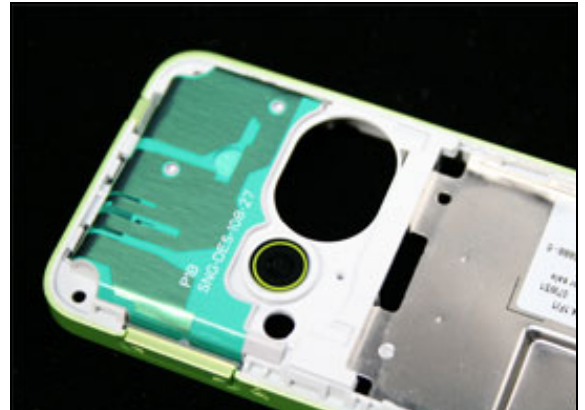


3.18 Camera lens Assembly

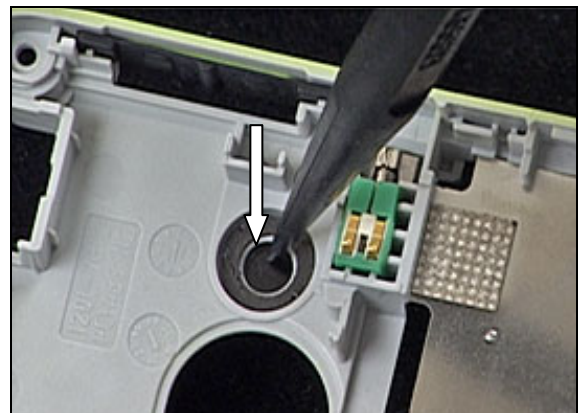
REMOVAL

Follow the 2.1.1 – 2.1.6 Disassembly instructions!

Overview picture.

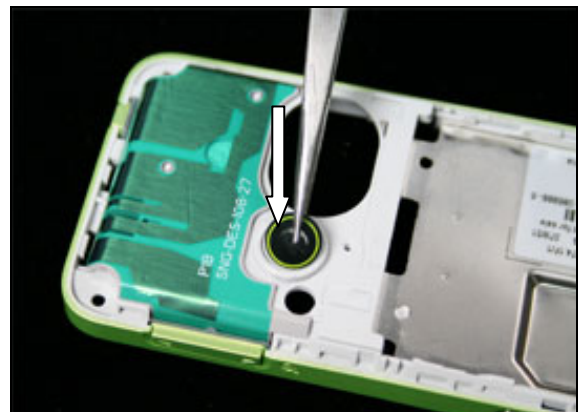


Push the *Camera lens Assembly* using the Nylon Pointer shown in the picture.



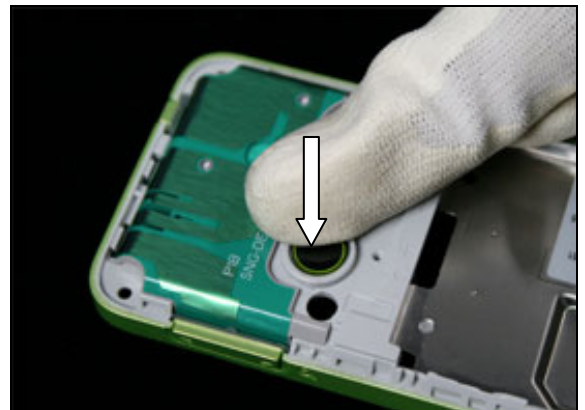
INSTALLATION

Position the *Camera lens Assembly* into the correct position using tweezers shown in the picture.



Secure the *Camera lens Assembly* using finger, and check the positioning and alignment.

Follow the 4.1.2 – 4.1.7 Reassembly instructions!

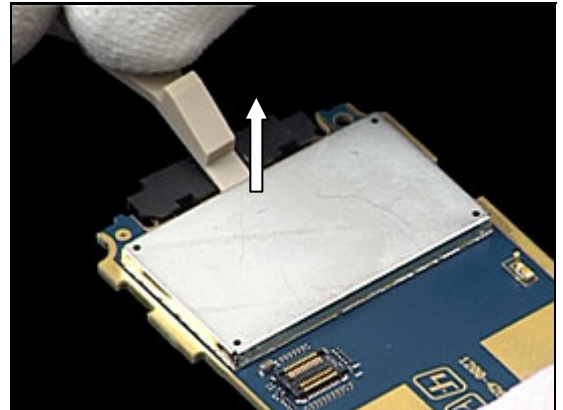


3.19 BB Shielding Cover

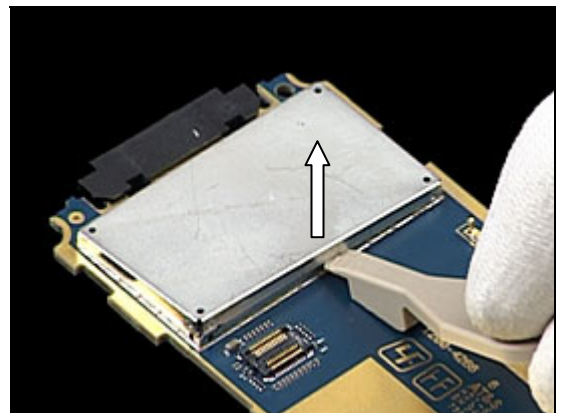
REMOVAL

Follow the 2.1.1 – 2.1.7 Disassembly instructions!

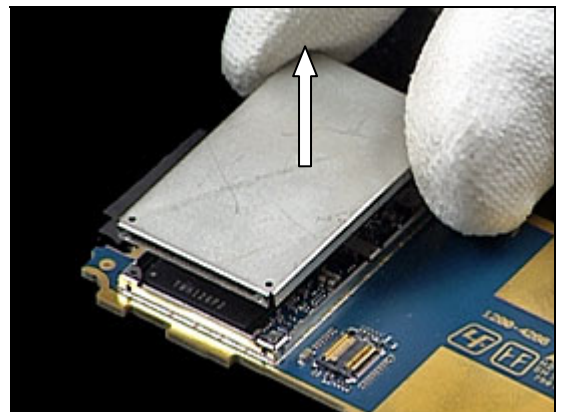
Loosen the *BB Shielding Cover* on one side using the Front Opening tool shown in the picture.



Loosen the *BB Shielding Cover* on the other side using the Front Opening tool shown in the picture.



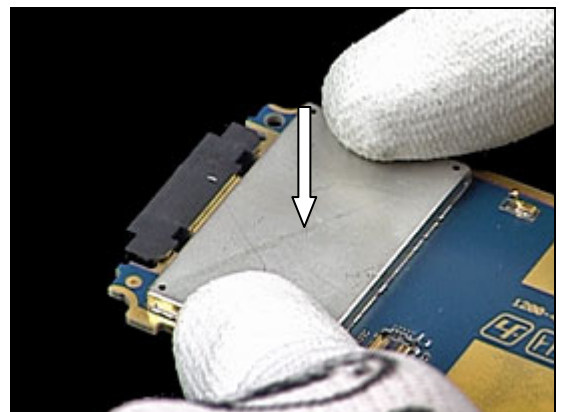
Remove the *BB Shielding Cover* using fingers as shown in the picture.



INSTALLATION

Secure the *BB Shielding Cover* using finger

Follow the 4.1.1 – 4.1.7 Disassembly instructions!

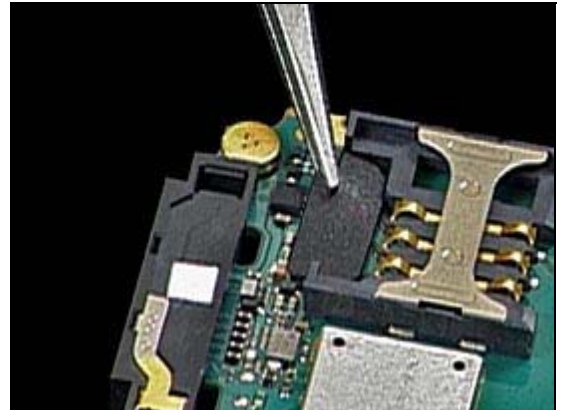


3.20 Gasket Tape Near Sim Reader

REMOVAL

Follow the 2.1.1 – 2.1.6 Disassembly instructions!

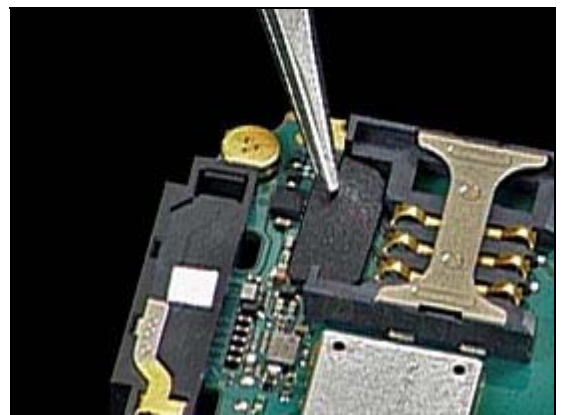
Remove the *Gasket Tape Near Sim Reader* using tweezers.



INSTALLATION

Position the *Gasket Tape Near Sim Reader* as shown in the picture and secure it using tweezers.

Follow the 4.1.2 – 4.1.7 Disassembly instructions!



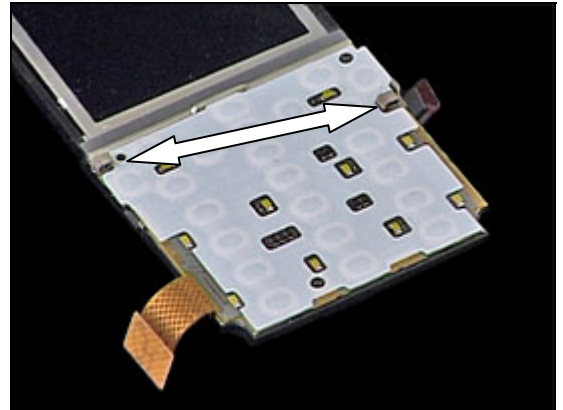
3.21 Function Key Conductive Gasket

INSTALLATION

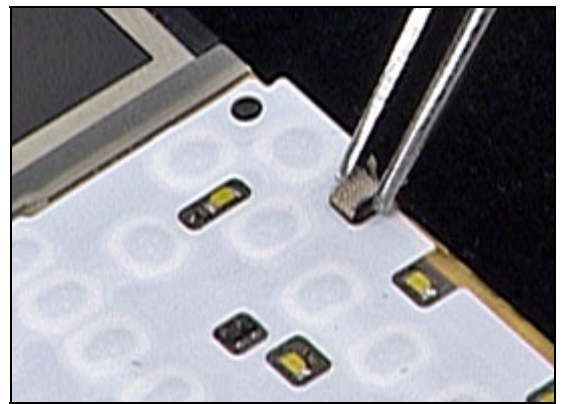
Follow the 2.1.1 – 2.1.6 Disassembly instructions!

Overview picture.

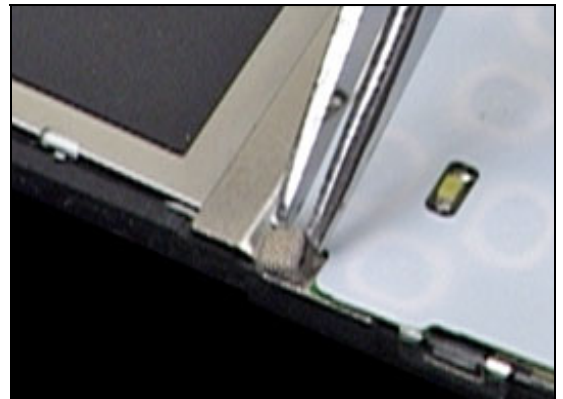
CHECK IF MISSING, THEN PROCEED!



Add the *Function Key Conductive Gasket* into position as shown in the picture using the tweezers.



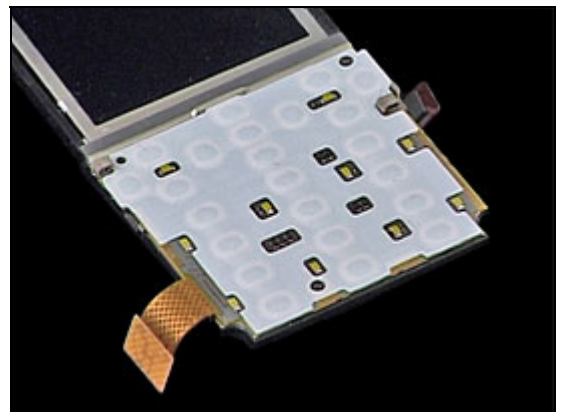
Add the *Function Key Conductive Gasket* into position as shown in the picture using the tweezers.



INSPECTION

Secure them using tweezers.

Follow the 4.1.1 – 4.1.7 Disassembly instructions!



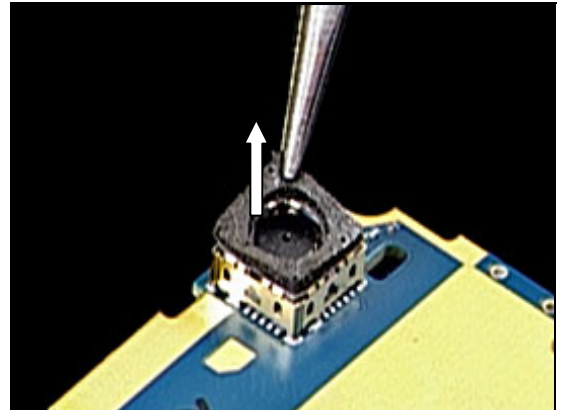


3.22 VGA Camera Gasket

REMOVAL

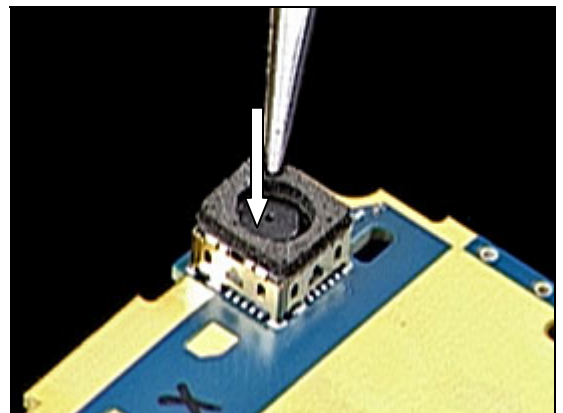
Follow the 2.1.1 – 2.1.7 Disassembly instructions!

Remove the *VGA Camera Gasket* using the tweezers shown in the picture.



INSTALLATION

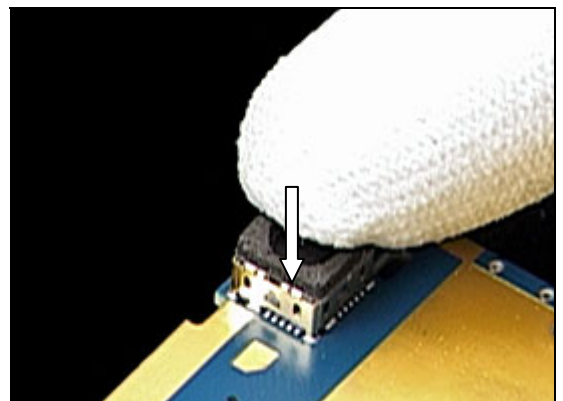
Position the *VGA Camera Gasket* on the Qcif VGA Camera using the tweezers shown in the picture.



INSPECTION

Press down and Secure using finger.

Follow the 4.1.1 – 4.1.7 Reassembly instructions!

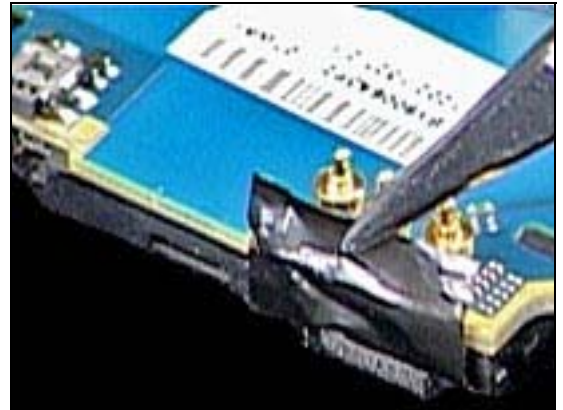


3.23 Cushion 0, mmnon_conductive Instructions

REMOVAL

Follow the 2.1.1 – 2.1.6 Disassembly instructions!

Remove the Cushion 0, mmnon_conductive tape using tweezers as shown in the picture.



INSTALLATION

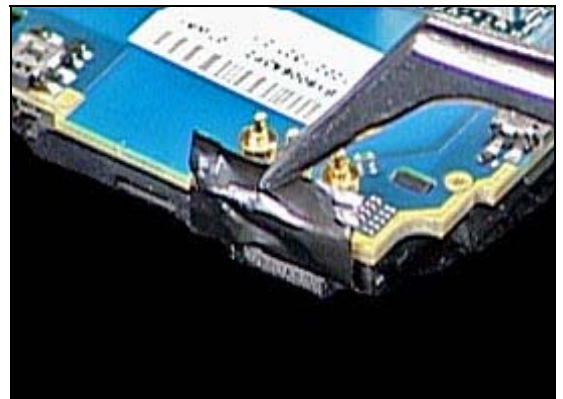
Position the Cushion 0, mmnon_conductive tape on the side of the Qcif VGA Camera and Top of PCBA Assy using the tweezers shown in the picture.



INSPECTION

Secure using tweezers and fingers.

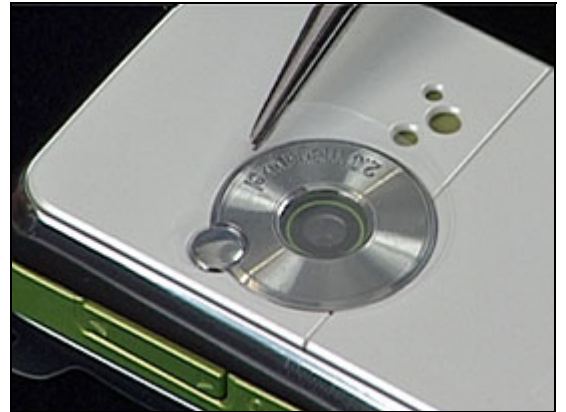
Follow the 4.1.2 – 4.1.7 Reassembly instructions!



3.24 Camera Protective Tape

INSTALLATION

Position the *Camera Protective Tape* on the top of the Camera Ring Assembly using the tweezers shown in the picture.

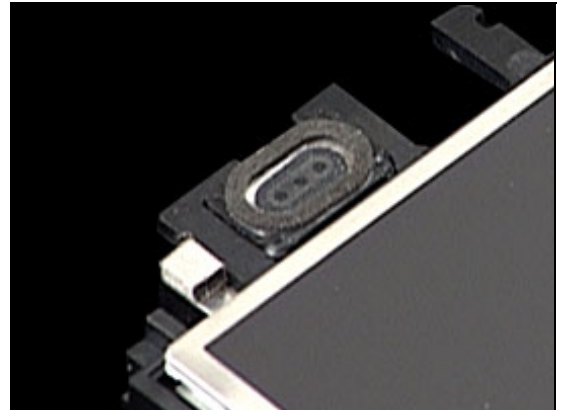


3.25 Receiver Conductive Gasket

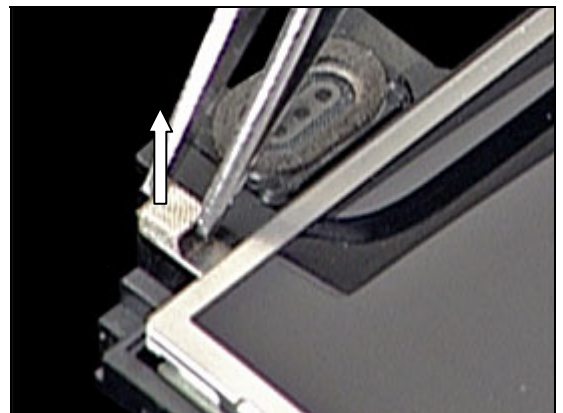
REMOVAL

Follow the 2.1.1 – 2.1.6 Disassembly instructions!

Overview picture.

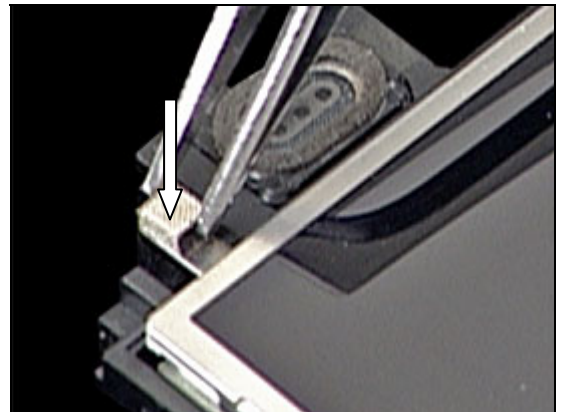


Remove the *receiver conductive gasket* using tweezers.



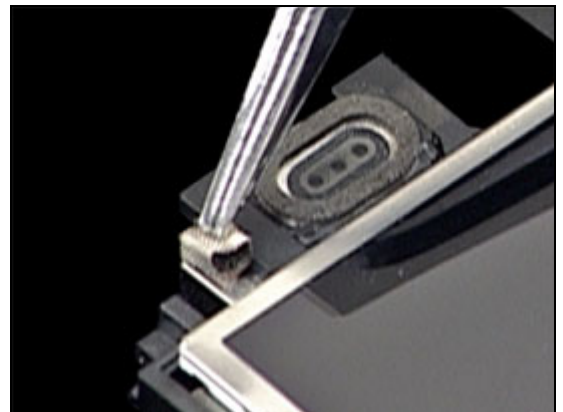
INSTALLATION

Position the *receiver conductive gasket* into correct position using tweezers.



Secure the *receiver conductive gasket* using tweezers.

Follow the 4.1.2 – 4.1.7 Disassembly instructions!



3.26 Antenna Assy

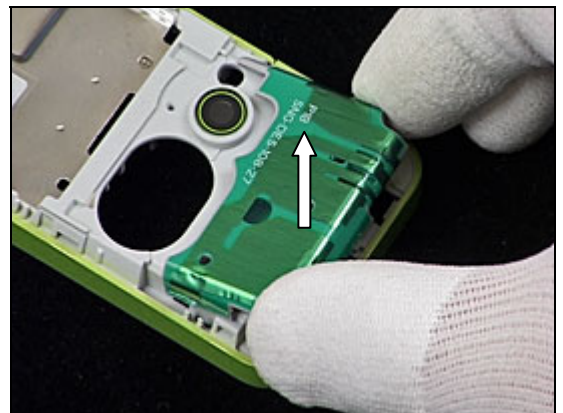
REMOVAL

Follow the 2.1.1 – 2.1.4 Disassembly instructions!

Use Nylon Pointer as shown in picture to unlatch snap hook on the top of *Antenna Assy*.

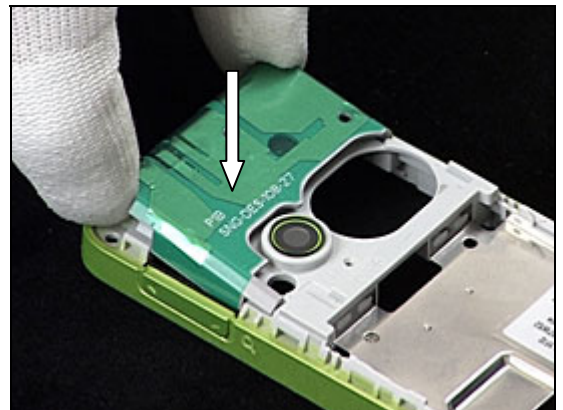


Grip *Antenna Assy* and lift away from *Main Frame Assembly*.



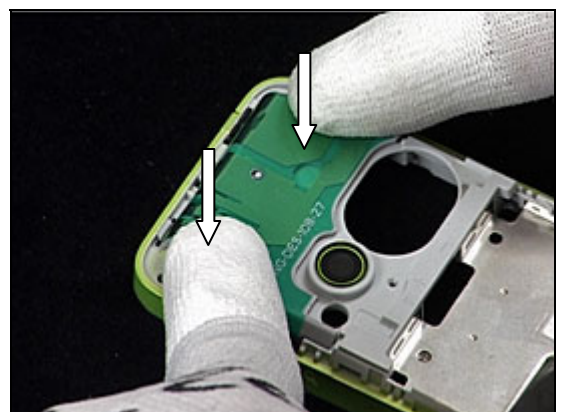
INSTALLATION

Position *Antenna Assy* into correct position using fingers.



Position *Antenna Assy* into correct position using fingers.

Follow the 4.1.4 – 4.1.7 Reassembly instructions!

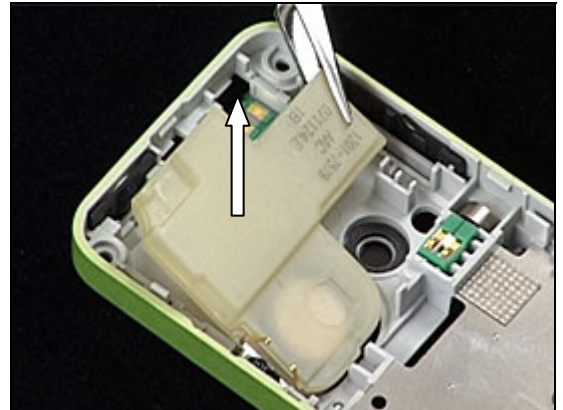


3.27 Speaker Box Assembly

REMOVAL

Follow the 2.1.1 – 2.1.6 Disassembly instructions!

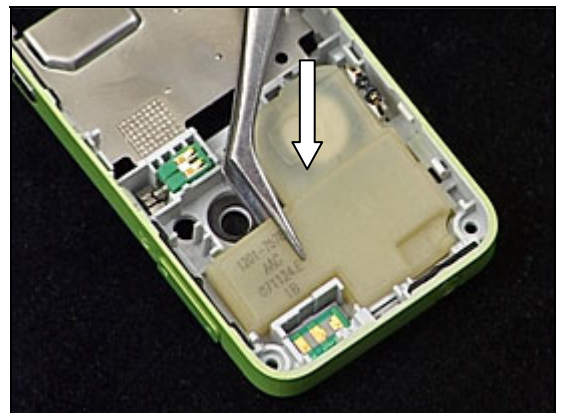
Insert Tweezers as shown in picture and remove the *speaker box assembly*.



INSTALLATION

Position the *Speaker Box Assembly* into place as shown in picture using Tweezers.

Follow the 4.1.2 – 4.1.7 Reassembly instructions!



3.28 Liquid Intrusion Indicator

INSPECTION

There is one Liquid Intrusion Indicator located on the PCBA.

To get access to and to inspect the indicators:
Follow 2.1.1 – 2.1.6 Disassembly instructions!

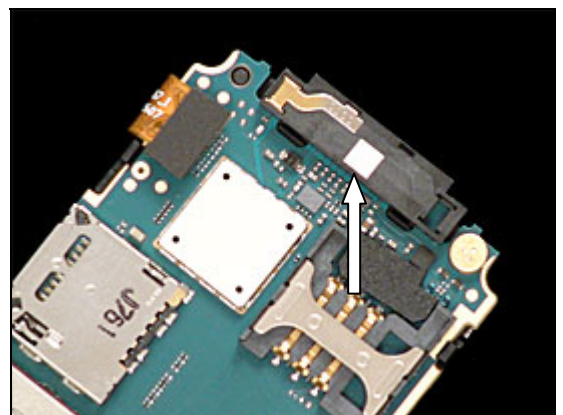
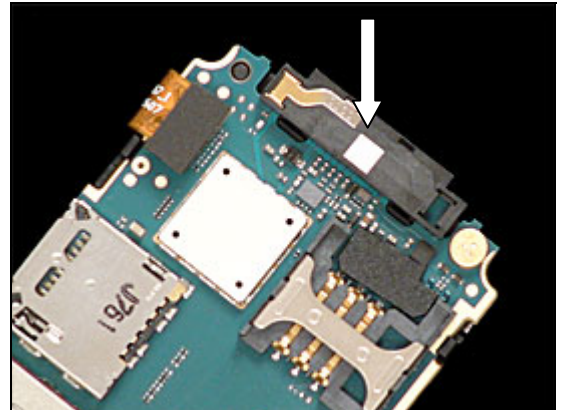
REMOVAL

Remove the activated *liquid intrusion indicator* with the dentist hook and the tweezers.

INSTALLATION

Attach the new *liquid intrusion indicator* with the tweezers and the dentist hook.

Follow the 4.1.2 – 4.1.7 Reassembly instructions!



3.29 KRH Label

Follow the 2.1.1 Disassembly instructions!

Read the old label and/or write the information into the "Label make" program before removal

Note the position of the label before removal

Heat up the label by using hot air, if needed.

Carefully remove the label without causing scratches

If there still are residues, clean the surface with isopropyl alcohol

Check that the proper label format is loaded in the Zebra printer.

Write a new label by using the program "Label make" and check that the printing is OK.

Take the new label and place it onto the frame as in the adjacent picture.

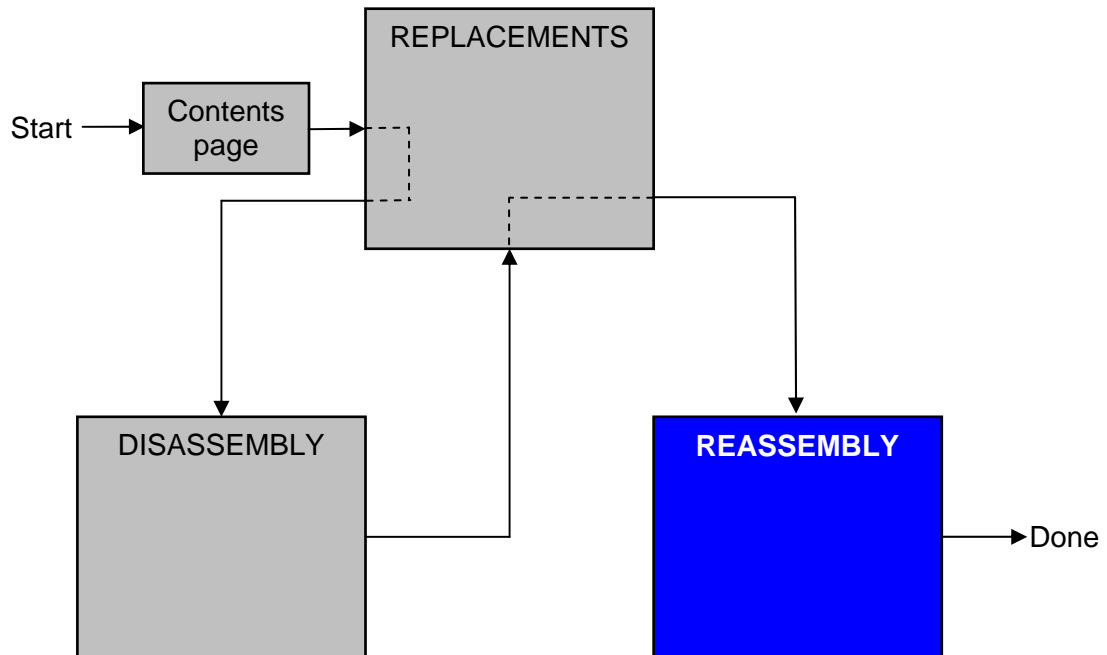
ONE LABEL ONLY IS ALLOWED!

Follow the 4.1.7 Reassembly instructions!



4 Reassembly

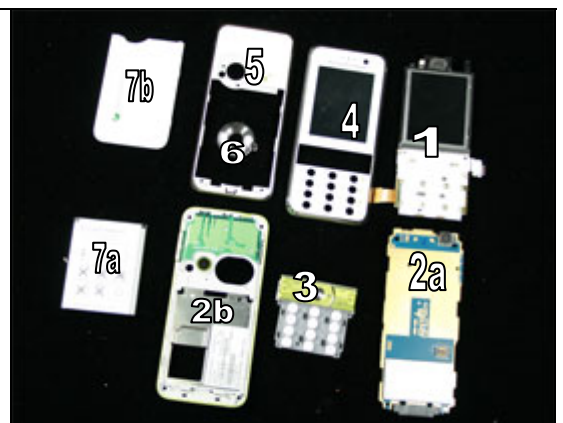
After replacing a part being listed in Replacements, the instruction of that section usually ends by directing you to this Reassembly section with a specification of the instructions you have to carry out in order to reassemble the phone.



4.1 Overview

The disassembly is done in the following sequence:

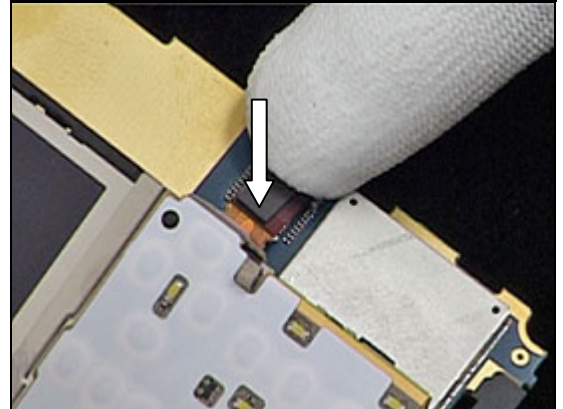
1. LCD Frame Assy
2. PCBA Assy (a) Main Frame Assembly (b)
3. Main Keypad
4. Front Cover
5. Antenna Cover Assy & Back Cover Assembly
6. Camera Ring Assembly
7. Battery (a) Battery Cover (b)



4.1.1 LCD Frame Assy

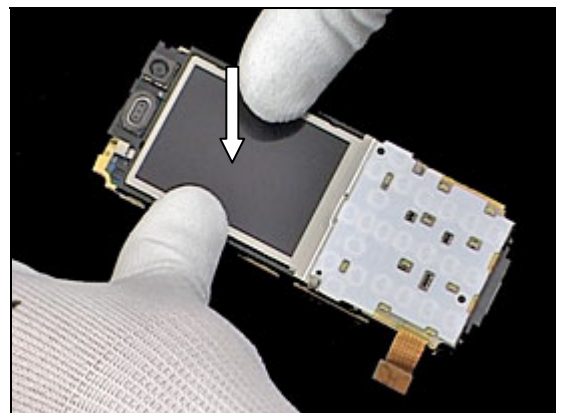
BE CAREFUL NOT TO TWIST OR DAMAGE LCD FLEX!

Position the *LCD Frame Assy* then secure LCD connector using fingers.

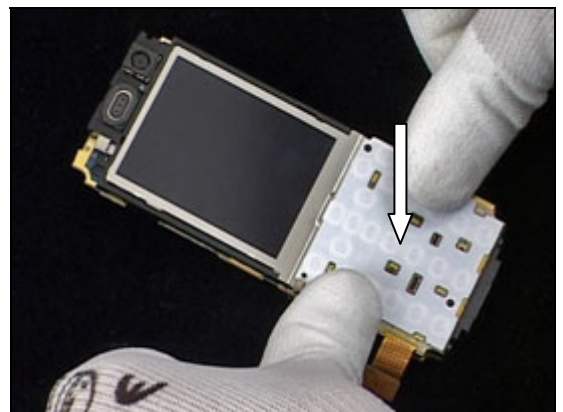


BE CAREFUL NOT TO TOUCH OR MARK THE LCD!

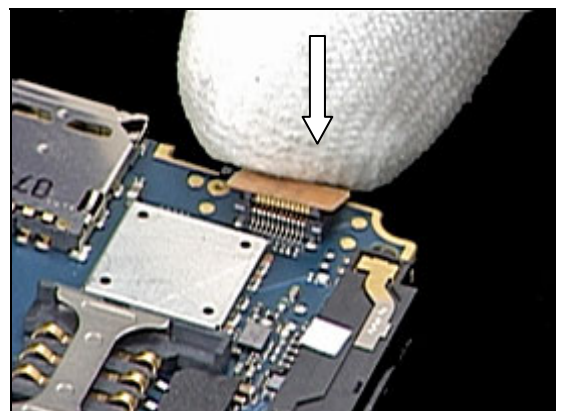
Press down and secure snap hooks at top end of *PCBA*.



Press down and secure snap hooks at bottom end of *PCBA*.



Secure Keyfoil Dome Assy connector using finger.



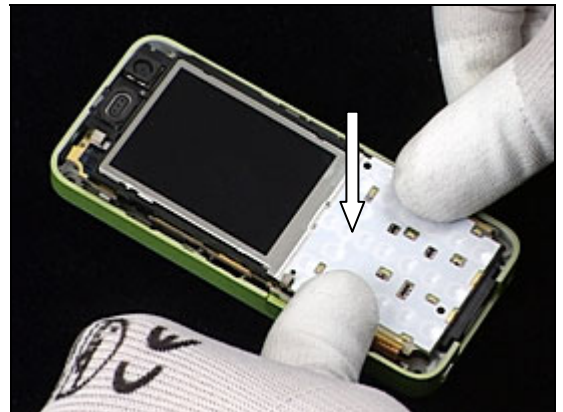


4.1.2 PCBA Assy & Main Frame Assembly

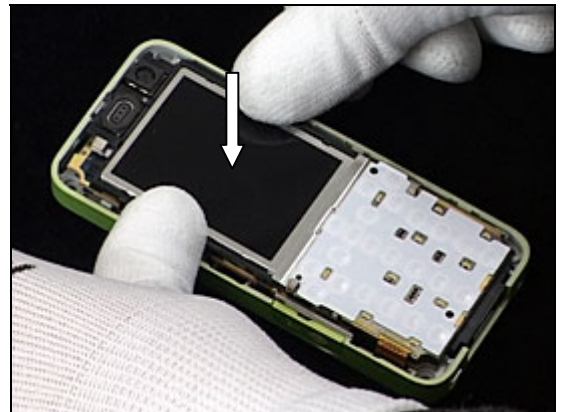
Position *PCBA Assy* into the *Main Frame Assembly*.



Press down *PCBA Assy* to secure into the *Main Frame Assembly* at bottom end first.



Press down on *PCBA Assy* to secure into the *Main Frame Assembly* at the top end of phone second.



4.1.3 Main Keypad

Use Tweezers and position *Main Keypad* into Front Cover Assembly, as shown in picture.



Check alignment of *Main Keypad*.



4.1.4 Front Cover

CLEAN ANY DUST OR MARKS FROM FRONT COVER WINDOW & LCD BEFORE PROCEEDING WITH NEXT STEP!

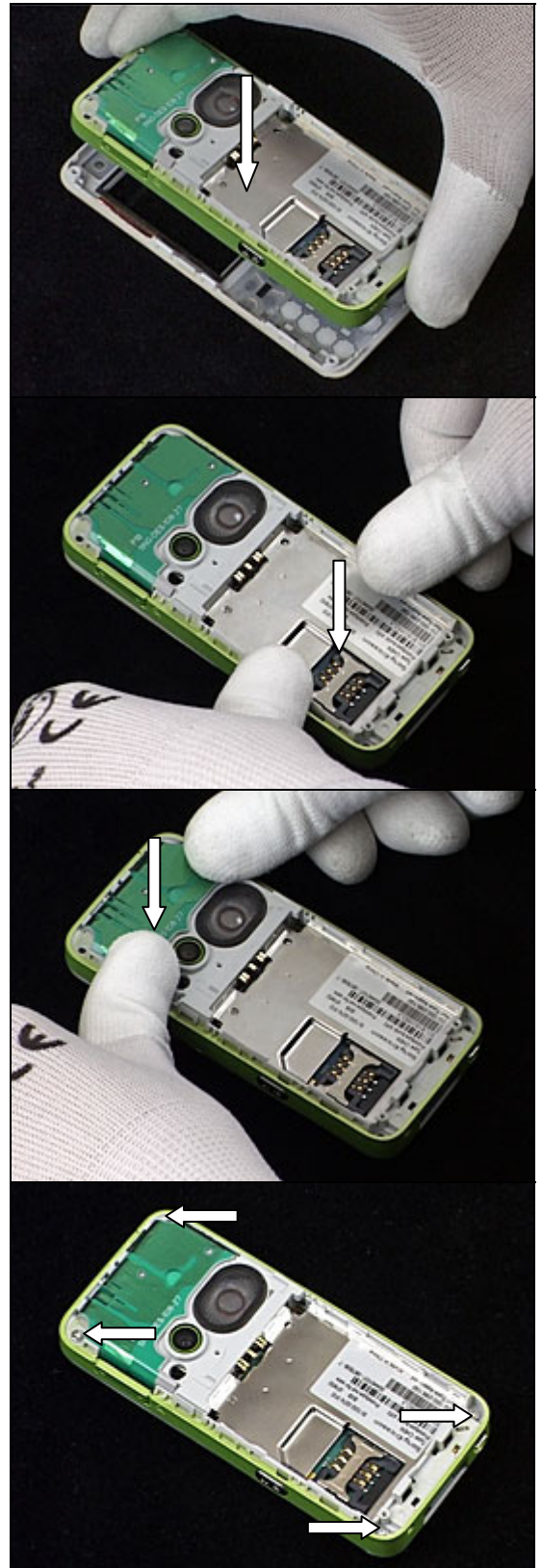
Position *Main Frame Assembly* into *Front Cover* as shown in picture.

Press down on *Main Frame Assembly* to secure into the *Front Cover* at bottom of the phone with fingers as shown in picture.

Press down on *Main Frame Assembly* to secure into the *Front Cover Assembly* at top end using fingers.

TIGHTEN THE SCREWS ACCORDING TO THE SCREWING SEQUENCE SHOWN BY THE NUMBERS IN THE PICTURE!

Use torx bit no.6 to tighten the 4 Screws *PT1.7 x 5mm*.
Use Torque pressure **20NCM +/-1NCM**.



4.1.5 Antenna Cover Assy & Back Cover Assembly

1. Place *Antenna Cover Assy & Back Cover Assembly* into top position first.
2. Lower *Antenna Cover Assy & Back Cover Assembly* into position as shown in picture.



Press down the bottom end of phone to secure snap hooks as shown in picture.

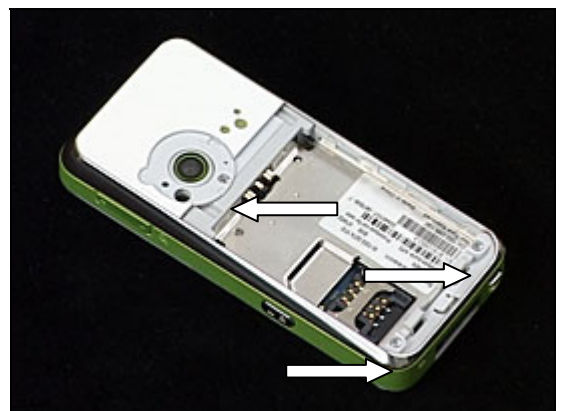


Press down the top end of phone to secure snap hooks as shown in picture.



TIGHTEN THE SCREWS ACCORDING TO THE SCREWING SEQUENCE SHOWN BY THE NUMBERS IN THE PICTURE!

Use **10Ncm +/- 2Ncm** torque pressure to tighten all 3 screws PT1.4x4mm using Philips bit.

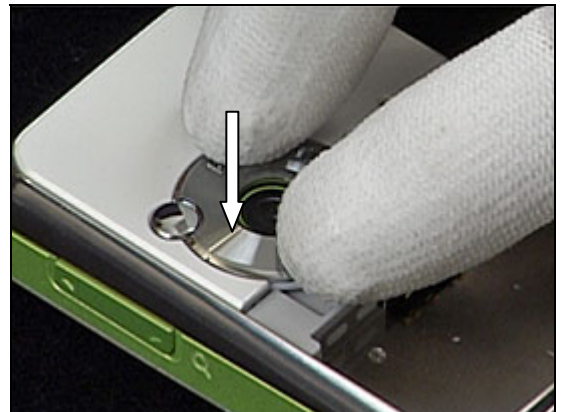


4.1.6 Camera Ring Assembly

Place *Camera Ring Assembly* into position.



Press down with fingers to secure *Camera Ring Assembly*.



4.1.7 Battery & Battery Cover

Place *Battery* into position.



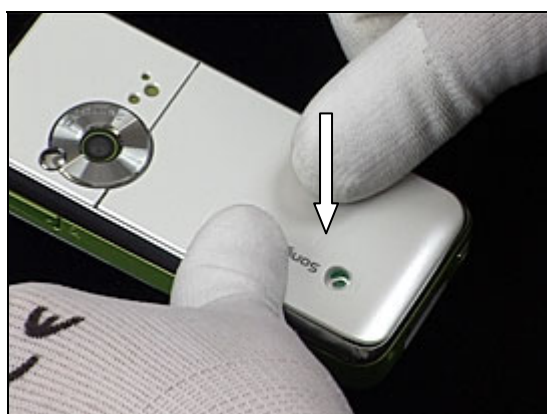
Press down with fingers to secure *Battery*.



Place *Battery Cover* into position.



Press down with fingers to secure *Battery Cover*.





5 Revision history

Rev.	Date	Changes / Comments
1	2008-02-29	First Release