



Part List Mechanical

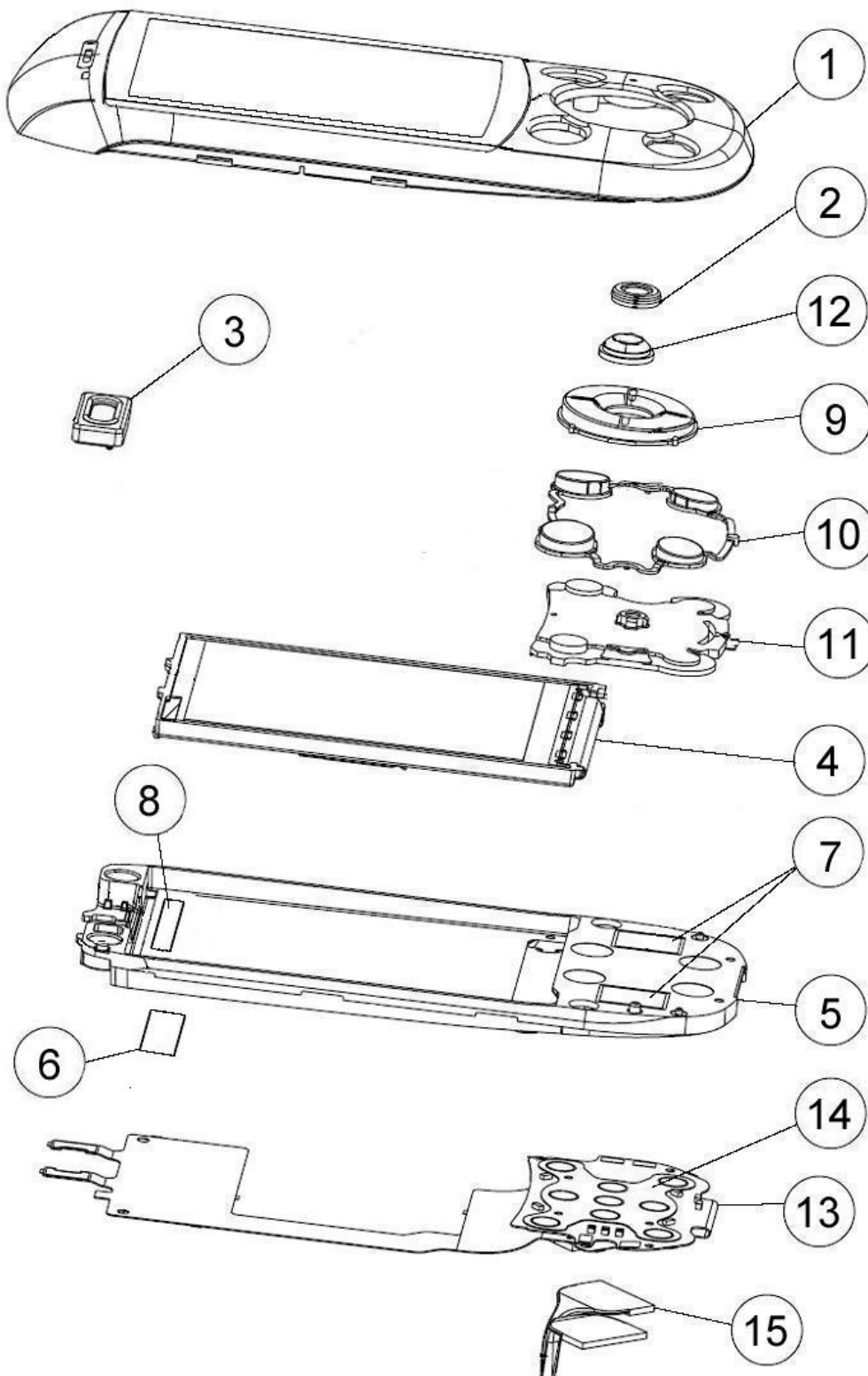
Applicable for S700i and S700c

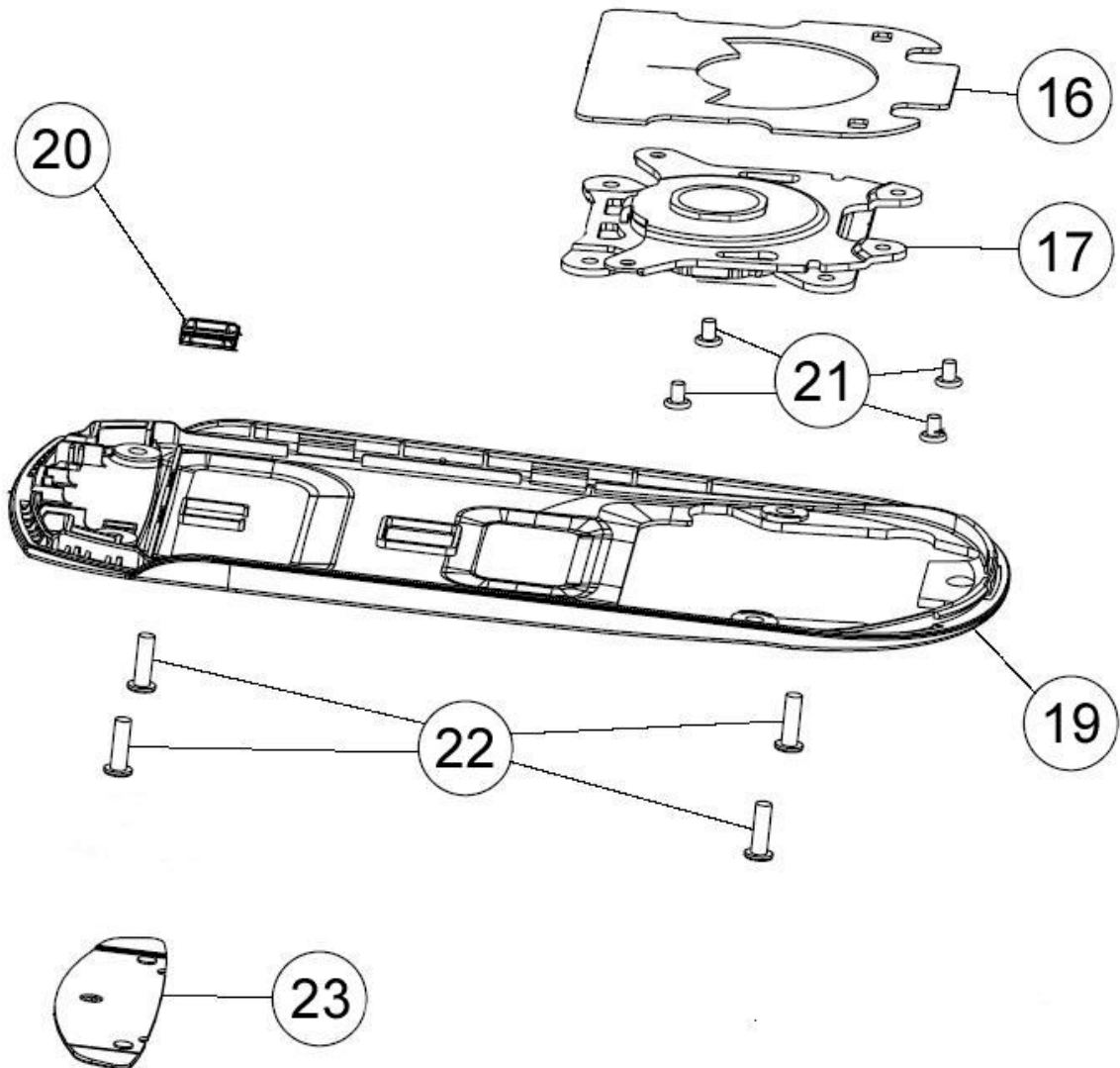
1	Exploded view	2
1.1	Exploded view upper cabinet.....	2
1.2	Exploded view lower cabinet.....	4
2	Part List	6
2.1	Part list phone	6
3	Revision History	7



1 Exploded view

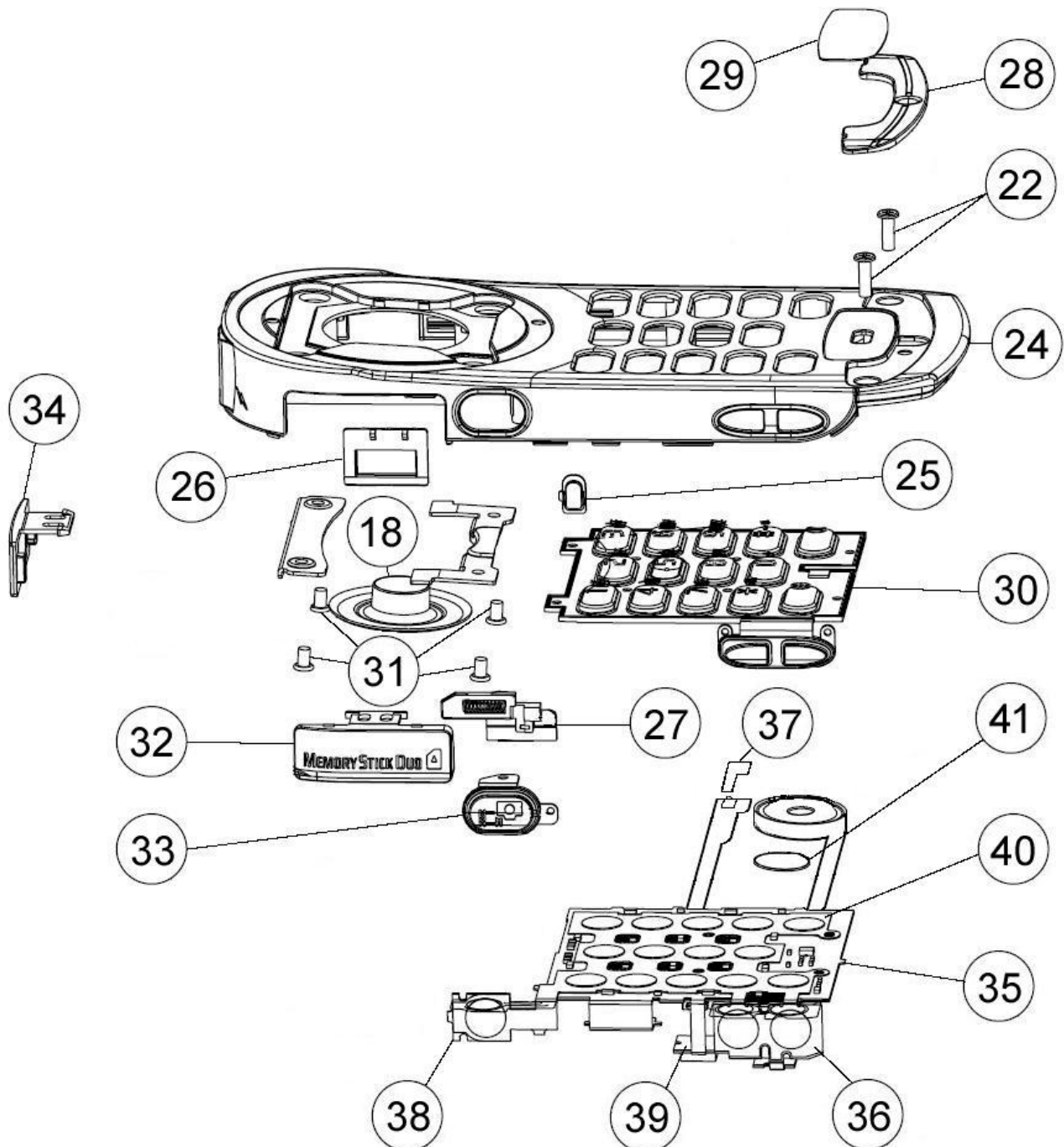
1.1 Exploded view upper cabinet

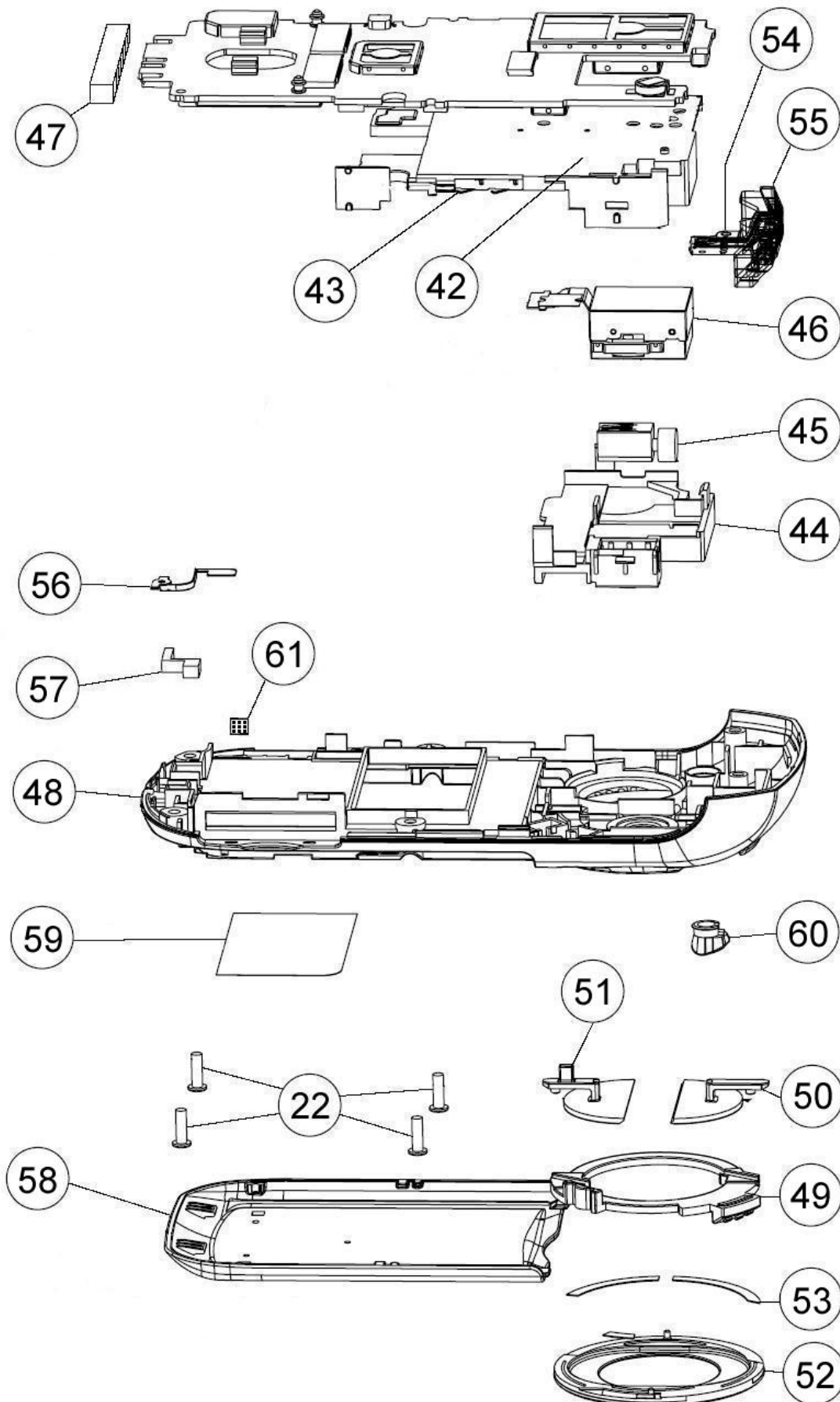






1.2 Exploded view lower cabinet







2 Part List

2.1 Part list phone

This Part List includes all parts possible to replace by using the Mechanical Repair Process. Parts available to order will be found in the Web Shop. Pos. number refers to the Exploded View.

Pos.	Description	Part Number	Comments
1	Case LCD Front Silver	A-1077-555-A	
1	Case LCD Front Silver Vodafone	A-1081-465-A	
2	Microphone	1-542-588-11	
3	Receiver	1-825-866-11	
4	LCD Unit	8-753-227-92	
5	Frame LCD	2-186-831-01	
6	Adhesive LCD Flex	2-186-849-01	On other side of frame
7	Adhesive LCD Flex2	2-186-850-01	
8	Cushion Frame LCD	2-186-854-01	
9	Button LCD Top	2-186-842-01	
10	Button LCD Side	2-186-843-01	
11	Button LCD Base	2-186-845-01	
12	Button LCD Center	2-186-844-01	
13	FPC Hinge	A-1087-431-A	
14	LCD Flex Sheet Key	1-786-746-11	
15	Harness	1-962-986-11	Delivered as Pair
16	Cushion LCD Hinge	2-186-853-01	
17	Hinge	3-263-184-11	
18	Bush Hinge	3-263-183-01	
19	Case LCD Rear	2-186-833-01	
20	Magnet	1-471-282-11	
21	Screw M14x2 (Hinge fix LCD)	3-263-180-11	Quantity = 4, green coating, Do NOT reuse
22	Screw M1 7x5,5	3-009-291-02	Quantity = 10, black
23	Panel LCD Rear	A-1077-559-A	
24	Case Key Front	2-186-875-01	
25	Light Guide (Charge LED)	2-186-885-01	
26	Panel IRDA	2-186-884-01	
27	Button Lock Switch assy	X-2023-592-01	
28	Panel LCD Front	A-1077-560-A	
29	Operator Badge	2-186-912-01	
30	Button Key Latin	2-186-880-01	
30	Button Key Bopomofo	2-186-880-11	
30	Button Key Thai	2-186-880-21	
30	Button Key Stroke/China	2-186-880-31	
30	Button Key Arabic	2-186-880-41	
30	Button Key Cyrillic	2-186-880-51	
30	Button Key Vodafone	2-318-215-01	
30	Button Key TIM	2-318-218-01	
31	Screw M17x2.5 (Hinge fix key)	3-263-235-11	Quantity = 4, red coating, Do NOT reuse
32	Cover MS	2-186-909-01	
33	Button Shutter	2-186-881-01	
34	Cover System Connector I/O	2-186-907-01	



Pos.	Description	Part Number	Comments
35	Key FPC	A-1087-432-A	
36	Adhesive, Flex UP / Down	2-186-970-01	
37	Adhesive, Flex Shutter	2-186-971-01	
38	Adhesive, Flex Camera SW	2-186-972-01	
39	Adhesive, Flex P / Light	2-186-973-01	
40	Key Flex Sheet Key (Domes)	1-786-747-11	
41	Adhesive, Speaker	2-186-919-01	
42	Frame BB	2-186-890-01	
43	Spring, A	3-037-526-01	Quantity = 2, mounted on "Frame BB"
44	Frame RF	2-186-894-01	
45	Vibrator	1-787-197-11	
46	1,3 M CCD (MCX-CC5)	8-202-605-00	
47	System Connector	1-818-596-11	
48	Case Key Rear, Silver	A-1077-557-A	
49	Frame Camera Cover	2-186-897-01	
50	Cover Camera R	2-186-895-01	
51	Cover Camera L	2-186-896-01	
52	Panel Camera	2-186-898-01	
53	Adhesive, Panel Camera	2-186-899-01	
54	Screw M1, 4x3,5	3-930-461-21	Quantity = 1, for GSM antenna
55	GSM Antenna	1-754-334-11	
56	BT Antenna	1-754-335-11	
57	Sheet Absorption A	2-186-913-01	
58	Battery Cover Assy Silver	SXK1096088	
59	Label	SVF 930 863	
60	Cover RF	2-186-908-01	
61	Water indicator label, Liquid Intrusion Indicator	SXA 109 4884	New naming, The indicator is activated by intrusion of other liquids in addition to water

3 Revision History

Rev.	Date	Changes / Comments
A	2004-09-14	First release
B	2004-09-30	Correction of part LCD Unit pos. 4, Screw M1, 4x3,5 pos 54