

Component Placing, Electrical

Applicable for T650 and T658

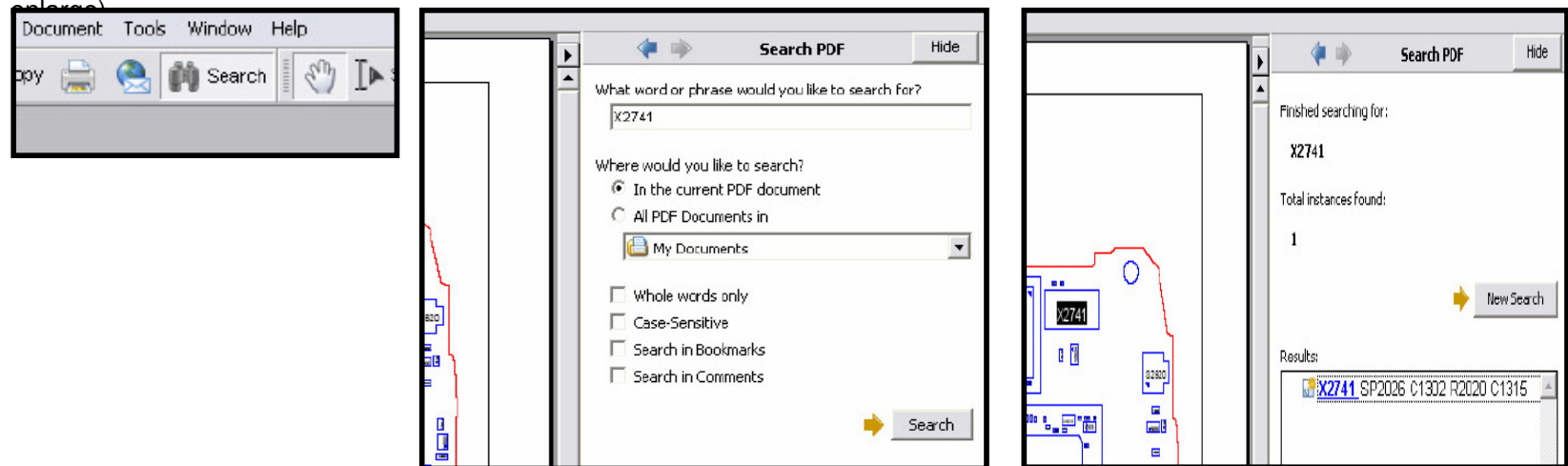
Contents

1	Mounting drawing table	2
2	Mounting drawing	3
3	Revision history	6

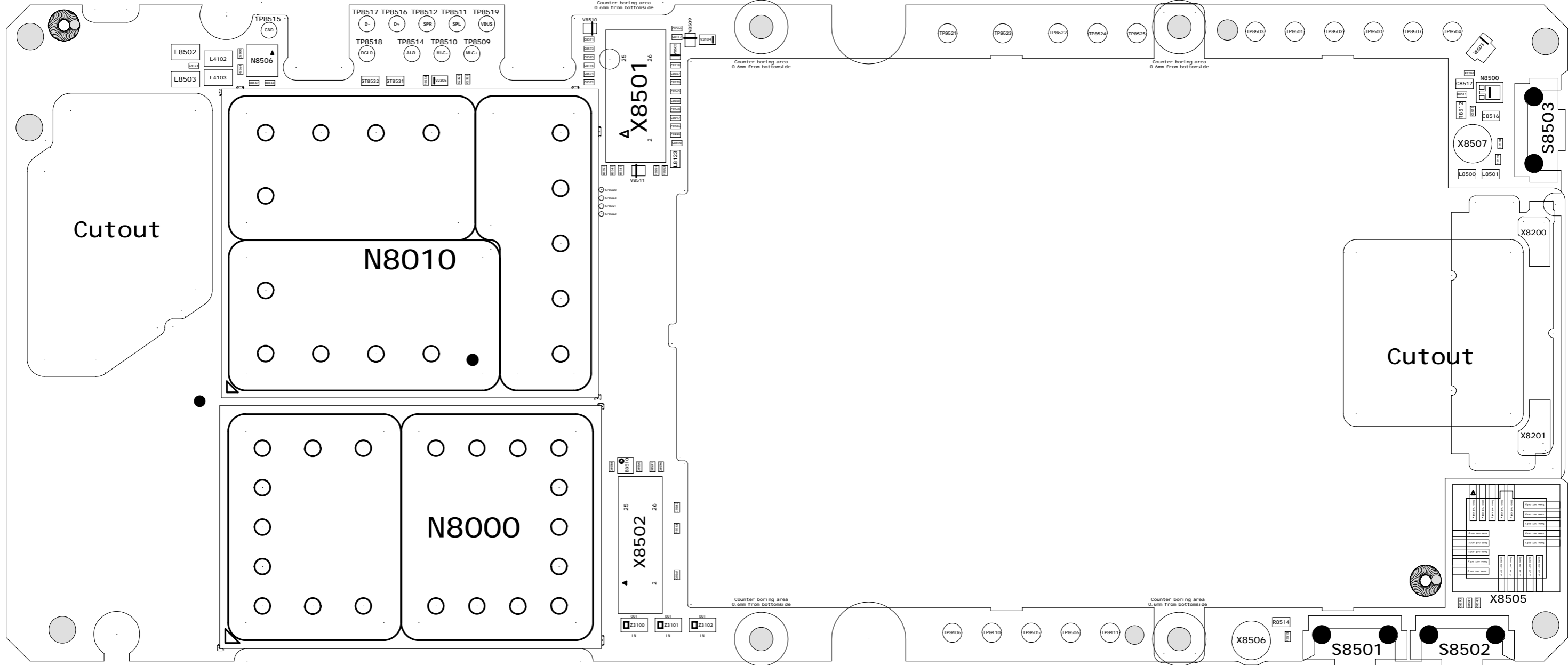
1 Mounting drawing table

Board Number	Drawing	Comments

By using the “Search” function and enter the component name you can find the position of the component (Use Adobe Reader 7.0 or a later version). Example: You can see the component name highlighted on the circuit board (use zoom to enlarge)



2 Mounting drawing 1200-8155



3 Revision history

Rev.	Date	Changes / Comments
A	2006-08-23	1 st release