



Process Flow, SP/Mechanical

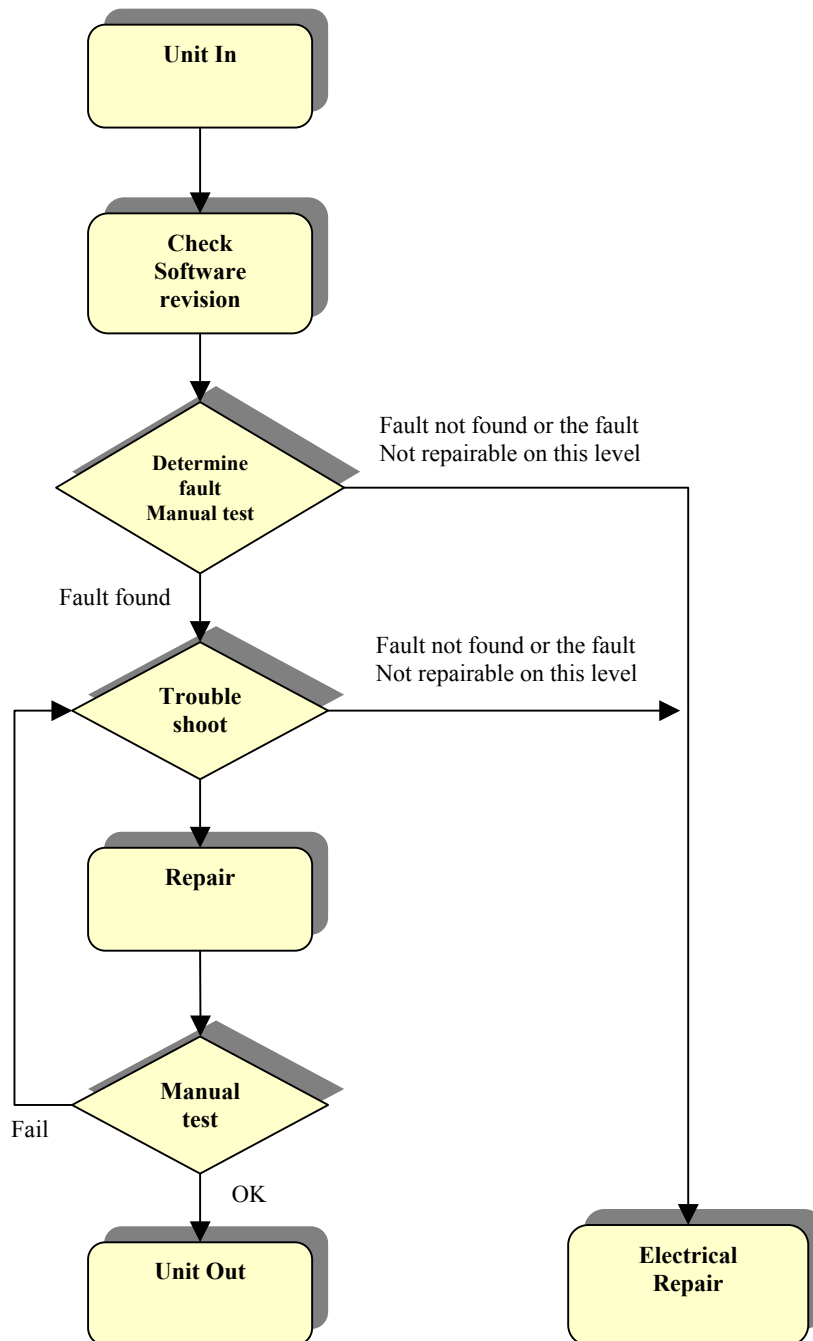
Applicable for Z600/Z608

Contents

1	Process Flow	2
1.1	Process Flow Description	3
2	Process Flow, Label	3
2.1	Process Flow Label, Description	4
3	Revision History	4



1 Process Flow

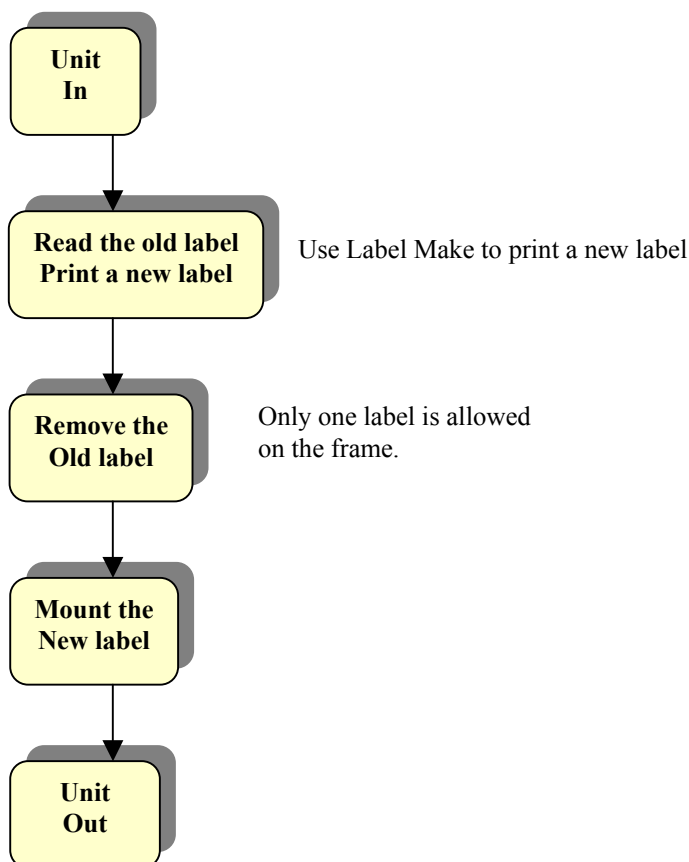




1.1 Process Flow Description

Box	Reference
Flash upgrade (Check software)	<i>Test Instruction, SP/ Mechanical</i> If necessary, update the phone with the latest software revision.
Manual test	<i>Test Instruction, SP/ Mechanical</i> To verify the phone, all test actions must be performed.
Trouble shoot	<i>Trouble Shooting Guide, SP/ Mechanical</i> Trouble-shoot the phone according to the guide for the most common faults.
Repair	<i>Working Instruction, SP/ Mechanical</i> Repair the faulty phone according to the instruction.

2 Process Flow, Label





2.1 Process Flow Label, Description

Box	Reference
Read the old label Print a new label	In the Label Make program, read the information on the old label and select system, etc. (Use the Help function in Label Make for guidance on how to use the program.) Print a new Label. Continue with Remove the old label .
Remove the old label	<i>Working Instructions.</i> Remove the old label according to the instructions. Only one label is allowed on the frame. Continue with Mount the new label .
Mount the new label	<i>Working Instructions.</i> Mount the new label according to the instructions.

3 Revision History

Rev.	Date	Changes / Comments
A	2003-09-17	First release
B	2003-09-26	Minor changes